

DOCSIS Provisioning of EPON (DPoE™)

Architecture, Specifications, Qualification

Curtis Knittle

IEEE/ITU Joint Workshop, Geneva

September 22, 2012



CableLabs®
...Revolutionizing Cable Technology®

Agenda

What is DOCSIS Provisioning of EPON?



DPoE and IEEE P1904.1 (SIEPON)



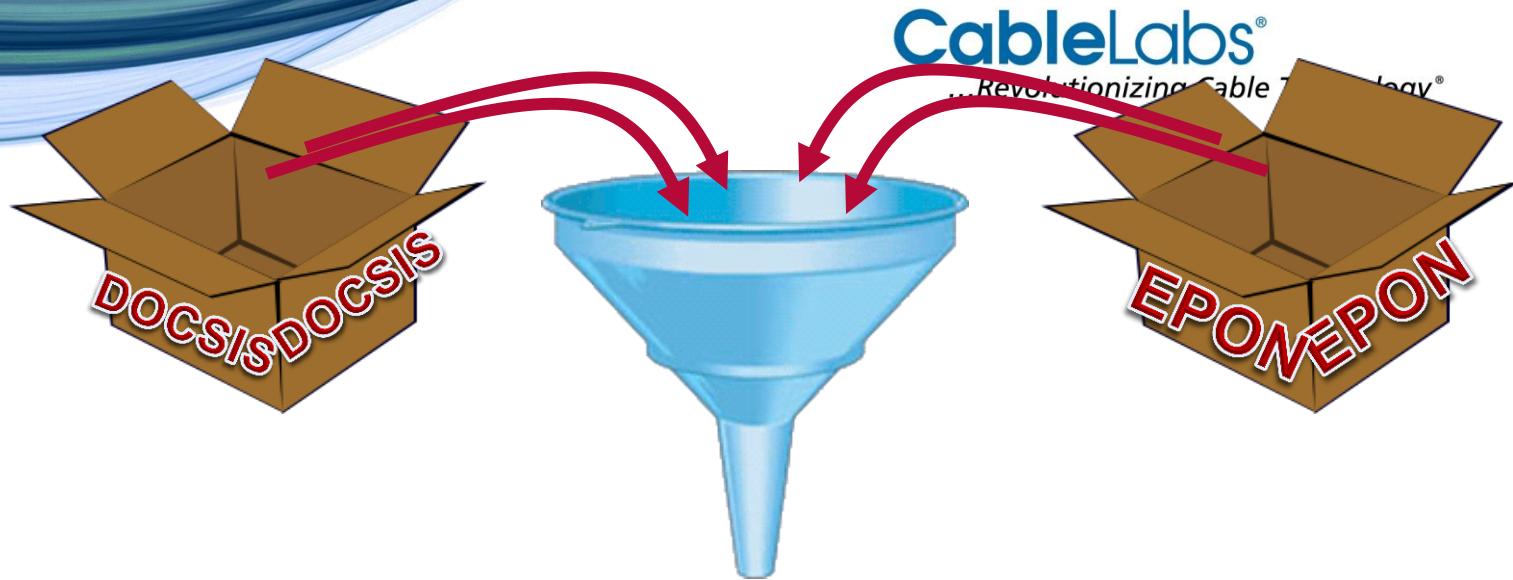
DPoE Interoperability and Qualification

DOCSIS Networks for Internet Access



- More than 118 million DOCSIS cable modems (CMs) are deployed worldwide
- Every CM, regardless of manufacturer or cable operator, is provisioned according to DOCSIS specifications
- Cable operators want to use the same Operations and Support Systems (OSS) with other access network technologies (i.e., EPON)

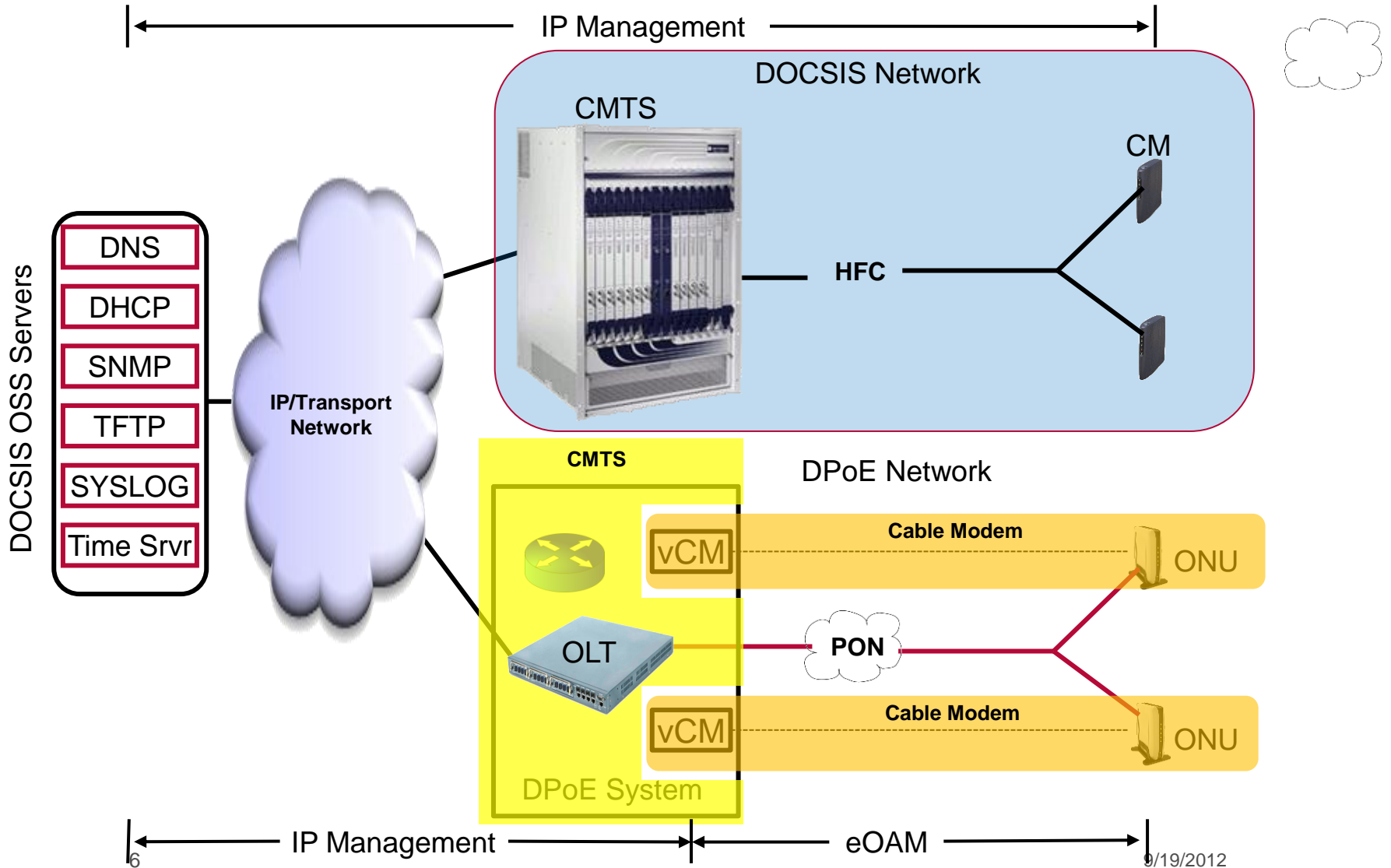
What is DOCSIS Provisioning of EPON?



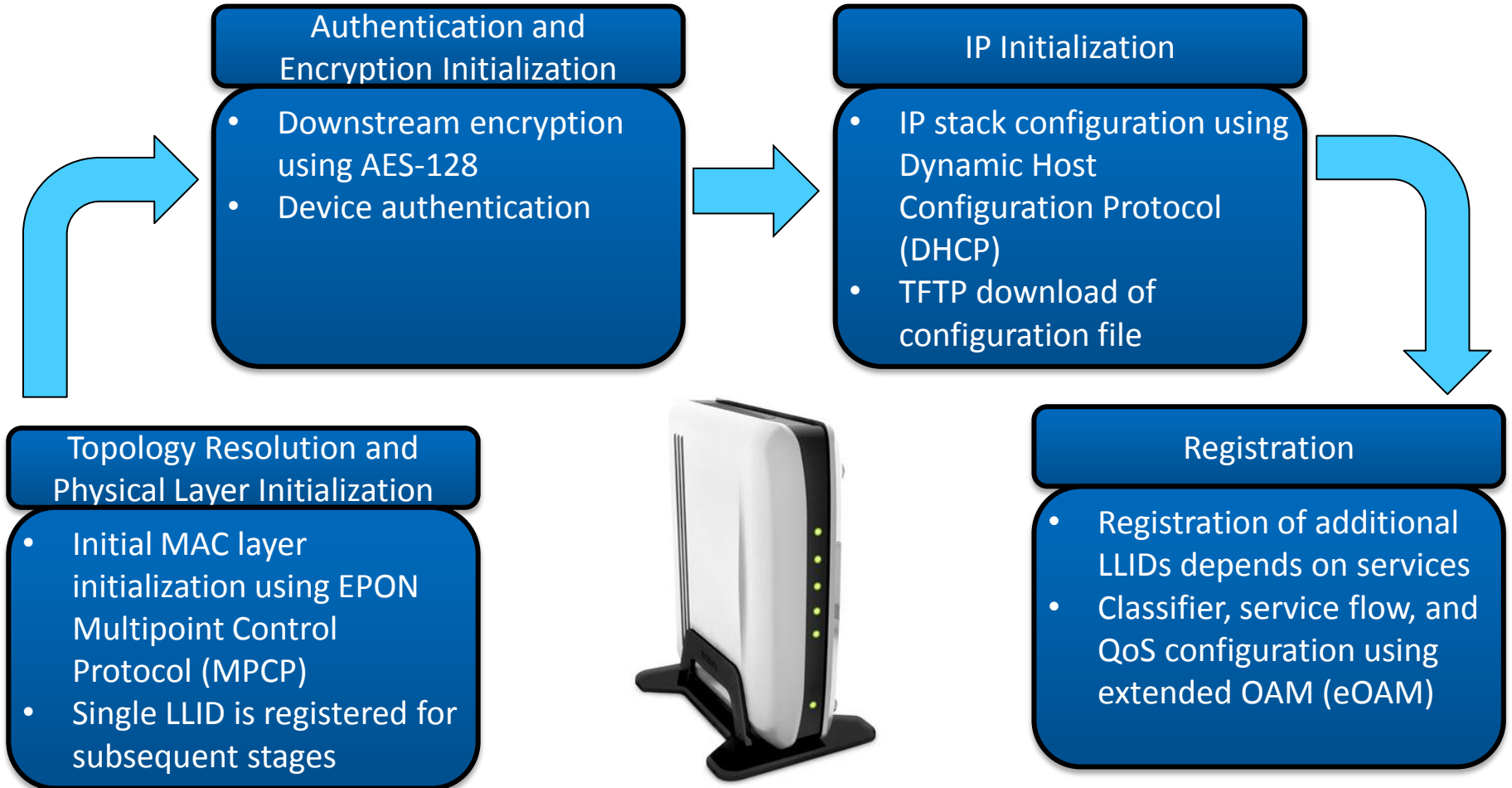
DPOE Specifications

- Brings the mature systems and business processes of the DOCSIS OSS to EPON access networks
- Enables full vendor/equipment interoperability – similar to CMTS and Cable Modems
- Leverages existing technical and customer care knowledge base, systems, and processes
- Developed by MSOs, CableLabs, and vendors

DPoE Architecture



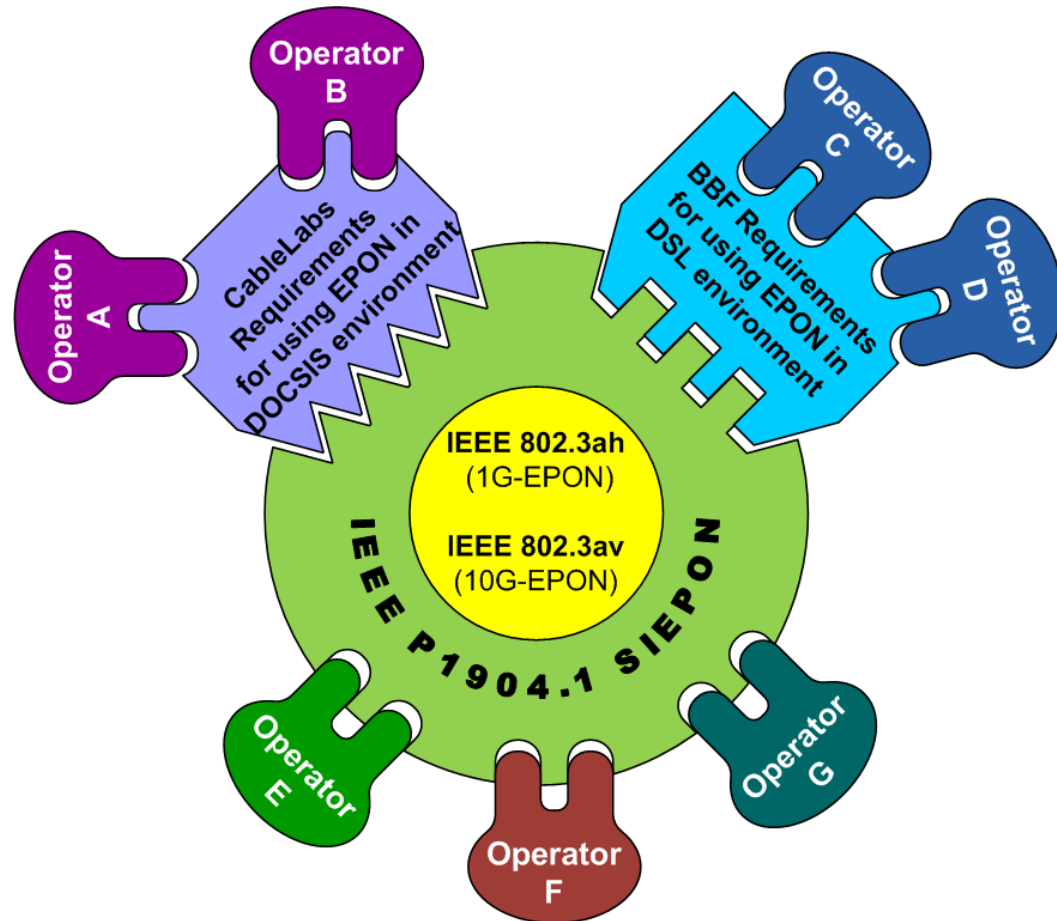
Provisioning DPoE ONUs



DPoE and IEEE P1904.1 (SIEPON)

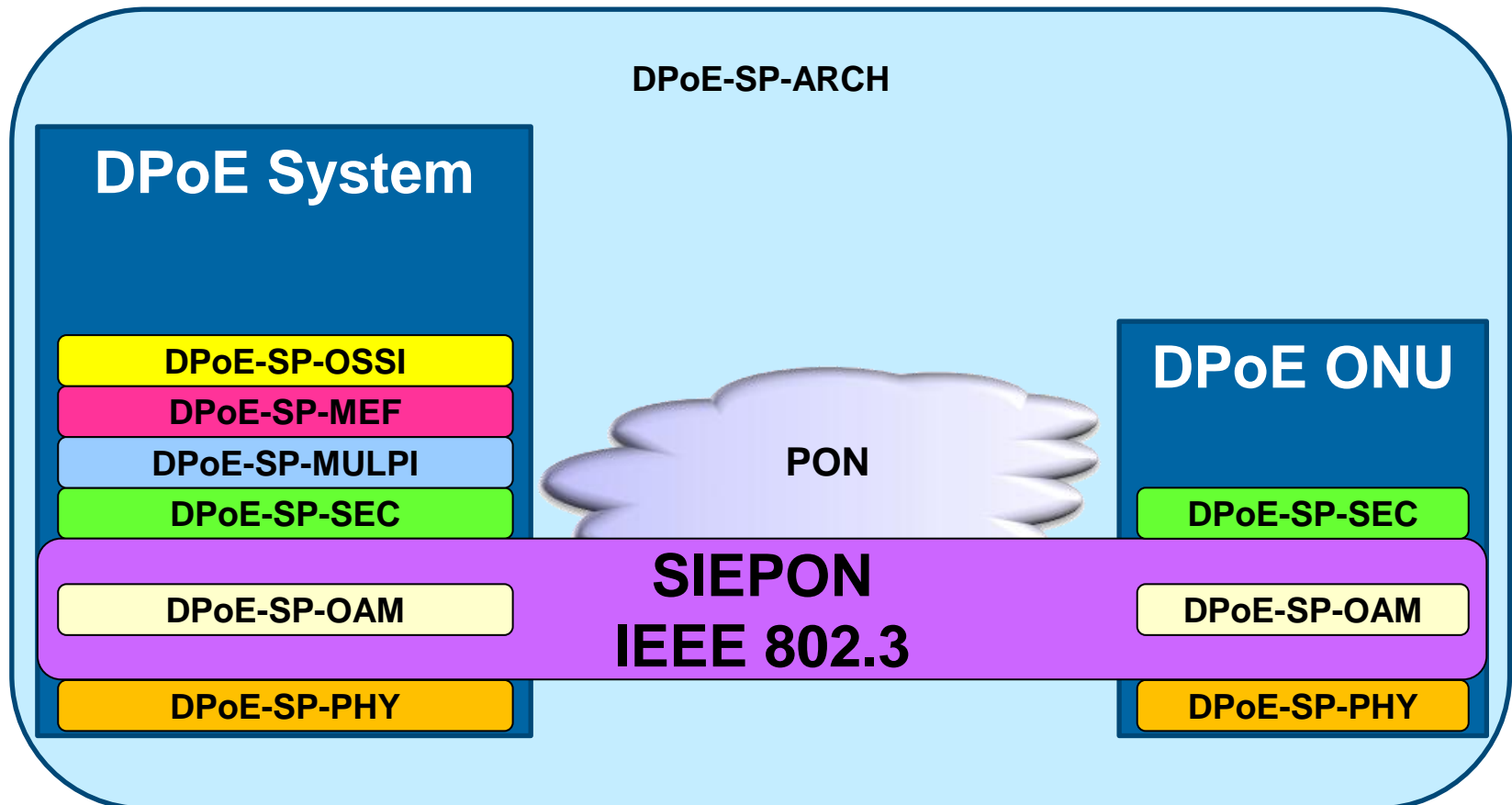
SIEPON “Packages”

- SIEPON is standardizing three “packages”:
 - North America (Package A)
 - Japan (Package B)
 - China (Package C)
- External specifications provide additional requirements for operating EPON in specific environments:
 - DPoE specs for DOCSIS environments
 - Broadband Forum for DSL environments



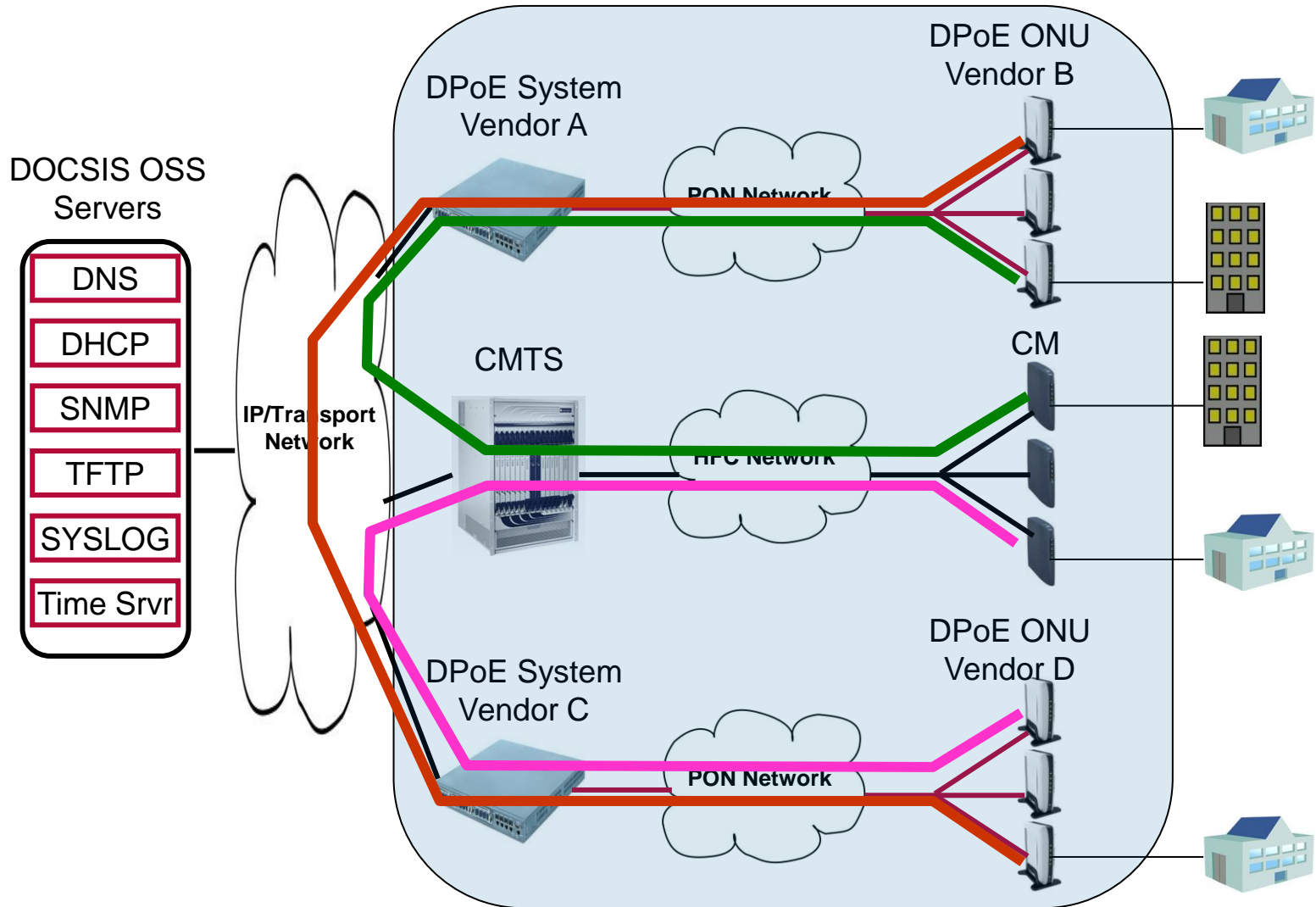
SIEPON / DPoE v1.0 Relationship

- DPoE specs essentially build on SIEPON standard

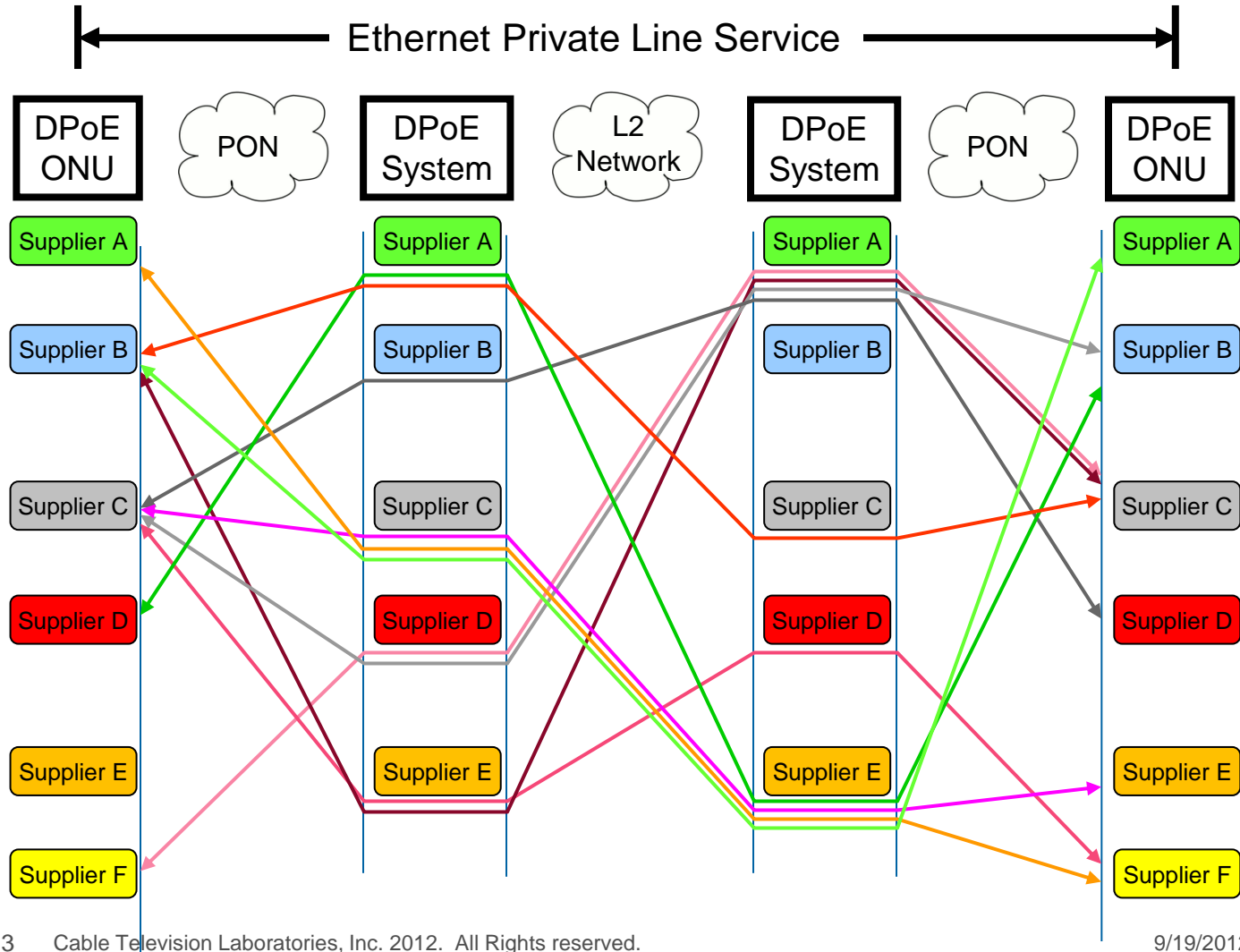


DPoE Interoperability and Qualification

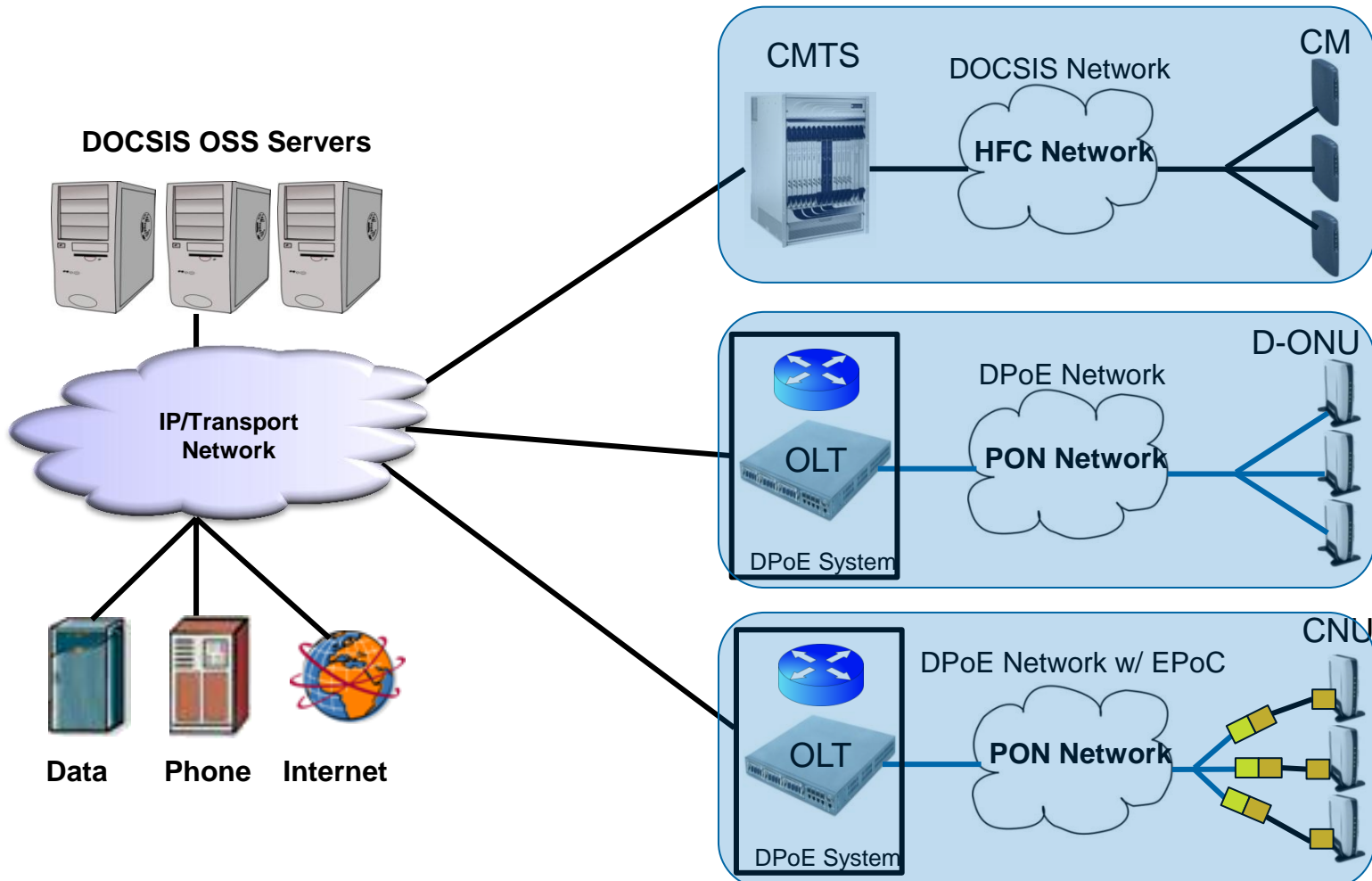
DPoE Interoperability



Service Interoperability



DPoE, EPoC and DOCSIS



DPoE + EPoC + DOCSIS = Converged Access Network Solution

Thank you!

Curtis Knittle
c.knittle@cablelabs.com

DPoE Specifications

