



ADMINISTRATIVE DUE DILIGENCE (RESOLUTION 49)

Akim FALOU DINE(BR/SSD/SPR)



Committed to connecting the world

Background

- Resolution 49: to address the problem of reservation of orbit and spectrum capacity without actual use (Res. 18 of Kyoto Plenipotentiary)
- Applies to all satellite network or satellite system of the **fixed-satellite service (FSS), mobile-satellite service (MSS) or broadcasting-satellite service (BSS)** with frequency assignments that are subject to coordination under Nos. 9.7, 9.11, 9.12, 9.12A and 9.13 and Resolution 33 (Rev.WRC-03)
- Applies to submissions under Article 4 of Appendices 30 and 30A
- Applies to submissions under Article 6 of Appendix 30B (Rev. WRC-07) with the exception of new Member States seeking the acquisition of their respective national allotments for inclusion in the AP30B Plan





Modification in WRC-2012

- This Resolution does not apply to satellite networks or satellite systems of the broadcasting satellite service in the 21.4-22 GHz band in Regions 1 and 3.
- For those satellite systems of the broadcasting satellite service in the 21.4-22 GHz band in Regions 1 and 3, the due diligence information requirements are spelt out in Resolution 552 (WRC-2012).



Committed to connecting the world

Procedure

- For all applicable satellite networks, the Administration shall send to the Bureau as early as possible before the end of the period established as a limit to bringing into use, the due diligence information relating to the identity of the satellite network and the spacecraft manufacturer specified in Annex 2 to this Resolution.
- An administration notifying these satellite networks for recording in the MIFR shall send to the Bureau, as early as possible before the date of bringing into use, the due diligence information relating to the identity of the satellite network and the launch services provider specified in Annex 2 to this Resolution.

Procedure

- Six months before expiry of the regulatory period, the BR sends a reminder if the information has not yet been received.
- Upon receipt of complete due diligence information, the BR shall publish it in a BR IFIC.
- If the complete due diligence information is not received within the specified time limit, the network shall be cancelled from the Master Register or Appendices 30/30A/30B Lists
- If a notification is received before the date of bringing into use, the assignments may be recorded provisionally in the MIFR. When the administration then confirms that they have been brought into use, BR will check whether the due diligence has been submitted.
- If a notification is received after the date of bringing into use, BR will check whether the due diligence has been submitted. If not, the notification will not be processed.

Information required

- Listed in Annex 2 to Resolution 49:
 - A. Identity of the satellite network
 - B. Spacecraft manufacturer
 - C. Launch services provider

Information required

- **A. Identity of the satellite network**
 - a) Identity of the satellite network
 - b) Name of the administration
 - c) Country symbol
 - d) Reference to the API special section, modification of AP30/30A, or information of Article 6 of AP30B(Rev.WRC-07)
 - e) reference to the CR/C special section (not applicable for AP30/30A/30B)

Information required

- **A. Identity of the satellite network (cont'd)**
 - f)* Frequency band(s)
 - g)* Name of the operator
 - h)* Name of the satellite
 - l)* Orbital characteristics

Information required

B. Spacecraft manufacturer

- a) Name of the spacecraft manufacturer
- b) Date of execution of the contract
- c) Contractual “delivery window”
- d) Number of satellites procured

Information required

C. Launch services provider

- a) Name of the launch vehicle provider
- b) Date of execution of the contract
- c) Anticipated launch or in-orbit delivery window
- d) Name of the launch vehicle
- e) Name and location of the launch facility



BR Software Tools for Res 49

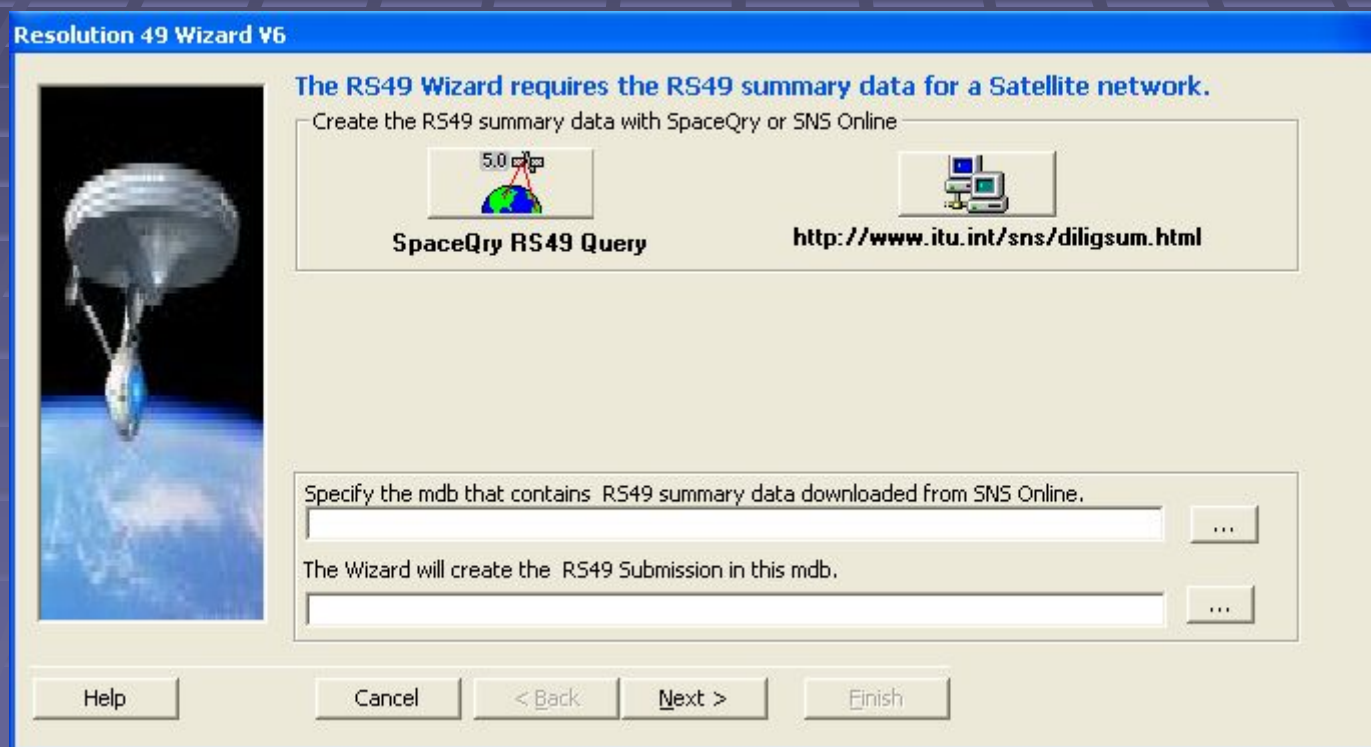
- BR has made available software tools: Res 49 wizard, to facilitate the capture of the required due diligence information
- Information shall be captured using SPACECAP, but making use of either Spacequery or SNSonline to first create a RS49 summary data
- Spacecap/Spacequery is available from
 - BR IFIC (Space services) DVD-ROM
 - Download from the BR web site
<http://www.itu.int/ITU-R/software/space/index.html>



Committed to connecting the world

BR Software Tools for Res 49

- RS49 Wizard





BR Software Tools for Res 49

BR Space Query and Extract System

File View Window Help

Resolution-49 Capture Query

RS49 Search Criteria

Adm Code: Network ID: Orbital Position Range:

Sat Type: Notif Reason: 2C-Date Range:

No previous RS49 submission:

RS49 Search Results (total count: 1)

Satellite Name	Orbital Position	Ntc Type	Notice ID	Ntf Rsn	Adm	Org	IFIC / WIC no	Date Wic	+/-	BR Status
B-SAT-1W	-48.00	G	106520232	C	B		2609	11.12.2007	A	50

RS49 Frequency Range Info for Network: 106520232

Date In Use	Minimum of Band (in MHz)	Maximum of Band (in MHz)	Date Protected	IFIC / WIC no	Date Wic
15.09.2009	1545.00000	1555.00000	01.12.2006	2609	11.12.2007
15.09.2009	1646.50000	1656.50000	01.12.2006	2609	11.12.2007
15.09.2009	3640.40000	3642.60000	01.12.2006	2591	03.04.2007
15.09.2009	3625.00000	3658.00000	01.12.2006	2591	03.04.2007
15.09.2009	3662.00000	4178.00000	01.12.2006	2591	03.04.2007
15.09.2009	4185.00000	4195.00000	01.12.2006	2591	03.04.2007


Base RS49 Capture data on group min/max values



BR Software Tools for Res 49

Resolution 49 Wizard V6 - SpaceCraft Manufacturer

Enter the Spacecraft Manufacturer information for this network.



BR41 Commercial Name of the Satellite:

Spacecraft Manufacturer

BR30 Name of the Spacecraft Manufacturer

BR31 Date of Execution of the Contract

BR32 Contractual "Delivery Window" From To BR33 Number of Satellites Procured

Note: You can use SpaceCap to add or modify the Manufacturer Information later.

Help Cancel < Back **Next >** Finish

BR Software Tools for Res 49

Resolution 49 Wizard V6 - Launch Services Provider

Enter the Launch Services Provider for this Network.

Launch Services Provider

BR34 Name of the Launch Vehicle Provider

BR35 Name of the Launch Vehicle

BR36 Date of Execution of the Contract

BR37 Anticipated Launch or In-Orbit "Delivery Window"
From To

BR38 Name of the Launch Facility

BR39 Country/Location

BR40 Geographical Coordinates

Longitude				Latitude			
Degrees	E/W	Min	Sec	Degrees	N/S	Min	Sec
<input type="text"/>	<input type="text"/>	<input type="text"/>	<input type="text"/>	<input type="text"/>	<input type="text"/>	<input type="text"/>	<input type="text"/>

Note: You can use SpaceCap to add or modify the Service Provider Information later.

Help Cancel < Back Next > Finish

BR Software Tools for Res 49

Resolution 49 Wizard V6 - Frequency Ranges Subject to Resolution 49

<input type="checkbox"/>	Frequency Range - R549 not Submitted	Date Inuse	Date Protection
<input type="checkbox"/>	10953.00000 to 11007.00000	15.09.2009	
<input type="checkbox"/>	10983.00000 to 11037.00000		
<input type="checkbox"/>	11013.00000 to 11067.00000		
<input type="checkbox"/>	11043.00000 to 11097.00000		
<input type="checkbox"/>	11073.00000 to 11127.00000		
<input type="checkbox"/>	11103.00000 to 11157.00000		
<input type="checkbox"/>	11133.00000 to 11187.00000		
<input type="checkbox"/>	11462.00000 to 11498.00000		
<input type="checkbox"/>	11482.00000 to 11518.00000		
<input type="checkbox"/>	11502.00000 to 11538.00000		
<input type="checkbox"/>	11522.00000 to 11558.00000		
<input type="checkbox"/>	11542.00000 to 11578.00000		
<input type="checkbox"/>	11562.00000 to 11598.00000		
<input type="checkbox"/>	11582.00000 to 11618.00000		
<input type="checkbox"/>	11602.00000 to 11638.00000		
<input type="checkbox"/>	11622.00000 to 11658.00000		
<input type="checkbox"/>	11642.00000 to 11678.00000		

Select all Frequency Ranges for which you wish to submit Administrative Due Diligence (Resolution 49).

Note: In case of frequency bands used by a Space Operation Service. If the Space Operation uses its own frequency allocation, Due Diligence is not required.

Warning! The frequency ranges subject to Res49 which are not submitted for Res49 will be deleted from the corresponding notice when the Date of Bringing into Use has passed.

Clear Selection Select All

Help Cancel < Back Next > Finish

Res 49 Special Section



UNION INTERNATIONALE DES TÉLÉCOMMUNICATIONS
BUREAU DES RADIOCOMMUNICATIONS

INTERNATIONAL TELECOMMUNICATION UNION
RADIOCOMMUNICATION BUREAU

UNIÓN INTERNACIONAL DE TELECOMUNICACIONES
OFICINA DE RADIOCOMUNICACIONES

© I.T.U.

RÉSEAU À SATELLITE SATELLITE NETWORK RED DE SATÉLITE		B-SAT-1R		SECTION SPÉCIALE N° SPECIAL SECTION No. SECCIÓN ESPECIAL N.º	RES49/1491
ADM. RESPONSABLE RESPONSIBLE ADM. ADM. RESPONSABLE	B	LONGITUDE NOMINALE NOMINAL LONGITUDE LONGITUD NOMINAL	65 W	BR IFIC / DATE BR IFIC / DATE BR IFIC / FECHA	2698 / 12.07.2011
NUMÉRO D'IDENTIFICATION LIÉ LINKED IDENTIFICATION NUMBER NÚMERO DE IDENTIFICACIÓN ASOCIADO			105520001	NUMÉRO D'IDENTIFICATION IDENTIFICATION NUMBER NÚMERO DE IDENTIFICACIÓN	
RENSEIGNEMENTS REÇUS PAR LE BUREAU LE / INFORMATION RECEIVED BY THE BUREAU ON / INFORMACIÓN RECIBIDA POR LA OFICINA EL					13.06.2011

	Les renseignements ont été reçus conformément aux § 4, 5 ou 6 de l'annexe 1 à la Résolution 49. Ils sont publiés par le Bureau des radiocommunications en application du § 8 de cette même annexe.	This information has been received pursuant to § 4, 5 or 6 of Annex 1 to Resolution 49. It is published by the Radiocommunication Bureau in accordance with § 8 of that Annex.	La información ha sido recibida de conformidad con los § 4, 5 ó 6 del Anexo 1 a la Resolución 49. Se publica por la Oficina de Radiocomunicaciones en virtud del § 8 de este anexo.
	Ces renseignements sur le réseau à satellite sont soumis dans le cadre de	This information is submitted on the satellite network within the scope of	Las informaciones en la red de satélite están sometidas en el cuadro del
X	§ 1	Annexe 1 to Resolution 49	Anexo 1 a la Resolución 49
	§ 2		
	§ 3		

Informations détaillées aussi disponibles sur:

- les bases de données SRS ou SPS que l'on peut consulter à l'aide du logiciel SpaceQry
- ou
- Space Network Systems Online Service: <http://www.itu.int/sns/>

Detailed information also available on the:

- SRS or SPS databases which can be viewed using SpaceQry software
- or
- Space Network Systems Online Service: <http://www.itu.int/sns/>

Información detallada también disponible en:

- las bases de datos SRS o SPS que pueden consultarse utilizando el programa SpaceQry
- o
- Space Network Systems Online Service: <http://www.itu.int/sns/>

Res 49 Special Section

SECTION SPECIALE / SPECIAL SECTION / SECCIÓN ESPECIAL / 特节 / СПЕЦИАЛЬНАЯ СЕКЦИЯ / القسم الخاص						RES49/1491
A	A1a Sat. Network	B-SAT-1R	A1f1 Notifying adm.	B	A1f3 Inter. sat. org.	BR1 Date of receipt
BR0a/BR0b	Id. no.	111590037	BR0c	Linked Id. no.	105520001	BR3a Provision reference
						RS49
						BR2 Adm. serial no.

A4a1 Orbital long. 65 W

BR41 Commercial name	B-SAT-1R				
BR30 Spacecraft manufacturer	ALCATEL				
BR31 Date of execution of the contract	21.05.2003	BR32 Contractual delivery window From:	01.11.2007	To:	30.11.2007
				BR33 Number of satellites procured	1
BR34 Launch vehicle provider	ARIANESPACE		BR35 Launch vehicle	ARIANE 5	
BR36 Date of execution of the contract	21.05.2003	BR37 Anticipated launch or delivery window From:	01.09.2007	To:	01.12.2007
BR38 Launch facility	KOUROU	BR39 Country / location	GUF	BR40 Geographical coordinates	052W43 48 05N12 00

C1 Frequency Range			BR1	
C7a Lower limit		C7b Upper limit		Date of receipt
3620	MHz	4198	MHz	13.06.2011
3625	MHz	3658	MHz	13.06.2011
3662	MHz	3698	MHz	13.06.2011
3702	MHz	3738	MHz	13.06.2011
3703.5	MHz	3736.5	MHz	13.06.2011
3742	MHz	3778	MHz	13.06.2011
3743.5	MHz	3776.5	MHz	13.06.2011
3782	MHz	3818	MHz	13.06.2011
3783.5	MHz	3816.5	MHz	13.06.2011
3822	MHz	3858	MHz	13.06.2011
3823.5	MHz	3856.5	MHz	13.06.2011
3862	MHz	3898	MHz	13.06.2011
3863.5	MHz	3896.5	MHz	13.06.2011
3902	MHz	3938	MHz	13.06.2011
3903.5	MHz	3936.5	MHz	13.06.2011
3942	MHz	3978	MHz	13.06.2011
3943.5	MHz	3976.5	MHz	13.06.2011
3982	MHz	4018	MHz	13.06.2011
3983.5	MHz	4016.5	MHz	13.06.2011
4022	MHz	4058	MHz	13.06.2011
4023.5	MHz	4056.5	MHz	13.06.2011
4062	MHz	4098	MHz	13.06.2011
4063.5	MHz	4096.5	MHz	13.06.2011
4102	MHz	4138	MHz	13.06.2011
4103.5	MHz	4136.5	MHz	13.06.2011
4142	MHz	4178	MHz	13.06.2011
4143.5	MHz	4176.5	MHz	13.06.2011
4198.45	MHz	4198.55	MHz	13.06.2011
4198.95	MHz	4199.05	MHz	13.06.2011
4199.45	MHz	4199.55	MHz	13.06.2011
4199.75	MHz	4199.85	MHz	13.06.2011
5850	MHz	5883	MHz	13.06.2011
5850	MHz	6423	MHz	13.06.2011
5887	MHz	5923	MHz	13.06.2011
5925.2	MHz	5925.8	MHz	13.06.2011
5927	MHz	5963	MHz	13.06.2011
5967	MHz	6003	MHz	13.06.2011



Questions?

akim.faloudine@itu.int
BR/SSD/SPR



Committed to connecting the world