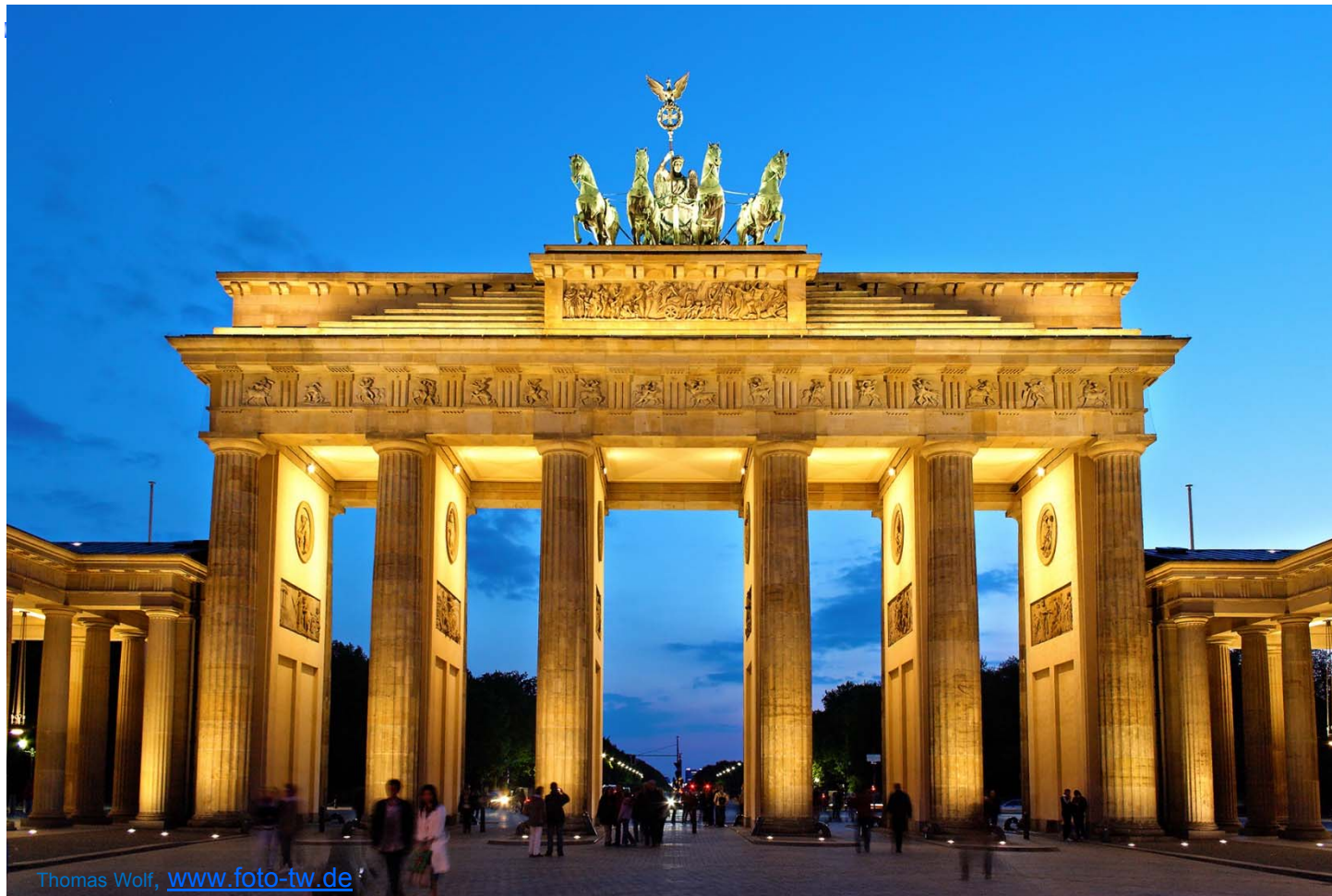


# WELCOME at the Gate to a New World



Thomas Wolf, [www.foto-tw.de](http://www.foto-tw.de)

NAVINFO >

NDS  
Association:  
**Automotive  
Grade  
Map  
Technology  
for  
Automated  
Driving**

Beijing, 28.07.2015

Dr. Volker Sasse - Dr. GuoWenhui



# The Progress of NDS



1992 CAR Navi touched the Markets 2002 Navigation every where 2012 NDS touched the markets



Navigation Data Standard  
PSF Physical Data Format

36° 10' 29" N - 115° 08' 13" W

What is the easiest way to get there?  
Reach your business goals with standardised map format solutions

▲  
NDS 2015

NDS  
Association:  
**Automotive  
Grade  
Map  
Technology  
for  
Automated  
Driving**

Telematics & Autonomous Driving Workshop Beijing, 28.07.2015





# Automotive Grade Map Technology for Auto Drive

Our Goal is to get from **A** to **B**

1. Carriage, car, containers transport us on road, rail, water, air
2. Autonomously, by auto pilot, automatically asap
3. Information integrators inject intelligence supporting the goal
4. Modelling the world is the ultimate foundation of the system





## NDS is part of a Big Change of Our World

1. Our primary focus is technically, but has influence beyond this
2. The diversity of members is a platform for extended discussion
3. We are discussing cooperations e.g. with VDA, Ertico, Genivi,...
4. Continuous growing of the consortium



Smart support on the way.

## Highlevel Feature Set





### NDS achievements in the last Year (1 of 4)

- **Speedup work towards cloud integration and autonomous driving, strengthened special Working Groups**
- **Worked on a new certification bench approach for the MAP**
- **Introduced 'Fast Track Extensions' speeding up development processes**
- **Released new NDS Version with new features and optimizations**
- **Improved interoperability and backwards compatibility**

This route comes highly recommend.

## Success stories from 2014

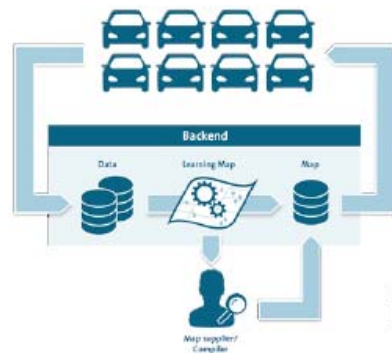




## Automotive Grade Map Technology for Auto Drive

### NDS achievements..., legal context (2 of 4)

- **Cross License Agreement among members**
- **Self-commitment rules regarding fairness w.r.t. 3<sup>rd</sup> parties**
- **Special SQLite usage contract**
- **Evaluation contract for 3<sup>rd</sup> parties like start-ups for Auto Drive**



It's full speed down the open road.

# The fast lane forward

Big Loop:  
Learning map for Autonomous Driving

6

## Automotive Grade Map Technology for Auto Drive

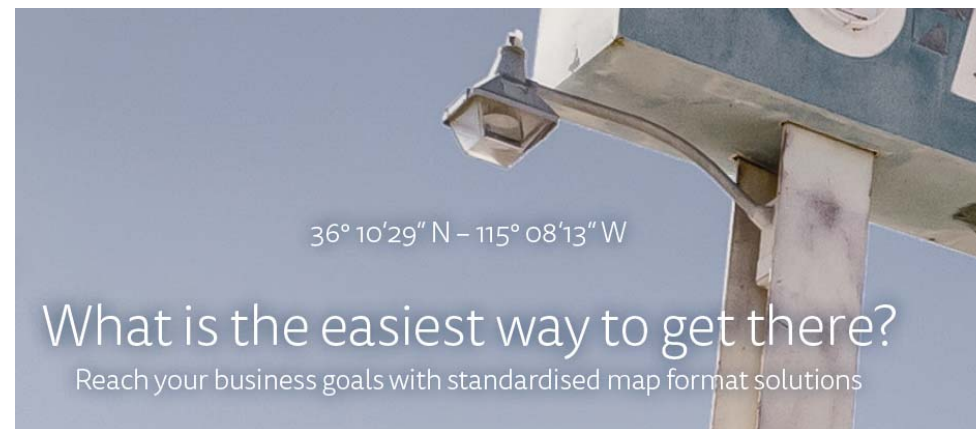


It's full speed down the open road.

# The fast lane forward

### NDS achievements..., event context (3 of 4)

- Organized NDS Roadshow in Korea and USA, also Public Days
- Invitation to all companies in the relevant car industry
- Presentation in 1<sup>st</sup> CES Shanghai – Conferences in Baden-Baden and ITS Bordeaux
- Organized NDS Working/User Groups (WG>NDS UG) for Japan and USA



7



## NDS achievements..., advertisement context (4 of 4)

- See new teaser video explaining NDS on web site
- We provide NDS advertisement flyer with success stories
- See NDS Wikipedia articles in different languages (English & Chinese & German & Japanese online)
- Extension of the NDS association web site with NDS products and tools

More than a PSF

**Navigation Data Standard**  
PSF Physical Storage Format

Dr. Volker Sasse  
Chairman

Navigation Data Standard (NDS) e.V.

DR.SASSE@navinfo.com      Mobile      +49 176 10219090  
www.nds-association.org      +86 186 11233155





# Automotive Grade Map Technology for Auto Drive



## NDS Members

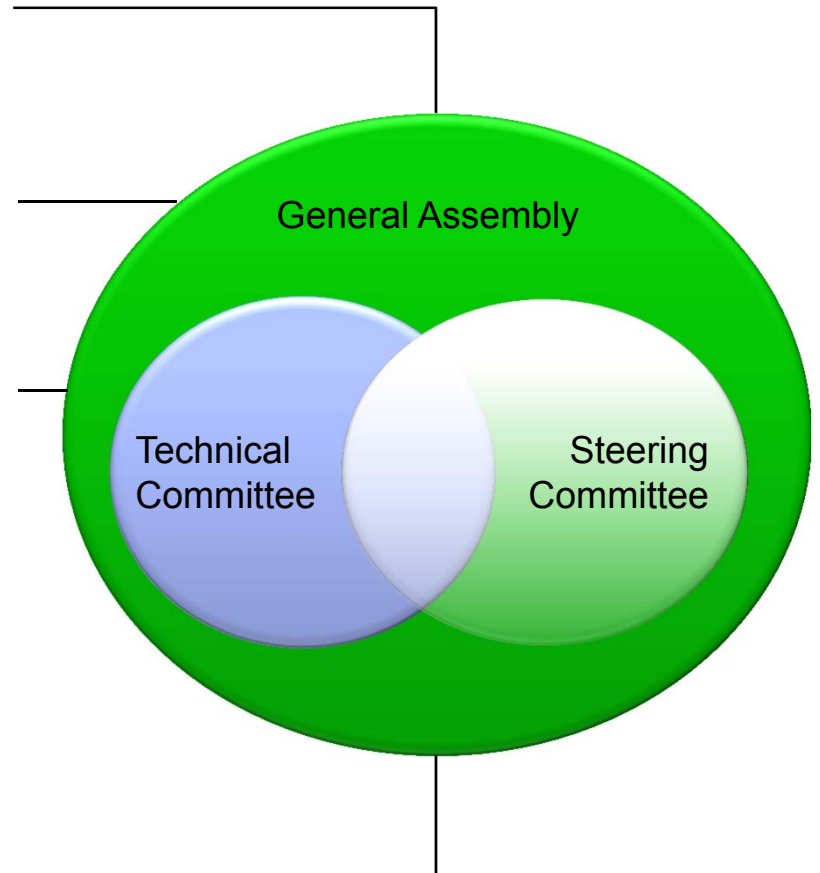
Map Data Providers

Compiler Developers

System Providers

Service Providers

Car Manufacturers



# Automotive Grade Map Technology for Auto Drive



Photos by Volkswagen



Photos by BMW



Photos by Daimler

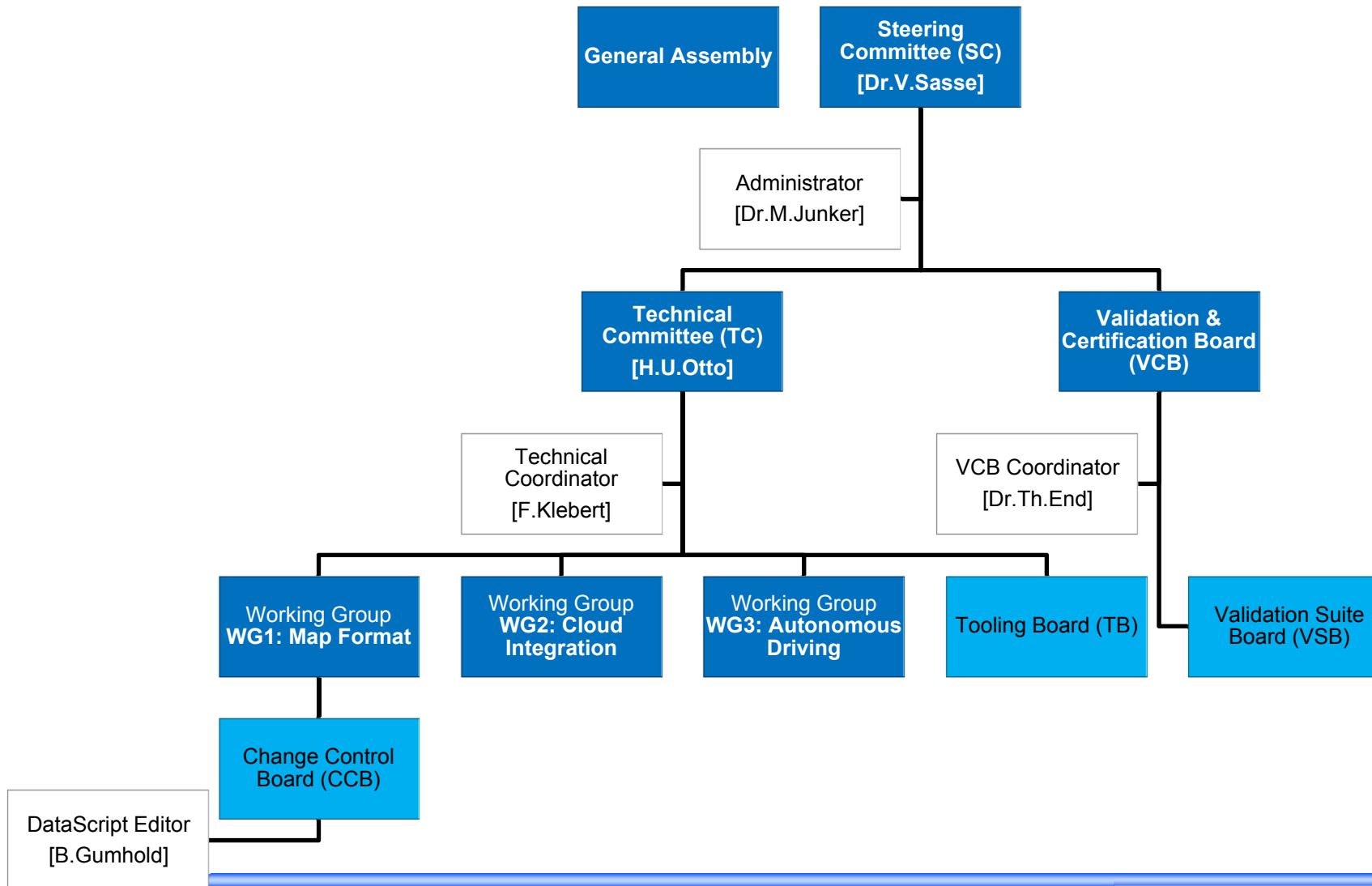
2013

2014

2015



# Automotive Grade Map Technology for Auto Drive



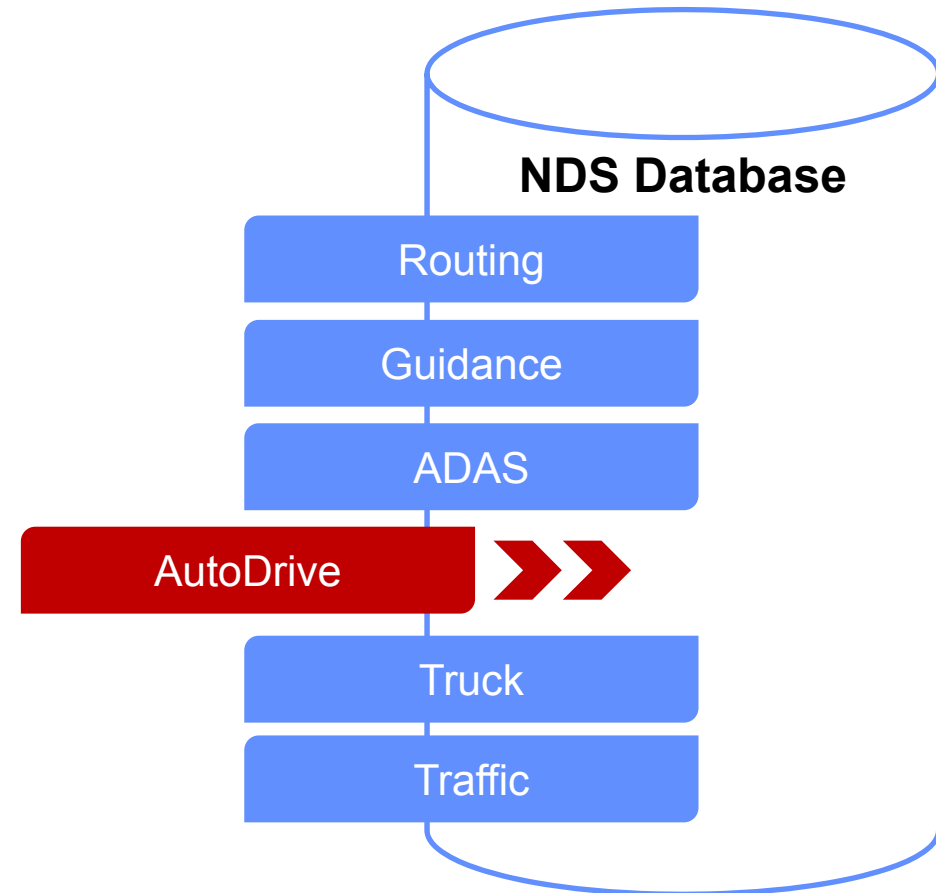
## Working Group 3: Auto Drive

- **Definition**
  - WG3 is responsible for the development of all map features which are needed to support autonomous driving use cases.
- **Goals**
  - Define and update map requirements for autonomous driving
  - Develop proposals and change requests for NDS map format
- **Tasks**
  - Provide high quality requirements and use cases to support autonomous driving
  - Provide high quality documentation for all autonomous driving-related parts of NDS
  - Drive integration of innovations from the autonomous driving domain
  - Align with WG1 to make NDS format „autonomous driving capable“

## NDS – AutoDrive features

- **Seamless integration with NDS standard Infotainment map**

- **AutoDrive layer** integrates in same way as other layers (e.g. guidance, ADAS, truck)
- **High re-use** of Database Access code for standard applications
- Already **existing attributes** can be assigned to HD lane model

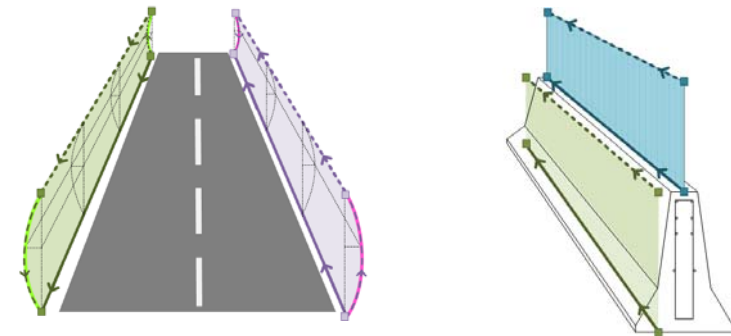
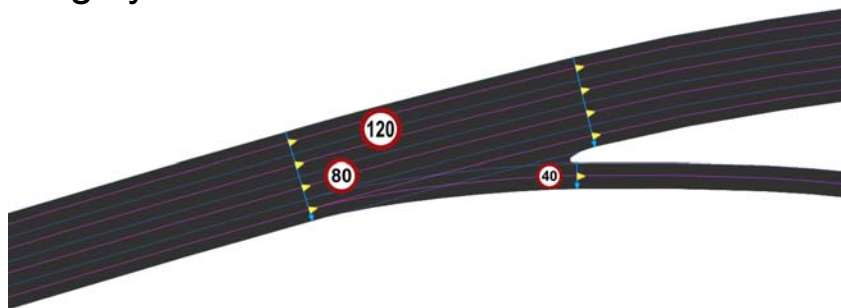
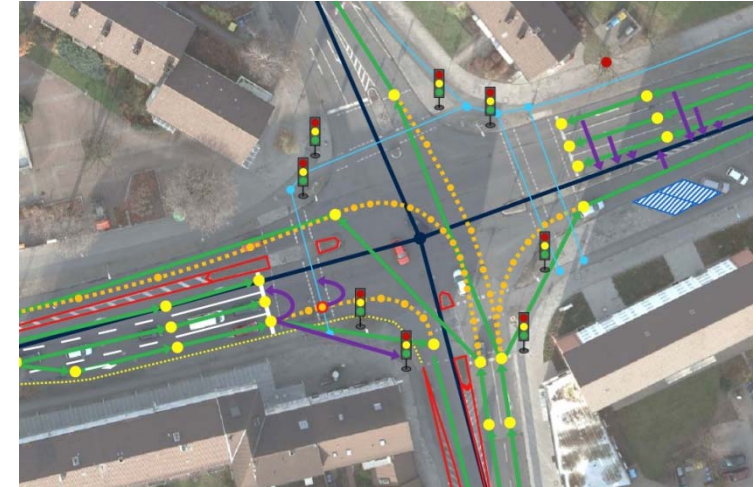




# Automotive Grade Map Technology for Auto Drive

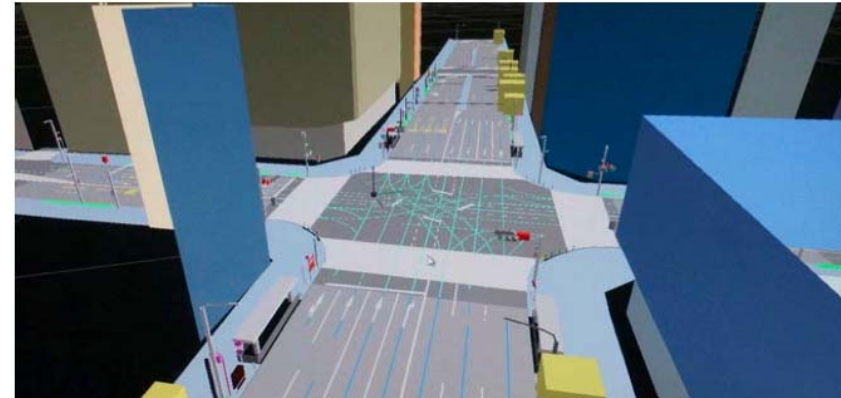
- **Auto Drive HD Lane model**

- Introduction of **advanced geometries**
- Lane **center line geometries**
- Lane **boundary geometries and types**  
(e.g. road markings, guardrails, walls, etc.)
- Lane **marking colors**
- **Connectivity** model for simple and **complex intersections**
- Highly accurate **attribution** of lanes



- **Auto Drive HD Positioning model**

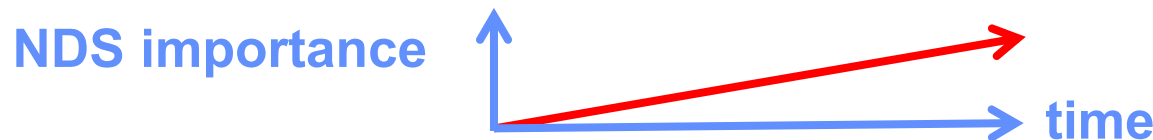
- 3D positioning objects  
(e.g. roadside furniture, house corners, overhead structures etc.)
- Features several material types for improved sensor fusion results  
(e.g. concrete wall vs. transparent wall)



## NDS steps in the next year

- Integrate more requirements of the HAD map onboard and off board
- Take care of more safety/security relevance aspects of HAD maps
- Represent the NDS association with special focus on future legal matters
- Extend re test new incremental update options including prototyping
- Focus on new solutions for voice recognition
- Integrate metropolitan traffic management requirements
- Intensify the cooperation with associations like VDA

More than a PSF



16

# A GLOBAL AUTO DRIVE MAP

---



**NDS provides the leading world-wide map standard for automotive grade use**

**< VISION >**

17