

Guyana

**FOCAL POINT REGARDING CORRESPONDENCE ON THIS QUESTIONNAIRE  
(PARTS I AND II)**

1. Mr. Singh Family Name Valmikki First Name
2. Country Guyana
3. Name of the Administration/Organization National Frequency Management Unit
4. Title Engineer – Spectrum Planning / International Relations
5. Address 68 Hadfield Street D'Urban Park, Georgetown, Guyana.
6. Tel.: 592/2/63976 Fax: 592/2/67661 E-Mail: nfmu@guyana.net.gy

*To be returned no later than **31 January 2000** to:  
ITU-D Study Groups Secretariat  
Telecommunication Development Bureau  
Fax: +41 22 730 54 84  
E-Mail: [devsg2@itu.int](mailto:devsg2@itu.int)*

***In the absence of our own National Table of Radio Frequency Spectrum Allocations, we are guided by ITU's International Frequency Allocations table (presented in the Radio Regulations)***

Guyana

Section IV – Table of Frequency Allocations (extract from the RR, 1998)

Read only			To be completed	
Allocation to services				
Region 1	Region 2	Region 3	National Allocation	Remarks

27.5-47 MHz

27.5-28	METEOROLOGICAL AIDS FIXED MOBILE		Same as ITU's Radio Regulations	
28-29.7	AMATEUR AMATEUR-SATELLITE		Same as ITU's Radio Regulations	
29.7-30.005	FIXED MOBILE		Same as ITU's Radio Regulations	
30.005-30.01	SPACE OPERATION (satellite identification) FIXED MOBILE SPACE RESEARCH		Same as ITU's Radio Regulations	
30.01-37.5	FIXED MOBILE		Same as ITU's Radio Regulations	
37.5-38.25	FIXED MOBILE Radio astronomy S5.149		Same as ITU's Radio Regulations	
38.25-39.986	FIXED MOBILE		Same as ITU's Radio Regulations	
39.986-40.02	FIXED MOBILE Space research		Same as ITU's Radio Regulations	

Guyana

Read only			To be completed	
Allocation to services				
Region 1	Region 2	Region 3	National Allocation	Remarks
<b>40.02-40.98</b>	FIXED MOBILE S5.150		<b>Same as ITU's Radio Regulations</b>	
<b>40.98-41.015</b>	FIXED MOBILE Space research S5.160 S5.161		<b>Same as ITU's Radio Regulations</b>	
<b>41.015-44</b>	FIXED MOBILE S5.160 S5.161		<b>Same as ITU's Radio Regulations</b>	
<b>44-47</b>	FIXED MOBILE S5.162 S5.162A		<b>Same as ITU's Radio Regulations</b>	

**47-75.2 MHz**

<b>47-68</b> BROADCASTING	<b>47-50</b> FIXED MOBILE	<b>47-50</b> FIXED MOBILE BROADCASTING	<b>Same as ITU's Radio Regulations</b>	
	<b>50-54</b> AMATEUR S5.166 S5.167 S5.168 S5.170		<b>Same as ITU's Radio Regulations</b>	
	<b>54-68</b> BROADCASTING Fixed Mobile	<b>54-68</b> FIXED MOBILE BROADCASTING	<b>Same as ITU's Radio Regulations</b>	

Guyana

Read only			To be completed	
Allocation to services				
Region 1	Region 2	Region 3	National Allocation	Remarks
S5.162A S5.163 S5.164 S5.165 S5.169 S5.171	S5.172		<b>Same as ITU's Radio Regulations</b>	
<b>68-74.8</b> FIXED MOBILE except aeronautical mobile          S5.149 S5.174 S5.175 S5.177 S5.179	<b>68-72</b> BROADCASTING Fixed Mobile S5.173	<b>68-74.8</b> FIXED MOBILE          S5.149 S5.176 S5.179	<b>Same as ITU's Radio Regulations</b>	
	<b>72-73</b> FIXED MOBILE		<b>Same as ITU's Radio Regulations</b>	
	<b>73-74.6</b> RADIO ASTRONOMY S5.178		<b>Same as ITU's Radio Regulations</b>	
	<b>74.6-74.8</b> FIXED MOBILE		<b>Same as ITU's Radio Regulations</b>	
<b>74.8-75.2</b>	AERONAUTICAL RADIONAVIGATION S5.180 S5.181		<b>Same as ITU's Radio Regulations</b>	

Guyana

Read only			To be completed	
Allocation to services				
Region 1	Region 2	Region 3	National Allocation	Remarks

75.2-137.175 MHz

<b>75.2-87.5</b> FIXED MOBILE except aeronautical mobile  S5.175 S5.179 S5.184 S5.187	<b>75.2-75.4</b> FIXED MOBILE S5.179		<b>Same as ITU's Radio Regulations</b>	
	<b>75.4-76</b> FIXED MOBILE	<b>75.4-87</b> FIXED MOBILE  S5.149 S5.182 S5.183 S5.188	<b>Same as ITU's Radio Regulations</b>	
	<b>76-88</b> BROADCASTING Fixed Mobile		<b>Same as ITU's Radio Regulations</b>	
	S5.175 S5.179 S5.184 S5.187	<b>87-100</b> FIXED MOBILE BROADCASTING	<b>Same as ITU's Radio Regulations</b>	
<b>87.5-100</b> BROADCASTING  S5.190	S5.185  <b>88-100</b> BROADCASTING	<b>Same as ITU's Radio Regulations</b>		
<b>100-108</b>	BROADCASTING S5.192 S5.194		<b>Same as ITU's Radio Regulations</b>	
<b>108-117.975</b>	AERONAUTICAL RADIONAVIGATION S5.197		<b>Same as ITU's Radio Regulations</b>	
<b>117.975-137</b>	AERONAUTICAL MOBILE (R) S5.111 S5.198 S5.199 S5.200 S5.201 S5.202 S5.203 S5.203A S5.203B		<b>Same as ITU's Radio Regulations</b>	

Guyana

Read only			To be completed	
Allocation to services				
Region 1	Region 2	Region 3	National Allocation	Remarks
<b>137-137.025</b>	SPACE OPERATION (space-to-Earth) METEOROLOGICAL-SATELLITE (space-to-Earth) MOBILE-SATELLITE (space-to-Earth) S5.208A S5.209 SPACE RESEARCH (space-to-Earth) Fixed Mobile except aeronautical mobile (R) S5.204 S5.205 S5.206 S5.207 S5.208		<b>Same as ITU's Radio Regulations</b>	
<b>137.025-137.175</b>	SPACE OPERATION (space-to-Earth) METEOROLOGICAL-SATELLITE (space-to-Earth) SPACE RESEARCH (space-to-Earth) Fixed Mobile-satellite (space-to-Earth) S5.208A S5.209 Mobile except aeronautical mobile (R) S5.204 S5.205 S5.206 S5.207 S5.208		<b>Same as ITU's Radio Regulations</b>	

**137.175-148 MHz**

<b>137.175-137.825</b>	SPACE OPERATION (space-to-Earth) METEOROLOGICAL-SATELLITE (space-to-Earth) MOBILE-SATELLITE (space-to-Earth) S5.208A S5.209 SPACE RESEARCH (space-to-Earth) Fixed Mobile except aeronautical mobile (R) S5.204 S5.205 S5.206 S5.207 S5.208		<b>Same as ITU's Radio Regulations</b>	
------------------------	--	--	--	--

Guyana

Read only			To be completed	
Allocation to services				
Region 1	Region 2	Region 3	National Allocation	Remarks
<b>137.825-138</b>	SPACE OPERATION (space-to-Earth) METEOROLOGICAL-SATELLITE (space-to-Earth) SPACE RESEARCH (space-to-Earth) Fixed Mobile-satellite (space-to-Earth) S5.208A S5.209 Mobile except aeronautical mobile (R) S5.204 S5.205 S5.206 S5.207 S5.208		<b>Same as ITU's Radio Regulations</b>	
<b>138-143.6</b> AERONAUTICAL MOBILE (OR)  S5.210 S5.211 S5.212 S5.214	<b>138-143.6</b> FIXED MOBILE RADIOLOCATION Space research (space-to-Earth)	<b>138-143.6</b> FIXED MOBILE Space research (space-to-Earth) S5.207 S5.213	<b>Same as ITU's Radio Regulations</b>  <b>Same as ITU's Radio Regulations</b>	
<b>143.6-143.65</b> AERONAUTICAL MOBILE (OR) SPACE RESEARCH (space-to-Earth)  S5.211 S5.212 S5.214	<b>143.6-143.65</b> FIXED MOBILE RADIOLOCATION SPACE RESEARCH (space-to-Earth)	<b>143.6-143.65</b> FIXED MOBILE SPACE RESEARCH (space-to-Earth) S5.207 S5.213	<b>Same as ITU's Radio Regulations</b>	
<b>143.65-144</b> AERONAUTICAL MOBILE (OR)  S5.210 S5.211 S5.212 S5.214	<b>143.65-144</b> FIXED MOBILE RADIOLOCATION Space research (space-to-Earth)	<b>143.65-144</b> FIXED MOBILE Space research (space-to-Earth) S5.207 S5.213	<b>Same as ITU's Radio Regulations</b>	



Guyana

Read only			To be completed	
Allocation to services				
Region 1	Region 2	Region 3	National Allocation	Remarks
<b>144-146</b>	AMATEUR S5.120 AMATEUR-SATELLITE S5.216		<b>Same as ITU's Radio Regulations</b>	
<b>146-148</b> FIXED MOBILE except aeronautical mobile (R)	<b>146-148</b> AMATEUR  S5.217	<b>146-148</b> AMATEUR FIXED MOBILE S5.217	<b>Same as ITU's Radio Regulations</b>  <b>Same as ITU's Radio Regulations</b>	
<b>148-149.9</b> FIXED MOBILE except aeronautical mobile (R) MOBILE-SATELLITE (Earth-to-space) S5.209 S5.218 S5.219 S5.221	<b>148-149.9</b> FIXED MOBILE MOBILE-SATELLITE (Earth-to-space) S5.209  S5.218 S5.219 S5.221		<b>Same as ITU's Radio Regulations</b>  <b>Same as ITU's Radio Regulations</b>	
<b>149.9-150.05</b>	MOBILE-SATELLITE (Earth-to-space) S5.209 S5.224A RADIONAVIGATION-SATELLITE S5.224B S5.220 S5.222 S5.223		<b>Same as ITU's Radio Regulations</b>	

Guyana

Read only			To be completed	
Allocation to services				
Region 1	Region 2	Region 3	National Allocation	Remarks
<b>150.05-153</b> FIXED MOBILE except aeronautical mobile RADIO ASTRONOMY S5.149	<b>150.05-156.7625</b> FIXED MOBILE		<b>Same as ITU's Radio Regulations</b>	
<b>153-154</b> FIXED MOBILE except aeronautical mobile (R) Meteorological Aids			<b>Same as ITU's Radio Regulations</b>	
<b>154-156.7625</b> FIXED MOBILE except aeronautical mobile (R) S5.226 S5.227		S5.225 S5.226 S5.227	<b>Same as ITU's Radio Regulations</b>	
			<b>Same as ITU's Radio Regulations</b>	
<b>156.7625-156.8375</b>	MARITIME MOBILE (distress and calling) S5.111 S5.226		<b>Same as ITU's Radio Regulations</b>	
<b>156.8375-174</b> FIXED MOBILE except aeronautical mobile S5.226 S5.229	<b>156.8375-174</b> FIXED MOBILE S5.226 S5.230 S5.231 S5.232		<b>Same as ITU's Radio Regulations</b>  <b>Same as ITU's Radio Regulations</b>	

Guyana

Read only			To be completed	
Allocation to services				
Region 1	Region 2	Region 3	National Allocation	Remarks
<b>174-223</b> BROADCASTING  S5.235 S5.237 S5.243	<b>174-216</b> BROADCASTING Fixed Mobile S5.234	<b>174-223</b> FIXED MOBILE BROADCASTING  S5.233 S5.238 S5.240 S5.245	<b>Same as ITU's Radio Regulations</b>	
	<b>216-220</b> FIXED MARITIME MOBILE Radiolocation S5.241 S5.242		<b>Same as ITU's Radio Regulations</b>	
			<b>Same as ITU's Radio Regulations</b>	

**220-335.4 MHz**

	<b>220-225</b>		<b>Same as ITU's Radio Regulations</b>	
<b>223-230</b> BROADCASTING Fixed Mobile  S5.243 S5.246 S5.247	AMATEUR FIXED MOBILE Radiolocation S5.241	<b>223-230</b> FIXED MOBILE BROADCASTING	<b>Same as ITU's Radio Regulations</b>	
	<b>225-235</b> FIXED MOBILE	AERONAUTICAL RADIONAVIGATION Radiolocation S5.250	<b>Same as ITU's Radio Regulations</b>	

Guyana

Read only			To be completed	
Allocation to services				
Region 1	Region 2	Region 3	National Allocation	Remarks
<b>230-235</b> FIXED MOBILE  S5.247 S5.251 S5.252		<b>230-235</b> FIXED MOBILE AERONAUTICAL RADIONAVIGATION S5.250	Same as ITU's Radio Regulations	
<b>235-267</b>	FIXED MOBILE S5.111 S5.199 S5.252 S5.254 S5.256		FIXED, MOBILE 246-242 Cable O, over-the-air TV broadcast 1600W (EIRP)	
<b>267-272</b>	FIXED MOBILE Space operation (space-to-Earth) S5.254 S5.257		Same as ITU's Radio Regulations	
<b>272-273</b>	SPACE OPERATION (space-to-Earth) FIXED MOBILE S5.254		Same as ITU's Radio Regulations	
<b>273-312</b>	FIXED MOBILE S5.254		Same as ITU's Radio Regulations	
<b>312-315</b>	FIXED MOBILE Mobile-satellite (Earth-to-space) S5.254 S5.255		Same as ITU's Radio Regulations	
<b>315-322</b>	FIXED MOBILE S5.254		Same as ITU's Radio Regulations	

Guyana

Read only			To be completed	
Allocation to services				
Region 1	Region 2	Region 3	National Allocation	Remarks
322-328.6	FIXED MOBILE RADIO ASTRONOMY S5.149		<b>Same as ITU's Radio Regulations</b>	
328.6-335.4	AERONAUTICAL RADIONAVIGATION S5.258 S5.259		<b>Same as ITU's Radio Regulations</b>	

335.4-410 MHz

335.4-387	FIXED MOBILE S5.254		<b>Same as ITU's Radio Regulations</b>	
387-390	FIXED MOBILE Mobile-satellite (space-to-Earth) S5.208A S5.254 S5.255		<b>Same as ITU's Radio Regulations</b>	
390-399.9	FIXED MOBILE S5.254		<b>Same as ITU's Radio Regulations</b>	
399.9-400.05	MOBILE-SATELLITE (Earth-to-space) S5.209 S5.224A RADIONAVIGATION-SATELLITE S5.222 S5.224B S5.260 S5.220		<b>Same as ITU's Radio Regulations</b>	
400.05-400.15	STANDARD FREQUENCY AND TIME SIGNAL- SATELLITE (400.1 MHz) S5.261 S5.262		<b>Same as ITU's Radio Regulations</b>	

Guyana

Read only			To be completed	
Allocation to services				
Region 1	Region 2	Region 3	National Allocation	Remarks
<b>400.15-401</b>	METEOROLOGICAL AIDS METEOROLOGICAL-SATELLITE (space-to-Earth) MOBILE-SATELLITE (space-to-Earth) S5.208A S5.209 SPACE RESEARCH (space-to-Earth) S5.263 Space operation (space-to-Earth) S5.262 S5.264		<b>Same as ITU's Radio Regulations</b>	
<b>401-402</b>	METEOROLOGICAL AIDS SPACE OPERATION (space-to-Earth) EARTH EXPLORATION-SATELLITE (Earth-to-space) METEOROLOGICAL-SATELLITE (Earth-to-space) Fixed Mobile except aeronautical mobile		<b>Same as ITU's Radio Regulations</b>	
<b>402-403</b>	METEOROLOGICAL AIDS EARTH EXPLORATION-SATELLITE (Earth-to-space) METEOROLOGICAL-SATELLITE (Earth-to-space) Fixed Mobile except aeronautical mobile		<b>Same as ITU's Radio Regulations</b>	
<b>403-406</b>	METEOROLOGICAL AIDS Fixed Mobile except aeronautical mobile		<b>Same as ITU's Radio Regulations</b>	
<b>406-406.1</b>	MOBILE-SATELLITE (Earth-to-space) S5.266 S5.267		<b>Same as ITU's Radio Regulations</b>	
<b>406.1-410</b>	FIXED MOBILE except aeronautical mobile RADIO ASTRONOMY S5.149		<b>Same as ITU's Radio Regulations</b>	

Guyana

Read only			To be completed	
Allocation to services				
Region 1	Region 2	Region 3	National Allocation	Remarks
<b>410-470 MHz</b>				
<b>410-420</b>	FIXED MOBILE except aeronautical mobile SPACE RESEARCH (space-to-space) S5.268		<b>Same as ITU's Radio Regulations</b>	
<b>420-430</b>	FIXED MOBILE except aeronautical mobile Radiolocation S5.269 S5.270 S5.271		<b>Same as ITU's Radio Regulations</b>	
<b>430-440</b> AMATEUR RADIOLOCATION S5.138 S5.271 S5.272 S5.273 S5.274 S5.275 S5.276 S5.277 S5.280 S5.281 S5.282 S5.283	<b>430-440</b> RADIOLOCATION Amateur  S5.271 S5.276 S5.277 S5.278 S5.279 S5.281 S5.282		<b>Same as ITU's Radio Regulations</b>	
<b>440-450</b>	FIXED MOBILE except aeronautical mobile Radiolocation S5.269 S5.270 S5.271 S5.284 S5.285 S5.286		<b>Same as ITU's Radio Regulations</b>	
<b>450-455</b>	FIXED MOBILE S5.209 S5.271 S5.286 S5.286A S5.286B S5.286C S5.286D S5.286E		<b>Same as ITU's Radio Regulations</b>	
<b>455-456</b> FIXED MOBILE	<b>455-456</b> FIXED MOBILE MOBILE-SATELLITE (Earth-to-space) S5.286A S5.286B S5.286C	<b>455-456</b> FIXED MOBILE	<b>Same as ITU's Radio Regulations</b>	

Guyana

Read only			To be completed	
Allocation to services				
Region 1	Region 2	Region 3	National Allocation	Remarks
S5.209 S5.271 S5.286A S5.286B S5.286C S5.286E	S5.209 S5.271	S5.209 S5.271 S5.286A S5.286B S5.286C S5.286E	Same as ITU's Radio Regulations	
<b>456-459</b>	FIXED MOBILE S5.271 S5.287 S5.288		Same as ITU's Radio Regulations	
<b>459-460</b> FIXED MOBILE  S5.209 S5.271 S5.286A S5.286B S5.286C S5.286E	<b>459-460</b> FIXED MOBILE MOBILE-SATELLITE (Earth-to-space) S5.286A S5.286B S5.286C S5.209 S5.271	<b>459-460</b> FIXED MOBILE  S5.209 S5.271 S5.286A S5.286B S5.286C S5.286E	Same as ITU's Radio Regulations  Same as ITU's Radio Regulations	
<b>460-470</b>	FIXED MOBILE Meteorological-Satellite (space-to-Earth) S5.287 S5.288 S5.289 S5.290		Same as ITU's Radio Regulations	



Guyana

Read only			To be completed	
Allocation to services				
Region 1	Region 2	Region 3	National Allocation	Remarks

470-890 MHz

<p><b>470-790</b> BROADCASTING</p> <p>S5.149 S5.291A S5.294 S5.296 S5.300 S5.302 S5.304 S5.306 S5.311 S5.312</p>	<p><b>470-512</b> BROADCASTING Fixed Mobile S5.292 S5.293</p> <hr/> <p><b>512-608</b> BROADCASTING S5.297</p> <hr/> <p><b>608-614</b> RADIO ASTRONOMY Mobile-satellite except aeronautical mobile-satellite (Earth-to-space)</p> <hr/> <p><b>614-806</b> BROADCASTING Fixed Mobile S5.293 S5.309 S5.311</p> <hr/> <p><b>806-890</b> FIXED MOBILE BROADCASTING</p>	<p><b>470-585</b> FIXED MOBILE BROADCASTING</p> <p>S5.291 S5.298</p> <hr/> <p><b>585-610</b> FIXED MOBILE BROADCASTING RADIONAVIGATION S5.149 S5.305 S5.306 S5.307</p> <hr/> <p><b>610-890</b> FIXED MOBILE BROADCASTING</p>	<p style="text-align: center;"><b>Same as ITU's Radio Regulations</b></p>	
<p><b>790-862</b> FIXED BROADCASTING S5.312 S5.314 S5.315 S5.316 S5.319 S5.321</p>				

Guyana

Read only			To be completed	
Allocation to services				
Region 1	Region 2	Region 3	National Allocation	Remarks
<b>862-890</b> FIXED MOBILE except aeronautical mobile BROADCASTING S5.322			<b>Same as ITU's                      Radio Regulations</b>	
S5.319 S5.323	S5.317 S5.318	S5.149 S5.305 S5.306 S5.307 S5.311 S5.320	<b>Same as ITU's                      Radio Regulations</b>	

890-1 350 MHz

<b>890-942</b> FIXED MOBILE except aeronautical mobile BROADCASTING S5.322 Radiolocation  S5.323	<b>890-902</b> FIXED MOBILE except aeronautical mobile Radiolocation S5.318 S5.325	<b>890-942</b> FIXED MOBILE BROADCASTING Radiolocation  S5.327	<b>Same as ITU's                      Radio Regulations</b>	
	<b>902-928</b> FIXED Amateur Mobile except aeronautical mobile Radiolocation S5.150 S5.325 S5.326		<b>Same as ITU's                      Radio Regulations</b>	
	<b>928-942</b> FIXED MOBILE except aeronautical mobile Radiolocation S5.325		<b>Same as ITU's                      Radio Regulations</b>  <b>Same as ITU's                      Radio Regulations</b>	

Guyana

Read only			To be completed	
Allocation to services				
Region 1	Region 2	Region 3	National Allocation	Remarks
<b>942-960</b> FIXED MOBILE except aeronautical mobile BROADCASTING S5.322 S5.323	<b>942-960</b> FIXED MOBILE	<b>942-960</b> FIXED MOBILE BROADCASTING  S5.320	<b>Same as ITU's                      Radio Regulations</b>       <b>Same as ITU's                      Radio Regulations</b>	

**QUESTIONNAIRE - PART II  
(To be completed by Administrations only)**

**General Questions on National Spectrum Management**

**Describe succinctly the problems that your administration is currently experiencing in national spectrum management (for example subject areas in national spectrum management).**

Country Guyana

Focal point Spectrum Management

The following general questions on national spectrum management are based in part on the functional requirements of spectrum management described in the handbook on “National Spectrum Management.” If you need additional space to answer the questions please continue on a separate sheet of paper.

- 1. Do you have a national law governing spectrum management? YES X NO
- Last date this law was changed or modified? 1973
- Are any actions planned to change this law? YES X NO

Have any problems been identified? and if so, do you need any assistance from the ITU in solving them?

We need guidance in including the new services and technologies and promoting efficient use of the spectrum in our proposed new law. Yes, we need assistance from the ITU in this area.

- 2. Have you published regulations and procedures for national spectrum management (e.g. radio services, license requirements etc.)? YES    NO X

Have any problems been identified? and if so, do you need any assistance from the ITU in solving them?

We would appreciate assistance from the ITU in the structuring of these regulations & procedures.

- 3. Do you have a national radio frequency spectrum allocation table? YES    NO X

Have any problems been identified? and if so, do you need any assistance from the ITU in solving them?

Our technical staff are relatively inexperienced in this area, hence assistance from the ITU would be appreciated.

Guyana

4. Do you have technical specifications for national spectrum use? YES\_\_ NO X

Have any problems been identified? and if so, do you need any assistance from the ITU in solving them?

We have started the process of adopting/adapting established specifications however, we still need assistance from the ITU.

5. Do you have a need for any spectrum redeployment\* ? YES\_\_ NO X

\* The term "redemption" is used here to refer to a process of national scope in which an assessment is conducted 1) to determine if portions of spectrum can be identified that are in limited use; and 2) to determine if such spectrum segments can be reallocated for use in delivering radiocommunication services that have expanding spectrum requirements.

- If so, do you have a strategy for achieving this redeployment in respective frequency bands and for given radiocommunication services? YES\_\_ NO\_\_

- Please define the established strategy and describe the nature of the consultation, if any, with users regarding the potential costs resulting from the planned redeployment.

This area of our spectrum management has not been fully studied as yet. However, we plan to analyze such in the future.

6. What is the total cost of national spectrum management functions performed by your Government (expressed in Swiss francs)? \$630,000.00

- What is the source of the funding required to accomplish these spectrum management functions?

Our primary source of funding comes from spectrum usage fees collected from users of the EM spectrum.

7. Do you have a method for establishing spectrum users' fees? YES X NO\_\_

- If so, please give a brief description of the method used in establishing those fees.

Spectrum users' fees is a function of the frequency used, coverage area and bandwidth. We are currently looking at improving this structure and would appreciate ITU's assistance.

8. Do you maintain centralized databases for spectrum management? YES X NO\_\_

- What is the approximate size of your database (expressed in number of records)? 1600

- Do you have a computerized data base management system (DBMS)? YES\_\_ Partially X

- What DBMS system do you use? Microsoft access

Guyana

- Are these frequency assignment records available to public? YES\_\_ NO X

Have any problems been identified? and if so, do you need any assistance from the ITU in solving them?

Confidentiality of information. Some information is available on request.

9. Do you notify frequency assignments to the ITU? YES\_\_ NO X

Have any problems been identified? and if so, do you need any assistance from the ITU in solving them?

The procedure for notification is not clear we would appreciate ITU's help.

10. Do you have a policy and planning function for national spectrum management (i.e. a national strategy for future use of the spectrum)? YES X NO\_\_

Have any problems been identified? and if so, do you need any assistance from the ITU in solving them?

We have recently started this function but lack the expertise (inexperienced staff). We definitely need quite a lot of assistance for this important function.

11. Do you perform technical analyses of frequency assignment requests? YES\_\_ NO X

Have any problems been identified? and if so, do you need any assistance from the ITU in solving them?

We need assistance in setting up the basic principles and procedures for these technical analyses including the use of appropriate softwares.

12. Do you perform radio monitoring? YES X NO\_\_

- number of fixed monitoring stations One (1)

- facilities available at fixed monitoring stations

-- monitoring up to 999 MHz

-- direction finding up to nil MHz

Guyana

- number of mobile monitoring stations     nil    

- facilities available at mobile monitoring stations
  - monitoring up to nil MHz
  - direction finding up to nil MHz

Have any problems been identified? and if so, do you need any assistance from the ITU in solving them?

Our equipment is old and very limited. As such, we would appreciate ITU's assistance in helping us source an adequate spectrum monitoring and management system.

13. Do you perform technical analyses of radio frequency interference complaints? YES X NO   

- Do you have an established consultation process, involving Government and non-government organization, for resolving these complaints? YES    NO X

Have any problems been identified? and if so, do you need any assistance from the ITU in solving them?

We need guidance in structuring and establishing a framework for such a process.

14. What computers and operating systems are in use for national spectrum management?

Type of computers     Pentium    

Operating system(s)     P I,II & III    

    windows 98    

Have any problems been identified? and if so, do you need any assistance from the ITU in solving them?

We would like some advise from the ITU on the various types of software that would be appropriate for our relatively small operation.

15. Number of technical/professional staff in national spectrum management?     7    

16. Number of support staff in national spectrum management?     19    

17. Describe your country's spectrum management structure (Please enclose a copy of organization chart).

Guyana

18. Do you use the ITU-R Handbooks and Reports on:

- a) National Spectrum Management, version 1995 ? Yes
- b) Spectrum Monitoring<sup>1</sup>, version 1995? Yes
- c) Computer-aided Techniques for Spectrum Management, version 1999?
- d) HF Broadcasting System Design, version 1999?
- e) Report SM.2012, Economic Aspects of Spectrum Management, version 1997<sup>2</sup>?  
Yes
- f) Windows Basic Automated Spectrum Management System (WinBASMS) Software  
Version 1997, Manual Version 1997? Recently acquired this

What additional information/handbooks do you need from the ITU?

Computer-aided Techniques for Spectrum Management, version 1999

HF Broadcasting System Design, version 1999

National Spectrum Management, version 2000

Report SM.2012, Economic Aspects of Spectrum Management, version 2000

*To be returned no later than 31 January 2000 to:*

*ITU-D Study Groups Secretariat*

*Telecommunication Development Bureau*

*Fax: +41 22 730 54 84*

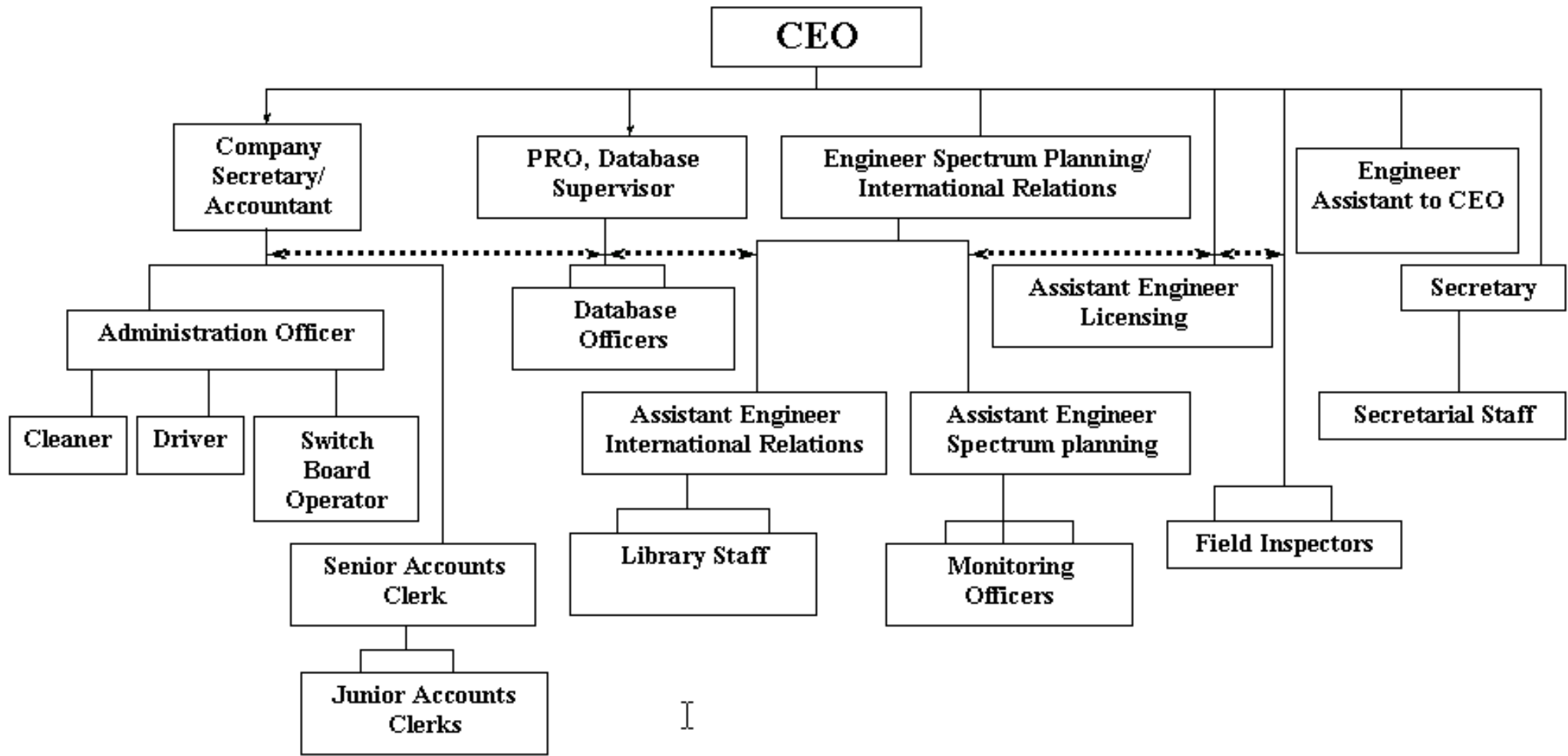
*E-Mail: devsg1@itu.int*

---

<sup>1</sup> The Spectrum Monitoring Handbook is currently being updated, therefore, you are urged to contact Mr Jan Verduijn (NL), the designated Rapporteur from ITU-R Study Group 1, Working Party 1C if you have any comments that you wish included in a future version of this Handbook.

<sup>2</sup> This Report SM.2012 was updated during the ITU-R Study Group 1 meeting in August 1999. This new version is expected to be available in the three working languages by January 2000.





I

ORGANISATIONAL CHART FOR NATIONAL FREQUENCY MANAGEMENT UNIT

(Please note that this structure is currently under review)

