



MOBILNA TELEFONIJA SRBIJE

Vladimir Lučić



The beginning of work was in August 1998

MTS is a part of Telekom Serbia

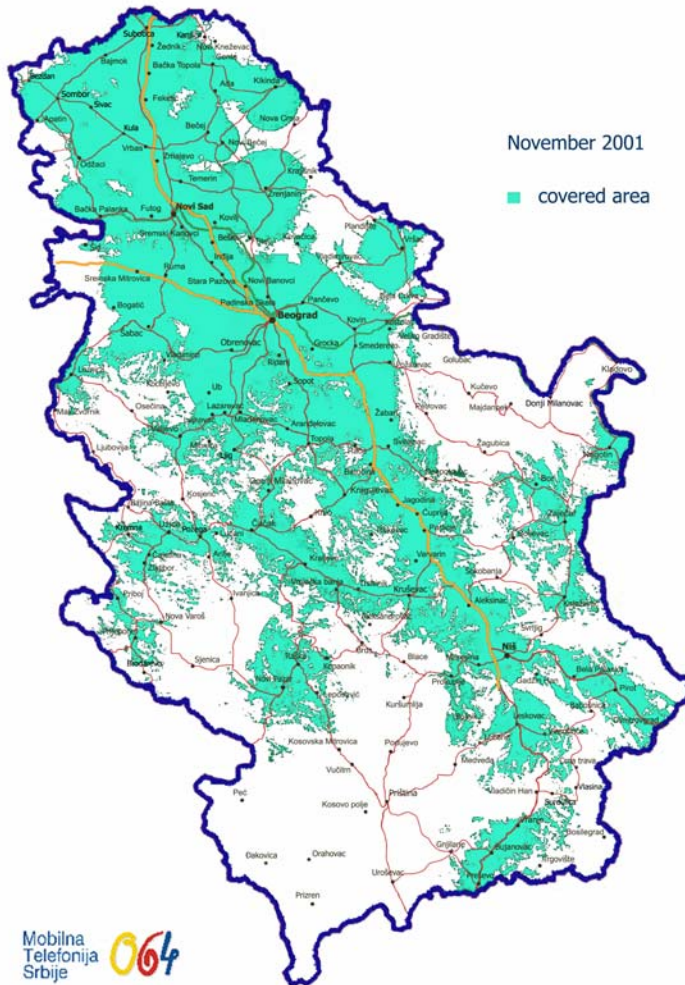
Telekom Serbia is at the same time a fixed and mobile operator and PTT is the majority owner



After the democratic changes in 2000 the great development of Mobile Telephony has started

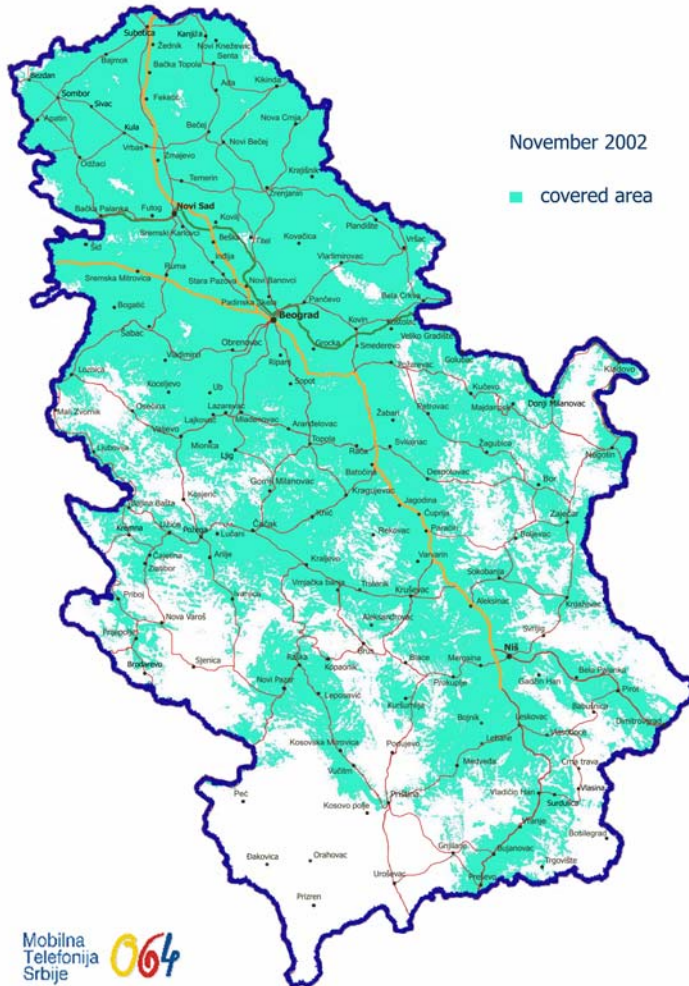
The grow was the most intense in 2002 and it is planned to continue so in 2003

December 2001

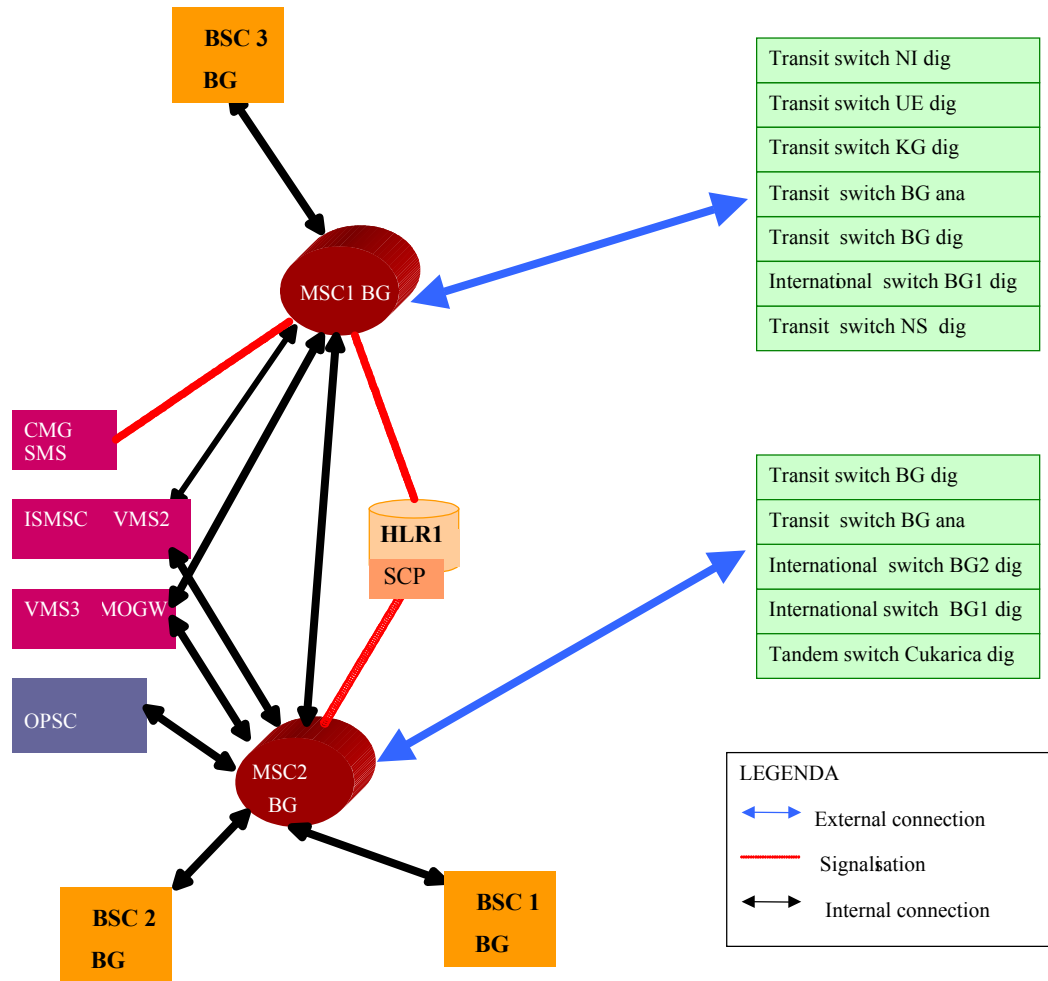


- 133 active base stations
- 43% covered area of Serbia
- 77% population is covered with the MTS 064 Network

December 2002

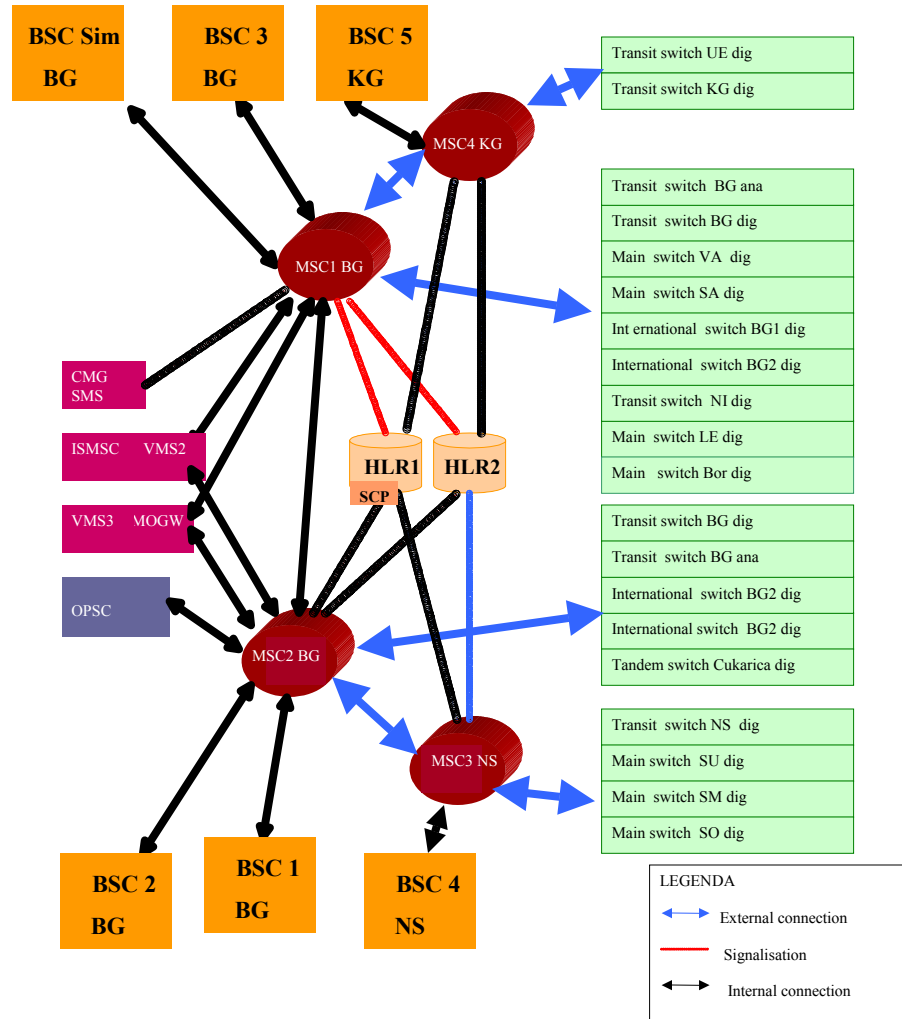


- 300 active base stations
- 64% covered area of Serbia
- 91% population is covered with the MTS 064 Network



LEGENDA

- ↔ External connection
- Signalisation
- ↔ Internal connection

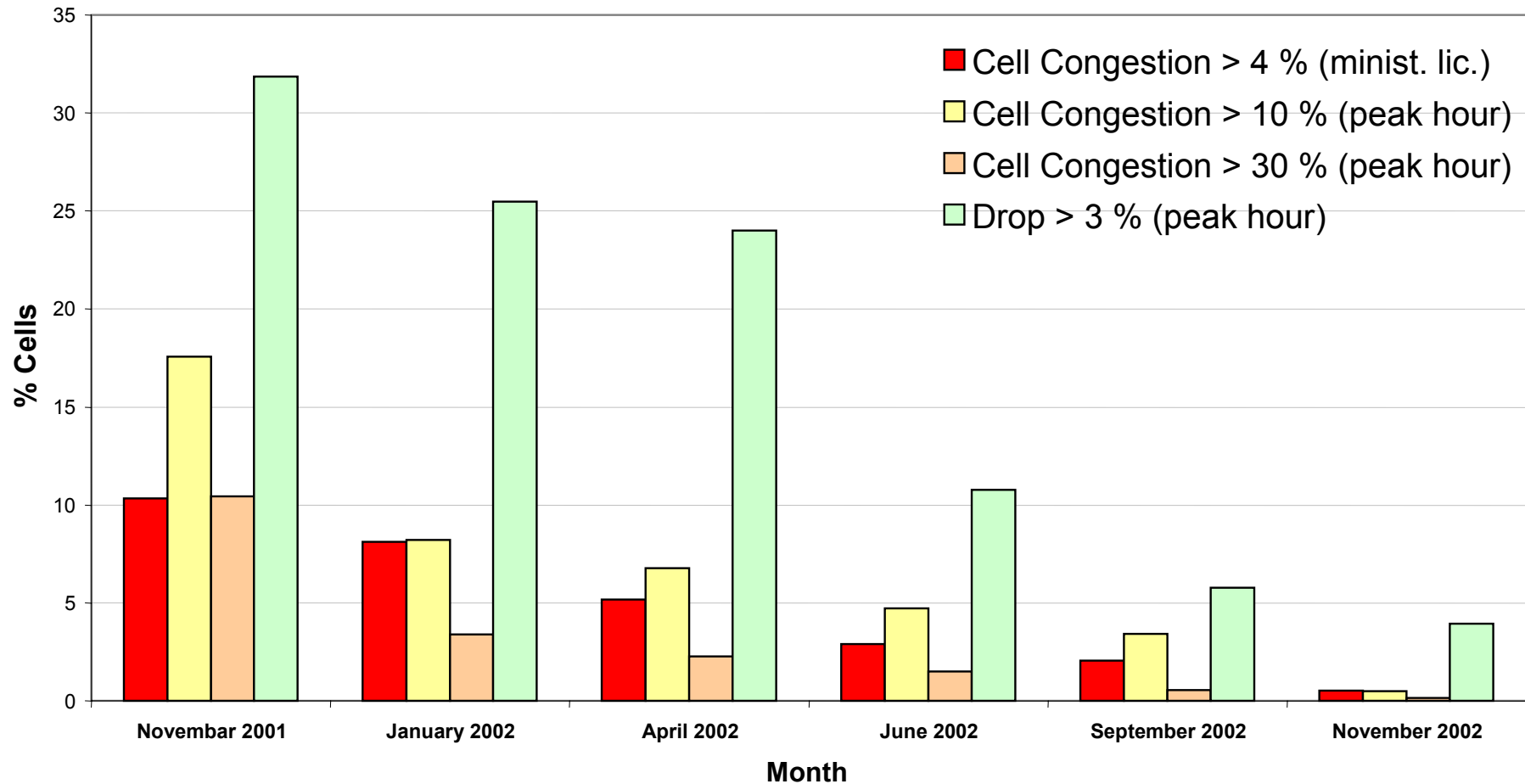


CORE NETWORK	100% ERICSSON
RADIO NETWORK	96,5% ERICSSON
	3,5% SIEMENS

Network Elements	Size as of 05/12/02	Supplier
IN	1	ERICSSON
HLR	2	ERICSSON
MSC	4	ERICSSON
BSC	6	ERICSSON,SIEMENS
BTS	300	ERICSSON, SIEMENS

OTHER NETWORK SYSTEMS
COMVERSE (Voice Mail)
1 CMG SMS-C and 1 COMVERSE SMS-C
SEMA prepaid system
Own microwave transmission network

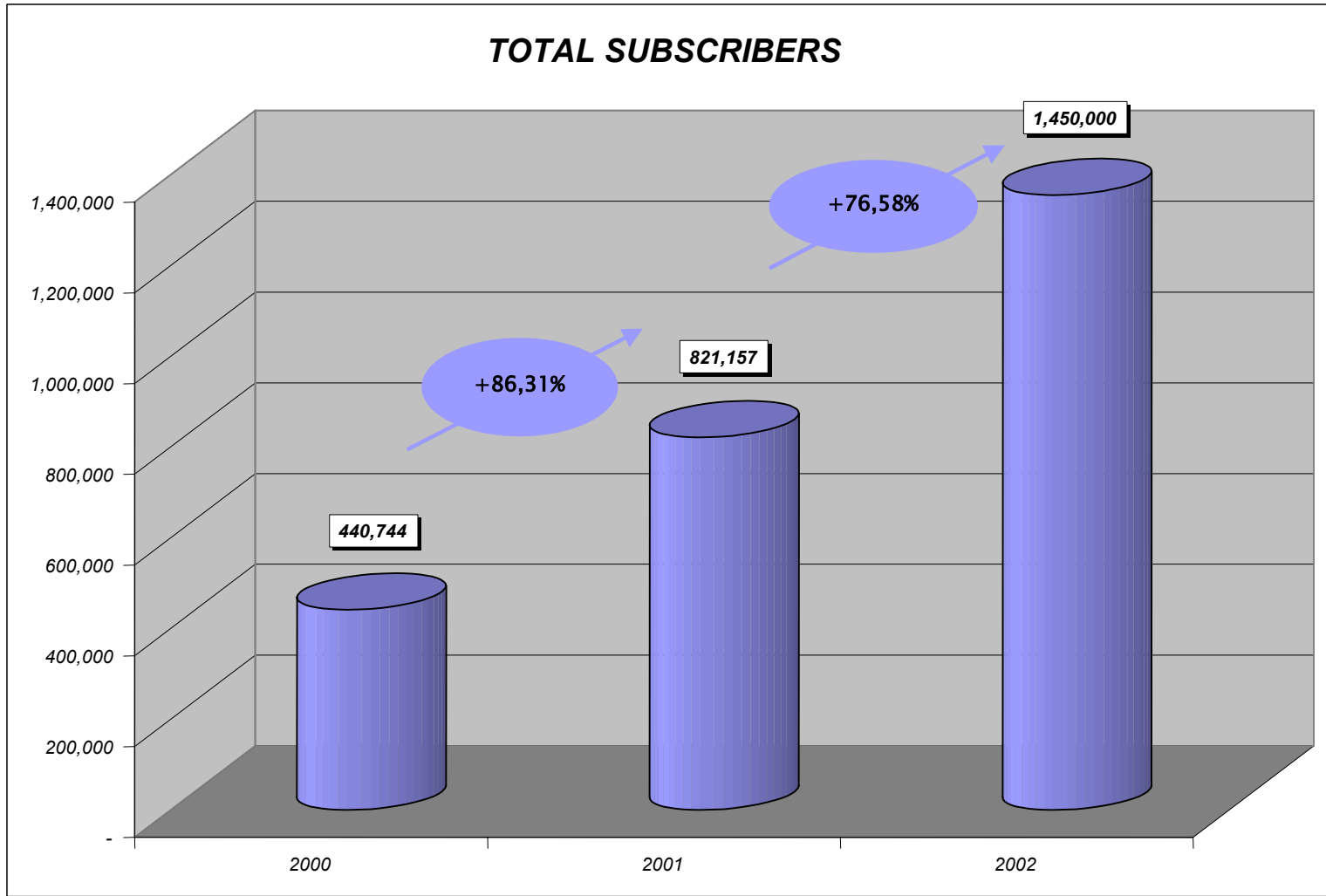
Network measurement parameters

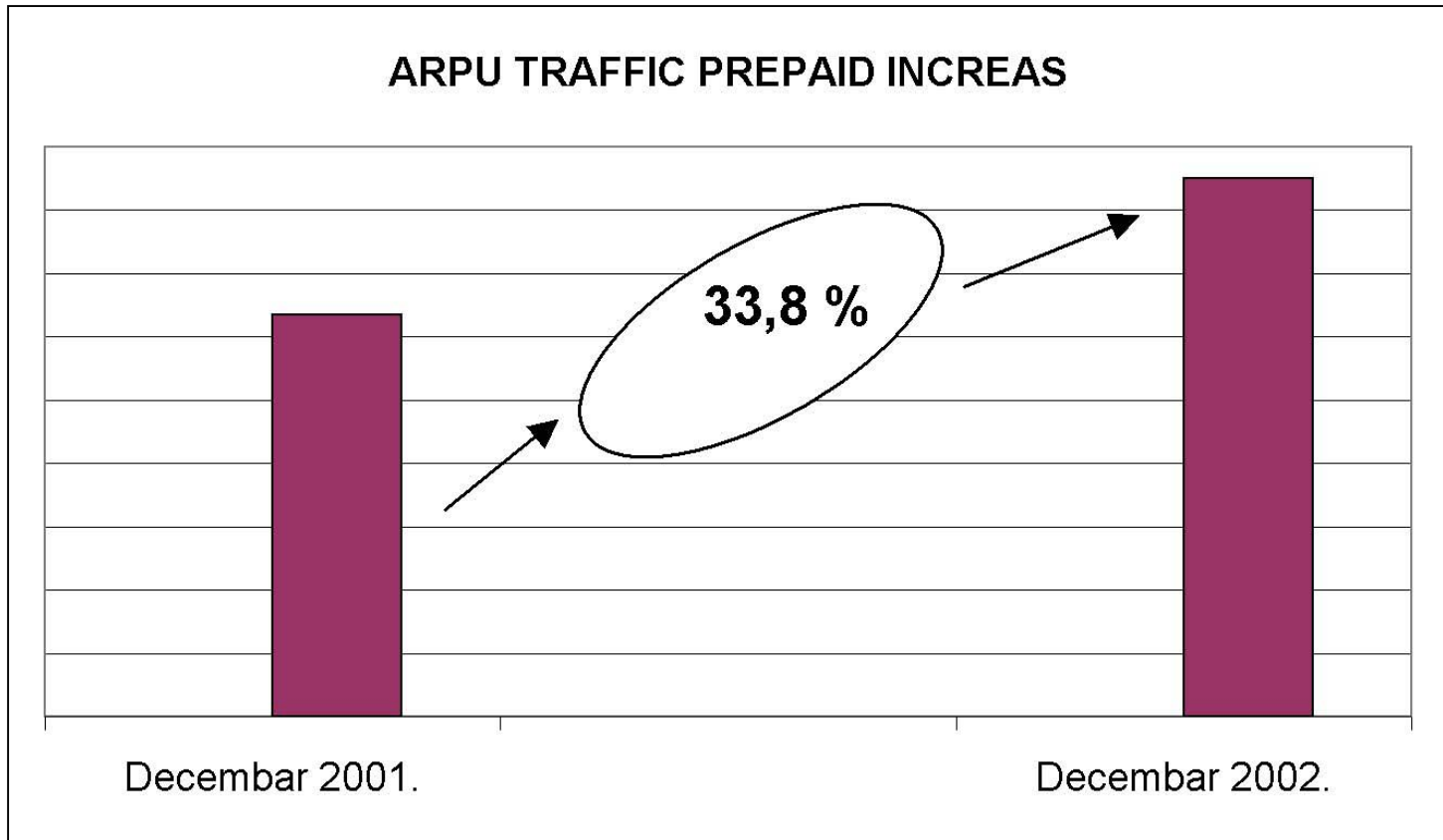


Network Figures

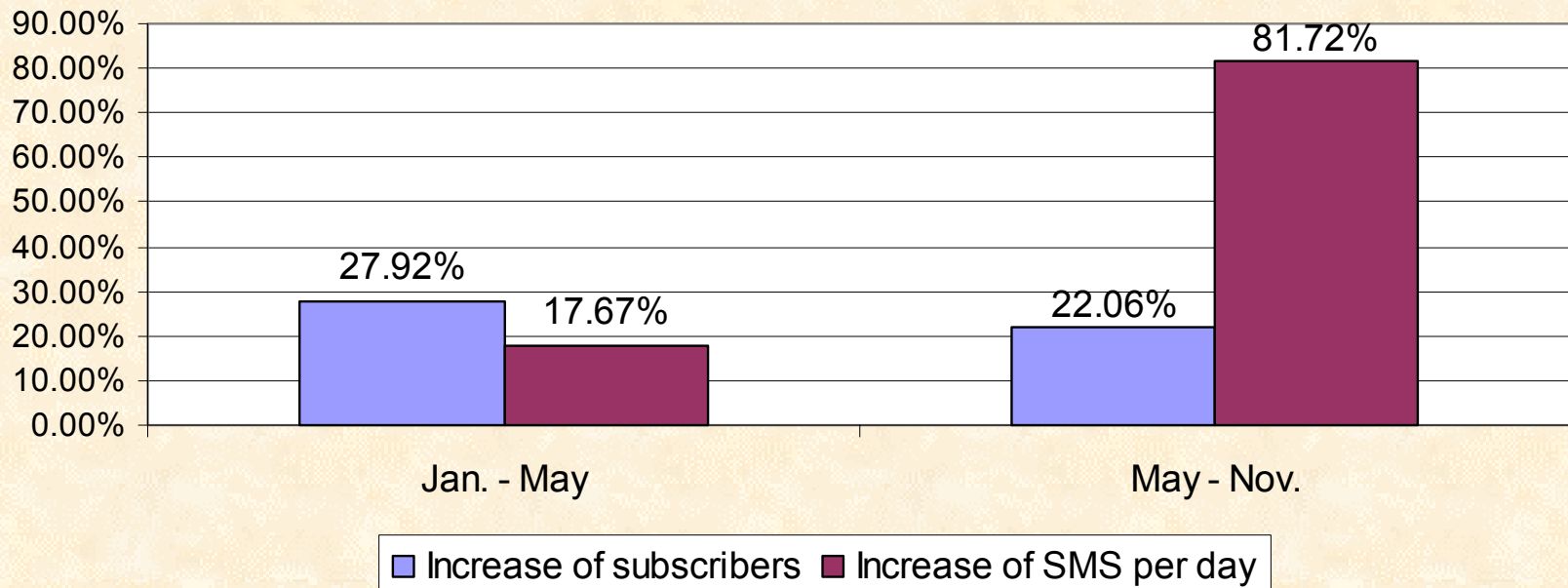
Table

	HLR	MSC	BSC	BTS	Ch	Cover.	mErl/ sub	Cong.	ERL
November 2001	1	2	3	133	6448	43%	5	18% >10%	4250
						77%		11% >30%	
April 2002	2	3	4	168	9106	52%	7	9% >10%	6300
						84%		5% >30%	
November 2002	2	4	6	300	14000	64%	7	0.49% >10%	8000
						91%		0.16% >30%	

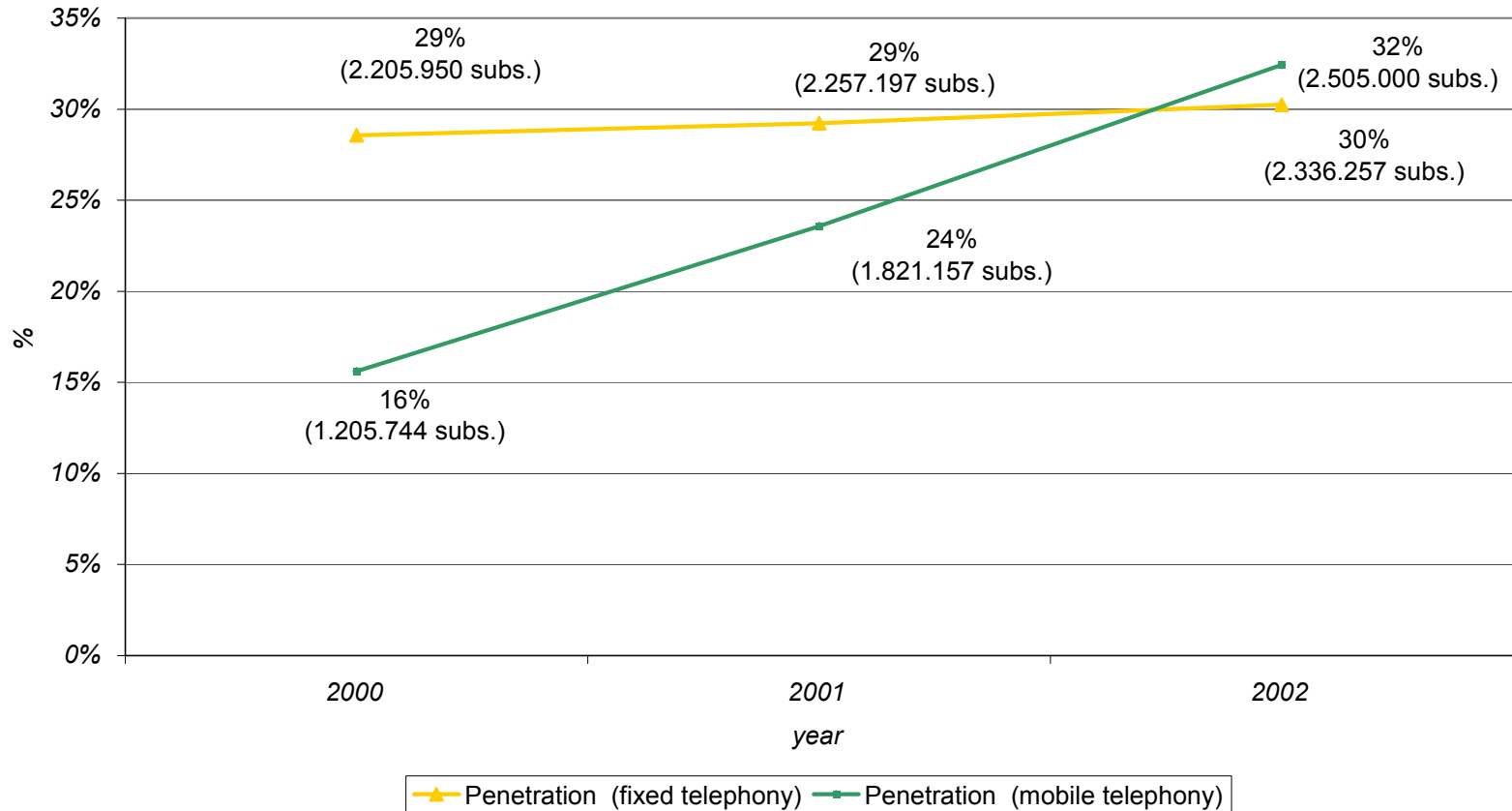




Increase of SMS after launching of VAS services and start of interconnection MTS-Mobtel in May 2002.



PENETRATION (Kosovo excluded)



GSM 900 i GSM 1800	SUBx1000	Band(MHz)	(SUB/MHz)x1000	Area (km ² x1000)	SUB/MHzxkm ²
MTS064	1.05	5	210	41	5.08
TIM	19.24	16	1.202,5	301	4
Mannesman	19.2	17.8	1078,5	357	3.02
T-Mobil	19.1	17.4	1097,7	357	3.07
Omnitel	14.92	15	994,7	301	3.3
Telefonica Movil	13.342	24.4	546,8	506	1.08
France Telecom Mobile	14.311	22.2	644,6	544	1.18
Vodafone	11.489	18.4	624,4	244	2.56
SFR	10.16	22.2	457,7	544	0.64
Cellnet	10.24	18.4	556,5	244	2.28
Airtel	6.9	24.4	282,8	506	0.56
MOBTEL	1.05	25	42	77	0.54

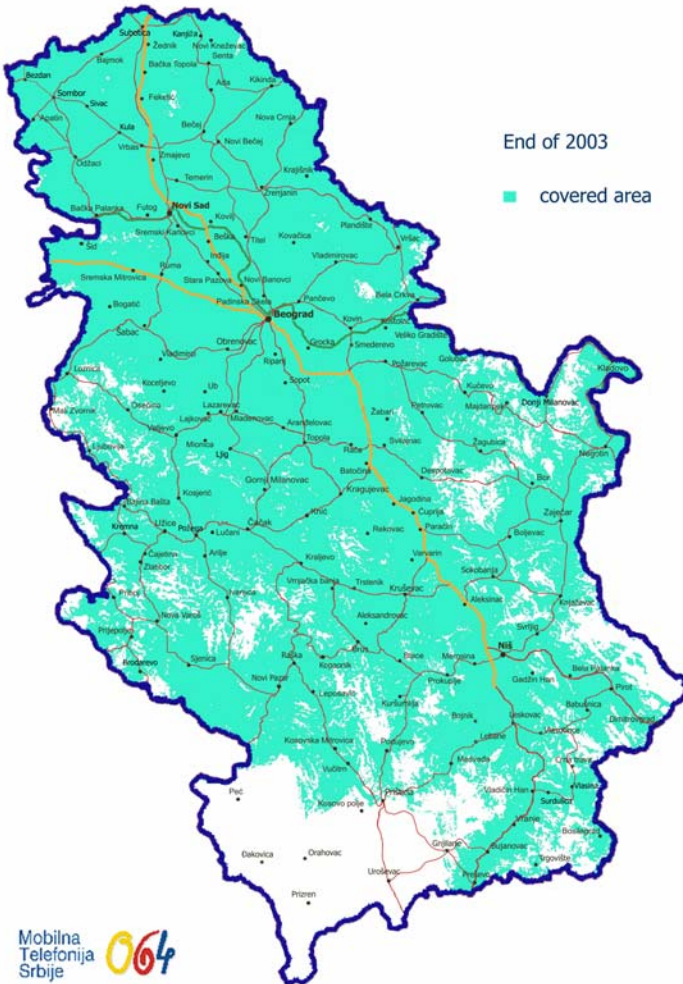
• *Subscriber Increase:*

- 2.000.000 subscribers at the end of year 2003

• *MAIN PROJECTS:*

- GPRS
- MMS
- **PRE-PAID IN (WITH CAMEL PHASE 1 AND 2)**
- **COVERAGE 80%**

End of 2003



- 500 active base stations
- 80% covered area of Serbia
- 97% population is covered with the MTS 064 Network



MOBILNA TELEFONIJA SRBIJE

Thank you!

Doviđenja!