



**ITU-D Regional Development Forum
for the Americas Region:
“NGN and Broadband, Opportunities and Challenges”**

Session 4

Case Study on Broadband Access Network Planning

*Ignat Stanev
ITC, Bulgaria*

ITU-D Forum

Santo Domingo, Dominican Republic, 25 – 27 November 2009

Session 4-IS - 1

Content of the presentation :

- ❖ **Case studies and used planning tools**
- ❖ **Case study 1 – *Mali : Bamako urban and suburban (for Operator)***
- ❖ **Case study 2 – *Georgia : Tbilisi urban and suburban (for Administration)***
- ❖ **Case study 3 – *Tajikistan : Dushanbe urban and suburban (for Regulator)***
- ❖ **Case study 4 – *Moldova : Chisinau, typical town and rural area (for Administration)***

ITU-D Forum

Santo Domingo, Dominican Republic, 25 – 27 November 2009

Session 4-IS - 2

Case studies on broadband access network planning

- The case studies present the planning process that needs to be performed for planning of broadband access networks
- Planning process includes market definition, dimensioning and optimization of the access network elements, economic analysis and results.
- The case studies are from ITU projects on assisting of developing countries and are performed with professional NP tools, available through ITU partners

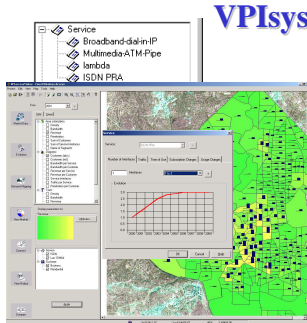
ITU-D Forum

Santo Domingo, Dominican Republic, 25 – 27 November 2009

Session 4-IS - 3

Case study tools

VPIsystems OnePlan Access



Market definition

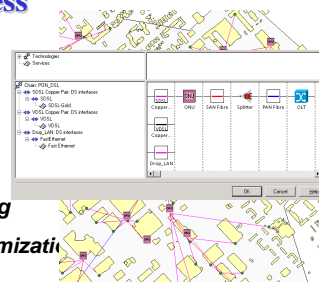
Evolution forecasting

Demand mapping

Technology modeling

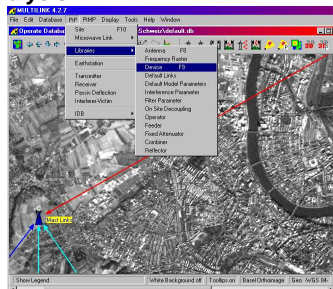
Network design optimization

Economy analysis



LStelcom MULTIlink

MULTIlink is a complete solution for fast microwave link engineering and designing of PMP/WLL/LMDS networks.

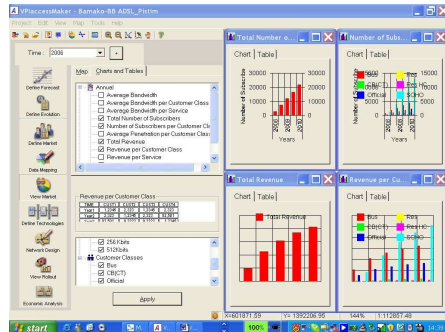


ITU-D Forum

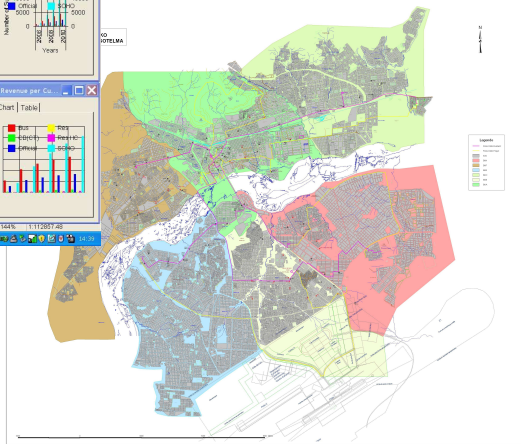
Santo Domingo, Dominican Republic, 25 – 27 November 2009

Session 4-IS - 4

Case study Bamako – urban and suburban area :



Customer market and revenue



Wireline xDSL
and
WiMAX overlay

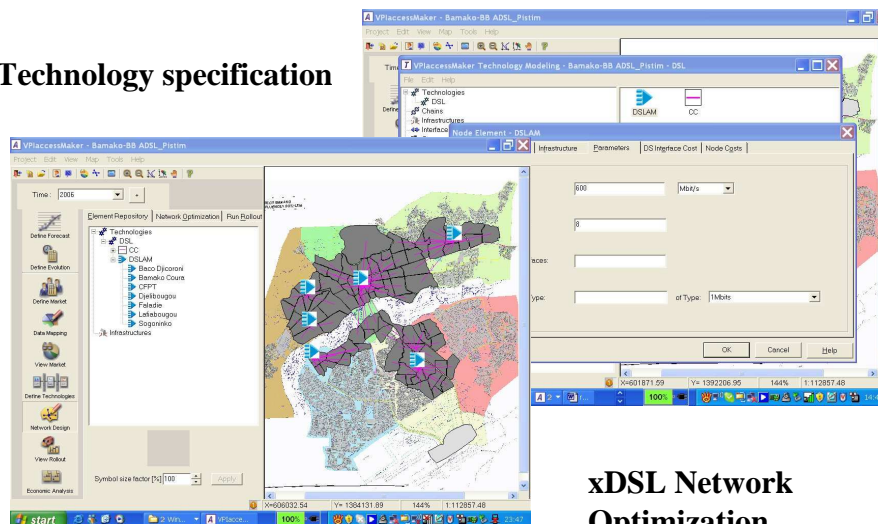
ITU-D Forum

Santo Domingo, Dominican Republic, 25 – 27 November 2009

Session 4-IS - 5

Case study Bamako - Planning xDSL :

Technology specification



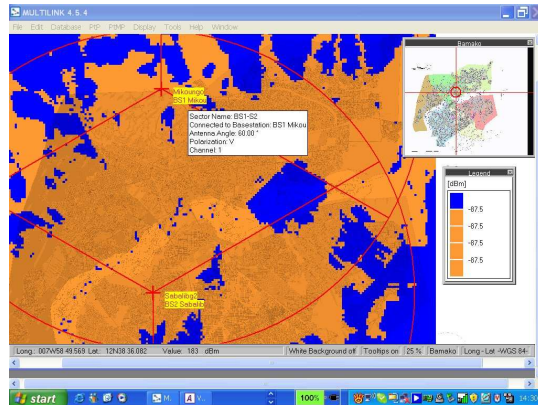
xDSL Network
Optimization

ITU-D Forum

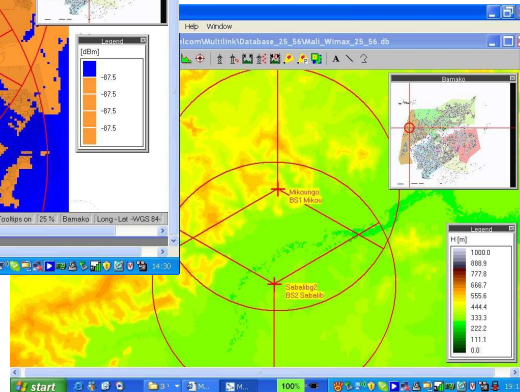
Santo Domingo, Dominican Republic, 25 – 27 November 2009

Session 4-IS - 6

Case study Bamako - Planning wireless :

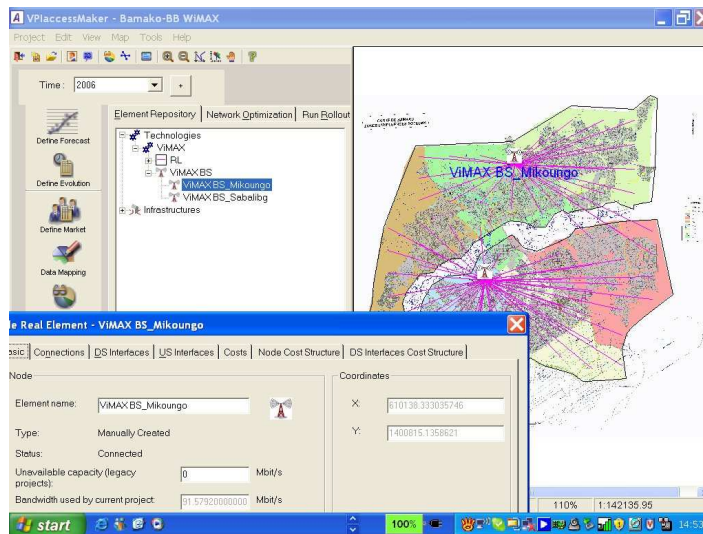


BS sites location



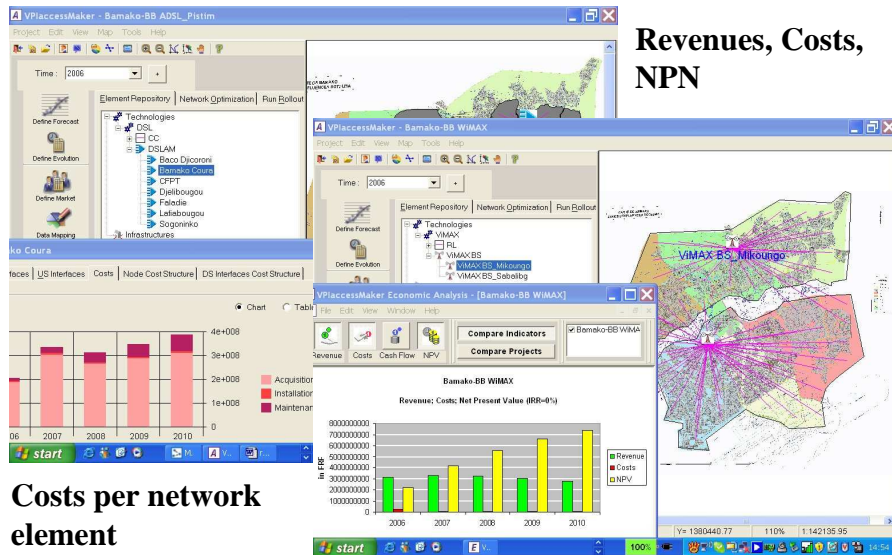
BS coverage calculations

Case study Bamako – Wireless access network :



WIMAX overlay network

Case study Bamako - Economic Analysis :



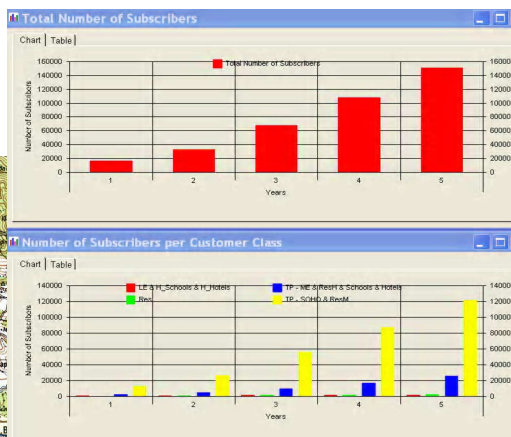
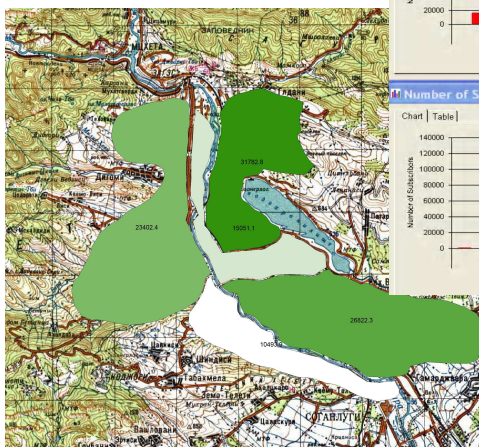
ITU-D Forum

Santo Domingo, Dominican Republic, 25 – 27 November 2009

Session 4-IS - 9

Case study Tbilisi – urban area :

Tbilisi city (5 districts)
Market study



4 customer classes

Forecast for 5 years

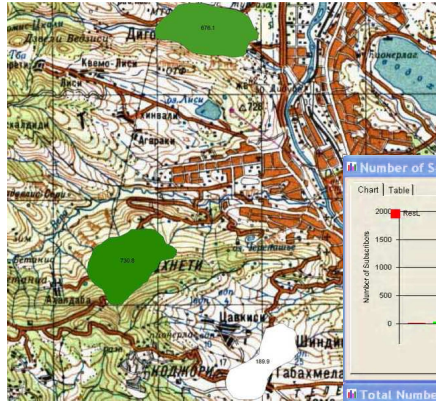
ITU-D Forum

Santo Domingo, Dominican Republic, 25 – 27 November 2009

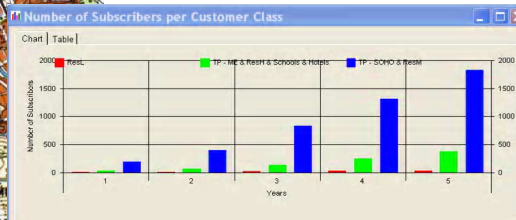
Session 4-IS - 10

Case study Tbilisi – suburban area :

Tbilisi suburban region (Tskneti, Dighomi, Tabaxmela, Chindisi)

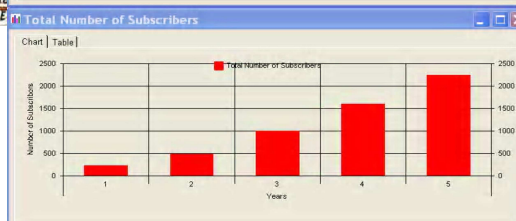


Market study



3 customer classes

Forecast for 2 years and 5 years

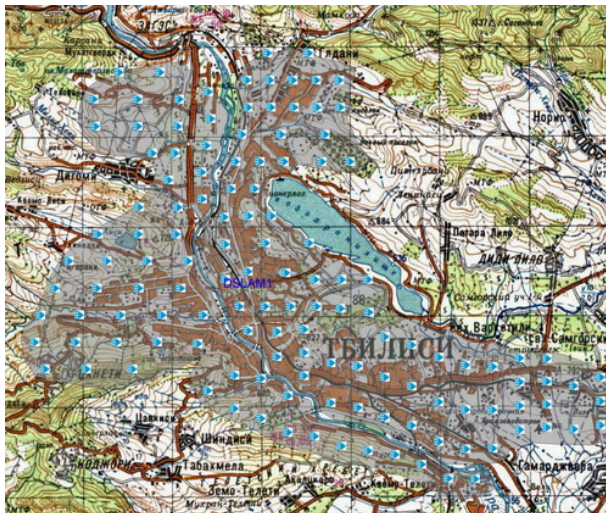


ITU-D Forum

Santo Domingo, Dominican Republic, 25 – 27 November 2009

Session 4-IS - 11

Case study Tbilisi – access network for urban area :



Tbilisi city
(5 districts)

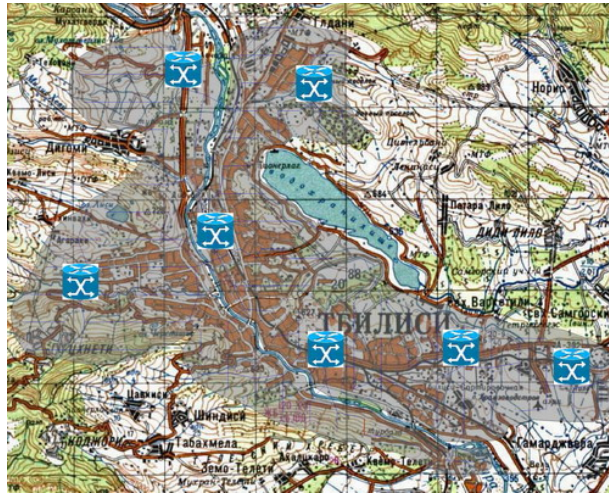
Technical solution
xDSL for VoIP, Fast
Internet, IPTV/Video
(134 DSLAMs)

ITU-D Forum

Santo Domingo, Dominican Republic, 25 – 27 November 2009

Session 4-IS - 12

Case study Tbilisi – access network for urban area :



Tbilisi city
(5 districts)

Technical
solution FTTO
(7 Agg. Nodes)

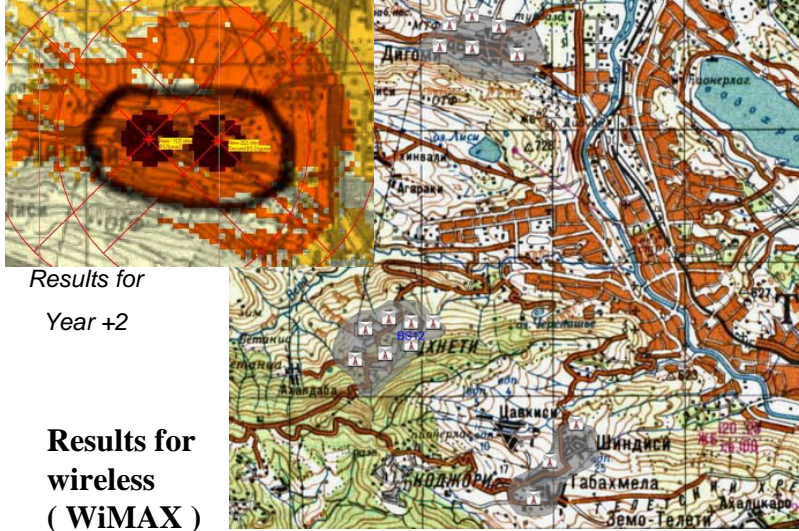
Case study Tbilisi suburbs - mountain rural area :

Wireline xDSL
vs.
Wireless WiMAX



Results for xDSL

Case study Tbilisi suburbs – Wireless access network :

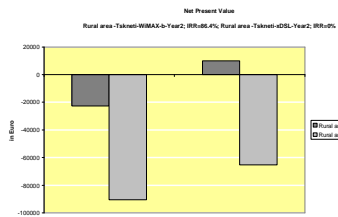


ITU-D Forum

Santo Domingo, Dominican Republic, 25 – 27 November 2009

Session 4-IS - 15

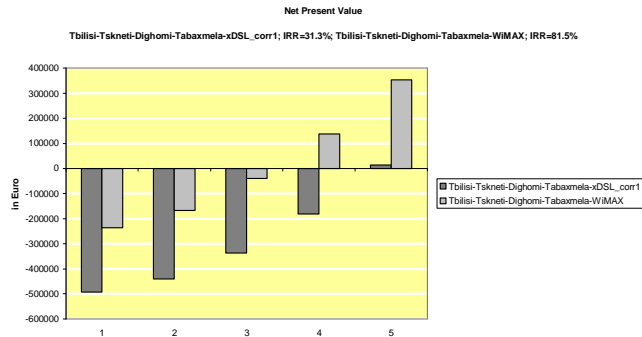
Case study Tbilisi - Economic Analysis :



Results for 2
year period

Revenues, Costs, NPN

Results for 5
year period

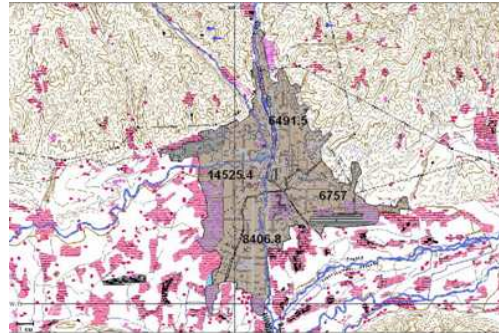


ITU-D Forum

Santo Domingo, Dominican Republic, 25 – 27 November 2009

Session 4-IS - 16

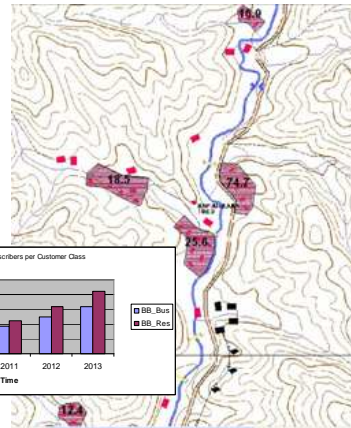
Case study Dushanbe – urban and suburban area :



Dushanbe urban (4 districts)



Dushanbe suburban (sample with 5 villages)

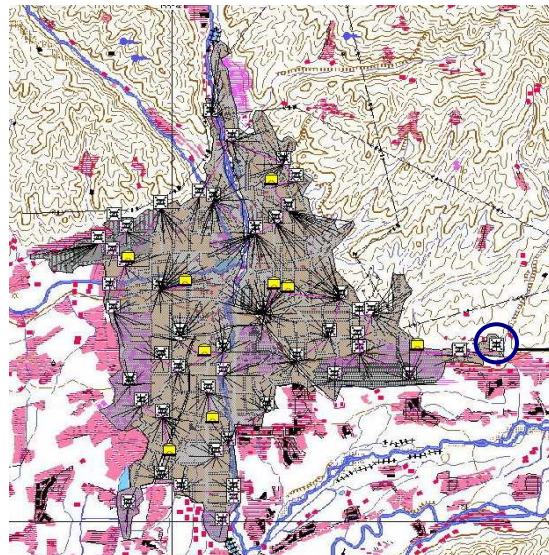


ITU-D Forum

Santo Domingo, Dominican Republic, 25 – 27 November 2009

Session 4-IS - 17

Case study Dushanbe – access network for urban area :



Dushanbe city (4 districts)

Wireline xDSL
and
WiMAX overlay

MSAN

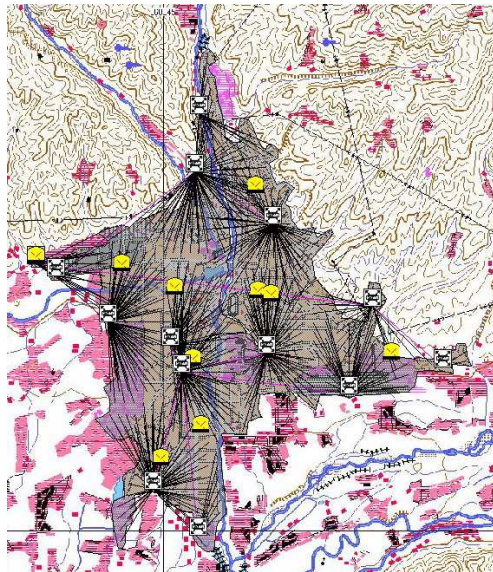
Technical solution xDSL
for VoIP, Data, Internet,
IPTV/Video
(49 MSANs and 9 EANs)

ITU-D Forum

Santo Domingo, Dominican Republic, 25 – 27 November 2009

Session 4-IS - 18

Case study Dushanbe – access network for urban area :

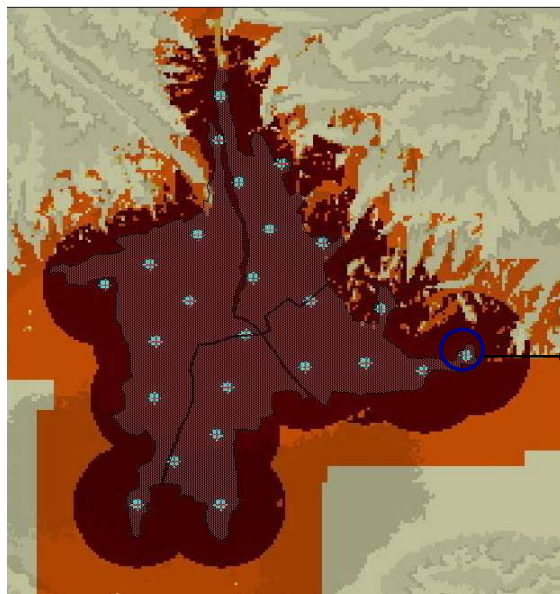


**Dushanbe city
(4 districts)**

**Wireline xDSL -
Initial solution
(year +1)**

**Technical solution
xDSL for VoIP, Data,
Internet, IPTV/Video
(14 MSANs)**

Case study Dushanbe – access network for urban area :



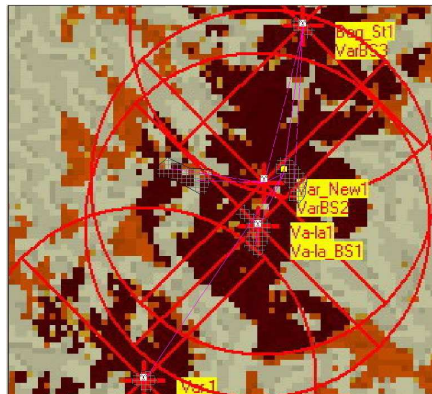
**Dushanbe city
(4 districts)**

WiMAX overlay

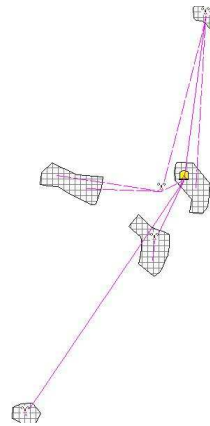
BS

**Technical solution
WiMAX for VoIP,
Data, Internet,
IPTV/Video
(25 BSs)**

Case study Dushanbe suburbs – Wireless access network :

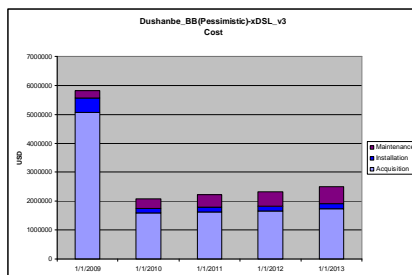


Dushanbe suburban
(sample with 5 villages)



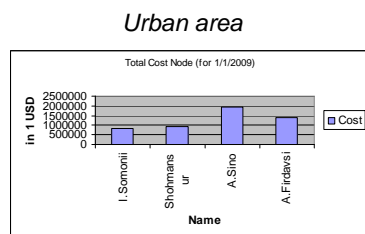
Results for wireless
(WiMAX)

Case study Dushanbe - Economic Results :

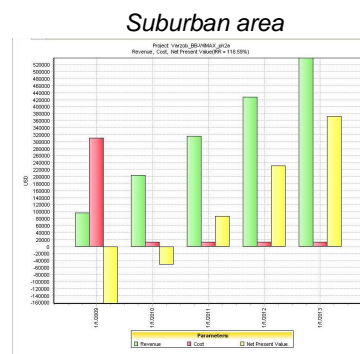


Results for 5
year period

Revenues, Costs, NPN

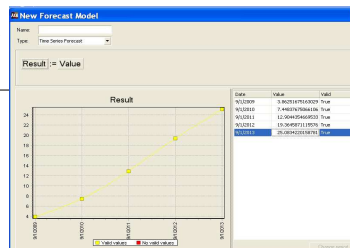
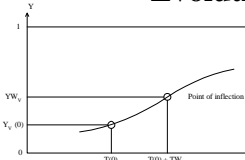
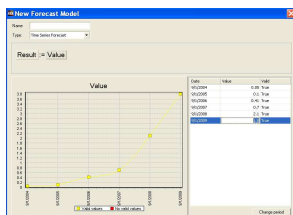


Results for initial network

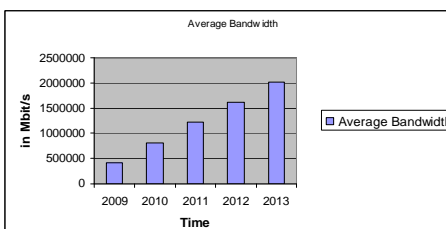
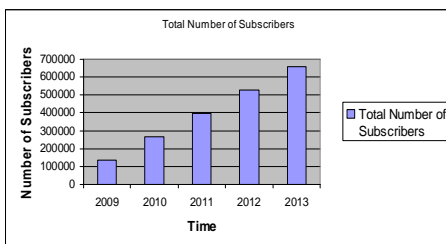


Case study Moldova BB market – Forecasting :

Evolution of BB customers Logistic model



Total number of BB customers



Estimated bandwidth requirements

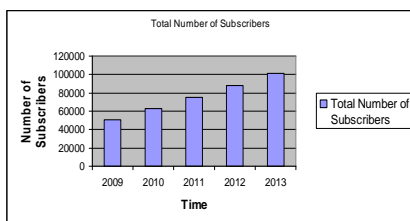
ITU-D Forum

Santo Domingo, Dominican Republic, 25 – 27 November 2009

Session 4-IS - 23

Case study Chisinau - BB market :

➤ Pessimistic scenario

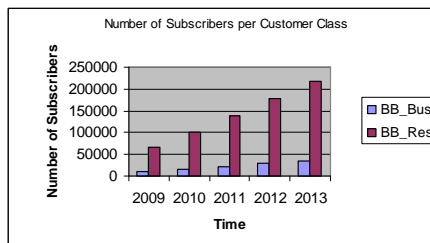


Estimated market segment

year	xDSL	WiMAX	FTTB	LAN+CATV
2009	67.4%	0.1%	17.4%	15.1%
2009	50916	76	13144	11407
2013	70%	2%	23%	5%
2013	101238	2893	33264	7231
Difference	50322	2817	20119	-4176

➤ Optimistic scenario

Estimated market segment				
year	xDSL	WiMAX	FTTB	LAN+CATV
2009	67.4%	0.1%	17.4%	15.1%
2009	50916	76	13144	11407
2013	70%	2%	23%	5%
2013	177167	5062	58212	12655
Difference	126251	4986	45064	1248

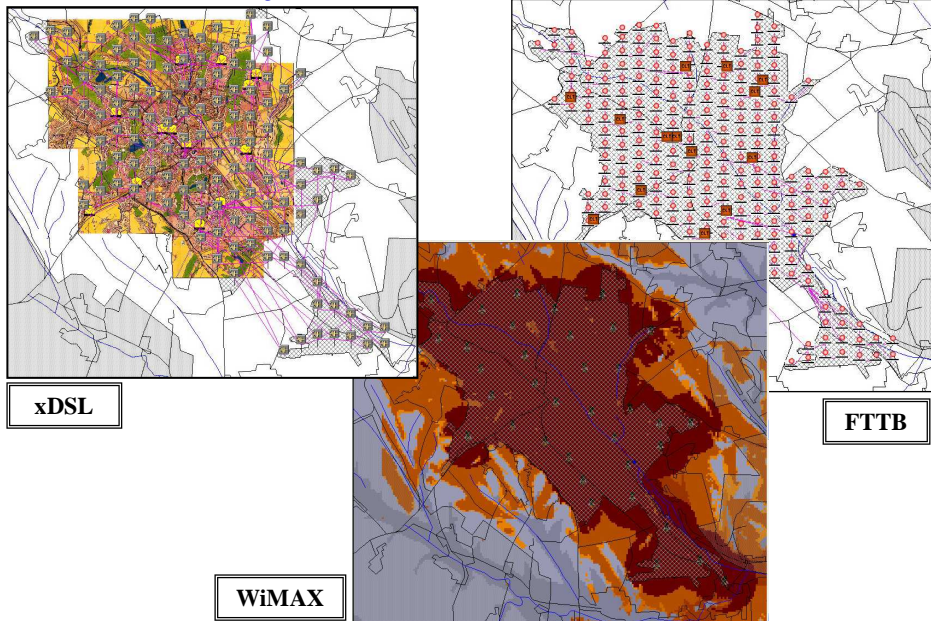


ITU-D Forum

Santo Domingo, Dominican Republic, 25 – 27 November 2009

Session 4-IS - 24

Case study Chisinau - BB access network :

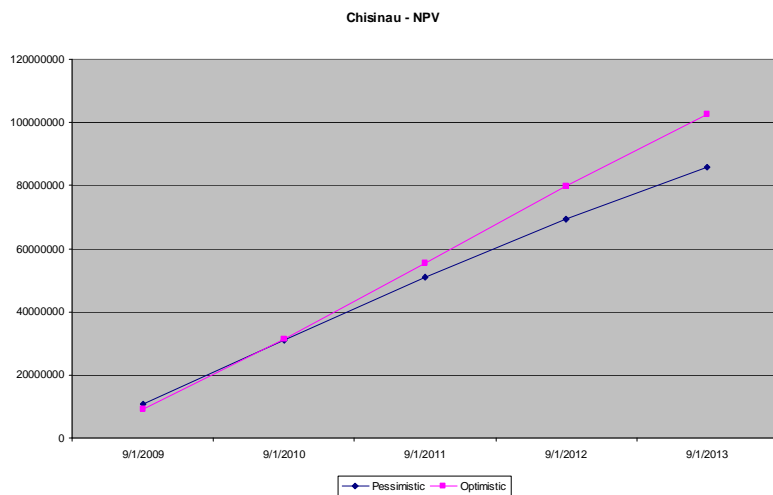


ITU-D Forum

Santo Domingo, Dominican Republic, 25 – 27 November 2009

Session 4-IS - 25

Case study Chisinau – economic results



Results for NPV : xDSL+ WiMAX + FTTB

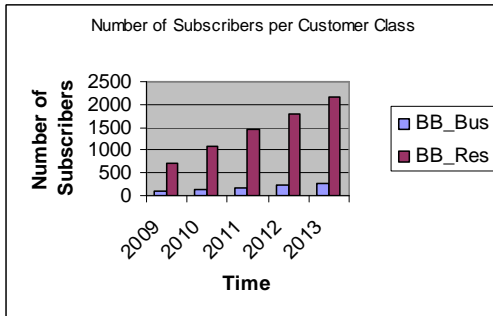
ITU-D Forum

Santo Domingo, Dominican Republic, 25 – 27 November 2009

Session 4-IS - 26

Case study for typical town (Nisporeny) - BB market :

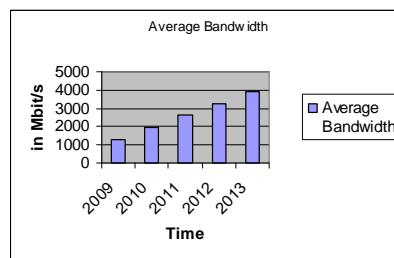
BB Customers



Market segment WiMAX –

- 2009 – 0%
- 2013 - 30%

Bandwidth requirements



Market segment xDSL –

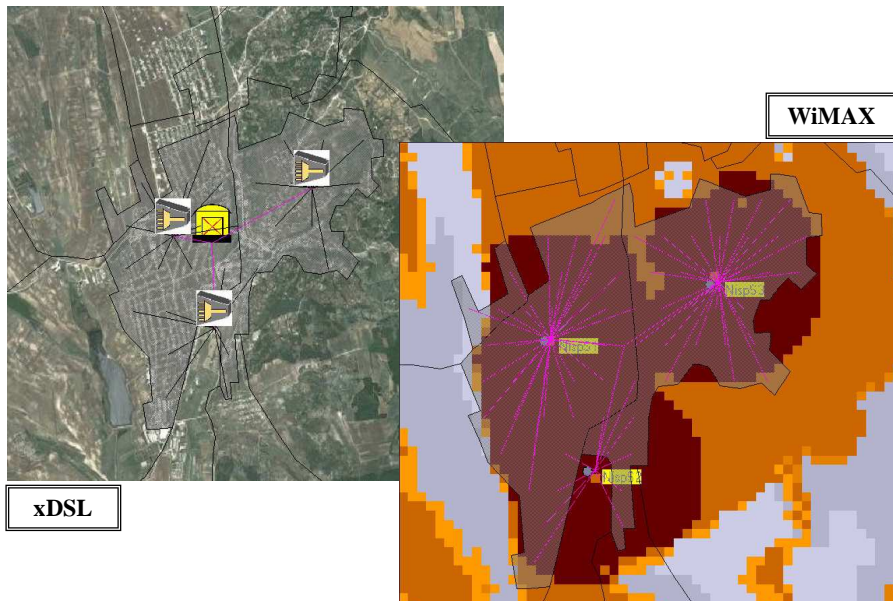
- 2009 – 100%
- 2013 - 70%

ITU-D Forum

Santo Domingo, Dominican Republic, 25 – 27 November 2009

Session 4-IS - 27

Case study Nisporeny - BB access network :

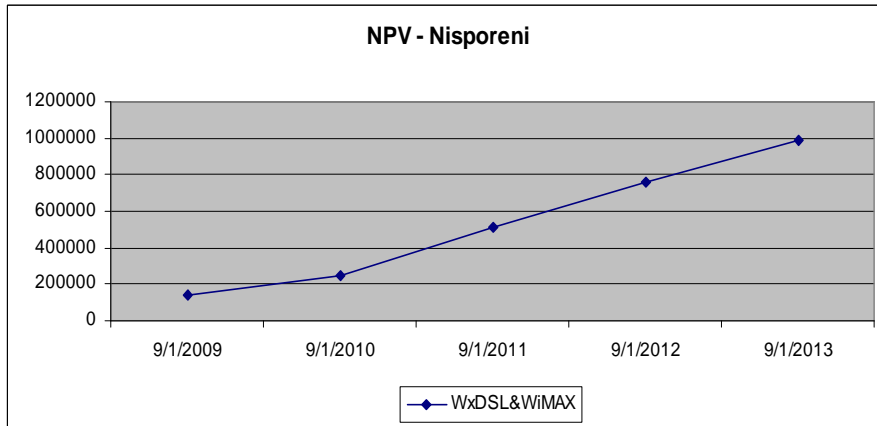


ITU-D Forum

Santo Domingo, Dominican Republic, 25 – 27 November 2009

Session 4-IS - 28

Case study Nisporeny – economic results



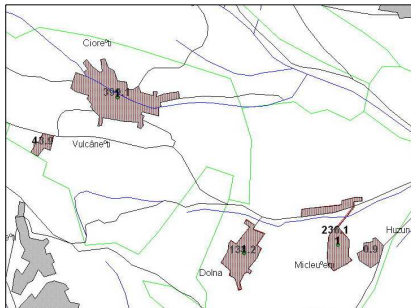
Results for NPV : xDSL + WiMAX

ITU-D Forum

Santo Domingo, Dominican Republic, 25 – 27 November 2009

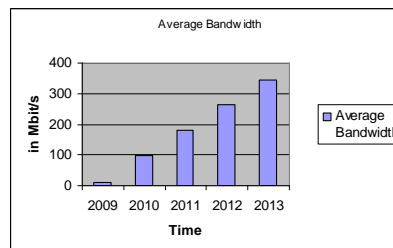
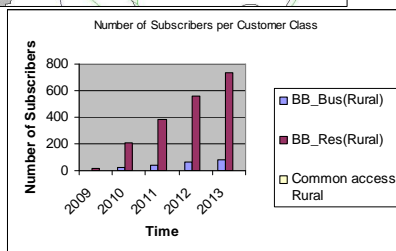
Session 4-IS - 29

Case study for typical rural area (Nisporeny rural) - BB market :



Village	Households	telephones	BB total	BB residential	BB business
Ciorești	1273	752	19	17	2
Vulcanesti	140				
Dolna	428	279			
Micleuseni	753	347			
Huzun	30				

BB Customers



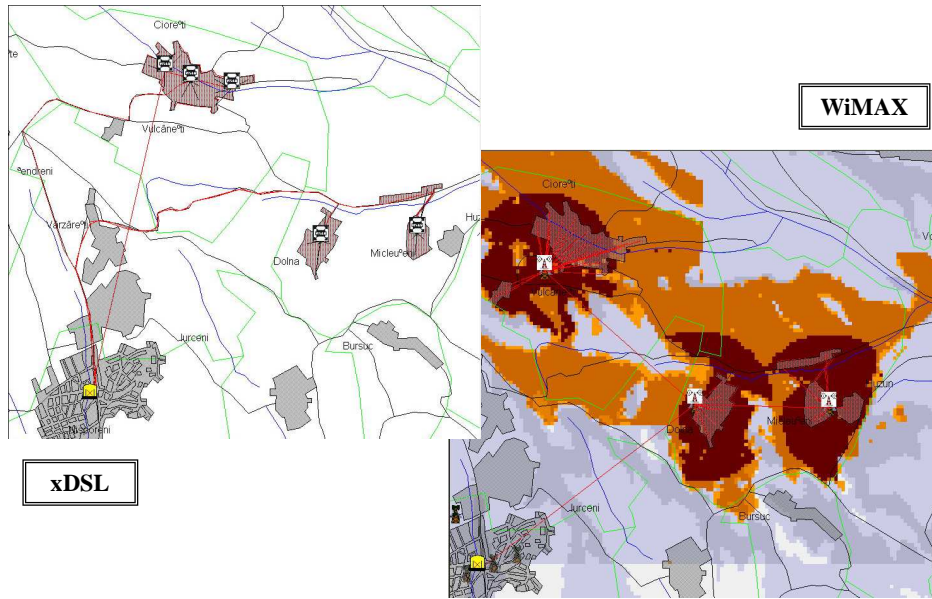
Bandwidth requirements

ITU-D Forum

Santo Domingo, Dominican Republic, 25 – 27 November 2009

Session 4-IS - 30

Case study rural - BB access network :



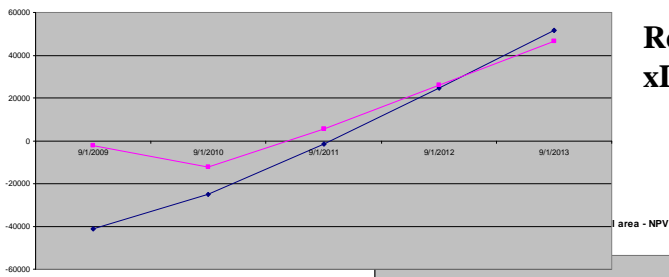
ITU-D Forum

Santo Domingo, Dominican Republic, 25 – 27 November 2009

Session 4-IS - 31

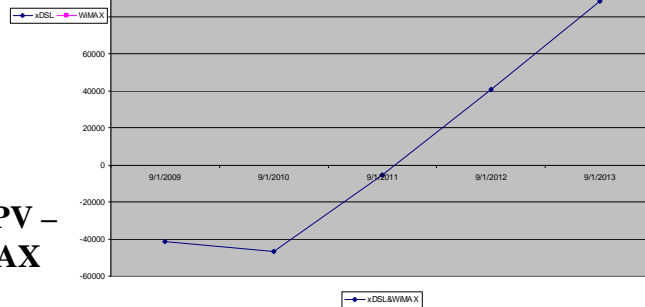
Case study rural – economic results

Nisporeni-Rural



Results for NPV –
xDSL & WiMAX

Results for NPV –
xDSL + WiMAX



ITU-D Forum

Santo Domingo, Dominican Republic, 25 – 27 November 2009

Session 4-IS - 32