



**ITU-D Regional Development Forum  
for the EUR and CIS Region:  
“NGN and Broadband, Opportunities and Challenges”**

## **Session 4**

# **Case Study on Broadband Access Network Planning**

*Ignat Stanev  
ITC, Bulgaria*

ITU-D Forum

Chisinau, Moldova, 24 – 26 August 2009

Session 4-IS - 1

### **Content of the presentation :**

- ❖ **Case studies and used planning tools**
- ❖ **Case study 1 – Bamako urban and suburban**
  - **xDSL for the urban area**
  - **WiMAX overlay for urban and suburban area**
- ❖ **Case study 2 – Tbilisi urban and suburban**
  - **xDSL and FTTO for the urban area**
  - **WiMAX for the suburban area**
- ❖ **Case study 3 – Dushanbe urban and suburban**
  - **xDSL and WiMAX for the urban area**
  - **WiMAX for the suburban area**

ITU-D Forum

Chisinau, Moldova, 24 – 26 August 2009

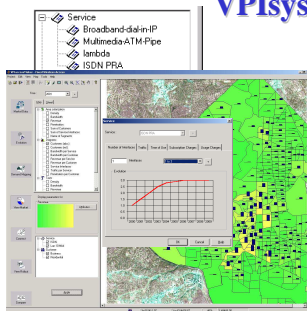
Session 4-IS - 2

## Case studies on broadband access network planning

- The case studies present the planning process that needs to be performed for planning of broadband access networks
- Planning process includes market definition, dimensioning and optimization of the access network elements, economic analysis and results.
- The case studies are from ITU projects on assisting of developing countries and are performed with professional NP tools, available through ITU partners

## Case study tools

### VPIsystems OnePlan Access



*Market definition*

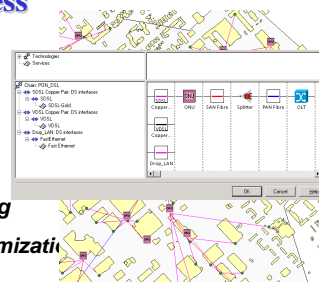
*Evolution forecasting*

*Demand mapping*

*Technology modeling*

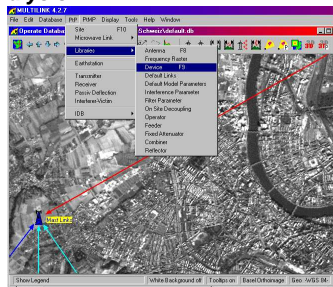
*Network design optimization*

*Economy analysis*

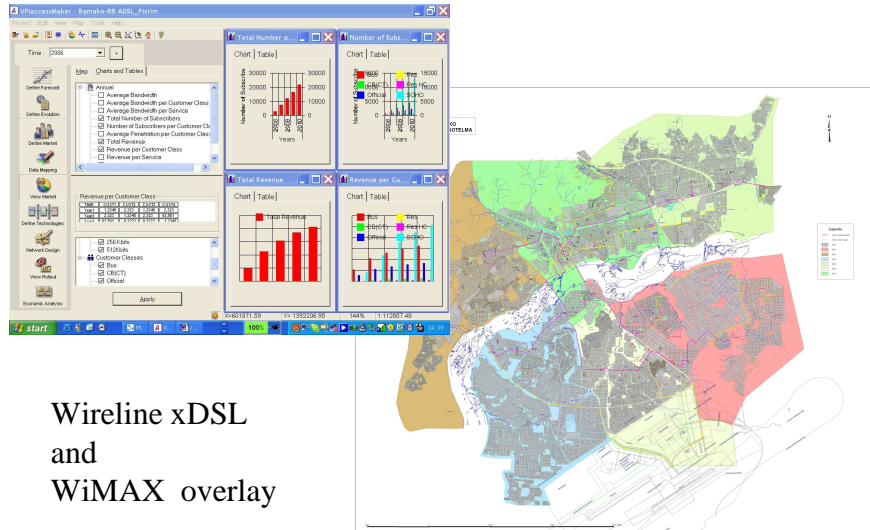


### LStelcom MULTIlink

*MULTIlink is a complete solution for fast microwave link engineering and designing of PMP/WLL/LMDS networks.*



## Case study Bamako – urban and suburban area :



Wireline xDSL  
and  
WiMAX overlay

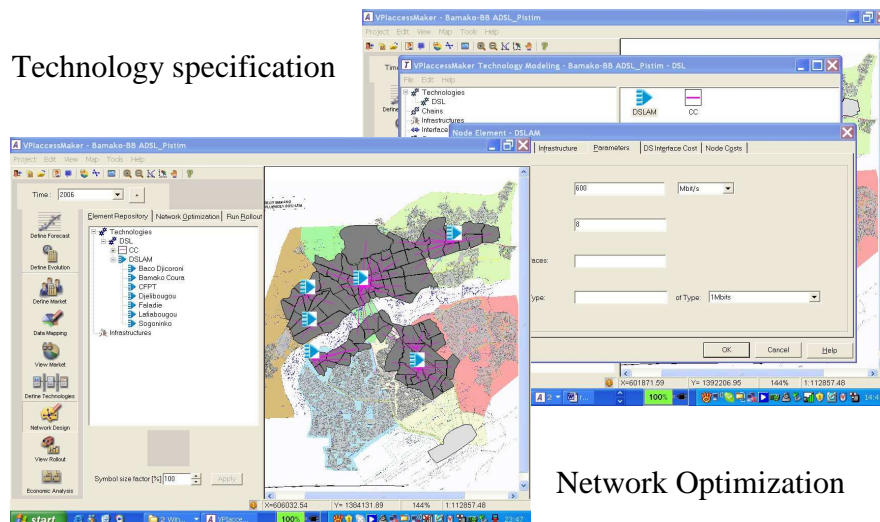
ITU-D Forum

Chisinau, Moldova, 24 – 26 August 2009

Session 4-IS - 5

## Case study Bamako - Planning xDSL :

Technology specification



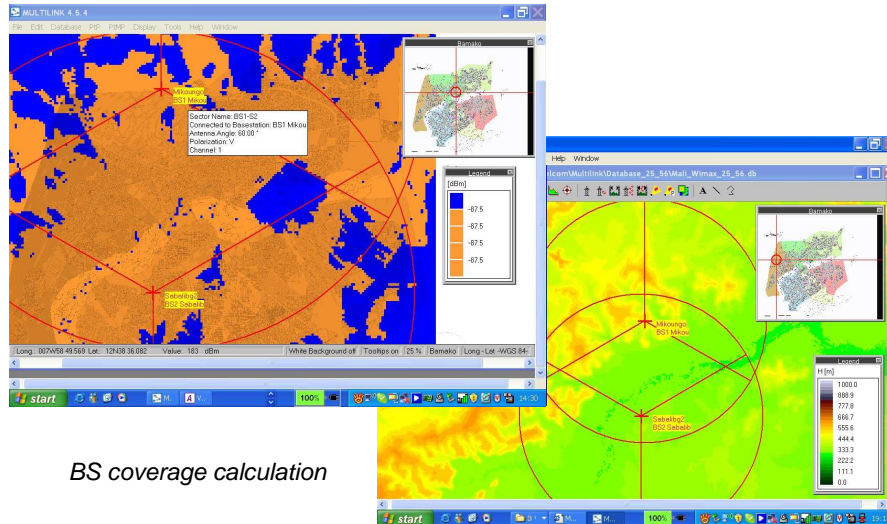
Network Optimization

ITU-D Forum

Chisinau, Moldova, 24 – 26 August 2009

Session 4-IS - 6

## Case study Bamako - Planning wireless :



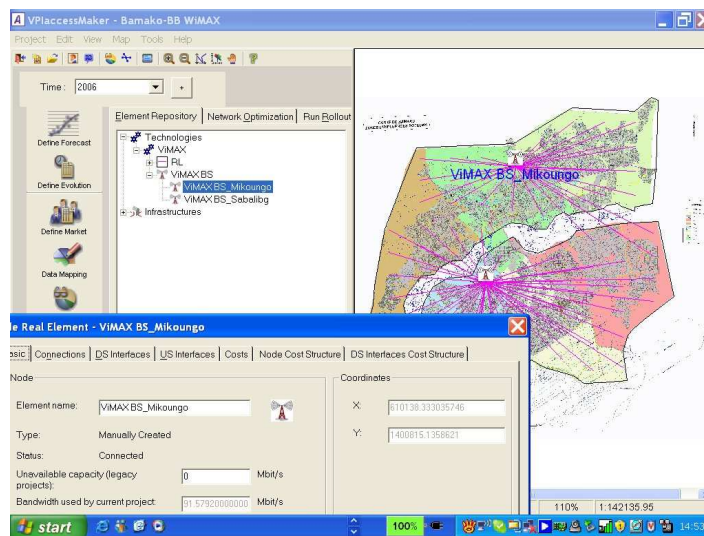
BS coverage calculation

ITU-D Forum

Chisinau, Moldova, 24 – 26 August 2009

Session 4-IS - 7

## Case study Bamako – Wireless access network :

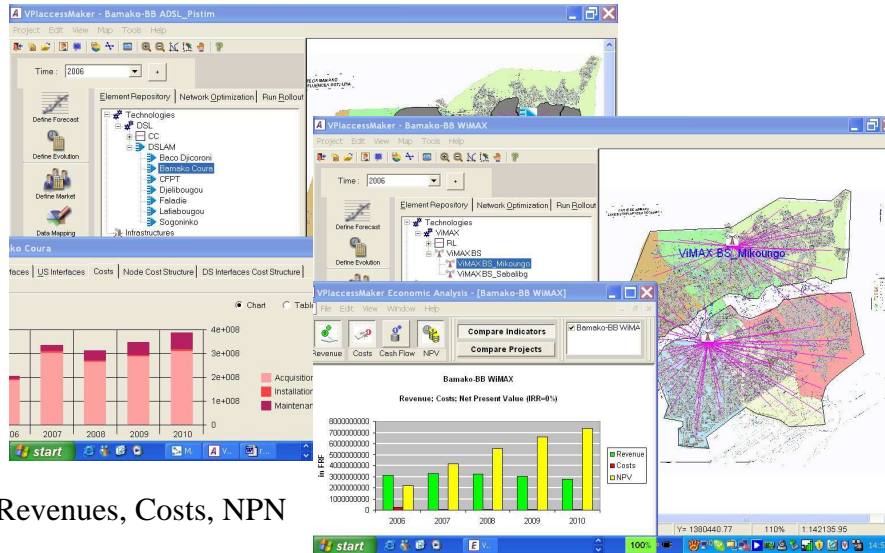


ITU-D Forum

Chisinau, Moldova, 24 – 26 August 2009

Session 4-IS - 8

## Case study Bamako - Economic Analysis :



Revenues, Costs, NPN

ITU-D Forum

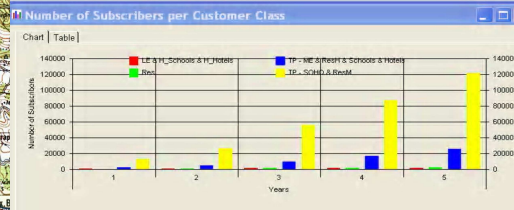
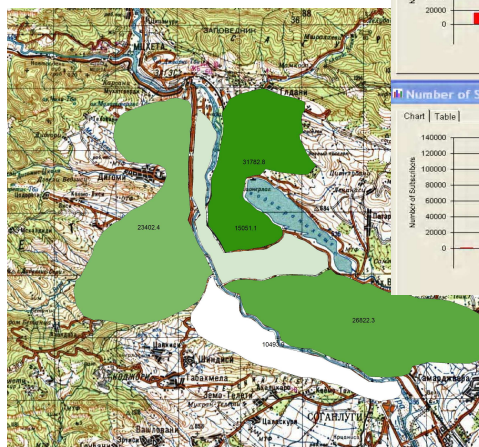
Chisinau, Moldova, 24 – 26 August 2009

Session 4-IS - 9

## Case study Tbilisi – urban area :

➤ Tbilisi city (5 districts)

➤ Market



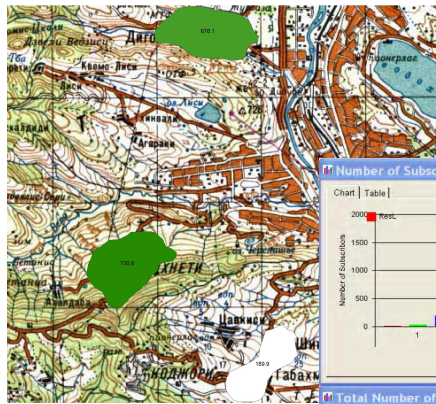
➤ 4 customer classes  
➤ Forecast for 5 years

ITU-D Forum

Chisinau, Moldova, 24 – 26 August 2009

Session 4-IS - 10

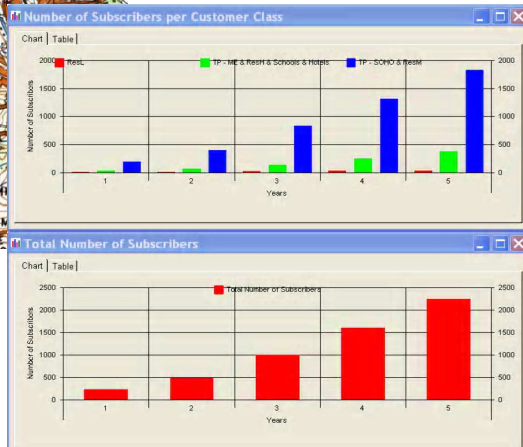
## Case study Tbilisi – suburban area :



- Tbilisi suburban region (Tskneti, Dighomi, Tabaxmela, Chindisi )

- 3 customer classes

- Forecast for 2 years and 5 year

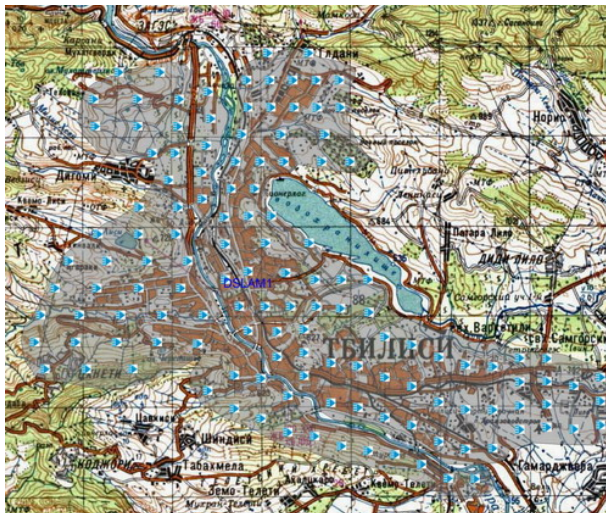


ITU-D Forum

Chisinau, Moldova, 24 – 26 August 2009

Session 4-IS - 11

## Case study Tbilisi – access network for urban area :



- Tbilisi city (5 districts)

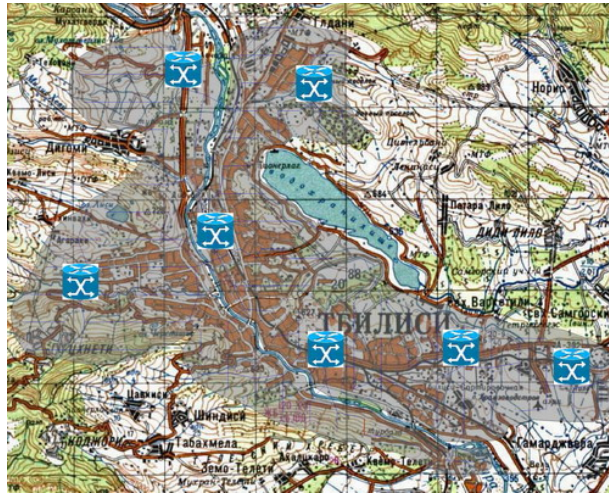
- technical solution xDSL for VoIP, Fast Internet, IPTV/Video ( 134 DSLAMs )

ITU-D Forum

Chisinau, Moldova, 24 – 26 August 2009

Session 4-IS - 12

## Case study Tbilisi – access network for urban area :



➤ Tbilisi city  
(5 districts)

➤ technical  
solution FTTO  
(7 Agg. Nodes)

ITU-D Forum

Chisinau, Moldova, 24 – 26 August 2009

Session 4-IS - 13

## Case study Tbilisi suburbs - mountain rural area :

Wireline xDSL  
vs.  
Wireless WiMAX



Results for xDSL

ITU-D Forum

Chisinau, Moldova, 24 – 26 August 2009

Session 4-IS - 14

## Case study Tbilisi suburbs – Wireless access network :

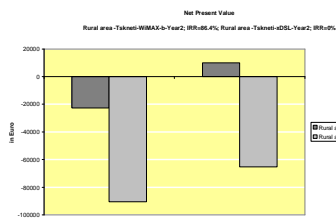


ITU-D Forum

Chisinau, Moldova, 24 – 26 August 2009

Session 4-IS - 15

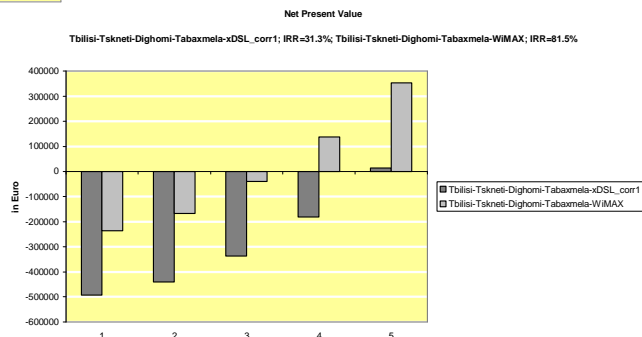
## Case study Tbilisi - Economic Analysis :



Results for 2  
year period

Revenues, Costs, NPN

Results for 5  
year period



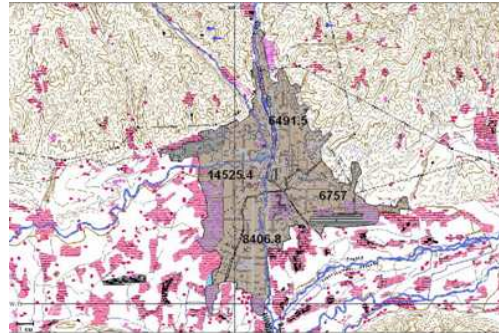
ITU-D Forum

Chisinau, Moldova, 24 – 26 August 2009

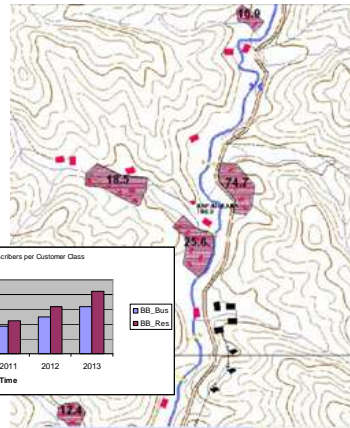
Session 4-IS - 16



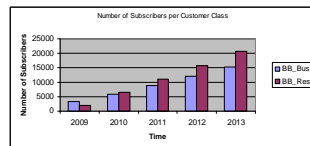
## Case study Dushanbe – urban and suburban area :



➤ Dushanbe suburban (sample with 5 villages)



➤ Dushanbe urban (4 districts)

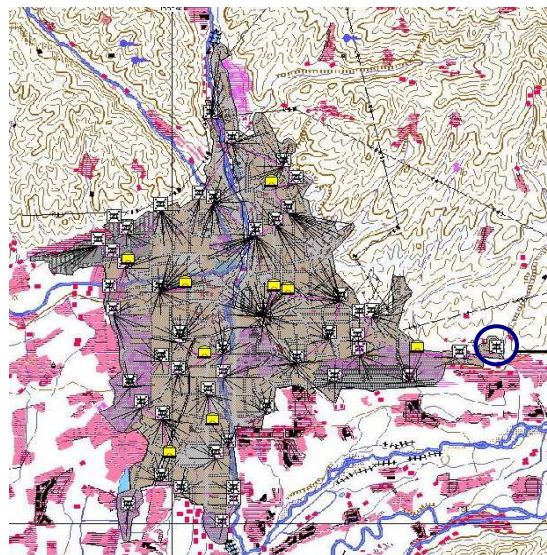


ITU-D Forum

Chisinau, Moldova, 24 – 26 August 2009

Session 4-IS - 17

## Case study Dushanbe – access network for urban area :



➤ Dushanbe city (4 districts)

Wireline xDSL and WiMAX overlay

MSAN

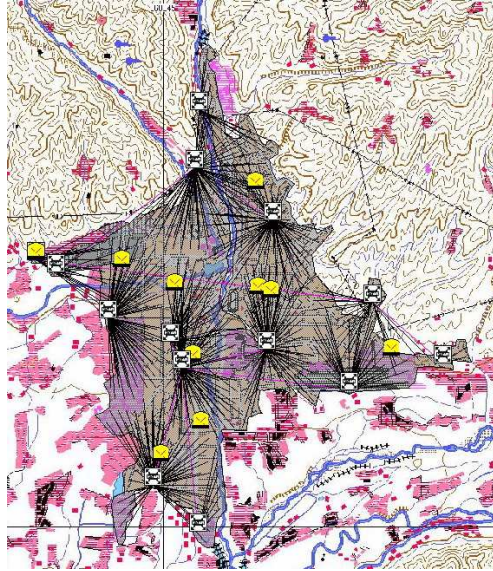
➤ technical solution xDSL for VoIP, Data, Internet, IPTV/Video (49 MSANs and 9 EANs)

ITU-D Forum

Chisinau, Moldova, 24 – 26 August 2009

Session 4-IS - 18

## Case study Dushanbe – access network for urban area :



➤ Dushanbe city  
(4 districts)

Wireline xDSL -  
Initial solution  
(year +1)

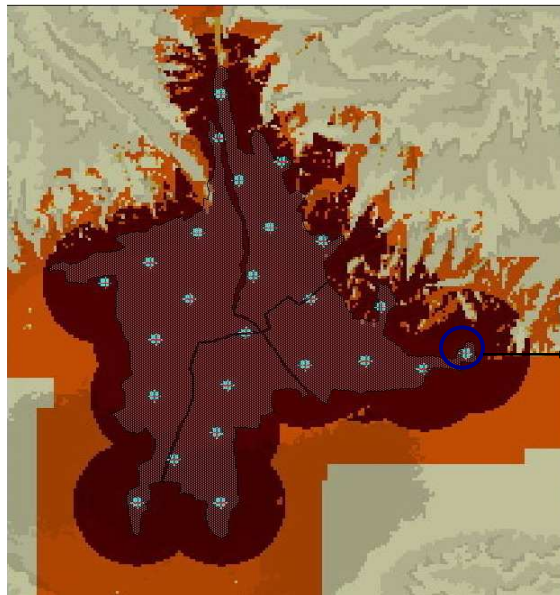
➤ technical solution  
xDSL for VoIP, Data,  
Internet, IPTV/Video  
( 14 MSANs)

ITU-D Forum

Chisinau, Moldova, 24 – 26 August 2009

Session 4-IS - 19

## Case study Dushanbe – access network for urban area :



➤ Dushanbe city  
(4 districts)

WiMAX overlay

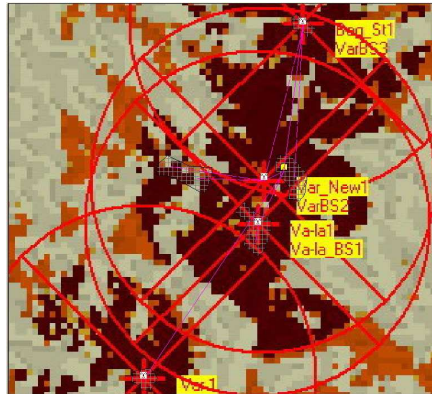
➤ technical solution  
WiMAX for VoIP,  
Data, Internet,  
IPTV/Video  
( 25 BSs)

ITU-D Forum

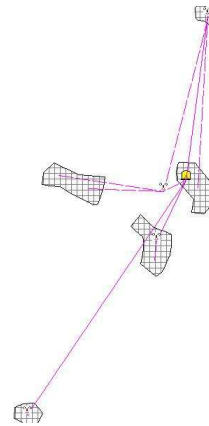
Chisinau, Moldova, 24 – 26 August 2009

Session 4-IS - 20

## Case study Dushanbe suburbs – Wireless access network :

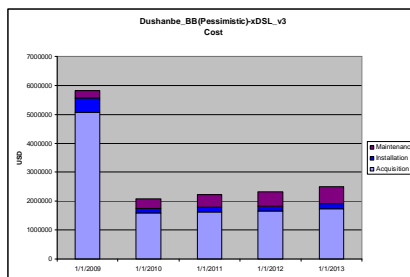


➤ Dushanbe suburban  
(sample with 5 villages)



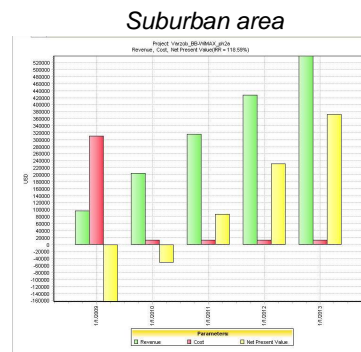
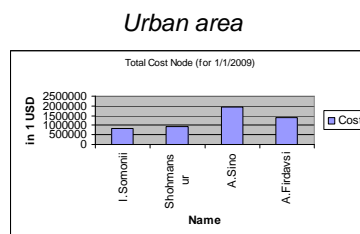
Results for wireless  
( WiMAX )

## Case study Dushanbe - Economic Results :



Results for 5  
year period

Revenues, Costs, NPN



Results for initial network