



Regional Seminar for the Africa Region on Conformance and Interoperability Testing Centre(s)

4th - 6th July 2011 – La Palm Royal Beach Hotel
Accra, Ghana

Building Capacity for Regional Conformance and Interoperability Programs

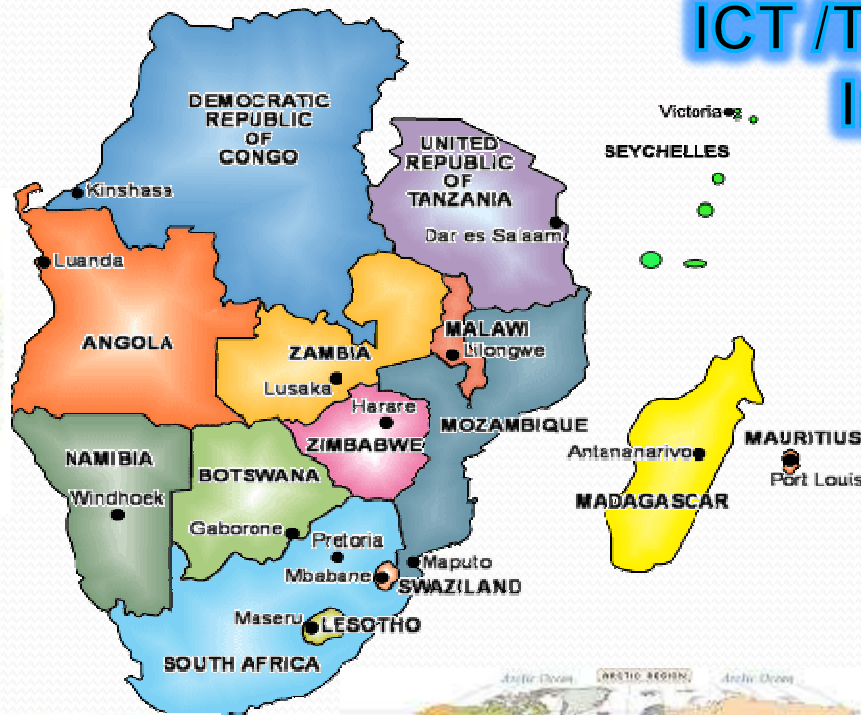
Jacob Munodawafa – Executive Secretary/CEO

SADC Regional Economic Community

ICT /Telecoms/Postal Institutions



1980



Southern Africa Telecommunications Association



6,928,600,000

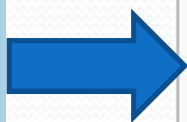


Southern Africa Telecommunications Association

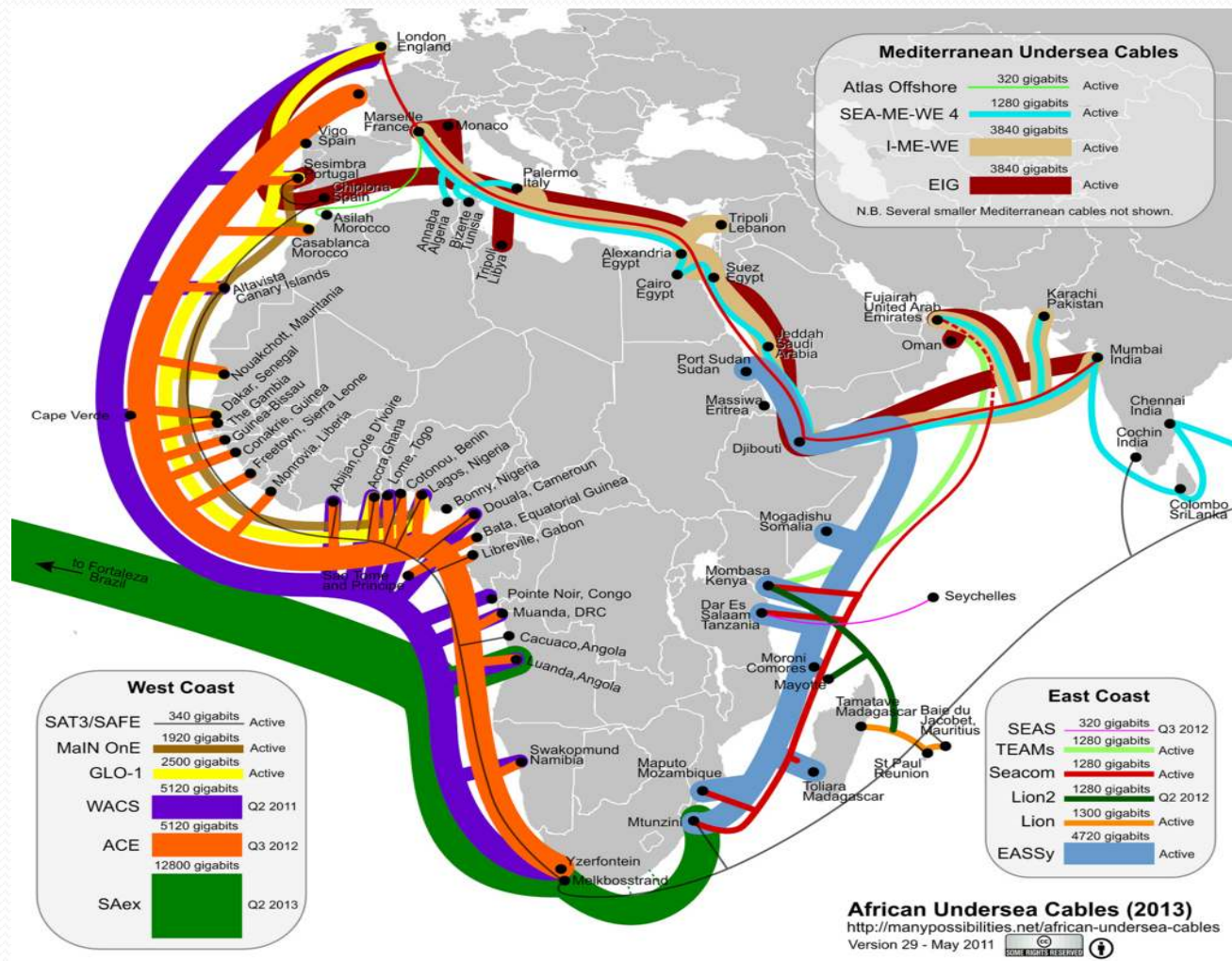
5th July 2011

Statistics - African Economic Community

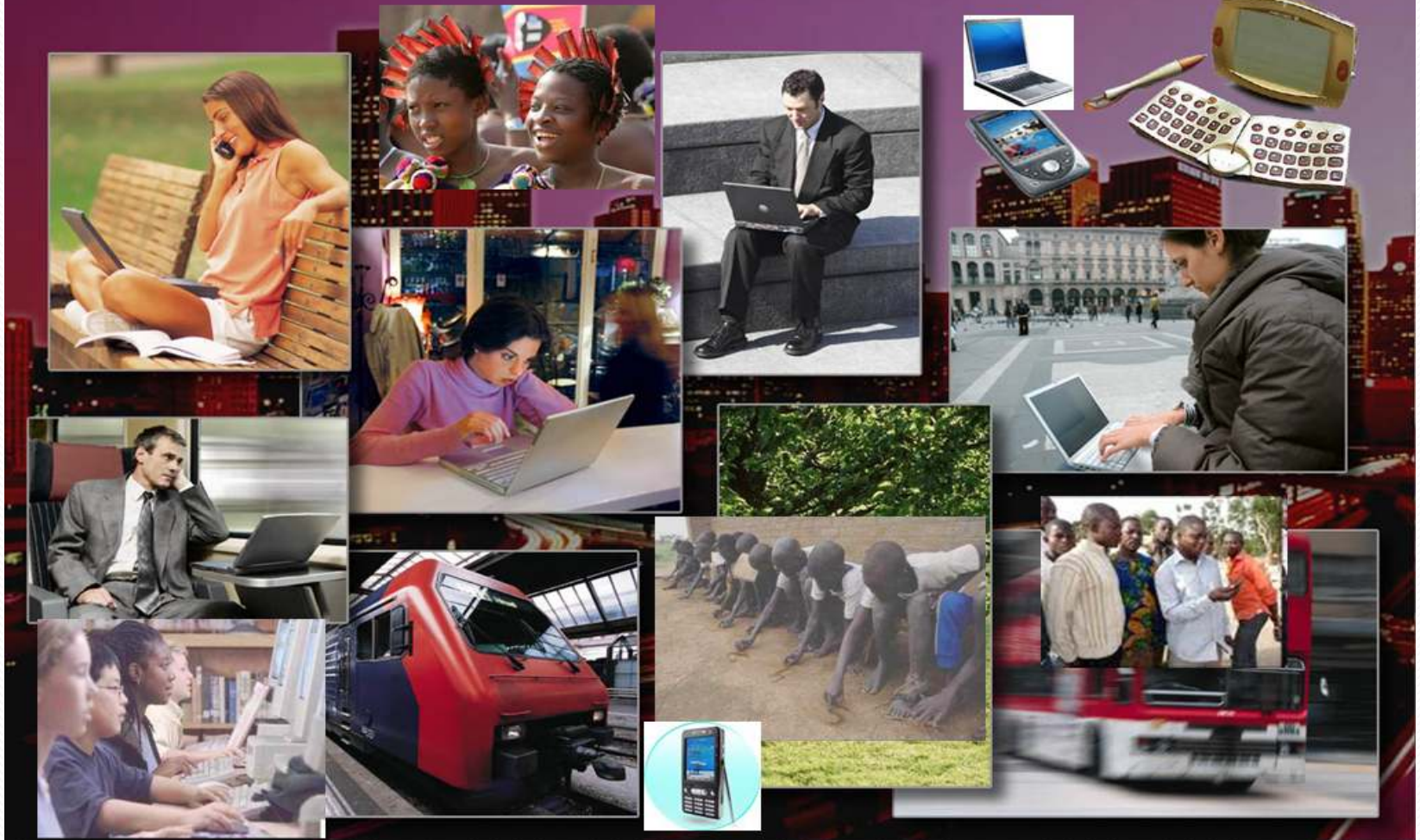
African Economic Community					
Pillars regional blocs (REC) ¹	Area (km ²)	Population	GDP (PPP) (\$US)		Member states
			in millions	per capita	
AEC	29,910,442	853,520,010	2,053,706	2,406	53
ECOWAS	5,112,903	251,646,263	342,519	1,361	15
ECCAS	6,667,421	121,245,958	175,928	1,451	11
SADC	9,882,959	233,944,179	737,335	3,152	15
EAC	1,817,945	124,858,568	104,239	1,065	5
COMESA	12,873,957	406,102,471	735,599	1,811	20
IGAD	5,233,604	187,969,775	225,049	1,197	7
Other African blocs	Area (km ²)	Population	GDP (PPP) (\$US)		Member states
			in millions	per capita	
CEMAC ²	3,020,142	34,970,529	85,136	2,435	6
SACU ²	2,693,418	51,055,878	541,433	10,605	5
UEMOA ²	3,505,375	80,865,222	101,640	1,257	8
UMA ³	5,782,140	84,185,073	491,276	5,836	5
GAFTA ⁴	5,876,960	166,259,603	635,450	3,822	5



Africa - Brightly Lit Continent



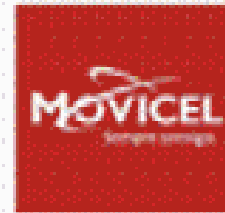
SATA Theme 2011/2012 → Universality and Affordable Access



Who are we, what we do and how we do it?



TELECOMUNICAÇÕES DE MOÇAMBIQUE



Who are we, what we do and how we do it? (cont)



Collaboration

Regional and Global Collaboration and Partnerships

SADC , CRASA, SAPOA, ITU, RASCOM, AfDB, CTO, FIINA, KTOA

■ – Run joint programmes and collaborate on implementation of projects and initiatives

Signed MoUs -

Established collaborative partnership committed to facilitate cooperative initiatives in the area of ICT through joint research, workshops and seminars

Established framework of cooperation to promote programs & activities related to telecom issues & identify new areas of co-operation within the realm of ICT to satisfying the diverse needs of the telecom industry



COMMONWEALTH
TELECOMMUNICATIONS
ORGANISATION



ICT Services

Everywhere

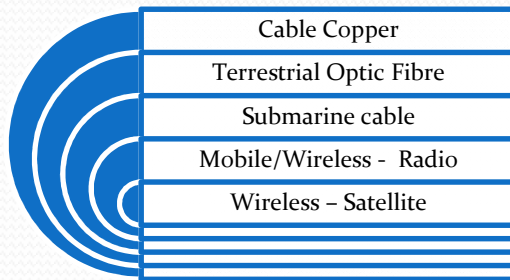


Applications Driven by:

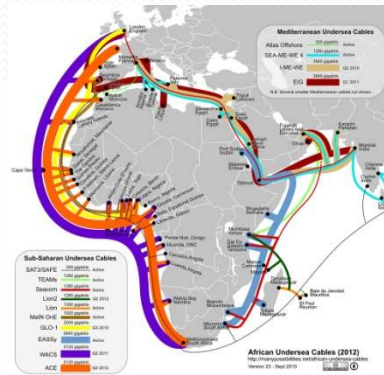
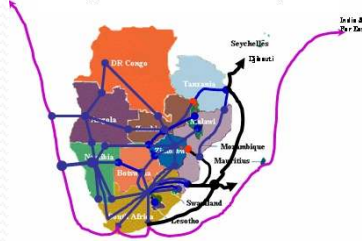


- Voice
- Data
- Internet

Infrastructure is critical for regional development



SRIL - Regional/International Connectivity



Broadband Infrastructure Development

Conformity Assessment

- ❑ Conformity assessment is a procedure adopted to demonstrate that specified requirements relating to a product, process, system, person or body are fulfilled.
- ❑ The procedure includes various steps, the most important being: testing, certification and the supplier's declaration.

Source: ITU



Interoperability

1. Interoperability is the ability of two or more systems or applications or network management products and services from different suppliers or vendors to exchange information and mutually to make use of it.
2. Tests are performed in an Industry Interoperability Initiative where various manufacturers cross-connect products to identify interoperability performance.

Source: ITU



Type Approval and Testing facilities – by regulators /Operators

- ❑ Type approval test is conducted on samples that represent the whole production for the purpose of determining conformity.
- ❑ Periodic type approval tests are intended to verify, as part of factory surveillance, that conformity is maintained over time.
- ❑ Tests can be performed in the same premises where products are manufactured (1st party), in the customer premises (2nd party) or in an external and independent laboratory (3rd party).



http://www.sata.org.za

Factors Contributing to Technical Competence and Capacity

- Qualifications, training and experience of the staff
- Correct equipment – properly calibrated and maintained
- Adequate quality assurance procedures
- Proper sampling practices
- Appropriate and valid testing procedures and methods
- Traceability of measurements to National/international standards
- Accurate recording and reporting procedures and
- Suitable testing/inspection facilities



Importance of Conformity and Interoperability

Key for sustainable development

- Understanding and participation by the regulators, operators and manufacturers is must for a win-win situation
- Unless pro-actively addressed can become a serious industry hurdle.
- Real developmental opportunities exist in the light of strong dynamics in the industry for sustainably produced technology and products



Capacity Issues

Challenges faced:

- Limited allocated resources to support capacity building and development
- Qualifications and Experienced - people, limited Msc /PhD programmes for the industry
- International exposure and best practices
- Participation and leading in international activities
- Ownership of the programs



Activities on Capacity Building and Testing Centre (s)

- Collaborating and working very closely with the ITU on Conformity and Interoperability Programs
- As a SADC regional representative of the operators, we are fully involved in the program coordination
- ✓ **Looking forward to establishment of SADC Regional Testing Centre (s)**



Recommendations for Building Capacity

- Continuous Training on Standards and Technology Developments
- Postgraduate programs (Msc/PhD) in Telecommunications /ICT e.g through the ITU Centres of Excellence Programs and Distance /e - Learning
- Multi-Stakeholder approach to Conformity and Interoperability Programs





Thank you for your interest and attention