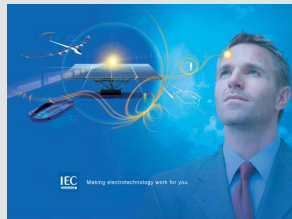


IECEE provides facilitation to the Global Trade

IECEE takes the Conformity Assessment further



Amaury Santos
IEC Latin America Regional Manager

Copyright © IEC, Geneva, Switzerland

CAB - Conformity Assessment

IECEE
System for Conformity
Testing and Certification
of Electrotechnical
Equipment and

IECEX
System for Certification
to Standards Relating to
Equipment for use in
Explosive Atmospheres

IECQ
Quality Assessment
System for Electronic
Components

CB Scheme
Mutual recognition of test results



CB-FCS Full Certification Scheme
Full certification, including QMS & Factory



ENERGY EFFICIENCY



Procedure to become IECEE Member



- **Membership of the IECEE is open to any country in which there is a Full or Associate Member National Committee of the IEC**
- **Membership of IECEE is also open to IEC Affiliates and non-IEC countries under certain conditions**



IECEE Member Bodies by Countries



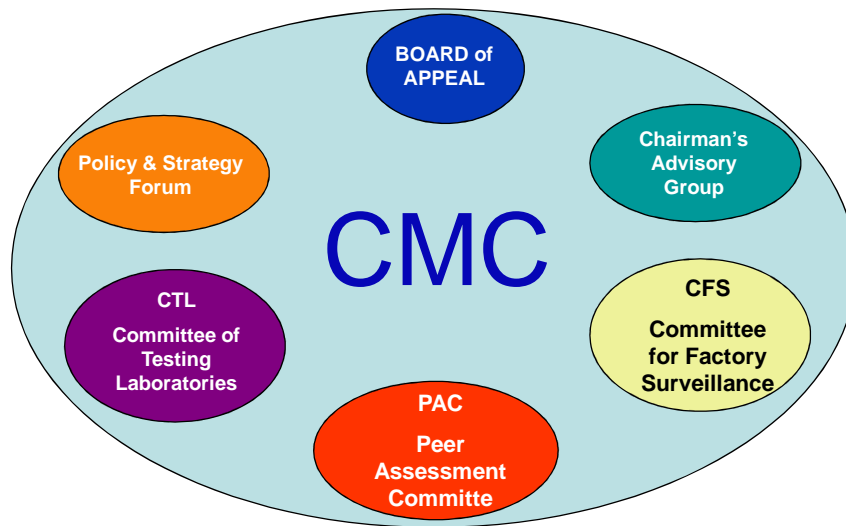
| | | | |
|------------|---------------|--------------------|----------------------|
| Argentina | Finland | Malaysia | Slovakia |
| Australia | France | Mexico | Slovenia |
| Austria | Germany | Netherlands | South Africa |
| Bahrain | Greece | New Zealand | Spain |
| Belarus | Hungary | Norway | Sweden |
| Belgium | India | Pakistan | Switzerland |
| Brazil | Indonesia | Poland | Thailand |
| Bulgaria | Ireland | Portugal | Turkey |
| Canada | Israel | Romania | Ukraine |
| China | Italy | Russian Federation | United Arab Emirates |
| Colombia | Japan | Saudi Arabia | United Kingdom |
| Croatia | Kenya | Serbia | United States |
| Czech Rep. | Korea Rep. of | Singapore | |
| Denmark | Libya | | |

53 Participating Countries

The Members of the IECEE System are:

- 53 Member Bodies - 1 per Country
- 74 Certification Bodies - 1 or more per Country
- 367 Testing Laboratories - 1 or more per Country
- 47 ACTLs
- 2282 Manufacturer's Testing Laboratories

| | MEMBER BODY | NCB(s) NATIONAL CERTIFICATION BODY | CBTL(s) TESTING LABORATORY | MANUFACTURER'S TESTING LABORATORIES |
|---------------------------|------------------------|------------------------------------|------------------------------------|--|
| Level 3 *** | Full Rights | Issuing and Recognizing | Associated with the NCB | Under the Responsibility of the NCB |
| Level 2 ** | Full Rights | Recognizing only | | |
| Level 1 * | Full Rights | | | |



In recognition of the need to facilitate international trade in electrotechnical equipment, and components primarily intended for use in homes, offices, workshops healthcare facilities and similar locations, for benefit of consumers, industries, authorities etc, and to provide convenience for manufacturers and other users of the services provided by various *National Certification Bodies (NCBs)*, two international Schemes are operated by the IECEE, known as the:

- **CB Scheme**
- **CB-FCS Full Certification Scheme**



IECEE Conformity Assessment Schemes



- The IECEE Schemes are based on the principle of mutual recognition (reciprocal acceptance) by its worldwide members of test results for obtaining certification or *approval* at national level.
- The IECEE Schemes in the last decade have naturally evolved and become « *de facto* » the most accepted proof of compliance by many Countries' Authorities and Regulators as the passport to entry their markets without further testing.



IECEE facilitates International Trade



The IECEE Schemes are intended to reduce obstacles to international trade which arise from having to meet different national certification or approval criteria.

Where national standards are not yet completely based on IEC standards, declared ***national differences*** are taken into account.

However, successful operation of the Scheme presupposes that national standards are reasonably harmonized with the corresponding IEC standards.

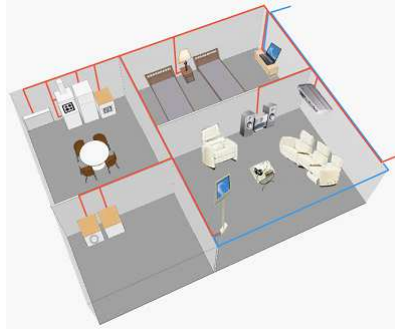


Electrical accessories
(TC 23)

Luminaires
(TC 34)

Electric cables
(TC 20)

Lamps and related
equipment (TC 34)



Safety, Performance, Sourcing
IECEE

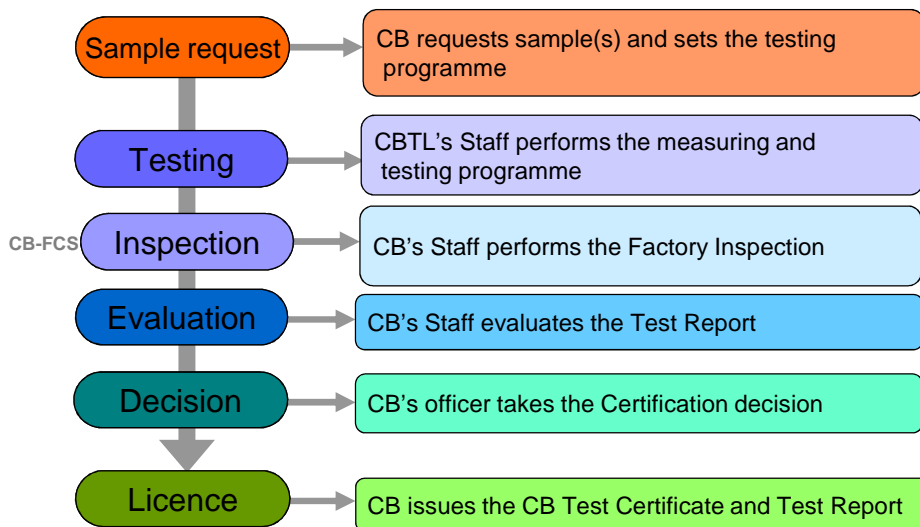
Information Technology
(TC 108)

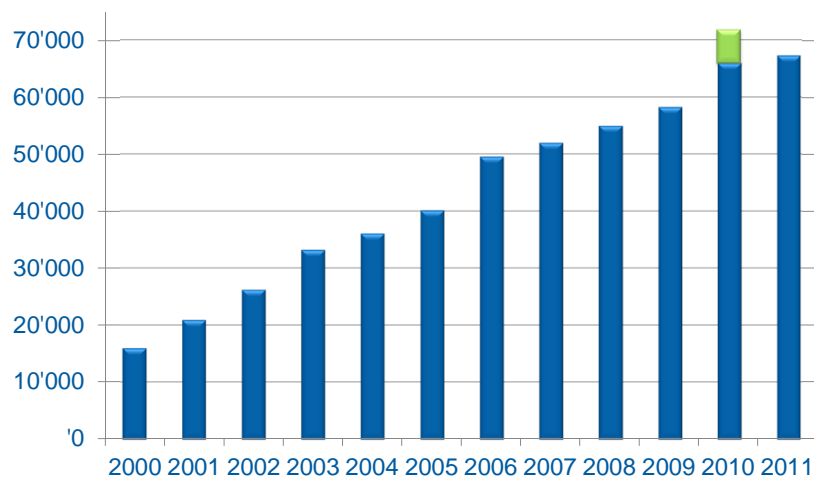
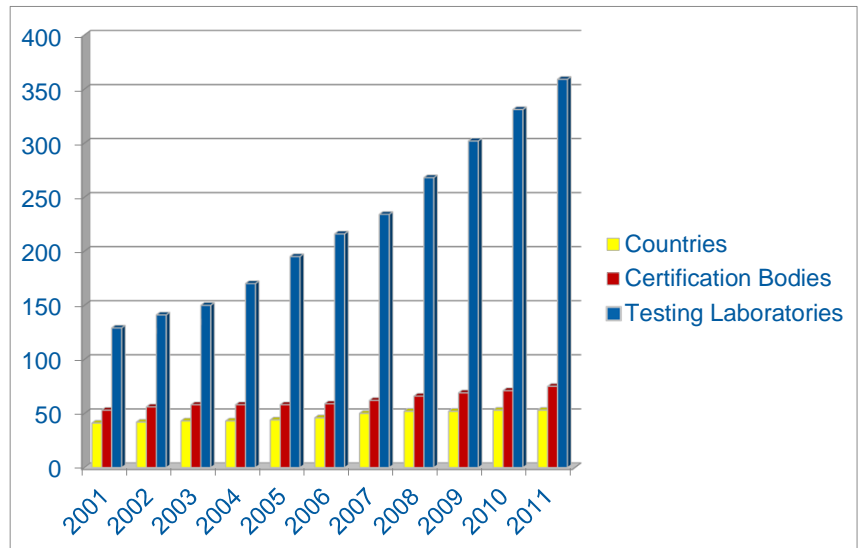
Multimedia
(TC 100)

Fibre optics
(TC 86)

Cables, wires,
waveguides (TC 46)

Household appliances
(TCs 59 & 61)





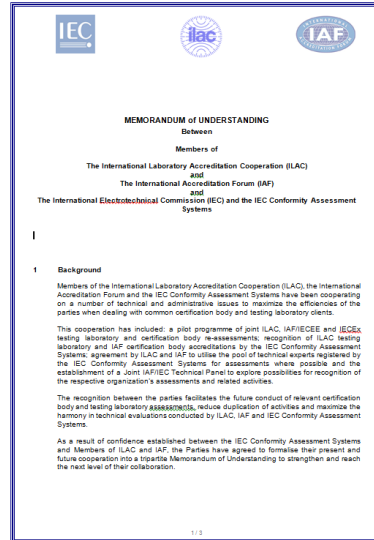
■ Certificates re-issued over the publication of new editions of standards



IEC-ILAC-IAF Memorandum of Understanding



As a result of the confidence established between ILAC and IAF Members and the IEC C.A. Systems (essentially the IECEE), the Parties have agreed to formalise their future cooperation by signing a tripartite MoU with common target and goals in order to increase the efficiency of the discussions, facilitate the future conduct of relevant testing laboratories and certification bodies assessments, reduce duplication of activities and maximize the harmony in technical evaluations conducted by ILAC, IAF and the IEC C.A. Systems.



Unified Reassessment model Example for Testing Laboratory



IEC C.A. System
Secretariat

ILAC Member AB

Testing Laboratory accredited by
COFRAC and accepted by the IECEE



Data Base of a
Common Pool of
Registered Technical
Assessors

Short list of
pre-selected
Technical Assessor(s)

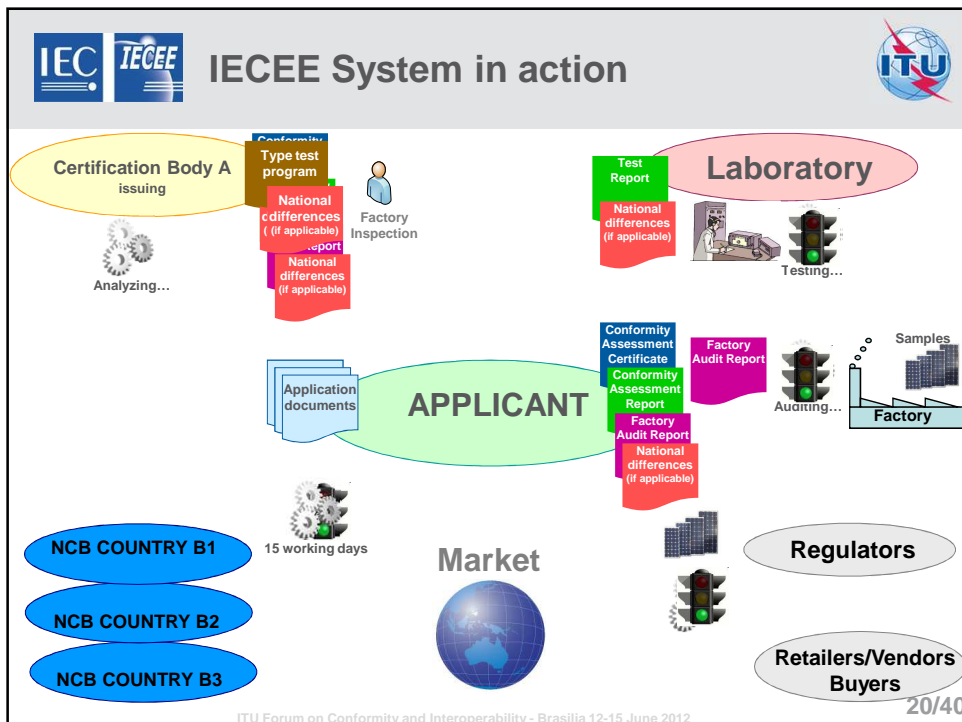
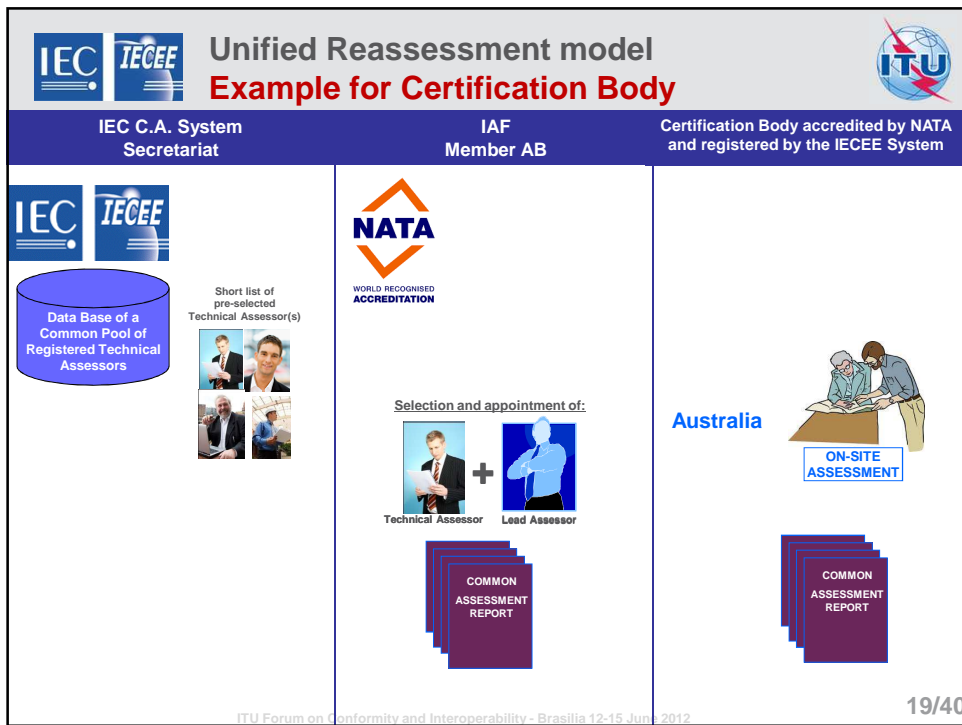


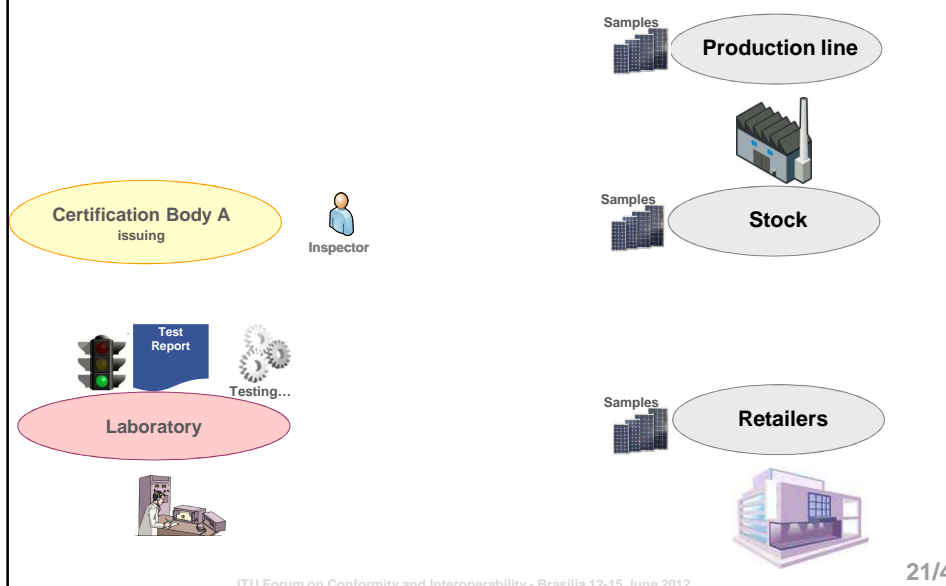
Selection and appointment of:



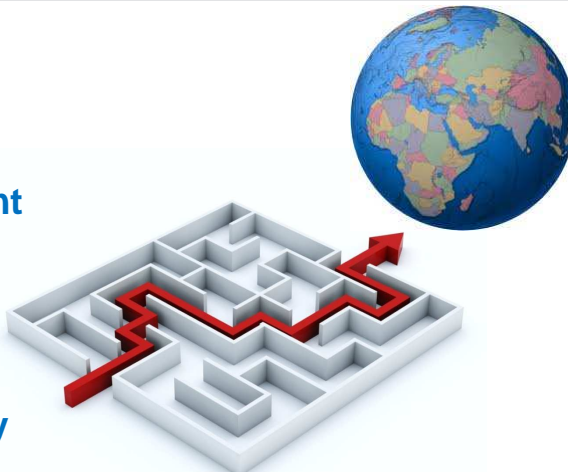
Technical Assessor + Lead Assessor



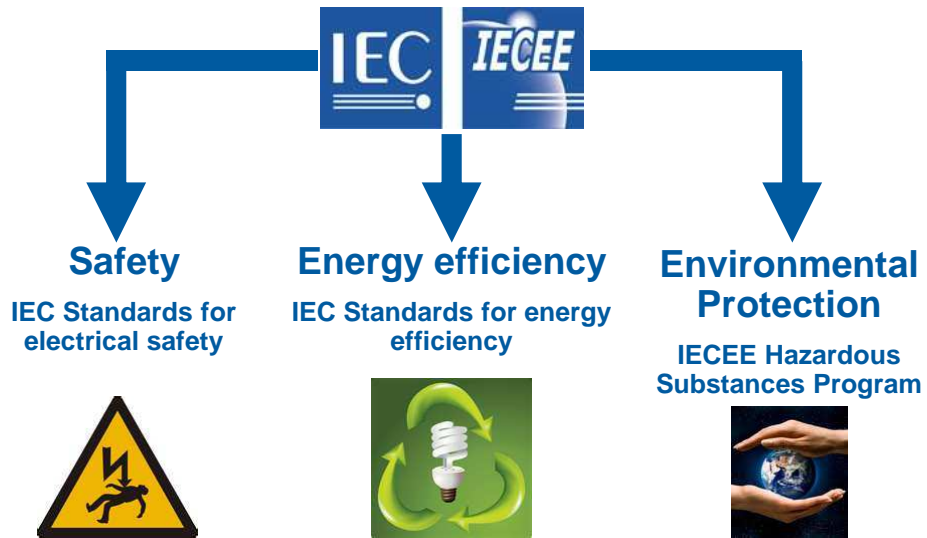




- Ensures that the product are safe
- Prevents redundant testing
- Facilitate trade
- Support regulatory policies



...provides a competitive edge!



- **Chargers for Electrical Vehicles**



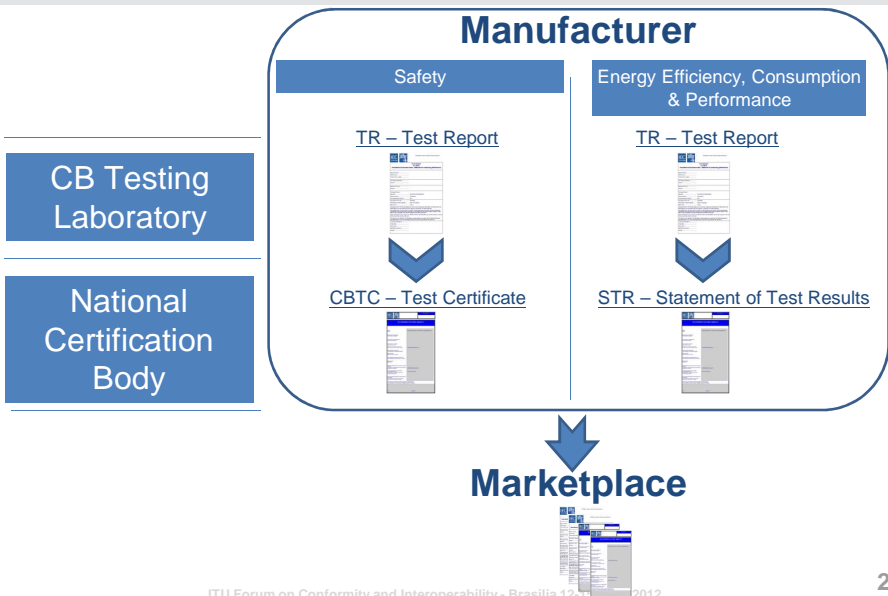
- **Plugin & Charging Stations**



- Energy Consumption
- Energy Performance
- Noise Level



| Energy | | Washing machine |
|---|---------------|-----------------|
| Manufacturer Model | | |
| More efficient | | |
| A | | |
| B | | |
| C | | |
| D | | |
| E | | |
| F | | |
| Less efficient | | |
| G | | |
| Energy consumption kWh/cycle | 0.95 | |
| <small>Actual energy consumption will depend on how the appliance is used</small> | | |
| Washing performance | A B C D E F G | |
| <small>A: higher G: lower</small> | | |
| Spin drying performance | A B C D E F G | |
| <small>A: higher G: lower</small> | | |
| Capacity (cotton) kg | 5.0 | |
| Water consumption / | 55 | |
| Noise (dB(A) re 1 pW) | Washing 5.2 | |
| | Spinning 7.0 | |
| <small>Further information is contained in product brochures</small> | | |



One test

One certification

One mark



One test

One international certificate

One or more certification marks as needed or direct acceptance in the market place by Regulators, Customs, Retailers, Buyers, Vendors, etc..





Governments may impose certification requirements.

Local governmental authorities rely on certification of products to assure that electrical products are safe, suitable and performing

IECEE CB Scheme is widely recognized by Regulators and National Authorities as a proof of compliance to access the Regulated markets



Retailers of electrical goods rely on certification as evidence that aspects such as the safety of electrical appliances have been addressed by a third party, thus giving confidence that products they place on their shelves for sale to the public are not likely to bring harm to their customers

IECEE CB Scheme is widely recognized by Retailers, buyers, vendors as a proof of compliance to access the worldwide markets



Governments concern In & Out concept



IN for IMPORTING

Governments want to make sure that imported electrical goods are safe and operate efficiently

OUT for EXPORTING

Governments interest is to help the National Industry to be able to export their electrotechnical goods in the global market



Developing Countries



Developing Countries adopt/use the IECCEE System to:

1. Protect their Countries from importing non-conforming or non-efficient electrical goods and/or
2. Set the basis to establish a National Conformity Assessment structure e.g. a Testing Laboratory and/or a Certification Body a) to retest certified products in the field of Market Control b) to test non-certified products
3. Participate in the IEC C.A. Systems and benefit from attending workshops and trainings

Protect their Countries from importing non-conforming or non-efficient electrical goods



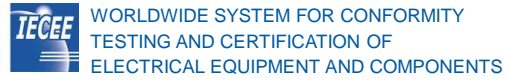
ITU Forum on Conformity and Interoperability - Brasilia 12-15 June 2012



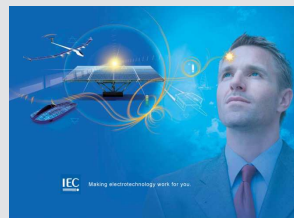
Developing Countries

- Ensures that the products are **safe and efficient**
- Minimize the risk to property and persons
- Contribute to the environmental aspects & public health
- Support regulatory policies

ITU Forum on Conformity and Interoperability - Brasilia 12-15 June 2012



IECEE: taking Conformity Assessment further



www.iecee.org