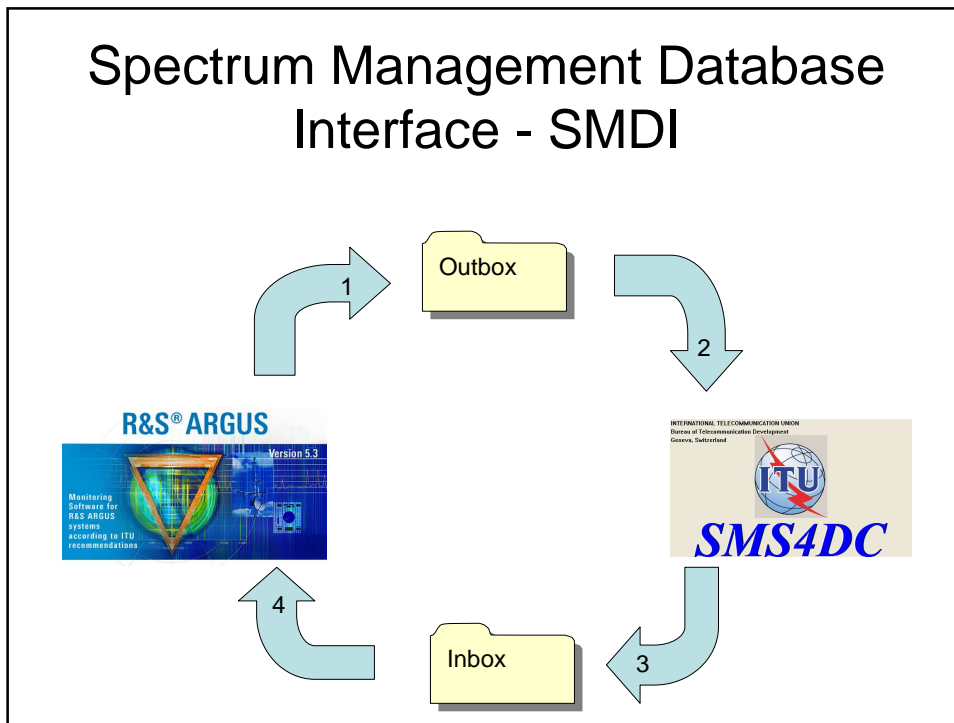
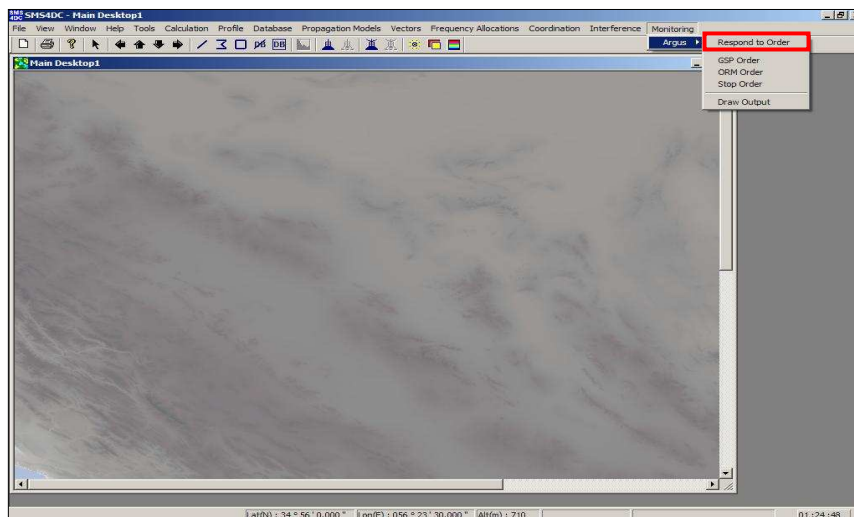


# Spectrum Management Database Interface - SMDI



- Argus - SMDI

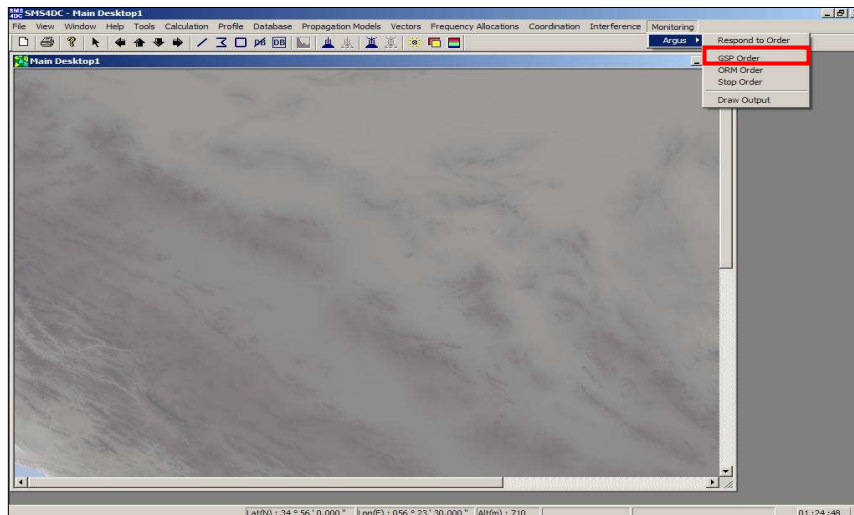


# Order Report Module – ORM – 1

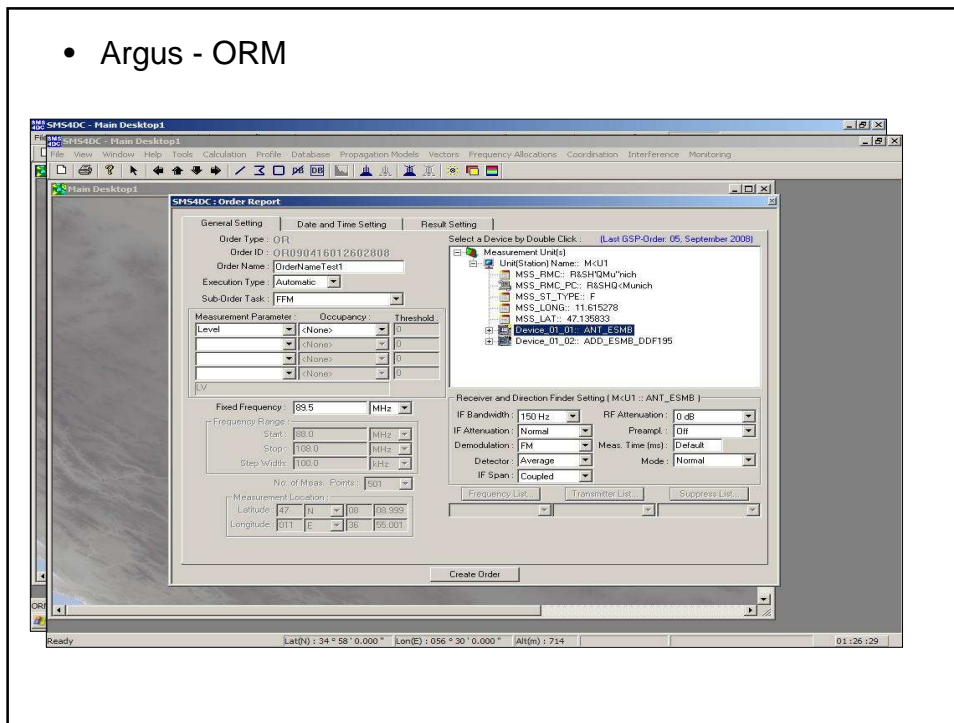
## A- Get System Parameters (GSP)



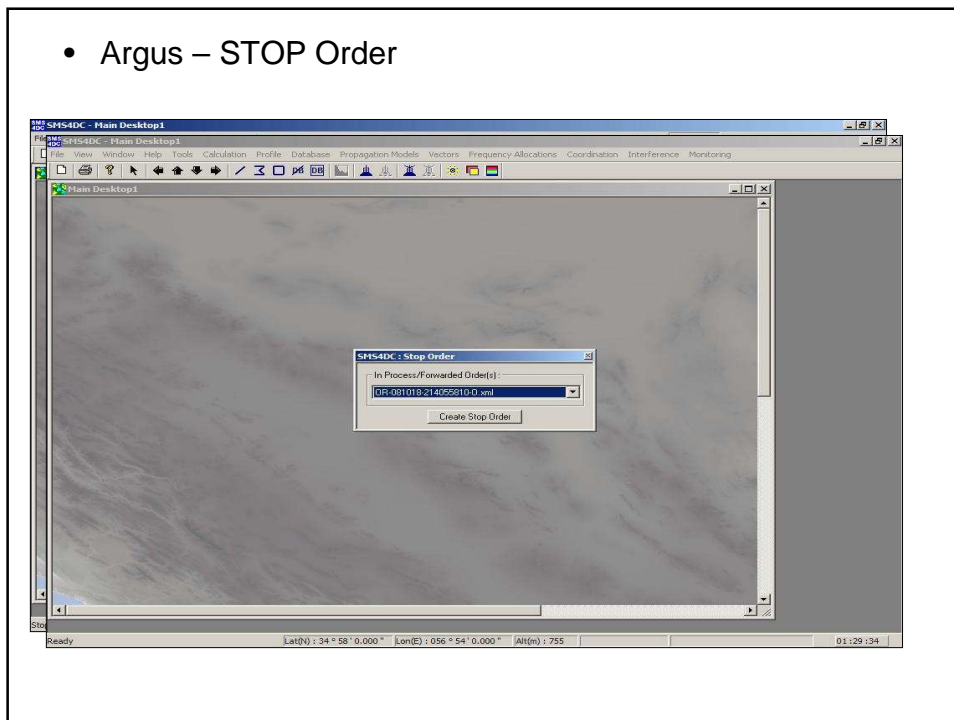
- Argus - GSP



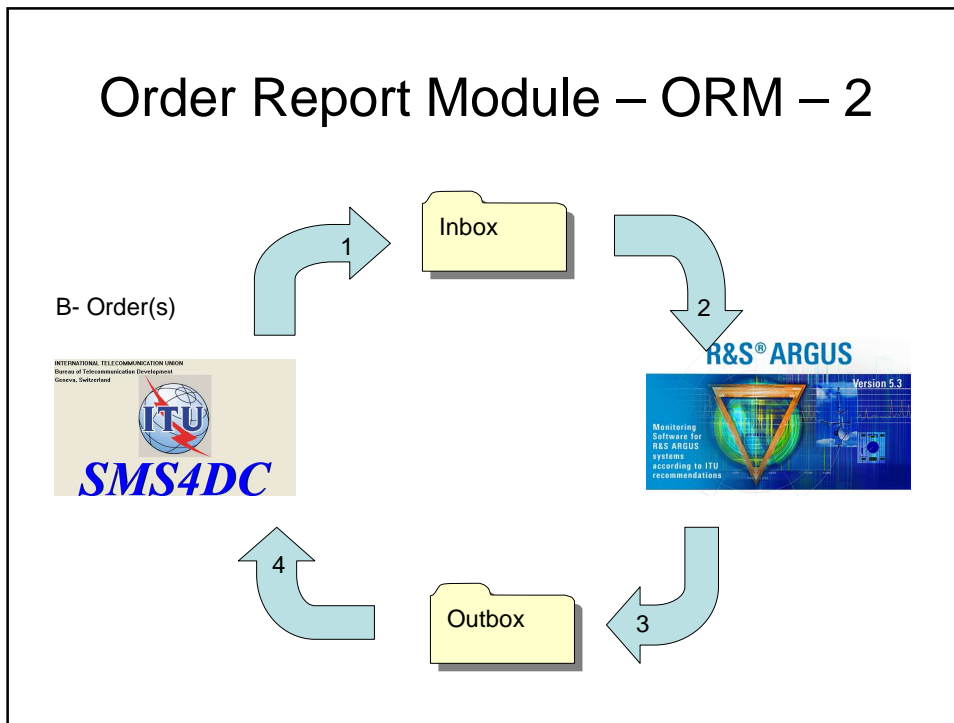
- Argus - ORM



- Argus – STOP Order



## Order Report Module – ORM – 2

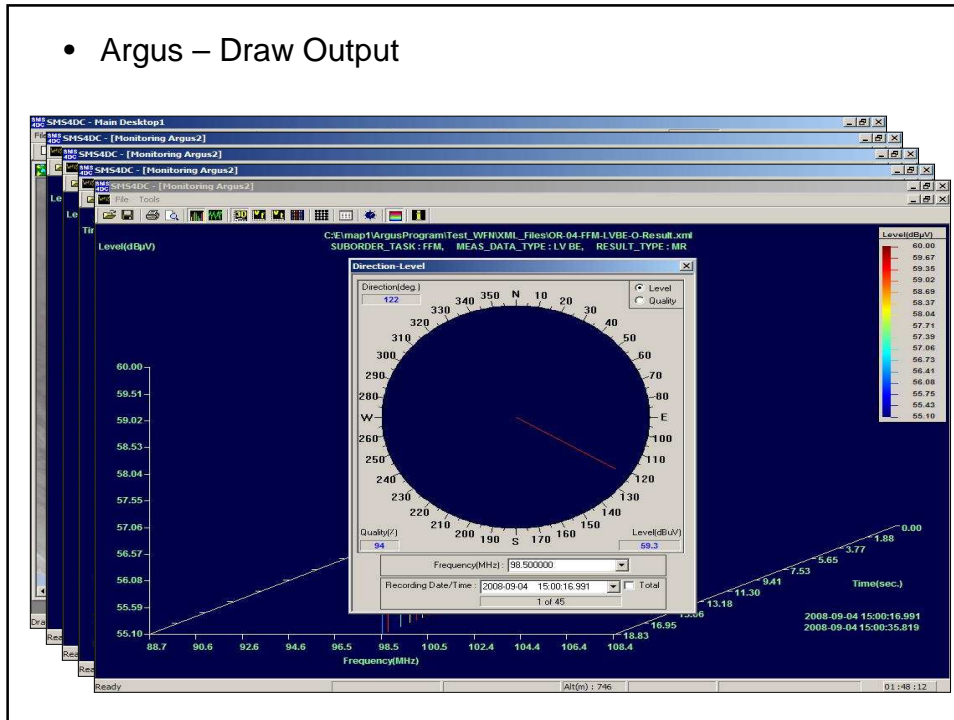


## ORM - parameters

- Level
- Offset
- Frequency
- IF
- Audio
- AM
- FM
- PM
- BandWidth
- Bearing
- Sub Audio Tone
- Program
- PI Code
- Sound ID
- Location

The screenshot shows the 'SMS4DC: Order Report' software interface. The 'Measurement Parameters' section is highlighted with a red box, showing a list of parameters including Level, Offset, Frequency, IF, Audio, AM, FM, PM, BandWidth, Bearing, Sub Audio Tone, Program, PI Code, Sound ID, and Location. The interface also shows device selection, receiver settings, and a 'Create Order' button.

- Argus – Draw Output



- Argus - parameters

