



World Telecommunication Development Conference (WTDC-22)

Kigali, Rwanda, 6-16 June 2022



Document WTDC-22/INF/2-E
27 May 2022
English only

Chairman, ITU-D Study Group 1

ITU-D STUDY GROUP 1 ACTIVITIES

Contact:	Name/Organization/Entity:	Ms Fleur Regina Assoumou Bessou, Chairman, ITU-D Study Group 1
	Phone number:	+225 20 34 42 65
	E-mail:	bessou.regina@artci.ci

[WTDC](#)

ITU-D Study Group 1 activities

Seventh study period (2018-2022)

Regina Fleur Assoumou-Bessou
Chairman, ITU-D Study Group 1

WORLD TELECOMMUNICATION
DEVELOPMENT CONFERENCE



ITUWTDC
KIGALI2022

6-16 June 2022
Kigali, Rwanda

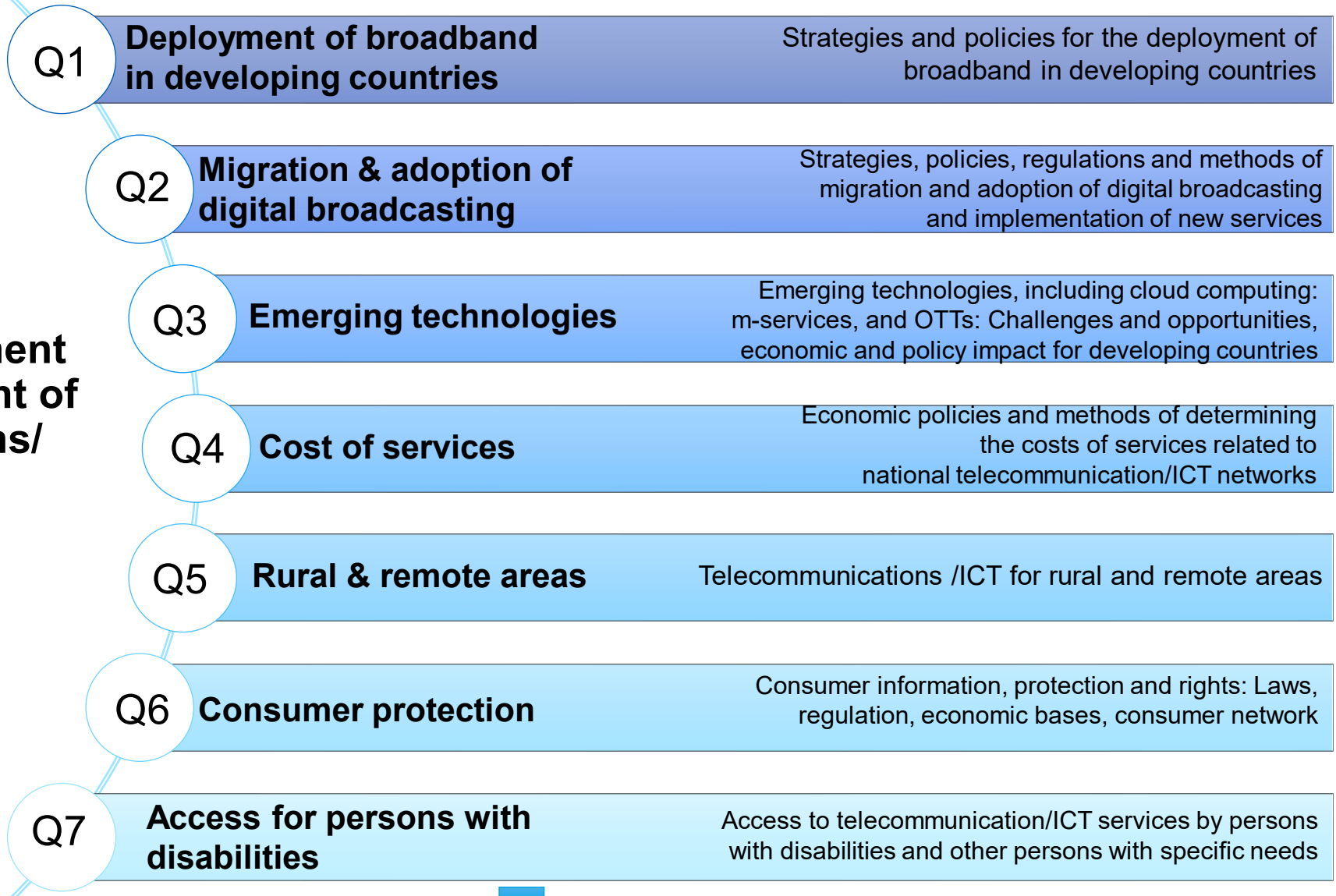


Partner2Connect

2018-2022 study Questions

Study Group 1:

Enabling environment for the development of telecommunications/ ICTs



Study Group 1 Questions and the SDGs

Q1 **Deployment of broadband in developing countries** Strategies and policies for the deployment of broadband in developing countries



Q2 **Migration & adoption of digital broadcasting** Strategies, policies, regulations and methods of migration and adoption of digital broadcasting and implementation of new services



Q3 **Emerging technologies** Emerging technologies, including cloud computing: m-services, and OTTs: Challenges and opportunities, economic and policy impact for developing countries



Q4 **Cost of services** Economic policies and methods of determining the costs of services related to national telecommunication/ICT networks



Q5 **Rural & remote areas** Telecommunications /ICT for rural and remote areas



Q6 **Consumer protection** Consumer information, protection and rights: Laws, regulation, economic bases, consumer network



Q7 **Access for persons with disabilities** Access to telecommunication/ICT services by persons with disabilities and other persons with specific needs

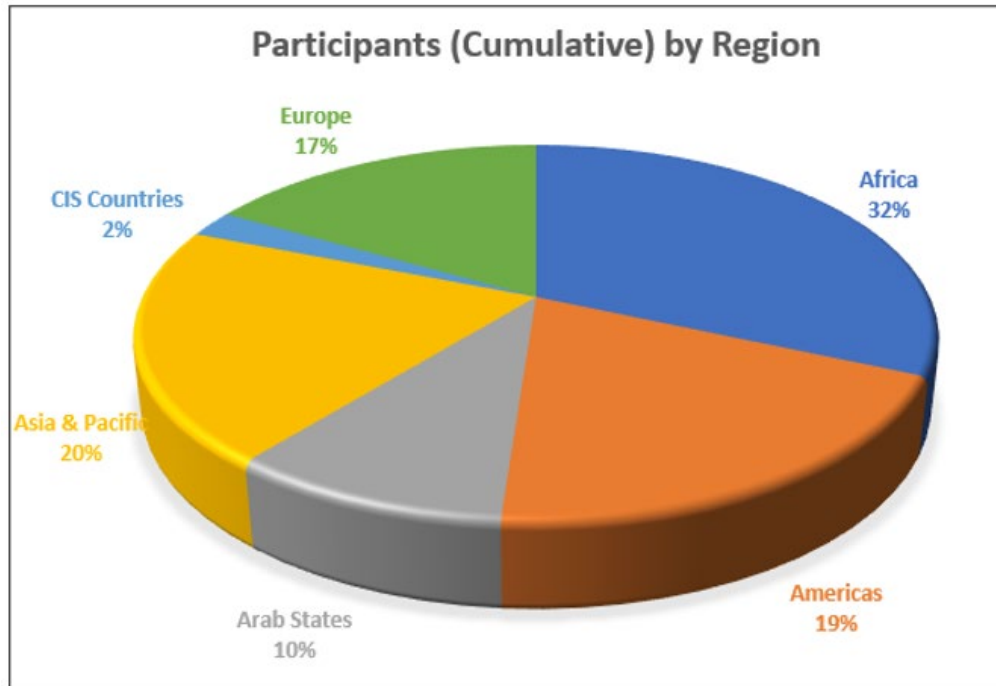


Participation in meetings

9 meetings (+1 informal)

1300 participants

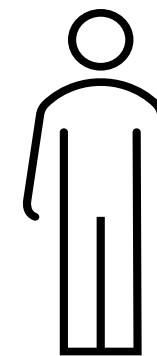
60 Member States per meeting



37%

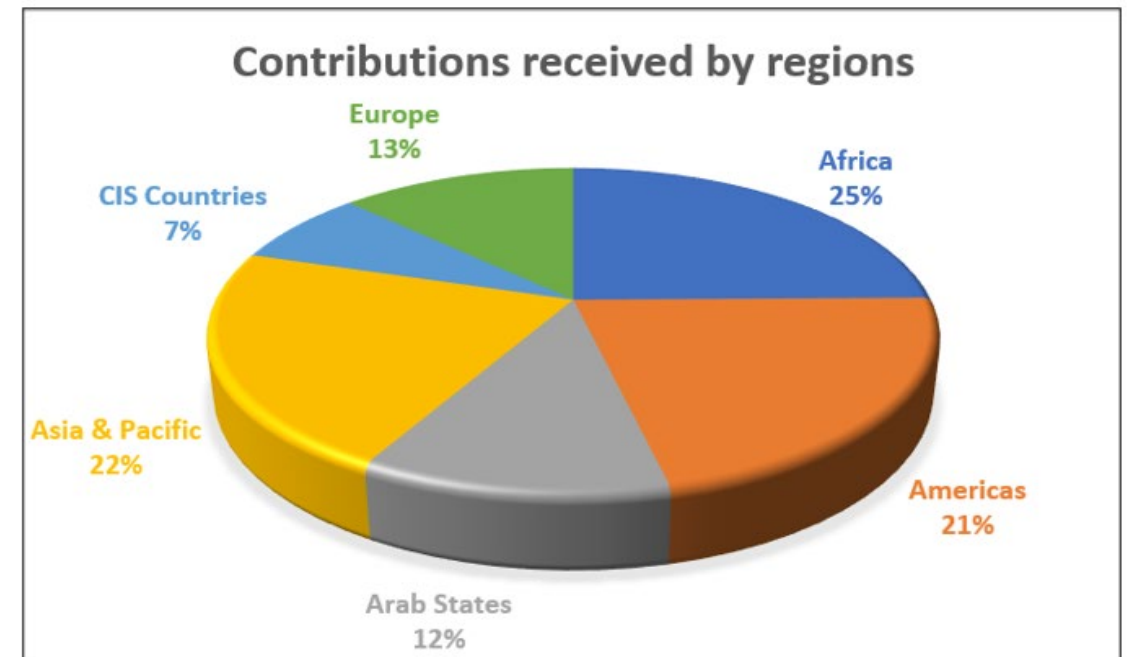
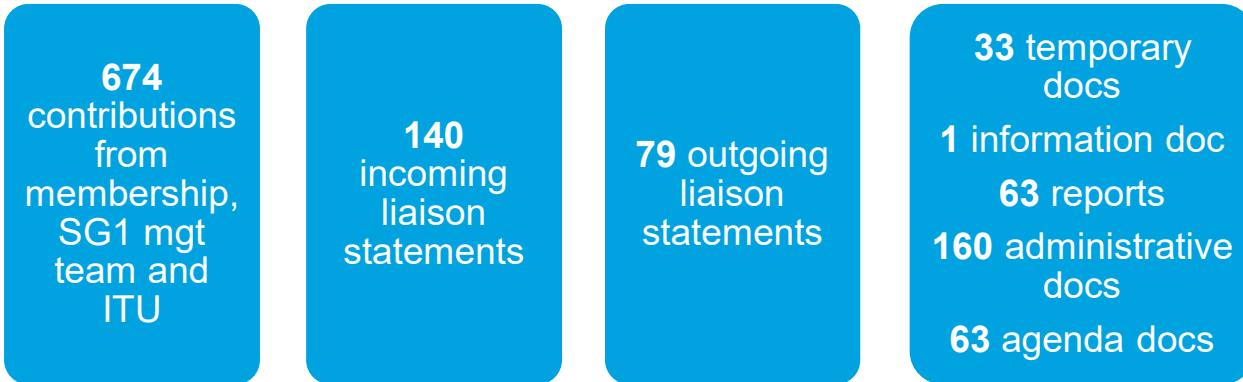


63%



2018-2022 documents and contributions

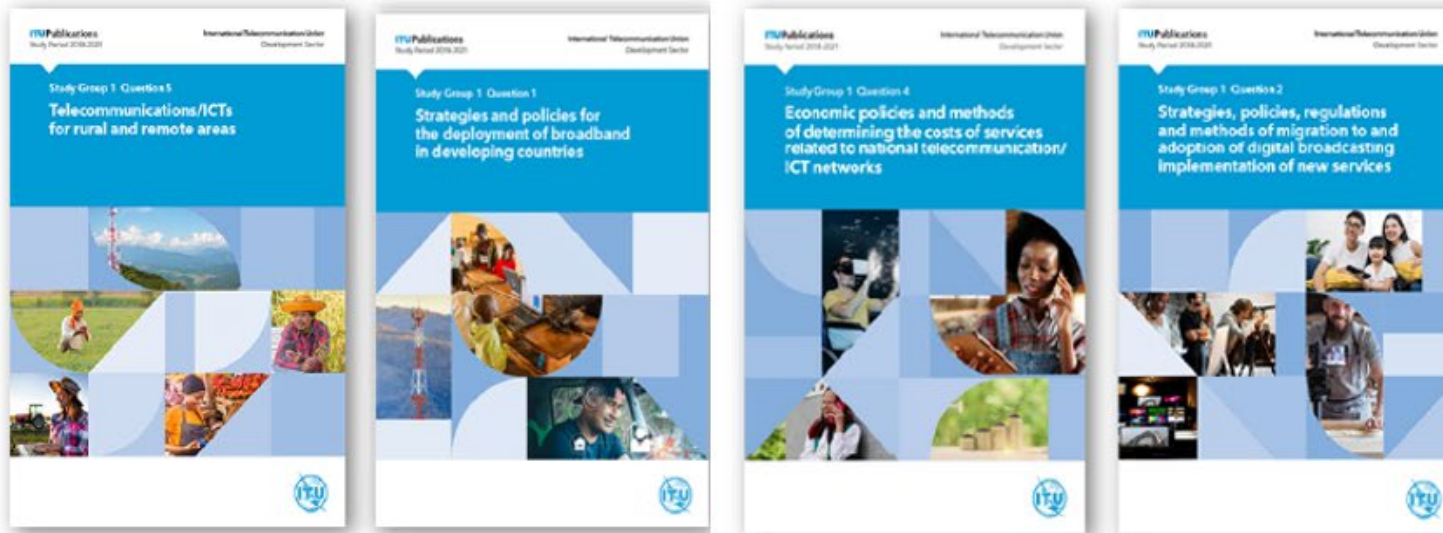
1284 documents considered in meetings



Key results (1/2)

Approved & published:

- 7 output reports
- 1 guideline on cost modeling (Q4/1)



Mr Abdoulaye Dembele (Mali)
Vice-Rapporteur for Question
7/1 (Accessibility) for ITU-D
Study Group 1

Key results (2/2)

6 annual deliverables

7 revised ToRs of Questions

15 workshops

6 webinars

7 videos

8 ITU news blogs

Firsts:

- fully virtual formal meetings; and
- online sign interpretation the RGQ meeting in 2022 for Question 7/1

ITUWebinars Reflections on COVID-19

ITU-D Study Group Dialogues on Emerging Technologies (Cloud), Digital accessibility, Economic implication on infrastructure, Unsolicited commercial communications, Broadcasting services, E-health, Emergency telecommunications, Environment

27 May 14:00 - 15:30, CEST
24 June 13:00 - 14:00, CEST
29 June 14:00 - 15:30, CEST
2, 3 & 6 July 14:00 - 15:30, CEST
14 July 14:00 - 15:40, CEST
15 July 14:00 - 15:30, CEST
29 July 14:00 - 15:30, CEST

UIT-D Commissions d'études

Période d'études 2018-2021
Question 5/1 Télécommunications/ TIC pour les zones rurales et isolées
Produit annuel 2019-2020

Solutions en matière de développement du large bande et de connectivité au large bande pour les zones rurales et isolées

Résumé analytique

Après examen des principales mesures prises en vue de l'installation d'infrastructures dorsales de télécommunication et solutions en matière de connectivité sur le dernier kilomètre, le présent produit annuel décrit les tendances actuelles concernant la connectivité sur le dernier kilomètre, les mesures de politique générale et les technologies qu'il est recommandé d'utiliser sur le dernier kilomètre, dans les zones rurales et isolées, ainsi que dans les petits États insulaires en développement (PEID). Les contributions soumises et les discussions tenues à un atelier sur le développement du large bande dans les zones rurales, organisé en septembre 2019, ont été intégrées dans le produit annuel. En guise de conclusion, des recommandations utiles sont formulées à l'intention des régulateurs, des décideurs et des opérateurs, qui pourront s'en servir comme lignes directrices afin de connecter les communautés rurales et isolées.

电信发展部门研究组

对包括新业务和应用在内的数字过渡成本结构的考虑

内容摘要

一些国家已经完成或正向数字广播技术的过渡，而其他国家的数字广播技术过渡仍处于完成过渡的过程中。第4/9号课题2014-2017年研究期的最终报告指出，过渡产生了大量战略、规划和实施行动，实现了效益最大化的成功进程。

最近，发展中国家可以考虑的新广播技术和标准的出现正在成为一个主要趋势，这有可能完全改变内容传播的商业模式。本文件从经济角度考虑了在向数字广播过渡的过程中涉及的一些成本，以及一些有关落实新广播技术、业务和应用的其他考虑因素。

قطاع تنمية الاتصالات - لجان الدراسات

الآثار الاقتصادية للخدمات المتاحة بحرية على الإنترنت (OTT) على الأسواق الوطنية للاتصالات/تكنولوجيا المعلومات والاتصالات

ملخص تنفيذي

الانتقال الكبير إلى البيانات

شهدت التحولات في تكنولوجيا الشبكات والاتصال من نموذج أعمال الصوت والبيانات التقليدية إلى نموذج أعمال يقوم بشكل أكبر على البيانات الطريق لنجاح الخدمات المتاحة بحرية على الإنترنت. مما أدى إلى تغيير طريقة حصول الناس على الموارد من أجل الصحة والتعليم والزراعة والخدمات الحكومية العالية وحتى مشغلو شبكات الاتصالات المتخلفة على نموذج متزايد. نماذج الأعمال القائمة على البيانات تعاد لأن شبكات تولد القيمة الجارية في كل ساعة تقريباً. **كيف تؤثر الخدمات المتاحة بحرية على الطلب على الخدمات مشغلي شبكات الاتصالات المتخلفة وأيضاهاهم وتكاليفهم؟**

الطلب لدى الزيادة الهائلة في حصة البيانات والاستعمال للخدمات المتاحة بحرية على الإنترنت

How more inclusive ICT policy and infrastructure could stem the spread of COVID-19

News - 5 Oct 2020

Epidemiological evidence has shown that the spread of pandemics across regions and nations follows patterns of underlying social and economic inequalities, among them digital exclusion. But how does digital exclusion impact the effectiveness of public health policies created in response to those pandemics? And how can more digitally inclusive policies be crafted in ways that could curb the spread of pandemics such as COVID-19?

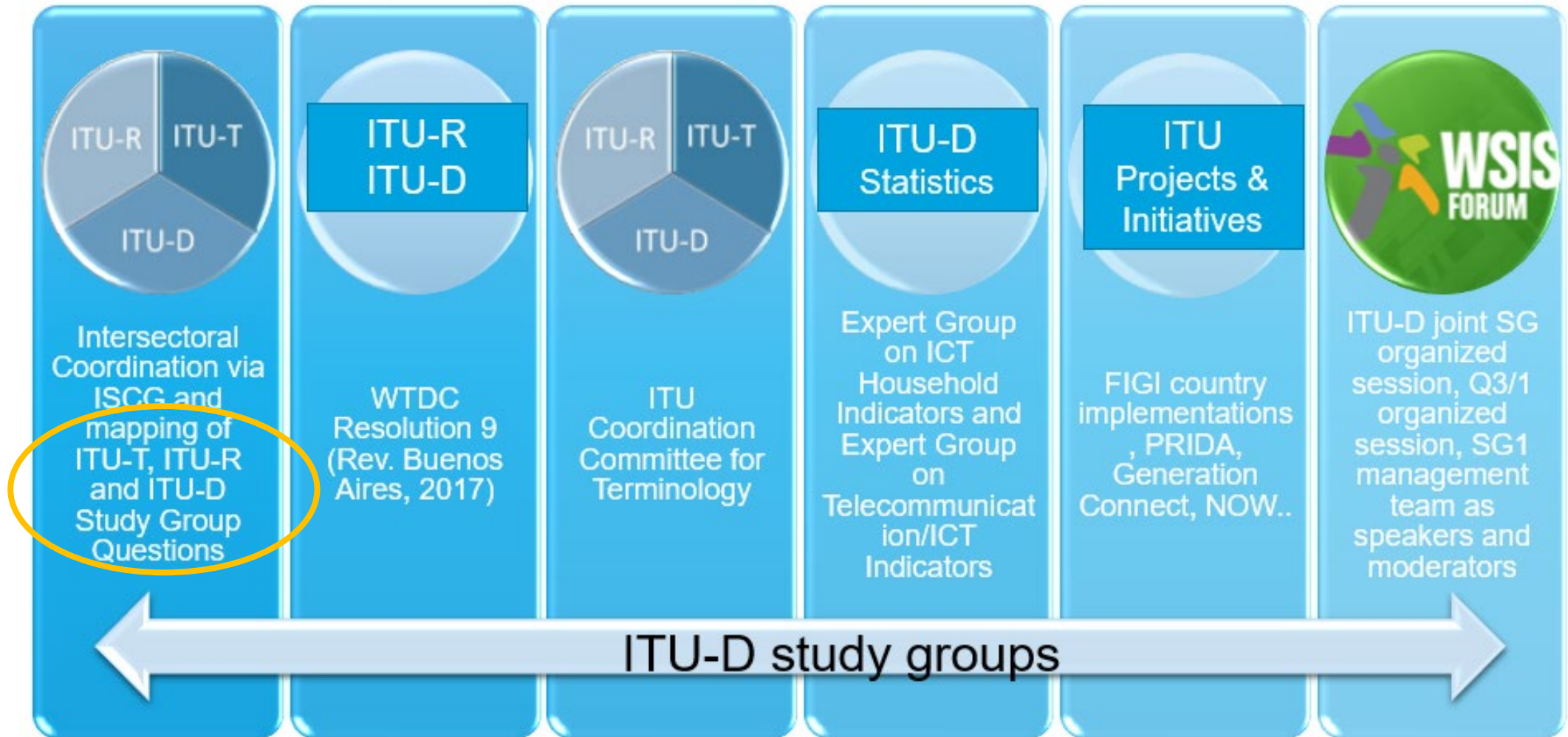
Such were the questions driving an ITU public webinar on the impact of unequal ICT on economic policies and methods of national telecommunication/ICT development.

Subscribe to our newsletter

Enter your email

Sign up

Collaboration with other groups



Possible future areas of study

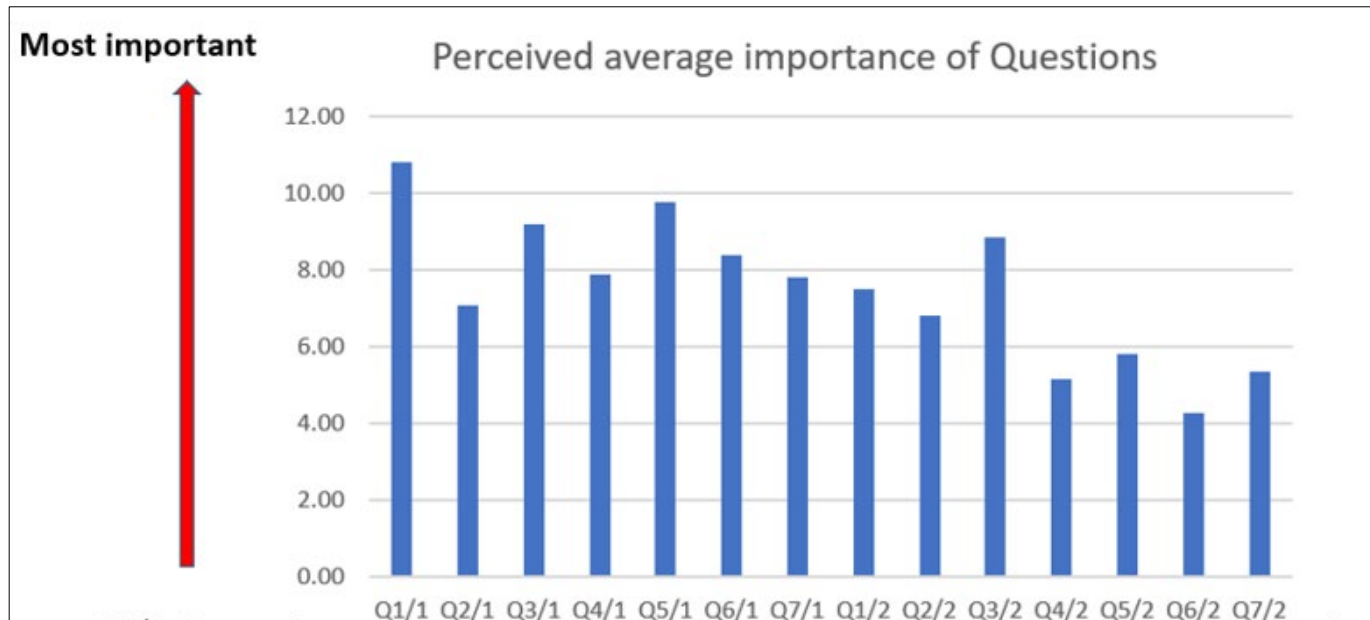
Possible areas proposed include:

- **Broadband deployment:**
Analysis of the impact of delay in the deployment of advanced telecommunication infrastructures caused by the COVID-19 pandemic
- **Cost of services:** Framework for establishing contribution of telecommunications/ICT to the GDP of the country
- **Accessibility:** policies as well as applications and services

- Specific collaboration aspects on Questions such as:
 - between broadband deployment, cost of services and consumer protection (Q1/1, Q4/1 and Q6/1)
 - between digital broadcasting, emerging technologies (OTT, cloud computing and m-services) and cost of services(Q2/1, Q3/1, Q4/1)
 - between emerging technologies and smart cities (Q3/1, Q1/2)
- Revisions to output reports of the previous study period as needed
- Proposals were discussed and submitted to TDAG for changes to the current ToRs of each Question. All changes proposed are in Annex 6 to the report.

2018-2022 Joint Survey findings

- **68** responses (37 responses in previous survey)
- Highest % of respondents from developing countries
- Attendance to **virtual meetings** were high as they are **less resource intensive**.
- Lack of budget is the main reason for not attending physical meetings in the past
- Member States are perceived as encouraging SMEs, academia and industry participation in study groups' work
- Perceived that certain important topics were not being addressed by study questions



Perceived importance SG1 Questions

1. Broadband for developing countries
2. Telecoms for rural and remote areas
3. OTTs, mobile & cloud services
4. Consumer protection
5. Cost of services
6. ICTs for persons with disabilities
7. Migration & adoption of digital broadcasting

Towards a shared Vision 3Is

We call for a shared vision in order for us to achieve the mission assigned to SGs.

We should capitalize on the expertise of all the stakeholders.

In order for us to get good results, I would like to see the ITU-D Study Groups guided by the following “**3I**” actions:

- More **Interaction** between stakeholders in the work (contributions, experience sharing, etc.);
- More **Innovation** in the working methods;
- More **Implementation** of the results of the ITU-D Study Group outcomes by Member States

This approach will allow us to:

Improve the visibility of ITU-D Study Groups;

Implement innovative working methods, inspired by the efficient working methods;

Strengthen the integration of all stakeholders in the work of the ITU-D Study Groups, and;

Produce quality results and products of the ITU-D Study Groups and facilitate implementation in the Member States.

Main achievements ITU-D Study Group 1 (2018- 2022 cycle)

Interaction – Done

- More management team (e)meetings : Question, Study Group and Joint
- What's app groups for efficient e-meetings
- Close collaboration with SG2
- More liaison statements with relevant groups in other sectors as well as with others UN agencies
- Role of Coordinators (EGH, EGTI, CCT, PRIDA, FIGI, Res. 9, WTDC preparation process (Declaration, Working methods, Future of Questions, Streamlining of Resolutions/ TDAG-WG RTPD)
- ITU-D Members active in Questions, as experts for BDT relevant products e.g. Last Mile Connectivity, Digital Regulation Handbook

**Main
achievements
ITU-D Study
Group 1 (2018-
2022 cycle)**

Innovation - Done ✓

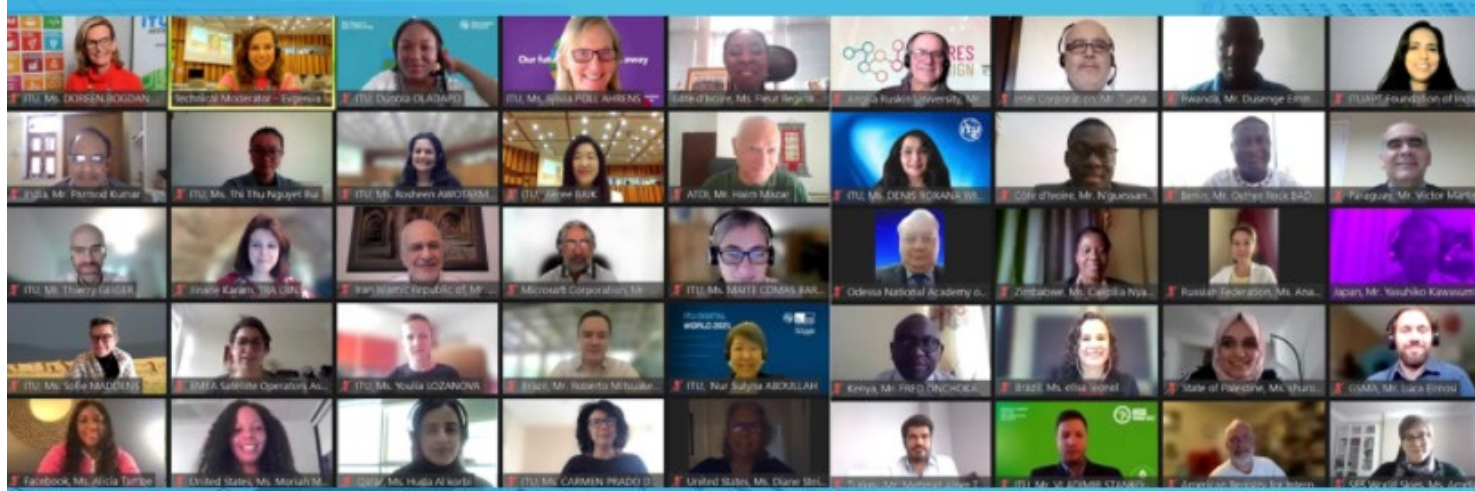
- eMeetings, Ms Teams for document sharing and co-editing
- Updated Mapping of Questions across sectors
- Vice Chair roles for regions – guidelines
- Workshops, WSIS seminars, RDFs, REDs
- Webinars to address COVID-19 in Output Reports
- Annual Deliverables, Blogs, Interviews
- Professional editing of final reports
- Captioning for all meetings
- Fully virtual RGQ and Plenaries
- Results Based Management (RBM)

Main achievements ITU-D Study Group 1 (2018- 2022 cycle)

Implementation – to do

From Report Findings and Guidelines to in country implementations and ITU-D Recommendations

- Timely Publications of free reports in all UN languages – Output reports by end June free
- Communication / promotion/implementation plan including webinars and joint actions with BDT, ITU and beyond
- ITU-D Study Group Management and active contributors' role
- Regional activities (a particular call for ladies in SGs management teams to be more involved in the initiative NoW, and in regional activities)
- Member driven activities (at regional and national level)
 - Government
 - Academia
 - SMEs
 - Industry



Thank you to everyone who contributed to SG1!



Thank you



ITUWTD C
KIGALI2022