



# Notification of frequency assignments for recording in the Master Register and Plans

**Ms. Sujiva Pinnagoda**  
Terrestrial Services Department  
Radiocommunication Bureau  
International Telecommunication Union

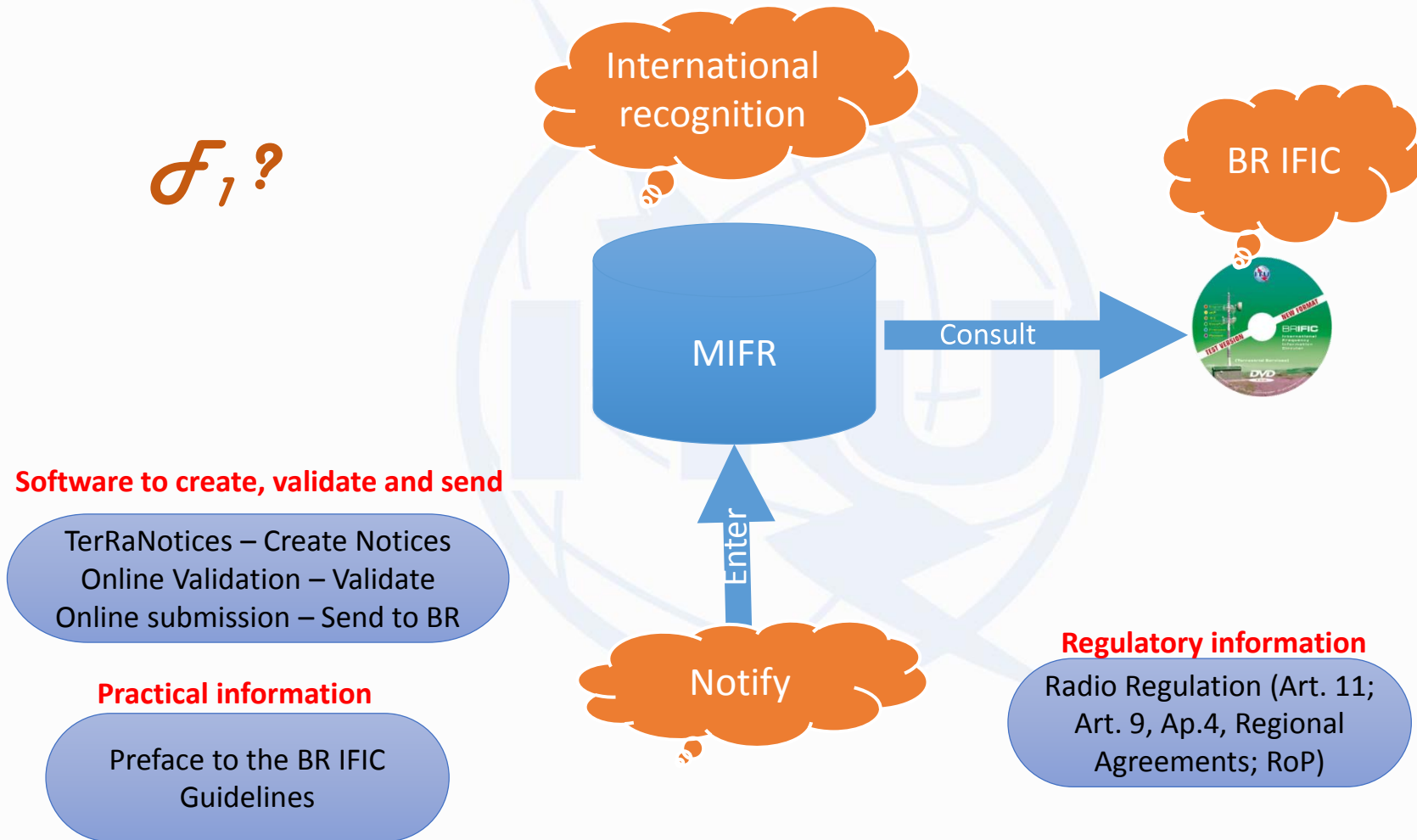
12-16 December 2016, Geneva

# Overview

- **Notification of frequency assignments for its recording in the Master Register (MR)/Master International Frequency Register (MIFR)**
  - Only those frequency assignments that are already in operation
  
- **Notification of frequency assignments for the modification of Terrestrial Plans**
  - These frequencies are pre-reserved for a given administration within a specific frequency range and a specific geographical area

# What is the MIFR? Why to notify

$\mathcal{F}_1?$

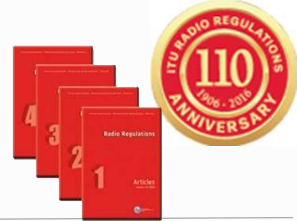


12-16 December 2016, Geneva

# International Recognition – No. 8.3

- **Why do you need international recognition?**
  - Other administration have to take into consideration your assignment when they are making their assignments in order to avoid any harmful interference;
  
- **Which assignments can claim international recognition?**
  - Those assignments that are recorded in Master International Frequency Register (MIFR) with favorable findings (in accordance with the Radio Regulations);
    - *Administrations rights and obligation*
  
- **How to enter the MIFR?**
  - Administration must notify their assignments to the Radiocommunication Bureau (BR)
  
- **All assignments should be notified?**
  - No, only those that comply with Nos. 11.3 – 11.9

# Which assignments to notify?



- **Frequency assignments that shall be notified to the Bureau (Nos. 11.3 – 11.9):**
  - Those capable of causing harmful interference to any service of another administration;
  - Used for International radiocommunication;
  - Subject to world or regional frequency allotment or assignment plan which does not have its own notification procedure;
  - Subject to the Art. 9 coordination procedure;
  - Request for international recognition;
  - For information only.
  
- **Frequency assignments that shall not be notified to the Bureau (Nos. 11.13 – 11.14):**
  - Assignments to stations in the amateur service;
  - Assignments to ship stations and to mobile stations of other services;
  - Assignments involving specific frequencies which are prescribed by these Regulations for common use by terrestrial stations of a given service.

# Notification to the Bureau (1/4)

## ➤ What to Notify?

- For the recording of a frequency assignment in the Master Register:
  - Administrations shall provide the relevant characteristics listed in Appendix 4 to the RR (No. 11.15).*
- For the modification of a given Plan:
  - Administrations shall provide the relevant characteristics listed in the Annexes of the relevant Agreement.*
- Preface to the BR IFIC
  - Symbols and codes are defined for some data items, such as:*
    - Class of station, Nature of service, etc.;

<http://www.itu.int/en/ITU-R/terrestrial/brific/Pages/default.aspx>

# Notification to the Bureau (2/4)

## ➤ When to notify?

- For the recording in the Master Register (MIFR), the notices shall reach the Bureau:
  - Not earlier than three years before the assignment is brought into use, for terrestrial stations involved in coordination with a satellite network and for high altitude platform stations operating as a base station to provide IMT;*
  - Not earlier than five years before the assignment is brought into use, for assignments to high altitude platform stations in the fixed service;*
  - Not earlier than three months before the assignment is brought into use, for all other terrestrial stations;*
  - Provision Nos. 11.24 – 11.26A.*

# Notification to the Bureau (3/4)

## ➤ When to notify? (cont.)

➤ For the recording in the Master Register (MIFR) for assignments that fall within planned bands governed by World or Regional Agreements:

*Only if there is a corresponding plan entry.*

*In case there is no corresponding plan entry:*

1. Submit a Plan modification notice to the BR;
2. Wait for the Plan to be successfully modified;
3. Notify the frequency assignment to the BR under Article 11.



# Notification to the Bureau (4/4)

## ➤ How to notify?

- A notice for each frequency and for each station.
- Except, if the same frequency is re-used with the same technical characteristics many times within a given area:
  - ❑ *A single notice giving the typical characteristics of one station of the network (RR11.17);*
    - ❑ Does not apply to all services or to all frequency bands (Nos. 11.18 – 11.21B):
      - ❖ Station covered by Allotment Plans in Ap. 25, Ap.26 and Ap.27;
      - ❖ Broadcasting stations;
      - ❖ Terrestrial stations within the coordination area of an earth station, etc.

# Notice types

Notice types are grouped into three categories

**LFMF**

Low and medium frequency bands for sound broadcasting:

**T03 and T04**

**FMTV**

VHF and UHF frequency bands for sound and television broadcasting

**T01, T02, G02, GS1, GT1, GS2, GT2, GB1**

**FXM**

Fixed, mobile and other terrestrial services:

**T11, T12, T13, T14, T15, T16, T17, G11, G12, G13, G14**

# Electronic notice(s) Format

```
<HEAD>
t_adm=HNG
</HEAD>
```

```
<NOTICE>
t_ <NOTICE>
t_ t_n <NOTICE>
t_ t_d t_notice_type=T12
t_ t_fr t_d_adm_ntc=2010-11-26
t_ t_fr t_fragment=NTFD_RR
t_ t_st t_freq_assgn=128.1500
t_ t_pr t_station_id=AIR AMBULANCE
t_ t_ac t_prov=RR11.2
t_ t_ct t_adm_ref_id=SF22125
t_ t_si t_ctry=HNG
t_ t_d t_site_name=BUDAORS
t_ t_is t_d_inuse=2010-08-01
t_ t_na t_is_resub=False
t_ t_ac t_nat_srv=OT
t_ t_op t_addr_code=A
t_ t_ac t_op_agcy=006
t_ t_st t_action=ADD
t_ t_er t_stn_cls=FD
t_ t_b t_emi_cls=A3EJN
t_ t_lo t_bdwidth_cde=6K00
t_ t_la t_long=+0185956
t_ t_op t_lat=+465959
t_ t_op t_op_hh_fr=00:00
t_ t_op t_op_hh_to=24:00
```

```
<ANTFNNA>
t_ <ANTFNNA>
t_ t_ <ANTENNA>
t_ t_ t_pwr_xyz=Z
t_ t_ t_pwr_ant=7
t_ t_ t_pwr_dbw=4.8
t_ t_ t_pwr_eiv=E
t_ t_ t_ant_dir=ND
t_ t_ <RX_STATION>
t_ t_ t_geo_type=CIRCLE
t_ t_ t_long=+0185956
t_ t_ t_lat=+465959
t_ t_ t_radius=300
t_ t_ </RX_STATION>
t_ t_ </ANTENNA>
t_ </NOTICE>
```

```
<TAIL>
t_num_notices=3
</TAIL>
```

Res. 906 (Rev. WRC-15):  
All submission of notices for  
terrestrial services to the BR shall  
be in electronic format only.  
2009: No paper notices.

The electronic notice file is a  
structured text file.

# Electronic notice(s) Format

<http://www.itu.int/en/ITU-R/terrestrial/tp/Pages/Notification.aspx>

## Guidance for Notification for terrestrial services

YOU ARE HERE HOME > ITU-R > TERRESTRIAL SERVICES > TERRESTRIAL PUBLICATION AND REGISTRATION DIVISION (TPR) > GUIDANCE FOR NOTIFICATION FOR TERRESTRIAL SERVICES

SHARE    

The main objective of the notification is to obtain international recognition by recording frequency assignments in the Master International Frequency Register (MIFR).

Any frequency assignment that may cause or receive interference to or from stations of other administrations shall be notified to the ITU in order to be recorded in the MIFR and obtain international recognition.

For this purpose, a notice must be submitted to the Bureau for each station or group of stations. As there are different types of stations, the Bureau has created different types of notices based on Appendix 4 to the Radio Regulations and the different Regional Agreements. These notices are grouped by service, frequency band and applicable region.

RELATED LINKS

CONTACT PERSON

- Notification Tutorial
- Submission of notices

### VHF/UHF BROADCASTING

- VHF/UHF television and VHF sound broadcasting service (except television and sound broadcasting service governed by the GE08 Agreement)
- Broadcasting service governed by GE08 Regional Agreement

### FIXED AND MOBILE

- Fixed and mobile (except fixed and mobile governed by the GE08 Agreement)
- Terrestrial services other than broadcasting governed by GE08 Agreement

### LF/MF BROADCASTING

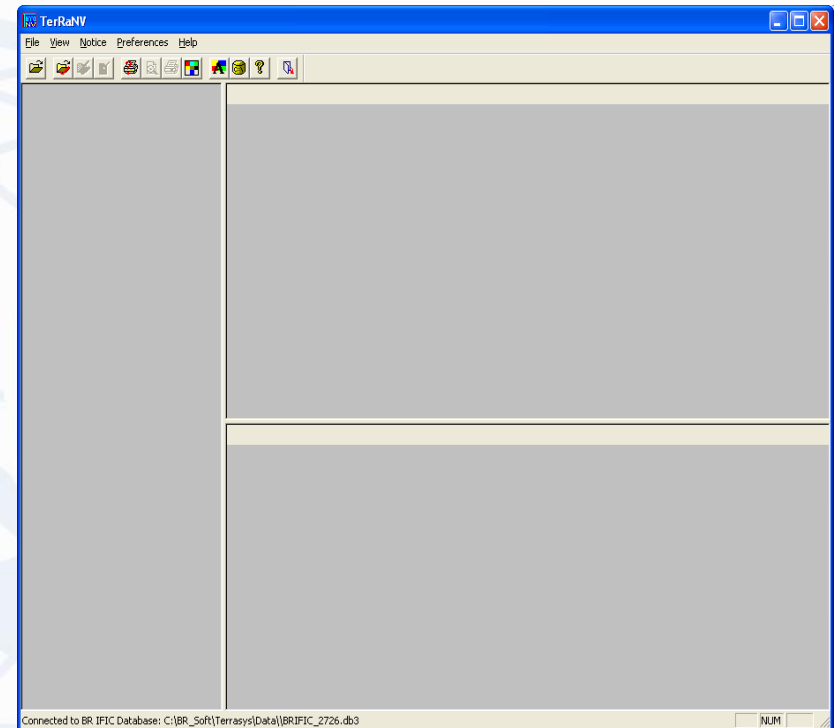
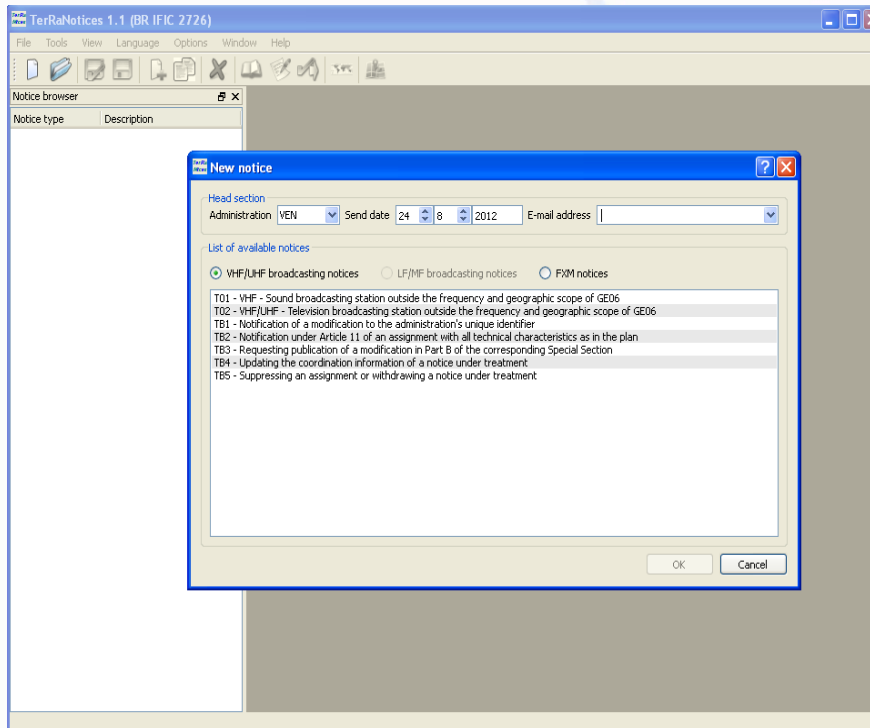
- LF and MF sound broadcasting service in Regions 1 and 3 governed by the GE75 Agreement
- MF sound broadcasting service in Region 2 governed by the RJ81 Agreement

Additional information and descriptions can be found in the appropriate guidelines on this web page as well as samples of different notice types.

# Creation and Validation

TerRaNotices

TerRaNV



Notice Validation



# Online validation

## ➤ Online validation tool:

- Deep validation such as checking the frequency band, geographical coordinates, potential duplicate notices, etc.
- Validation is done in batch mode so once the validation is completed the user is notified via an e-mail
- Available for all TIES Users at:

<http://www.itu.int/ITU-R/terrestrial/OnlineValidation/Login.aspx>

# Submission to the BR

## ➤ How to submit the notices to the Bureau?

### ➤ Secured web Interface:

- WISFAT (Web Interface for the Submission of Frequency Assignments/Allotments for the Terrestrial Services);*
- Immediate acknowledgement report to the notifier.*

### ➤ Access to the WISFAT interface is restricted to registered TIES users selected by the administration as the national notifier(s):

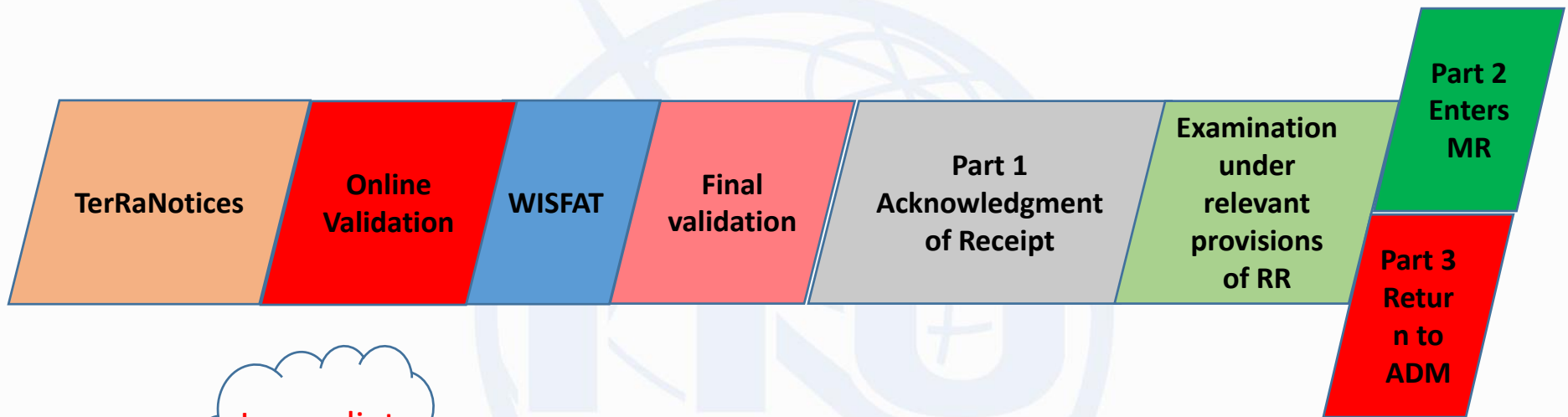
- Official e-mail request ([brmail@itu.int](mailto:brmail@itu.int)) must be sent to the BR from the administration:*

- ❖ Name, position, service e-mail, TIES Username;
- ❖ As many as required;
- ❖ Administration's responsibility to keep this notifiers database up to date;
- ❖ Access to WISFAT:

<http://www.itu.int/en/ITU-R/terrestrial/tpr/Pages/Submission.aspx>



# Processing of notices: MIFR



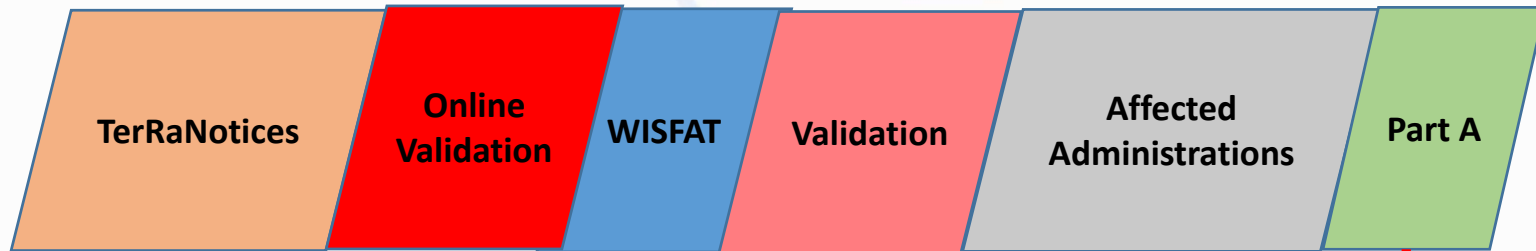
Immediate result



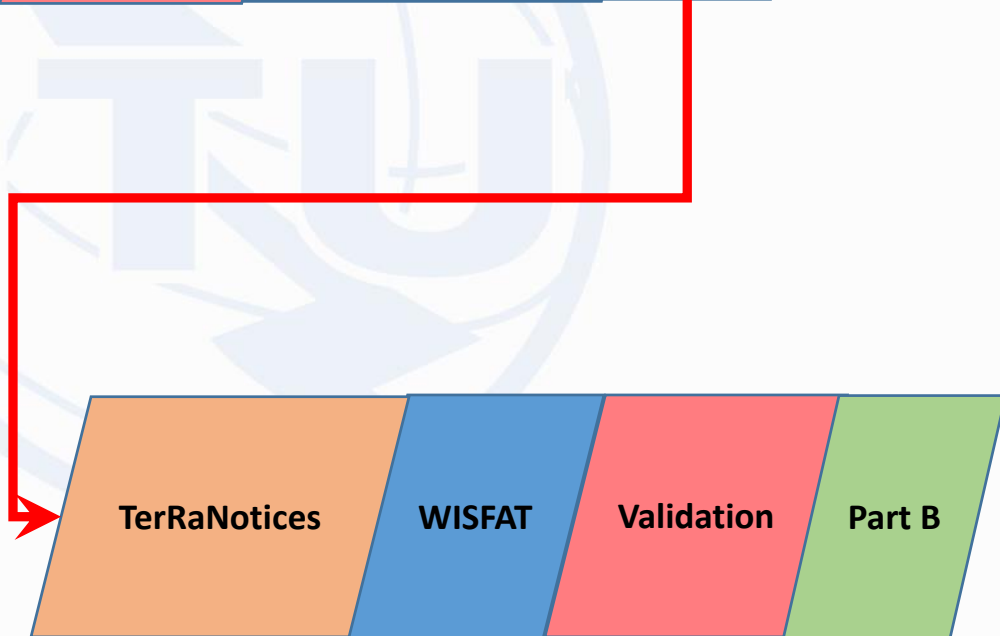
**Nos: 11.27 – 11.34**



# Processing of notices: Plans



**At the end of comments period and no objection, administration must submit a request for publication in Part B (TB3 or TB8)**



# Final Remarks

- **Notification has two aspects:**
  - ❑ Administration's obligation to apply the provisions of the Radio Regulations as it is an international treaty signed by all ITU Member States;
  - ❑ To claim for international recognition and rights.
  
- **One of the main purposes of the Master Register is to reflect the exact use of the radio spectrum in your territory;**
  
- **It also reflects the use of various frequency bands, this information is taken into consideration during World Radiocommunication Conferences (WRCs), when services are looking for new allocations;**
  
- **It is important to notify and also to consult the BR IFIC to be aware of what is happening with regards to the use of the international radio spectrum.**
  
- **Therefore, notification to the Bureau is very important.**



*Thank you for  
your attention!*

ITU – Radiocommunication Bureau  
Questions to [brmail@itu.int](mailto:brmail@itu.int) or [brtpr@itu.int](mailto:brtpr@itu.int)

12-16 December 2016, Geneva