

Presentation:

How to turn an E-waste Challenge into an Opportunity:

DATEC- Optimal Global Solutions to Global Challenges

Date: September 7th 2011 – Rome, Italy



Global Presence & Support

BELMONT
TRADING COMPANY



datec
Datec Technologies Ltd.

Elk Grove Village, IL
Northbrook, IL
Chicago, IL

Kristinehamn,
Sweden

Kilwinning,
Scotland

Hayward, CA

Bridgewater, NJ

Guadalajara,
Mexico

Bogota, DC
Colombia

Manaus, Brazil

São Paulo, Brazil

Singapore

datec
Datec Technologies Ltd.

About DATEC

Who are we?

Leading European Electronics Recyclers & Asset Management Company, servicing a wide range of clients from SMEs, medium sized OEMs, through to large Blue Chip Clients.

Our Mission

To “take back” electronics, subassemblies & components on the most responsible environmental way

Objective

DATEC Technologies offer bespoke solutions designed to maximise client revenue whilst minimising negative environmental impacts through long-term business relationships.

**datec**

Datec Technologies Ltd.

Business Solutions for ICT Products

Precious Metals
Recovery

Asset
Management

Resale and
Remarketing

Base Metals
Recovery

Plastic Recycling

Data Wiping

Parts Harvesting



BELMONT
TECHNOLOGY
REMARKETING

datec
Datec Technologies Ltd.

BELMONT
TRADING COMPANY

Environmental Excellence & Social Responsibility

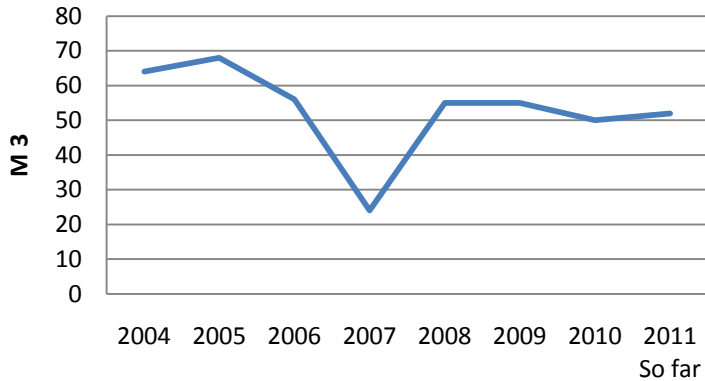


Our expertise is reflected on our capability to comply with environmental legislation from local to global according to each country specification; whilst enhancing our clients revenue by cutting cost and recovering value from redundant/excess/end-of-life electronics demonstrated to our customers.

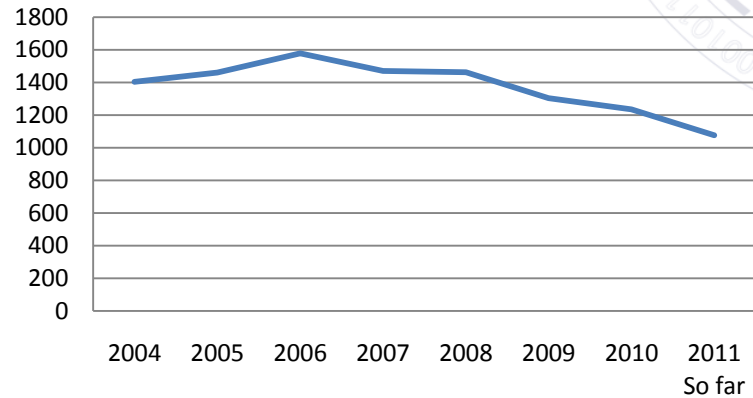


Environmental Performance

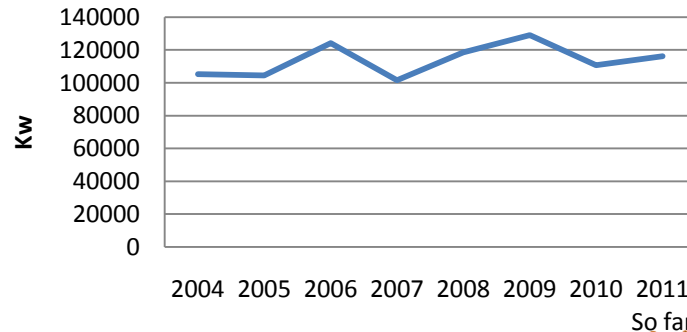
Water Consumption (Ave per year)



Electricity Consumption (Ave per year)



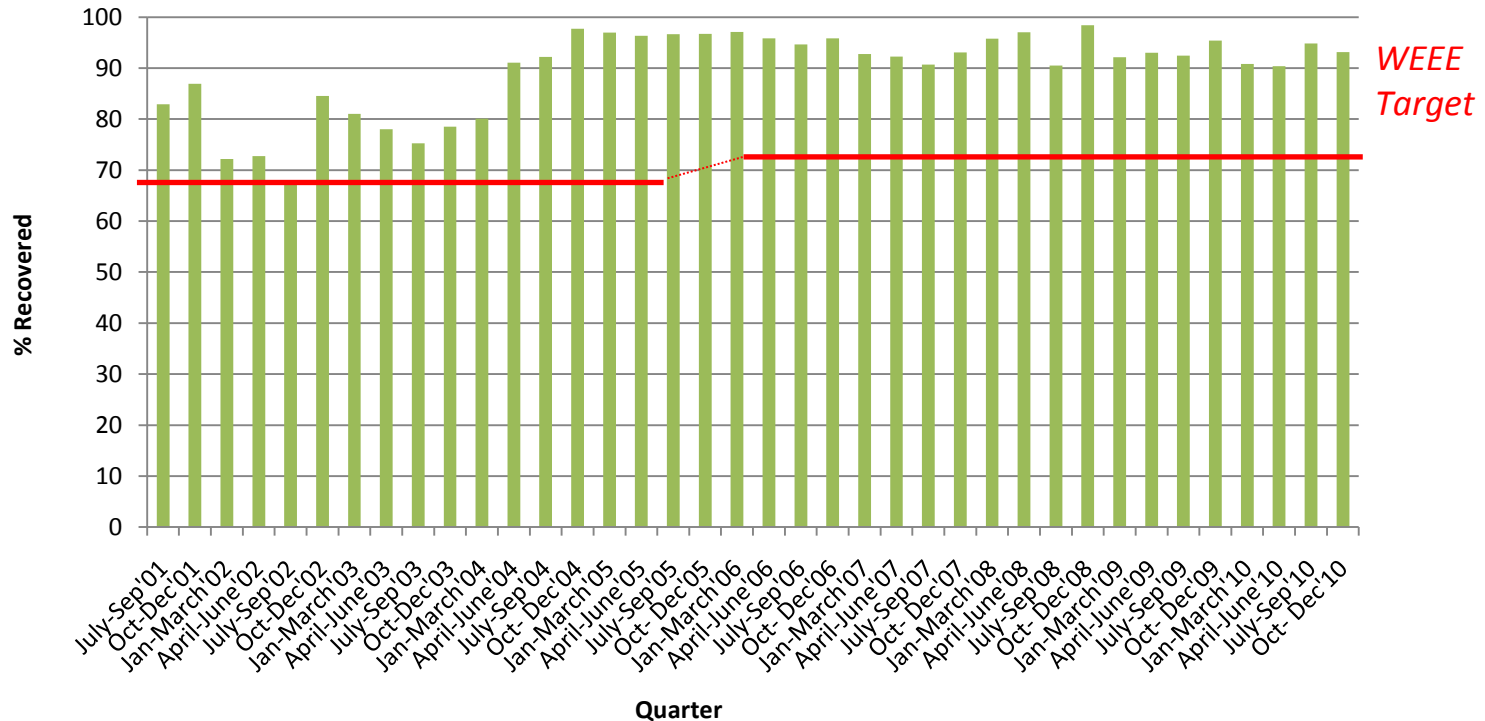
Gas Consumption (Ave per year)



Committed to Environmental Excellence!

Recovery Rates VS WEEE Directive

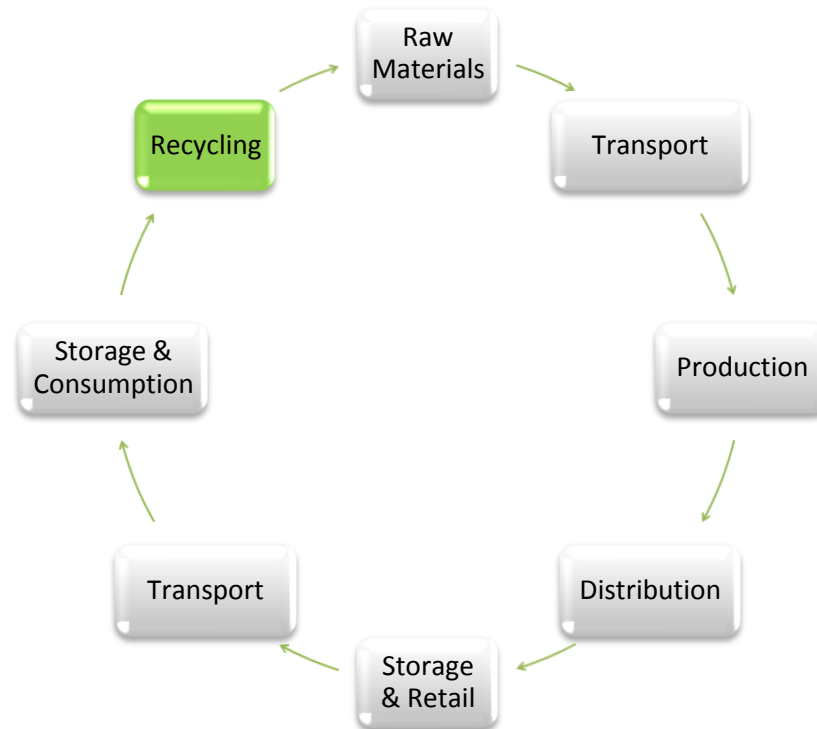
DATEC Recovery Rates



WEEE
Target

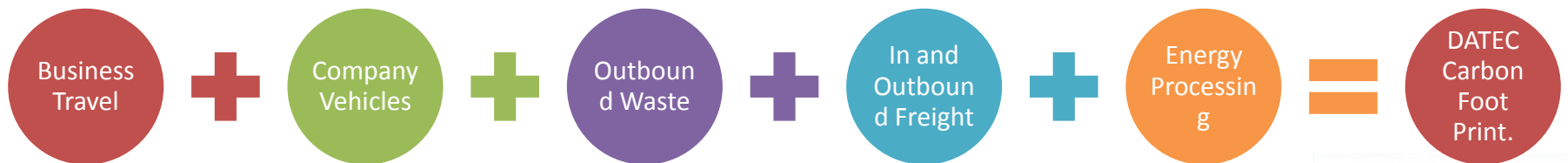
Environmental Excellence & Social Responsibility

The product life cycle is a series of 'direct footprints'
Large organisations wishing to carry out life cycle carbon footprints will need to look at the various stages in supply chain



Environmental Excellence & Social Responsibility

Why to calculate Carbon Foot Print?



CO2 Emissions Offsetting Possibilities



**Datec are working
to be able to offset the CO2
Emissions from
our customer**



**Offset the emissions where they are
generated**

datec

Datec Technologies Ltd.

End Of Life Management Challenges – Decisions & Opportunities

Do you know what your recycler is doing with your products?



**datec**

Datec Technologies Ltd.

What is your **phone** made of?



Calculation made on a New Generation mobile handset

datec

Datec Technologies Ltd.

What is your **Network** made of?

9.4Kg

Cable (1.41 Kg Copper)

3.4 Kg

Heavy PCB

131.5Kg

Steel & Shell

2.4 Kg

AlSiCuFe

134 Kg

Contaminated Al

15 Kg

Mixed IT

13.8 Kg

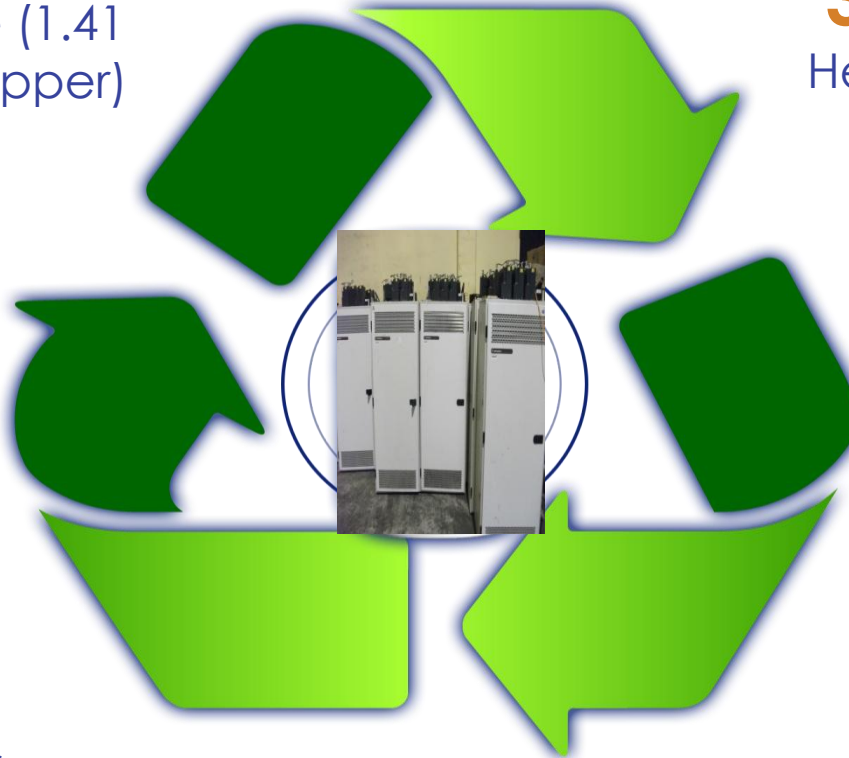
PCB - % Gold, Silver, Palladium + Plastics and other metals

7.2 Kg

Clean Al

5 Kg

Contaminated AlSiCuFe



Percentages calculated on a 200Kg Cabinet.

datec

Datec Technologies Ltd.

Do you know **Where** your material is going?



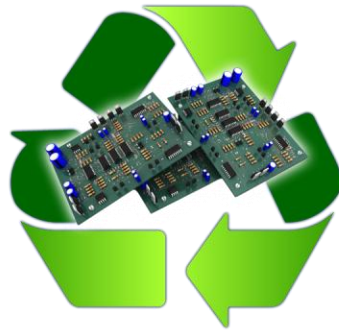
Batteries



Cobalt
Nickel
Copper



Batteries
Stainless steel
Aerospace
products
Magnets



Circuit boards



Gold
Palladium
Copper
Silver



Jewelry
Electronics
Plumbing
Plating Industry



Plastic Covers



Plastic



Electronics
Traffic cones
Car bumpers
Playground
Equipment



Packaging



Paper



Paper towels
and other paper
product


datec

Datec Technologies Ltd.

The **Challenges** of Environmental Services

- Import and Export of Waste
- Global reinforcement of legislation
- Participation on the development of local environmental laws and regional - global initiatives such as WEEE & Basel Convention (StEP)
- Information provision to support the development of policies, legislation and markets based on the evident economic cost of environmental actions.
- ISO 14001 & ISO 18001 must be part of the normal expectations for service providers.
- Support to the development of a CO2 Market through standardisation of measurement methods and helping to reflect the economic cost of emissions.

End of Life Management **Opportunities ...**

Towards a Sustainable Industry

Closing the loop

ICT Recycled materials can be use to generate brand new products within the Telecommunications industry or other products , to plumbing or even jewelry.

Introducing a responsible global supply chain management code by encouraging industry suppliers and other stakeholder's choices to be responsible and sympathetic to conflict-affected and high-risk areas, can:

- Avoid the rising demand on limited natural mineral resources,
- Support developing countries to raise economic growth through proactively respecting human rights and contributing to the care for environment.

A Sustainable Industry

The Organization of Economic Cooperation and Development, OECD introduced the *Due Diligence Guidance for Responsible Supply Chains of Mineral* as a voluntary proactive initiative

Reinserting recovered recycled precious and rare metals from unwanted ICT equipment to the supply chain, can also:

- Reduce the demand for rare metals on the manufacturing stage of ICT equipment.
- Ensure a clean supply chain and reduces the demand on limited natural resources, which is auditable, measurable and tractable.
- Reduce production costs of brand new products and the possibility of influence customer's purchasing power by offering a product that is verifiably conflict-free.

The logo for datec, featuring the word "datec" in a lowercase, sans-serif font. Above the letter "e" is a small graphic consisting of three red squares arranged in a 2x2 grid, with the bottom-right square missing.

Datec Technologies Ltd.

How to turn a **Challenge** into an **Opportunity?**

- Integrated efforts through products life cycle and by taking responsibility over all Life Cycle Stages
- Responsibly assuming our “Due To Care”
- Making responsible decisions regarding delegation of services
- Participation & Reporting
- Legislation reinforced globally
- Closing the loop!

How to turn a **Challenge** into an **Opportunity?**

An invitation to:

Get to know your service providers

Take full responsibility over waste management decisions and delegations

The logo for datec, featuring the word "datec" in a lowercase, sans-serif font. Above the letter "e" is a small graphic consisting of three red squares arranged in a 2x2 grid, with the bottom-right square missing.

Datec Technologies Ltd.



Thank You!
Grazie mille!

Laura Reyes

lreyes@datectech.co.uk

www.datectech.co.uk

The logo for datec, featuring the word "datec" in a lowercase, sans-serif font. Above the letter "e" is a small graphic consisting of three red squares arranged in a 2x2 grid, with the bottom-right square missing.

Datec Technologies Ltd.