

A Challenge

The 6000 days countdown



?%

African High School Graduates
who go to University?

8%

**African High School Graduates
who go to University?**

How many (undergraduate) universities, the size of Harvard, Would we have to build in Africa every year for the next 15 years, just to catch up with India's level of tertiary enrollment?

Facts:

Region/Country	Gross Tertiary Enrollment Rate (UNESCO)
Africa	8%
India	24%
USA	87%

- Current population of Africa is approximately 1.2 billion (World Bank)
- 200m youth in Africa aged between 15 and 24 (World Bank)
- Africa's population is growing at approximately 3% per year (will increase by 1.4billion by 2050)
- Harvard currently has about 6,700 undergraduate students

217

Universities per year

(4 universities/week)

#?

People in African workforce by

2035

1,000,000,000

People in African workforce by

2035

A Solution

The ALU Model

1 ALU IS ELIMINATING DRUDGERY FROM LEARNING

WE CENTER OUR ENGAGING LEARNING EXPERIENCES AROUND THE STUDENT

Traditional University



Main source of learning are Professors (PHDs) – who prefer research to teaching. As such, most lessons (one-way lectures) leave students disengaged

ALU



ALU's powerful learning experience is based on deep engagement, experiential learning, peer-to-peer-learning and student ownership. Lectures are essentially banned

2 BREAKING THE BOUNDARIES BETWEEN EDUCATION AND THE REAL WORLD

ALU STUDENTS SOLVE REAL WORLD PROBLEMS FROM DAY 1

Traditional University



Students live and learn in a “bubble” for 3-4 years with very limited contact with the “real world”

ALU



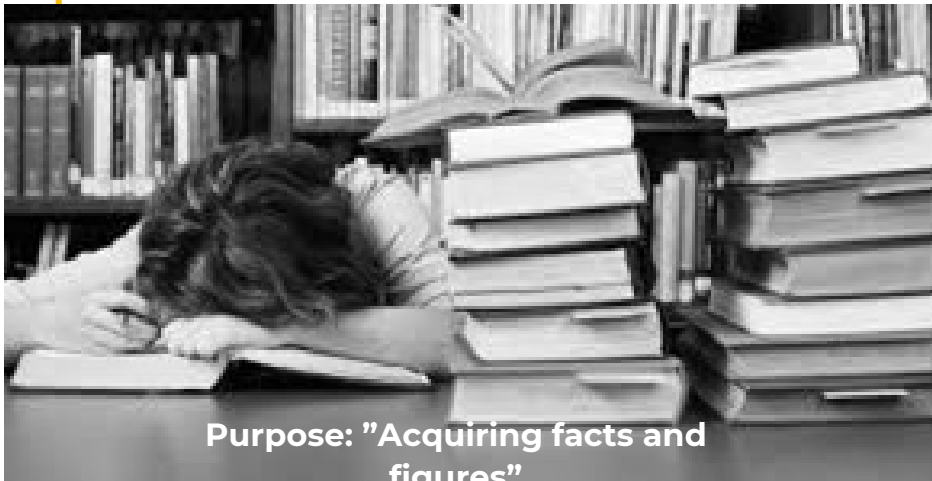
Students engage in real world projects and spend four months of each year in a mandatory internship (resulting in one year of work experience by graduation)



3 RETHINKING THE FUNDAMENTAL PURPOSE OF UNIVERSITY

ALU EQUIPS STUDENTS TO BECOME LIFELONG LEARNERS

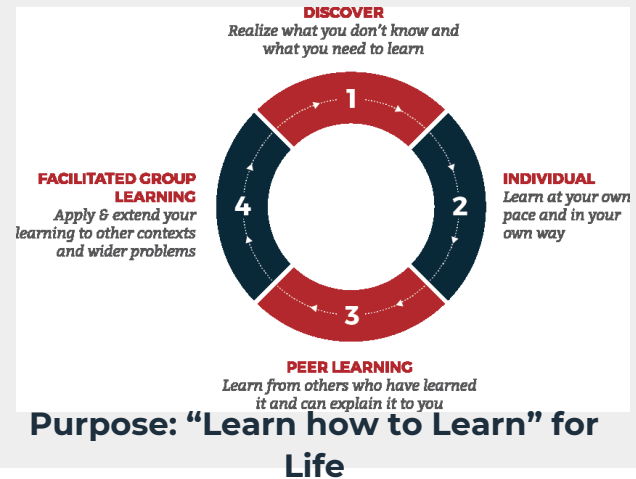
Traditional University



Purpose: "Acquiring facts and figures"

Transfer of knowledge is based in a time when **information was scarce** – Learning facts and figures "**Just in Case**" they become useful one day. These facts and figures are quickly forgotten and almost never used.

ALU



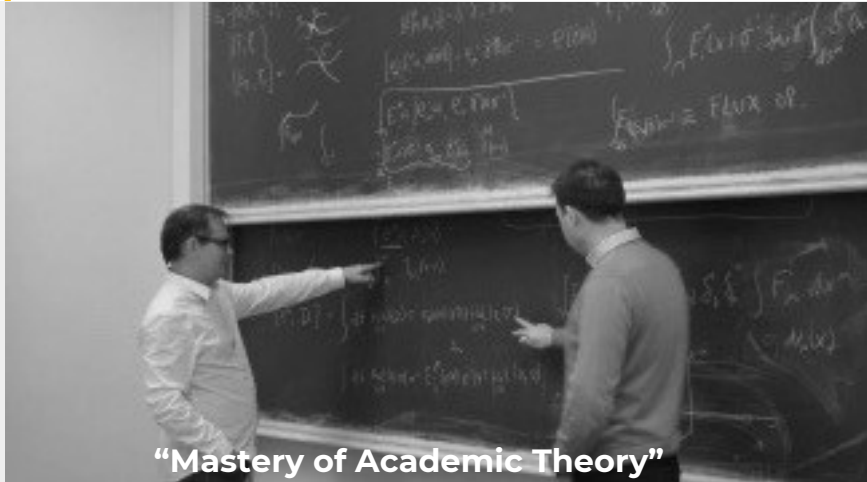
Purpose: "Learn how to Learn" for Life

Acquire tools and skills that enable you to **keep learning for the rest of your life**. In a world where **information is ubiquitous**, the 21st century graduate should know how to learn "**Just in Time**" to solve unanticipated problems as they arrive

4 MOVING AWAY FROM ACADEMIC THEORY TO SKILLS

WE INSTILL SKILLS IN OUR STUDENTS THAT WILL ALWAYS BE RELEVANT FOR THE JOBS OF TOMORROW

Traditional University



“Mastery of Academic Theory”

In a fast changing world, academic theory quickly becomes outdated. (Students have a 65% chance of entering a job which does not exist today)

ALU



5 WE ARE BREAKING THE SILOS BETWEEN ACADEMIC DISCIPLINES

ALU's INTERDISCIPLINARY "SCHOOLS" AIM TO SOLVE THE WORLD'S GREATEST PROBLEMS

Traditional University



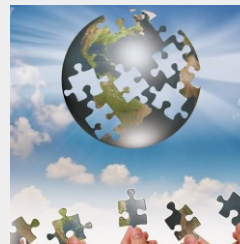
In earlier times, problems and systems were less complex and could be seen from a single lens. Traditional academic schools operated as "closed systems"

ALU

"Interdisciplinary approach"

Seven "Grand Challenges"

- URBANIZATION
- EDUCATION
- HEALTHCARE
- CLIMATE CHANGE
- GOVERNANCE
- JOB CREATION
- INFRASTRUCTURE



Seven "Great Opportunities"

- AGRICULTURE
- NATURAL RESOURCE MGMT.
- WILDLIFE CONSERVATION
- REGIONAL INTEGRATION
- ARTS, DESIGN AND CULTURE
- TOURISM
- EMPOWERMENT OF WOMEN

To solve today's big problems, an interdisciplinary approach is needed. ALU's "schools" aim to expose students to the various facets that need to come together to create large scale systemic change

6 MOVING AWAY FROM “ONE SIZE FITS ALL” TO PERSONALISED EDUCATION

OUR LEARNING EMBRACES THE FULL INDIVIDUALITY OF EVERY SINGLE STUDENT

Traditional University



ONE SIZE FITS ALL.

All students learn at same pace, same style, same content, same level. Students are forced to choose from an outdated, predetermined menu of courses which often have very little to do with their individual passions

ALU



Ownership

Students fully own their learning, growth and personal development

Individualized learning

Students learn at their own pace and proficiency levels

Each student declares their own life “mission” and then curates their learning around a “grand challenge” or “great opportunity” they want to solve. This would be akin to how PHD-students define their own question and build knowledge around their question/challenge

7 ELIMINATING WASTE IN REAL-ESTATE

ALU CAMPUSES MAKE HYPER-EFFICIENT USE OF PHYSICAL SPACE

Traditional University



200 sqm/
student

Traditional universities only use approx. 50% of their space due to long breaks (up to 6 months) and spaces like auditoriums and stadiums are only used on special occasions. In the digital word, large libraries are empty. Class-based instruction also increases space requirements

ALU



20 sqm /
student

ALU's Learning Model which is delivered through a mixture of online and in-person experience requires far fewer classrooms. We have digital libraries. Our 24/7, 365 days a year approach enables ALU to house the same number of students for 10% of the space



8 REDUCING THE PRICE OF WORLD-CLASS EDUCATION BY A FACTOR OF 10

ALU PROVES THAT QUALITY EDUCATION MUST NOT COST A FORTUNE

Traditional University



Tuition: \$120k for 4 years

High cost base (due to professors, research, real estate, expensive learning model, no efficiencies of scale etc.) is passed on to students

ALU



Tuition: \$12k for 3 years

ALU's degrees are shorter (due to reduced holidays). In addition, ALU saves cost through its innovative learning model, faculty model, real estate and use of technology. Scale further spreads costs across multiple campuses

9 OVERCOMING THE UNSUSTAINABILITY OF STUDENT FINANCE

ENABLING ACCESS FOR EVERY TALENTED STUDENT THROUGH INNOVATIVE EDUCATION FINANCE

Traditional University



Government Funding



Family Money



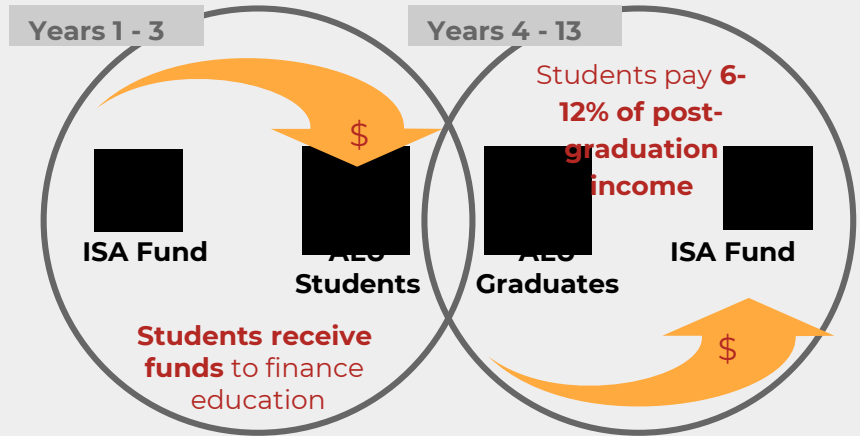
Student-Loans



Philanthropy

Conventional methods of student finance are not sustainable and result in excessive stress on students, their families and governments

ALU



Income Share Agreements are not loans. They are a flexible financing mechanism that enables students to exchange a portion of their future earnings for education today. Repayments adjust to a graduate's income level and stop after a defined period

10 MOVING AWAY FROM A MINDSET OF SCARCITY TO ONE OF ABUNDANCE

ALU's SCALE CAN EDUCATE MILLIONS OF HIGH PERFORMING INDIVIDUALS GLOBALLY

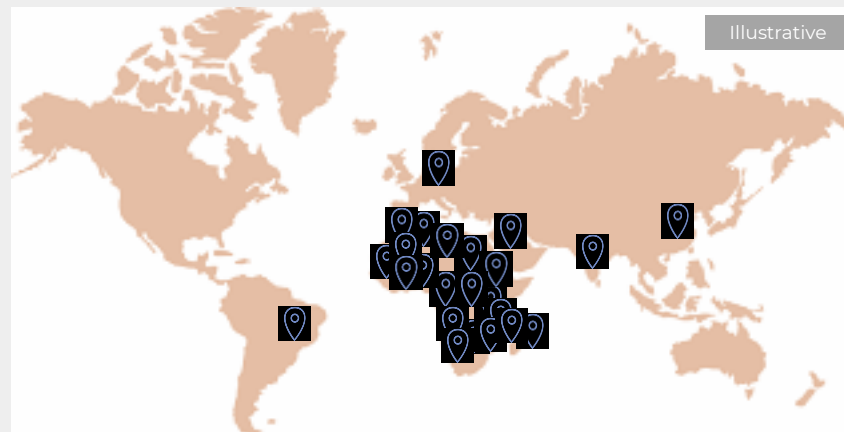
Traditional University



"One and only"

Traditional top universities have hardly increased their intake over centuries – yet the number of qualified candidates has ballooned globally. This has kept world-class education exclusive to an increasingly small number of (privileged) students

ALU



"At least 25 Campuses across Africa and beyond"

ALU will keep expanding as long as there is demand from suitably qualified candidates. We believe that the world's most talented individuals must be given a chance to realize their full potential. Our vision is to educate at least 3 million leaders by 2060

Thank you!