

# ITU Academy

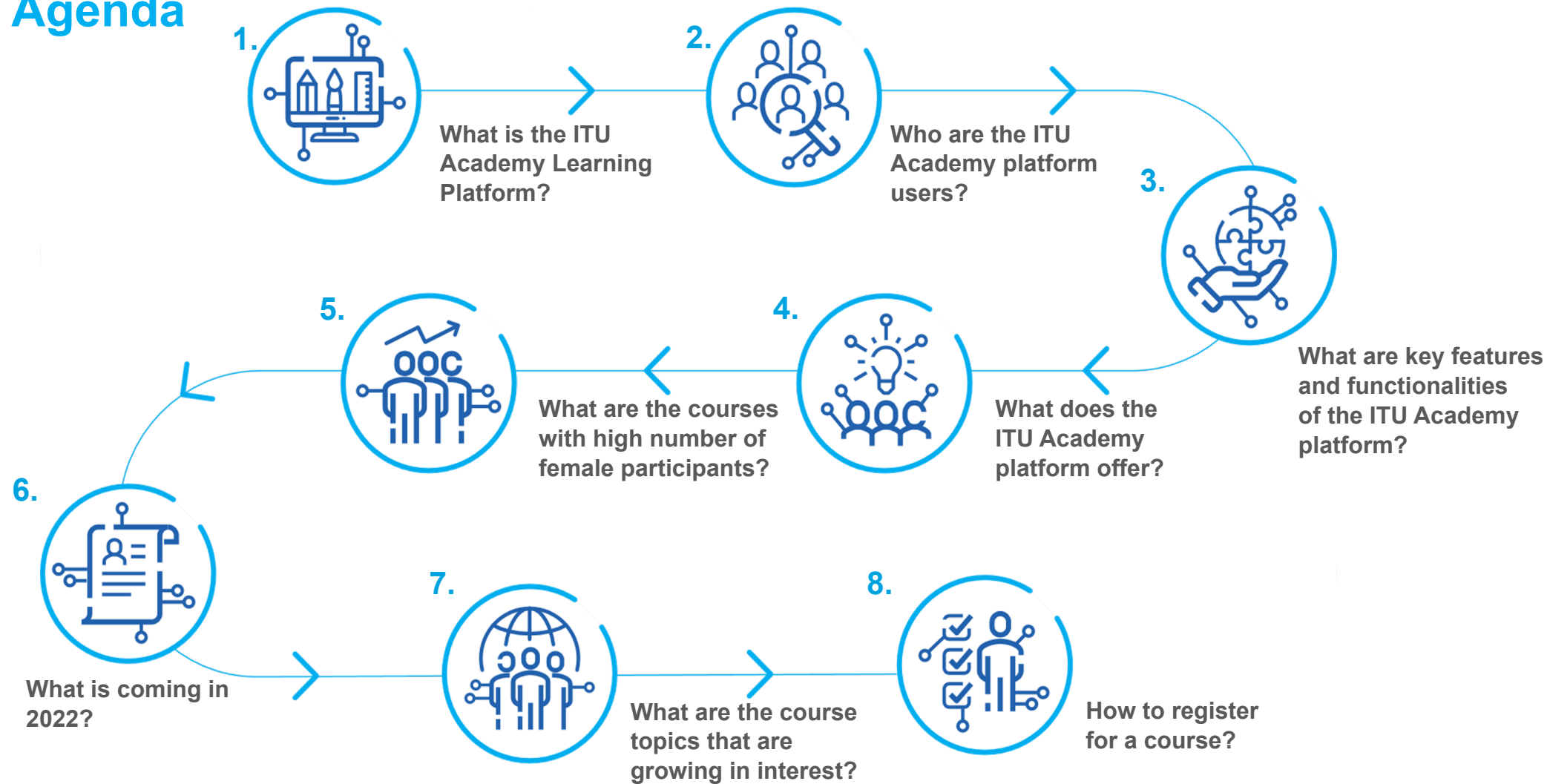
*Empowering minds*

ITU Academy Learning Platform



Network of Women (NoW4WTDC) Fireside Discussion  
“How can ITU serve our membership?”

## Agenda





## What is the ITU Academy Platform?

The ITU Academy is ITU's online platform for learning and training in the field of digital development



It features a fully-fledged online learning environment equipped with the latest tools for design and delivery of online courses



It also provides information on ITU's activities in the field of capacity development



It's constantly evolving e-learning platform aims to optimize the learning experience for its users.





## Who are the ITU Academy Platform users?

The ITU Academy is **open to all who are interested in developing their capacities and skills in the field of ICT and digital development.**


Majority of learners come from **membership sectors such as regulators, operators and telecoms**



### **WOMEN and YOUNG GIRLS**

are among the top growing learners of the platform

## ITU Academy Platform is user friendly, accessible and flexible



Offers a variety of tools such as H5P, Zoom integration, chats, forums, gamified activities, various quiz formats



Courses are designed to be accessible by all people, including by persons with disabilities

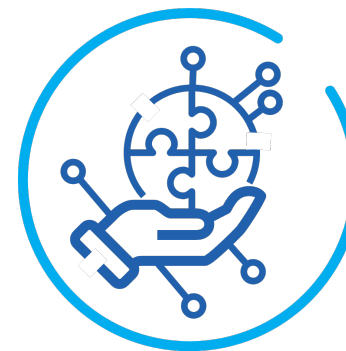


Includes a personalized learner dashboard with academic calendar



Multi-lingual interface available for learning content in different languages

## ITU Academy Platform is user friendly, accessible and flexible



### Responsive platform:

Working women can access the platform via their mobile or tablet devices, if no immediate access to a computer is available.



### Low bandwidth:

For women who have no access to high-speed Internet, materials can be accessed or used offline.



### Women only:

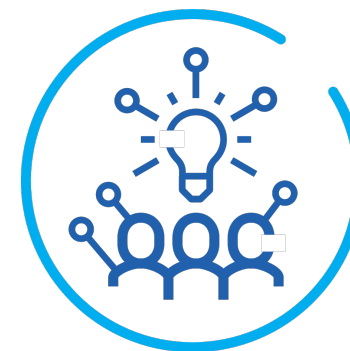
Certain courses are safe spaces only for women to express their ideas thanks to our application function.



### Stories & Testimonials

We feature successful female participants on our testimonial pages in an effort to encourage others





## What does the ITU Academy platform offer?

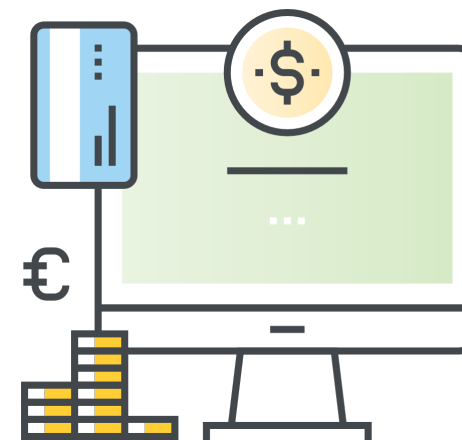
Trainings available on **ICT related and emerging topics**

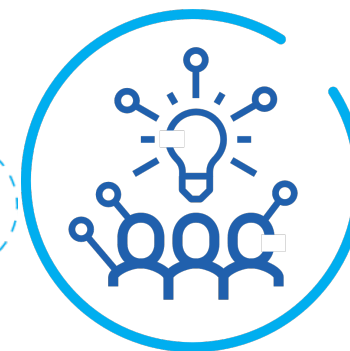
**Self-paced and free courses** running throughout the year

**Certification/badging** upon successful completion

**Constantly evolving platform** that aims to optimize the learning experience for its users

Concrete opportunity to **foster digital inclusion for women**

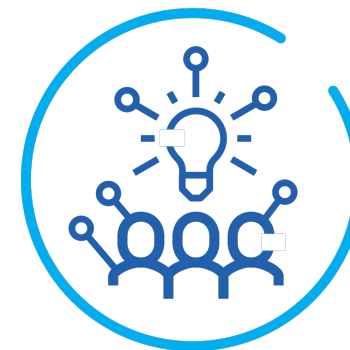




## Courses with high number of female participants

- Management Skills for Women Entrepreneurs in Tech (Women only)
- Liderazgo femenino en el Sector de las telecomunicaciones y las TIC: Del básico a las tendencias del sector (Women only)
- ICT Accessibility (mix)
- WHO-ITU Digital Health Leadership training (mix)
- Innovation ecosystem 101: Fundamentals on building competitive and innovative ICT-centric ecosystems (mix)
- Incubation 101: training for incubators and accelerators - creation and management basics (mix)

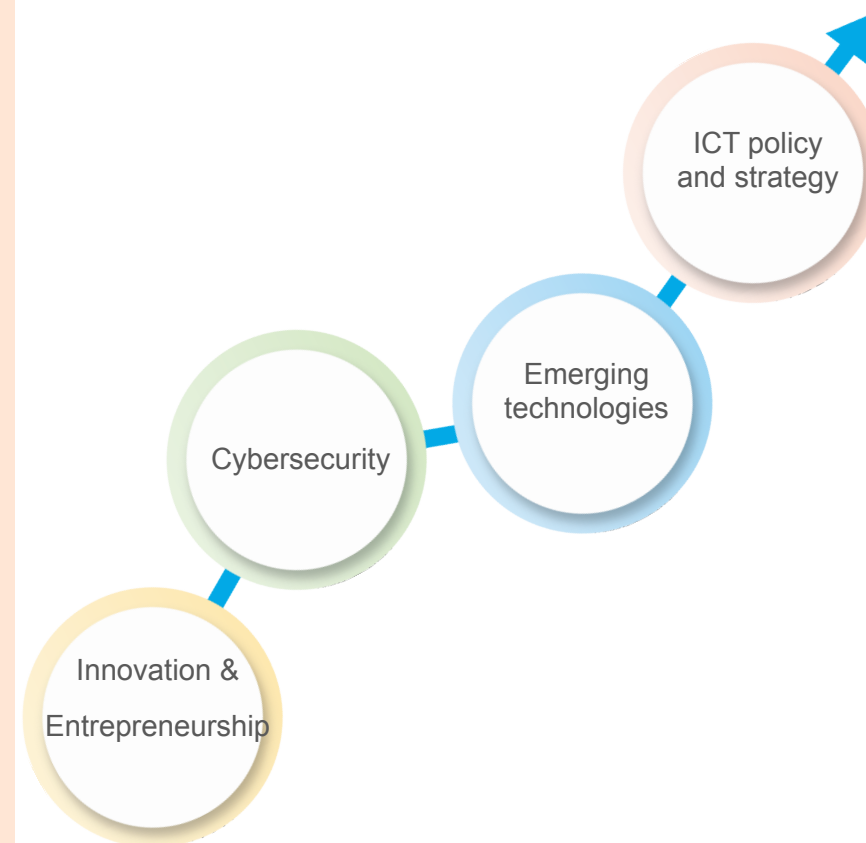


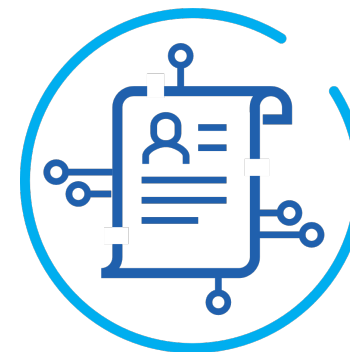


## What's coming in 2022?

- ITU Academy will be integrating EQUALS Badge, an online foundational digital skills training & certification program for **girls and young women aged 16-25 years**. It will provide gender-transformative digital skills courses free of charge. It will offer a modular-based program consisting of a mix of mandatory and optional digital skills training modules and will allow for self-paced learning.
- ITU Academy will be integrating **African Girls Can Code Initiative**. ITU Academy will focus on customizing courses that equip the initiative's beneficiaries with digital skills for future employment and education.

## Course topics with growing demand from female applicants

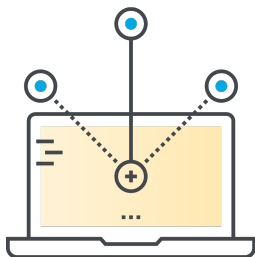




## How to participate?



- Access to the ITU Academy is open to anyone
  - ✓ To register and attend a course, users must have an ITU Academy account



- Registration
  - ✓ To open an account all users must visit and fill in the online form <https://academy.itu.int/user/register>



**THANK YOU!**

For more information, contact [Hcbmail@itu.int](mailto:Hcbmail@itu.int)