



Connect2Recover

Building back better with broadband

Sameer Sharma, ITU

26 May 2021

COVID-19 has caused unprecedented disruption in countries around the world and has highlighted the urgency for universal digital connectivity.

- **Education:** 2.2 billion children and young people unconnected and as COVID-19 has spread across the globe, most countries announced temporary closure of schools, impacting 91% students worldwide – around 1.6 billion children and young people.
- **Jobs:** Unprecedented global employment losses in 2020 of 114 million jobs, higher for women (5 %) than for men, and for young workers (8.7%)
- **Health:** Confirmed COVID-19 cases worldwide surpassed 165 million, with over 3.4 million deaths. Focus on continued availability of health services during movement restrictions , other social and public health measures to contain the spread of COVID-19

COVID-19 has highlighted that **digital infrastructure is not just a convenience but an essential requirement** for fully-fledged participation in society and the economy. Broadband connectivity has proved vital in helping countries' businesses and citizens adapt and respond to the pandemic, enabling them to access the latest health information and continue working, learning and socializing remotely.



— OBJECTIVE —

Connect2Recover seeks to **expand access to affordable and reliable connectivity** in beneficiary countries as they adjust in the wake of COVID-19.



Connect2Recover

Building back better with broadband

Education

Health

Jobs

Objective

Expand access to affordable and reliable connectivity in beneficiary countries as they adjust in the wake of COVID-19

Focus Area

Identifying gaps and bottlenecks in the use of digital networks and technologies

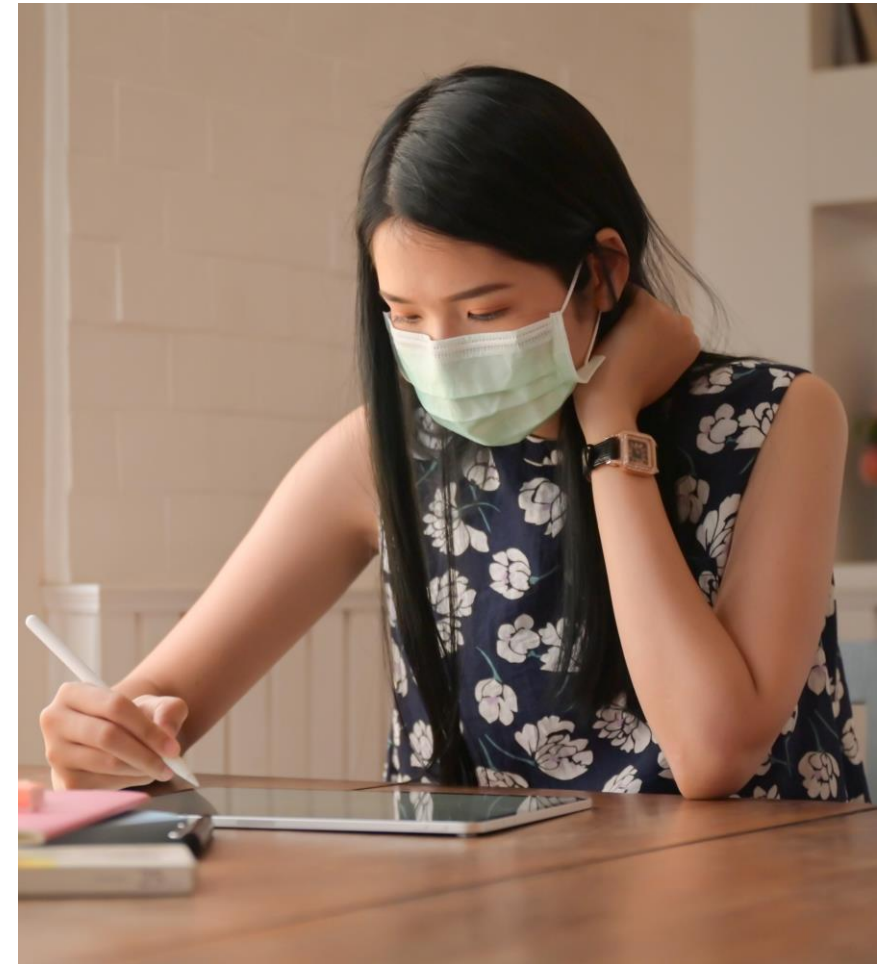
Digital infrastructure and ecosystems adequately support recovery efforts and the “new normal”

Pilot projects to test specific technological solutions in line with national country strategies & policies

Regions

Africa
Asia-Pacific
CIS , Arab
Americas

Founding Partners



Priority Selection Criteria for Beneficiary Countries

- LDC/ LLDC / SIDS Countries and inclusion of vulnerable groups
- Impact on Education, Health, Employment/Job Creation
 - For Education: synergies with [ITU/UNICEF Giga Initiative](#)
 - For Health: synergies with [ITU/WHO Be He@lthy, Be Mobile Initiative](#)
 - For Employment/Jobs: synergies with [ITU/ILO/AU Program on Decent Jobs and Digital Skills](#)
- Collaboration with Ministry of ICT / Education/ Health etc
- Partnership with relevant UN Agencies through UN Country Team (UNCT)
- Pilot Project for quick wins and potential for scalability

Connect2Recover : Deliverables in Five Phases



Phase One

- **Global Methodology:** Developing a methodology for identifying gaps and bottlenecks at a country level for the utilization of networks and digital technologies and identify policies to respond to and mitigate the consequences of COVID-19 pandemic (including the recovery following the pandemic, readiness for the 'new normal' and well as preparedness for any future pandemics).

Phase Two

- **Country Landscape Assessments:** On the basis of the Global Methodology, conduct country landscape assessments on the state of a country's connectivity data collection, network resiliency, and digital strategies.

Phase Three

- **National ICT Strategies:** Based on the country landscape assessments, work with member states to develop, update, and effectively implement comprehensive ICT strategies to ensure that digital infrastructure and ecosystems adequately support recovery efforts as well as the 'new normal', in line with global best practices, as well as with other relevant policy tools developed by ITU, as well as other relevant organizations.

Phase Four

- **Pilot Activities:** On the basis of identified country needs, conceptualize and implement pilot activities to test specific technological solutions in line with national country strategies and policies, with a particular focus on education, health, and job creation. These pilots can also be used to inform policy making.

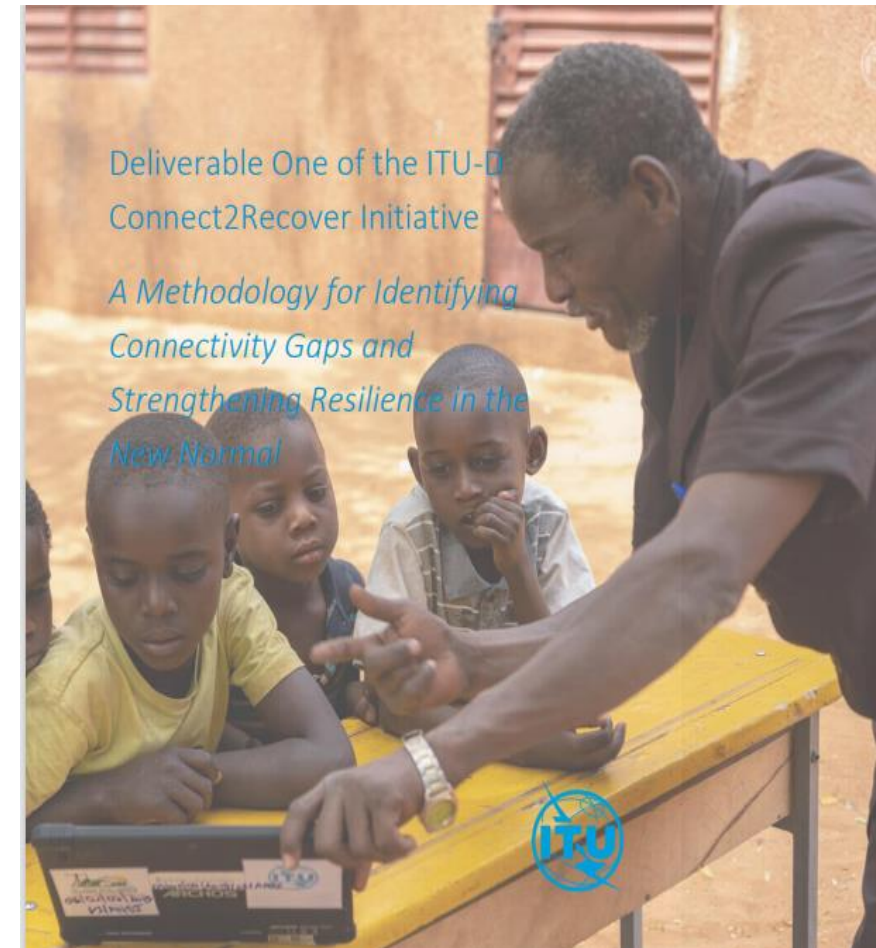
Phase Five

- **Deep-Dive Studies.** Undertake deep-dive studies in specific areas of digital policy as prioritized by the countries selected (*e.g.*, in areas such as e-education, e-health and job creation).

New Report on Methodology for Identifying Connectivity Gaps and Strengthening Resilience in the New Normal

C2R Methodology

- ✓ Developing a methodology for assessing a country's internet resilience, identifying gaps, and developing policy/regulatory recommendations
- ✓ Efficient utilization of broadband networks and digital technologies to respond to and mitigate the consequences of COVID-19 pandemic
- Report as basis for [Connect2Recover](#) deliverables 2 (Country Landscape Assessment) and 3 (National ICT Strategies)
- Planned Release: [June 2021](#)



Connect2Recover

Opportunities to get involved

- i. Financial contribution to support the initiative for extending connectivity to unserved and underserved communities
- ii. Provide in kind contribution offering expertise, sharing best practices and capacity building to beneficiary countries
- iii. Beneficiary countries from LLDC, LDCs and SIDS to join [Connect2Recover Initiative](#)





Join the Connect2Recover initiative at:
Sameer.sharma@itu.int



#Connect2Recover