



Online Workshop on the Role of Telecommunications/ICTs for Disaster Risk Reduction and Management for the Americas

14th – 16th September 2021



IMPORTANCE OF PARTNERSHIPS FOR DISASTER RISK REDUCTION (DRR)

16th September 2021

Briefing Agenda

CDEMA – Who are we?

RRM – Regional Response Mechanism

ICT for DRR & DM advanced through Partnerships

2022 and Beyond

Who is CDEMA?

Caribbean Disaster Emergency Management Agency

- ❖ Regional inter-governmental agency responsible for disaster management in the Caribbean Community (CARICOM).

Mobilise and coordinate disaster relief

Mitigate or eliminate the immediate consequences of disasters

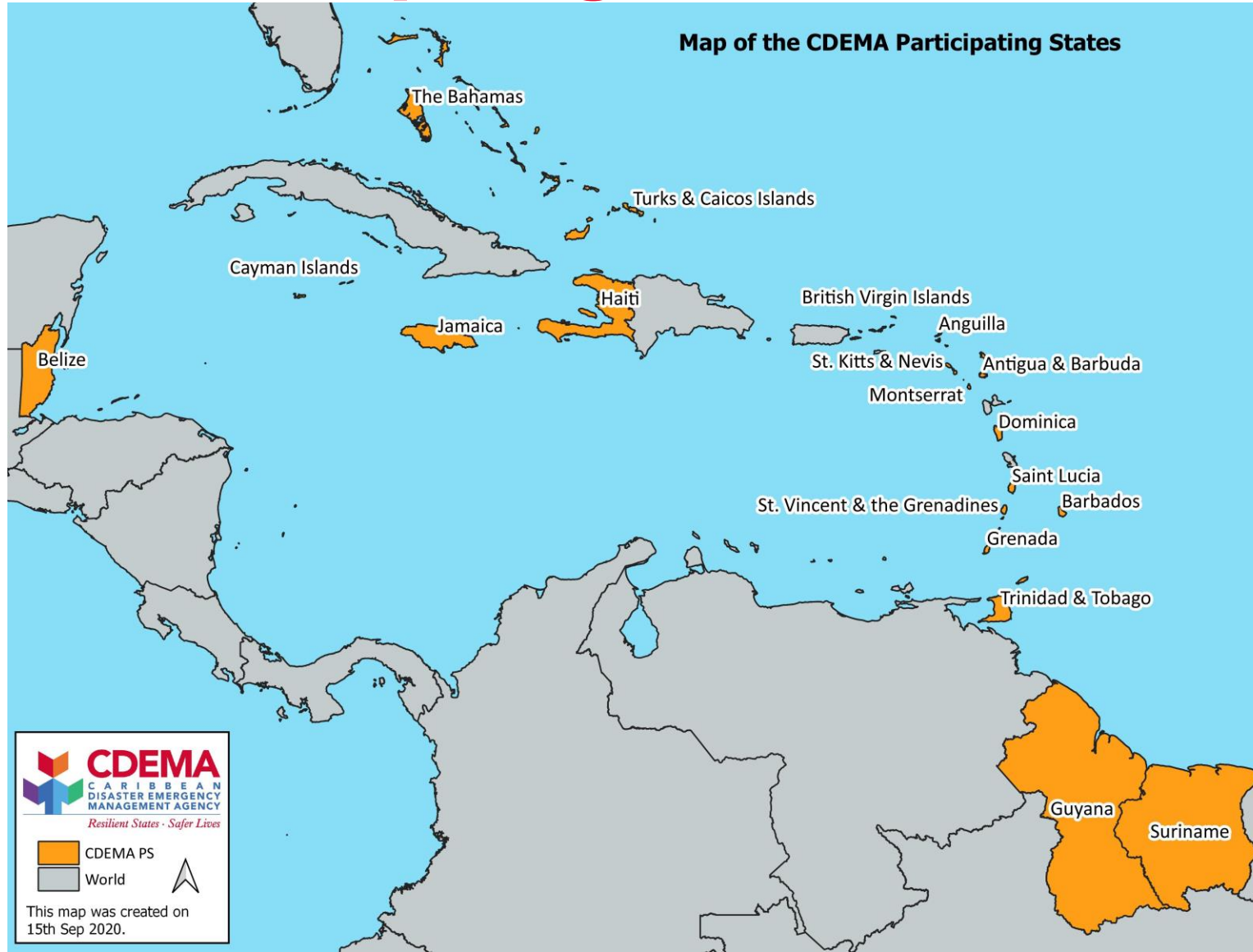
Secure, coordinate and provide reliable and comprehensive information on disasters

Encourage disaster loss reduction and cooperative arrangements and mechanisms

Establish, enhance and maintain adequate emergency disaster response capabilities



CDEMA's Participating States



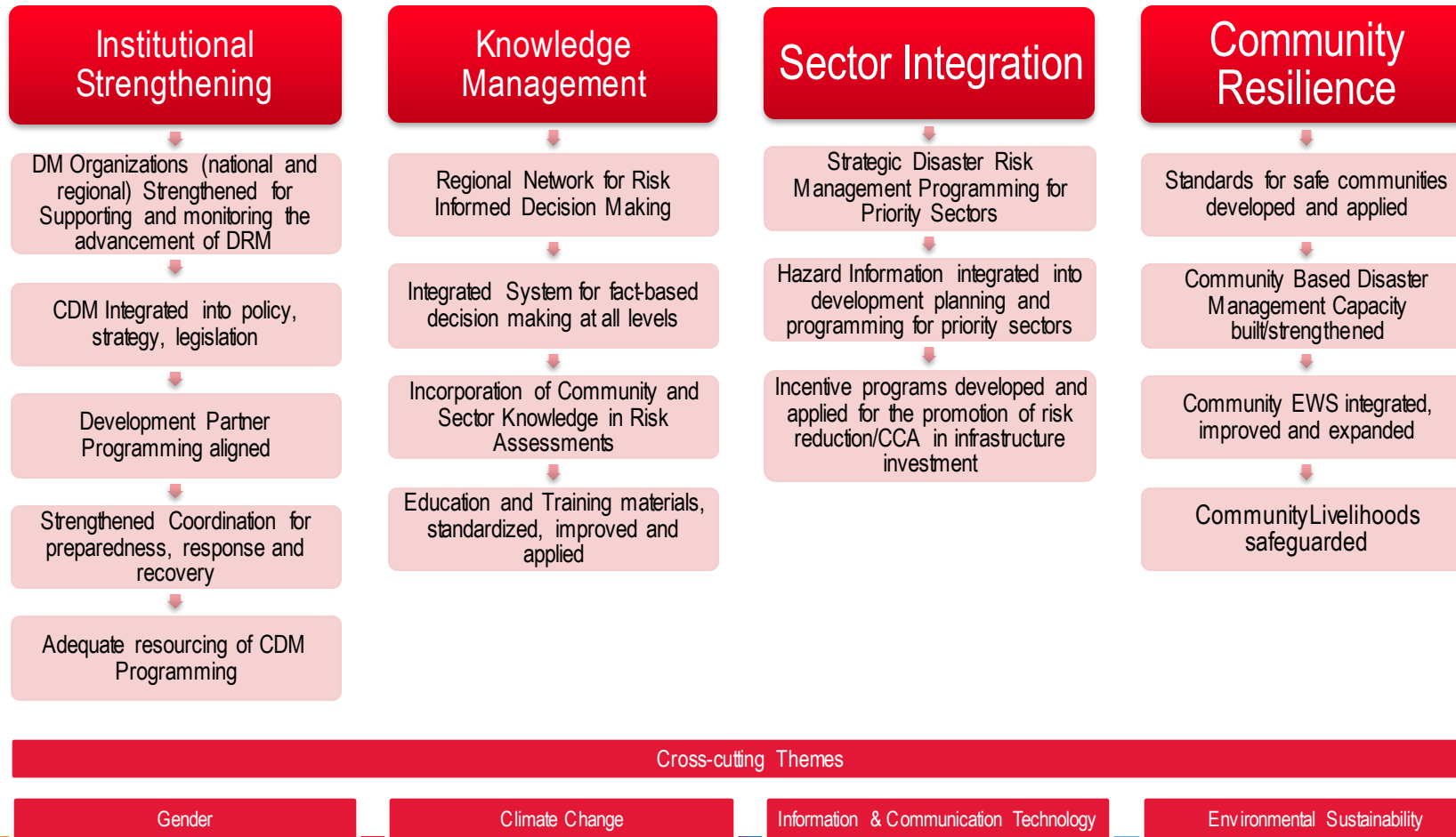
Comprehensive Disaster Management (CDM)



- ▶ **CDM** is the management of **all hazards**
- ▶ through **all phases** of the disaster management cycle
- ▶ by **all peoples** public and private sectors, all segments of ***civil society*** and the general population
- ▶ CDM involves **risk reduction & management** and
- ▶ **integration of vulnerability assessment** into the development planning process

THE CDM STRATEGY 2014-2024

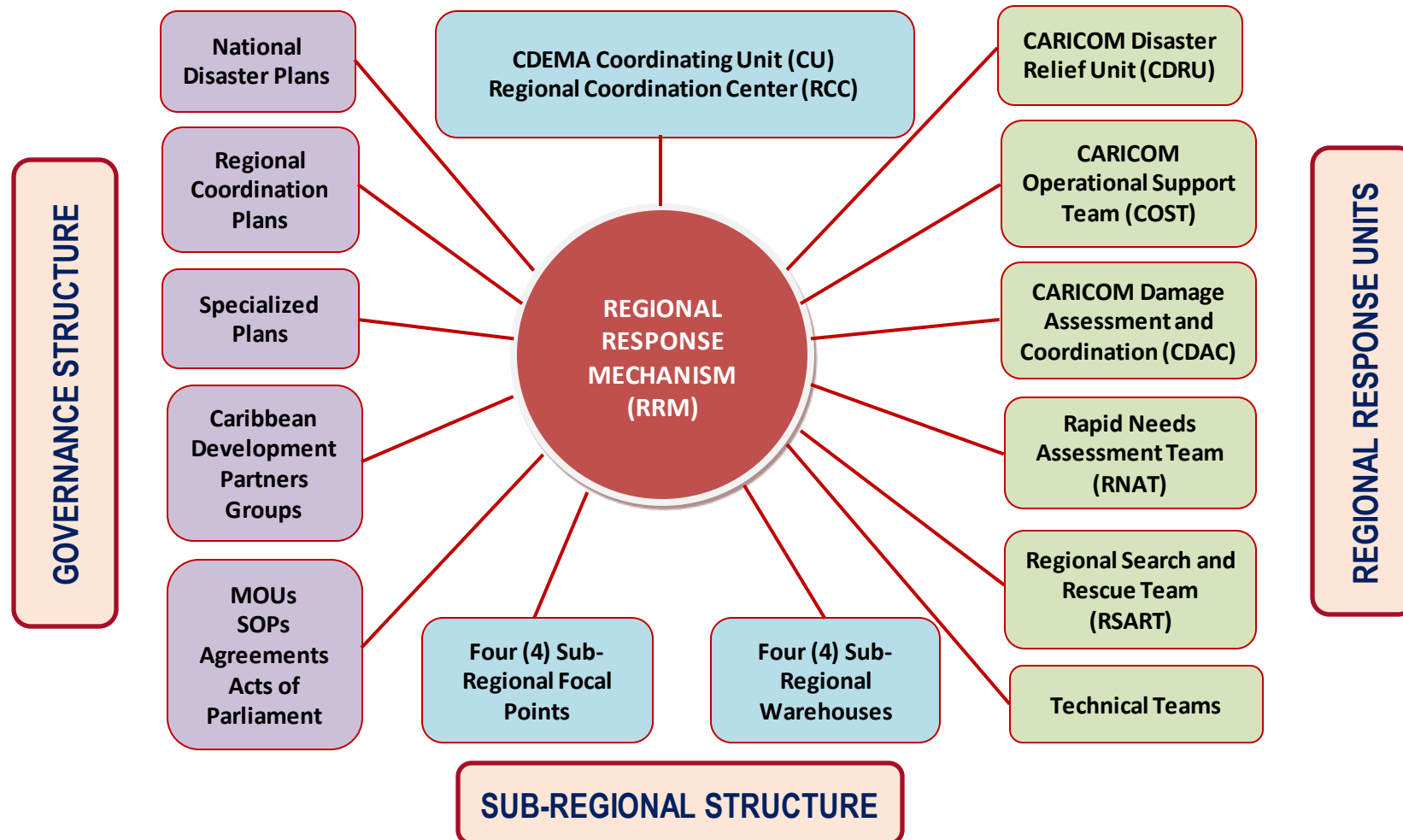
Regional Goal: Safer more resilient and sustainable Caribbean States





THE REGIONAL RESPONSE MECHANISM (RRM)

Conceptual Framework for the RRM





ICT

Partnerships – Telecommunications/ICTs for DRR and DM



EMERGENCY TELECOMMUNICATIONS

❖ Emergency Telecommunications Training

- Establishment of the CETT (CARICOM Emergency Telecommunications Team)
- Strengthen technical capacity of ICT responders.
- Deploy emergency telecommunication technologies used in emergency operations



emergency.lu

Emergency Telecommunications



ICT SOLUTIONS

❖ Caribbean Risk Information System (CRIS).

- GeoCRIS



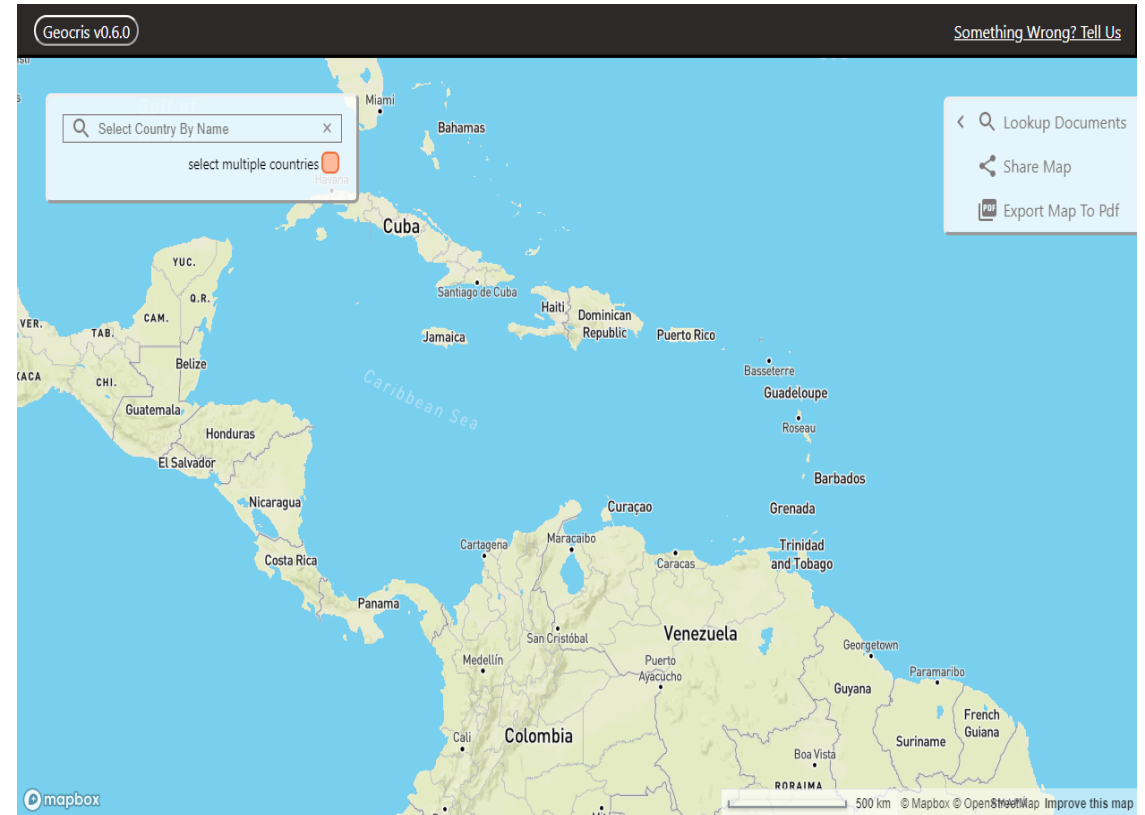
❖ CDEMA Logistics System (CLS)

- Provides a means to coordinate and manage emergency logistics processes digitally



GEOCRIS

- ❖ Geospatial component of the Caribbean Risk Information System
- ❖ Provides access to geospatial data required for risk and hazard mapping
- ❖ Used for disaster preparedness and response operations.
- ❖ Partnership with World Bank Development).
- ❖ Partnership with MapAction & OCHA (Training).

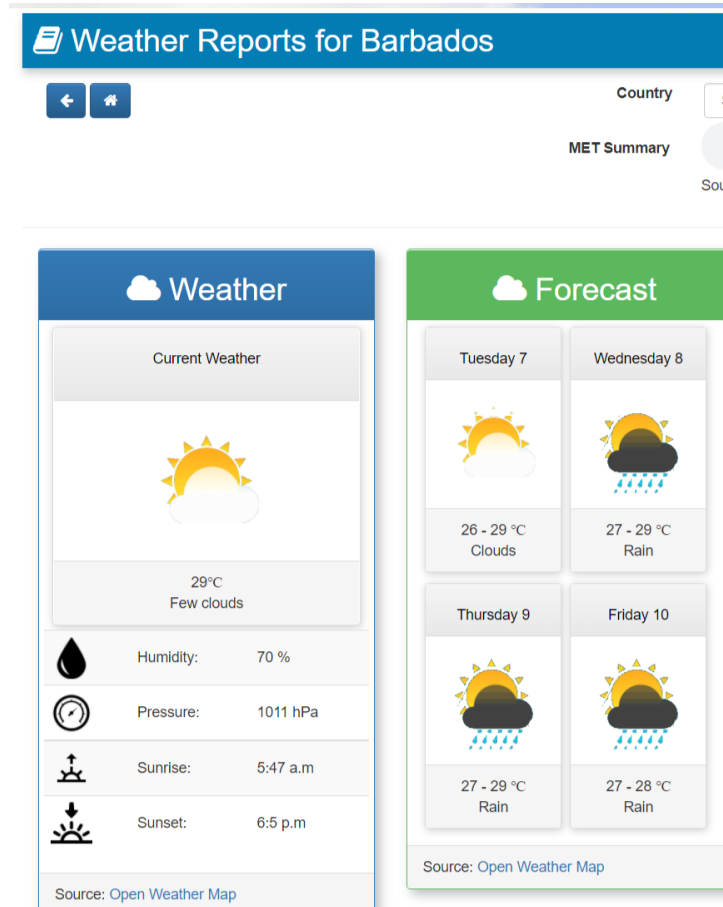
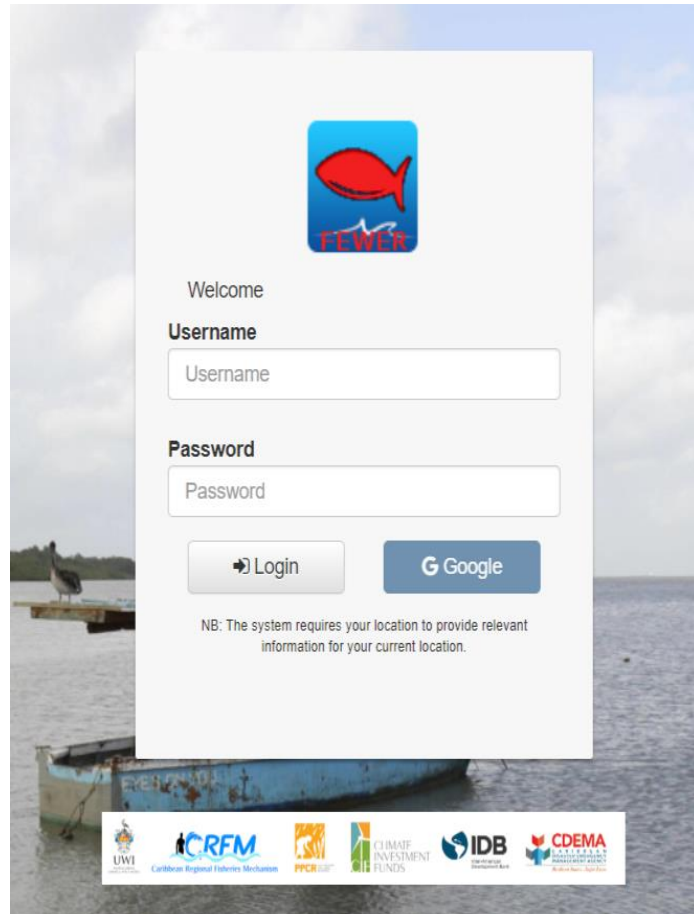


CDEMA LOGISTICS SYSTEM (CLS)

- ❖ Designed to allow CDEMA to effectively coordinate and manage regional supply chains.
- ❖ The CLS platform enables visualisation of stocks and logistics capacities to coordinate and manage emergency logistics processes digitally.
- ❖ Used within the Integrated Regional Logistics Hub to Coordinate distribution of PPEs and La Soufriere Volcano Response.



FEWER - Fisheries Early Warning and Emergency Response System (<https://ewer.fish>)



- ❖ EWS application for Fishing Community
- ❖ Android-based App
- ❖ Developed for Caribbean Regional Fisheries Mechanism (CRFM)

2022 AND BEYOND FOR CDEMA

❖ **Emergency Telecommunications**

- Continue to strengthen and expand redundancy in the communication systems that support national and regional response.
- Usage of LTE-based communication for in-country response.
 - Requires clear guidance on spectrum usage and availability

2022 AND BEYOND FOR CDEMA

❖ **Drones (formal inclusion)**

- Situational Awareness
- Map production
- Search and Rescue

❖ **GeoCRIS**

- Mobile data collection for DANA
- Formalisation of Data Sharing Agreements & Relationships
- Re-design and development of the Databases component of the CRIS
- Geolocation of Social Media Hashtags on Disasters

