

# SSDM Initiative

Eng Mustafa Al Mahdi

Telecommunication Development Bureau  
International Telecommunication Union



**SMART**  
**SUSTAINABLE DEVELOPMENT**  
MODEL INITIATIVE



## SSDM Initiative Objectives:

- The SSDM approach to ICT4D and ICT4DM will: Better harness the potential for ICT and its likely future roadmaps in both development and disaster management.
- Identify, share and transfer best practices in each sector worldwide.
- Optimize the use of scarce resources.
- Encourage planning and co-ordination at national and intergovernmental levels for ICT4D and ICT4DM that takes account of dual-use deployments.
- Encourage stakeholders to work together for sustainable development and to avoid duplication



**SMART**  
**SUSTAINABLE DEVELOPMENT**  
MODEL INITIATIVE







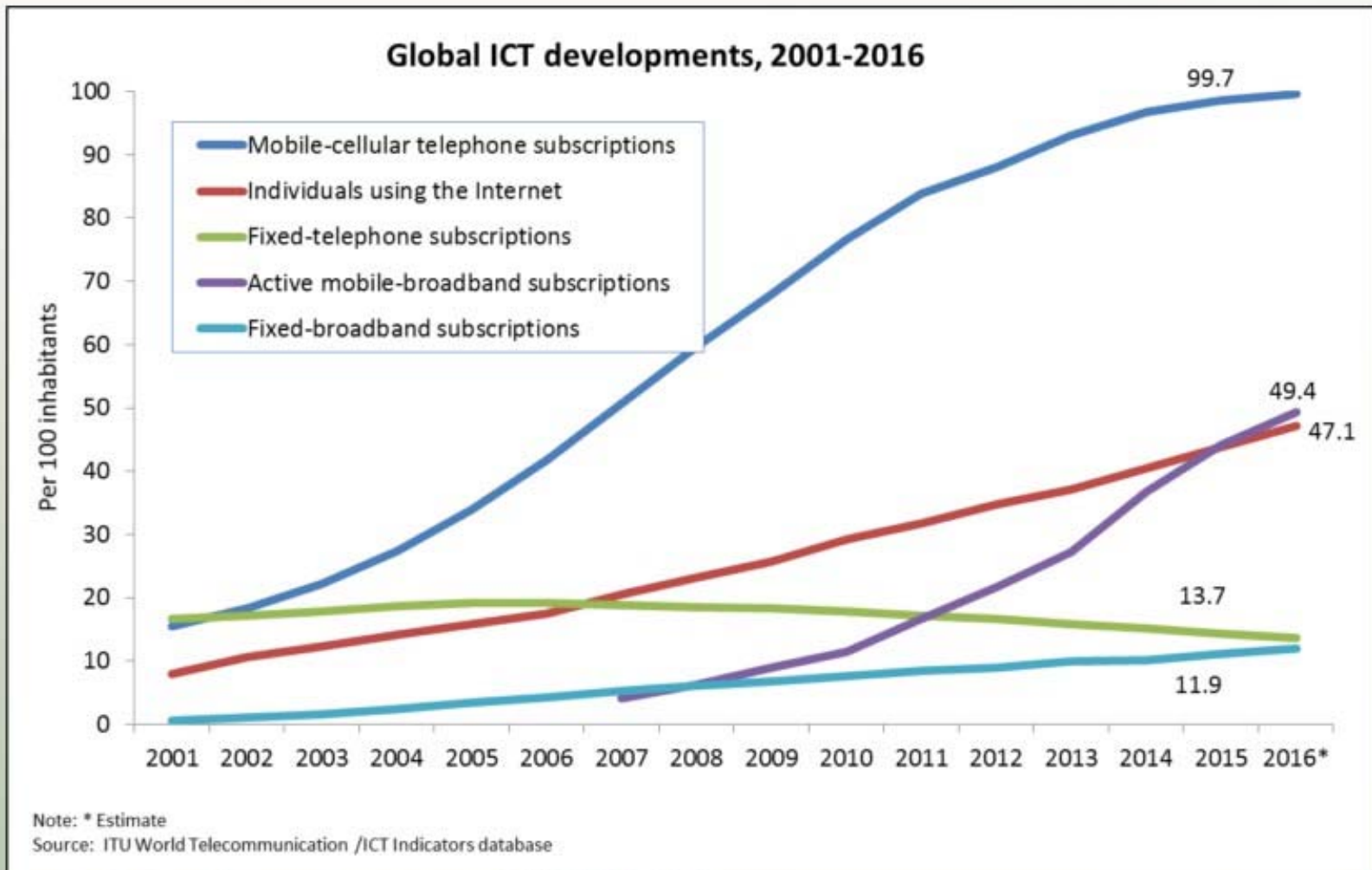
**ICT4  
D**

**ICT4D  
M**





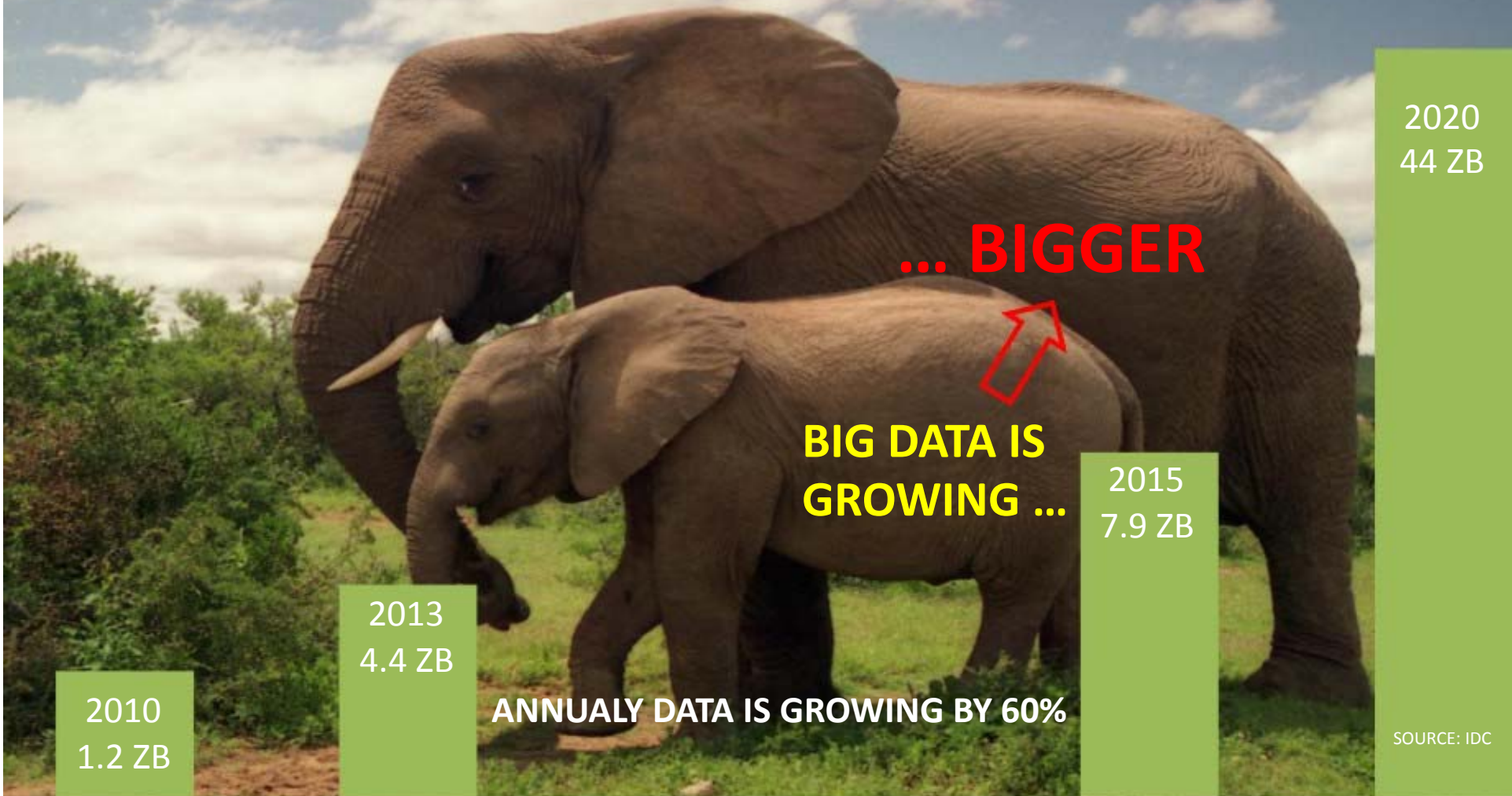
# Global ICT Developments 2001 to 2016\*



**SMART**  
**SUSTAINABLE DEVELOPMENT**  
MODEL INITIATIVE



# HERE COMES BIG DATA



1 ZetaByte = 1000<sup>7</sup> bytes = 10<sup>21</sup> bytes = 1000000000000000000000 bytes = 1000 exa bytes = 1 million peta bytes = 1 billion tera bytes = 1 trillion giga bytes.



**SMART  
SUSTAINABLE DEVELOPMENT  
MODEL INITIATIVE**







# THERE IS VALUE OUT OF THIS MESSY WORLD OF DATA



**SMART**  
**SUSTAINABLE DEVELOPMENT**  
MODEL INITIATIVE







# NOT ALL DATA HAS VALUE



2013  
22%

2020  
37%

Source: IDC 2014



**SMART  
SUSTAINABLE DEVELOPMENT  
MODEL INITIATIVE**



# Internet of Everything

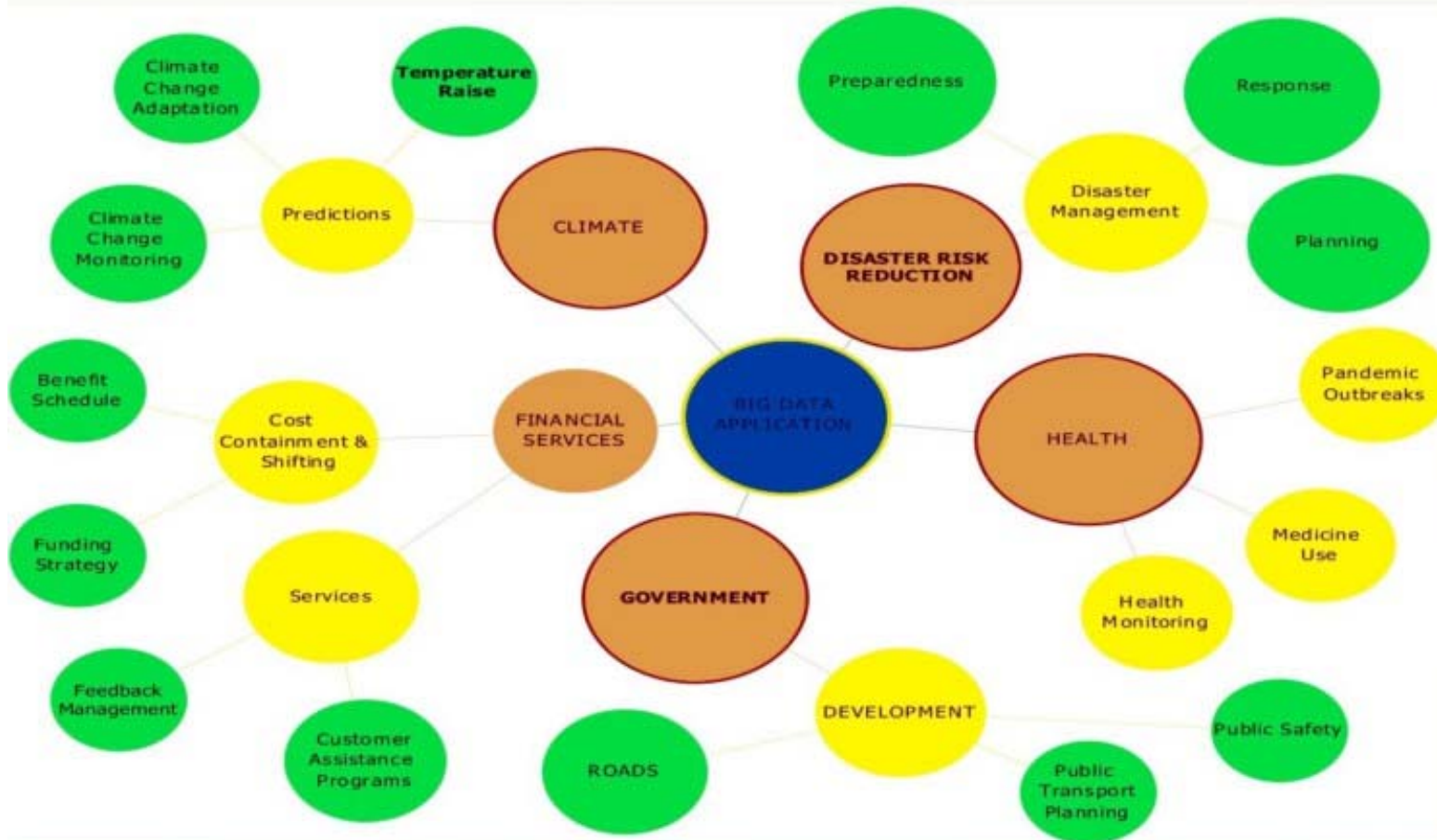


**DATA DATA DATA DATA DATA DATA DATA DATA DATA**





# Big Data and IoT Applications



- Agriculture
- Infrastructure
- Water
- Sanitation
- Pharmaceutical Industry
- Education
- Statistics
- Development
- National Security
- Risk Management,
- etc ...



**SMART**  
**SUSTAINABLE DEVELOPMENT**  
 MODEL INITIATIVE



# ICT4SDGs ECOSYSTEM



## STAKEHOLDER

- |  |  |  |
|--|--|--|
|  |  |  |
| Manufacturers  | UN Agencies  | Consumers  |
| ICT Operators  | ITU  | Groups   |
| Service provider   | FAO  | Civil society  |
| Content providers  | UNESCO   | NGOs   |
| Governments  | WHO  | ...  |
| Regulator  | ...  |  |
| Businesses   |  |  |
| Financial Institutions   |  |  |
| ...  |  |  |

## ENABLING ENVIRONMENT

- Availability
- Affordability
- Reliability
- Accessibility
- Trust and confidence
- Digital literacy
- Content



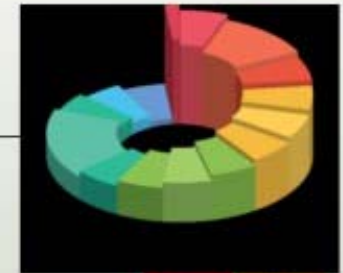
## APPS

- e-Health
- e-Education
- e-Finance
- e-Agriculture
- e-governance
- e-commerce
- ...



## CONNECTIVITY

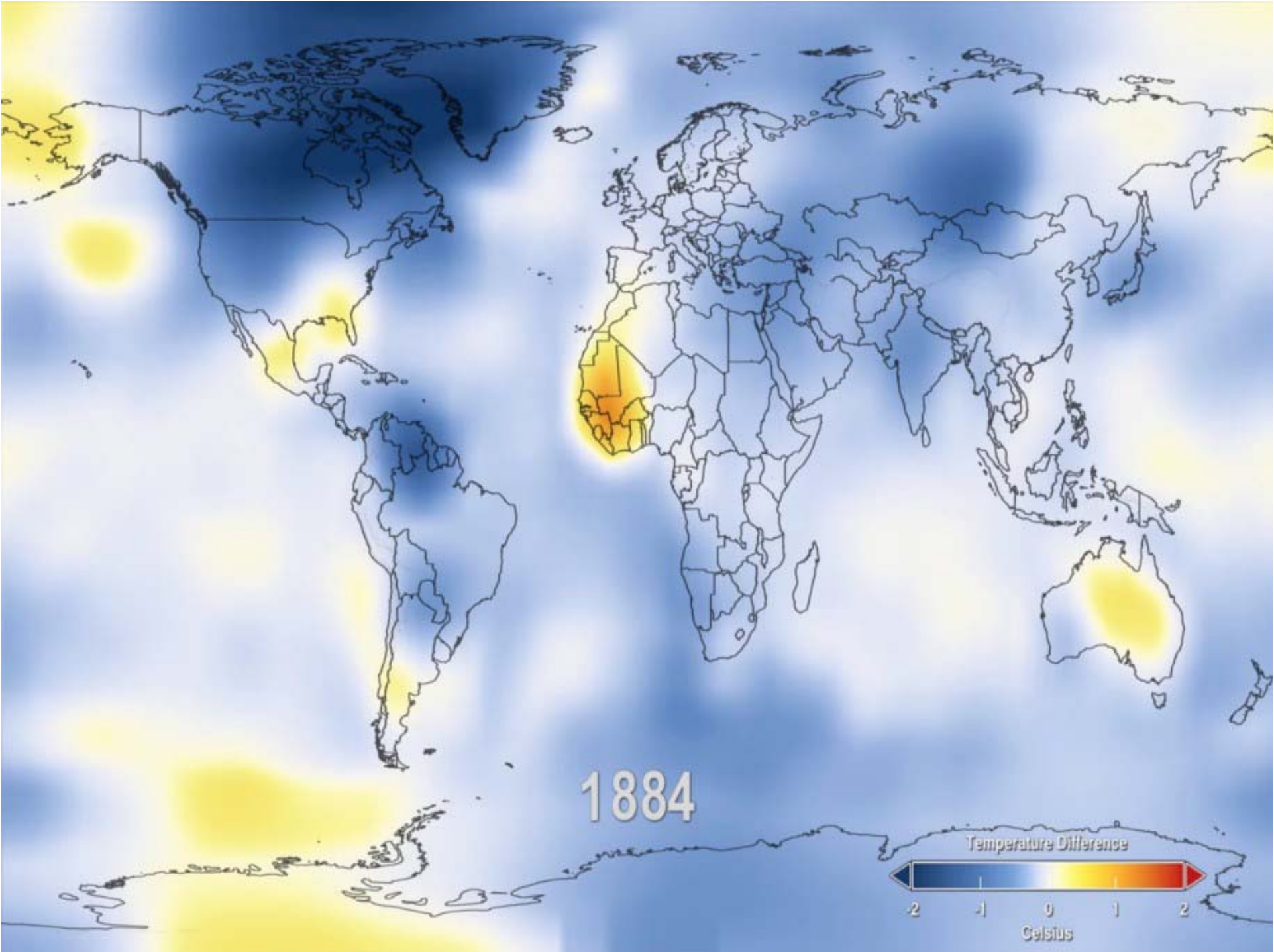
- ICT Operators(all)
- Service providers
- ISPs
- ITU



**SMART**  
**SUSTAINABLE DEVELOPMENT**  
 MODEL INITIATIVE









## Disaster Impact (2010-2012)

\$1.7

**TRILLION**  
ECONOMIC LOSS  
(USD)

2.9

**BILLION**  
AFFECTED

1.2

**MILLION**  
LOST LIVES



**SMART**  
SUSTAINABLE DEVELOPMENT  
MODEL INITIATIVE





# More with Less

INVEST 1\$ IN MITIGATION & PREPAREDNESS

1\$

SAVE MORE LIVES

20\$

to

14\$

SAVE 14 - 20 \$ IN RESPONSE



SMART  
SUSTAINABLE DEVELOPMENT  
MODEL INITIATIVE



## ACHIEVEMENTS SO FAR: FROM THE FIRST DVISORY BOARD TO THE SECOND DVISORY BOARD -2<sup>nd</sup> Cycle June 2017



**SMART**  
**SUSTAINABLE DEVELOPMENT**  
MODEL INITIATIVE





# TWO REPORTS BASED ON THE WORK OF THE ADVISORY BOARD

- Policy, Regulation and Advocacy
- Infrastructure and Technologies
- Financing, Partnerships and Business Models
- Resource Mobilization
- Innovation
- Regulatory Toolkit and Guidelines (REG)

## Outcomes



**SMART**  
**SUSTAINABLE DEVELOPMENT**  
MODEL INITIATIVE



# SECOND PART OF SSDM BOARD'S WORK



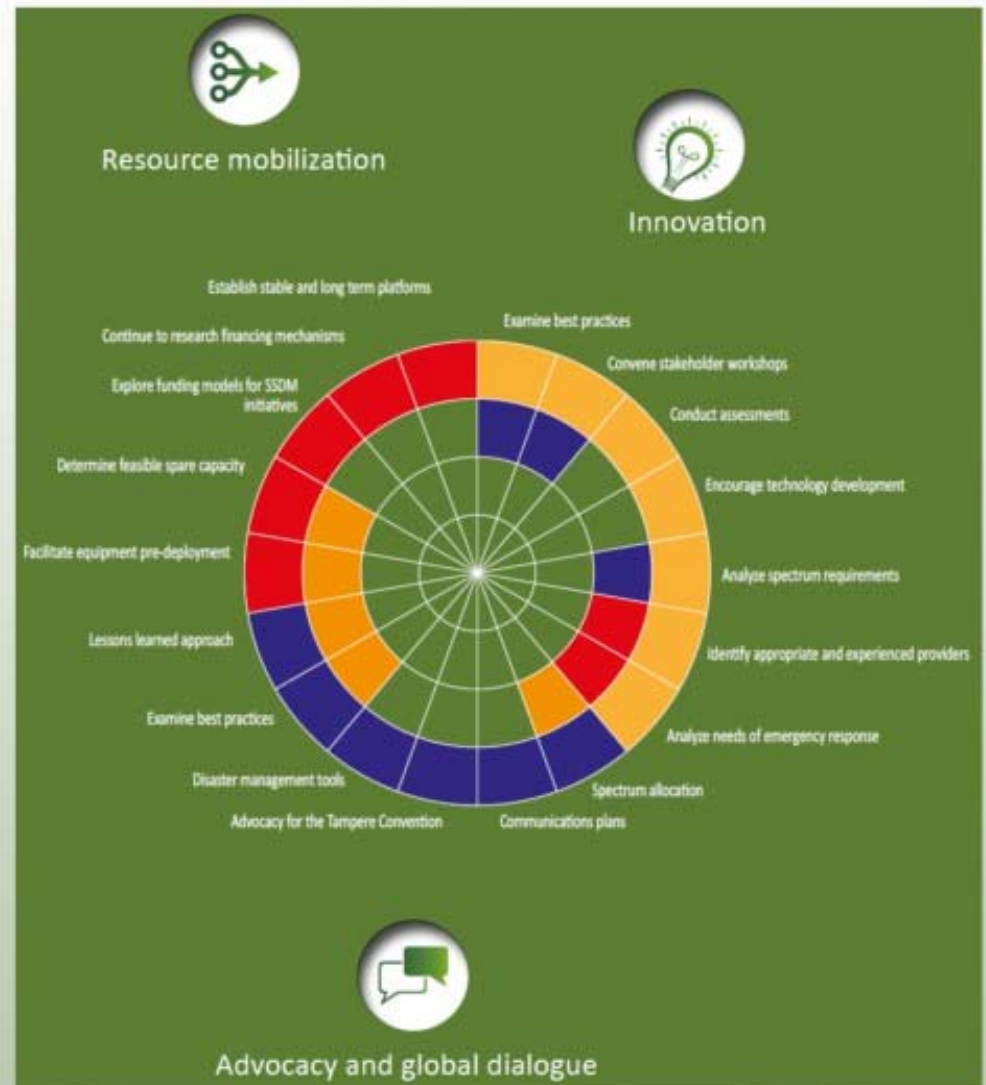
Advocacy and global dialogue



Innovation



Resource mobilization



**SMART**  
**SUSTAINABLE DEVELOPMENT**  
MODEL INITIATIVE







# 2<sup>ND</sup> GLOBAL FORUM ON EMERGENCY TELECOMMUNICATIONS

## SAVING LIVES



**25-28 JANUARY 2016**  
**The Regency Hotel, Kuwait City, Kuwait**

# OUTCOMES



**SMART**  
**SUSTAINABLE DEVELOPMENT**  
MODEL INITIATIVE





# Network of Volunteers for Emergency Telecommunications



**SMART**  
**SUSTAINABLE DEVELOPMENT**  
MODEL INITIATIVE



# Global Emergency Fund for Rapid Response



**SMART**  
**SUSTAINABLE DEVELOPMENT**  
MODEL INITIATIVE





# KEY SUCCESS FACTORS



**SMART**  
**SUSTAINABLE DEVELOPMENT**  
MODEL INITIATIVE



# ITU Framework for Cooperation in Emergencies (IFCE)

## Technology Cluster

- Satellite Operators and Service Providers
- Land Earth Station Operators
- Telecom Operators
- GIS and Remote Sensing Operators
- Radio Communication Equipment Providers

## Financial Cluster

- Governments
- Private Sector
- Development Banks
- Regional Economic Groups
- Philanthropic foundations
- International Organizations

## Logistics Cluster

- International Couriers
- Air-Transport Operators
- National Airlines
- International Organizations



**SMART**  
**SUSTAINABLE DEVELOPMENT**  
MODEL INITIATIVE





# POWER OF PARTNERSHIPS



# Financing



USF



**SMART**  
**SUSTAINABLE DEVELOPMENT**  
MODEL INITIATIVE





# Thank you for your attention!

## SSDM for a better tomorrow

International Telecommunication Union  
Place des Nations Geneva,  
Geneva CH-1211  
T: +41 22 730 5447

[ssdm@itu.int](mailto:ssdm@itu.int)

<http://www.itu.int/en/ITU-D/Initiatives/m-Powering/Pages/default.aspx>



**SMART**  
**SUSTAINABLE DEVELOPMENT**  
MODEL INITIATIVE

