

**ITU Regional Capacity Building Workshop on
“Strengthening Capacities in Internet Governance in the Arab Region”
Manama, Bahrain, 1-3 October 2019**

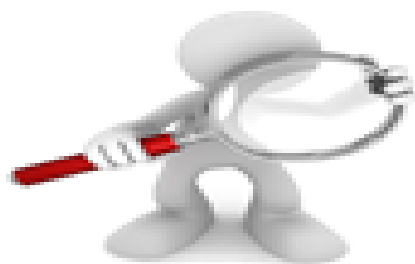
ITU’s capacity development activities in the Arab Region

**Eng Mustafa AlMahdi
ITU Arab Regional Office**



Overview

What we do?



ICTs Capacity Building
Priority Areas in Arab
Region

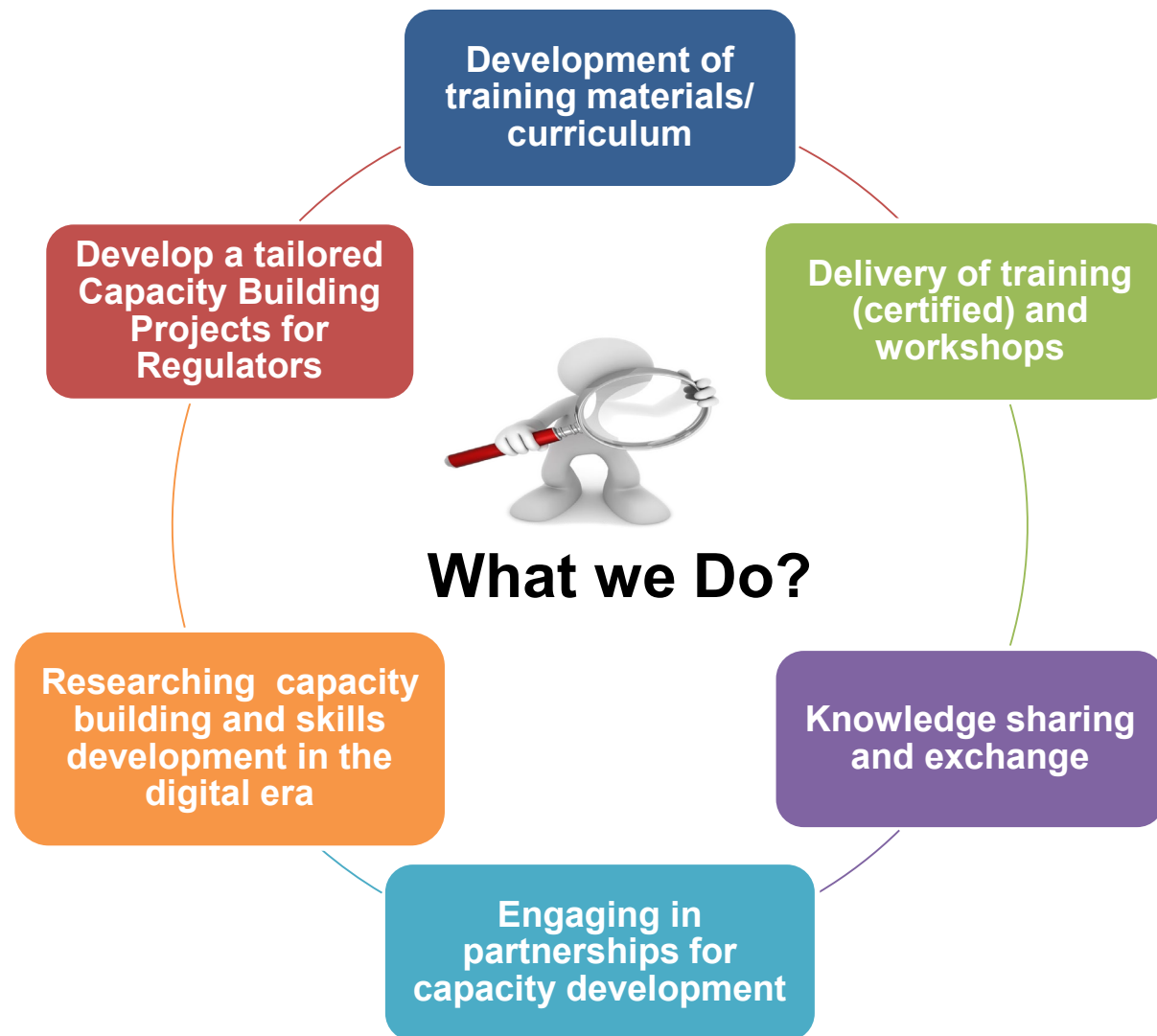


ITU Initiatives on
Capacity Building
and Partnerships



From Potential to
Effectiveness



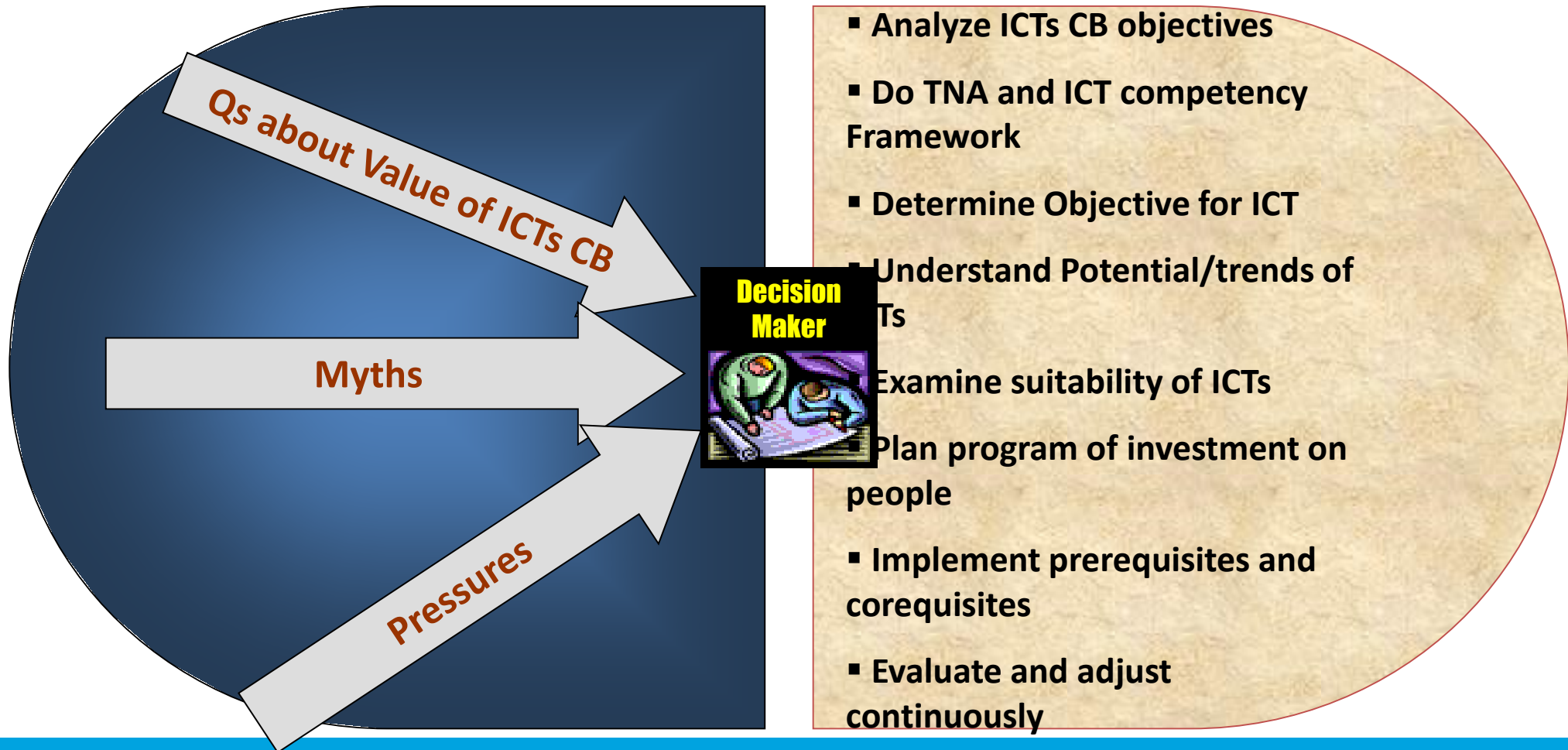


Dilemmas and Realities

Dilemmas



Realities



Capacity Building (CB) Priority Areas

Policy & Regulation

Big Data

IXP

C & I

ICT applications

Wireless and fixed
broadband Infrastructure

Internet governance

Spectrum Management

5G, IoT, Smart cities
and communities

Innovation &
Entrepreneurship

Digital Inclusion

Emergency Telecom

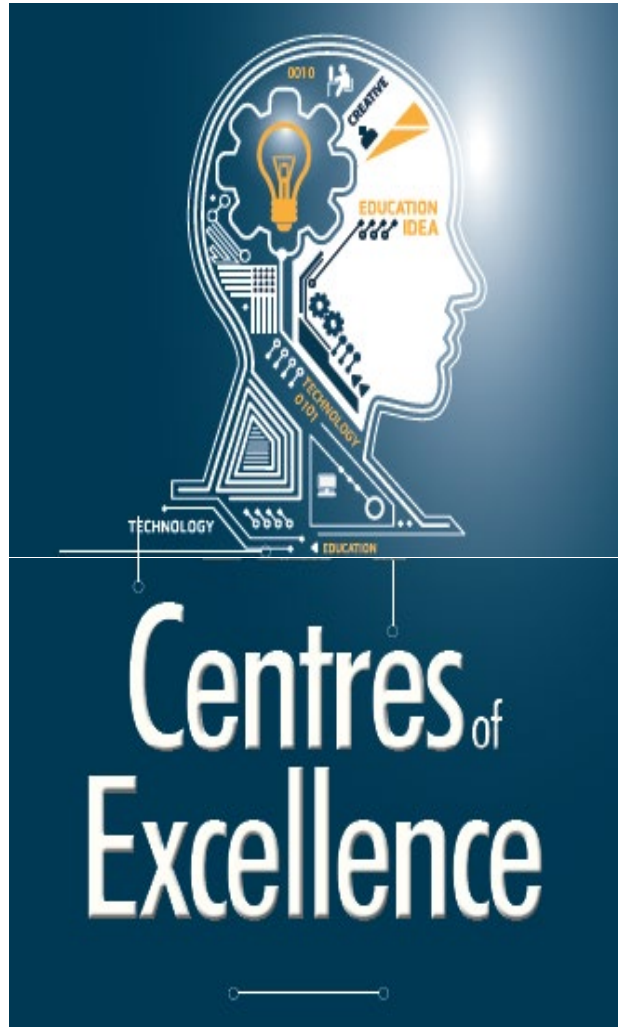
ICTs & the environment
(E-Waste, EMF, ICT&CC)

Cybersecurity & COP

Statistics

ITU Initiatives on Capacity Building and Partnerships

Centres of Excellence (CoE) Initiative



- ❑ Flagship ITU capacity development programme
- ❑ Global network of high-quality training institutions to build capacity and develop skills in the field of ICT and digital technologies
- ❑ Programme in place since 2001 – strategy was reviewed in 2012, new strategy started with last cycle (2015-2018)
- ❑ Core elements of new strategy:
 - ❑ self-sustainability principle
 - ❑ defined priority areas
 - ❑ limited number of centers
- ❑ 4-year cycle - aligned with WTDC
- ❑ WTDC Resolution 73 (mandate)
- ❑ CoE networks established in Africa, the Americas, Arab States, Asia-Pacific, CIS and Europe

ITU Arab CoEs Network Members (2019-2022 cycle)

ITU Arab

Centres of Excellence Network



Total of 4 CoEs and 5 priority areas



What is the ITU Academy

- ❑ The ITU Academy online platform is the gateway to ITU's capacity development and training activities
- ❑ It is comprised of two systems:
 - ❑ A content management system (CMS) featuring information on ITU's activities and links to capacity building events, workshops and training courses
 - ❑ A learning management system (LMS) featuring a fully-fledged online learning environment
- ❑ All course payments and registrations, for both online and face-to-face courses, are managed through the ITU Academy platform

ITU Academy
Empowering minds

The screenshot shows the ITU Academy website homepage. At the top, there is a navigation bar with links for 'Login', 'Create account', 'Registration guide', and 'Terms and conditions', along with a '0 courses' indicator. Below the navigation bar is a large banner with the text 'The leading platform for all ITU capacity development activities'. Underneath the banner is a section titled 'Upcoming trainings' with a subtext: 'The ITU Academy catalogue offers a large selection of online, face-to-face and blended courses. If you are looking for a specific course, browse through the catalogue below or use the [advanced search](#).' Below this text is a row of six course cards, each with a date, format, and title. The courses are: 08 JUL 2019 FACE TO FACE Africa ENGLISH \$1,200.00; 08 JUL 2019 FACE TO FACE Africa FRENCH \$0.00; 08 JUL 2019 FACE TO FACE CIS courses RUSSIAN \$95.00; 12 JUL 2019 ONLINE INSTRUCTOR LED World or Multi-Regional ENGLISH \$750.00; 15 JUL 2019 ONLINE INSTRUCTOR LED World or Multi-Regional ENGLISH \$0.00; and 15 JUL 2019 FACE TO FACE Africa FRENCH \$850.00. Below the course cards is a blue button labeled 'LOOK FOR MORE COURSES' with a right-pointing arrow. At the bottom, there is a section titled 'Find your courses by topic' with the text: 'The ITU Academy offers courses and capacity development activities on a wide range of topics.'

ITU Academy Support: Training Programmes Development

- ❑ Standardized training materials in priority areas as defined by ITU membership
- ❑ Training materials of the highest level and quality; materials undergo thorough peer review
- ❑ Up to date - using the expertise from membership and academia



**Training programmes developed/
under development**



Complete and available



Complete and available

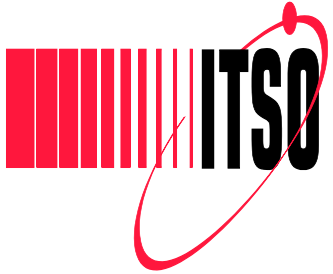


Complete and available



In progress, close to completion

Partners ④ Capacity Building Programmes in Arab Region



- Satellite Communications
- E-waste statistics
- QoS/STP
- IPv6 and IoT
- ICT Policy, Regulation and Management
- 5G
- Digital Transformation
- SMTP



From Potential to Effectiveness

1. Expanding CB Opportunities

2. Increasing Efficiency

3. Enhancing Quality of Training

Issues

- ❑ Broadcast Courses
- ❑ Online: Interactive Courses
- ❑ Online: Streaming Courses
- ❑ Virtual Universities/Schools

- ❑ Broadband connectivity
- ❑ Virtual Online Courses

- ❑ Motivate and engage learners
- ❑ Bring life to concepts and processes
- ❑ Foster inquiry and provide flexibility
- ❑ Allow application of information
- ❑ Provide access to world of information
- ❑ Bring the world into the classroom
- ❑ Offer tutored and individualized learning

4. Enhancing Quality of Training

- ❑ Difficult Profession
- ❑ No One-Shot Training
- ❑ Continuum
 - Initial Training
 - Lifelong Upgrading
 - Connecting

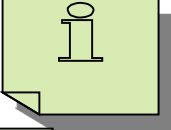
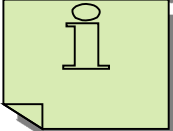
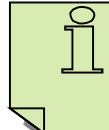
5. Facilitating Skills Formation

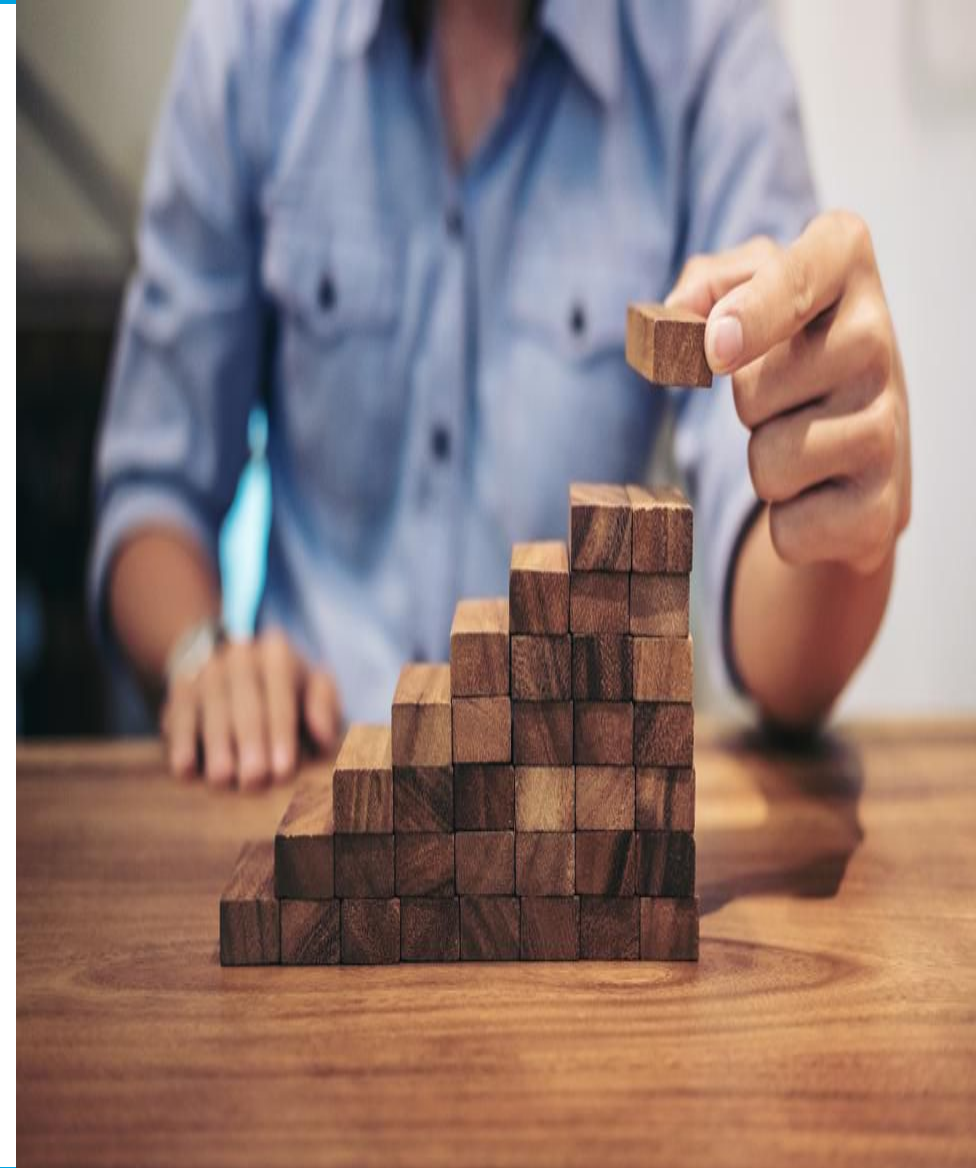
- ❑ New Workplace Realities
- ❑ Online Training
 - Just-in-Time
 - Convenient Place
 - User-centric

6. Sustaining Lifelong Learning

- ❑ Workers need to learn new skills
- ❑ Modern societies demand constant updati
- ❑ Life-cycle pattern is changing

From Potential to Effectiveness

- ❑ Educational ICTs Policy
- ❑ Approach to ICTs 
- ❑ Infrastructure 
- ❑ ICT-Enhanced Content
- ❑ Committed and Trained Personnel
- ❑ Financial Resources 
- ❑ Integration
- ❑ Piloting and Evaluation



Challenges

- ❑ Engagement of stakeholders outside ITU's reach
- ❑ Lack of funding for CB activities and projects by stakeholders in the region
- ❑ Limited human resources
- ❑ Instability in the region



THANK YOU!

ITU Regional Development Forum for the Arab Region (RDF-ARB), Beirut, Lebanon 19th March 2019

