



DIGITAL STRATEGIES FOR
DEVELOPMENT SUMMIT **2015**
Accelerating Inclusive Development through ICT Innovation
A Knowledge Exchange Forum for Asia-Pacific Region and Beyond

Leveraging Agriculture through ICT- GISB Approach







Grameen Intel
Social Business Ltd.

Why we need sustainability in agriculture

- Ensure food security
- 70 % of population employed in farming (smallholder, rural)
- 62% GDP impact of agriculture in developing countries

GISB Product Portfolio – ICT solutions that address specific social problems such as low agriculture output, lack of pre-natal care and education

| | Agriculture | Early Learning | Health | |
|------------------------|---|---|---|--|
| Solution | <p>Mobile Compute – Tablet/PC</p> <p>eAgro apps for nutrient analysis and recommendations for seeds, fertilizers, and market linkage</p>  | <p>Phone-call-in</p> <p>Mobile based solution (voice, txt) using the key eAgro algorithms</p>  | <p>Mobile Compute – Tablet/PC</p> <p>Pre-K learning tools customizable In any language</p>  | <p>Web registration</p> <p>Maternal and child health tracking And monitoring software</p>  |
| Direct Customer | <p>For development agencies, government programs, social franchises and entrepreneurs.</p> <p>Micro-Entrepreneurs and Agric. extension programs</p> | <p>2015: revenue sharing with telecom company with nationwide coverage.</p> <p>Farmers directly call Krishi call center</p> | <p>Download for everyone</p> | <p>In R&D stage</p> <p>Expectant mothers, newborns and toddlers in rural areas</p> |
| Cost | ~\$10/license | \$0.10/query | Freely available for download on the Google Play Store | \$10/license + \$12 annual Web-hosting cost |

- Bringing Expert advisory at farmers doorstep
 - Recommendation on seed, fertilizer, pest and disease control
- Introducing ICT enabled business model with
 - Micro entrepreneurs
 - Public and private sector partners
- Efficiency and transparency in market linkage;

We provide **sustainable technology solutions and business models** to improve the livelihood at the base of the pyramid.

795 million without enough food
67.4 million children out of school
2.9 million newborns died in 2012

Our goals as a **social business** are:

- Sustainably improve livelihood through entrepreneurship
- Support capacity building
- Improve food security
- Better infant and maternal health
- Increase child literacy

~250 Entrepreneurs
serving 22964 Farmers



We work with Governments, Development Funds, and International Organizations



OUR SOLUTIONS

Easily Scalable, Globally Replicable.



Seed recommendation app to identify best seed options, improve input cost and increase yield.



Harvest management application to link buyers with farmers and create market transparency.



Educational app for pre-school children to learn the basic foundations of language. (Currently available in English, Arabic, and Bangla)



Soil analysis solution to identify optimum fertilizer, improve input cost and increase yield.



Telecommunication based solution to leverage the high coverage of mobile network to benefit farmers.



Drawing app to encourage creativity and cognitive development among young children



Solution to prevent, control, and fight plant diseases, weeds and pests based on best practices.

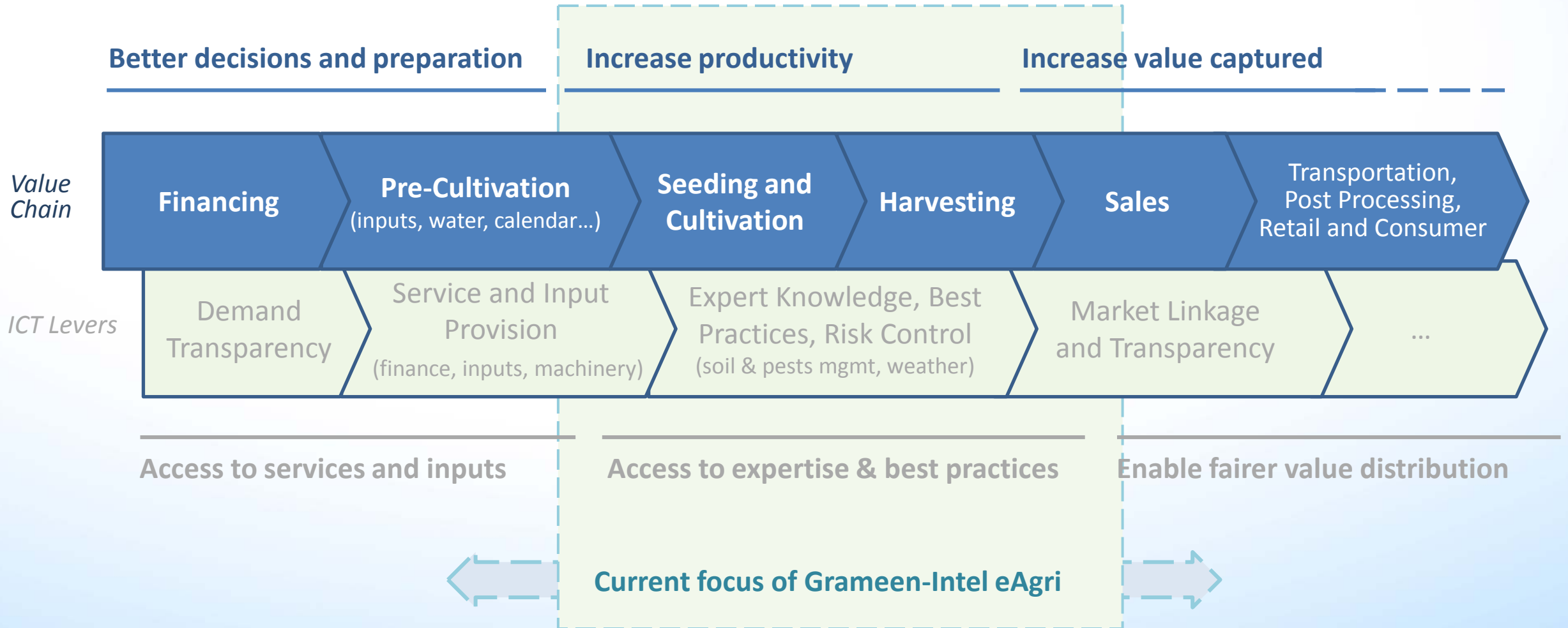


Vaccine scheduling and tracking software for newborns and toddlers.

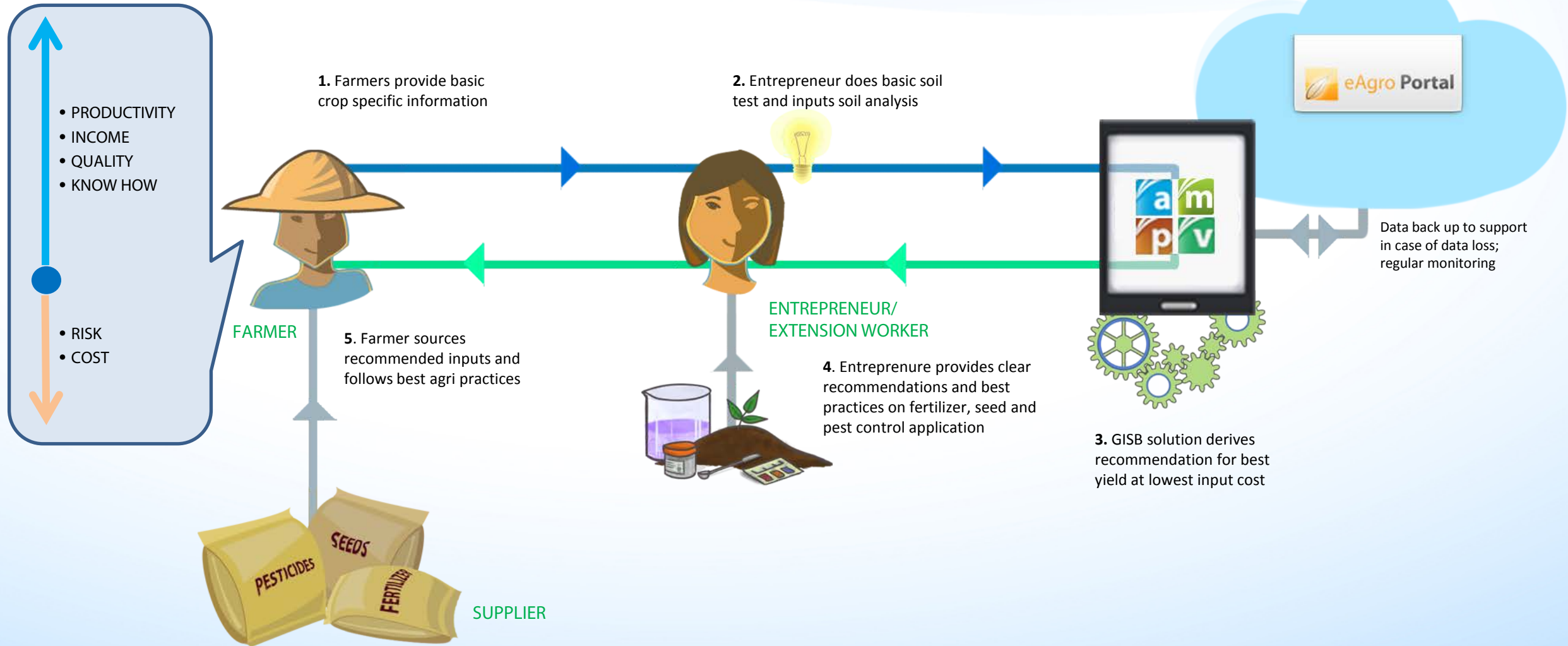


Antenatal care monitoring software for pregnant women to help identify high risk pregnancies early on for appropriate follow up.

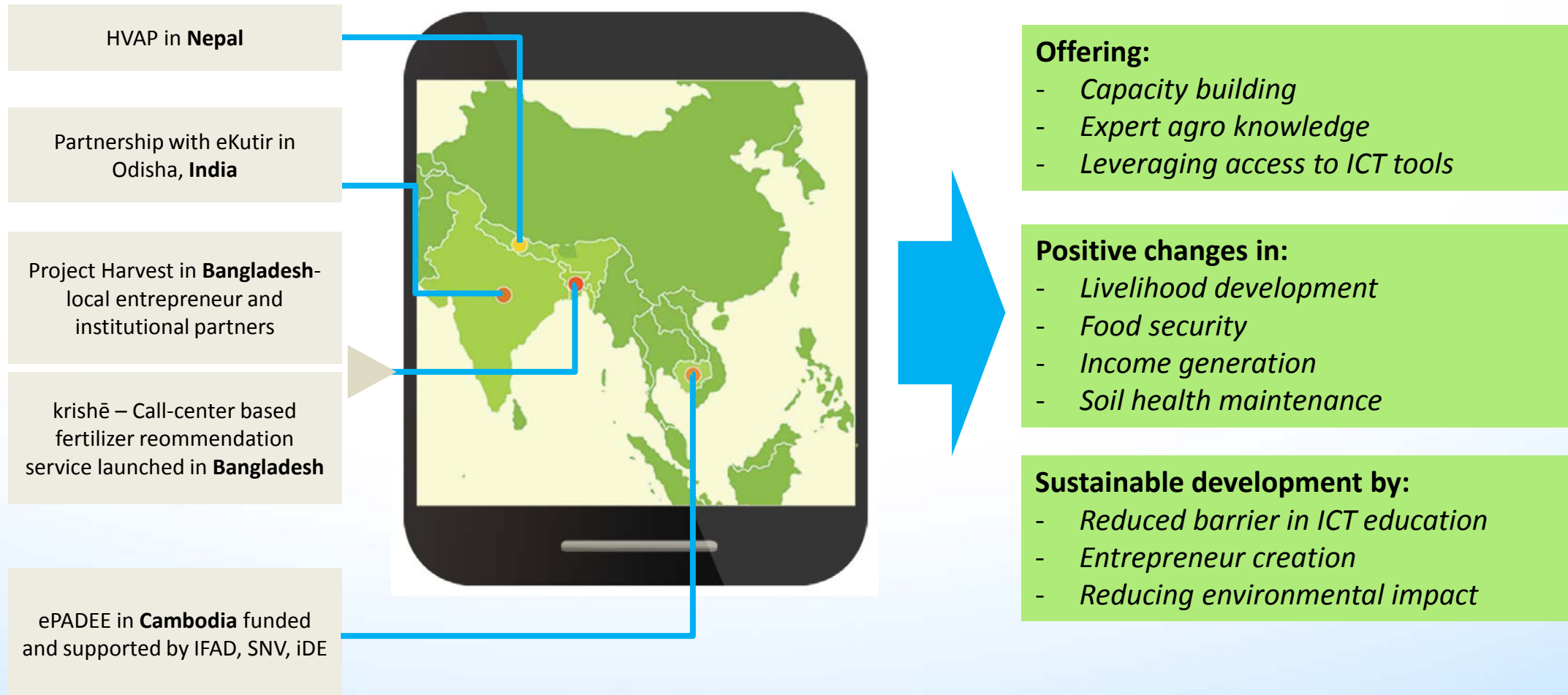
ICT driving agriculture impact across the value chain



eAgriculture Working Model

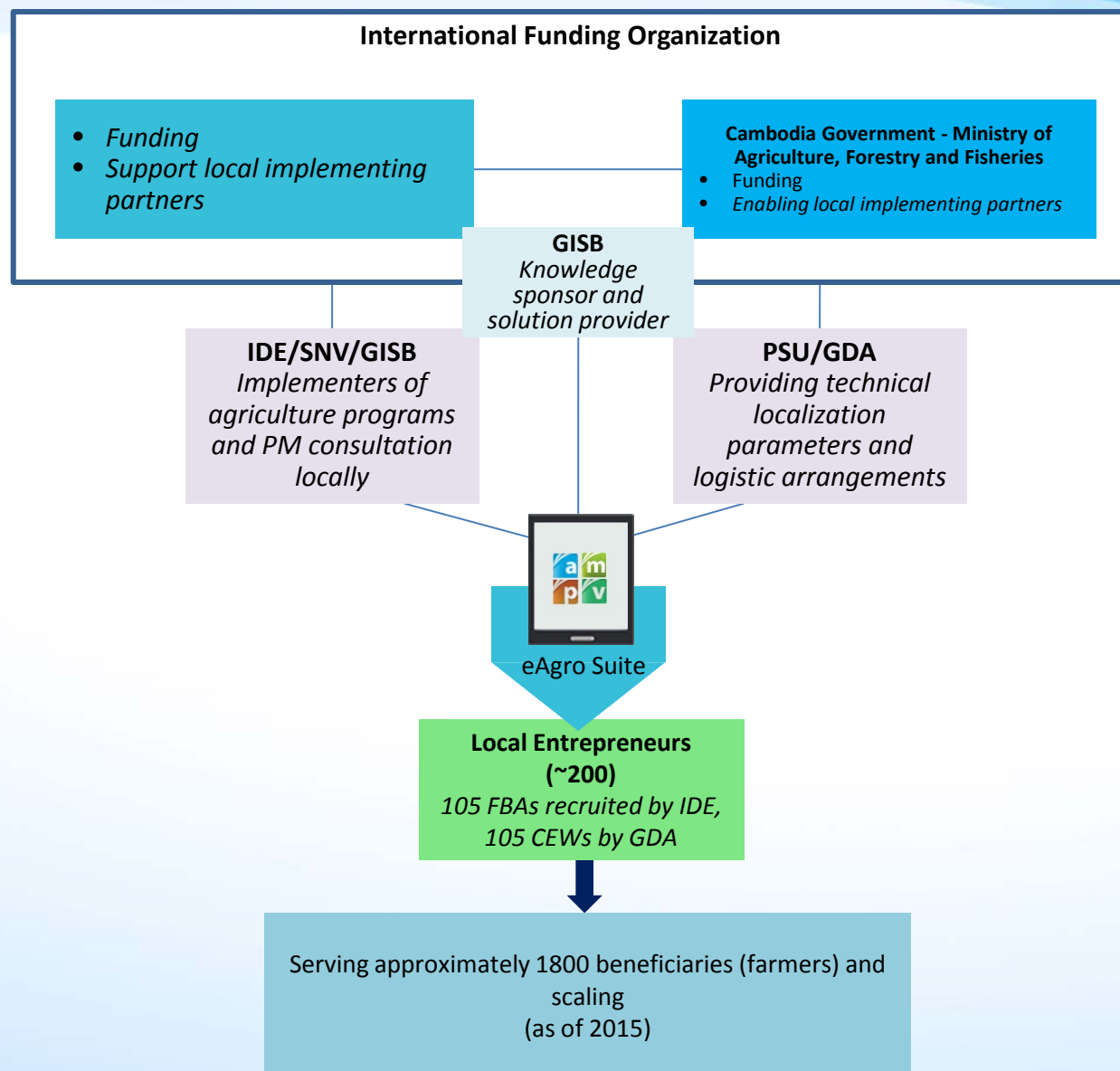


Partnership and collaboration for sustainable agriculture development



ICT partnerships (with entrepreneurs) are integral to the GISB eAgro model

e-PADEE – an example



eAgronomy suite is a mobile solution (Tablet, Notebook) that brings affordable expert advisory services for crop and soil management to small holder farmers to maximize yields and improve the quality of the harvest. The SW suite comprises of

- seed selection and recommendation - **ānkur**
- soil nutrient analysis and fertilizer recommendation - **mrittikā**
- crop protection recommendation - **protikār**
- direct market or buyer information to farmers - **vistār**

PADEE Goal

- introducing information and communication technology (ICT) to **increase rice productivity to become a net exporter**, highlighting importance of rice experts, knowledge based agro expert system and the usage of ICT for enabling rural development
- Enable small holder farmers to achieve **sustainable high yield on crops**



DIGITAL STRATEGIES FOR DEVELOPMENT SUMMIT **2015**

Accelerating Inclusive Development through ICT Innovation
A Knowledge Exchange Forum for Asia-Pacific Region and Beyond

3-Day Conference | 22-24 September 2015 Venue | Waterfront Cebu City Hotel

