



REGIONAL SUPPORT FOR DEVELOPMENT OF NETPS – PACIFIC ETC

NETP Workshop: Port Vila, Vanuatu, 14 May 2017

Salma Farouque
WFP – Fiji Office
Pacific ETC Coordinator
salma.farouque@wfp.org



Outline

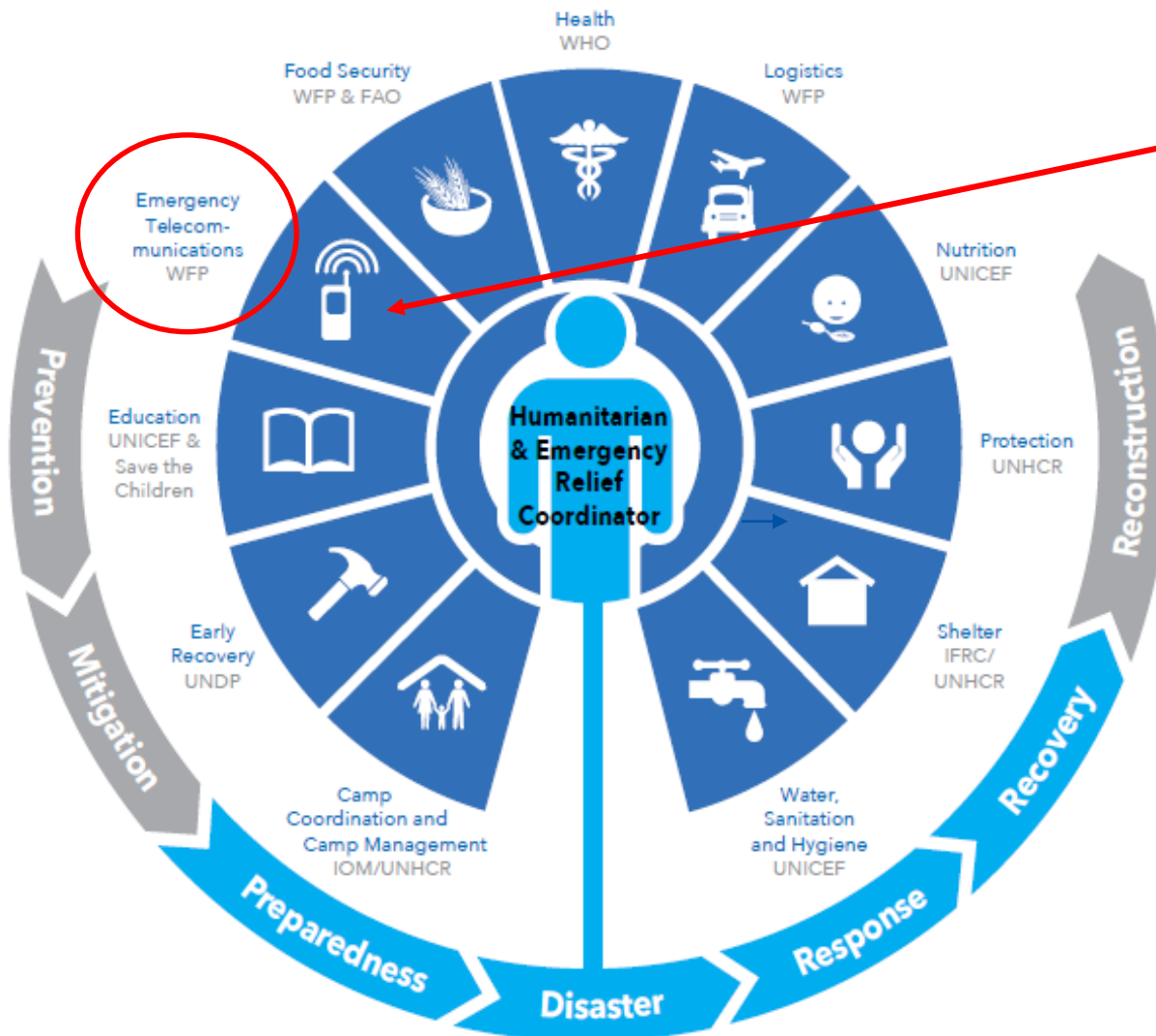
- Global Emergency Telecommunications Cluster (ETC)
- Pacific ETC
- Nat'l ETCs
- Met Community – interested to be involved

What is the global humanitarian cluster system?



- Global clusters are groups of **humanitarian organisations**, both UN and non-UN, **in each of the main sectors of humanitarian action**, e.g. shelter, health, logistics, **emergency telecommunications**. Clusters are responsible for coordination.
- The humanitarian Cluster Approach, introduced under the Humanitarian Reform Agenda in 2005, is a **coordination mechanism** for humanitarian response.
- Helps to ensure that **everyone involved in a response works together** to assist affected populations.

Humanitarian IASC Clusters



- ETC lead agency: UN WFP

Global ETC



A global network of organisations that work together to provide shared communications services in humanitarian emergencies.



GRAND DUCHY OF LUXEMBOURG
Ministry of Foreign Affairs

Directorate for Development Cooperation



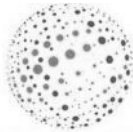
International Federation
of Red Cross and Red Crescent Societies



World Food Programme

wfp.org

ERICSSON RESPONSE



NETHOPE



OCHA



UNHCR
The UN Refugee Agency



Communications for life



ICRC



UNDSS



Swedish Civil Contingencies Agency



World Health Organization

WFP is global lead agency of the ETC



Regional ETC in the Pacific – preparedness





- ETC is one of the regional clusters under the Pacific Humanitarian Team (PHT)
- We are here to support countries on their **preparedness** activities: **NETP fits within this**
- **Available at the request of countries** to assist in their development of NETPs: *Document drafting support and review*
- You can get in touch with us at: **pacific.etc@wfp.org**

Pacific – coordination groups



- **CROP ICT Working Group**, chaired by USP.
- **Pacific ICT Regulatory Resource Centre (PIRRC)**, providing regional support to regulators.
- **Pacific Island Telecommunications Association (PITA)**, represent the interests of small island nations in the Pacific Region in the field of telecommunications.
- **Pacific Emergency Telecommunications Cluster**, led by WFP (under the Pacific Humanitarian Team).
- **Pacific Island Communications & Infrastructure (PICI) Panel**, falls under SPREP.

Coordination is key



- There are **many projects** in the region that are enhancing ICT systems emergency preparedness and response
- **National** and **regional groups** that focus on emergency telecommunications help to **align all parties**
- **Broad membership:** government-led, NDMOs, private sector, civil society, humanitarian agencies (UN, Red Cross), military, broadcasters, media agencies etc
- Partnerships and collaboration – **working together.**



- Under the **national disaster management arrangements** in many PICs a '**cluster**' structure is **in place** to coordinate sector response.
- For example (emergency telecoms):
 - **Vanuatu** Nat'l Emergency Telecommunications Cluster (ETC)
 - **Tonga** Communications Cluster
 - **Fiji** Infrastructure Cluster / ETC
 - **Solomon Islands** Infrastructure Committee (*under NDOC*)

Nat'l Emergency Telecom Plans



- A regional initiative led by the PIRRC to support countries who want to develop an **NETP**
- A national plan that can **guide implementation** relating to emergency telecommunications
- Asset inventory, contact points, callsigns, pre-agreed messaging, coordination mechanisms

Nt'l Emergency Telecom Plans



- The NETP structure will address:
 - **Preparation:** Helping people to understand the need to prepare for disasters
 - **Alerting:** Alerting people to impending disasters
 - **Response:** Helping people and agencies to respond to a disaster
 - **Recovery:** Helping people recover after a disaster



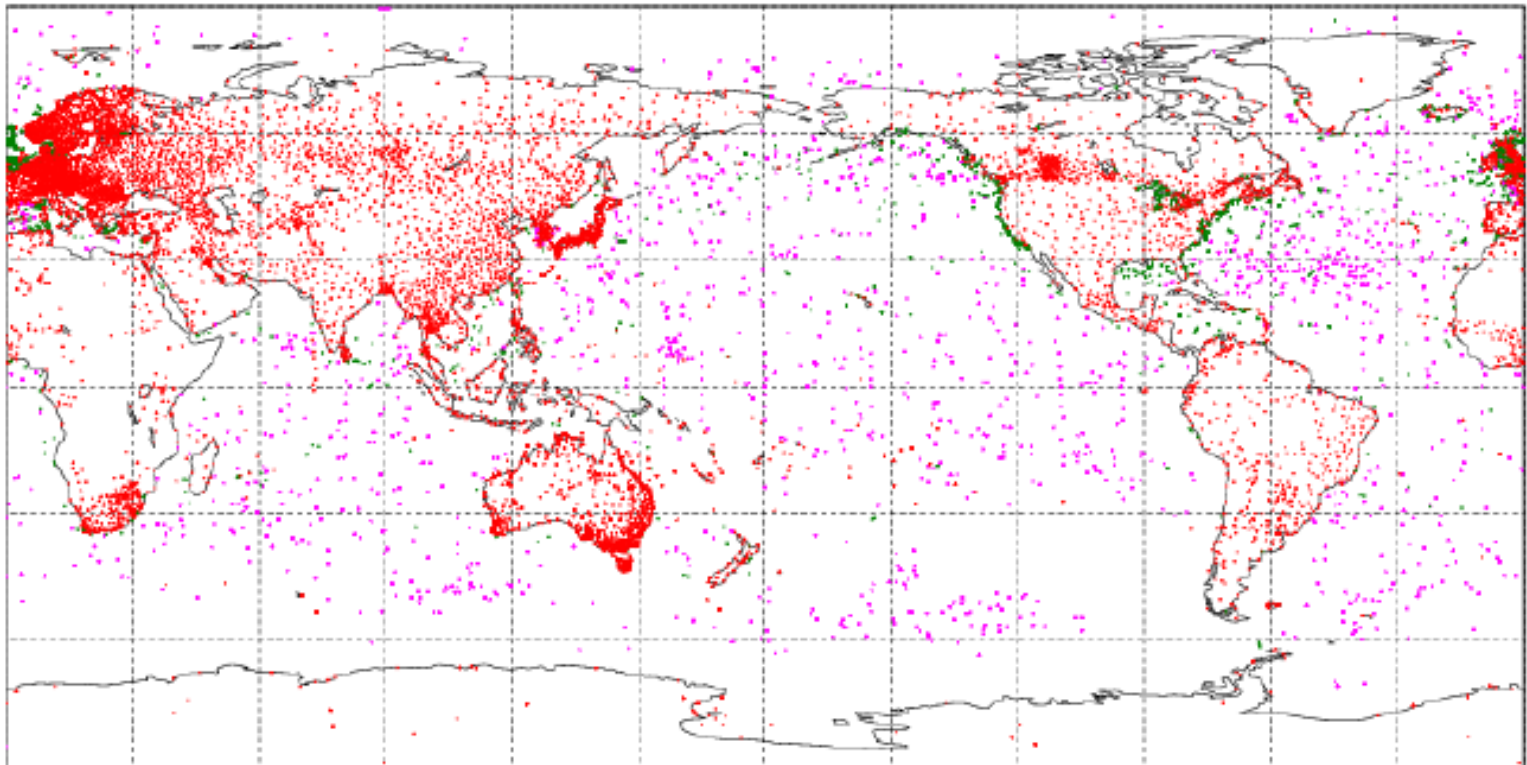
Met Community – PICI Panel (SPREP)



Met – observation stations

Australian BoM ACCESS-G Accepted observations coverage
Surface 20140819 0000 UTC
Total number of obs = 34747

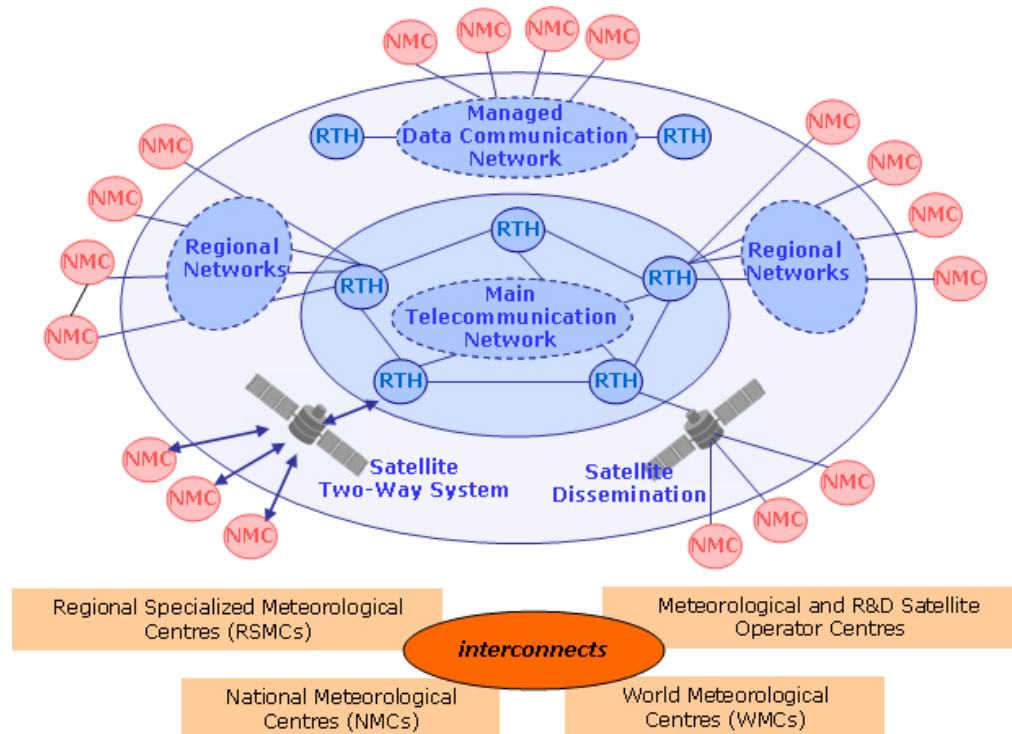
23731 synop land 3478 synop ship 7538 buoy



Issue time 05UTC 19 Aug 2014

Met – Global Telecommunication System (GTS)

The Global Telecommunication System (GTS) is defined as: "The coordinated global system of telecommunication facilities and arrangements for the rapid collection, exchange and distribution of observations and processed information within the framework of the World Weather Watch."





Salma Farouque

UN WFP - Suva, Fiji

- salma.farouque@wfp.org
- pacific.etc@wfp.org
- *Mobile: +679-763-1000*





THANK YOU

VINAKA

