

CityNext-ISO18091

Building Reliable Governments,
Sustainable Governments

Erick Stephens
CTO Asia-Pacific, Public Sector
@estepmen



Microsoft CityNext

TRANSFORM
Operations & Infrastructure

ENGAGE
Citizens & Businesses

ACCELERATE
Innovation & Opportunity



Education

Health &
Social Services

Government
Admin.

Public
Safety
& Justice

Buildings,
Infrastructure,
Planning

Tourism,
Recreation,
Culture

Energy
& Water

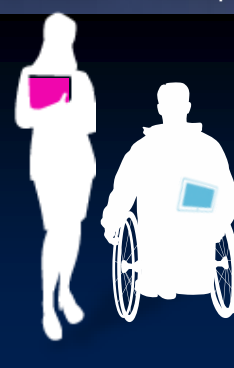
Transportation



Government



Citizens



Business

People First Approach

Why Microsoft?

Broad portfolio of familiar, secure consumer to business software, devices & services

Diverse and vast Partner Ecosystem that scales and replicates offerings worldwide

Citizen focused education and social programs with a history of delivering real impact for a better tomorrow



Cloud



Mobility

Devices & Services Platform

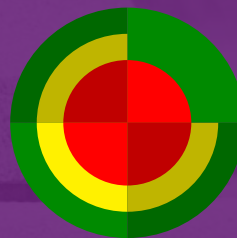


Social



Big Data & Analytics

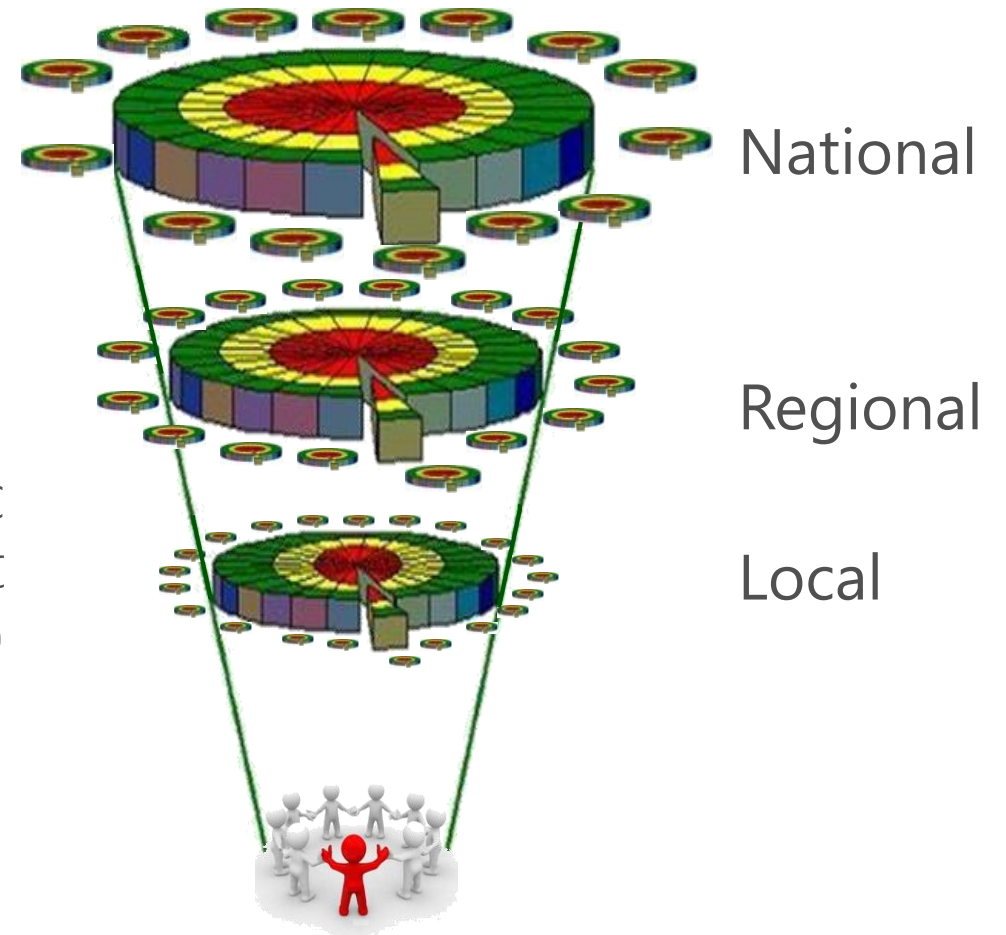
ISO-18091 governance



Our Vision – building a Reliable Government

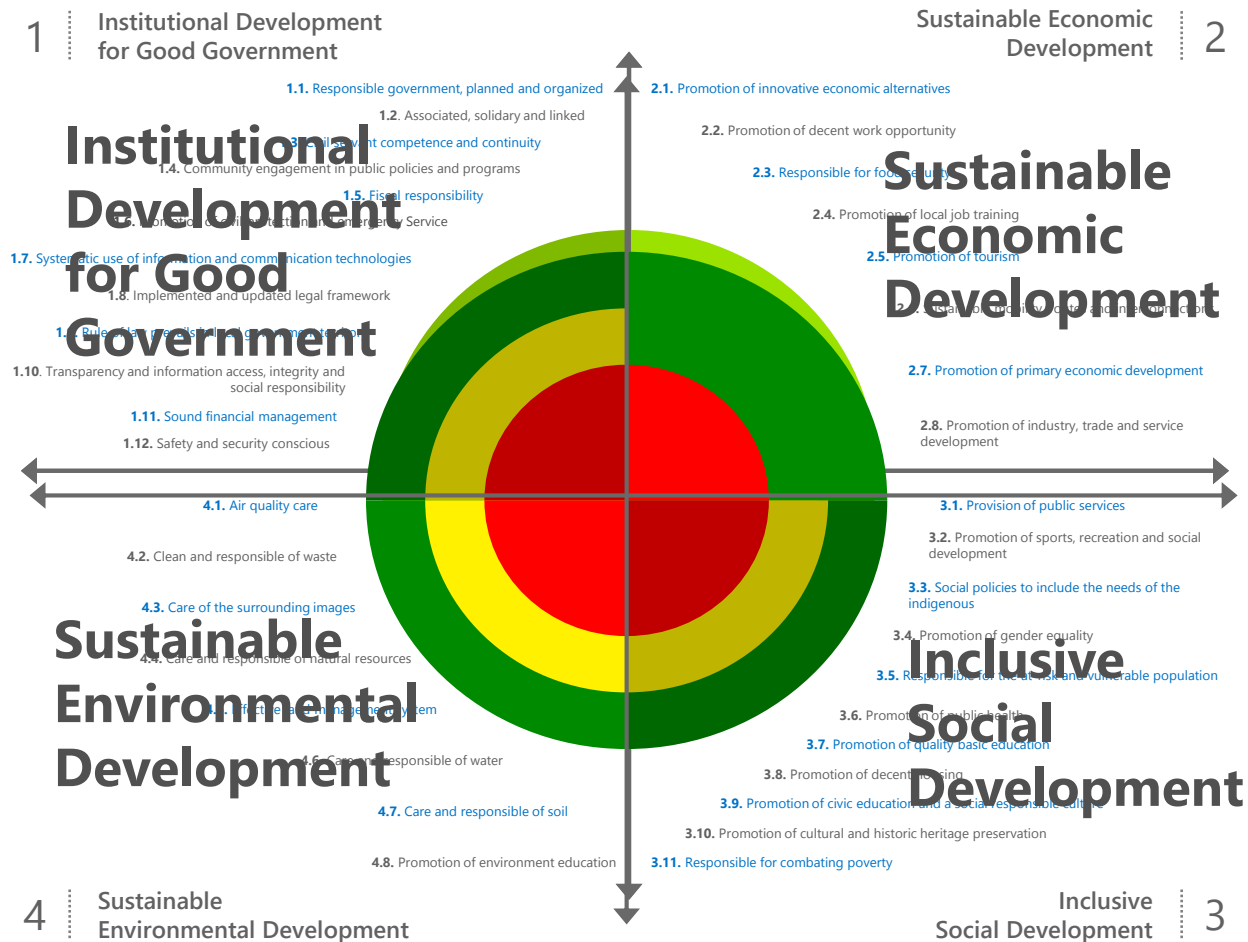
To understand where we want to go...
first we need to understand where we
are...

To understand a local gov't, a holistic
view – citizen centric is a way to start
(ISO-18091 approach)



Every city aspires to achieve ISO benchmarks on what makes 'good government' a reliable government

ISO 18091 – a check-up system for cities



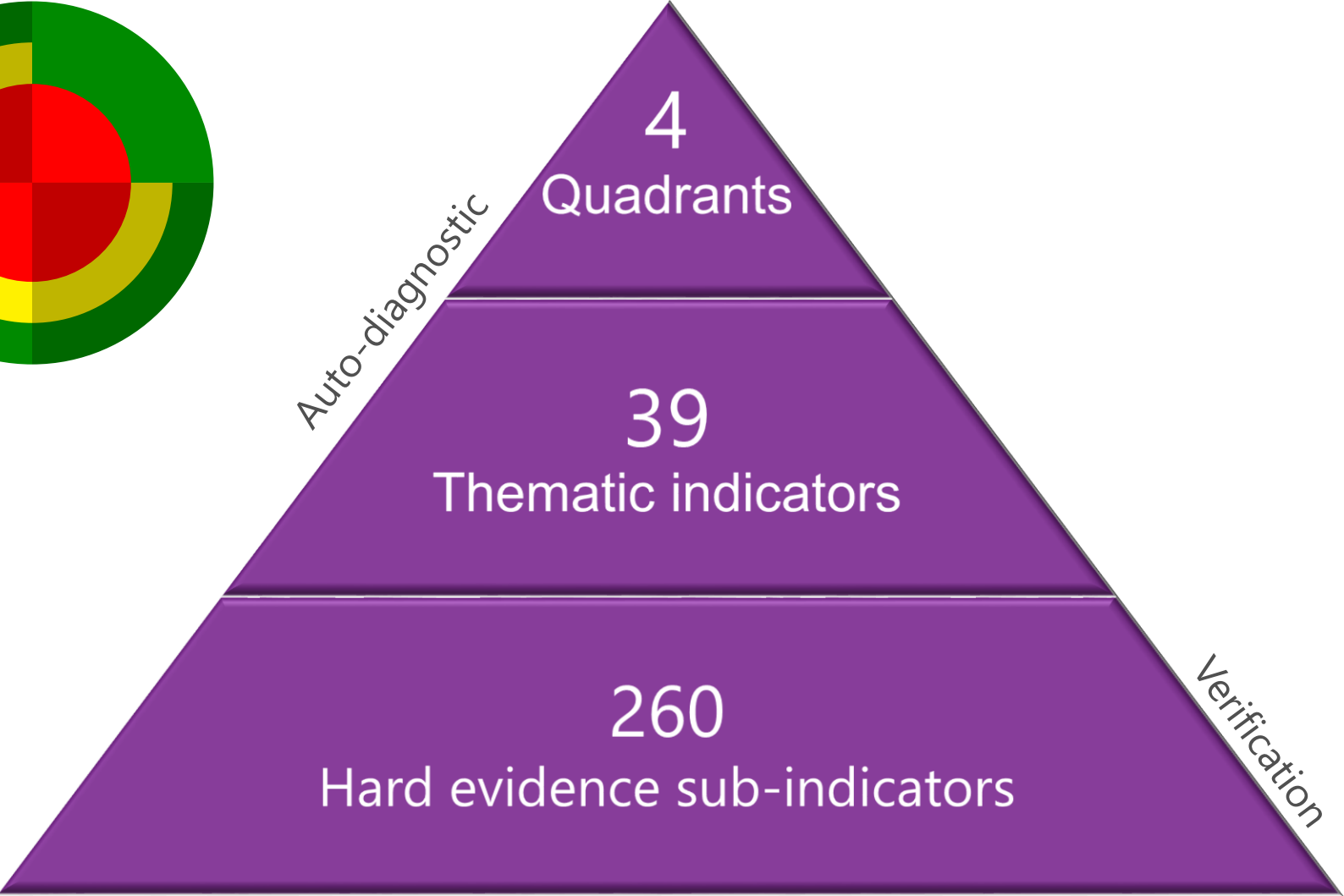
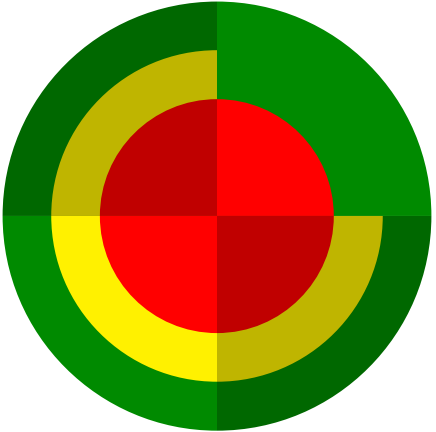
ISO provides a fact-based way for governments to show their citizens progress on key indicators in the areas of:

- Institutional development for good government
- Sustainable economic development
- Inclusive social development
- Sustainable environmental development

ISO shows us the social, political, and economic priorities of cities and then enables us to offer, develop, and sell relevant solutions to customers through partners

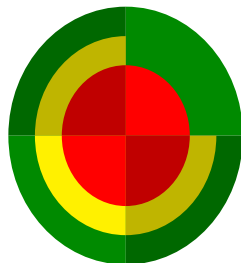
Microsoft Joint Venture executives were part of ISO standards-setting board

ISO-18091 Annex "B"



“Check Up” System for Reliable Local Governments

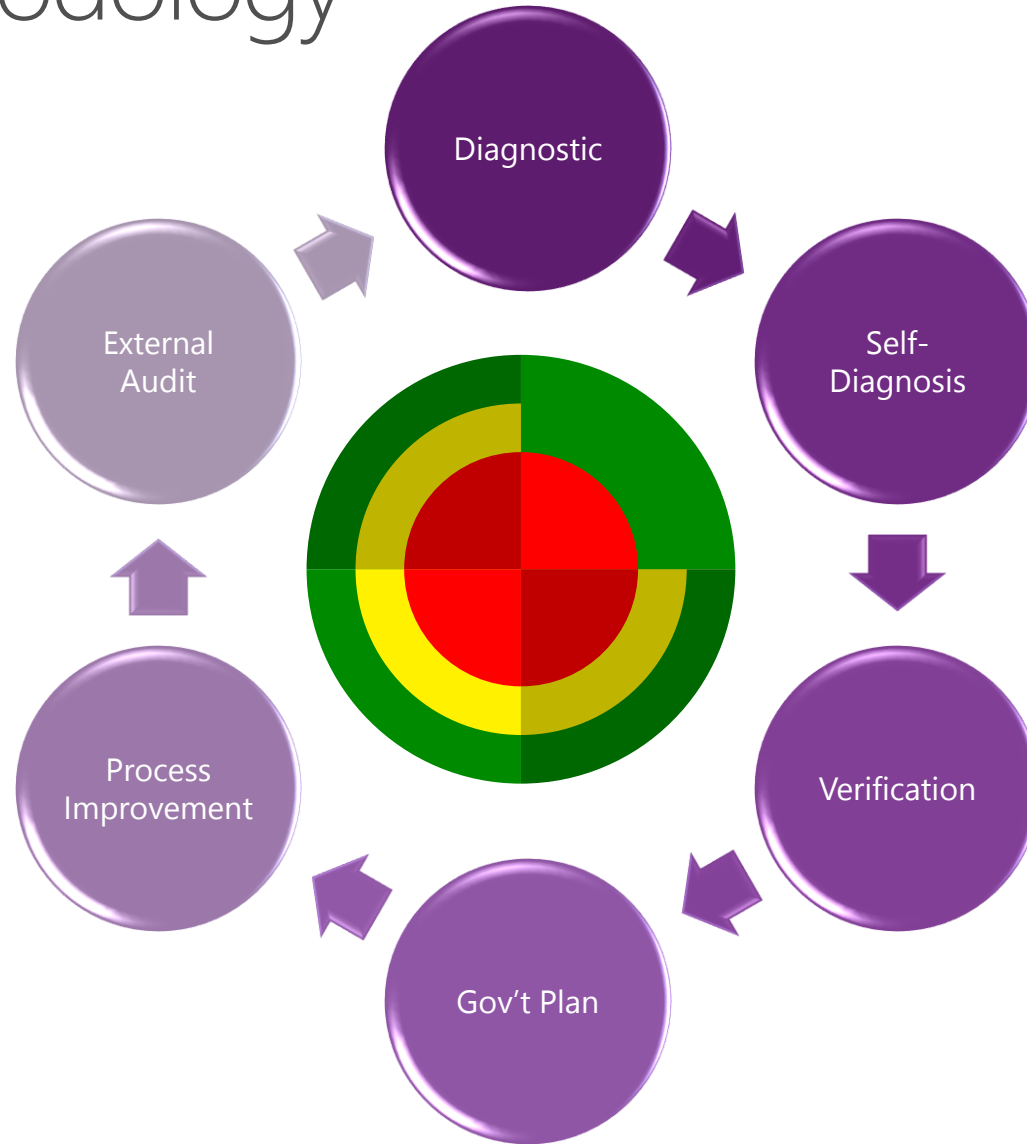
Indicators of Sustainable Environmental Development (4)



Categories	Red	Yellow	Green
1. Monitors air quality	There is no local government authority exercising any control over air polluting activities, such as a burning pastureland and waste materials.	There is a mechanism to prevent burning of pastureland and waste materials, and there are periodic inspections of polluting emissions.	There are regulations and programs for mobile and fixed pollutant emission inspections.
2. Responsible for waste collection and disposal	There is no waste collection service and waste disposal areas are open to the elements.	There are some waste collection routes. Waste disposal is controlled (the entry of materials/waste is supervised, and there is a guard.)	There is a waste collection system covering most of the local government. There is a sanitary landfill with protection for the air and ground water.
3. Conscious of local government image	There are no activities to care for the surroundings.	There are periodic activities, every 6 months to a year, to improve the esthetics of the local government's surroundings.	There are programs to improve the local government's environment with significant and documented results, including a budget item.
4. Protective of natural resources	There is no inventory of the natural resources of the local area, nor are there any protective activities.	There is an up-to-date documented diagnosis, at least every 3 years, on matters related to the municipality's natural resources.	There is a program for conservation and use of natural resources, with significant results and personnel responsible for implementing it.
5. Effective land management system	The local government is growing without any urban planning or regulations.	There is an inoperative, obsolete, and/or unapproved land management plan.	There is an accessible land management plan, updated at least every 5 years, and the local government authorities supervise its implementation.
6. Responsible for water	The sources of water supply are unprotected, there are no consumption and supply forecasts, and waste waters are discharged untreated and uncontrolled.	The only protection in place pertains to contamination of water supply sources; waste waters are collected and discharged at a point.	There are programs for the conservation and maintenance of water supply sources, both underground and surface waters, and most of the waste waters are treated. There are also regulations and a financially sound water operating agency, authorized by the local government.
7. Monitors and is responsible for soils	There is no diagnosis for erosion problems, loss of plant cover, and acidification of the soil.	There is a documented diagnosis performed at least every 3 years. There are periodic activities for control of erosion, deforestation, and use of fertilizers destructive to the soil.	There are programs, with significant, documented results, for control of erosion, conservation, soil recovery, and reforestation.
8. Environmental education promoted	There are no local governments programs on environmental education.	Only a few community programs on environmental education have been conducted in specific areas of the local government (cleaning of river basins, with community participation). World environment day.	There is an official environmental education program in force, in the schools and the community, including activities contributing to improvement and conservation of the environment.

Building a roadmap for success

ISO-18091 Methodology



A nighttime cityscape with light trails from cars on a road, illuminated buildings, and hills in the background under a dark sky. A large purple semi-transparent box is overlaid on the right side of the image.

Let's work together to
re-imagine 'What's
Next' for Cities

Thank You!

- Erick Stephens
- CTO Asia-Pacific, Public Sector
- @estepmen