



**e-Agriculture initiatives of
CABI in Asia & Africa**

Direct2Farm, mNutrition & mPlantwise

Mr. Chan Fook Wing, 29 – 31 August, 2016, FAO / ITU E-Agriculture Solutions Forum

Plantwise – Phu, Vietnamese cocoa farmer



Ben Tre Province, Vietnam

Direct2Farm is an ICT based Knowledge Service that helps farmers to acquire new skills, learn new technologies, discover new business opportunities and improve livelihood

2009

- Partnership with IKSL
- ICT intervention in Basmati contract farming in Haryana

2011

- Inception of Direct2Farm project
- Quality assurance service to IKSL

2013

- Scale up of Direct2Farm project
- Development of Direct2Farm knowledge repository database

2015

- 10 Million messages sent to farmers
- M&E reported 80%+ farmers derived benefits from service

2010

- Agri-extension knowledge database design for IKSL
- Setting up standards and SOPs for agri-extension communication

2012

- GSMA Funded mKisan project together with ILRI & Digital Green
- Inception of Cafe Move! e-Extension for coffee growers together with Coffee Board

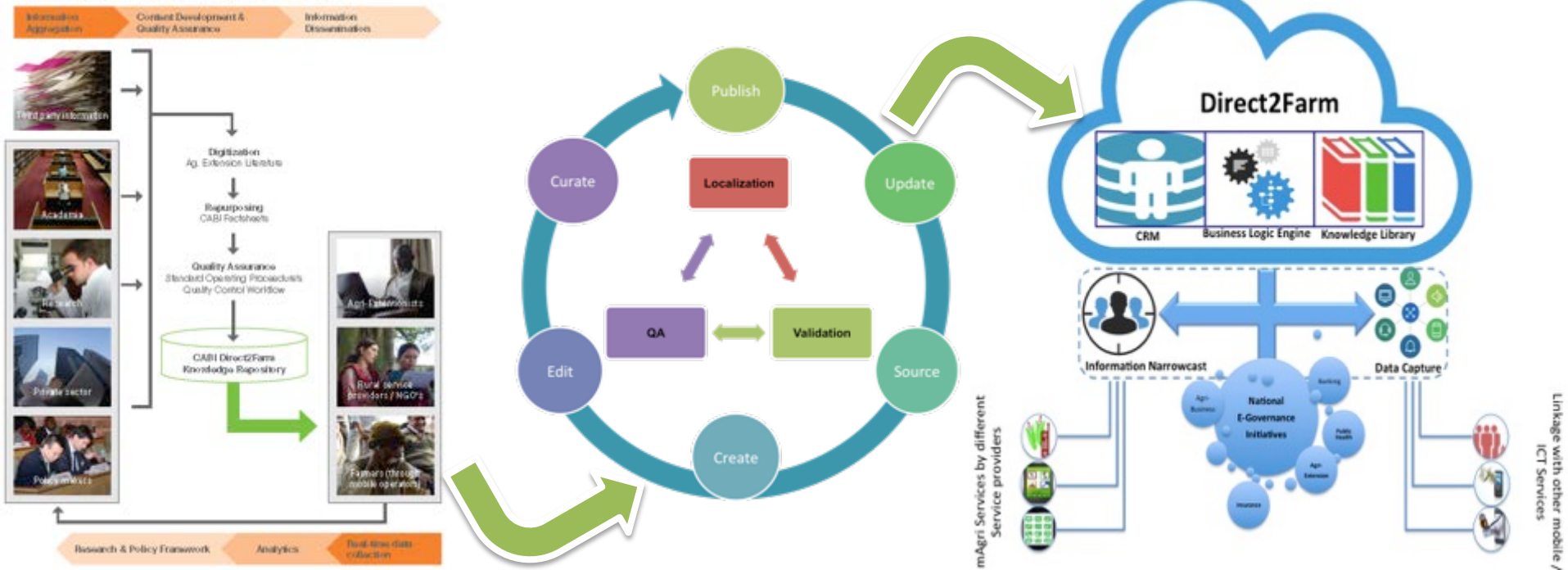
2014

- Direct2Farm Knowledge Service Launched in India
- 400K farmer household digitally profiled

2016++

- Direct2Farm & Plantwise convergence
- New service m-Plantwise
- Apps and other data intensive products launched

Direct2Farm Information Schema



E-plant clinics – basic elements

WiFi/3G Tablet

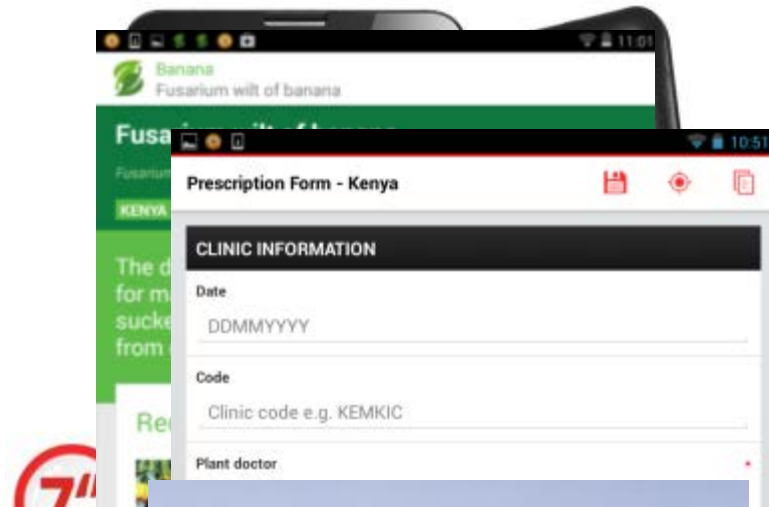
App to deliver info.

App to collect data

Phone connection

SMS messaging
to farmers

Training



The mNutrition Initiative

- Aims to improve maternal and child nutrition
- Will deliver a range of mobile services covering areas of nutrition, agriculture and healthcare
- Will entail the launch of behaviour change communication services, agricultural extension services, population-level registration and data tracking
- Implemented in 12 countries (8 mHealth – 6 mAgri)

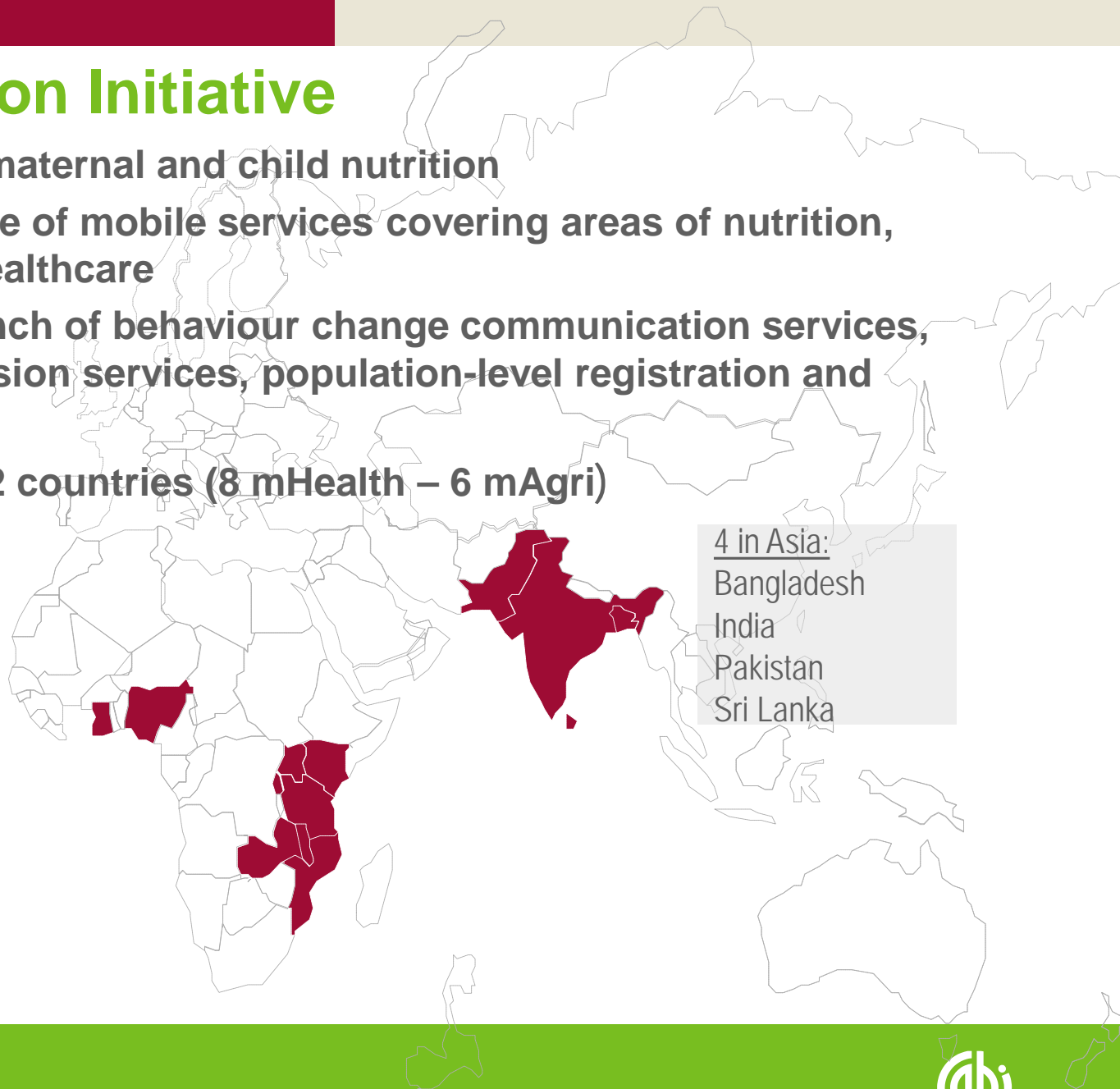
10 in Sub-Saharan

Africa:

Ghana
 Malawi
 Mozambique
 Nigeria
 Tanzania
 Kenya
 Rwanda
 Uganda
 Zambia

4 in Asia:

Bangladesh
 India
 Pakistan
 Sri Lanka



Pestpoint

A place to form networks and manage identification enquiries.



A screenshot of the Pestpoint web interface. The page features the Pestpoint logo and navigation links for 'Networks', 'People', and 'About'. A large image of a pest (potatoes) is displayed, with a smaller thumbnail below it. To the right, a metadata table shows details for the pest, including coordinates, host, affected part, pest type, and symptom. A 'Flag' button is visible. Below the main image, there is a section for 'My Networks' with a list of items like 'ACIAR Test', 'Myanmar PPD', and 'Plantwise Test Network'. At the bottom, there is a section for 'Enquiry Id 13218' and 'Network Myanmar PPD', with a 'Not yet identified' status and a map showing the location.

What is Pestpoint?

- Front-line tool for pest and disease identification and diagnosis
- Uses the power of networks and collaborators to identify and manage pest identification enquiries
- Enquiries are saved to a database for later searches and export
- Uses existing IT tools eg. computers and tablets to access the system
- Integration with wired and wireless microscopes
- Introduction to and capacity building tools in remote diagnostic systems
- Strengthens linkages between national extension / plant health staff to regional collaborators and regional taxonomic expertise

Plantwise – Plant doctor simulator app



