

The following is intended to outline our general product direction. It is intended for information purposes only, and may not be incorporated into any contract.

PRIVACY AND CONFIDENTIALITY NOTICE

Information contained in this communication is confidential, legally privileged, patented or under patent registration and is proprietary to PROGIS™.

The receiving party agrees that it is not permitted to sell, license, develop or otherwise exploit any parts, products or services, documents or information of this document in whole or in part.

The recipient is informed not to disclosure, copy, distribute or take any action in reliance on the content of this information.

It is not a commitment to deliver any material, code, or functionality, and should not be relied upon in making purchasing decision.

The development, release, and timing of any features or functionality described for PROGIS's products remains at the sole discretion of PROGIS™.



**Agro – Forest – Environment - ICT for
entire countries – COOPERATION
between public, private, NGOs and
intergovernmental organizations
needed**

**AGRICULTURE SOLUTIONS FORUM 2016
Organized by FAO and ITU
Bangkok / Thailand, 29.-31.8.2016**



Global Nutrition Challenge

Political

- 2050: 9,5 billion people & no hunger = 100% nutrition increase
- Global Warming & Climate Change (negative externalities)
- Urbanization and Health (smart cities & smart rural areas integration)
- Biodiversity (active risk management / diversification like in finance)
- Land degradation and desertification (land becoming a scarce good)
- Water services for Health (water becoming a scarce good)

BOTTOMLINE

- Large-scale and global environmental hazards to human health urge decision makers to move from observation to application
- Prevention is better than Cure



Agenda

- Introduction
 - Need for holistic applications
 - Overview of apps and benefits
- Expert Models and
 - NEW: Circular Flow Management, NDVI, Pattern recognition
- Conclusion
 - Technology integration needs
 - Stakeholder cooperation needs
- PPP models and Commons
- Education and Implementation of pilot-projects



Introduction

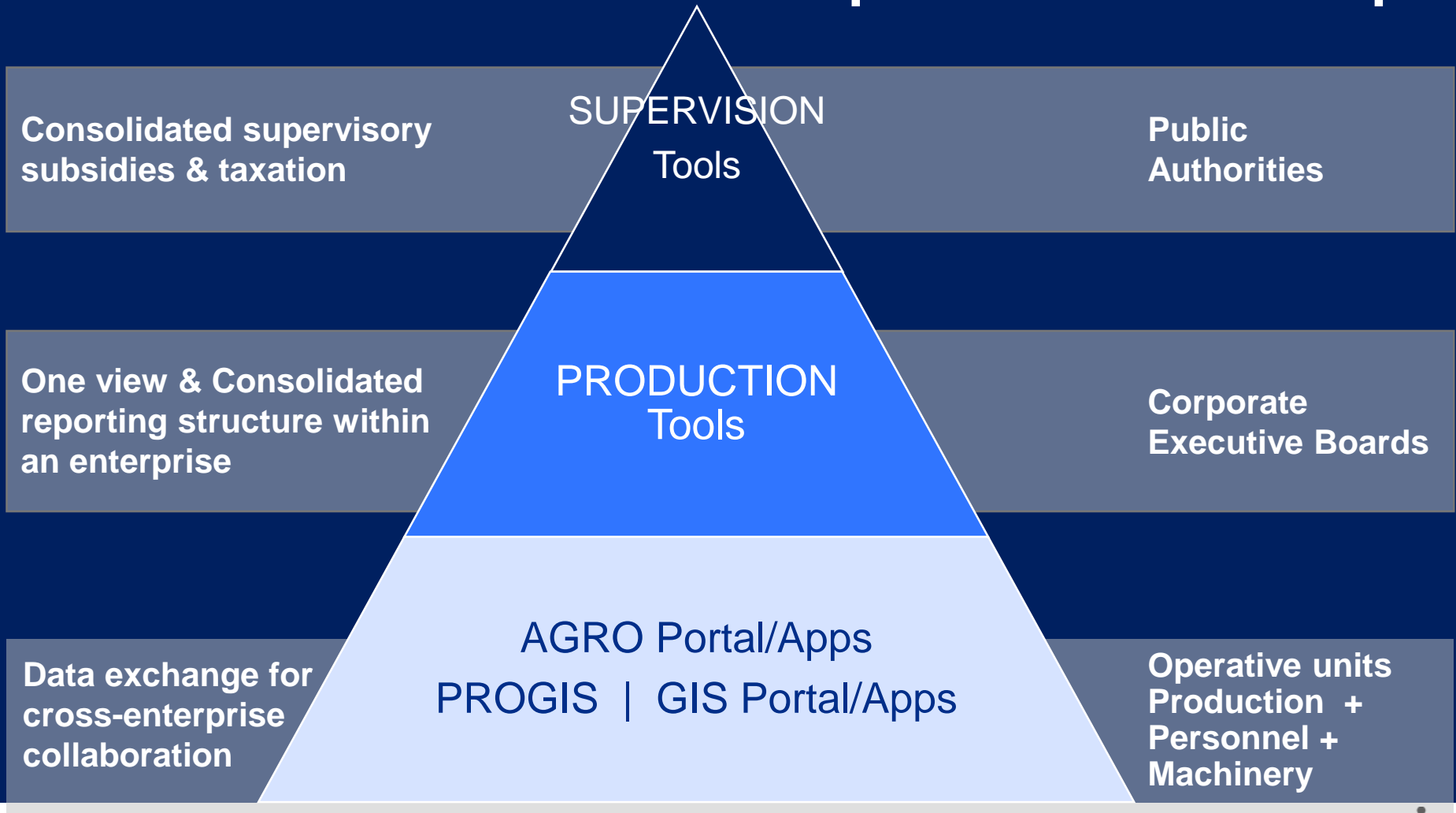
.GIS based AGRO DATA solution
for steering and supervision of
sustainable growth in

- Time WHEN
- Location WHERE
- Resources WHAT

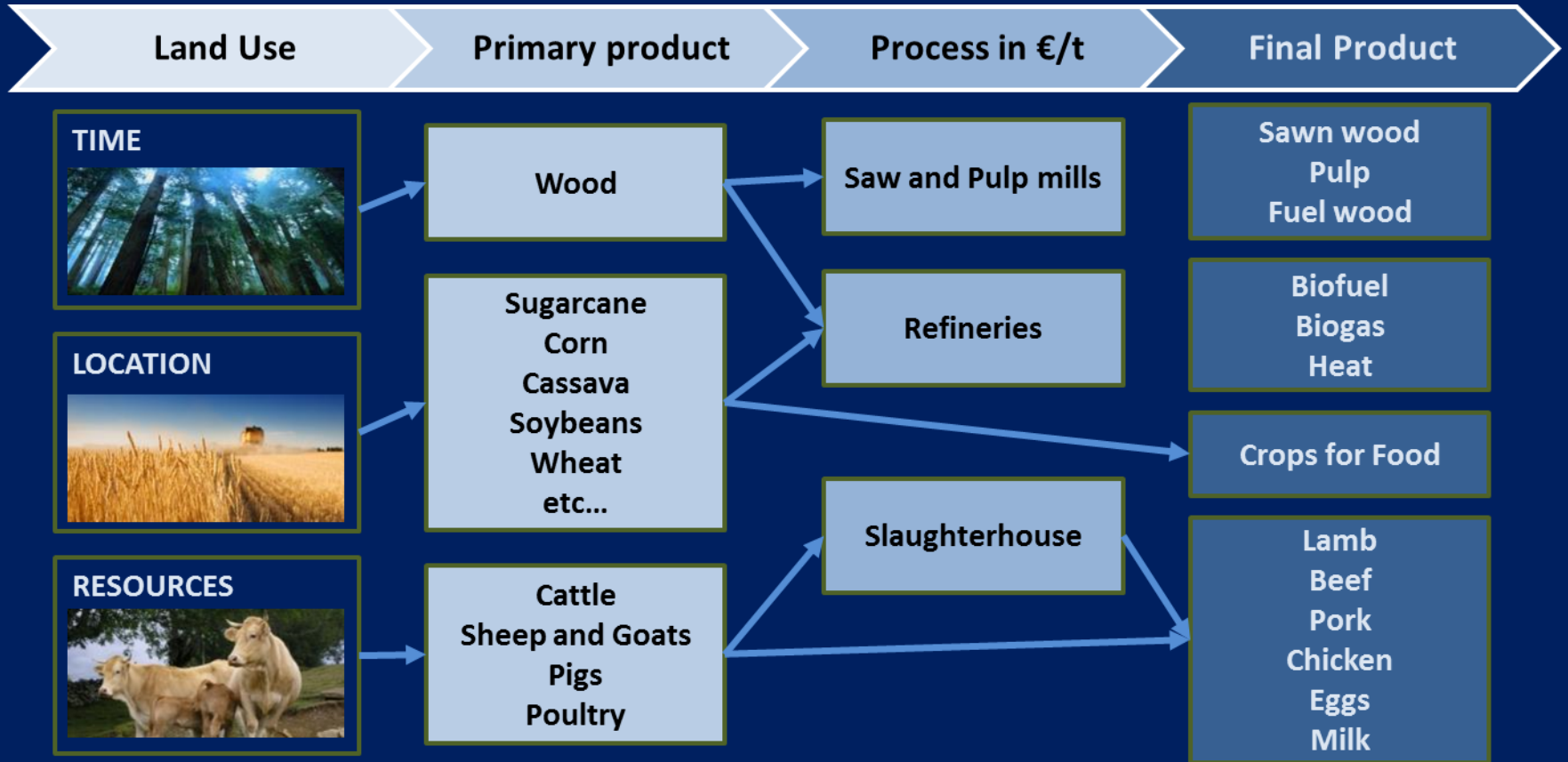


Participants | vertical

top down – bottom up



Participants - horizontal



- **TRACE & TRACK DB**



Steering & Supervision

NATURAL RESOURCES
FINANCIAL RESOURCES
KNOW HOW RESOURCES

- Human Resources
 - Proactive Education politics
 - Development tracking
- Environment & ICT
 - Optimization of usage
 - Dynamic models & tracking
- FINANCE | SUBVENTIONS | TAX
 - Real time production data & historical data matching
 - Active risk management (all levels!! incl. environment)



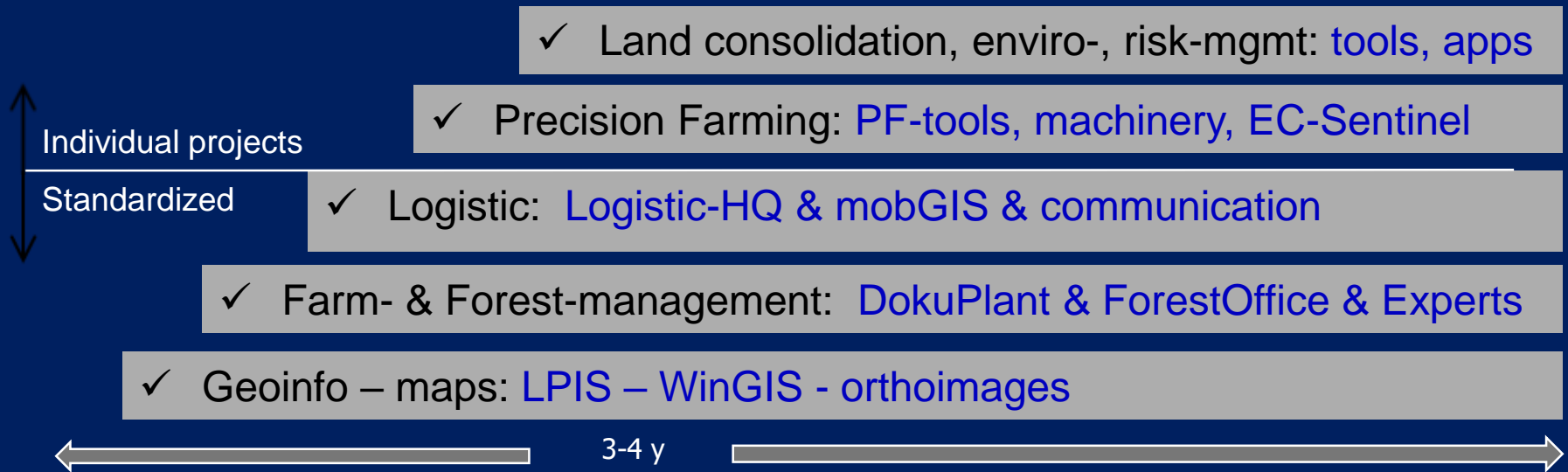
Features for Steering & Supervision (PUBLIC & PRIVATE)

- LOCATION DB [MAPS]
 - Digitalization integrated “Add-in” for cadastral data
- TIME DB [PLANNING]
 - Data storage for tracing development and movements
- RESOURCES [ASSETS]
 - HR [human resources i.e. farmers, consultants, etc.]
 - FIN [financial recourses i.e. equity, debt]
 - MACHINERY [equipment, hardware, software]
 - PRODUCTION [input, output, quality, quantity]



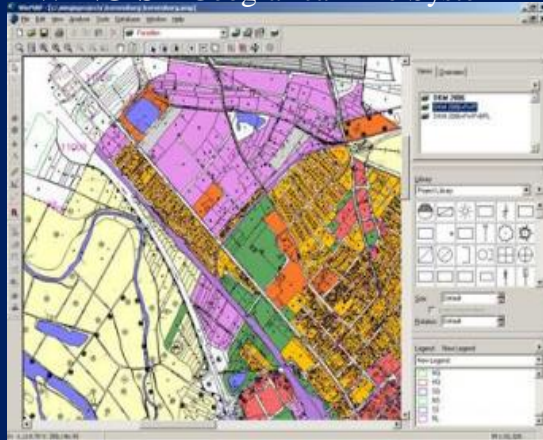
ICT PRODUCTS & PROCESSES

TASKS
TOOLS
PREPARATION
MILESTONES



APPLICATIONS AVAILABLE TODAY

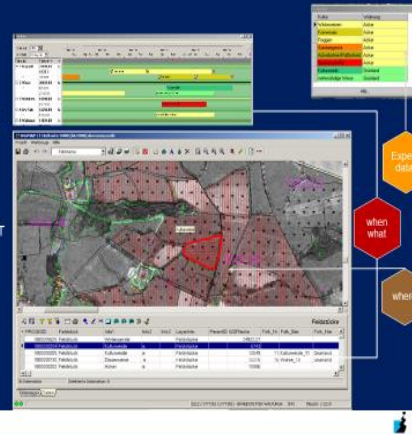
- WINGIS – Geographical Info System



- DokuPlant – Farm-management

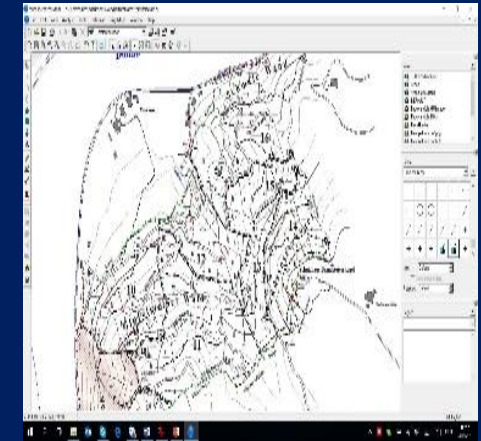
ICT TOOLS

FARM-
FORESTRY-
ADVISORY-
MANAGEMENT



© PROGIS Solutions | Intro 2016 | S2A

- ForestOffice - Forest inventory



22

ICT TOOLS & THEIR INTEGRATION

INTEGRATED
NATIONAL FARM
FORESTRY
ADVISORY
MANAGEMENT

for

PRECISION FARMING
&
INTERNATIONAL
COMPETITIVENESS



© PROGIS Solutions | Intro 2016 | S2A

24

- Technology Integration

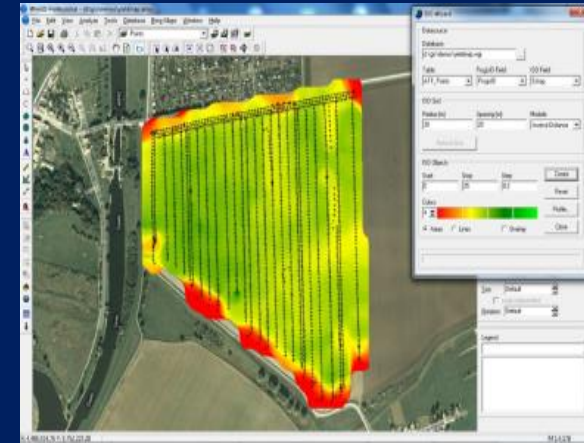
Logistics AGRO - FOREST - LOGISTIC

Harvester
Loader Forwarder
Truck
Mobile Office

Largest EC project: 45 cooperatives, using 100+ harvesters with mobGIS handling 100k+ datasets for 40.000 farmers on 40.000km² - all online with update all 30 seconds!

LAN: 2014 GERMANY
Country coverage in 2014 (170 stations)
Precision farming on top
Mobile devices (tablet-PC, smartphone)

- Logistics and mobGIS



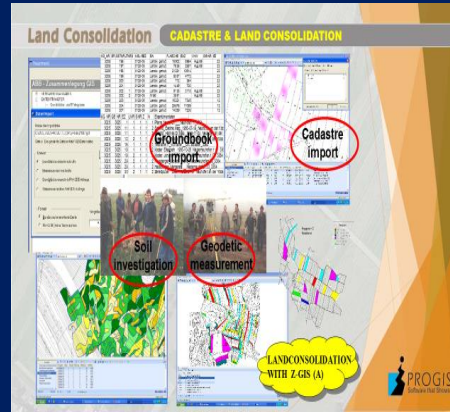
- Precision Farming Tools



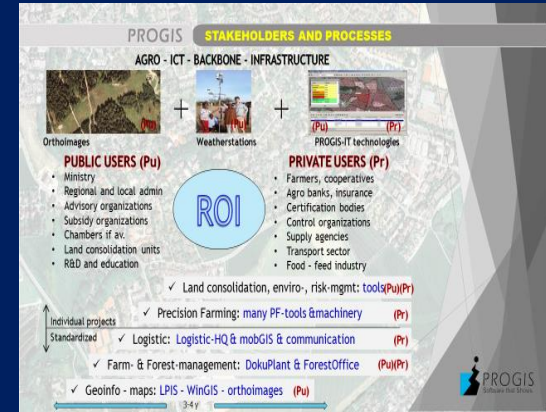
- Mobile technologies



- Land consolidation apps



- Stakeholder Cooperation – know how



- Environment and natural risks
- Apps and know how



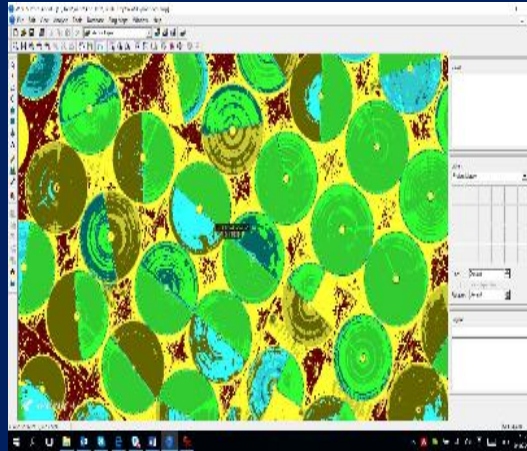
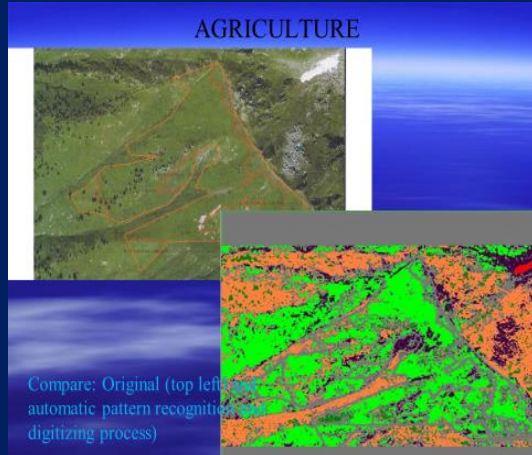
- Circular Flow Management
- + lab with NIRS technology



- Better marketing - Farmer food chains



NEW apps



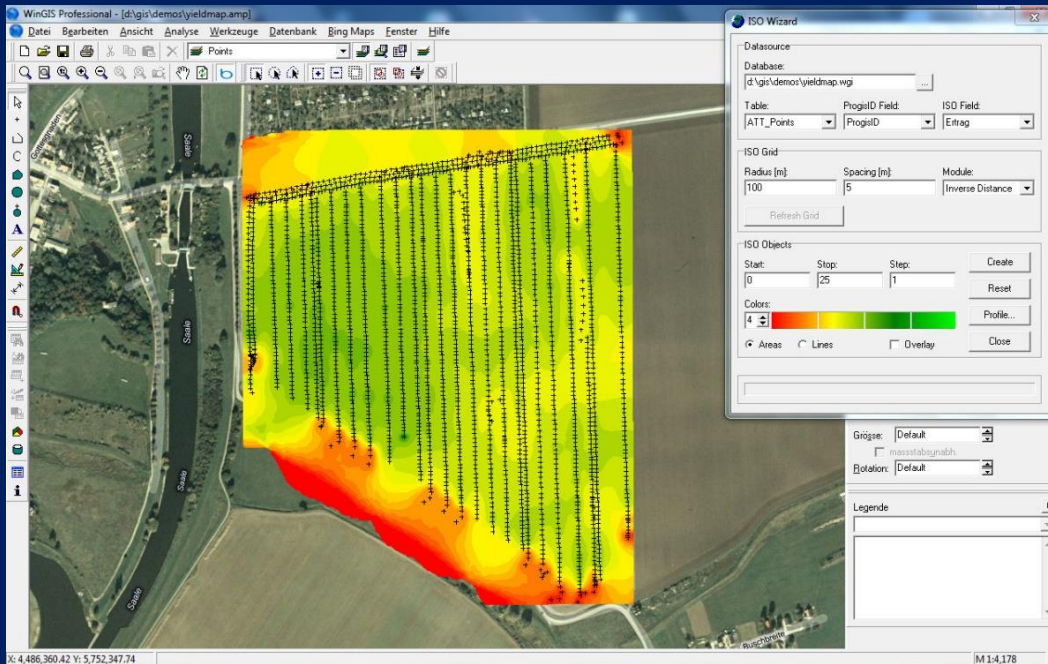
- NEW – aut. pattern rec. + digitizing
- NEW: EC Sentinel II - growth-index
- Franchise based food chain – Foodie farmer's gourmet + inet + logistics

- Technology & organizational consultancy – entire countries or on demand
- Education models - postgraduate education: farmers, advisors, Universities

40 years ICT in agriculture – forestry – environment – natural risk management
500 man-years of experience



TOOLS | LOCATON & TIME



Location related data

- Ortho image
- Cadastral image
- Planning image
- Production image
- Harvesting image
- Financing data

Time related data – plan/done

1.3.2016

Tractor
plough

Tractor
Seeding machine
NPK fertilizer

5.5.2016

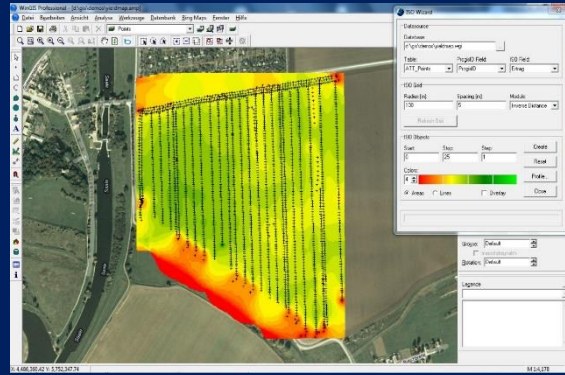
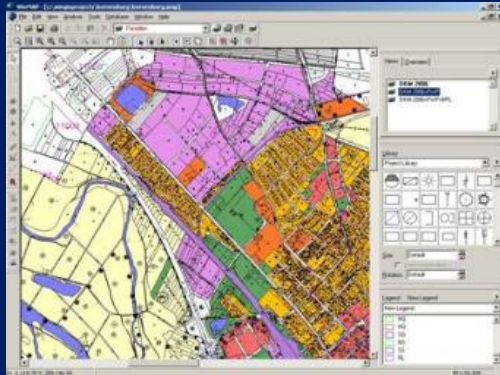
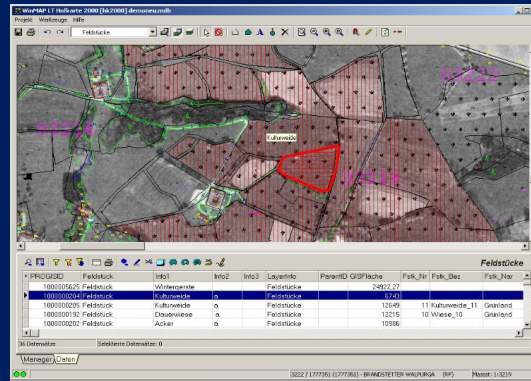
Tractor
Sprayer
Pesticide

30.9.2016

Harvester



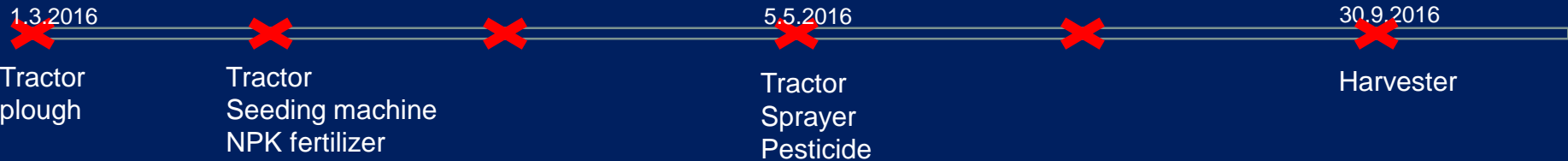
TOOLS | LOCATON & TIME



DATABASES

- Ortho image
- Cadastral image
- Planning image
- Production image
- Harvesting image
- Financing data

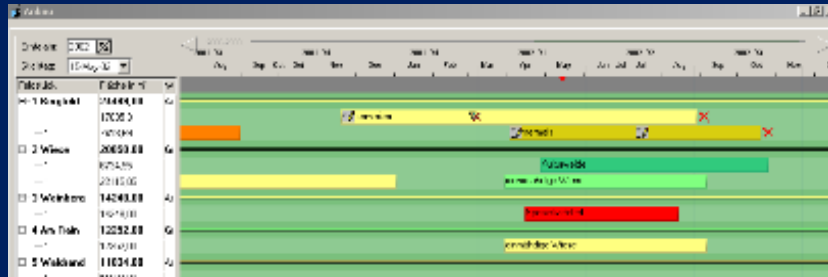
Input & Output visualised in:
time & location & € data



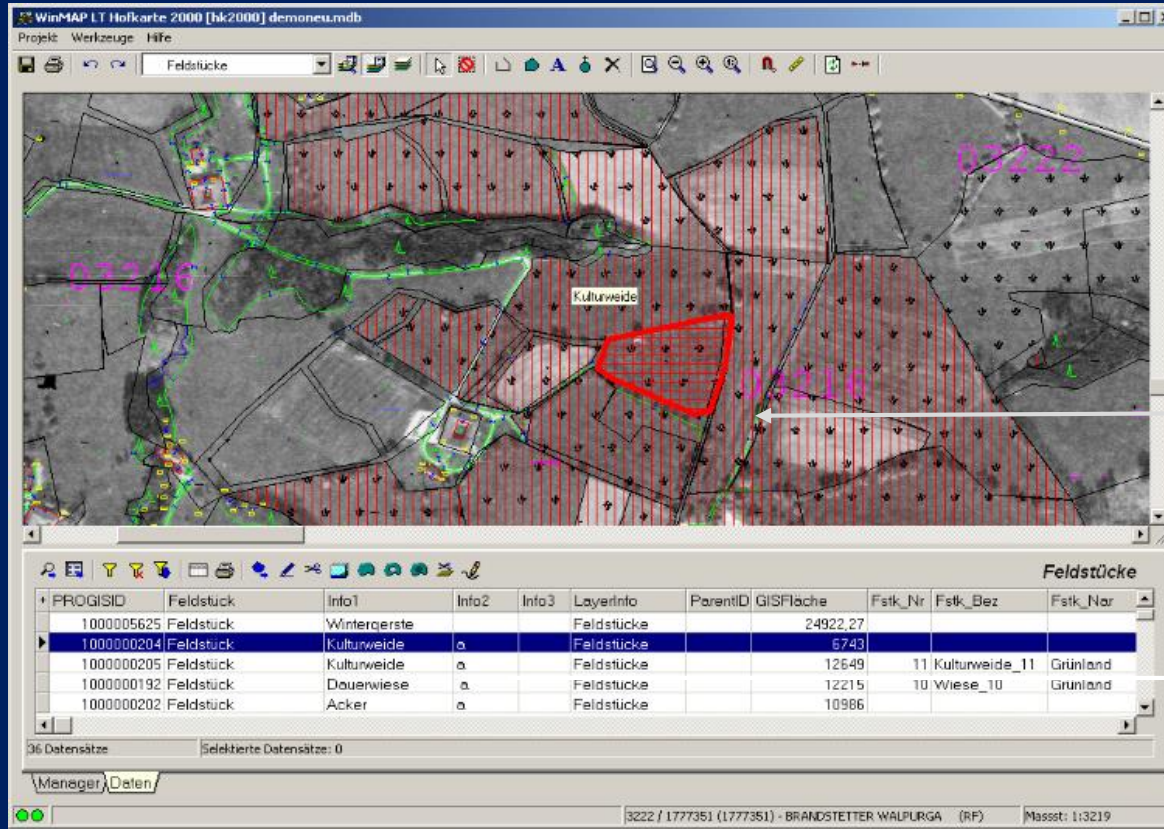
ICT TOOLS:

- location
- time
- expertise

FARM-
FORESTRY-
ADVISORY-
MANAGEMENT



Kultur	Widmung
Winterweizen	Acker
Körnermais	Acker
Roggen	Acker
Sommergerste	Acker
Ackerbohne (Puffbohne)	Acker
Speisekartoffel	Acker
Kulturweide	Grünland
mehrmäßige Wiese	Grünland



Expert data

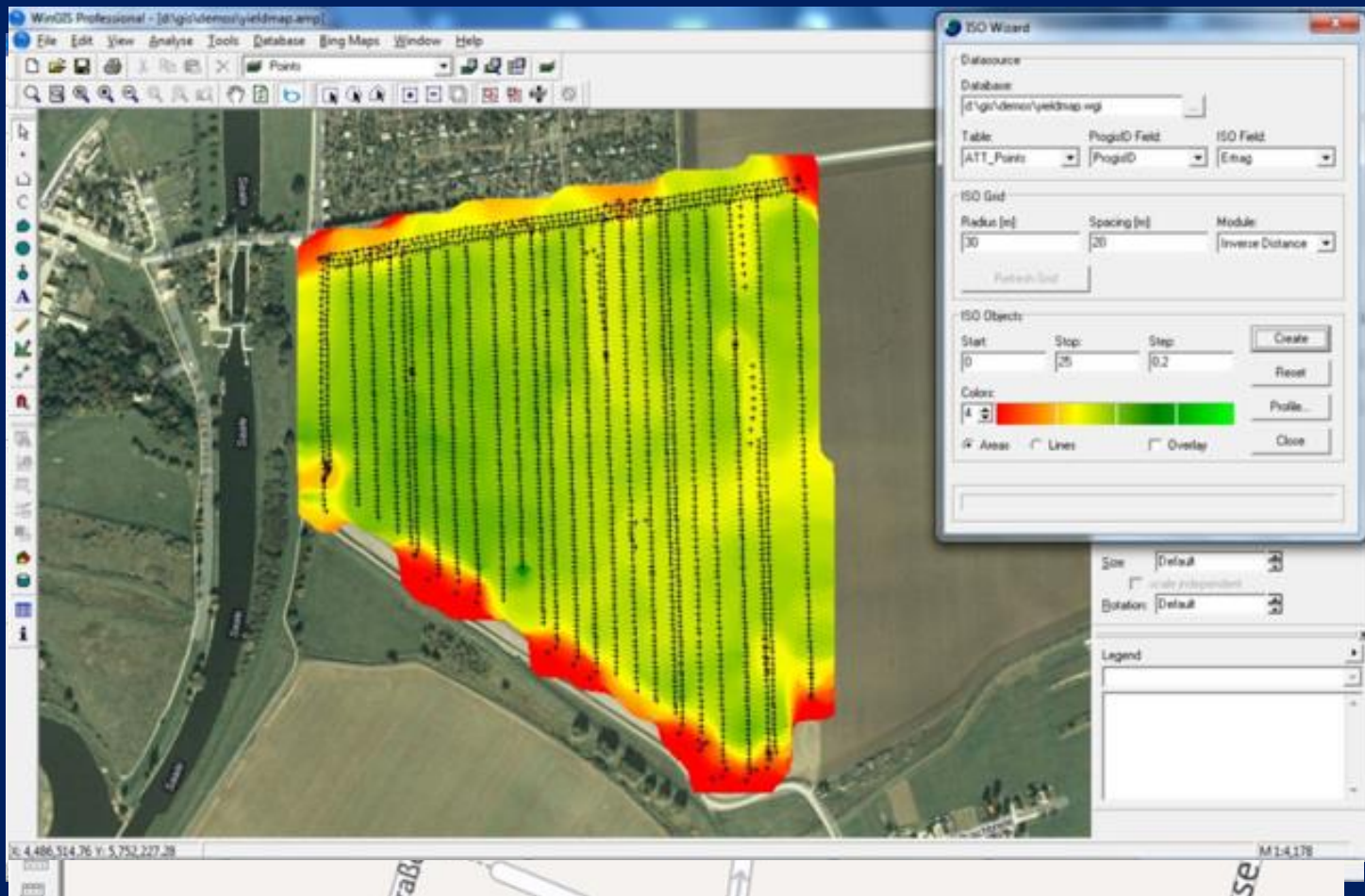
when what

where



ICT TOOLS

WinGIS
for
Vector &
Raster
data



I. orthoimage + cadastre and houses

II. orthoimage + BING road map

III. roadmap + WinGIS location search

IV. thematic map done with Intl DB

V. LPIS dataset

VI. GPS tracking result

VII. laser scan dataset

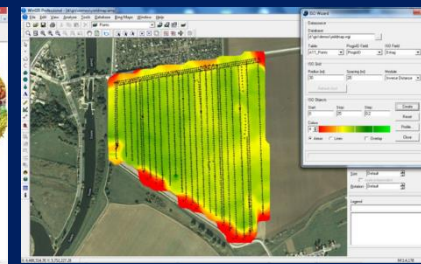
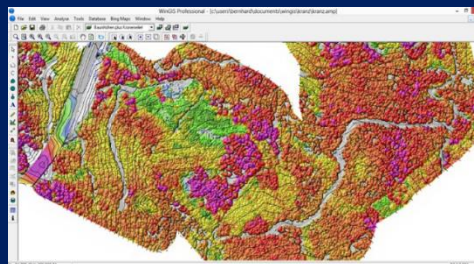
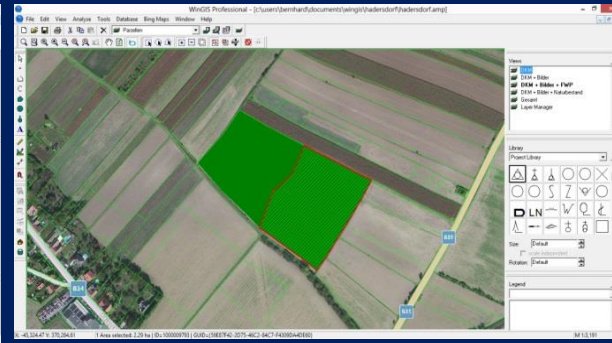
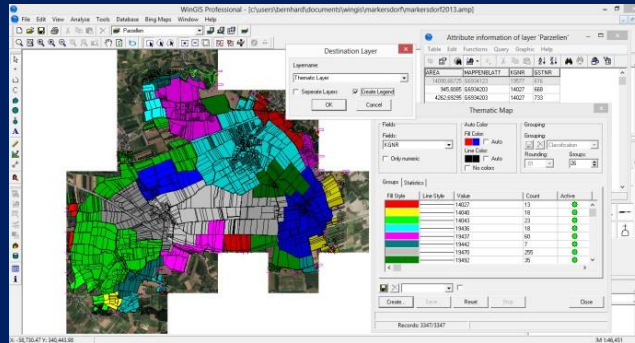
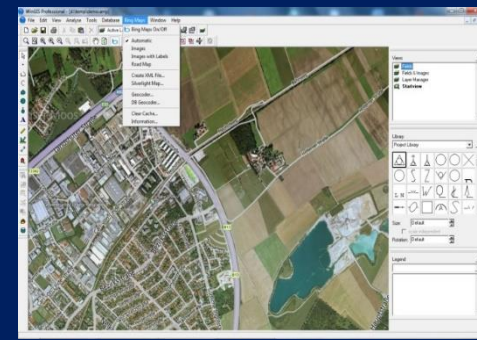
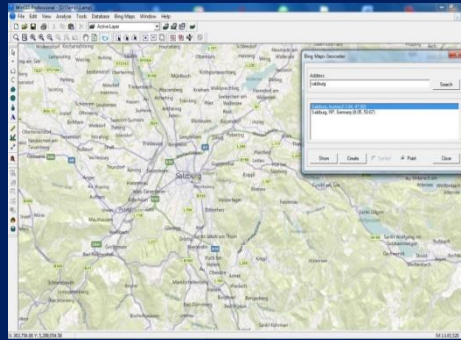
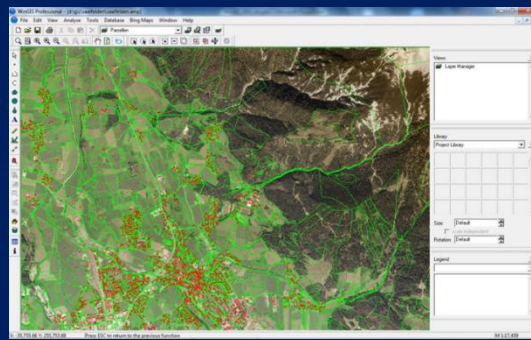
VIII. harvest map + machine tracking

location



ICT TOOLS

WinGIS
for
Vector &
Raster
data



- I. orthoimage + cadastre and houses
- II. orthoimage + BING road map
- III. roadmap + WinGIS location search
- IV. thematic map done with Intl DB

- V. LPIS dataset
- VI. GPS tracking result
- VII. laser scan dataset
- VIII. harvest map + machine tracking



ICT TOOLS

LOGISTICS

DEIMOS (22 m)

SPOT 4 (10-20 m)

SPOT 5 (2.5-5 m)

FORMOSAT-2 (2 m)

TanDEM-X (1 m - 3 m - 18 m)

Pleiades (0.5 m)

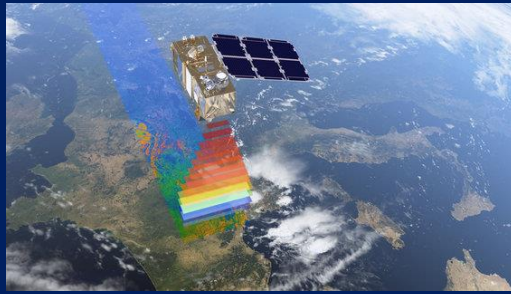
Pass	Time	Altitude	Resolution	Area
1	01:00	350	10	1000
2	01:15	350	10	1000
3	01:30	350	10	1000
4	01:45	350	10	1000
5	02:00	350	10	1000
6	02:15	350	10	1000
7	02:30	350	10	1000
8	02:45	350	10	1000
9	03:00	350	10	1000
10	03:15	350	10	1000
11	03:30	350	10	1000
12	03:45	350	10	1000
13	04:00	350	10	1000
14	04:15	350	10	1000
15	04:30	350	10	1000
16	04:45	350	10	1000
17	05:00	350	10	1000
18	05:15	350	10	1000
19	05:30	350	10	1000
20	05:45	350	10	1000

just in
time

location



ICT TOOLS & THEIR INTEGRATION



INTEGRATED
NATIONAL FARM
FORESTY
ADVISORY
MANAGEMENT



for

PRECISION FARMING
&
INTERNATIONAL
COMPETITIVENESS



V. PRECISION PREDICTION

VI. PRECISION STEERING

III. PRECISION CONTROL

II. PRECISION URBANISATION

I. PRECISION FARMING



ICT TOOLS Stakeholders

INTEGRATED
FARM
FORESTY
ADVISORY
MANAGEMENT

for

LOCAL
REGIONAL
NATIONAL
PRECISION FARMING



I. LOCAL

- planing, documentation of activities
- energy-, carbon-, nutrient-balance
- cost- profit calculation, inventory
- localized subsidy management
- business plan, insurance data
- thematic maps,

II. REGIONAL

- INTEGRATE VERTICAL/HORIZONTAL:
- Logistics + mobGIS, integrate industry
- Virtual Farming, Precision Farming
- Environment-, risk-management
- (Sub-)regional SAFER-centers
- GlobalGAP, FSC, PEFC, TC,

III. NATIONAL

- USE BOTTOM UP & TOP DOWN:
- OPEN DATA for all users
- TRUST CENTERS – a MUST
- for public and private use
- integrate labs, satellite images, coop..
- with ICT, agro, telecoms (last mile), ...

IV. SUPRA- and INTERNATIONAL

- Cooperation - INTERNATIONAL ORGANIZATIONS
- and INTERNATIONAL SCIENCE AND NGOS



STAKEHOLDERS & PROCESSES

ICT BACKBONE
INTERSECTION
for
PUBLIC USERS
PRIVATE USERS

Supra
National

- UN
 - FAO
 - WHO
- EU

Public

Private

- Ministries
- Regional and local admin
 - Advisory organizations
 - Subsidy organizations
 - Chambers if av.
 - Land consolidation units
 - R&D and education

- Farmers, cooperatives
- Agro banks, insurance
- Certification bodies
- Control organizations
- Supply agencies
- Transport sector
- Food – feed industry



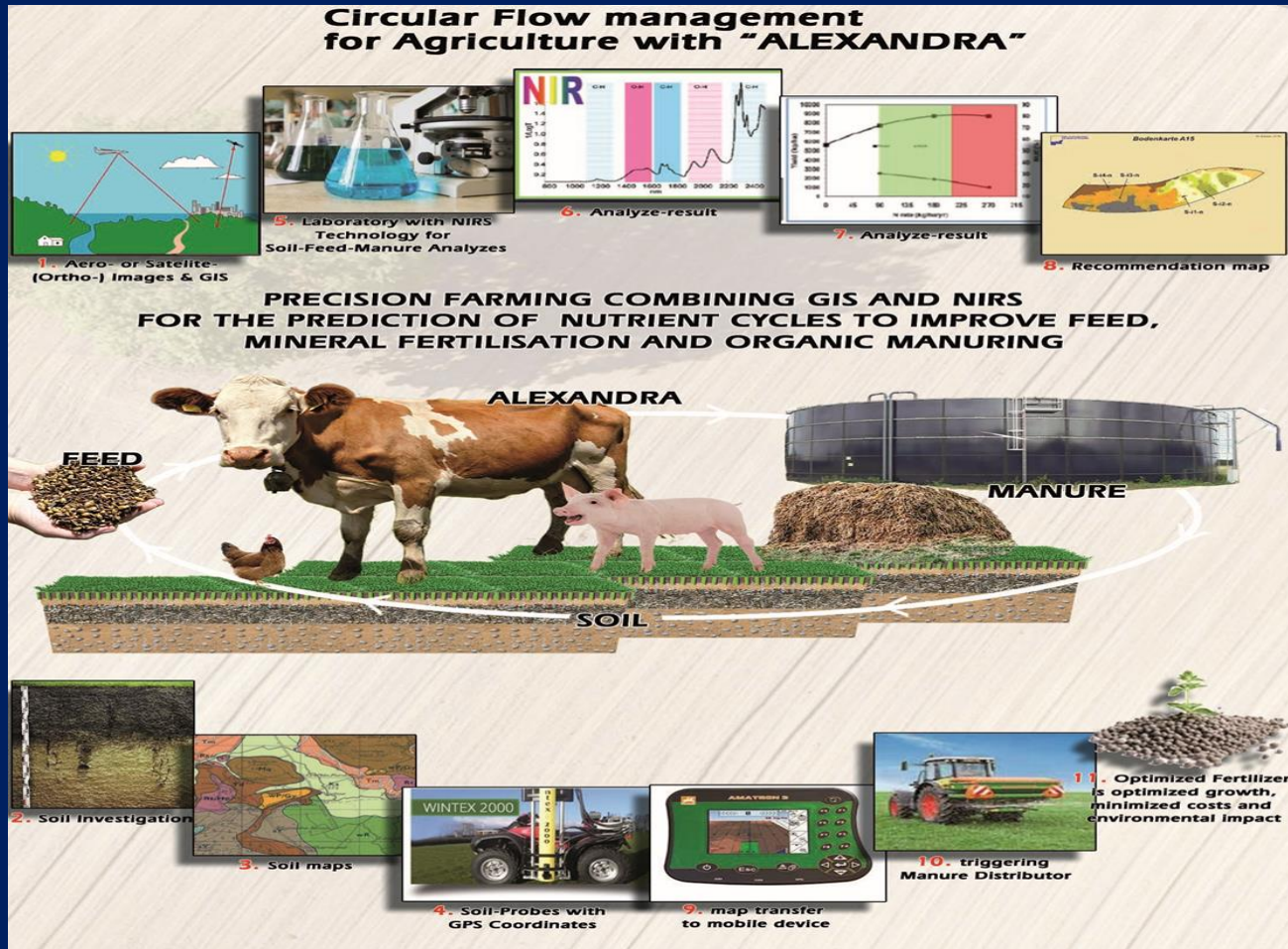
Benefits

- Location and Time integrated production data
- Real Time financial data (by production data)
- Risk Management Tools development
- Powerful features for enhanced
 - Productivity
 - Sustainability
 - Market access and marketability of production
- Steering Tool for environmental & climate risk



Circular Flow Management PROGIS-CFM

LABs



CHALLENGE

The agriculture sector is a strategically unique sector which should ideally be constituted by a network of interacting organizations. In carrying out their activities, such stakeholders have to manage many different and heterogeneous sources of information, such as:

- definition of policies,
- valuation of ecological performances,
- development of sustainable agriculture, crop recollection, and definition of timing and pricing,
- plagues detection.

In this context, future agriculture knowledge management systems not only have to support the direct profitability of agriculture or the environmental protection, but also have to combine and coordinate the efforts and the behaviours of the agri-food industry, consumers, public administrations and wider stakeholders communities.

OSM – rural roads

Atos

www.atos.net

seresco

www.seresco.es

WIRELESSINFO

www.wirelessinfo.cz

CTIC
Centro Tecnológico

www.fundacionctic.org

PSNC
Polski Instytut Sztuki Komputerowej

www.man.poznan.pl

netcad

www.netcad.com

**BUDGAS
TERRAS GAUDA**

www.terrasgauda.com

MJM
Litovel a.s.

www.mjm.cz

PROGIS
PROGIS SOLUTIONS

www.progis.com

INNOVATION FOR RURAL POLICE

www.tdf.tv

enco
engineering & consulting

www.enco-consulting.it

BM consorzio **piave**

www.consorzioimpiave.bl.it



Miguel Ángel Esbrí (Project Coordinator)
Atos Spain, S.A.
C/ Albarracín, 25 - 28037 Madrid (Spain)
Email: miguel.esbri@atos.net
contact@foodie-project.eu

"The content of the brochure reflects only the author's views and the European Union is not liable for any use that may be made of the information contained therein."

www.foodie-project.eu



Farm
Oriented
Open
Data
In
Europe

FOODIE

FARM-ORIENTED OPEN DATA IN EUROPE



This project is partially funded under the ICT Policy Support Programme (ICT PSP) as part of the Competitiveness and Innovation Framework Programme by the European Commission under grant agreement no. 621074



CIP-ICT-PSP-2013-7 Pilot Type B



WinGIS – LUMEN Sentinel II + NDVI Index



LUMEN REAL

General Information

WinGIS



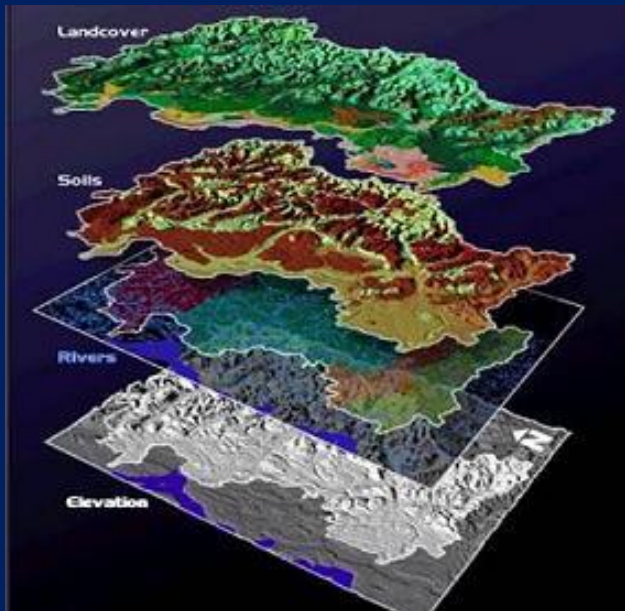
Shows the borderlines, digitized or LPIS of all your fields

LUMEN Real



Updates real pictures of all the fields (5-10 days update)

GIS Layers



LUMEN Pics



Farm-Oriented Open Data In Europe

Images



a multispectral imager with a swath of 290 km,

Bands



set of 13 spectral bands - visible to near IR to shortwave IR

Features



4 spectral bands 10 m, six bands 20m, 3 bands 60 m

Agriculture



provides outstanding 10 to 20m spatial resolution with a 5 (North - South) and 10 (Equator) days revisit frequency



multispectral



Infrared

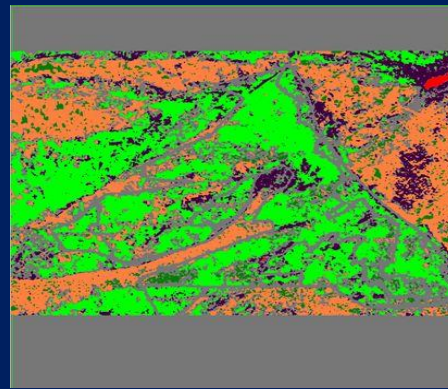


b/w



NDVI-Index





NEW - automatic:
 -pattern recognition
 -layering
 -digitizing
 -store, verify, video



Vector & Raster Data

Transformation | Integrated database | Link to any AX DB [SQL, Oracle, Access, ...] | Multiuser features

Thematic maps & GPS



SHP, DXF, CSV, KML | ISO module, overlay | Enhanced printing | BING-, Google-, Yandex-map-integration

Sensor | Telemetry integration

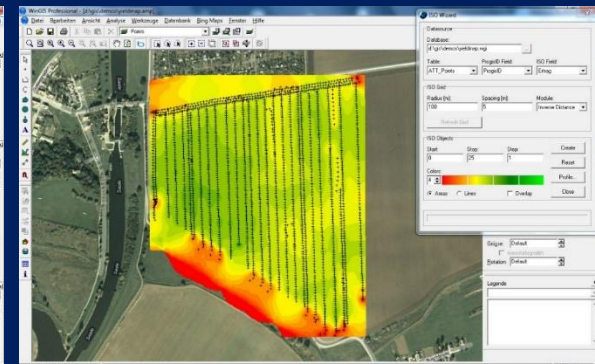
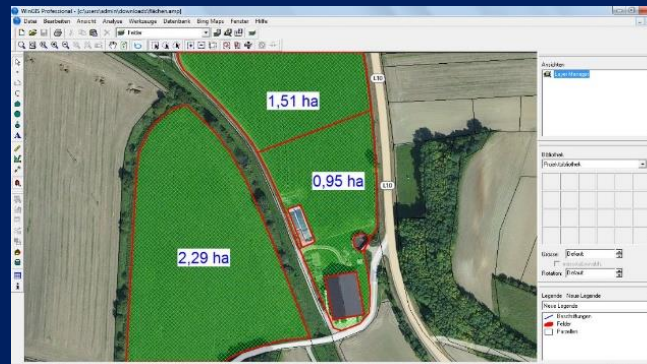
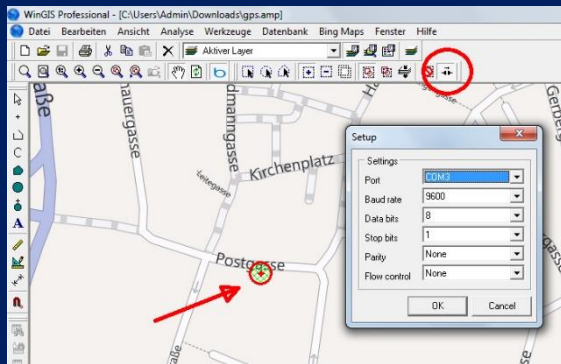


Geocoder, WMS services | Developer tools (SDK) | COM / ActiveX interface | simple access integration | database Connection

Integrated GIS control



Extensive function library, direct access to menu and user interface, customizable GUI and languages | CANVAS mode



TRACEABILITY **for** SUSTAINABILITY
EFFECTIVITY **vs.** EFFICIENCY
TECHNOLOGY INTEGRATION
and
STAKEHOLDER COOPERATION
and
EDUCATION

www.progis.com





QUESTIONS
ANSWERS

www.progis.com

