



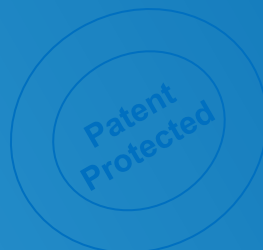
The TCS PRIDE™ Model – Empowering Farmers!

Using Digital Five Forces to Revolutionize Agriculture:

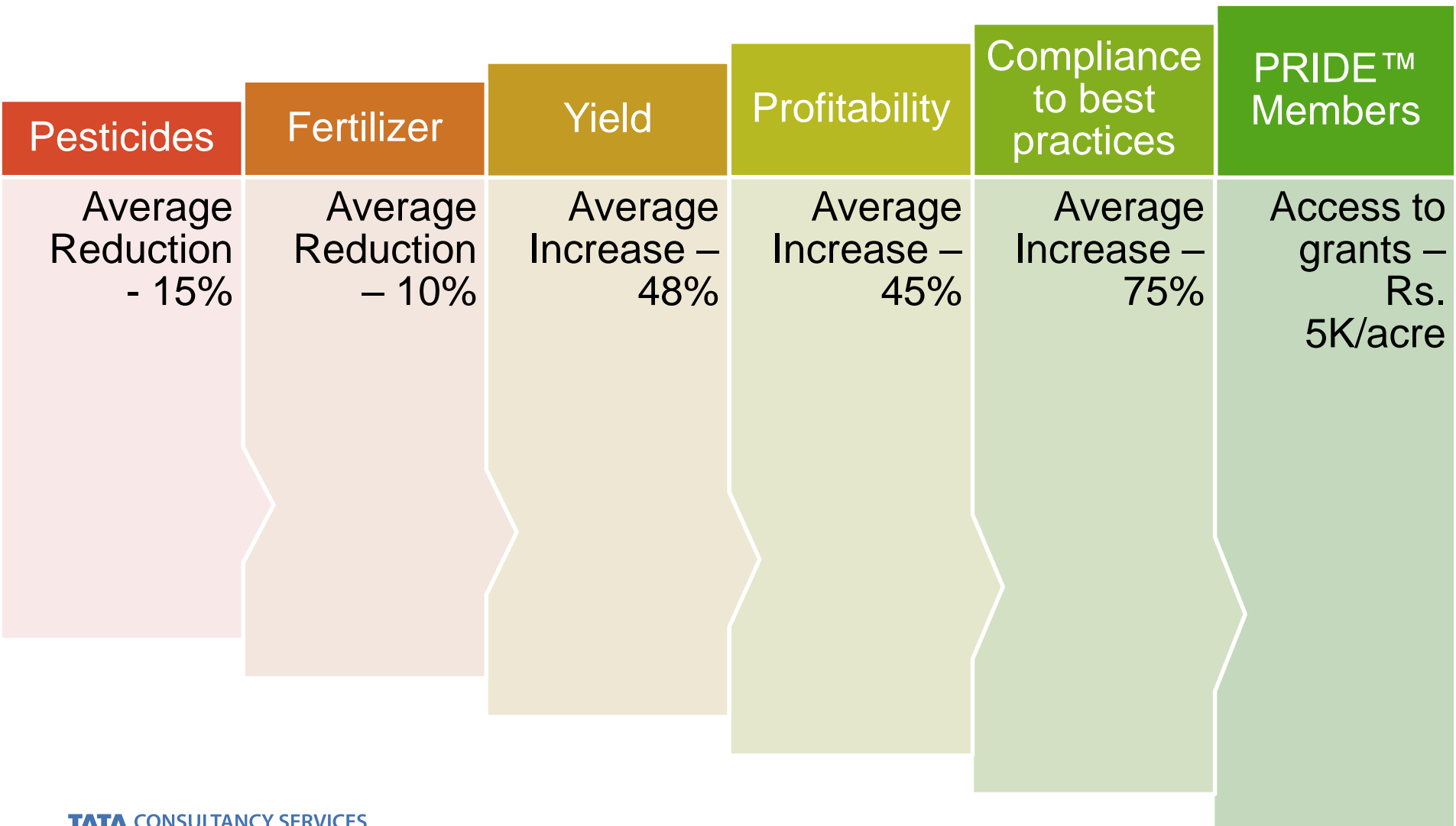
- Better Prices
- Cost Reduction
- Mitigate Risk
- Improve Supply Chain efficiency
- Increase Yield



*Srinivasu Pappula, Ph.D., CISSP.
Global Head – Digital Farming
Initiatives, TCS*



Impact on Farmers – To Date



TCS Digital Farming Initiative - Mission

Improve farmer livelihoods through technology and partnerships

“Smart Villages”

“Climate Smart”
& “Market Smart”

Confluence of Digital Five Forces, GIS & Proprietary Agri Knowledge Base

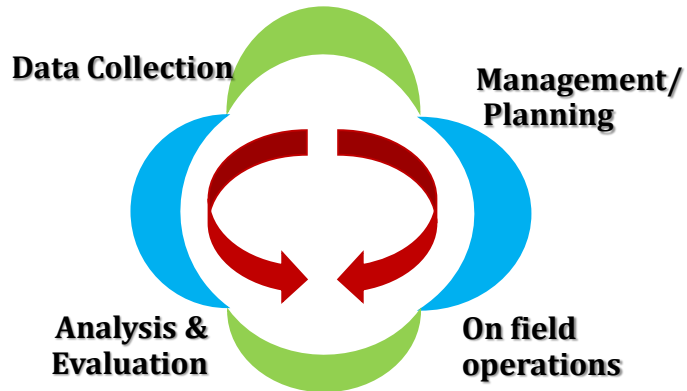
Leverage collective power of partners and farmers to create sustainable ecosystems – PRIDE™s

Digital Transformation Powered by the TCS Digital Farming Platform

TCS Digital Farming Initiative - Objectives

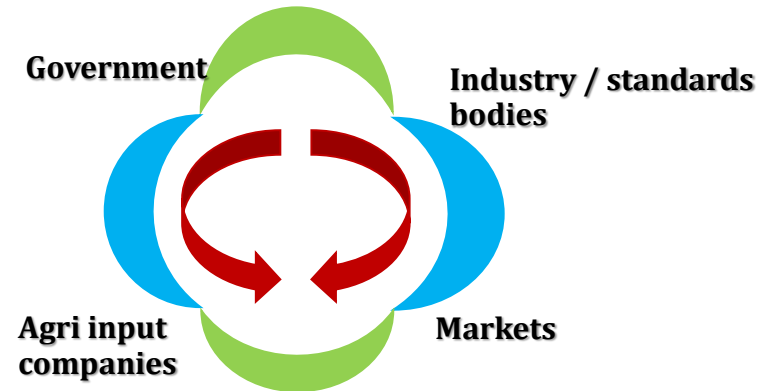
Objective 1: Improve crop production, efficiency

through cyclic optimization process

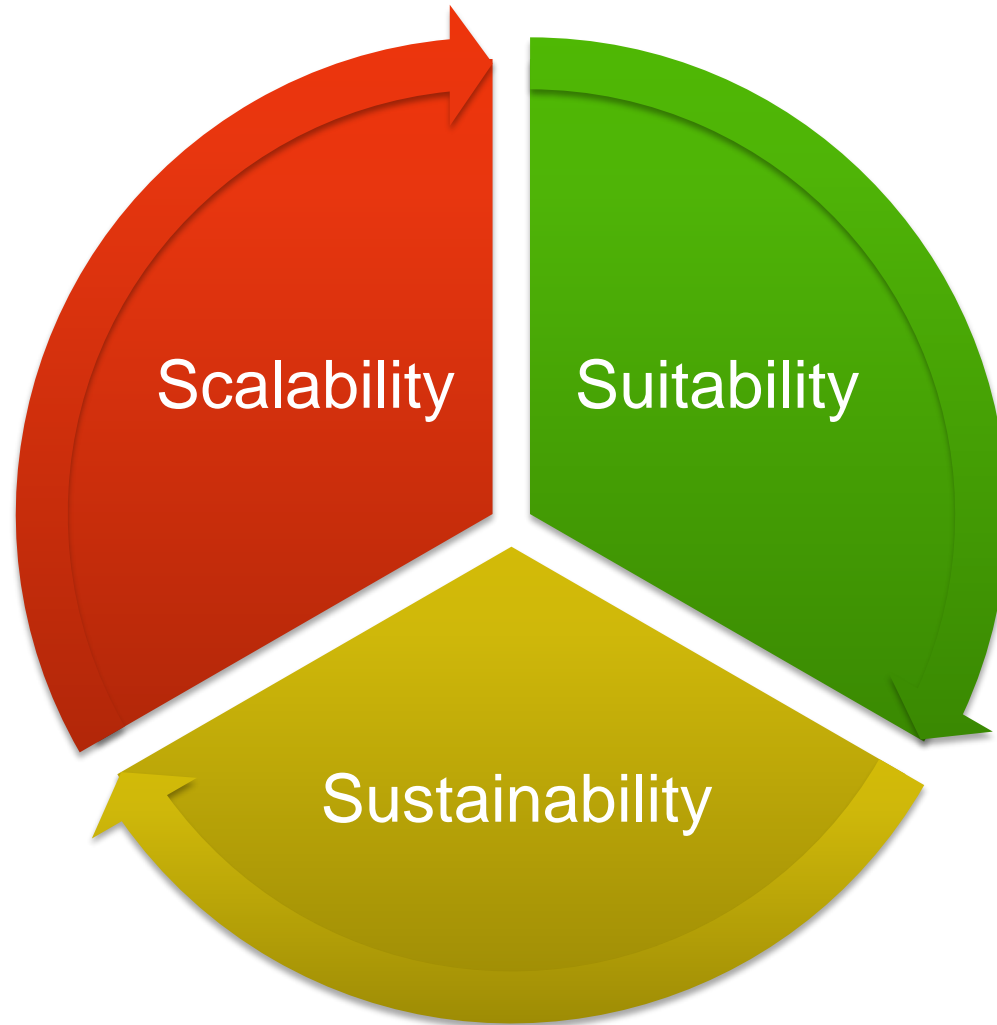


Objective 2: Establishing 'linkages' across partnership ecosystems

Forward & Backward linkages
Access to support groups



The 3Ss



InteGra Precision Agriculture Solutions

CONNECTED EDGE

Devices & equipment capturing sensor data, taking action

Compute Intelligence at the EDGE

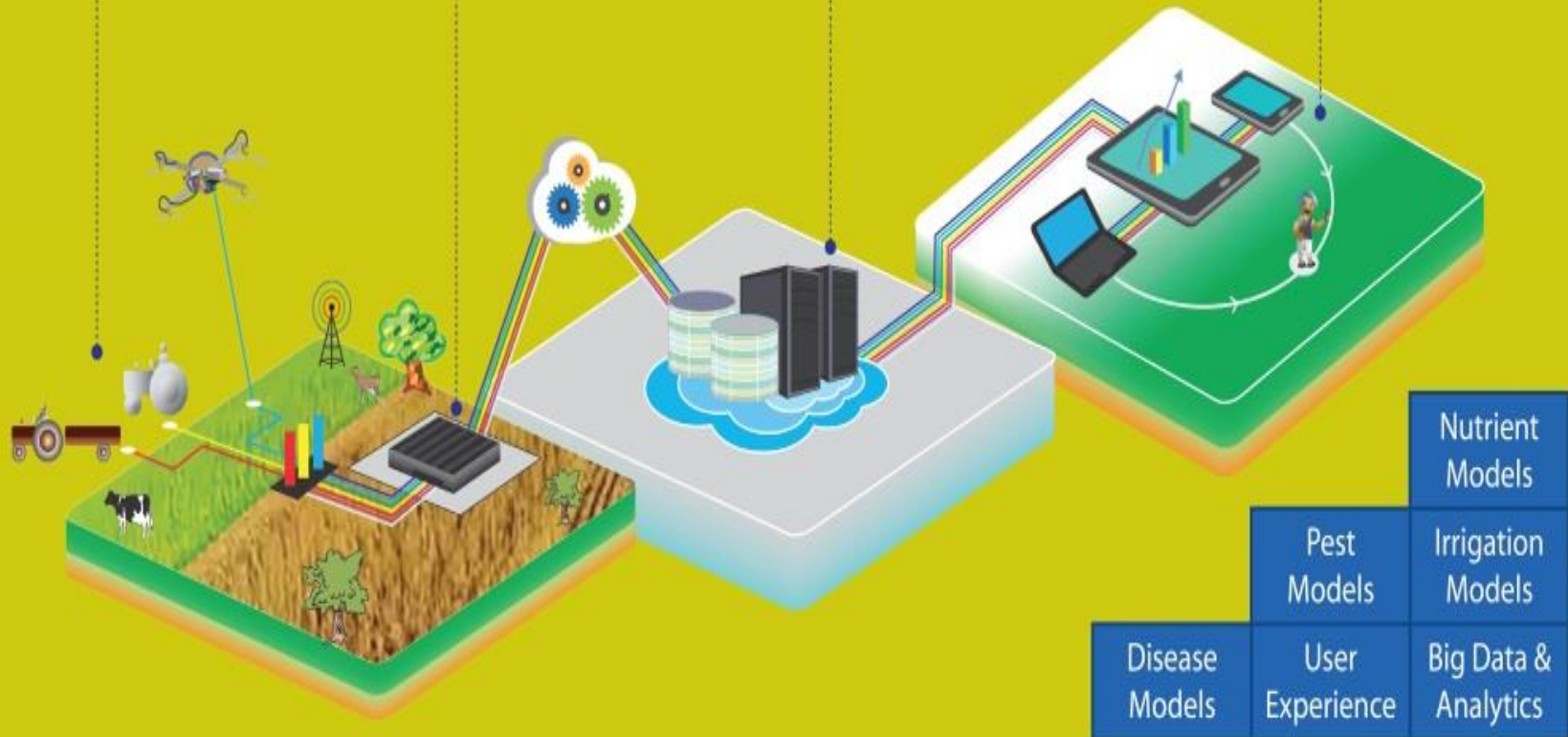
- Download Disease Prediction Models and other Agri related Models from the Cloud
- Enable Real-time Data Processing & Analytics

TURN DATA INTO INSIGHT

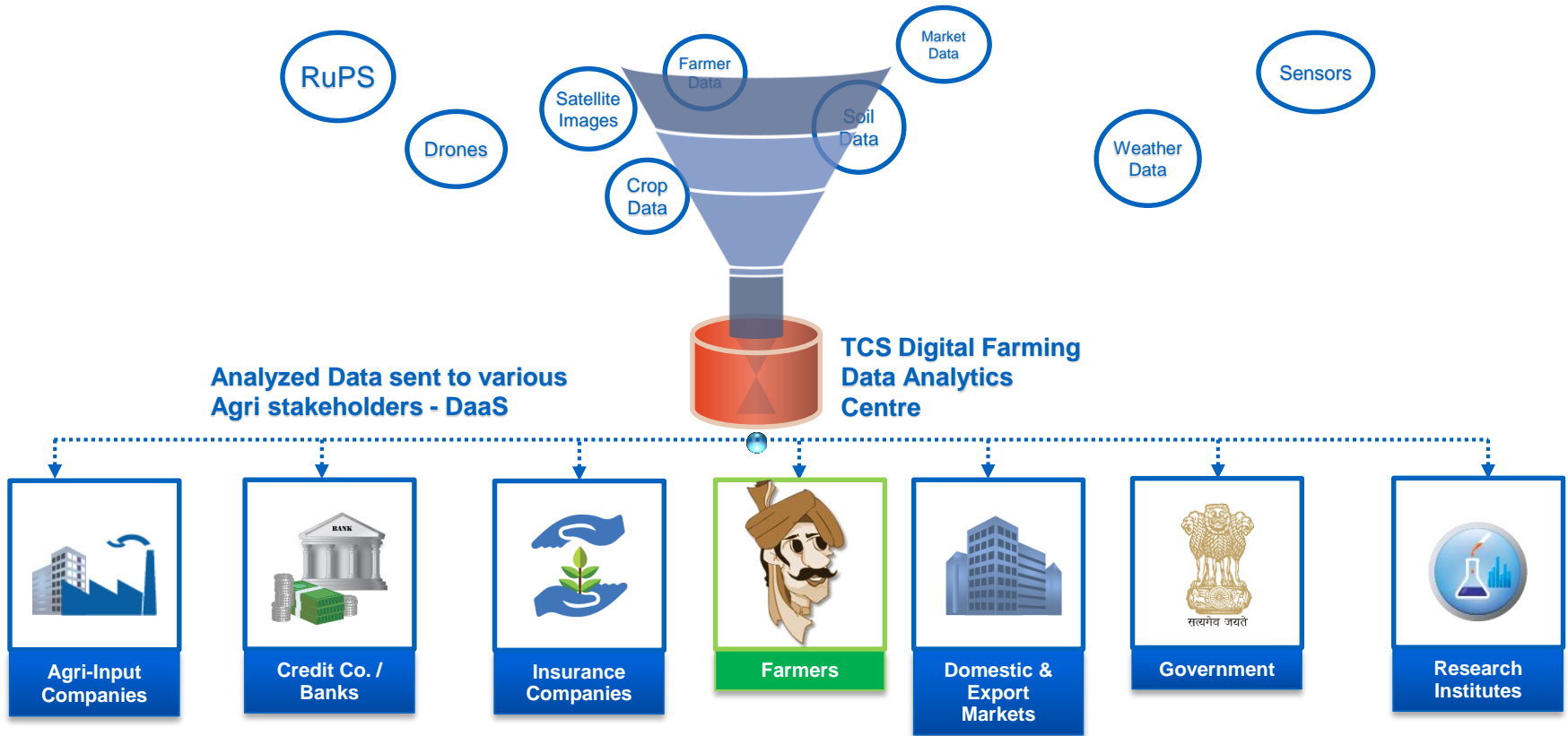
Process, store data, Cloud analytics, Manage devices, Precise networks

PRECISION AGRICULTURE

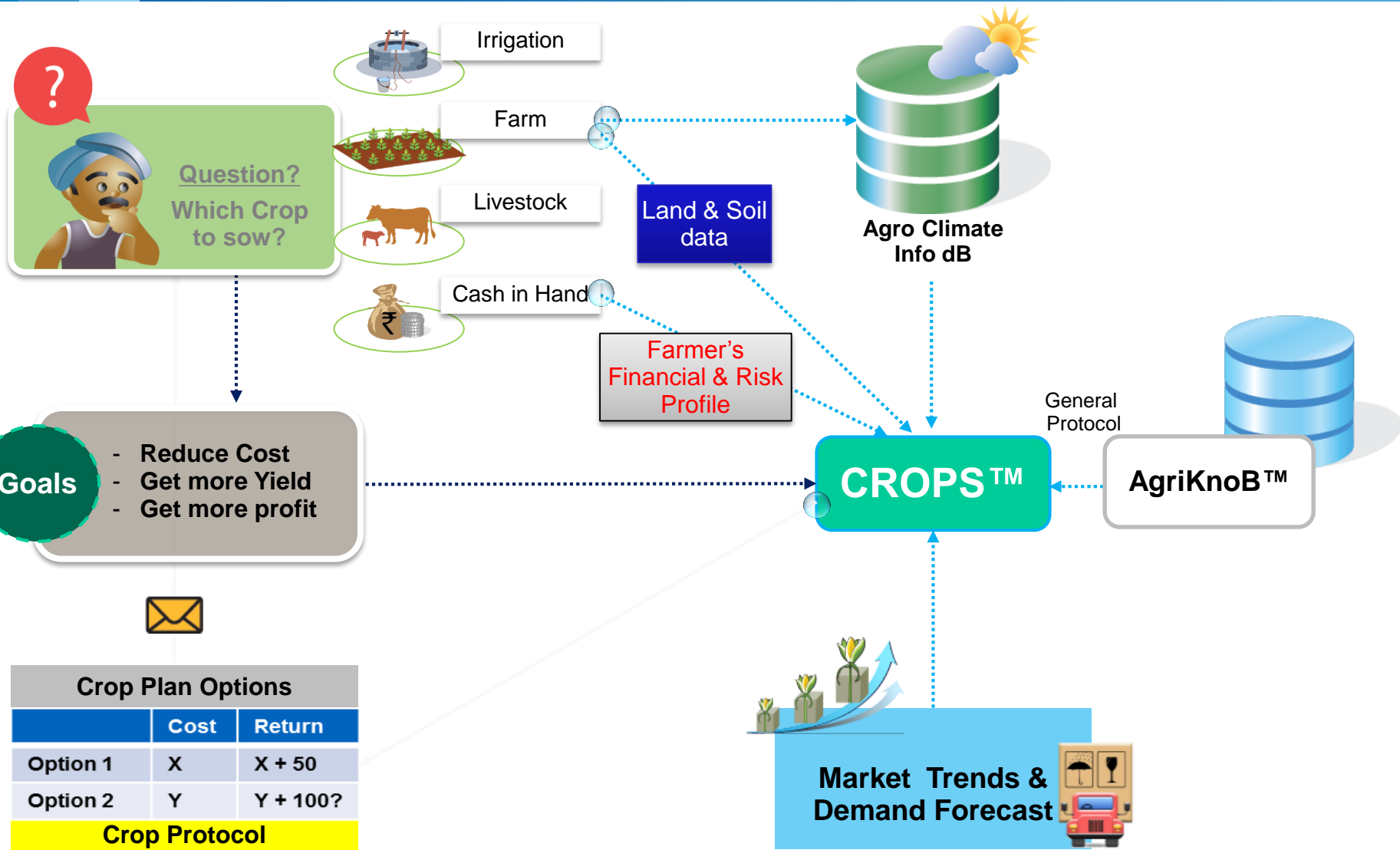
Actionable Information, Automate Operations



Towards Smart Farming

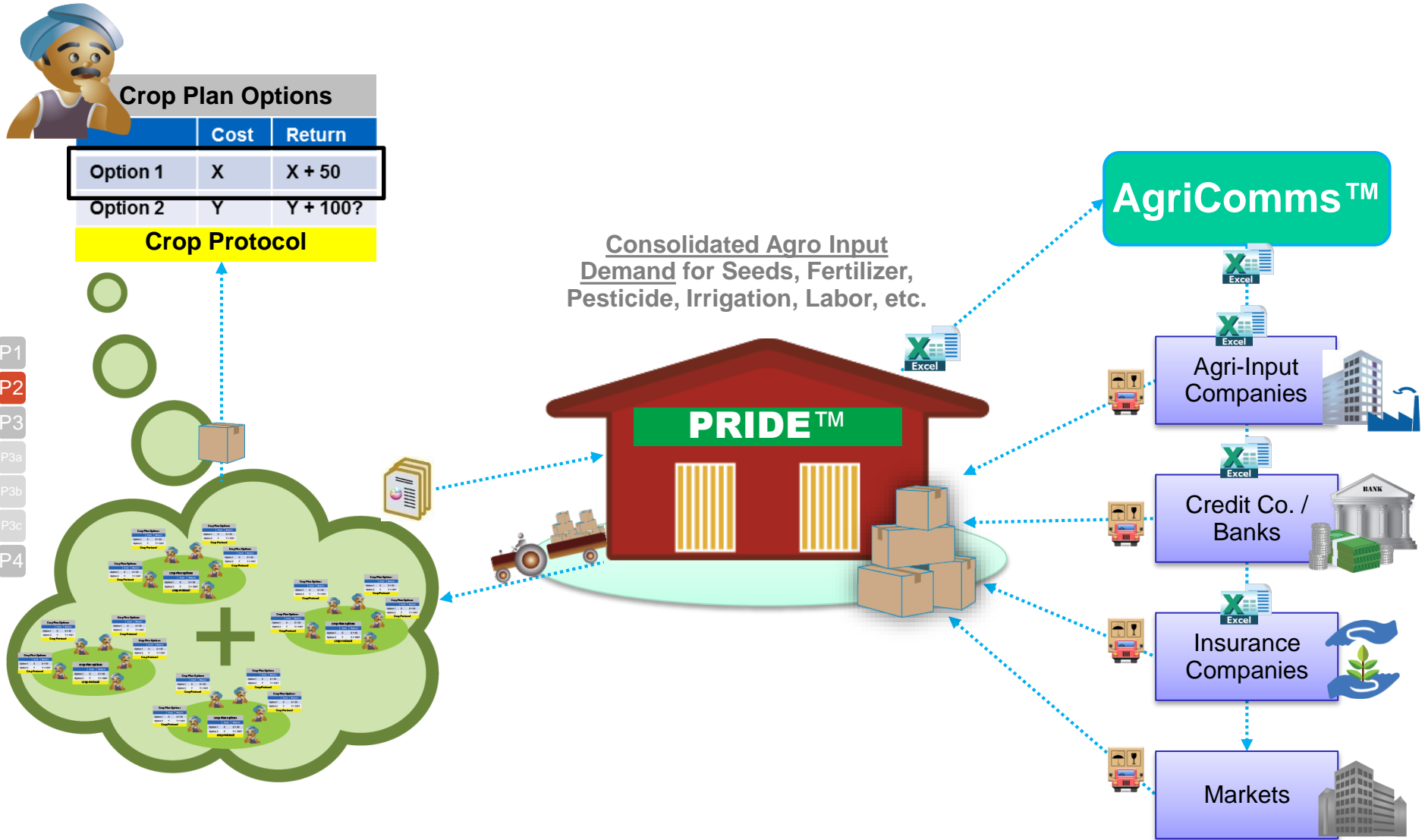


Phase 1: Crop Planning



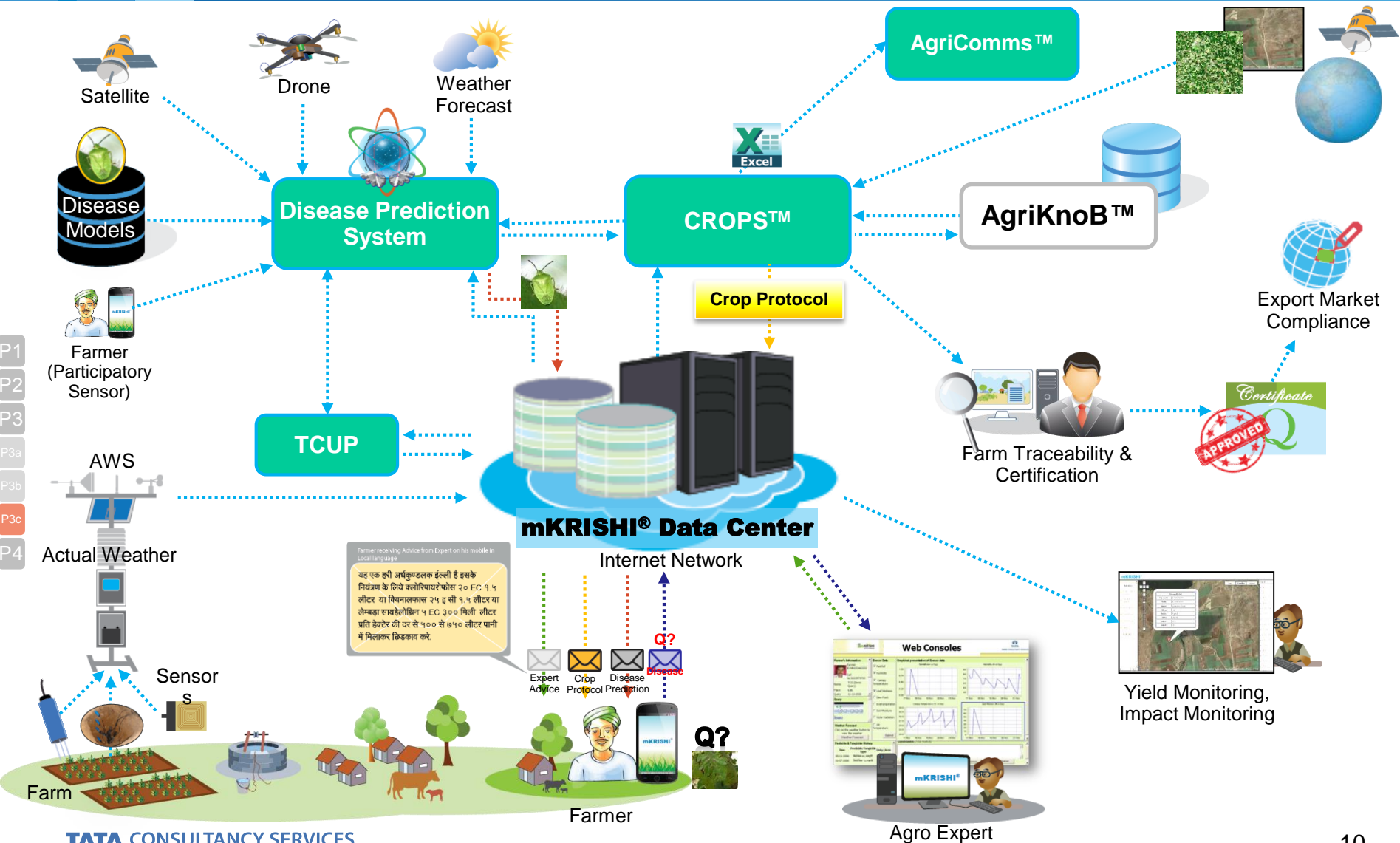
P1
P2
P3
P3a
P3b
P3c
P4

Phase 2: Aggregation & Ordering



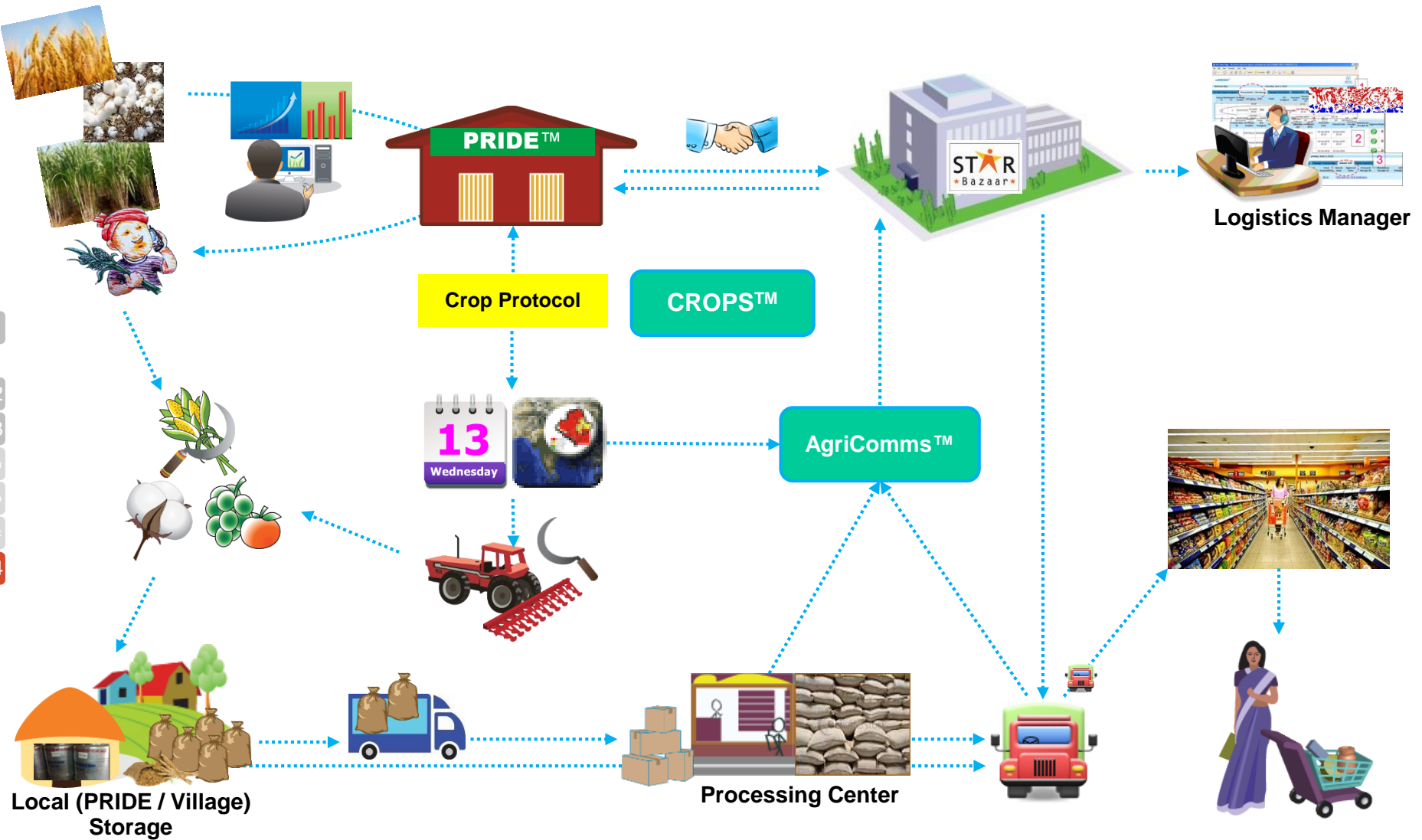
P1
P2
P3
P3a
P3b
P3c
P4

Phase 3: Crop cycle management



P1
P2
P3
P3a
P3b
P3c
P4

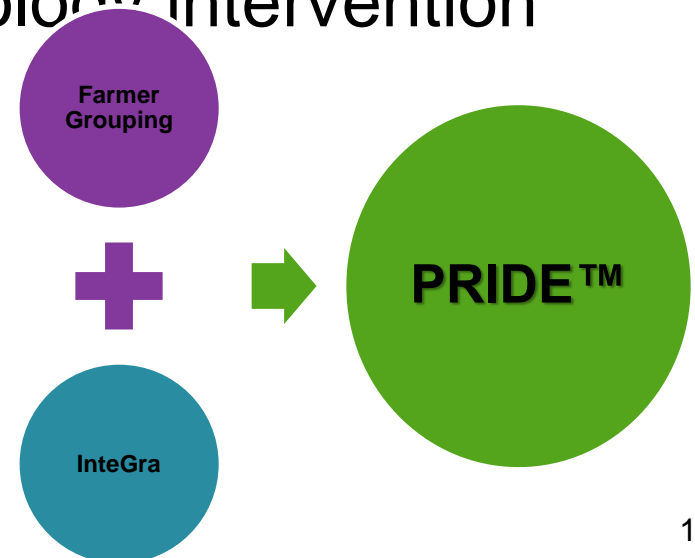
Phase 4: Harvest Planning



What is a PRIDE™?

Progressive Rural Integrated Digital Enterprise

- Intersection of Technology, Agriculture and Business Management
- Self-sustaining, economically viable entity
 - Made possible through technology intervention
 - Standardized processes
 - Improved data visibility
 - Enabling data analytics
 - Demand-driven production



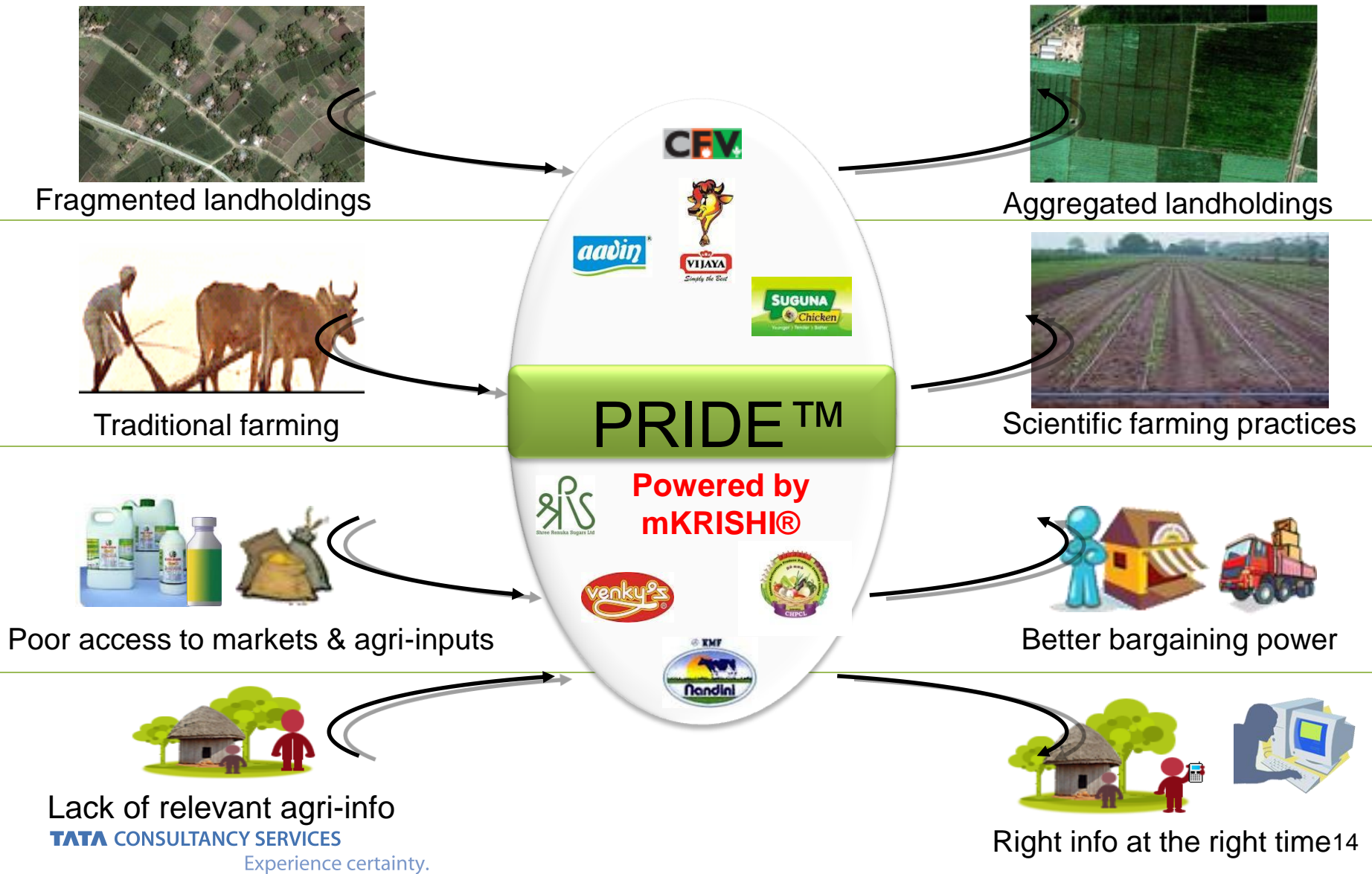
Objectives of PRIDE™s

Leverage ICT to transform the 19th Century Agricultural practices into 21st Century by connecting farmers with partners and experts of agriculture eco system and promoting scientific farming.

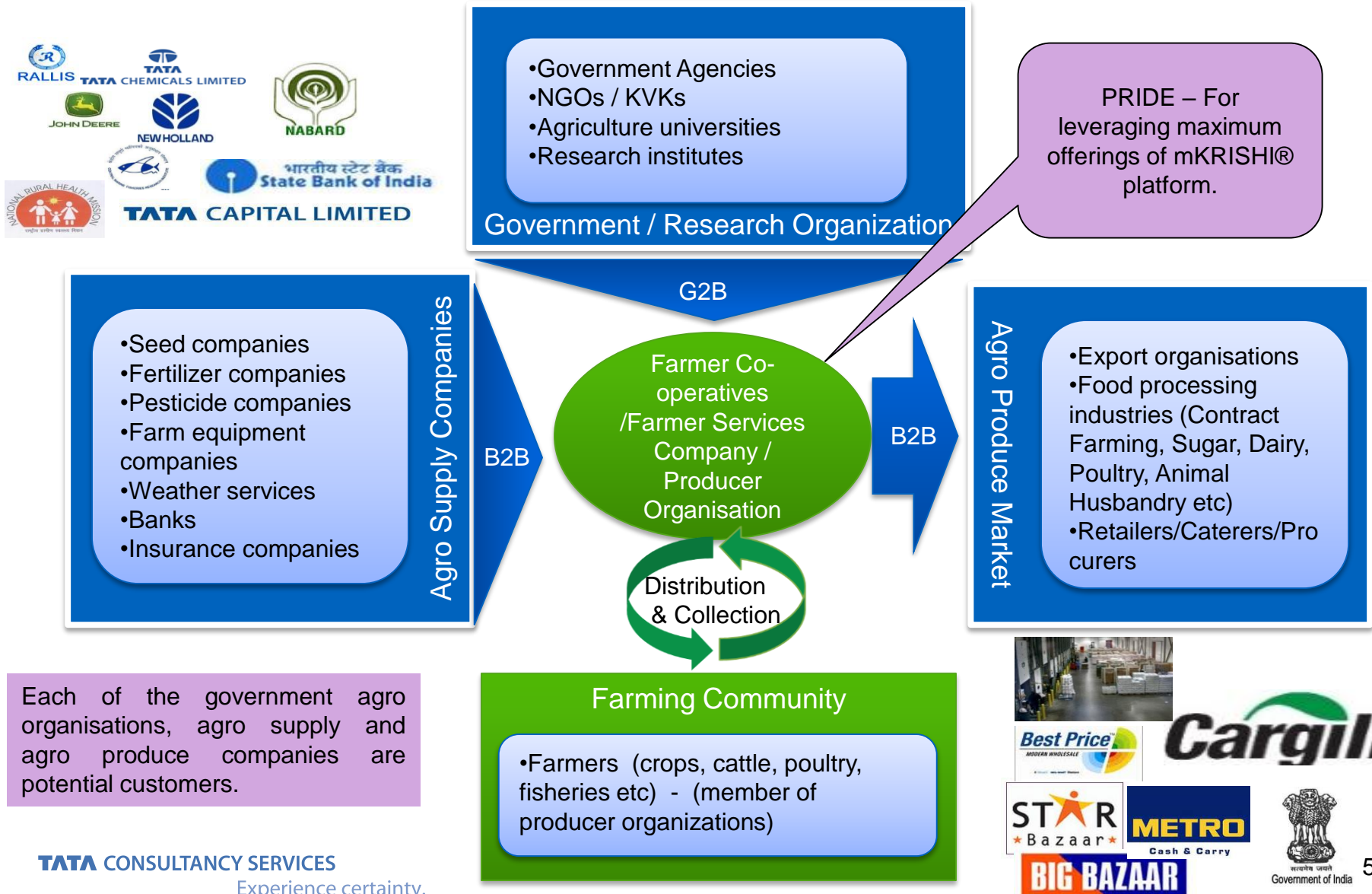
Leverage ICT to achieve economies of scale through aggregation of land-holdings, supply of market produce and demand for agri-inputs.

Provide personalized, farmer specific bouquet of services like Agro Advisory, Best Practices, Crop Rotation and Planning, Alert Services, Procurement etc. on mobile in local language for Value Creation.

PRIDE™ – Bridging the Gap



PRIDE™ – Interacting with stakeholders



Finally...

Which Crop? Variety? suitable to my soil

Will it Rain tomorrow? Will there be high temperature?

Is labor available? Is Tractor, Harvester available?

Where is the seed / pesticide available? Is the price right? Can I get it by tomorrow?

Will I get loan in 10 days?

What is the market price? What different should I do to get more price?

Need



Ecosystem



Platform



mKRISHI® is a Business solution involving

- Numerous Technologies
- Consortium Ecosystem, and
- a sustainable Business Model

Characteristics:

- On Mobile,
- Farmer Specific and
- in Local language.

- *Qualcomm's Wireless Reach Initiative Award (2007)
- *Wall Street Journal Global Innovation Technology Award (2008)
- *Golden Peacock Award for Innovation (2008)
- NASSCOM Top 50 Innovation Recognition (2009)
- India Innovation Initiative (i3) Award (2009)

- NASSCOM Social Innovation Award (2009)
- Aegis Graham Bell Innovation Award (2009)
- eINDIA Awards 2010
- Stockholm Challenge 2010 (Eco-Honorable mentions)
- Business World Infocomm 2012
- Best CIO 2012 IT for Social Cause Award
- Highly Commended Award - Big Tick Business in the Community, Excellence 2013

TCS' award winning Agri-Solution Platform

Experience certainty.





Questions?

Srinivasu.p@tcs.com

Thank You



Promise what we deliver.

Deliver what we promise. That's

certainty

Critical situation. Ruthless competition. Unforgiving customers. Thankfully you can be absolutely sure of your IT solutions with Tata Consultancy Services (TCS). As one of the world's fastest growing technology and business solutions providers, TCS has built a reputation of delivery excellence based on world-class IT solutions that are on time, within budget and consistently deliver superior quality. So, it comes as no surprise that we pioneered the concept of the Global Network Delivery Model, Developed Innovation Labs and Solution Accelerator. Achieving a level of delivery excellence that provides greater value to our customers and is the industry benchmark. Enabling our clients to experience certainty.

TATA CONSULTANCY SERVICES

Experience certainty.

IT Services ■ Business Solutions ■ Outsourcing

Backup

Digital Farming – Case Study

Project Objective

Objective

- Visualize risks associated in Agriculture
- Due to Pest, Disease, other factors
- Based on predefined rules

Actions

- Intimate farmers/producers with appropriate actions
- Trigger sales of required agri inputs based on risk level
- Trigger crop consultancy and auditing services
- Analyze the trend of risks and prediction

Project Description

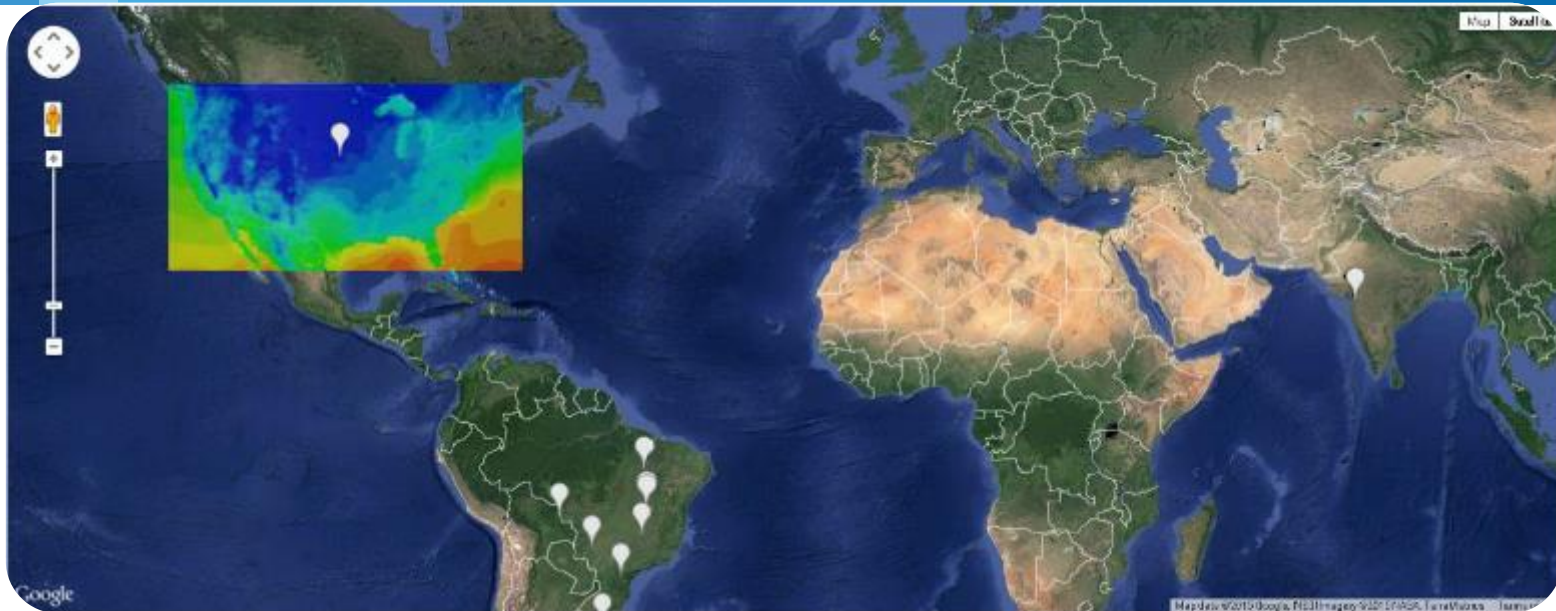
Framework

- Data pull service from file server
- Rule based modelling engine
- Automated Image generation using R
- Automated uploads of images to Google Maps Engine
- Creation of smart UI elements in the front end - pulling appropriate images from Google Maps Engine- Rendering on Google Maps

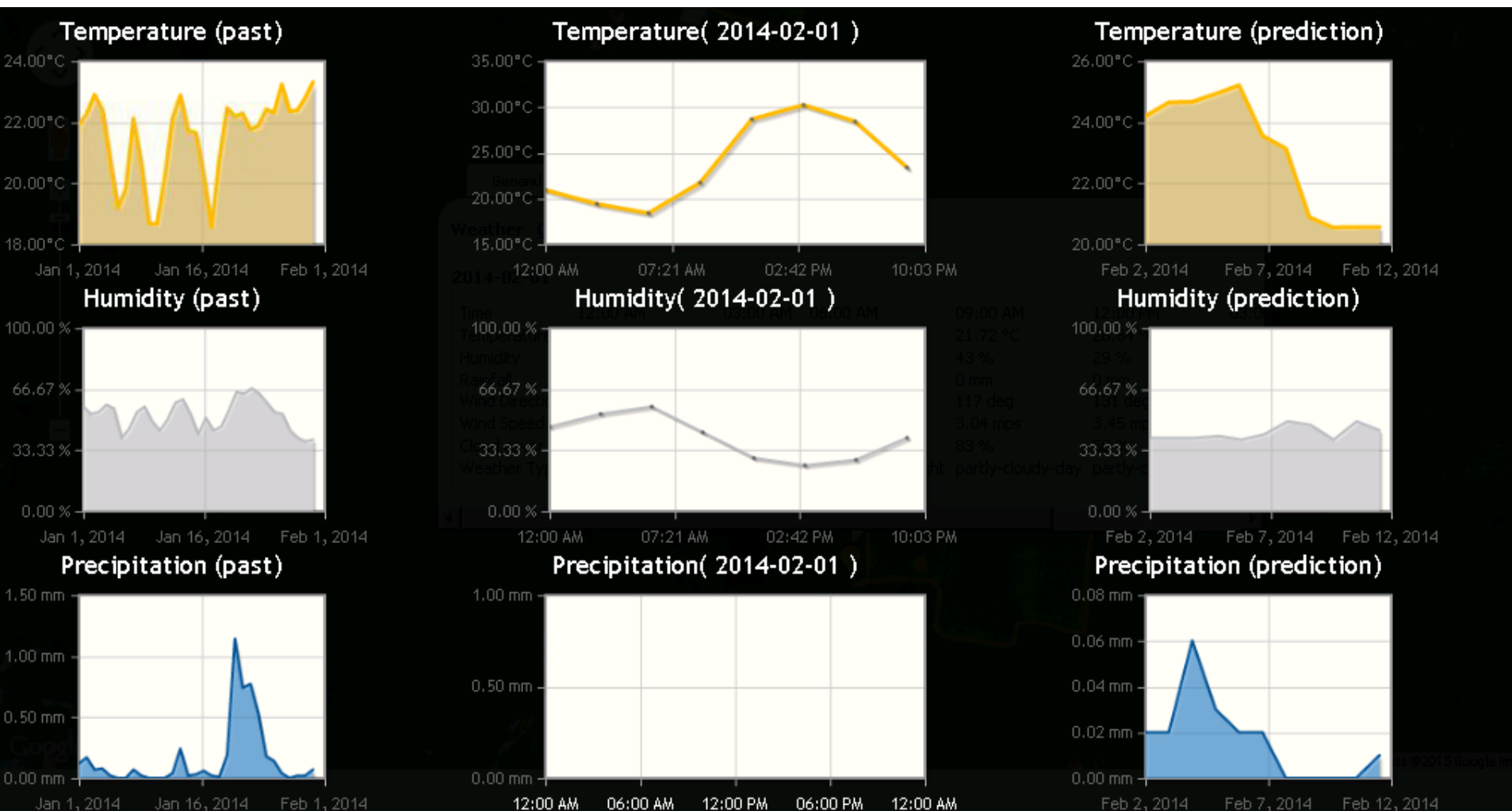
Features Built

- Plot registration and Search
- Plot Visualization
 - Weather Layer with graph
 - Cloud Layer
 - Incident Layer
 - Fusion Layer
 - Risk Layer

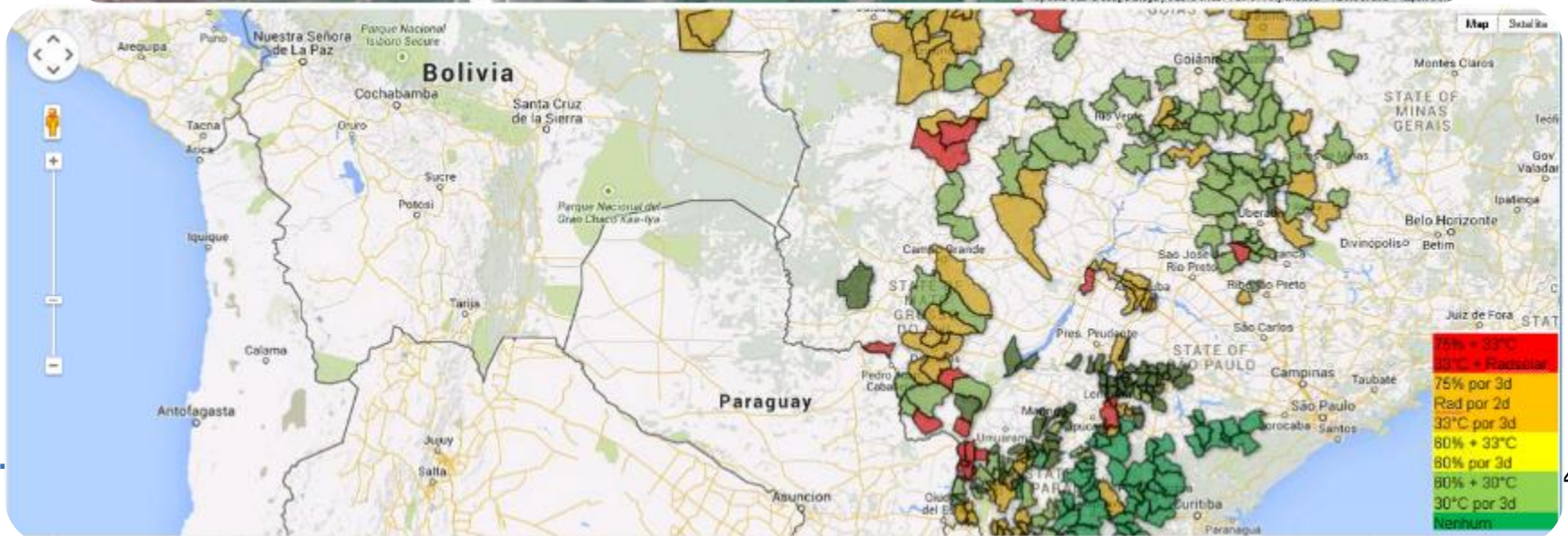
Plot Visualization (Temperature & Weather Layer)



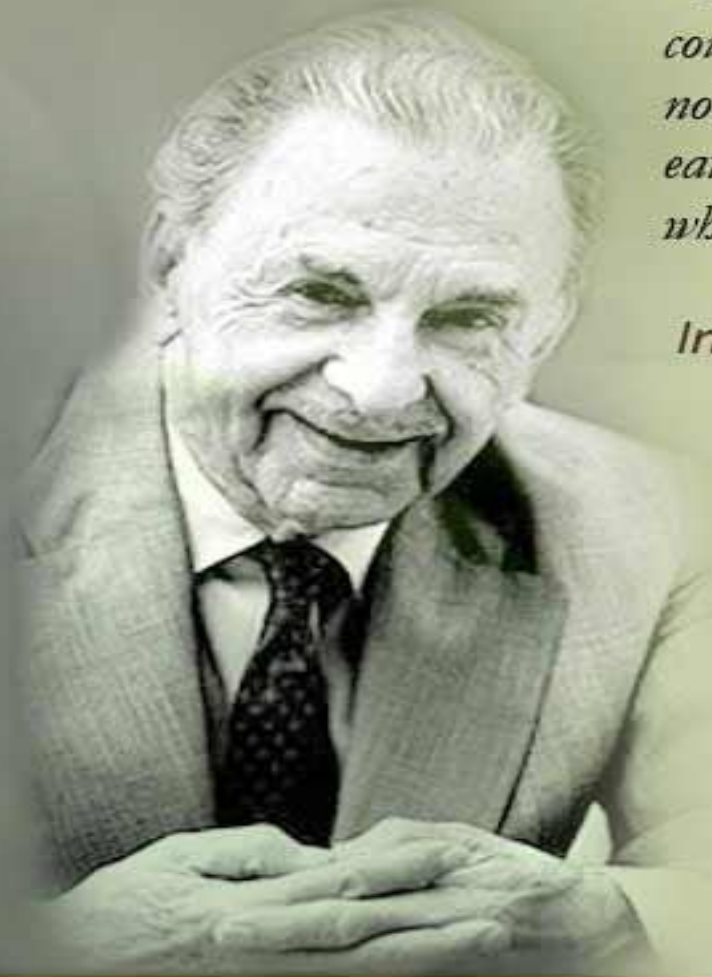
Plot Visualization: Weather Graphs



Plot Visualization: Incident Layer & Risk Layer



Finally...



“The effective execution of a Plan is what counts and not mere planning on paper; it is not what we put on our plate or even what we eat that provides nourishment and growth, but what we digest.”

Industrialist. Pioneer aviator. Visionary.

JRD TATA