

ITU/PITA Workshop on “ Submarine Cable
Access in the Pacific Islands Countries”
Holiday Inn Hotel, Suva, Fiji,
31 July–3 August 2017

AUGUST 2, 2017

ASTCA

Submarine Cable Progress.

- ▶ Hawaiki Branch American Samoa
- ▶ Cable Land route
- ▶ BMH – Tutuila
- ▶ Census map of Tutuila...
- ▶ Pictures of cable route from BMH to CLS
- ▶ Pictures of cable & conduits infrastructure

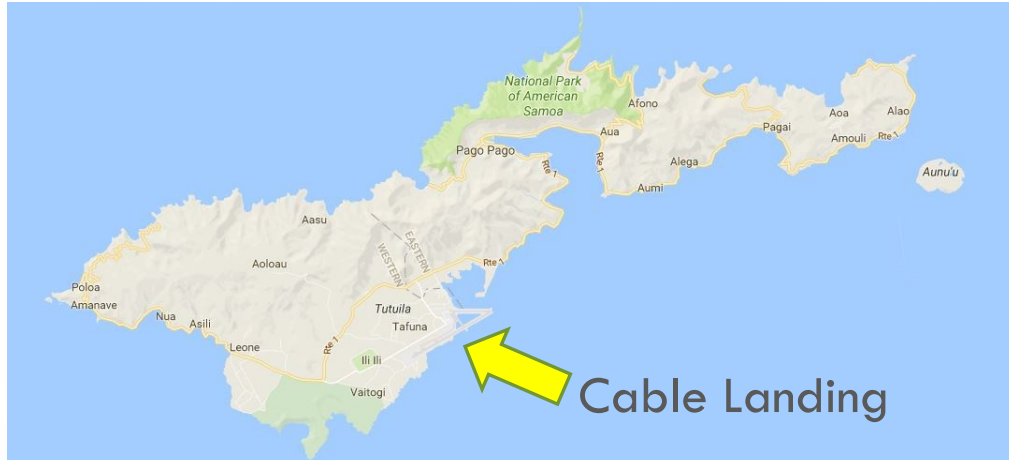
HAWAIKI CABLE SYSTEM

© 2016 TE CONNECTIVITY / TE SUBCOM. ALL RIGHTS RESERVED



Submarine Cable Options





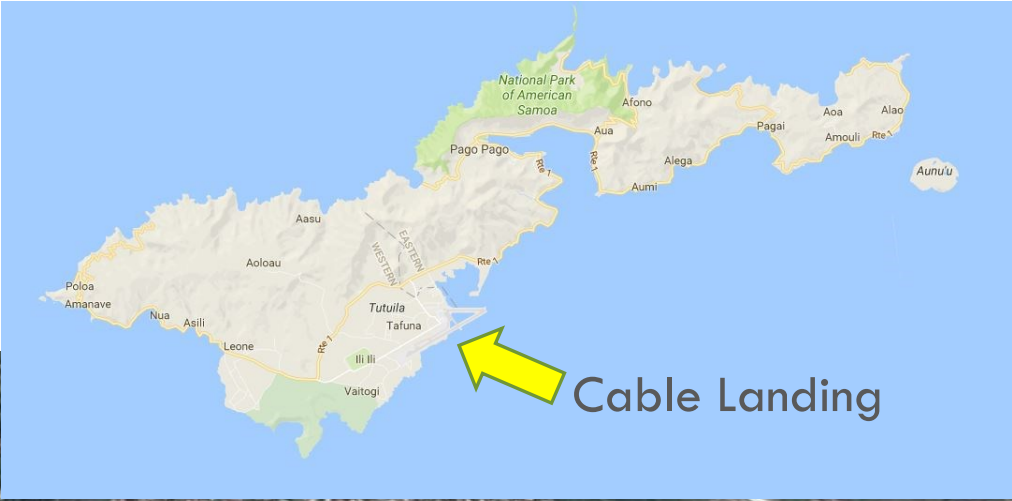
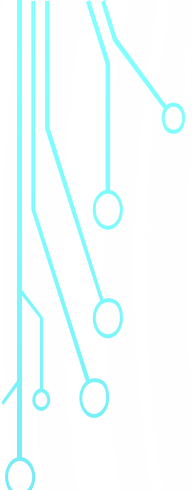
Cable Landing



CLS

BMH

Google



STAGING AREA: ASTCA Storage Yard/Depot located at the Tafuna Airport will be used as a staging area to temporarily store materials and equipment for the Hawaiki Cable Project.



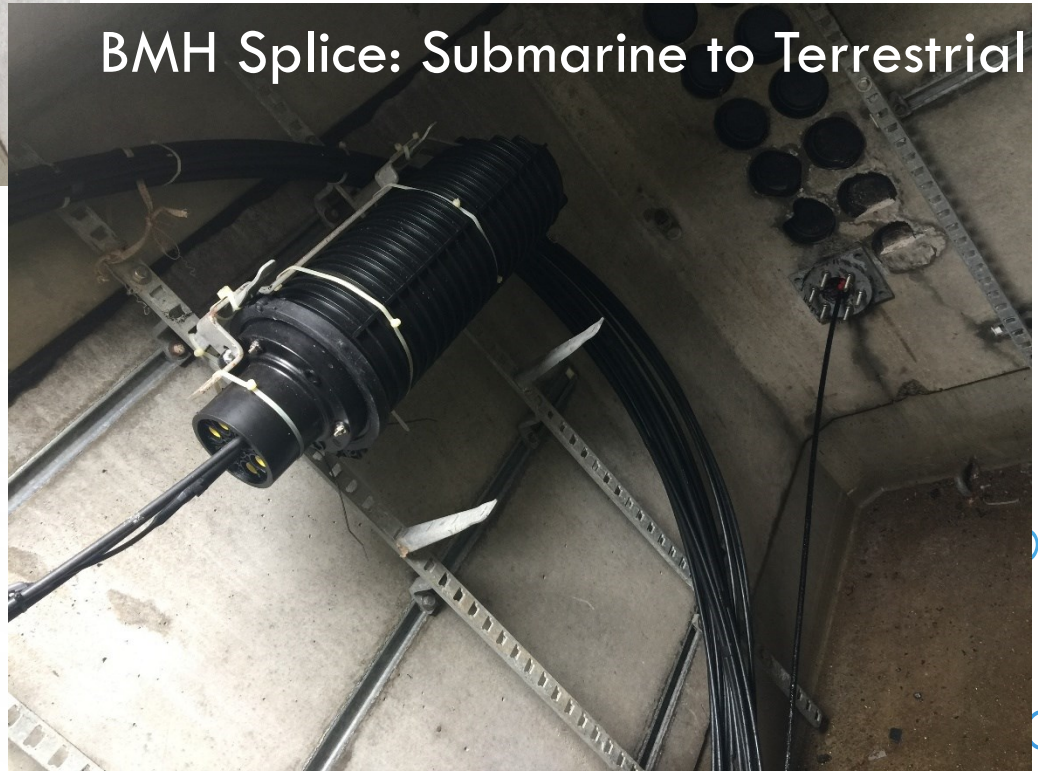
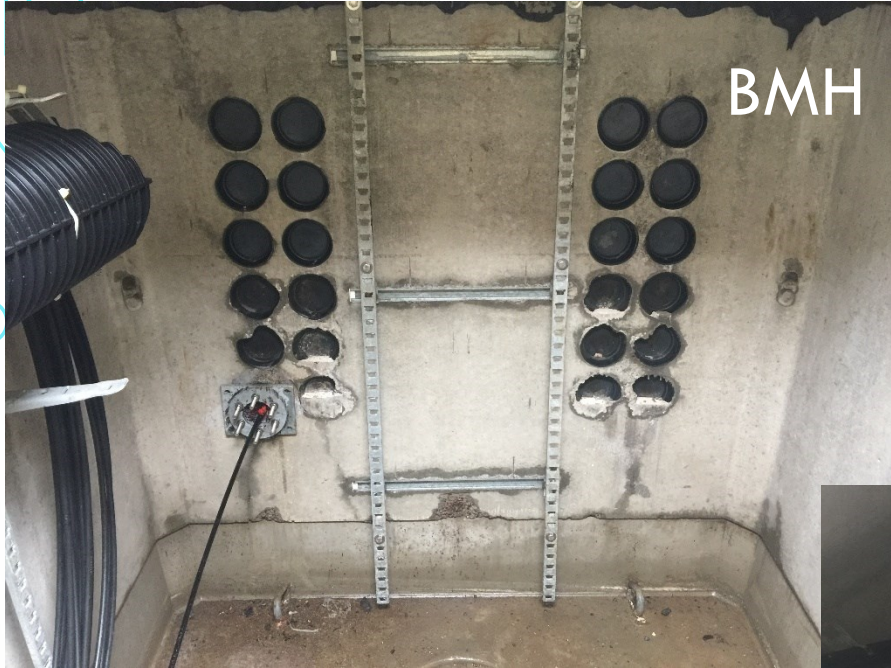


BMH LOCATION

ASTCA STORAGE YARD

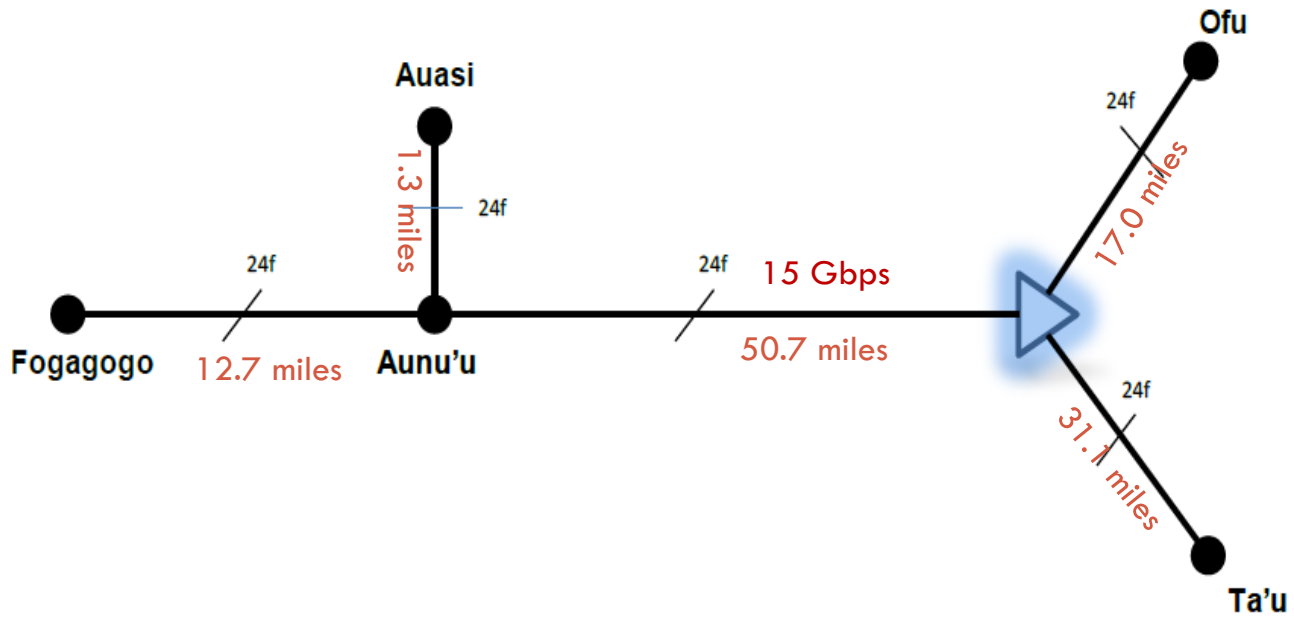
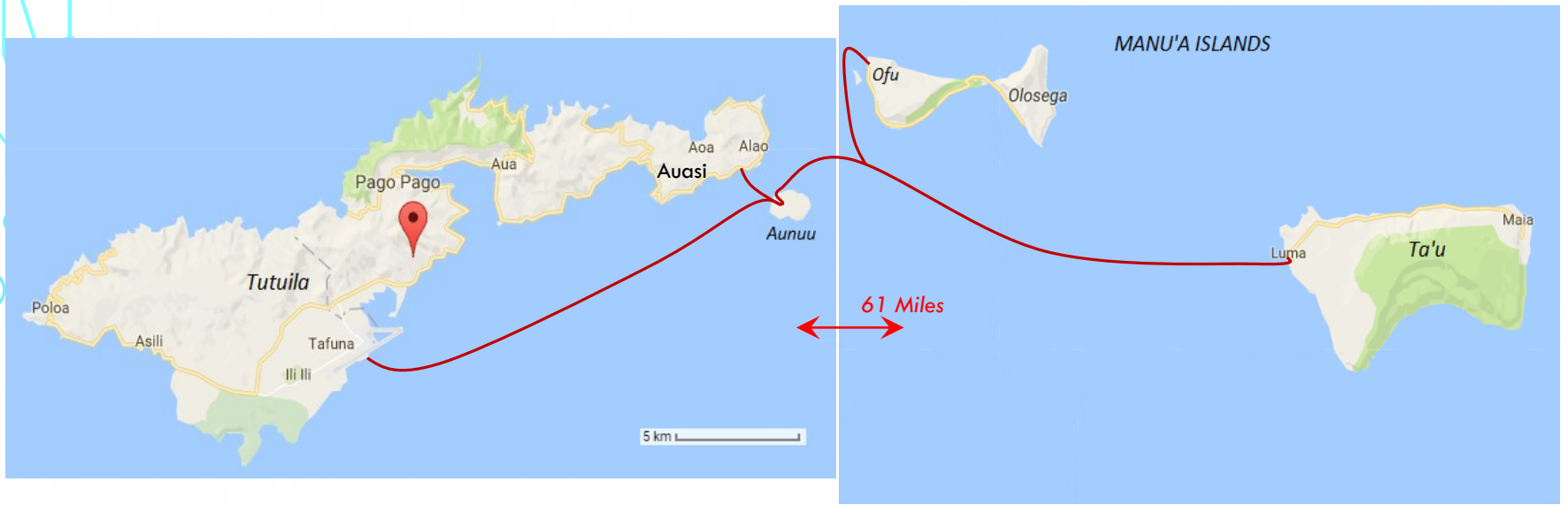
Staging Area

EXISTING CONDUIT ROUTE

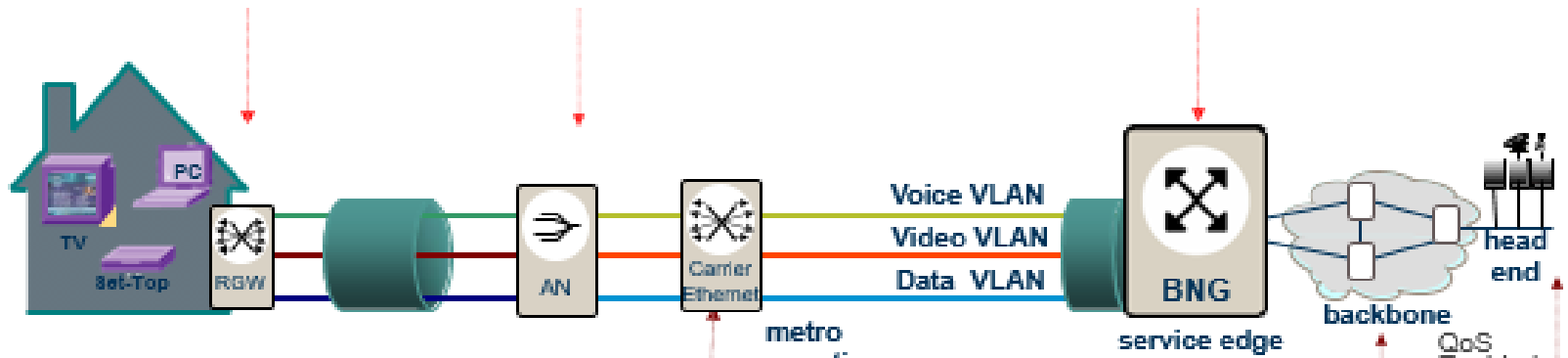


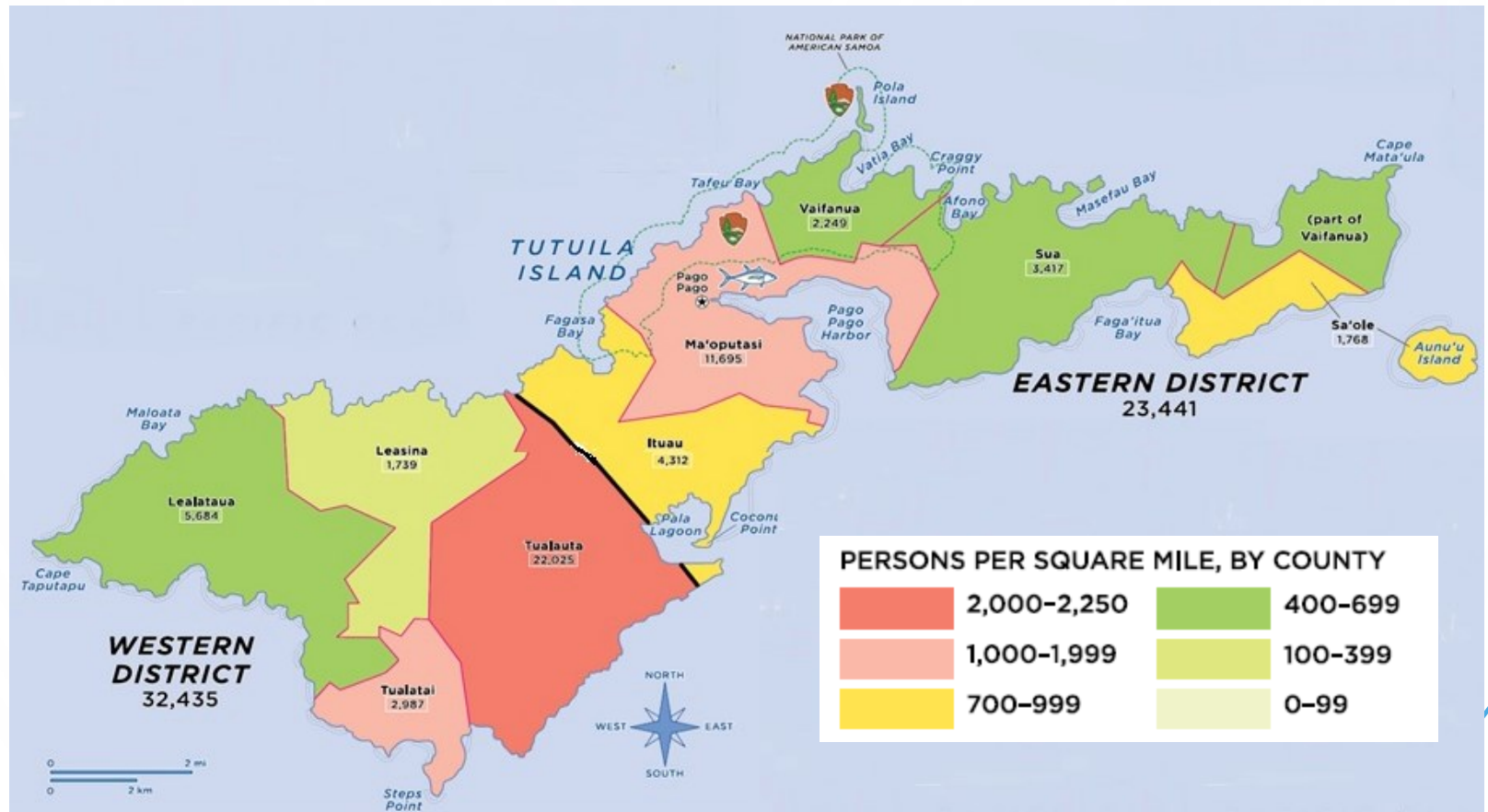


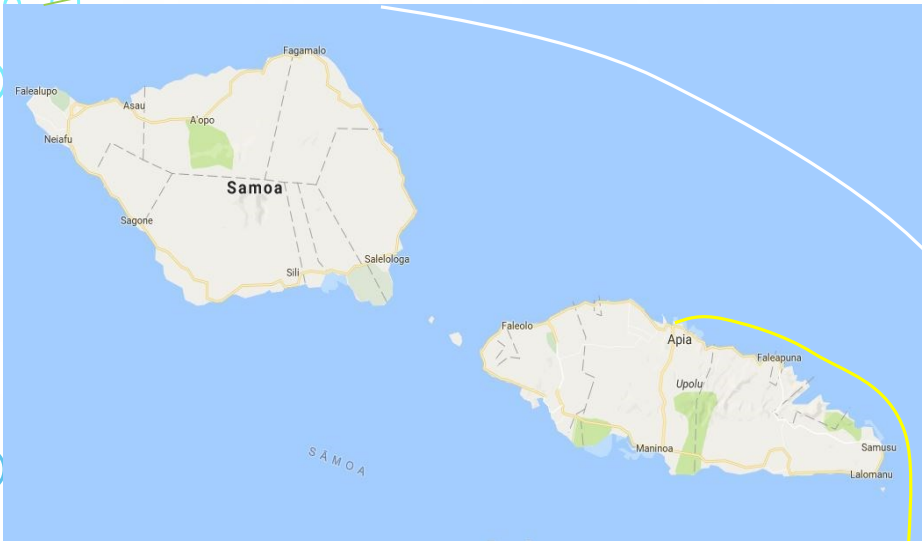




Broadband Fiber To The Home (FTTH) Typical Layout







TUI

GENERALIZATION









Fa'afetai



Questions?