



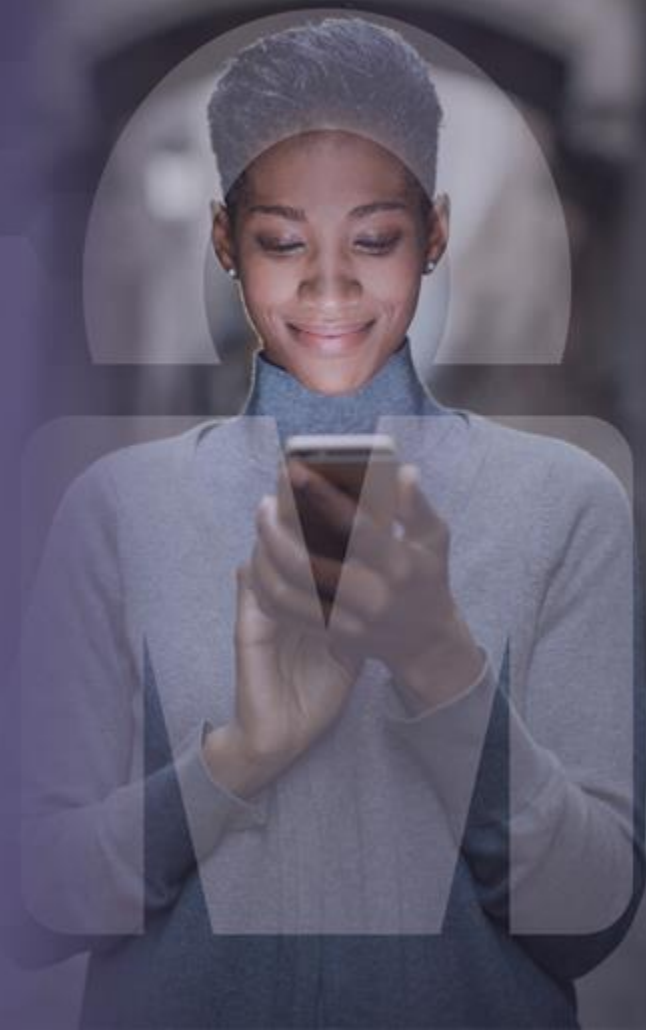
Secure digital identity is now in our hands

Session 1: Introduction on mID: Trends, Challenges and Opportunities

Jose Antonio Aranda, Technology Director, Europe / Latam, GSMA
Expert Group Meeting on Mobile ID
Warsaw - Poland 18th October 2016



Personal
Data



THE FUTURE OF DIGITAL IDENTITY

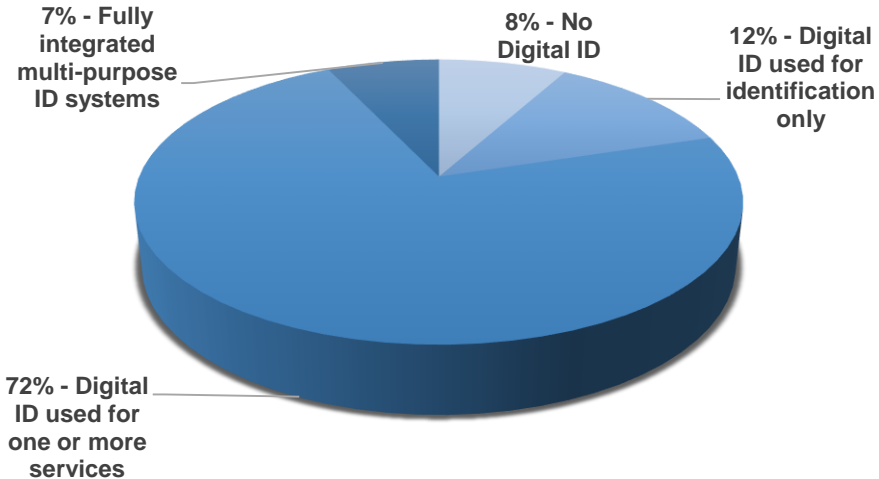
A global opportunity for governments, inter-governmental forums and other stakeholders



Barriers to national digital identity systems raise the need for public and private sector cooperation



NATIONAL DIGITAL ID*, COVERAGE POLULATION



**198 countries included in the assessment*

Source: Accenture ID4D Integration approach report 2015

GSMA's government survey¹ has identified a short list of authentication and attribute needs in the government sector:

- 1. Enhanced security for the protection of citizens**
- 2. Standards and compliance-driven need to meet data protection regulations**
- 3. Reduce high levels of user friction to drive registrations**
- 4. Improve User Experience and enable complex form-filling on small screen**
- 5. Reduce demand on, and improve efficiency of call centers use cases**

[1] GSMA Service Provider survey, April 2015

Convenient alternative to passwords and protects consumers privacy



Mobile Connect is the mobile operator facilitated authentication and identity service that provides convenient access to online services from any device.

It combines the user's unique mobile number and an optional PIN for added security, to use it everywhere they see Mobile Connect.



Mobile Connect Log-in

Convenient

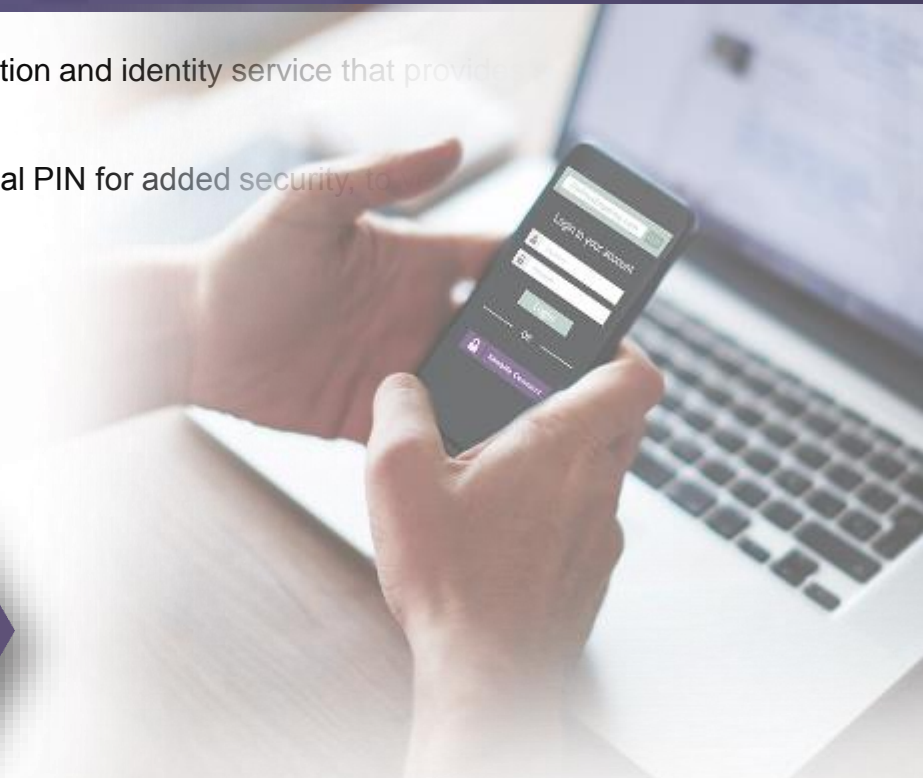
Seamless consistent and simple log-in experiences across all providers across any device

Secure

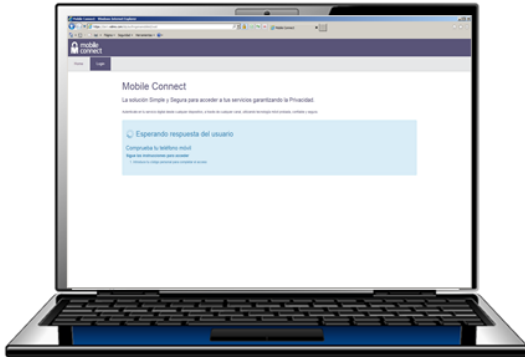
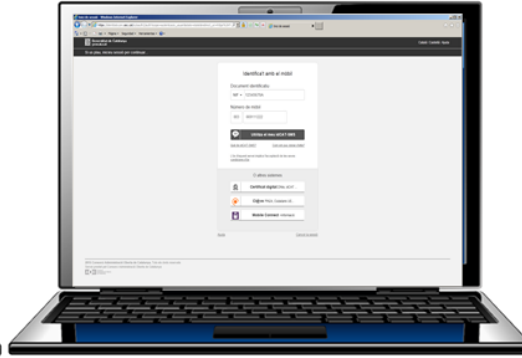
Authentication via trusted operators over secure regulated networks

Private

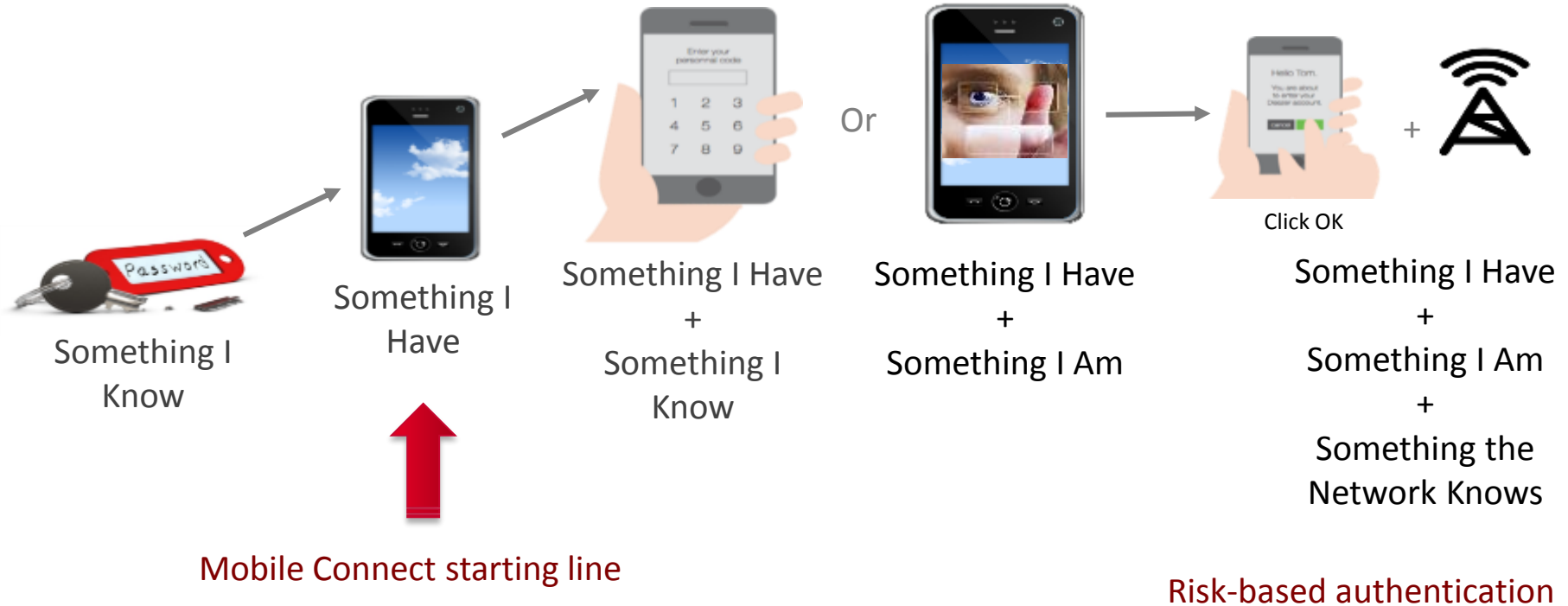
No data shared without explicit consent

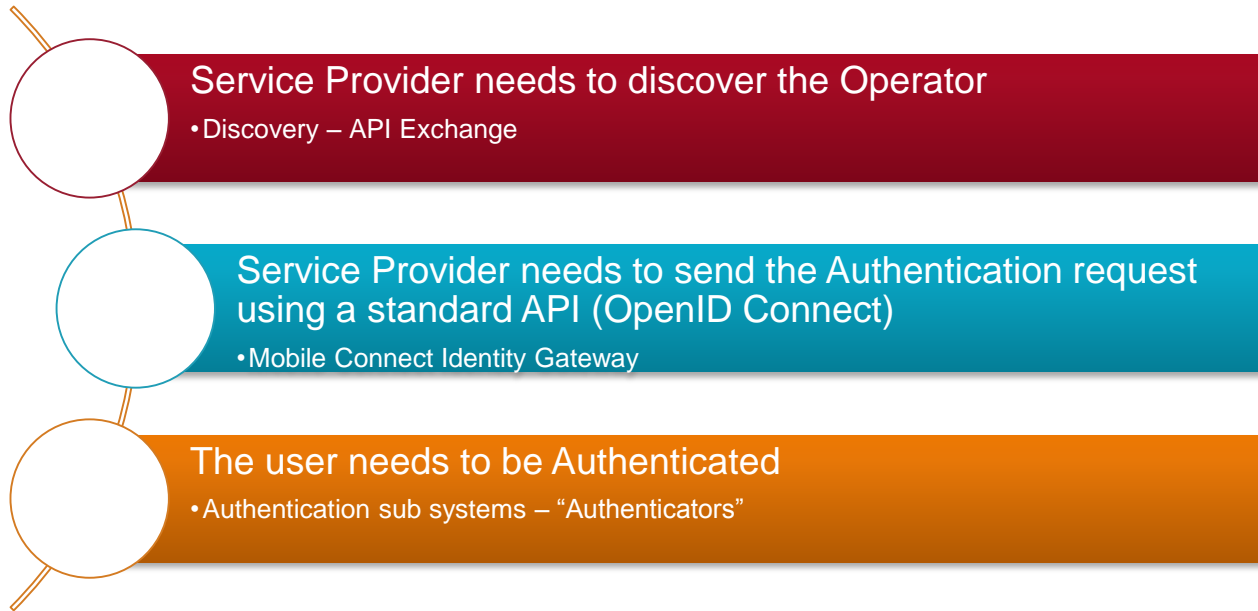


Test Results: SPAIN – FINLAND SCENARIO 1: AUTHENTICATION – Access to Generalitat portal

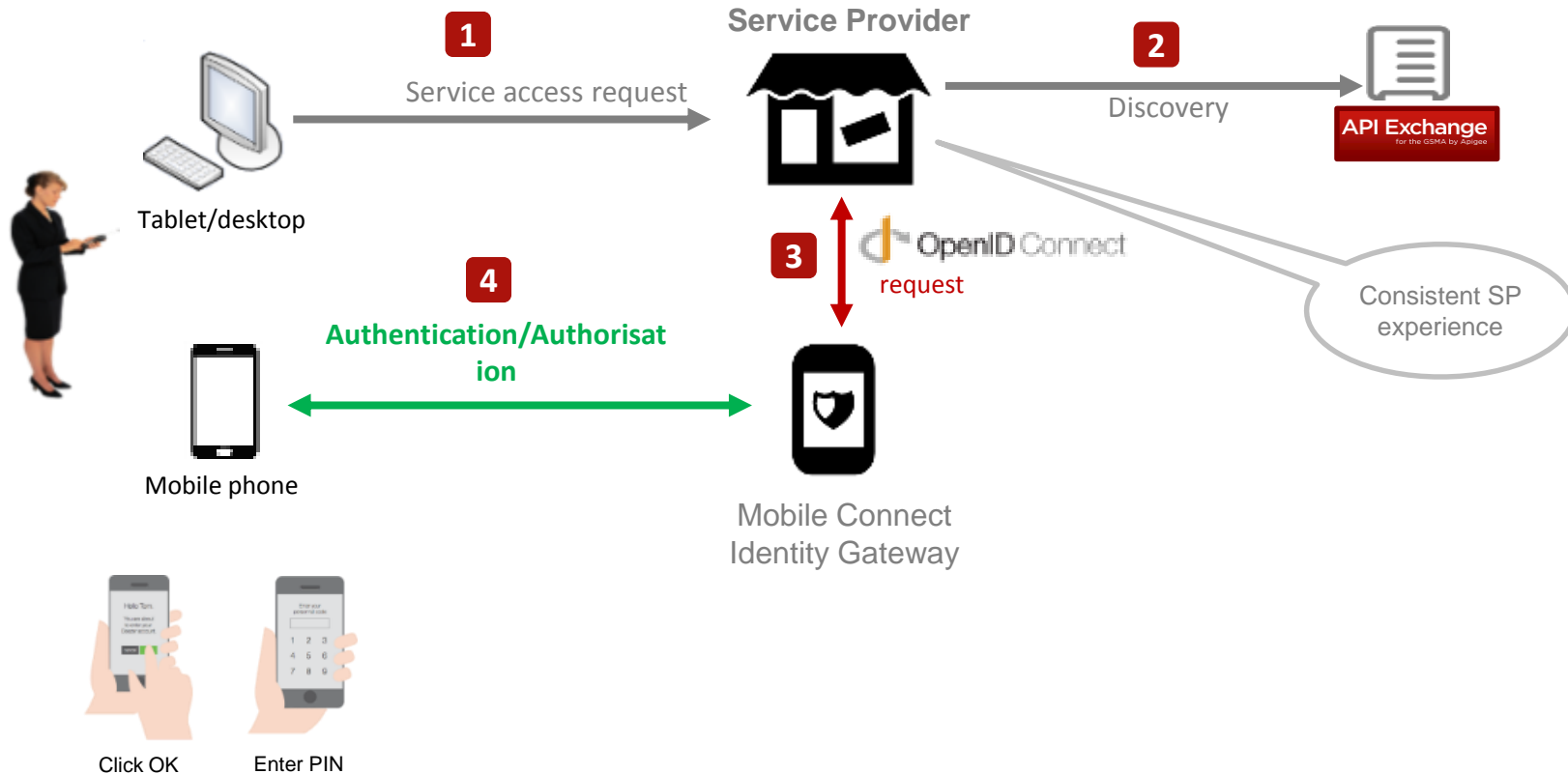


The transformation ... towards Multifactor Authentication





Mobile Connect Architecture



High Level View: MC4EU cross-border authentication



**Citizens
connect to national
Public Service,
cross borders**



Public Service Provider

Authentication
through MNO using
GSMA discovery

Authentication
service on both
ends



MNO's Market State A

Cross border
european
identity
verification

GSMA
discovery



MNO's Market State B



Mobile ID
service



Public Service Provider

MARKET STATE A



Leverage existing
strong authentication
mechanisms with
Mobile ID SIM

Unique user
experience
through Mobile
Connect discovery

MARKET STATE B

Overall, Mobile Connect brings strong benefits for the Public Sector



- **Simple user experience**, on a device that citizens already carry with them
- Frictionless login encourages citizens to **access government services more often**.



- **Flexible security** helps protect citizens' accounts and personal details.
- Compliant with **regulatory requirements** on authentication, aligned with international security standards.
- Outspoken **privacy** focus, preserves citizens' trust and aligned with government priorities



- **Cost effective**, no need for additional devices or readers
- **Efficient and ubiquitous solution**, working across public and private sector



- Enables **new digital public and private services** improving citizens' daily life
- Easy-to-use digital identity is a key enabler to build a **more connected society** and **enhance digital inclusion**



- **Mobile operators** are already working with digital service providers, hence are the **ideal partners** to create a trustworthy ecosystem
- Drives scale and ensures national and international **inter-operability**