

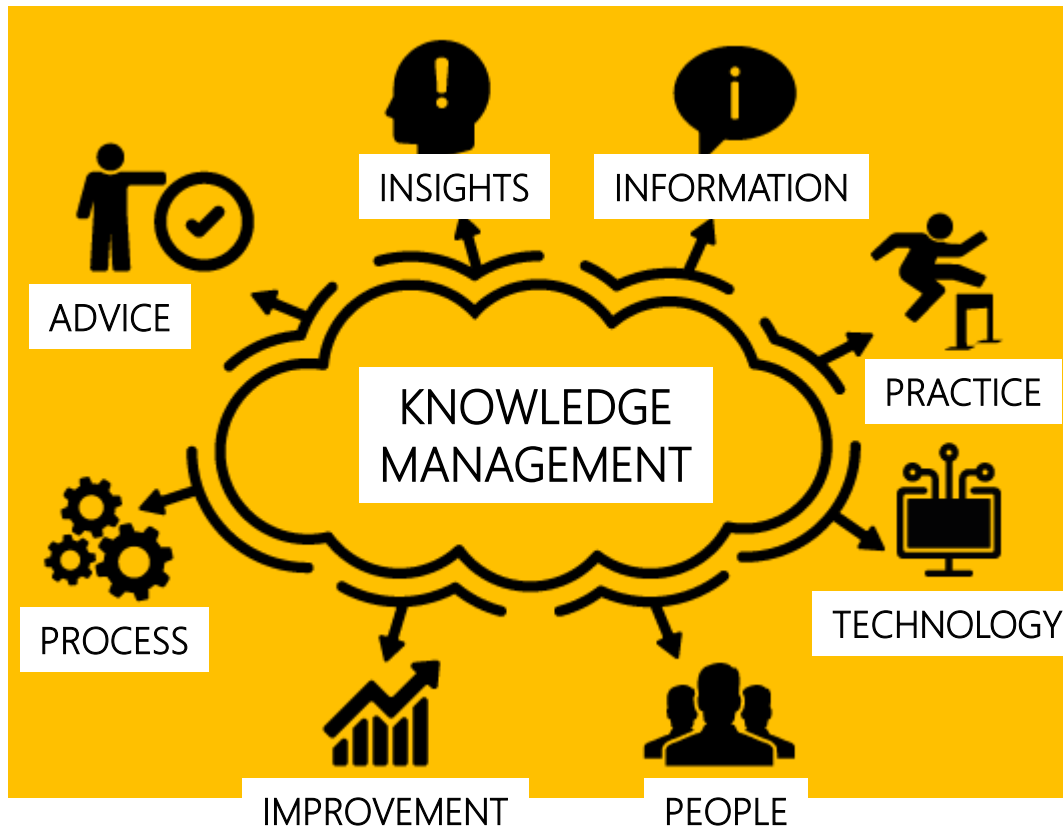
SIIA

Suitable Infrastructures Information System

Broadband Mapping Systems in EU countries

ITU Regional Regulatory Forum for Europe

Regulation supporting the Digital Transformation



Knowledge as a shared resource

The availability of better and more economical communication solutions implies:

- coordination and effective participation of different actors.
- creating conditions to promote information sharing initiatives.

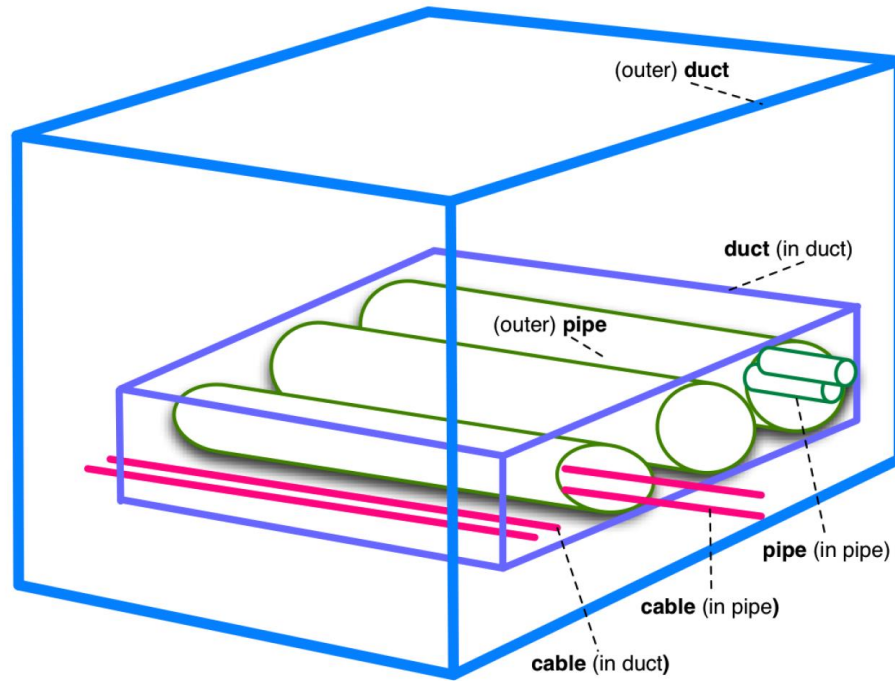
SIIA – Knowledge integration about the existing infrastructure

SIIA –is an important contribution to the development of an innovative and competitive communication services ecosystem

The information made available at SIIA allows to optimize and profit from their use in the construction of communication networks, through:

- sharing and reducing the investments necessary for its construction;
- shorter service availability times (reduced time-to-market), costs and impacts on the public space resulting from its coordinated construction..

Infrastructure Sharing Benefits

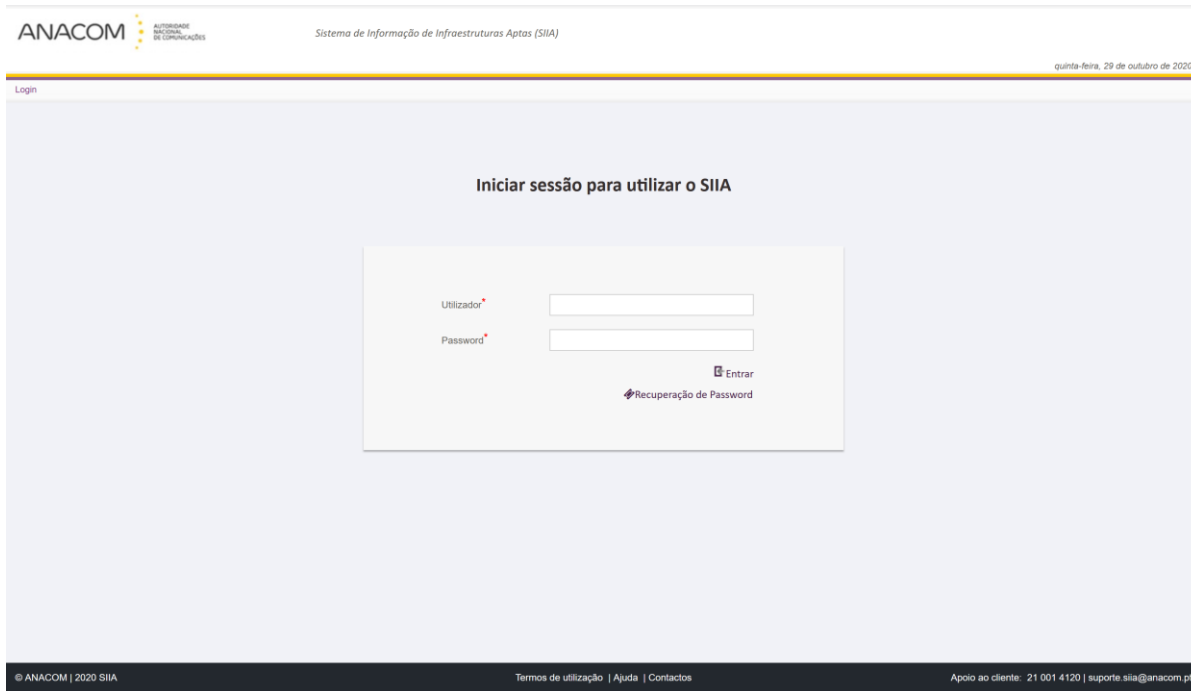


Multiuser infrastructure, duct with different cable types and operators, resources optimization, etc.

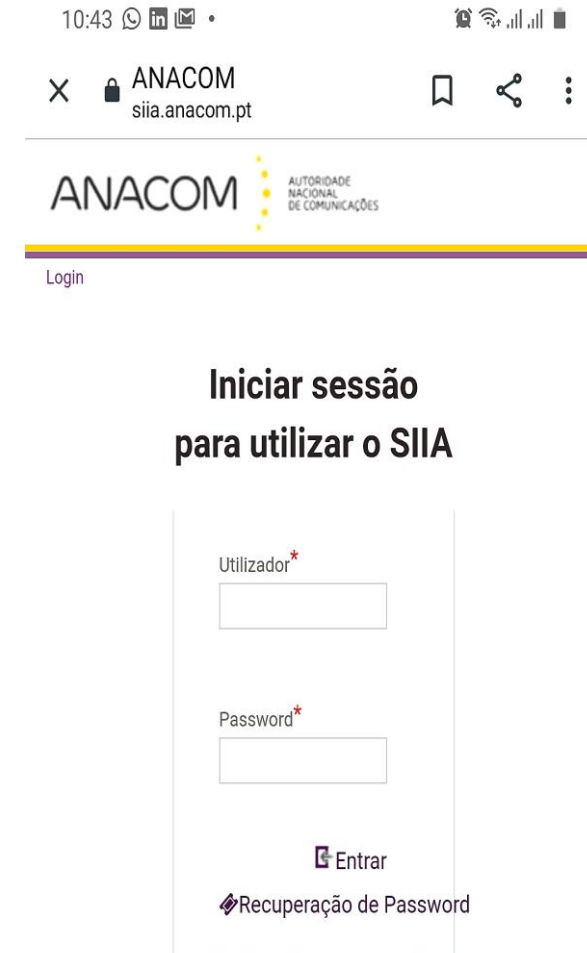
SIIA – Suitable Infrastructures Information System

- SIIA is the solution that allows those who need to install communications networks to meet those with infrastructure with the capacity to host them.
- This sharing allows lower costs and speeds up the deployment of communications networks, contributing to the development of the country, with benefit for all.
- To access SIIA, Entities must submit an application for accreditation, using an electronic form, and receive access credentials.
- In a few seconds, they can consult all the information available, register their georeferenced infrastructures, publish announcements of extensions and/or new constructions.

SIIA – Suitable Infrastructures Information System

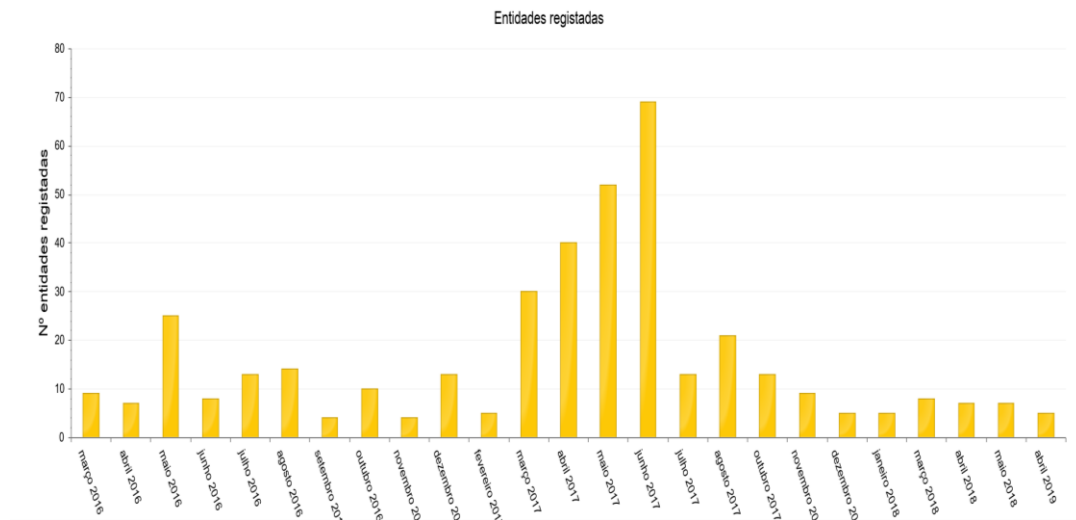


SIIA app is easy to use, just need a PC, a browser and Internet access



SIIA is available to mobile interfaces, smartphone or tablet

Participants – State, Autonomous Regions and local authorities; public and private entities active in the field of infrastructures for: electronic communications, roads, railways, ports, airports, water supply, sewerage, and transport and distribution of gas and electricity, as well as, other bodies holding or exploiting infrastructures that integrate the public domain.

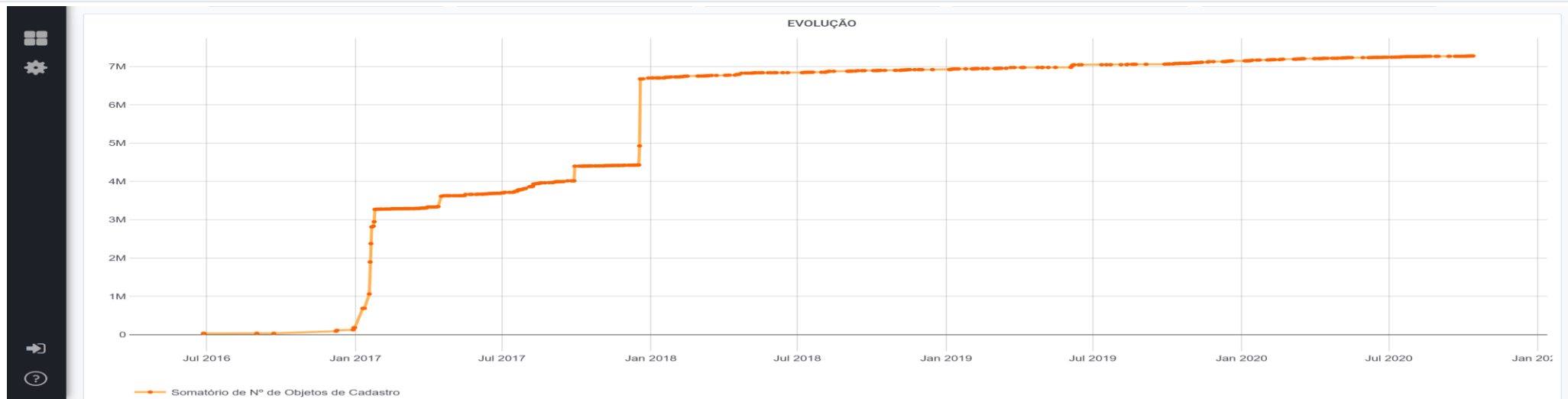


Participants: Total → 431

- 288 – Local authorities
- 51 – Public concession bodies (energy, water, transport and gas)
- 31 – Electronic communications
- 20 – Public domain infrastructures holders
- 17 – Entity under state supervision
- 11 – Public undertakings
- 5 – Sectoral regulator authorities
- 4 – Infrastructure owners
- 3 – State authorities
- 1 – Regional authorities

Objectos cadastrados	Carregamento de dados	Erros topológicos	Anúncios	Utilizadores	Entidades
7290879	182294	469215	181	1193	431

ARMÁRIOS	CÂMARAS DE VISITA	TROÇO DE CONDUTA	TROÇO AÉREO	EDIFÍCIO TÉCNICO
94125	870740	1548138	1143824	3089
GALERIA TÉCNICA	POSTE	TORRE	MASTRO	ENTRADA DE EDIFÍCIO
2156	3600167	6386	5668	1155

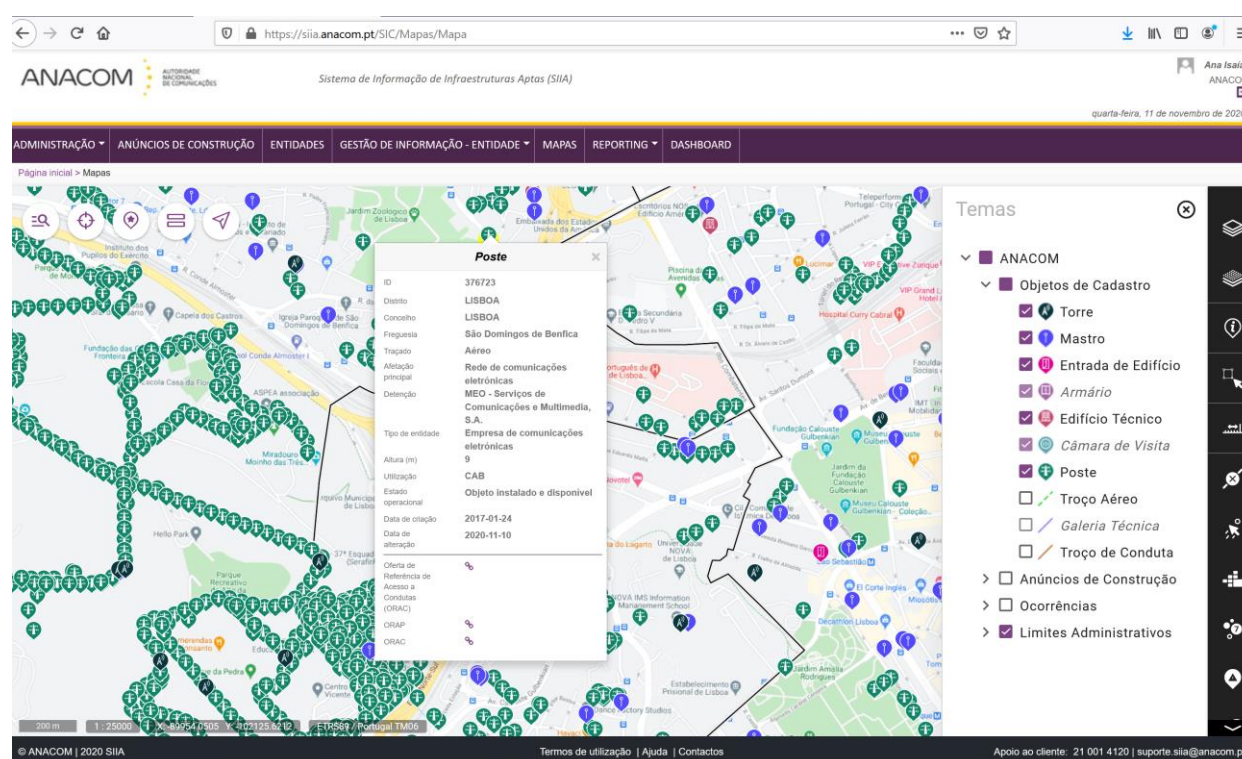


Entities access and use SIIA

- Record, with geo-referenced, comprehensive and integrated information of all infrastructures suitable for the accommodation of electronic communications networks;
- Procedures and conditions that apply to the access to and use of each infrastructure referred to in the preceding point;
- Advertisements on the construction of infrastructures suitable for the accommodation of electronic communications networks;
- Procedures and conditions on which depends the allocation of rights of way.

In the example to the side we have a SIIA menu where we can view all the objects registered in a certain geographical area and highlight a particular object, in this case a Post with all the information that characterizes it.

The following object types are registered at SIIA: tower, mast, building entrance, cabinet, technical building, manhole, post, aerial section, technical gallery and duct section.



All Entities accredited in SIIA have the obligation to place their information in SIIA and to keep it permanently updated.

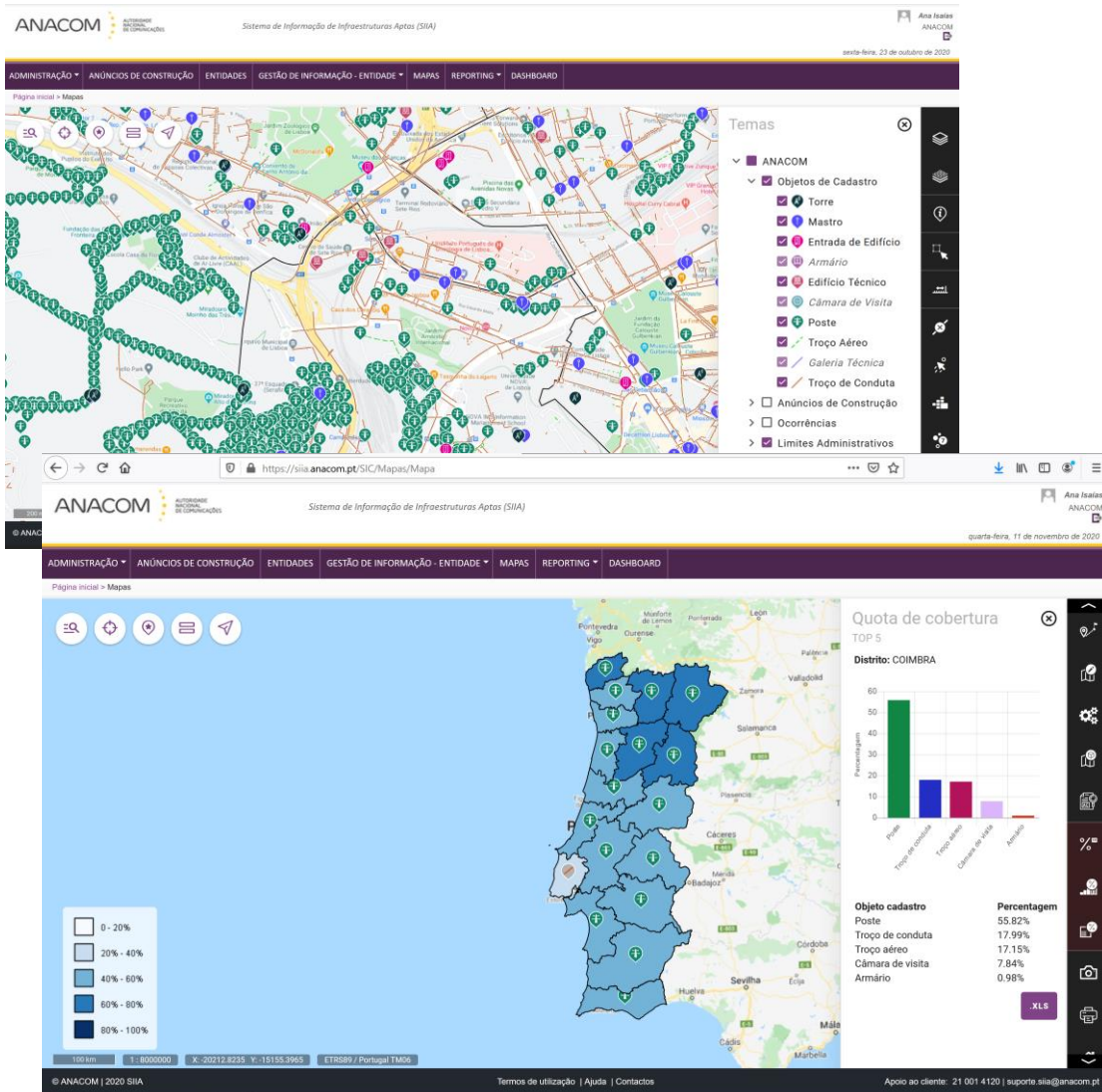
SIIA - Knowledge Integration on Existing Infrastructure

SIIA also functions as an important planning tool at national level, as it allows:

- visualization on a map of georeferenced information about existing infrastructures,
- publishing and viewing construction ads,
- consultation of procedures for access and use of infrastructure,
- Consultation of the conditions for granting rights of way for the construction of infrastructure.

In the side, two examples in which it can be observed all the objects registered in a given geographical area and in the 2nd menu we can view the information on the share of national coverage by type of object of registration.

Clicking on a district displays information about that district in a graph. In this case, we have Coimbra where the largest number of objects are posts, followed by sections of air ducts, aerial sections, manholes and finally cabinets.



Map with integrated and detailed information

The screenshot shows the SIIA web application interface. At the top, the browser address bar displays <https://sii.a.anacom.pt/SIC/Mapas/Mapa>. The page header includes the ANACOM logo and the title "Sistema de Informação de Infraestruturas Aptas (SIIA)". A navigation menu contains options like "ADMINISTRAÇÃO", "ANÚNCIOS DE CONSTRUÇÃO", "ENTIDADES", "GESTÃO DE INFORMAÇÃO - ENTIDADE", "MAPAS", "REPORTING", and "DASHBOARD".

The main content area features a map of the Bragança region. A search filter is applied, showing "Distrito: Bragança", "Concelho: Torre De Moncorvo", "Objeto: Poste", and "Objeto: Troço de conduta". Below the map, a table displays search results:

Id Objeto	Distrito	Concelho	Freguesia
7881279	BRAGANÇA	TORRE DE MONCORVO	União das f
7881301	BRAGANÇA	TORRE DE MONCORVO	União das f
7881326	BRAGANÇA	TORRE DE MONCORVO	União das f
7881327	BRAGANÇA	TORRE DE MONCORVO	União das f
7881332	BRAGANÇA	TORRE DE MONCORVO	União das f
7881335	BRAGANÇA	TORRE DE MONCORVO	União das f
7881340	BRAGANÇA	TORRE DE MONCORVO	União das f

At the bottom of the table, it indicates "A exibir 1 a 10 de 6,474 resultados" and provides navigation options like "Anterior", "1", "2", "3", "4", "5", "...", "648", and "Próximo". There are also buttons for "Limpar", "Filtrar", "Gravar", and "Aplicar". The footer of the page includes "ANACOM | 2020 SIIA", "Termos de utilização | Ajuda | Contactos", and "Apoio ao cliente: 21 001 4120 | suporte.sii.a@anacom.pt".

Another example of information sharing where it is shown the research results on the existence of posts and sections of conduit for a district (Bragança) municipality (Torre de Moncorvo).

The map highlights the respective municipality and the results along with all the detailed information regarding to posts and ducts. existing in the region.

SIIA as an aggregator of information for Suitable Infrastructures will be of fundamental importance in the implementation of 5G at the national level, supporting electronic communications companies to prepare their service offerings.

Continuous improvement, making SIIA the indispensable tool for electronic communications networks installation

Design and development of the solution keeping future SIIA Users informed:

- Monitoring and information meetings
- Functional tests with the participation of future users

Start of production:

- Training actions
- Meetings with the different Entities
- Workshops
- Help in using SIIA and loading information

New SW release:

- New version of SW for Implementation of improvements based on User experience
- Training actions
- Meetings with Entities not yet accredited in SIIA
- Help in Using the SIIA and loading information
- Helpdesk for SIIA Users

New SW release:

- Implementation of 2 new cadastral objects: Mast and Building entrance
- Training actions
- Meetings with Entities not yet accredited in SIIA
- Help in Using the SIIA and loading information
- Helpdesk for SIIA Users

In production:

- Preparation of new requirements and improvements at the GIS level
- Meetings with Entities not yet accredited in SIIA
- Help in Using the SIIA and loading information
- Helpdesk for SIIA Users

New SW release & Mobile version launch:

- Mobile version to be used in field work
- New features to improve the work and use of the platform by Users.
- Possibility to add layers of external georeferenced data, enabling the crossing of information.
- Training via webinars
- Help in Using the SIIA and loading information
- Helpdesk for SIIA Users



2014 – public tender