



Bundesnetzagentur

Infrastructure Mapping in Germany

Steffen Schmitt

Head of Section, Infrastructure Mapping

Federal Network Agency

ITU Regional Regulatory Forum for Europe

30. November 2020



www.bundesnetzagentur.de



We collect and supply data!

3.325 suppliers			
Telecommunications		Electricity	Gas
District Heating	Sewage	Transport	Local authorities

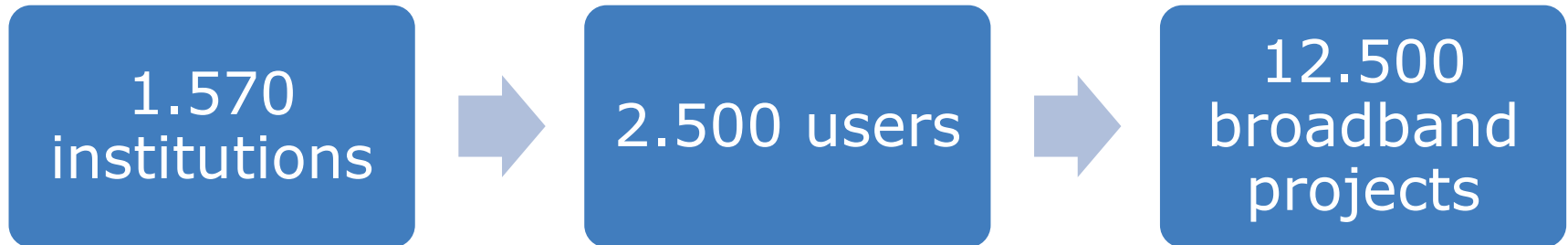


est. 2009

- To show possibilities for shared use of infrastructures in broadband expansion.
- To provide information about the location and availability of existing infrastructures that can be used for broadband expansion.
- To reduce costs.



2009	The federal government's broadband strategy leads to the establishment of the infrastructure atlas by the Federal Network Agency - data delivery voluntary
2012	With Section 77a (3) TKG, the first authorization basis for data deliveries comes into force - WebGIS goes into operation at the end of 2012
2016	BCRD brings far-reaching changes in the Telecommunications Act - consultation for further development
2018	Commissioning of the extended infrastructure atlas
2020	Relaunch with a new interface and various new functions
2021	Implementation of the EECC



Local authorities (federal government, states, districts, cities and municipalities)

Owner or operator of public supply networks

Contractors (broadband competence centers or consultants)

Federal Ministry of Transport and Digital Infrastructure

Check it out! (Test data only)



Bundesnetzagentur

ISA - Planung
Zentrale Informationsstelle

ISA-Mitnutzung

demo@bnetza.de | Logout

Infrastrukturarten

alle anzeigen | keine anzeigen

- Bauarbeiten
- Ausbaufläche
- Funkmast
- Hauptverteiler (HVT)
- Kabelverzweiger (KVZ)
- Point of Presence (POP)
- Zugangspunkt
- Bauwerk
- (Holz-) Mast
- Ampel
- Straßenlaterne
- Richtfunkstrecke
- Glasfaser
- Leerrohr
- Sonstige
- Abwasserleitung

Gebiete

Infrastrukturarten

Infrastrukturinhaber

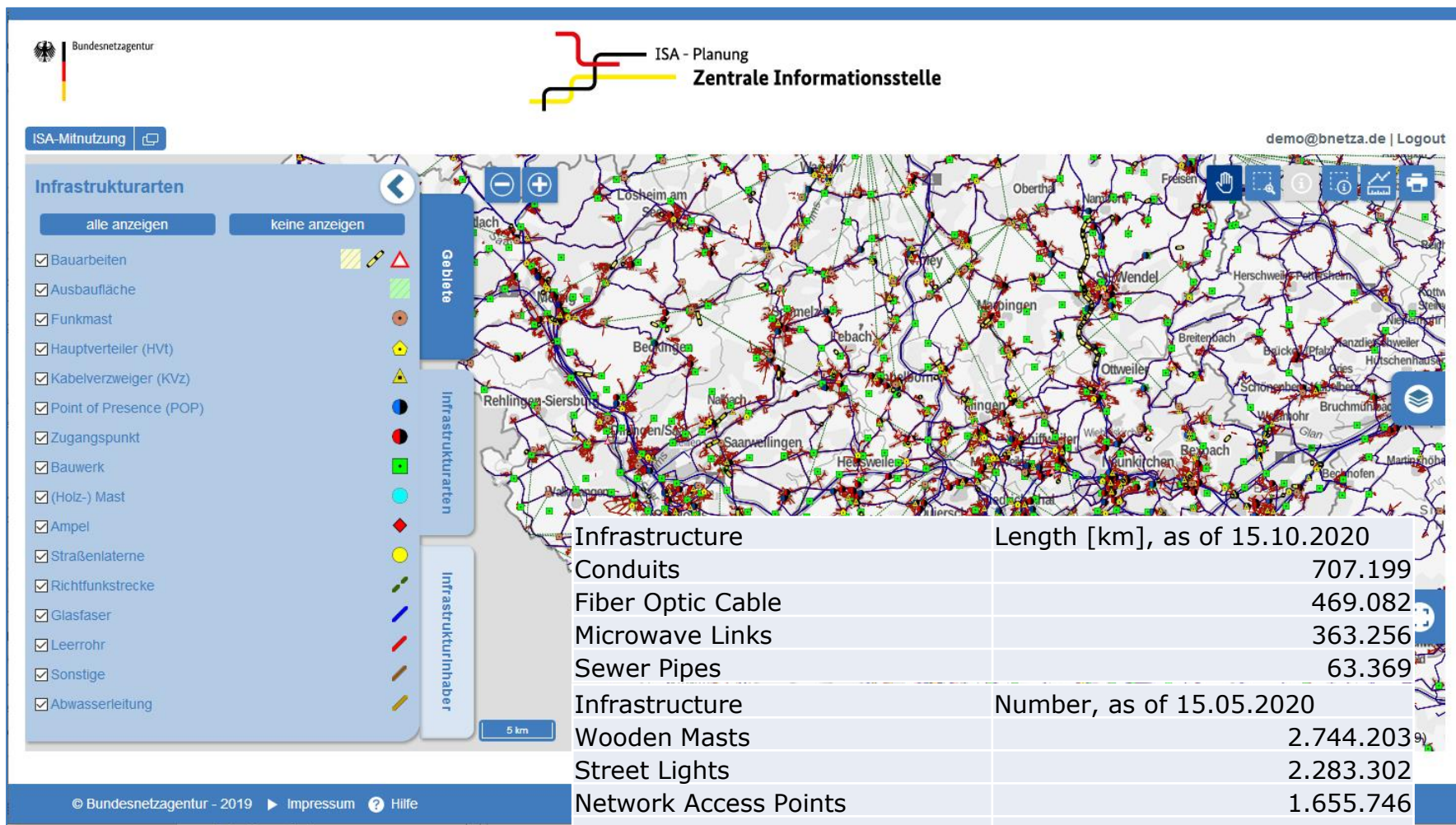
1 : 250.000 (In dieser Zoomstufe werden nicht alle Infrastrukturanlagen angezeigt)

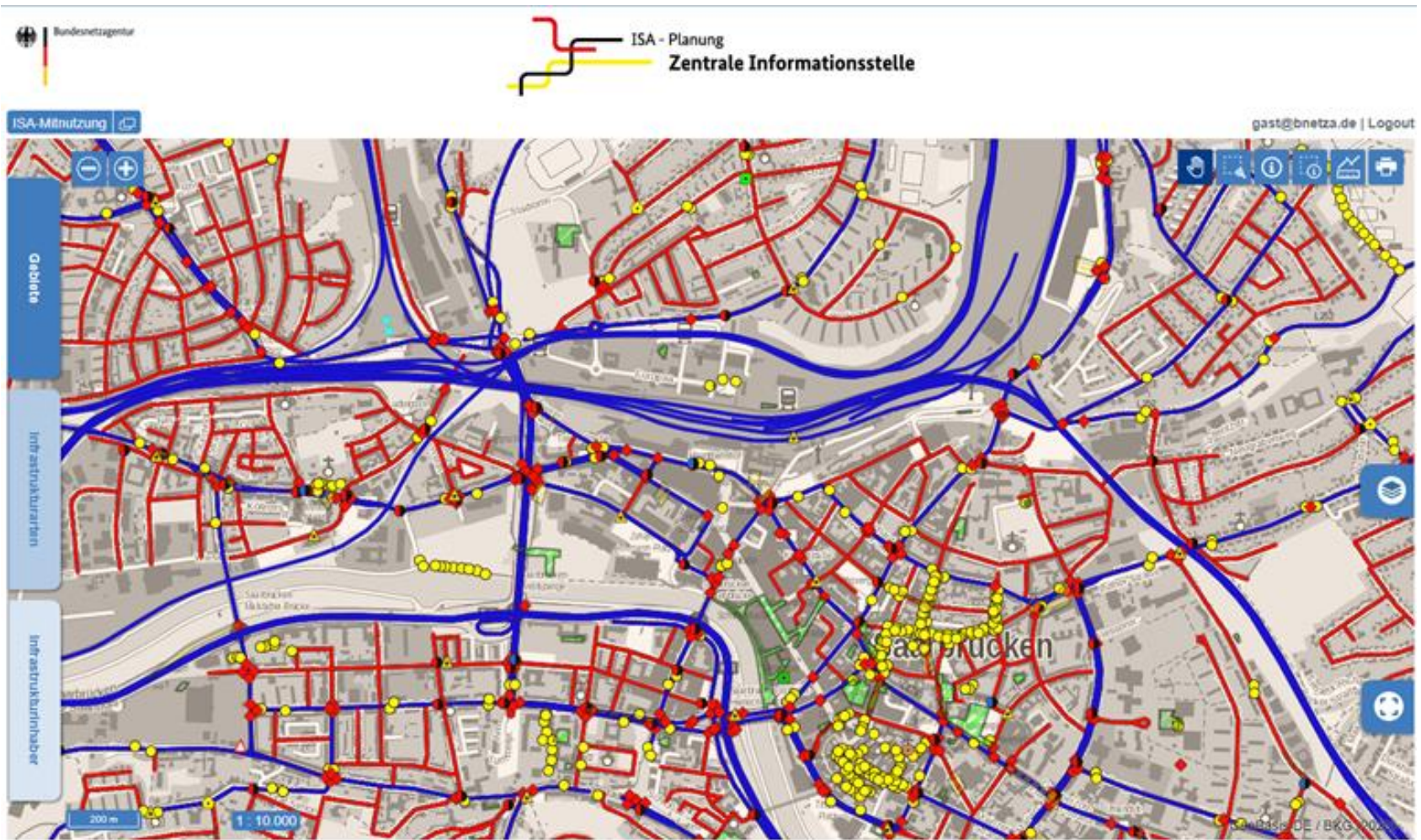
© Bundesnetzagentur - 2019 | Impressum | Hilfe

Test access

LogIn: <https://isa.bundesnetzagentur.de>

Benutzername: `gast@bnetza.de`
Passwort: `gast#2020`
PIN: `56789`





Some pictures – Test data only



ISA - Planung
Zentrale Informationsstelle

ISA-Mitnutzung

gast@bnetza.de | Logout

Infrastrukturarten

Filter

alle anzeigen keine anzeigen

Transparenz

- Bauarbeiten
- Ausbaufläche
- Funkmast
- Hauptverteiler (HV)
- Kabelverzweiger (KVZ)
- Point of Presence (POP)
- Zugangspunkt
- Bauwerk
- Holz / Mast
- Ampel
- Strassenlaterne
- Richtfunkstelle
- Glasfaser
- Lichtrohr
- Schleuse

ISA - Planung
Zentrale Informationsstelle

ISA-Mitnutzung

gast@bnetza.de | Logout

Infrastrukturinhaber

Eingabe zum Filtern

alle anzeigen keine anzeigen

- Eisenbahn (Bundesnetzagentur Demo)
- Energieversorger (Bundesnetzagentur Demo)
- Gasfernleitungsnetzbetreiber (Bundesnetzagentur Demo)
- Kommune [BAU] (Bundesnetzagentur Demo)
- Mobilfunkunternehmen (Bundesnetzagentur Demo)
- Stadwerke (Bundesnetzagentur Demo)
- TK-Netzbetreiber (Bundesnetzagentur Demo)
- TK-Netzbetreiber regional (Bundesnetzagentur Demo)
- Wasserversorger (Bundesnetzagentur Demo)

ISA - Planung
Zentrale Informationsstelle

ISA-Mitnutzung

gast@bnetza.de | Logout

Infrastruktur

Infrastrukturart:	Glasfaser
Infrastrukturtyp:	A-DQJ7N8Z7Y6G50125um
Branche:	Telekommunikation
Gegenseitige Nutzung:	Kapazitäten werden zur Mitnutzung aktiv angeboten
Geförderte Infrastruktur:	Ja
Infrastrukturinhaber:	TK-Netzbetreiber (Bundesnetzagentur Demo)
Ansprechpartner:	
E-Mail:	tk-netzbetreiber@demo02.de
Telefon:	
Aktualität:	14.01.2020
Lagegenauigkeit:	bis zu 10 cm
Bemerkung:	

ISA - Planung
Zentrale Informationsstelle

ISA-Mitnutzung

gast@bnetza.de | Logout

Infrastruktur

Infrastrukturart:	Glasfaser
Infrastrukturtyp:	A-DQJ7N8Z7Y6G50125um
Branche:	Telekommunikation
Gegenseitige Nutzung:	Kapazitäten werden zur Mitnutzung aktiv angeboten
Geförderte Infrastruktur:	Ja
Infrastrukturinhaber:	TK-Netzbetreiber (Bundesnetzagentur Demo)
Ansprechpartner:	
E-Mail:	tk-netzbetreiber@demo02.de
Telefon:	
Aktualität:	14.01.2020
Lagegenauigkeit:	bis zu 10 cm
Bemerkung:	

Hintergrundkarte

- Web-Atlas DE
- Digitale Orthofotos



- The infrastructure atlas is a web-based geographic information system (web GIS)
- Map generation and presentation as an individual solution based on open source software components (Angular, OpenLayers, Geoserver)
- Data storage on relational database systems (PostgreSQL and Oracle Database)
- In future, access via an OGC-compliant WMS interface
- Germany-wide representation of:
 - approx. 7 million point infrastructures
 - 1.6 million kilometers of line infrastructure
 - increasingly also area infrastructures
- Representation takes place in the scale range from 1:1000 to 1:250,000



- **...the data situation...**
- Many different systems and formats
- Heterogeneous data deliveries
- Industry-specific nomenclature and abbreviations
- Company-internal document systems that were not primarily designed for data export
- Systems that have evolved over time.
- Corporate mergers require the migration of different systems.



- **Confidentiality**
 - Company and business secrets demand high safety measures
- **Completeness**
 - Get all relevant information
- **Intersectoral**
 - Pool different industry sectors
- **Usability**
 - Should be easy to use
- **Transparency**
 - Deliver relevant information to where it is needed



Any questions?

infrastrukturatlas@bnetza.de

Steffen Schmitt

+49 228 14-1150

steffen.schmitt@bnetza.de