

4G/LTE THROUGHPUT MAP

ITU Regional Regulatory Forum for Europe
“Regulation Supporting the Digital Transformation”
30 November - 1 December 2020

Vaidas Banevičius
Chief Specialist of Spectrum Engineering Division
Communications Regulatory Authority of the Republic of Lithuania (RRT)



Motives/Changes/Goals



EU strategic goals



by 2020 >30 Mbps
by 2025 >100 Mbps

Changes



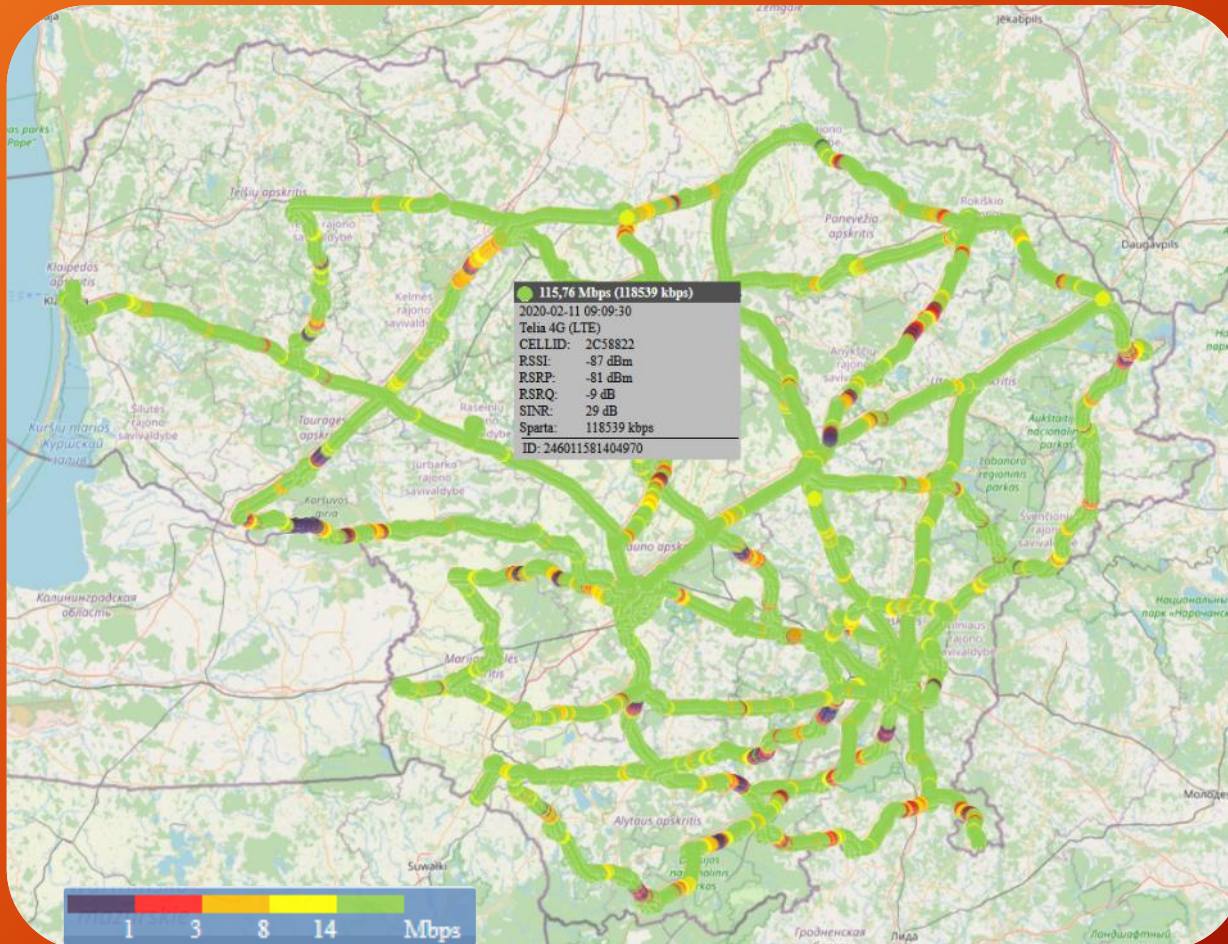
Tool for regulator



Tool for user



LTE measurements



<http://matavimai.rtt.lt/>

Practice and challenges



Preparation phase in Lithuania took almost 2 years:

- ✓ New more detailed digital map data
- ✓ Measurements and propagation model tuning
- ✓ Development of the methodology
- ✓ Data speed calculation tests
- ✓ Meetings with operators (3-4)
- ✓ The first calculations were officially published in June 2020

Challenges:

- ✓ Difficult to verify calculation results
- ✓ Constantly changing network load
- ✓ Operators refused to share network load because it's treated as sensitive and confidential. Finally it was agreed to use network load of 10% and 50%
- ✓ Prepare disclaimer (explanation) to the public on the throughput maps

LTE network load

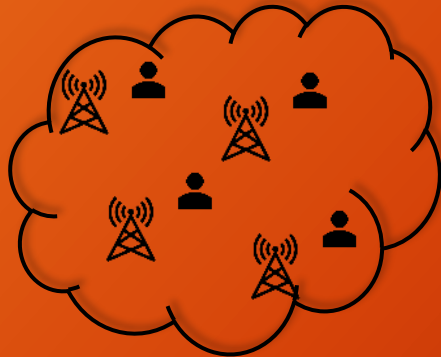


Model 1



10 %

- ✓ Shows operator network capabilities for downloading data
- ✓ Based on this model, we can evaluate the implementation of the EU strategic objectives and the requirements set out in the operators licenses



Model 2



50 %

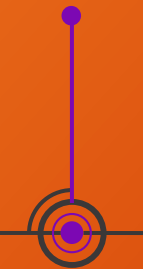
- ✓ Shows the situation on an average loaded network
- ✓ More applicable for user data speed predictions in daily service usage



Calculation process



PREPARATION



1 week



COVERAGE
CALCULATION



1 week



THROUGHPUT
CALCULATION



2 weeks



PROCESSING
OF RESULTS

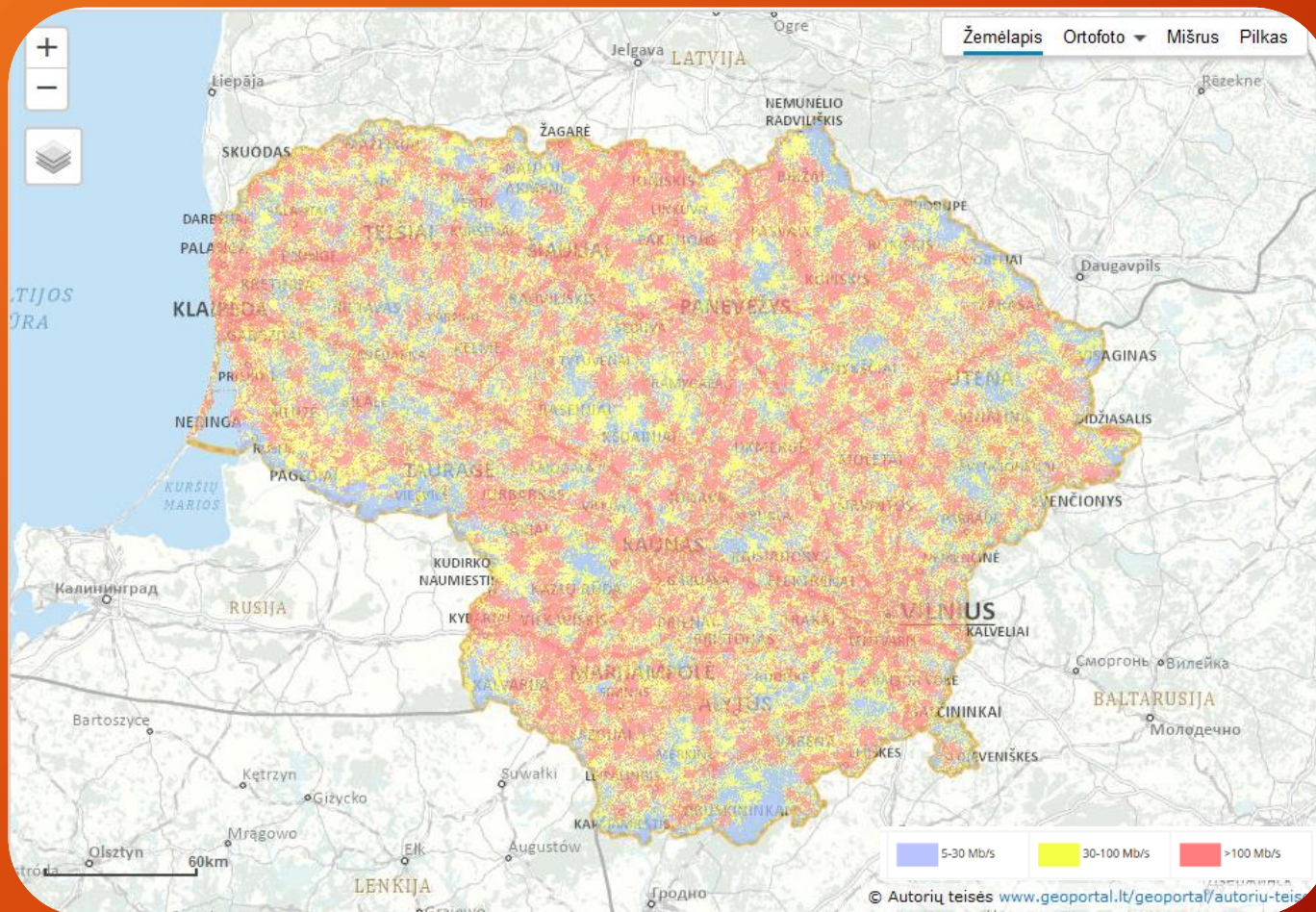


1 week



Total duration – 5 weeks

Throughput map

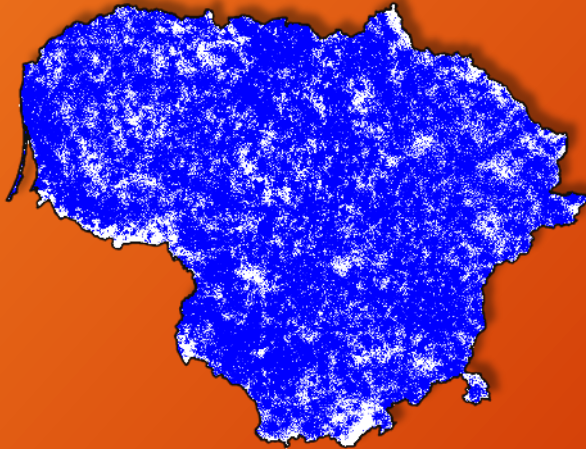


<https://www.rrt.lt/judriojo-ryσιο-tinklu-teoriniai-spartos-skaiciavimai/>

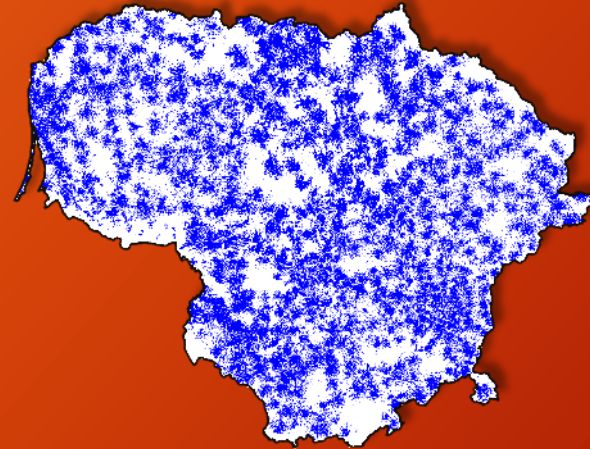
Throughput (network load)



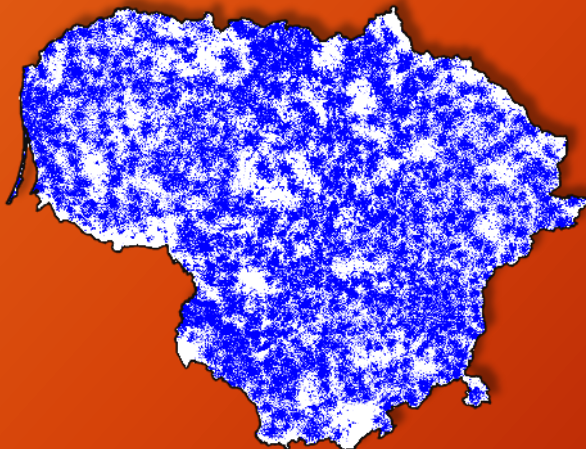
30 Mbps (10 %)



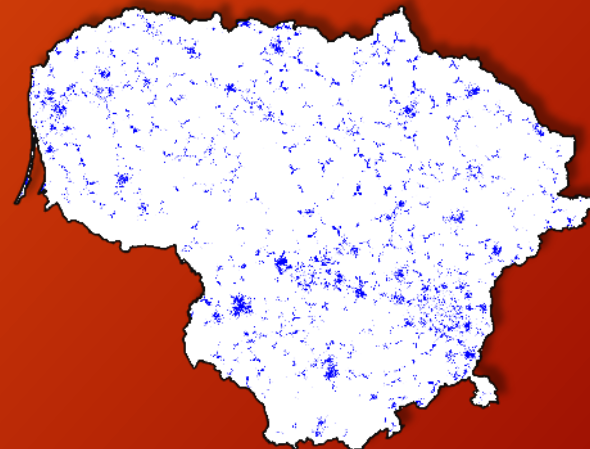
100 Mbps (10 %)



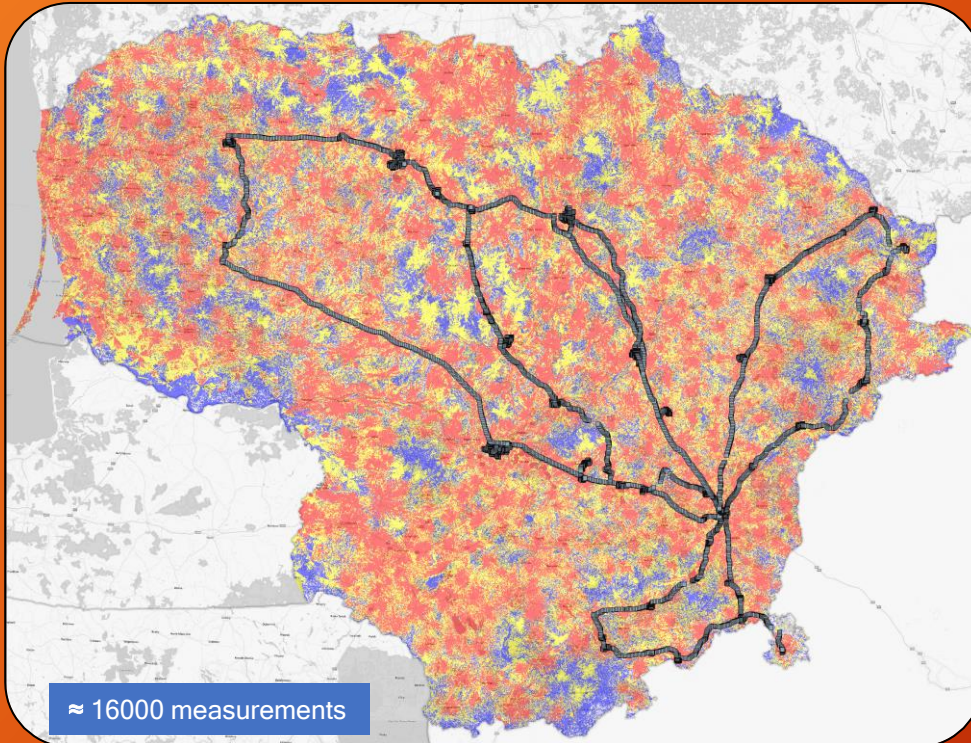
30 Mbps (50 %)



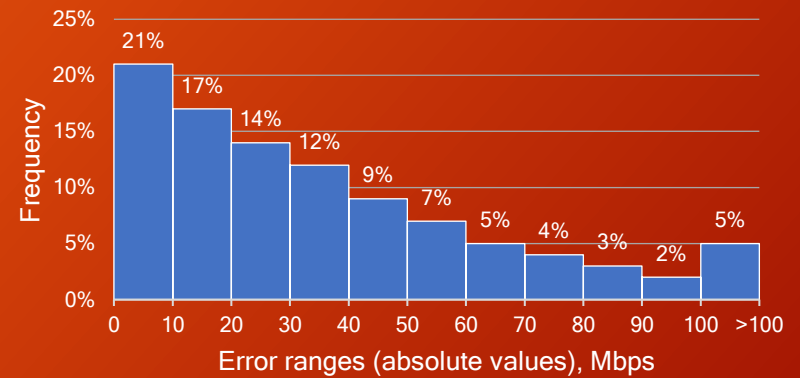
100 Mbps (50 %)



Comparison with drive test



Error distribution



Method	Average throughput, Mbps		
	Operator 1	Operator 2	Operator 3
Drive test measurements	50	74	87
Simulation 10% load	98	159	183
Simulation 50% load	43	68	80

Summary



- ✓ Throughput calculation is a complex and specific task as we need to consider a lot of factors
- ✓ Lithuania is one of the first regulators doing throughput calculations
- ✓ Allows to evaluate throughput coverage across the country, and this could help for executing geographical estimations of Mobile IAS availability
- ✓ Would encourage the competition in the market
- ✓ Enables consumers to compare and choose mobile service provider based on their needs



Thank you!

Communications Regulatory Authority
of The Republic of Lithuania
Chief Specialist of
Spectrum Engineering Division

Vaidas Banevičius

vaidas.banevicius@rrt.lt