



EC infrastructure mapping for common use in Republic of Serbia

ITU Regional Regulatory Forum for Europe on Regulation
Supporting Digital Transformation

Broadband Mapping Systems in non-EU countries

30th November 2020



RATEL infrastructure mapping system database

Capacities which may be subject of request by EC operators:

- Type;
- Availability;
- Geographic location;
- Shared use/access only.





RATEL infrastructure mapping system database

Infrastructure **data** publicly available:

- Detailed;
- Geo-referenced;
- Structured;
- May be subject of sharing.





RATEL infrastructure mapping system database

Current **regulatory framework** covers:

- Cable infrastructure data;
- Antenna towers/masts;
- Other cable elements/equipment.





RATEL infrastructure mapping system database

Main **reasons** for mapping of shared infrastructure:

- Optimization of deployment;
- Less new networks setting-up costs;
- Better planning/cost sharing;
- Accelerating development of NGN.





RATEL infrastructure mapping system database

Purpose of using shared infrastructure:

- Competitiveness;
- Effective and efficient performances;
- Impossible to construct or install a new network / facilities.





RATEL infrastructure mapping system database

Raising **awareness** for detrimental effects on:

- Environment;
- Public security;
- Realization of spatial plans;
- Preservation of cultural heritage.





RATEL infrastructure mapping system database

Database presentation **consists of** the following parts:

- implementation strategy;
- current status of database;
- web application preview;
- types of data;
- future plans.





RATEL infrastructure mapping system database

Strategy of infrastructure mapping system:

- Law on Electronic Communications;
- Rulebook of methods for data collecting and publishing;
- Detailed geographic and structural data;
- EC operators responsibilities.



RATEL infrastructure mapping system database

Status of database:

- > 30 registered operators (180 total);
- > 1800 antenna towers / masts;
- > 1500 fiber optic cables;
- > 200000 other cable elements;
- > 7000 database access / year.

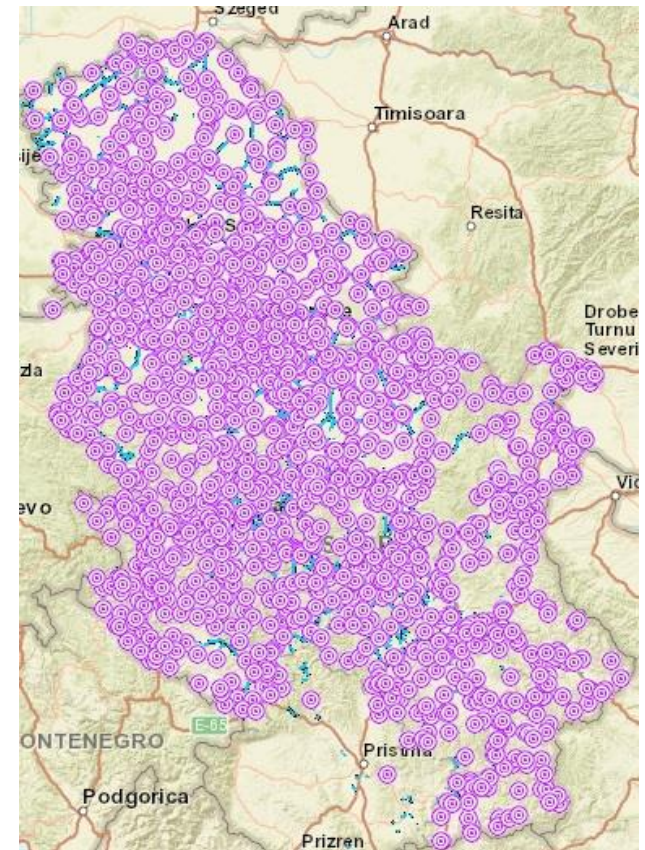




RATEL infrastructure mapping system database

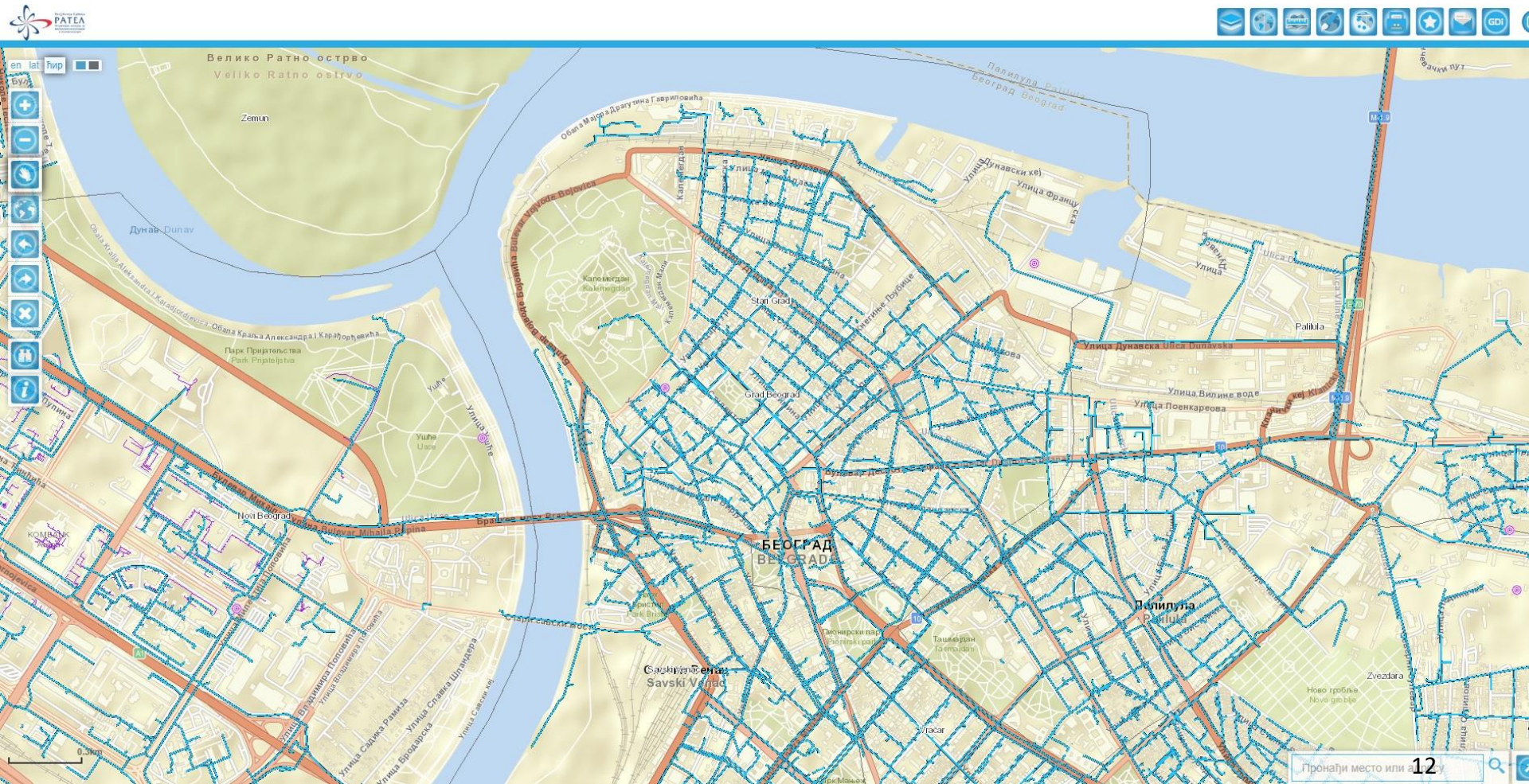
Web application preview:

- Web GIS application;
- User/pass secured logging;
- EC operators and RATEL admin only;
- Clearly defined instructions;
- 2 modes of access registration R/W.





RATEL infrastructure mapping system database





RATEL infrastructure mapping system database

The screenshot displays a web-based mapping application for the Belgrade region. The map shows a dense network of streets and infrastructure. Overlaid on the map are several layers of infrastructure data, including antenna stubs (ANTENSKI STUB), cable channels (KK - OKNA, KK - NASTAVCI, KK - ZAVRŠECI), cable routes (TRASA), cable TV infrastructure (KABLOVSKA KANALIZACIJA, KABLOVI), and administrative boundaries (OPŠTINE I GRADOVI). A legend titled 'Садржај мапе' (Map Content) is visible in the bottom right corner, listing these layers with their corresponding symbols and checkboxes. The map interface includes standard navigation controls on the left and a search bar at the bottom right. A small tooltip at the bottom center reads 'Кликните на карту да бисте идентификовали тачку' (Click on the map to identify the point).

Кликните на карту да бисте идентификовали тачку



RATEL infrastructure mapping system database

Infrastructure sharing data (**cables**):

- Name of operator (owner)/location/route;
- WGS84 coordinates of important points (start/end, hub);
- Cable type and route length/geodetic record;
- Other information (type of pipes/number of pipes on the route/manhole type/number of manholes on the route);
- Capacity for lease/unused capacity;
- Cable installments and ending data (optional).



RATEL infrastructure mapping system database

Infrastructure sharing data (**antenna towers / masts**):

- Name of operator (owner);
- Location of antenna tower / mast and construction data;
- Shape of tower / mast base and dimensions (m);
- Tower / mast height (m) and object height (m);
- Free space (segment length / available azimuth range);
- Mounted equipment (type / free capacity) - optional.



RATEL infrastructure mapping system database

Standard mapping **GIS tools**:

- Switching on / off the layers;
- Zooming;
- Measurement of distance / surface;
- Selection of data using spatial queries / by hand;
- Exporting selected data to Excel;
- Background selection through free ArcGIS online service.



RATEL infrastructure mapping system database

Improvements and **Future** plans:

- Mapping of all EC infrastructure;
- Binding with other sectors;
- Active infrastructure sharing;
- Open data approach.





RATEL infrastructure mapping system database

Thank you for your attention.



Branko Mirkovic

branko.mirkovic@ratel.rs