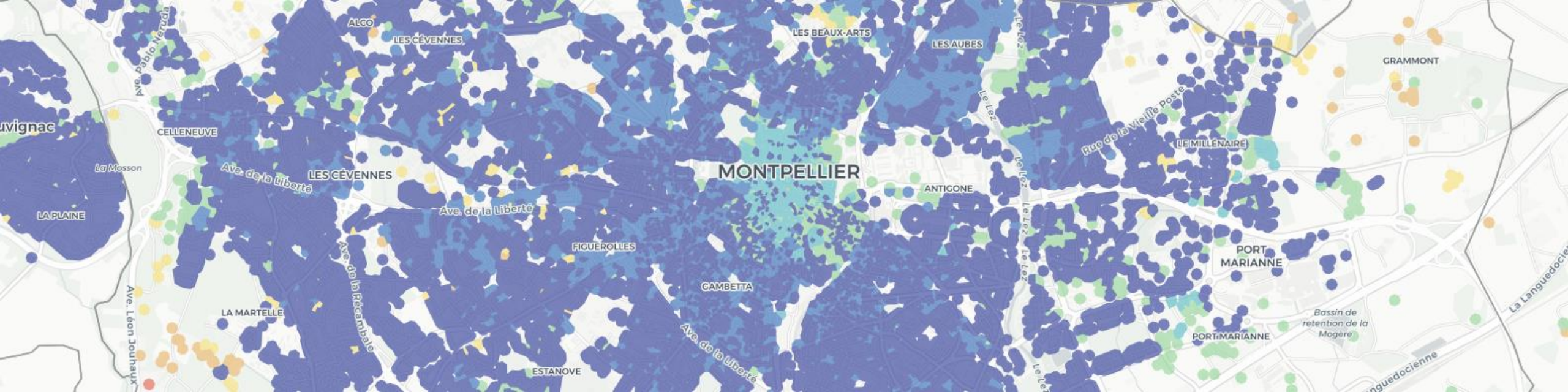




From market analysis to market visualisation: enabling environment for evidence based regulation

Antonin Borgnon
Deputy Head - Coverage and Rollouts
Unit

28/09/2021

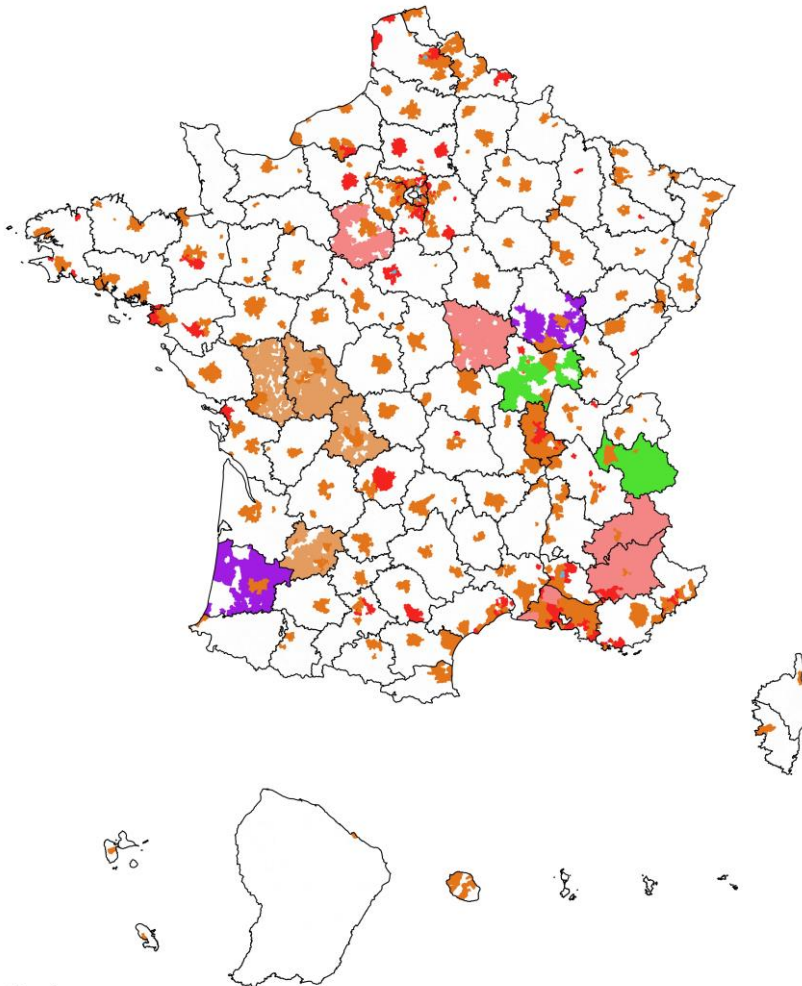


Broadband mapping website

<https://maconnexioninternet.arcep.fr>

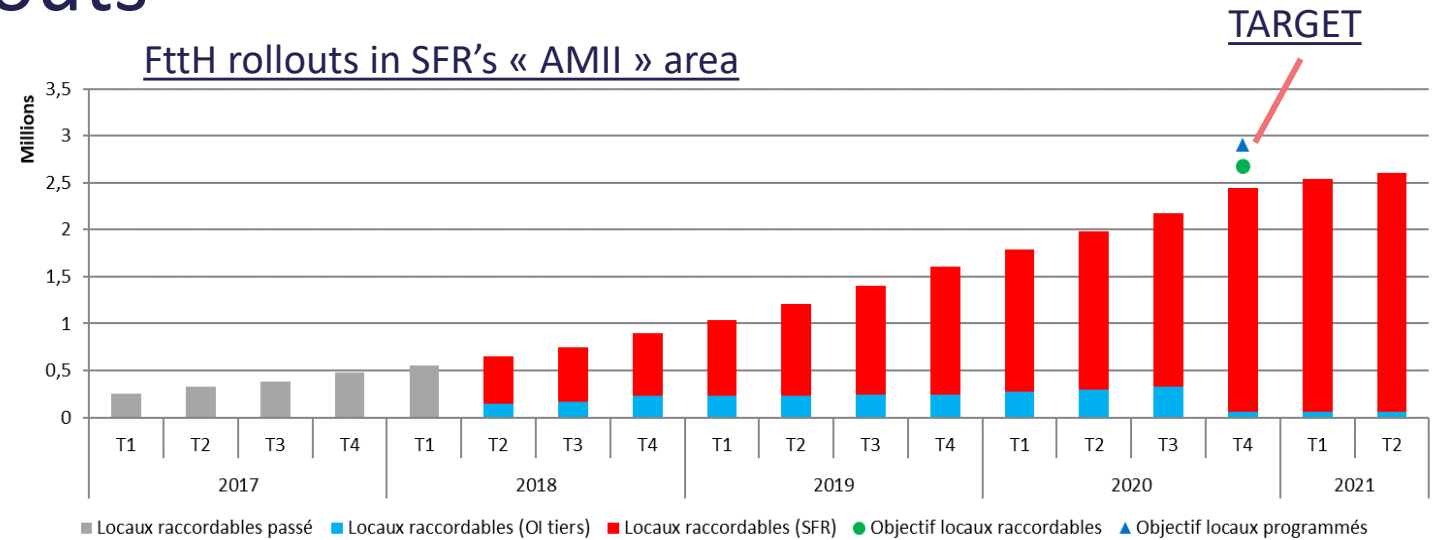
Case study 1: following the calendar engagements of operators for FttH rollouts

Carte présentant les engagements L33-13 AMII et AMEL pris par les Opérateurs sur certaines communes à fin 2020

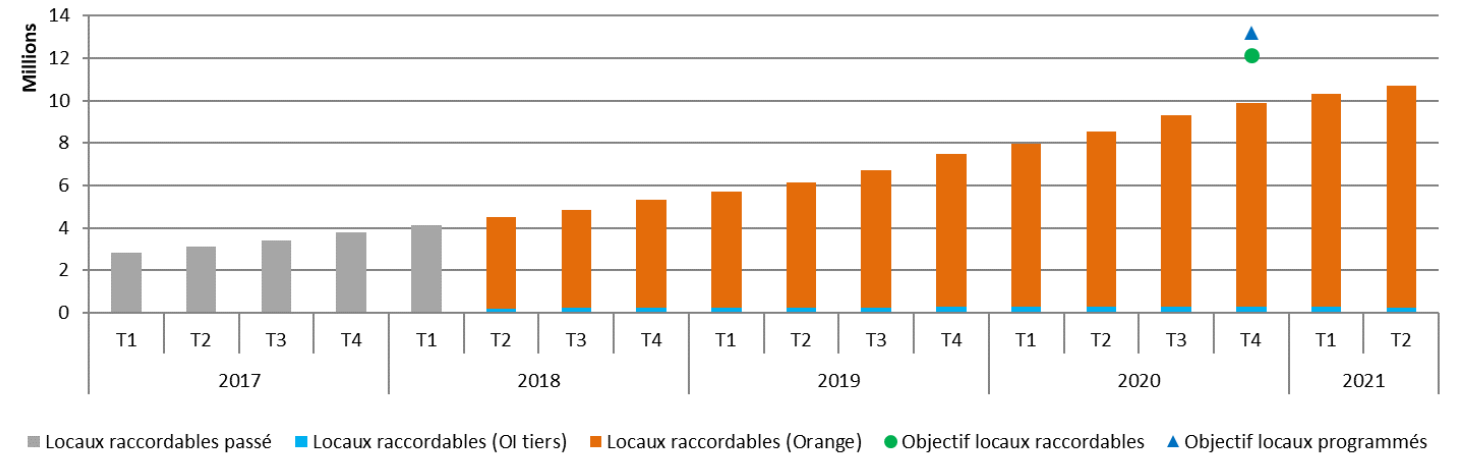


- Légende
- Orange AMII
 - Mixte AMII
 - Covage AMEL
 - SFR FttH AMEL
 - Altitude Fibre AMEL
 - Orange AMEL

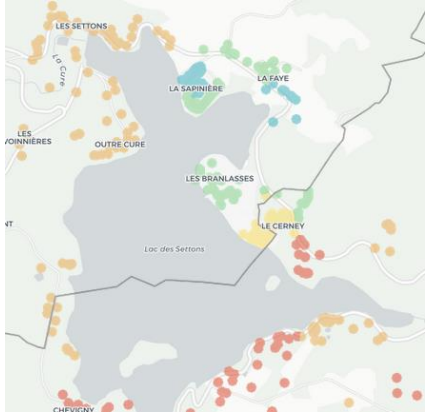
FttH rollouts in SFR's « AMII » area



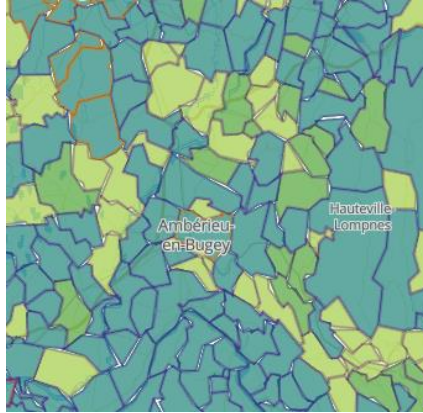
FttH rollouts in Orange's « AMII » area



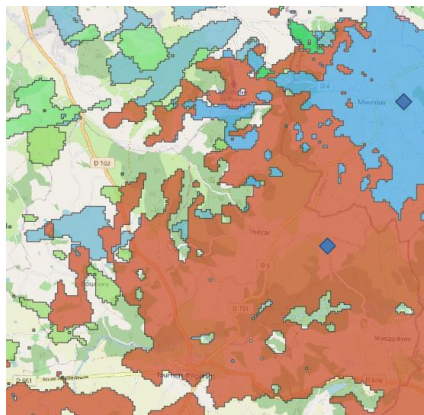
Case study 2: forecast of broadband access evolution between 2020 and 2025



Current situation



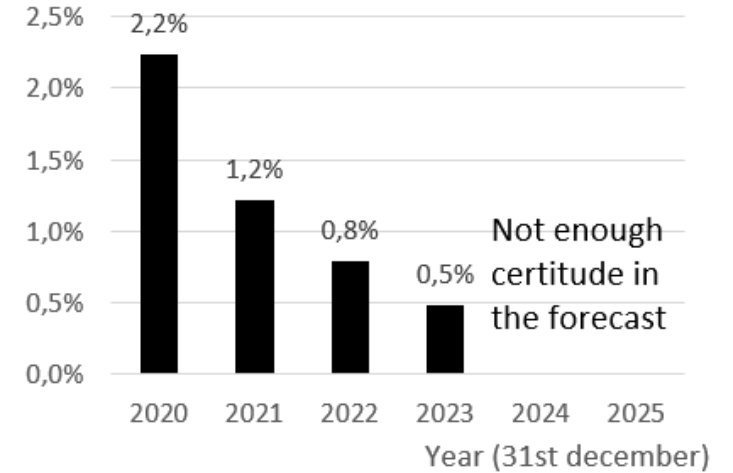
FttH rollouts forecast



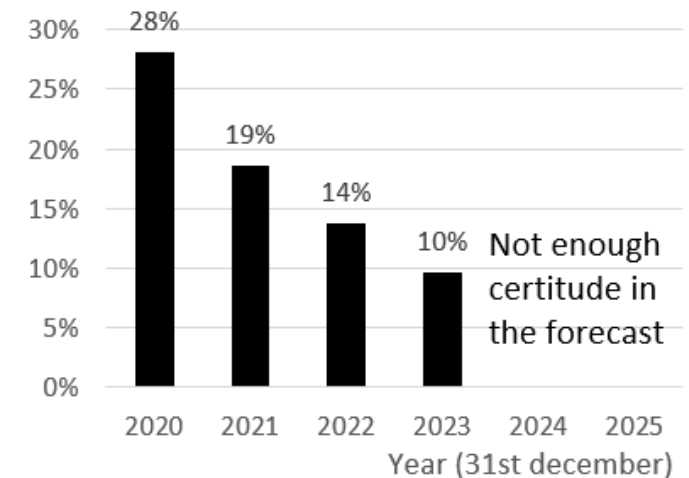
Fixe Wireless Access sites deployment forecast

MODEL
(FttH rollouts speed in an area)

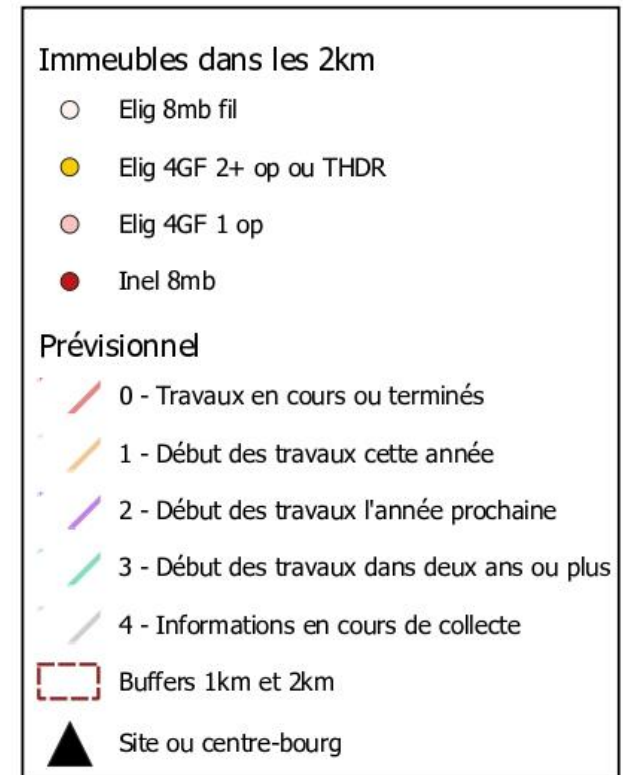
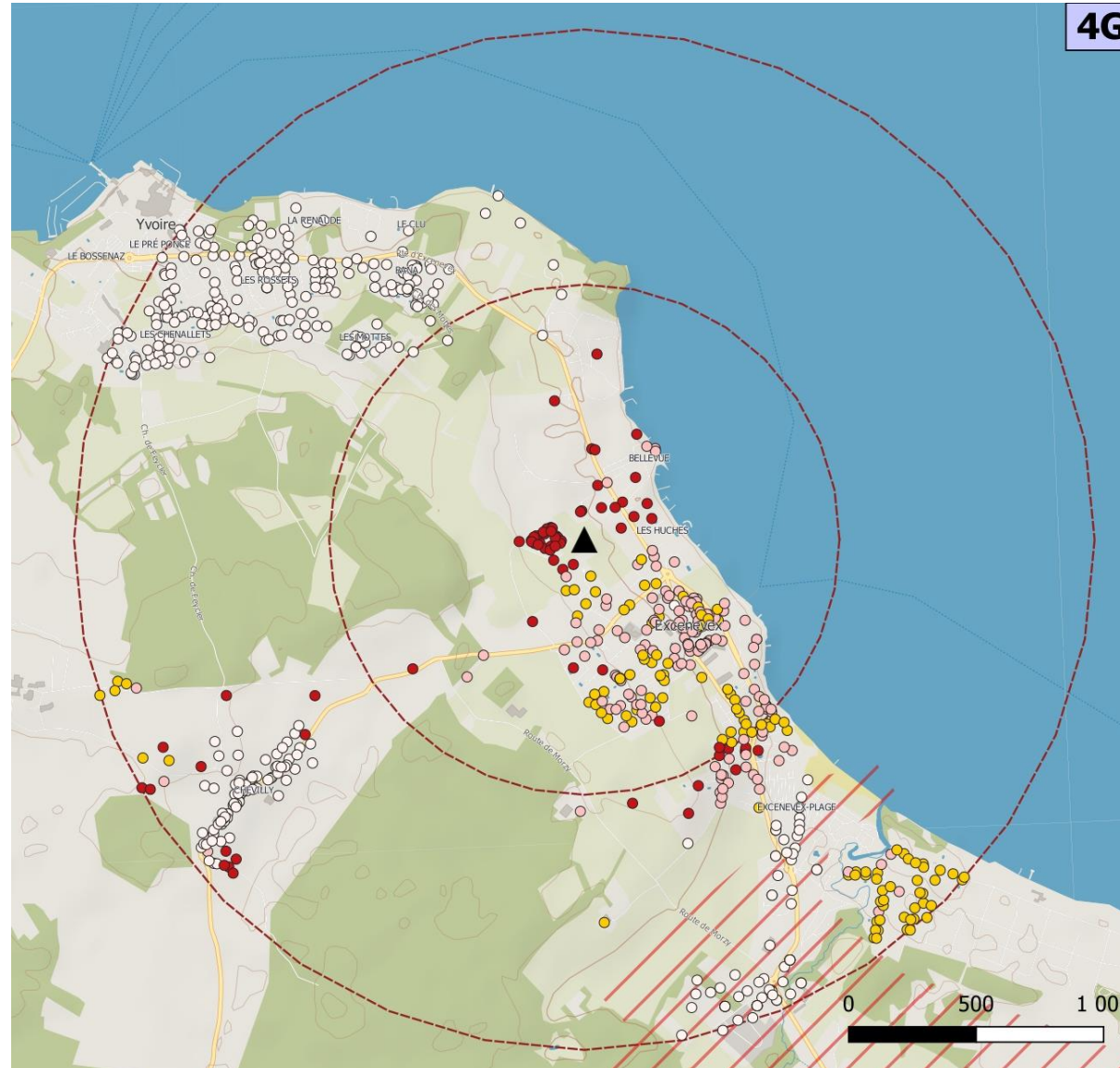
Percentage of premises that depends of satellite networks to access 8 Mbit/s

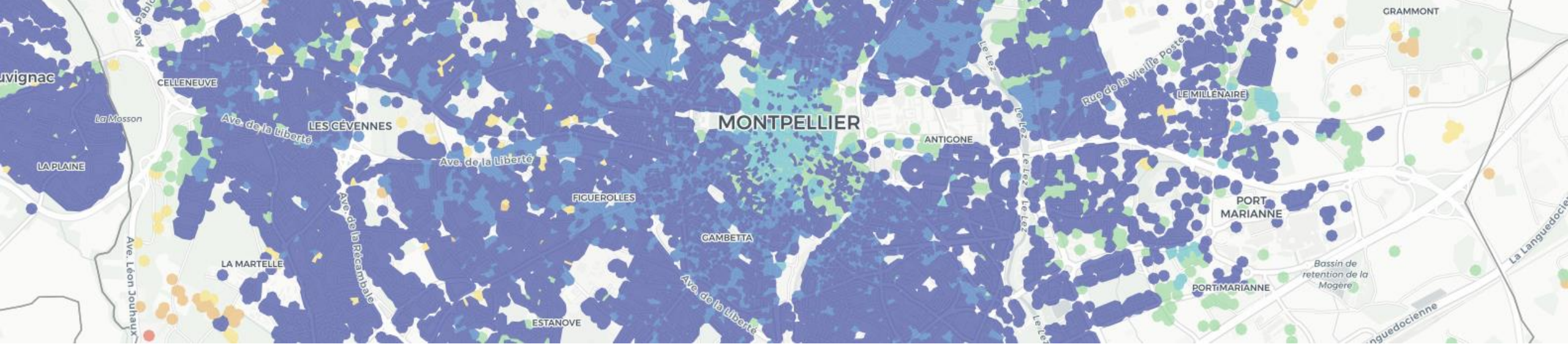


Percentage of premises that depends of satellite networks to access 30 Mbit/s



Case study 3: studying the opportunity of installing a new mobile site to enhance FWA access in the area





Ressources

Websites:

Fixed broadband: <https://maconnexioninternet.arcep.fr/>

Open data: <https://www.data.gouv.fr/fr/datasets/ma-connexion-internet/>

Technical information: <https://www.arcep.fr/cartes-et-donnees/nos-cartes/ma-connexion-internet-documentation-technique.html>

Mobile broadband: <https://monreseau-mobile.arcep.fr/>

Contacts: contributionmci@arcep.fr | antonin.borgnon@arcep.fr