



Connectivity Mapping and Visualization

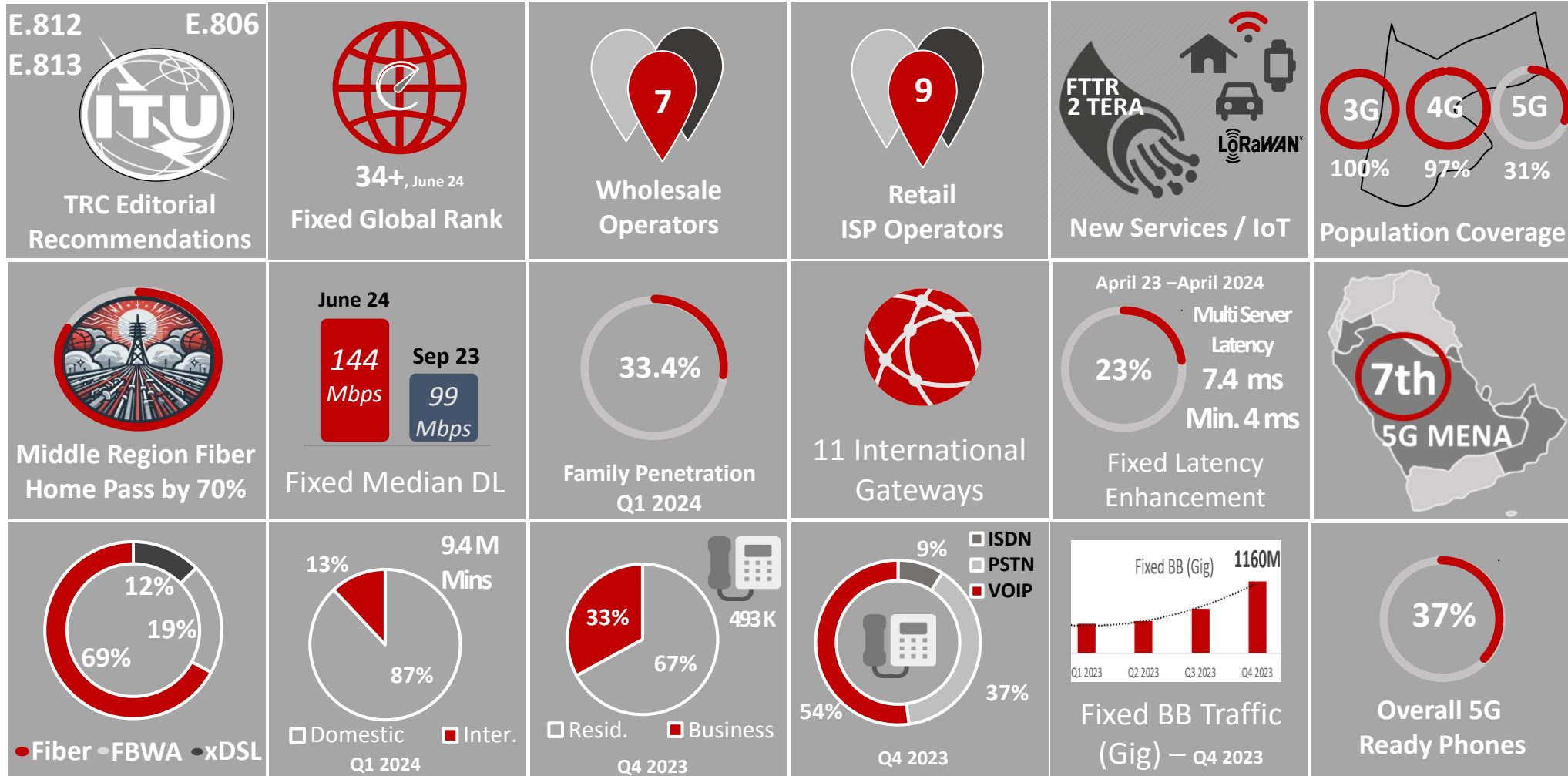
Broadband Infrastructure

25/7/2024

Eng. Zeid Al-Kadi

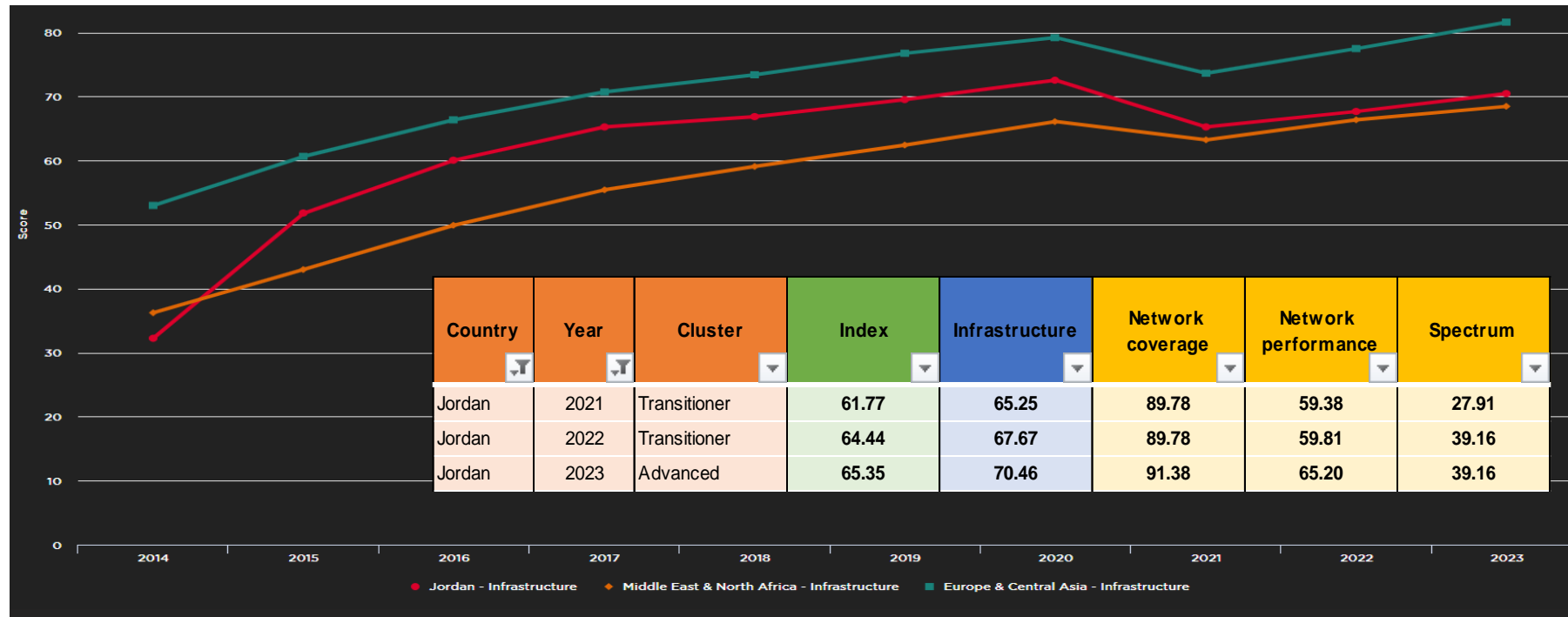
Director of Licensees and Consumer Affairs, TRC Jordan

Jordan Connectivity Status



Jordan Status: GSMA MCI, Infrastructure Ranking:

- GSMA classifies Jordan infrastructure as Advanced with a score of 70.5
- 2023 GSMA MCI Rank, Jordan Cluster advancement from Transitioning to Advanced.
- The score enhancement to Infrastructure as enabler was mainly due to better network coverage and performance.



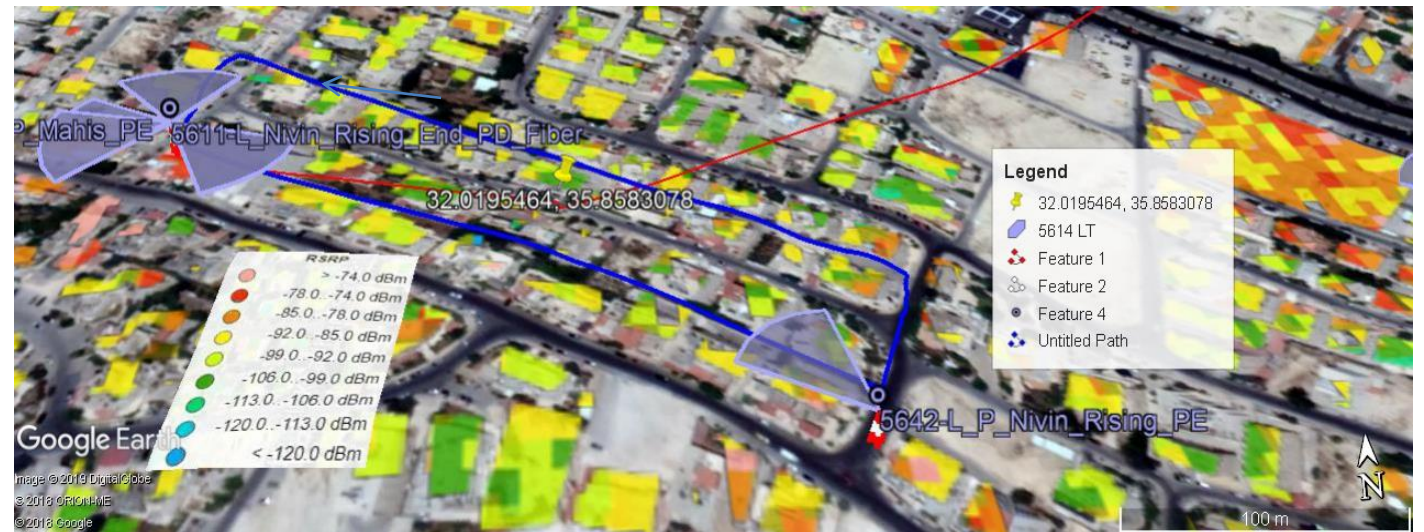
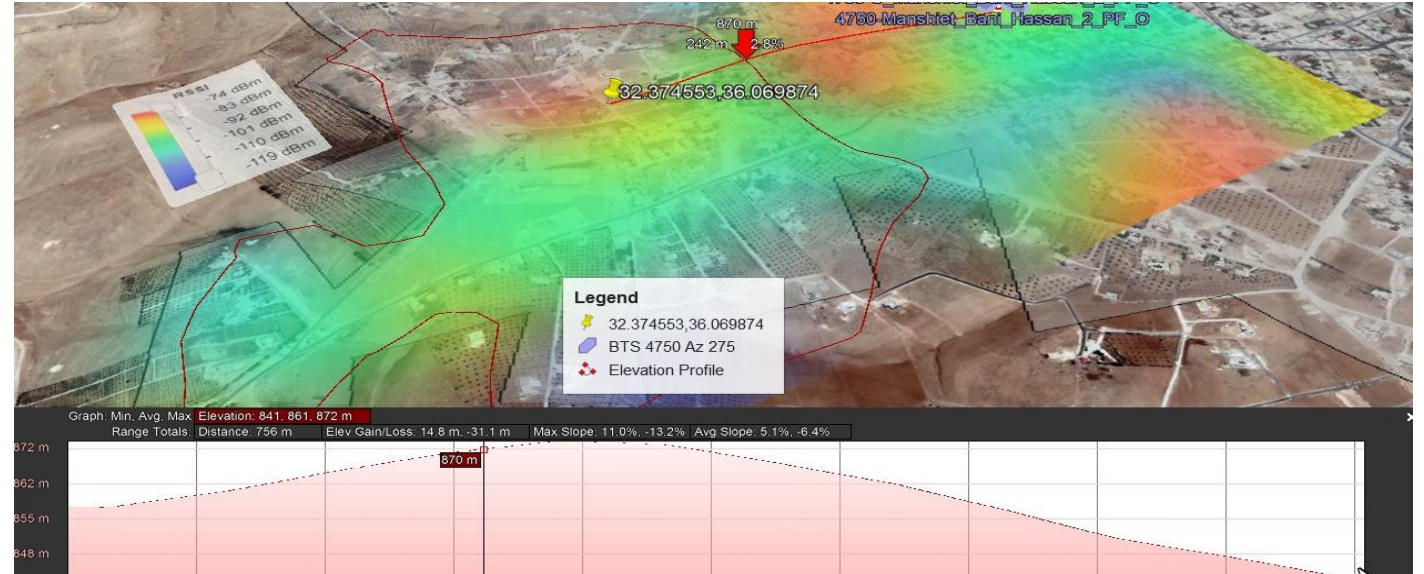
Data Collection and Visual Data Representation:

Combining multiple data layers such as Traditional drive test data, Crowdsourced data, demographic and socio-economic data enhances BB mapping and knowledge of unserved and under served areas.



Currently TRC, uses built-in GIS tools in Cell Analytics, STI Platforms from Ookla in addition to Google earth. A more sophisticated tool project using ESRI Platforms is planned this year.

Examples: Deploying Data Layers in GIS systems



Mapping and Visualization Strategies, E.813 ITU Recommendation Scope:

- To construct a composite connectivity index (CI) based on different toolboxes
- To geographically map and visualize (CI) index or any underlying relevant parameter.

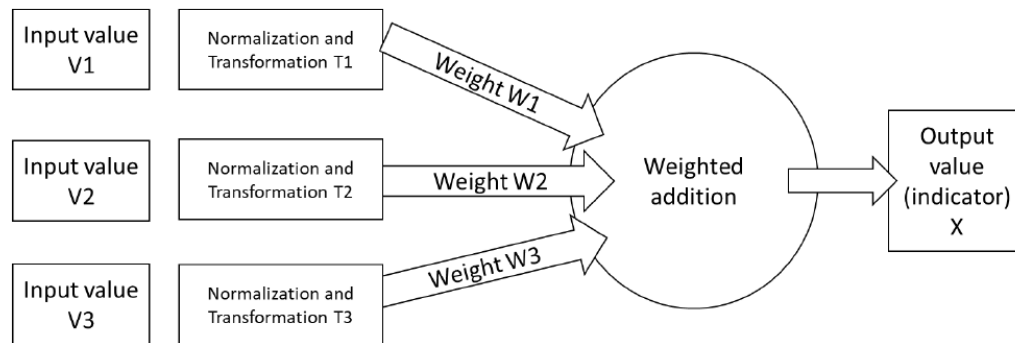


Figure 1 – Example of the construction of a composite index

Recommendation

ITU-T E.813 (05/2024)

SERIES E: Overall network operation, telephone service, service operation and human factors

Quality of telecommunication services: concepts, models, objectives and dependability planning – Models for telecommunication services

Mapping and visualization strategies for the assessment of connectivity

CAUTION!
PREPUBLISHED RECOMMENDATION

This prepublication is an unedited version of a recently approved Recommendation. It will be replaced by the published version after editing. Therefore, there will be differences between this prepublication and the published version.

E.813 New Definitions

Connectivity: Two-way access to telecommunication services related to performance and usability.

Connectivity index: A scalar level that represents the overall degree of connectivity, evaluated at a particular time and applicable for a specific duration and geographical area.

Mapping: The process of illustrating values or parameters in a geographic information system (GIS).

Data Tools

