

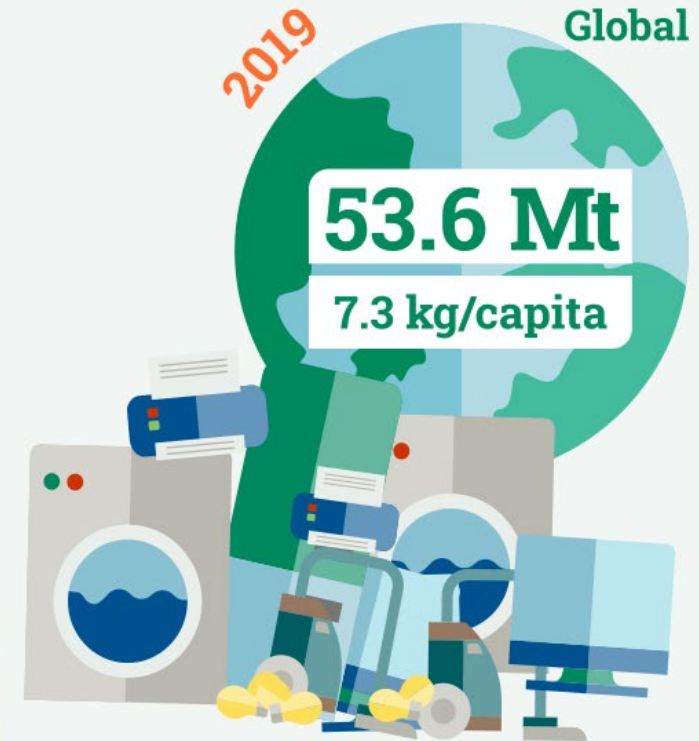
EACO Regional E-waste Data Harmonization

Project Overview



Importance of e-waste data

- Improve comparability between countries.
- Serve as a basis for e-waste statistics, e-waste indicators and contribute to the SDGs.
- Evaluate developments over time, set and access targets, identify best practices for policy.
- Two approaches of collecting e-waste data; household data complements supply data and provides additional insights.



Project background and objectives

- Provide technical assistance to 6 East African Communications Organisation (EACO) members to harmonize e-waste data collection.
 - [Burundi, Kenya, Rwanda, South Sudan, Tanzania and Uganda.](#)
- Support the relevant strategic actions of the EACO Regional E-waste Management Strategy.
- Sustain a regional e-waste database maintained by the EACO Secretariat.
- Ensure continuation of previous e-waste data and statistics support provided by the Global E-waste Statistics Partnership in the region.

Project partners:



The Global E-waste Statistics Partnership

Global E-waste Database

Collecting country data and building a global e-waste database to track developments over time.

Creating Awareness

Enhancing understanding and interpretation of global e-waste data.

Capacity Building

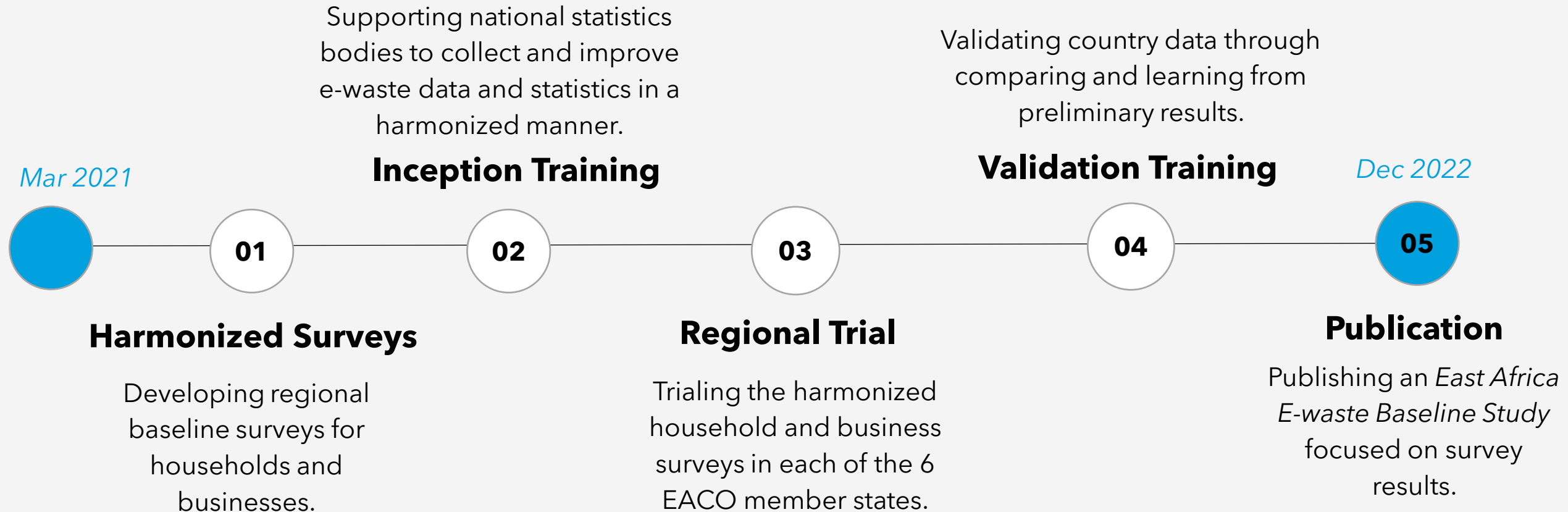
Building national and regional capacity to help countries produce reliable and comparable e-waste statistics.

Monitor E-waste Streams

Monitoring e-waste streams to inform the SDGs 11.6 and 12.5 and track the ITU Connect 2020 target 3.2.

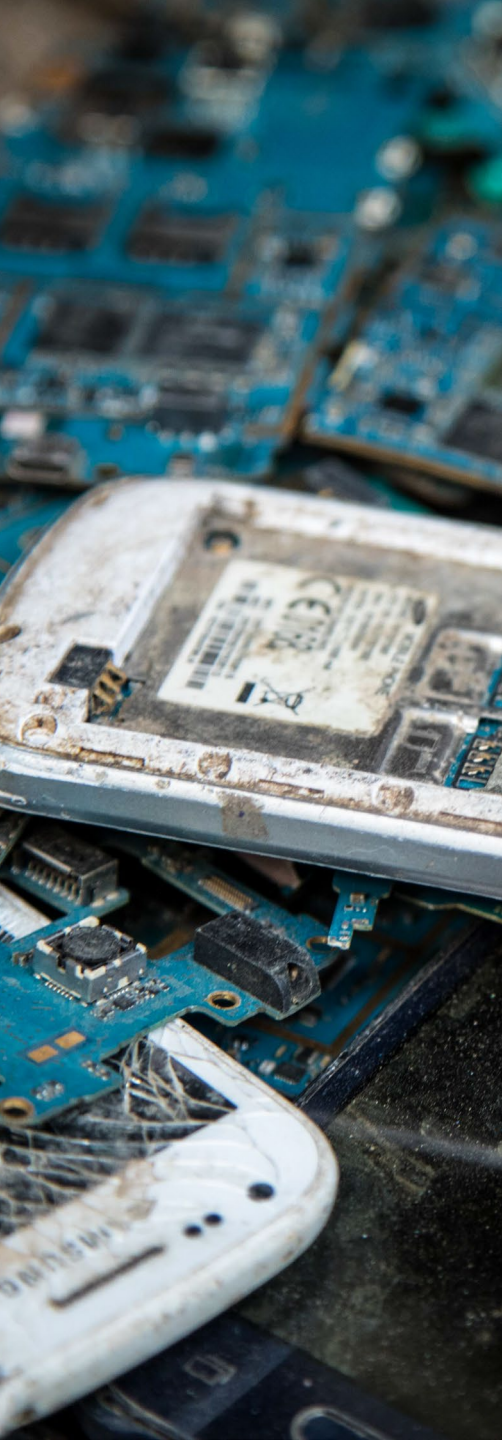


Project activities



Developing harmonized surveys

- Household and business surveys will aim to understand e-waste generation and disposal at the national and regional level.
- Questions focus on discard behavior, reasons to dispose and possession of Electronic and Electrical Equipment (EEE).
- Based on a subset of the UNU-KEYS where products are classified by similar function, comparable material composition and end-of-life attributes.
- Representative sample of households and businesses.
- Preparations for regional trial considering COVID-19 restrictions.



Thank you!

Contact:

Rosie McDonald
E-waste Data Associate
rosie.mcdonald@itu.int

