



“ITU Asia- Pacific Regional Workshop on ICT Indicators”

2-4 October 2019
Hanoi, Viet Nam

Myanmar's experience in ICT Data Collection

Country Report

by

Su Myat Myat Tun (Ms.)

**Posts and Telecommunications Department
Ministry of Transport and Communications**

Contents

- Brief about Myanmar
- ITU annual survey which PTD provides data to ITU
- Data Creation Process
- Difficulties and Challenges
- I hope from this workshop...

Brief about Myanmar



Geography

- ❖ Total land area - 676,577 square kilometer
- ❖ International borders - 5858 Kilometer with-
Bangladesh ,India ,China, Thailand and Laos
- ❖ total coastal line length - 2832kilometer
- ❖ north to south - 2090 kilometer
- ❖ east to west - 925 kilometer

Topography

- ❖ 50% of mountains and forests (northern and eastern)

Nay Pyi Taw,
Capital

Yangon
Largest City



Telecommunications Sector Reform

Policy Reform

Myanmar Telegraph Act 1885
Myanmar Wireless Telegraph
Act 1934



Telecommunications Law 2013

- Licensing Rules
- Interconnection Rules
- Competition Rules
- Numbering Rules
- Spectrum Rules

Telecommunication Service License

Chapter III of Telecommunication Law :

Anyone who is willing to provide telecommunications facilities and/or telecommunication services shall apply for permission and license

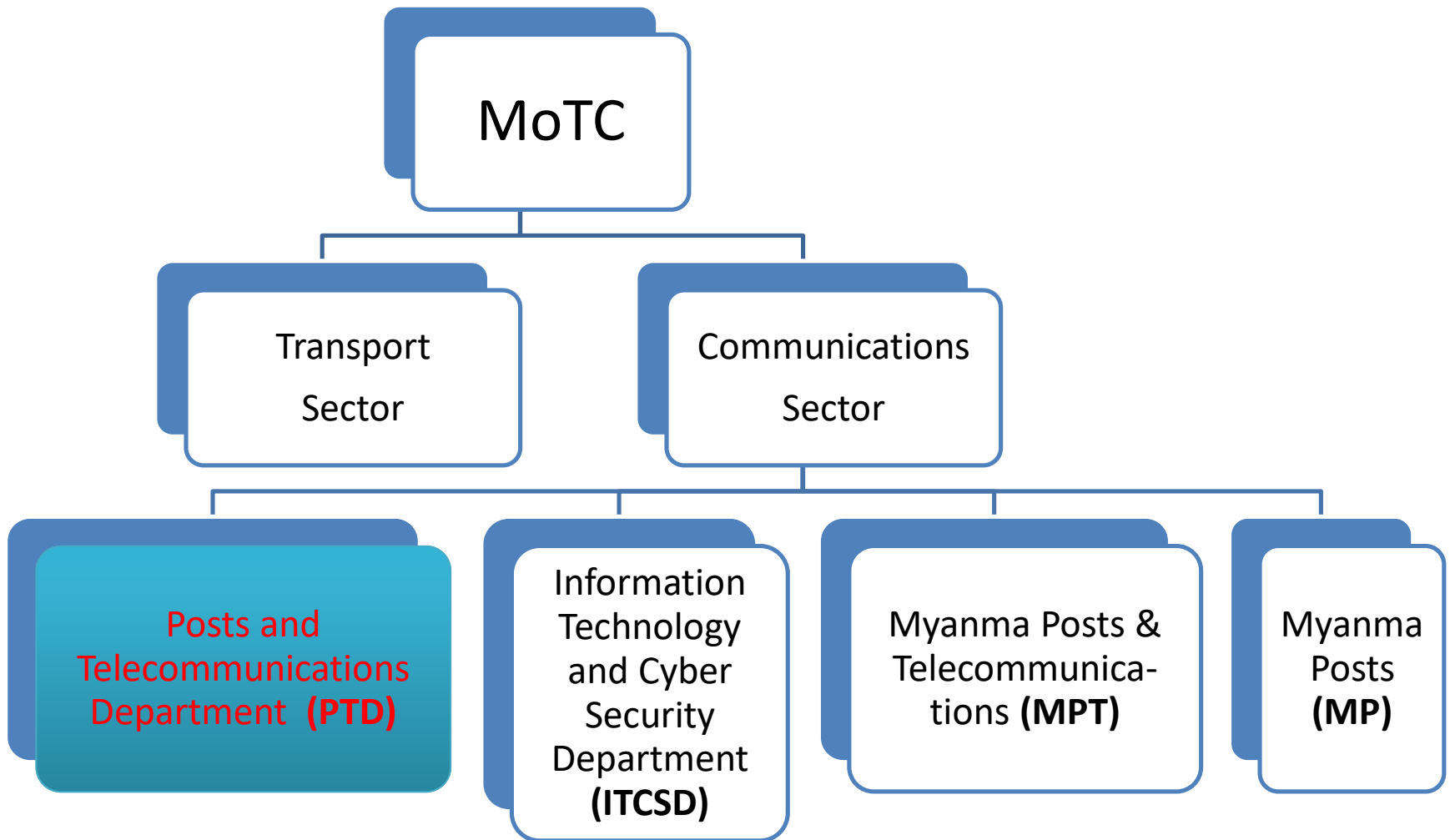
Key Objectives of Licensing Regime

- Promote competition and liberalization of the telecom sector in Myanmar
- Ensure transparency in market entrance
- Establish technology-and-service neutral approach to licensing
- Ensure non-discriminatory treatment of similarly situated licensees

Reforms Has Resulted In Significant Improvements ...

	Before Reform	August, 2019
MNO	- 1	- 4
Licensees	-	- 191
Number of Telephone		
Fixed	- 0.61 million	- 0.52 million
Mobile	- 6.09 million	- 67.99 million
Total	- 6.70 million	- 68.51million
Telephone density	- About 13%	- 129.05 %
Internet Users / Penetration	- Less than 2 million	- 42.42 million (78.25%)
National Fiber Backbone	- 7600 Km at 2013	- 69,392 Kilometer
International Submarine Cable	- SEA-ME-WE-3,	- SEA-ME-WE-3 - SEA-ME-WE-5 - AAE1
Cross-border Fiber	- China - Thailand	- China - Thailand - India - Laos
International Bandwidth	- 30 Gbps	- 626.30 Gbps
International Gateway	- 1	- 14
Smartphone penetration		- > 80%
Coverage (Population/ Geographic)		- 94.18% (Pop) / 64.24% (Geo)

Ministry of Transport and Communications (MoTC)



ITU annual survey which PTD provides data to ITU

No.	Title
1	ITU Regulatory Survey
2	ITU World Telecommunication Indicators Short Questionnaire – 17 Indicators
3	ITU World Telecommunication Indicators Long Questionnaire – 66 Indicators
4	Global Cybersecurity Index (GCI) Questionnaire
5	ICT Price Basket Questionnaire
5	Questionnaire on Tariff Policy

Data Creation process

Collect

from Operators, Licensees and concerned depts (by ITU questionnaire)

Validate

the data collected from each data providers

Compile and Consolidate

to get the final data, and report to ITU

Difficulties and Challenges

- Comprehensive understanding on ITU definitions
- Skillful Team for ICT Statistics
- Capacity Building
- Verifying the data collected from Operators and Licensees
- Cooperation / Coordination
- Household ICT data collection

I hope from this workshop...

- To learn international practices of ICT indicator collection and share knowledge with all of the participants.
- To figure out the solution for difficulties and challenges
- To utilize and share the knowledge gained from this workshop in national ICT indicator collection to produce high-quality official statistics

Thank you