

# ICT Development Index (IDI)



MEASURING THE INFORMATION SOCIETY

# MIS2013

# ICT Development Index (IDI)

The ICT Development Index (IDI) is a global benchmarking tool that ranks 157 economies according to their levels of ICT access, use and skills. It highlights top performers and those countries that have made the greatest progress between 2011 and 2012. The IDI is also used to track and monitor the digital divide.

# ICT trends

ICT developments are maturing in all parts of the world



**2.7**  
**BILLION**  
PEOPLE ONLINE



**750**  
**MILLION**  
HOUSEHOLDS CONNECTED

**6.8** **BILLION**  
MOBILE-CELLULAR SUBSCRIPTIONS

**2**  
**BILLION**  
MOBILE-BROADBAND SUBSCRIPTIONS



**50%** OF WORLD POPULATION LIVES WITHIN REACH OF A



# IDI top ten

Economies with the highest  
2012 IDI value

1

**REPUBLIC  
OF KOREA** IDI VALUE  
8.57  
IDI RANK  
#1

NEW TO THE  
TOP 10

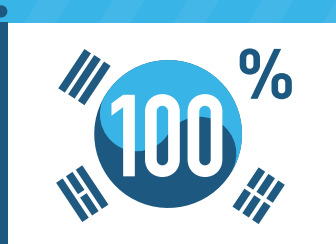
UK #8

2012

UK #11

2011

UP 3 PLACES



MOBILE-  
BROADBAND  
PENETRATION

ALSO IN THE  
TOP TEN...



AND OVER 97% OF HOUSEHOLDS CONNECTED

6 OF THE  
TOP 10  
ARE FROM  
NORTHERN EUROPE



2012 RANK	2011 RANK
2	SWEDEN IDI 8.45 RANK 2
3	ICELAND IDI 8.36 RANK 4
4	DENMARK IDI 8.35 RANK 3
5	FINLAND IDI 8.24 RANK 5
6	NORWAY IDI 8.13 RANK 6
7	NETHERLANDS IDI 8.00 RANK 7
8	UK IDI 7.98 RANK 11
9	LUXEMBOURG IDI 7.93 RANK 9
10	HONG KONG (CHINA) IDI 7.92 RANK 10

TOP 30 IDI ECONOMIES SHARE A  
HIGH LEVEL OF INCOME AND SKILLS

COUNTRIES FROM  
ASIA & PACIFIC,  
2012 RANK:

AUSTRALIA 11, JAPAN 12,  
MACAO (CHINA) 14, SINGAPORE 15,  
NEW ZEALAND 16

COUNTRIES FROM  
THE AMERICAS,  
2012 RANK:

USA 17,  
CANADA 20,  
BARBADOS 29

# IDI dynamic countries

Economies with the greatest 2011-2012 IDI rank/value increase

**ESTONIA**



HOUSEHOLDS WITH COMPUTER AND INTERNET ACCESS AT HOME

**LEBANON**

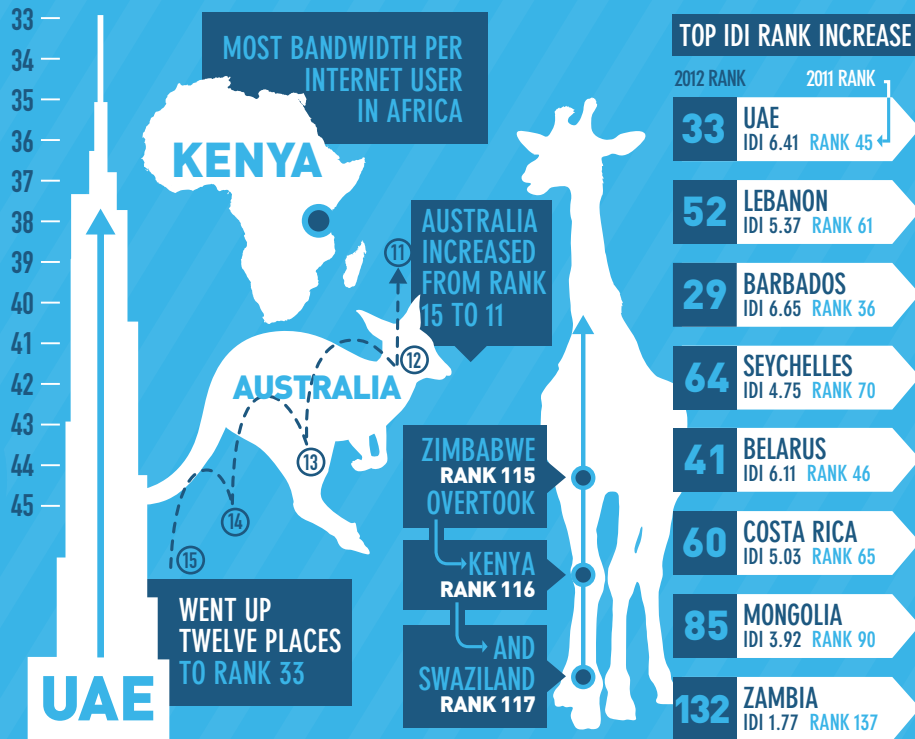


FIXED (WIRED)-BROADBAND PENETRATION

**ALBANIA**



WIRELESS-BROADBAND PENETRATION



**ECONOMIES THAT HAVE MADE THE MOST PROGRESS**  
(2011-2012 IDI VALUE INCREASE)

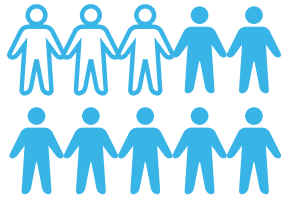
LEBANON 4.62 ↗ 5.37 UAE 5.68 ↗ 6.41 BARBADOS 6.01 ↗ 6.65 OMAN 4.80 ↗ 5.36  
COSTA RICA 4.47 ↗ 5.03 BELARUS 5.57 ↗ 6.11 ESTONIA 6.74 ↗ 7.28 SAUDI ARABIA 5.79 ↗ 6.30  
ISRAEL 6.70 ↗ 7.11 BRAZIL 4.59 ↗ 5.00

# least connected countries (LCCs)

Economies with  
the lowest IDI values

THE 39 LCCs REPRESENT  
A TOTAL POPULATION OF

**2.4**  
BILLION



WHICH IS MORE THAN A THIRD OF  
THE TOTAL WORLD POPULATION

LCCs COULD DRAW THE GREATEST BENEFITS  
FROM BETTER ACCESS TO AND USE OF ICTs,  
INCLUDING IN AREAS SUCH AS:



HEALTH



EDUCATION



EMPLOYMENT

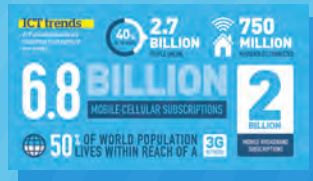


IN CAMEROON, DJIBOUTI, PAKISTAN,  
RWANDA AND TOGO LESS THAN ONE  
IN TEN PEOPLE USE THE INTERNET

SELECTED LCCs

2012 RANK	2011 RANK
119	SUDAN IDI 2.33 RANK 118
121	INDIA IDI 2.21 RANK 120
122	NIGERIA IDI 2.18 RANK 123
129	PAKISTAN IDI 1.83 RANK 128
131	DJIBOUTI IDI 1.77 RANK 131
135	BANGLADESH IDI 1.73 RANK 139
136	CAMEROON IDI 1.72 RANK 136
141	RWANDA IDI 1.66 RANK 143
148	MOZAMBIQUE IDI 1.31 RANK 149
153	ERITREA IDI 1.20 RANK 153
157	NIGER IDI 0.99 RANK 157

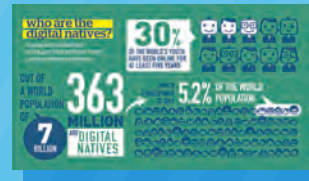
## MIS 2013 REPORT INFOGRAPHICS:



ICT DEVELOPMENT INDEX (IDI)



MEASURING THE COST AND AFFORDABILITY OF BROADBAND



MEASURING THE WORLD'S DIGITAL NATIVES



DIGITAL TV BROADCASTING TRENDS

ITU: The source for global ICT statistics



[www.itu.int/go/mis2013](http://www.itu.int/go/mis2013)