

EBU

OPERATING EUROVISION AND EURORADIO

Experience of European Public Service Broadcasters during the Covid-19 crisis

WALID SAMI (EBU)



Spike protein

M-Protein

Hemagglutinin dimer (H)

Envelope

RNA and other proteins

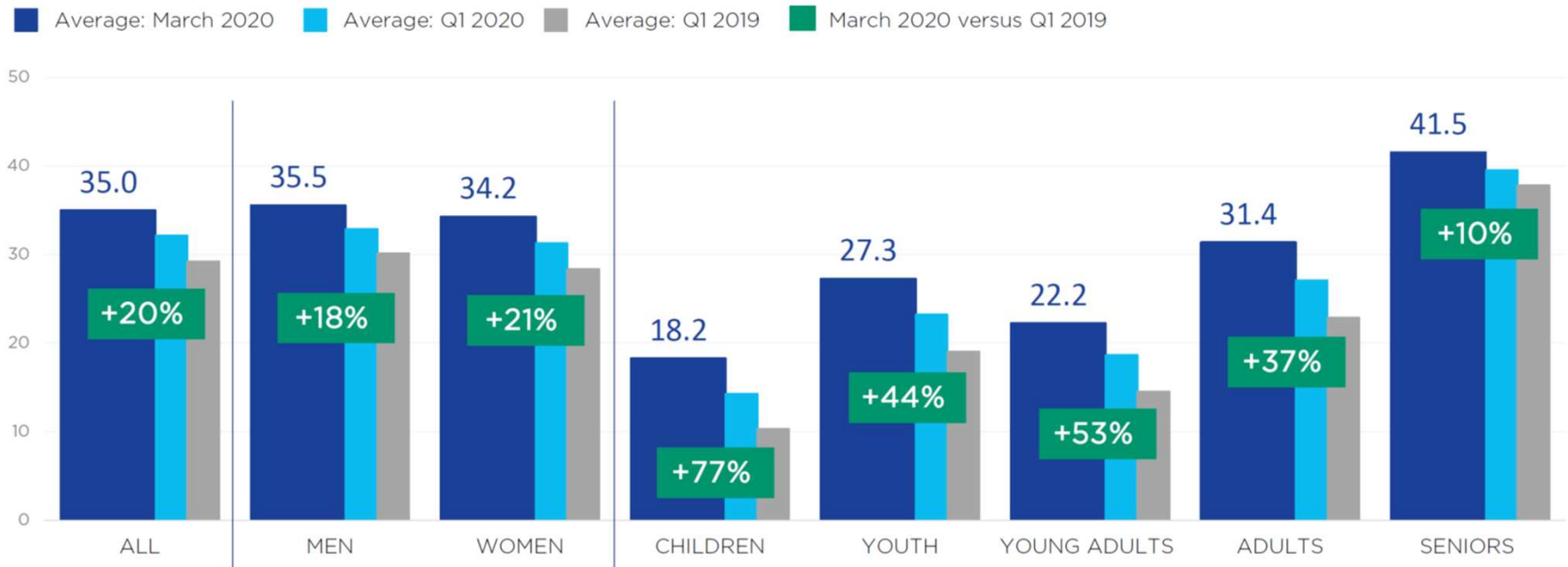
E-Protein

Content

1. Covid-19 Crisis PSM Audience Performance
2. EBU and EBU members response to Covid-19
3. Challenges to PSM from the Covid-19 Crisis

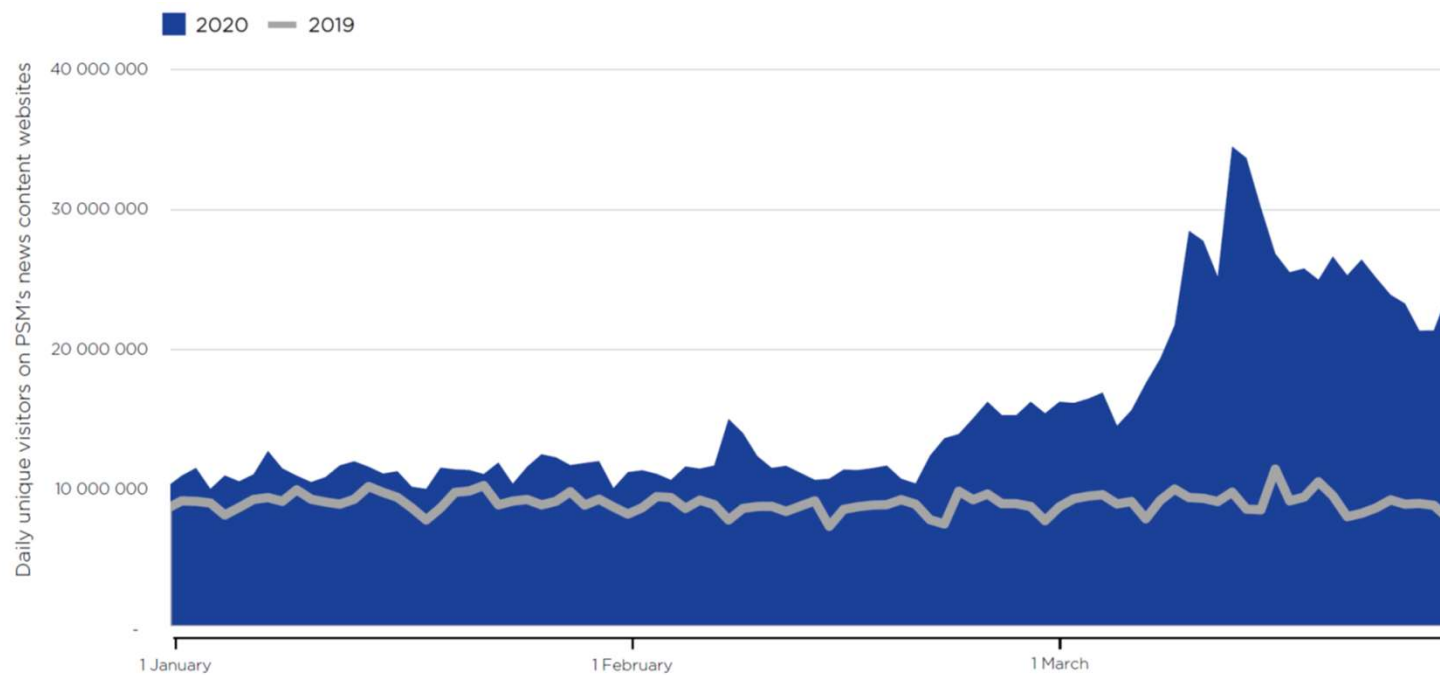
PSM EVENING NEWS GROWS ACROSS ALL DEMOGRAPHICS

Average daily Viewing Share (%) of PSM Evening News by target groups



Age definitions: Children 4-14, Youth 15-24, Young Adults 25-34, Adults 35-59, Seniors 60+. Definitions may vary slightly by country.

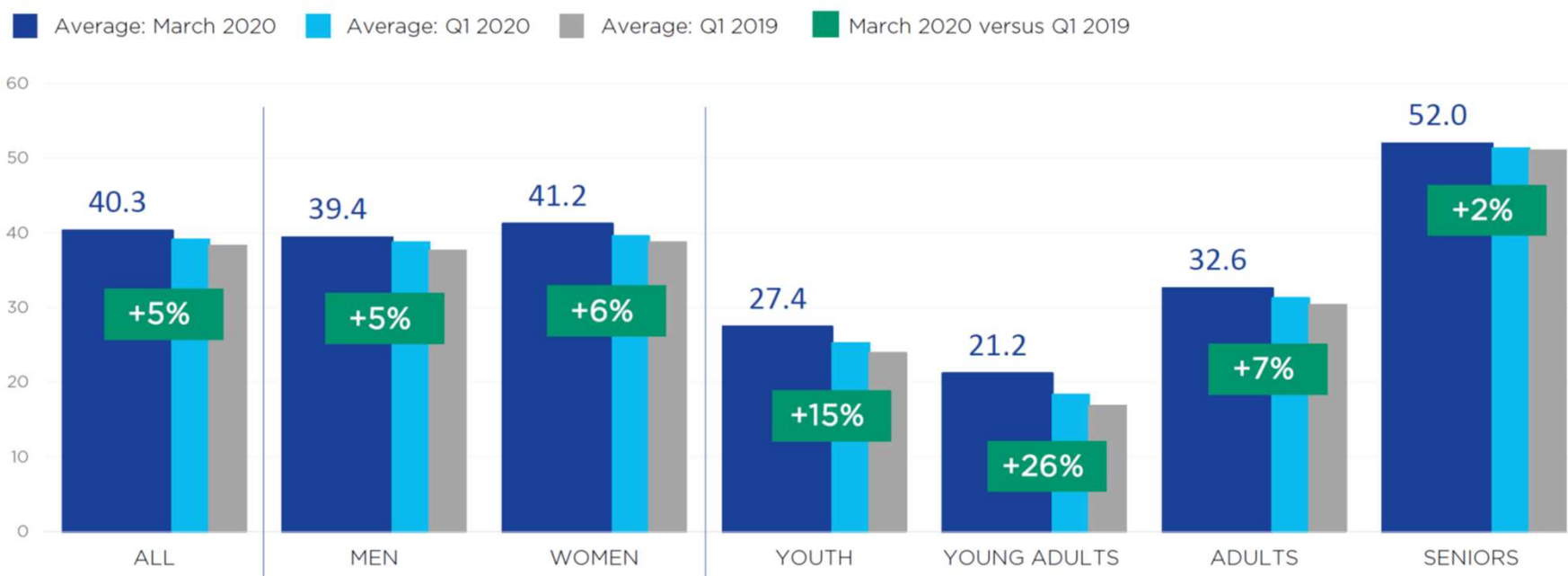
PSM ONLINE NEWS' REACH PEAKED MID-MARCH



Source: EBU based on Members' data - data for PSM's news content websites - excluding BBC (UK), ZDF (Germany) and Yle (Finland). For Rai (Italy) and ERR (Estonia) unique visitors include apps, For RTVS (Slovakia) and SR (Sweden) all the website's content is included. Franceinfo data is included in Radio France (RF / FI)

PSM RADIO GROWTH ACROSS YOUNGER DEMOGRAPHICS

Average daily Listening Share (%) of PSM Radio by target groups



Age definitions: Children 4-14, Youth 15-24, Young Adults 25-34, Adults 35-59, Seniors 60+. Definitions may vary slightly by country.

EBU and EBU members response to Covid-19

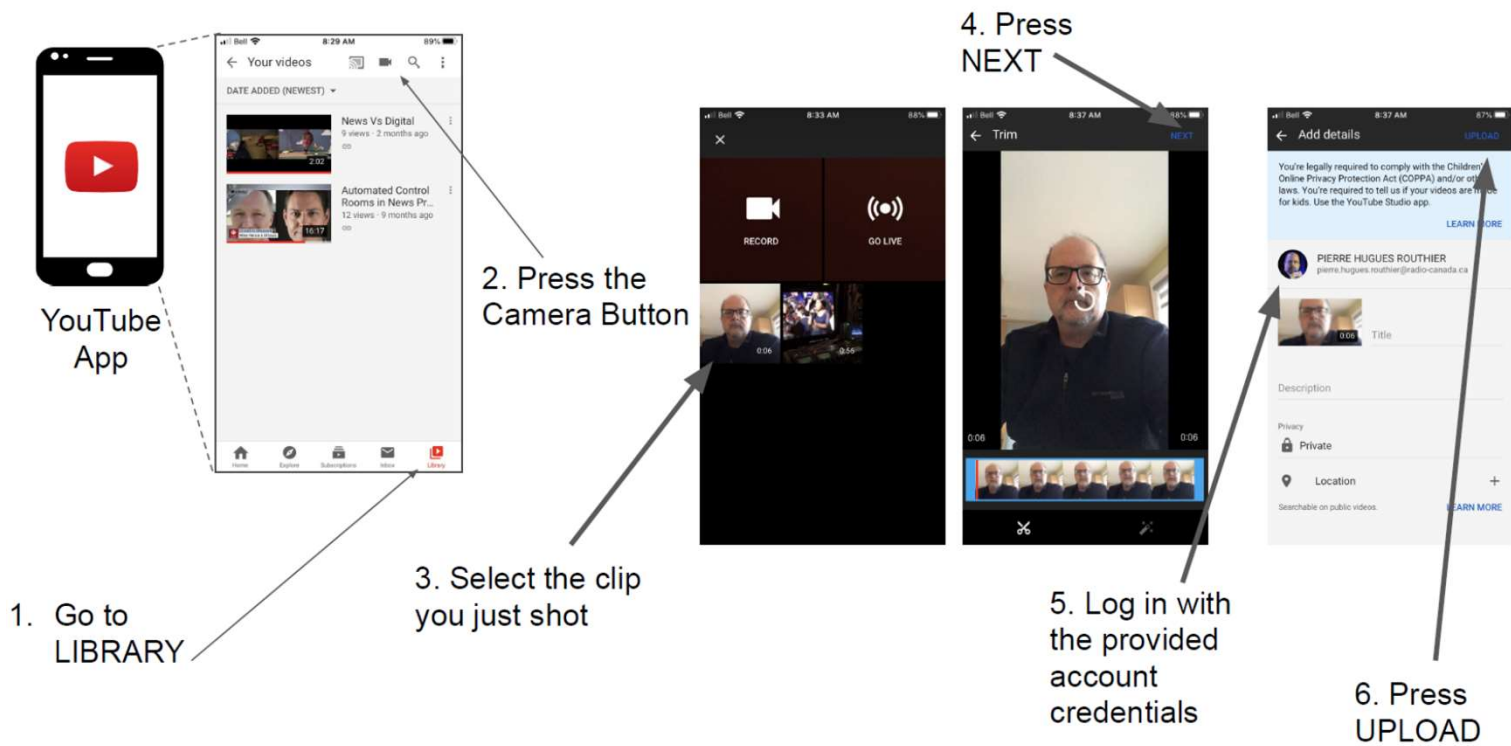
The EBU organized a series of online roundtables during lockdown for the members to share individual experiences in:

1. Remote journalism
2. Disinfecting equipment
3. Open Archives
4. Radio production
5. Distribution
6. Resuming TV production

The logo for the European Broadcasting Union (EBU), consisting of the letters 'EBU' in a bold, blue, sans-serif font.

Remote journalism

Remote Interviews - Guerilla mode



ARCHIVES IN THE CRISIS

- › Lack of production capabilities and live events,
- › Content archives to complete programme offers related mainly to
- › Information, Culture/Education, and Entertainment
- › A prerequisite for the usage has been, as always, proper rights clearance.

Radio Production during the crisis (examples)



Rai Remote production

Laptop for editing

Prodys Quantum W Operating on domestic ADSL for live voice

Apple pie for personal relief !!

NPO Radio 2's

EERSTE ONLINE FESTIVAL

18:00	Marlijn Weerdenburg	
18:30		Steffen Morrison
19:00	Danny Vera	
19:30		Darlyn
20:00	Ed Struijlaart	
20:30		Elske DeWall
21:00	Tim Akkerman	
21:30		3JS
22:00	Ilse DeLange	
22:30		Voltage
23:00	Judy Blank + Pablo Van de Poell(DeWolff)	
23:30		Ongekend Talent

Distribution of PSM content during the crisis

- › EBU issued [Recommendation R 149](#) “Strategy for adapting streaming quality during Time of crises” to avoid broadband network congestion
- › Broadcast has no congestion issue, therefore best for linear
 - › However, the crisis affected planned changes to the broadcast infrastructure (e.g. release of the 700 MHz band)
- › Technically, broadband networks have been highly reliable
 - › However, with increased broadband traffic comes increased CDN cost

Challenges to PSM from the Crisis

- › Disrupted Production (Drama, Sport, ...)
- › Financial impact
- › Affected PSM funding

For more information on EBU

- › Corporate: www.ebu.ch
- › Media Intelligence Service (MIS): <https://www.ebu.ch/media-intelligence>
- › Technology & Innovation (T&I): <https://tech.ebu.ch/home>

- › Events:
 - › All events: <https://www.ebu.ch/events?tab=upcoming-events>
 - › T&I: <https://tech.ebu.ch/events>





MANY THANKS

Walid SAMI : sami@ebu.ch