



Workshop for Caribbean to promote the development and implementation of Conformity Assessment programmes

St. Augustine, Trinidad and Tobago, 2-4 December 2014

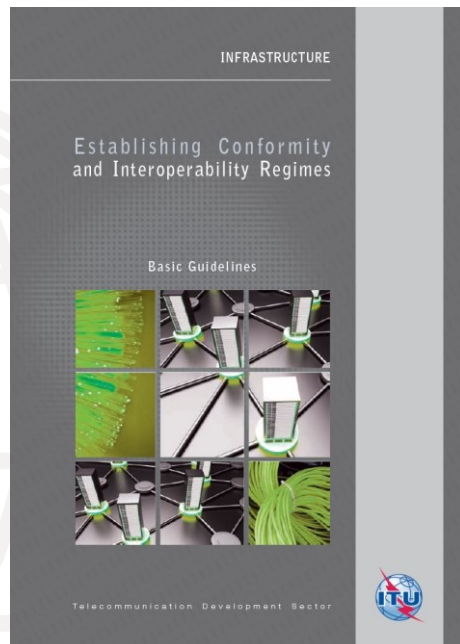
ITU Guidelines for establishing a C&I Regime

Vladimir Daigele

Technologies and Network Development
ITU-BDT, vladimir.daigele@itu.int

Establishing Conformity and Interoperability Regimes

Basic Guidelines



Guidelines [here](#)

2

C&I Guidelines

Guidelines for establishing Conformity and Interoperability Regimes for Developing Countries (2014)



Typical procedures used worldwide are going to be addressed. Any country may use as guidelines and tailoring/adapting such procedures to the existing national regulation and rules:

- A. Query for new products to be homologated (accepted)
- B. Import procedures for testing proposals
- C. Reference Standards for conformance testing
- D. Issuing and validating the Type Approval Certificate
- E. Homologation (acceptance)
- F. Suspension and Withdrawal of the Homologation Certificate
- G. Performing the Tests and Test Reports acceptance
- H. Conformance Assessment Management System
- I. Monitoring, Enforcement, Counterfeit, Sanctions and Post-Market Surveillance

3

Content



1. Introduction
2. Definitions
3. Development and review of regulatory framework and roadmap for the establishment of C&I regimes
4. Definition and publication of ICT reference standards
5. Accreditation, recognition and acceptance of laboratories and qualified professional

4

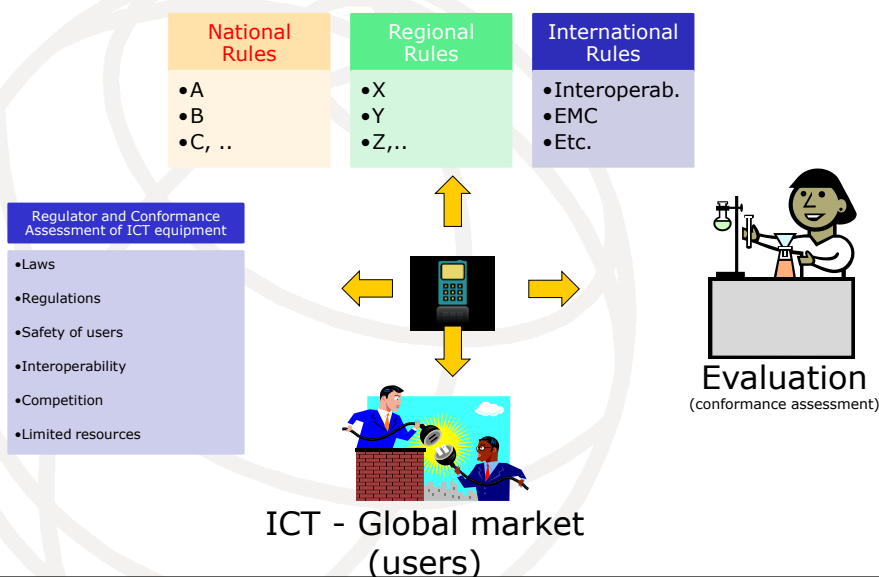
Conformity: different perspectives



- Service providers and operators specify standards and specifications for equipment and systems which they employ to provide services to their customers
- National regulators mandate regulations, standards and specifications for equipment and systems which are deployed and used in their territories
- Users of the equipment and systems along with the service providers and national regulators require evidence and proof that the equipment and systems conform to the appropriate standards and specifications and to the extent that they interoperate with each other as specified
- The process used to obtain the evidence and proof is called conformity assessment – the demonstration that specified requirements relating to a product, process, system, person or body are fulfilled

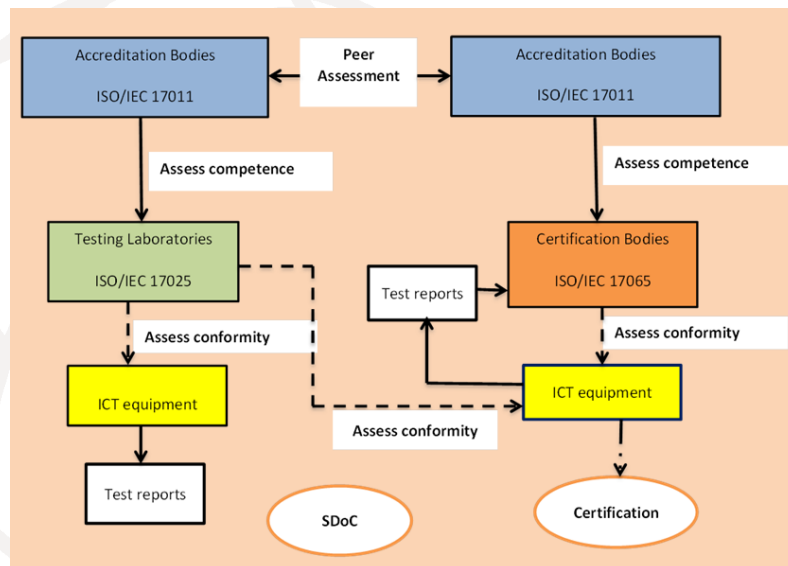
5

Conformance of ICT equipment and systems to standards and homologation process



6

Conformity Assessment Regimes



7

ITU/IEC 17000 Series: Conformity Assessment



- 17000:2004– Vocabulary and general principles
- 17001:2005– Impartiality – Principles and requirements
- 17002:2004– Confidentiality – Principles and requirements
- 17003:2004– Complaints and appeals – Principles and requirements
- 17004:2005– Disclosure of Information – Principles and requirements
- 17005:2008– Use of Management systems – Principles and requirements
- 17007:2009– Guidelines for drafting normative documents suitable for use for conformity assessment
- 17011:2004– Requirements for accreditation bodies accrediting conformity assessment bodies
- 17020:2012– Requirements for the operation of various types of bodies performing inspection
- 17021:2011– Requirements for bodies providing audit and certification of management systems
- 17024:2012– General requirements for bodies operating certification of persons
- 17025:2005– General requirements for the competence of testing and calibration laboratories
- 17030:2003– General requirements for third-party marks of conformity
- 17040:2005– General requirements for peer assessment of conformity assessment bodies and accreditation bodies
- 17043:2005– General requirements for proficiency testing
- 17050-1:2007– Supplier's declaration of conformity – Part 1: General requirements
- 17050-2:2007– Supplier's declaration of conformity – Part 2: Supporting document
- 17065:2012– Requirements for bodies certifying products, processes and services
- 17067:2013– Fundamentals of product certification and guidelines for product certification schemes

8

Regulatory framework and roadmap for the establishment of conformity and interoperability regimes



- **A telecommunication act reflects the policy of the sovereign state in question and can include a clear statement of the underlying policy. This statement would cover such elements as:**
 - reliable and affordable telecommunication services of high quality;
 - highlighted role of telecommunications to enhance efficiency and competitiveness;
 - efficient and effective regulation where required;
 - responsiveness to the economic and social requirements of users of telecommunication services;
 - international telecommunication services and licenses;
- **Telecommunication apparatus and administration:**
 - application to apparatus subject to regulation;
 - government powers and exercise of powers;
 - certification and marking;
 - appeals and evidence;
 - regulations including fees and mandatory requirements.
- **Investigation and enforcement:**
 - administrative and monetary penalties;
 - inspection and market surveillance;
 - civil liability

9

Conformance Assessment Procedures



Procedures for establishing a conformance assessment regime may include the following procedures:

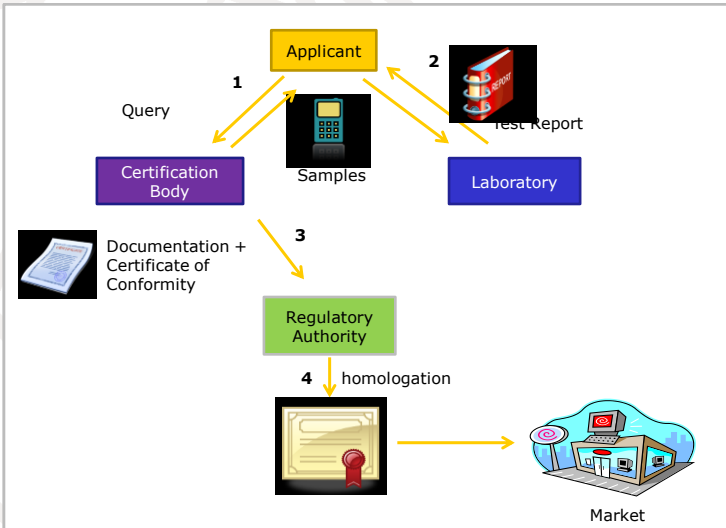
- A. **Query for new products to be homologated**
- B. **Import procedures for testing proposals**
- C. **Reference Standards for conformity assessment**
- D. **Test, Recognized Laboratories, and Test Reports**
- E. **Issuing and/or validating a Certificate of Conformity**
- F. **Issue of the Homologation (or acceptance)**
- G. **Suspension and Withdrawal of the Homologation Certificate**
- H. **Monitoring, Enforcement, and Sanctions and Post-Market Surveillance**

10

Regulatory Aspects Conformance assessment procedures



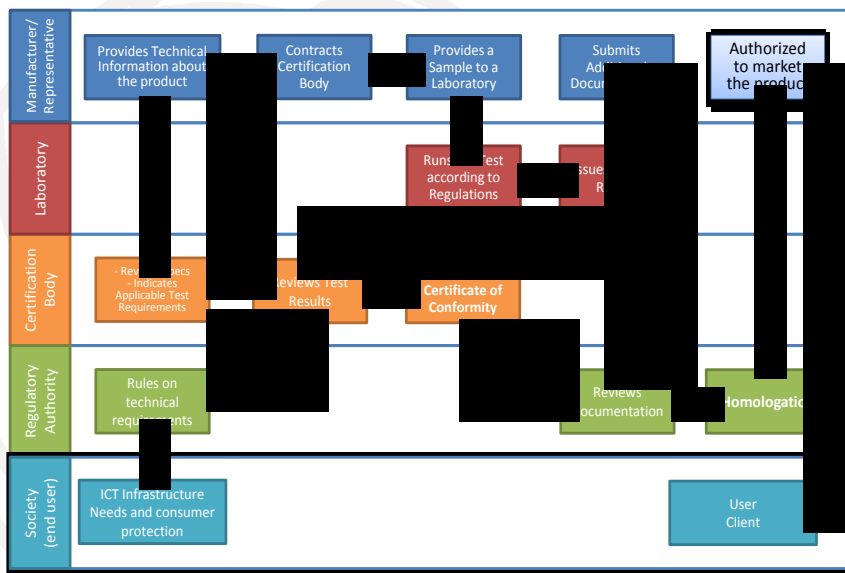
Example of interactions that may exist among the entities participating in a conformity assessment process that uses certification mechanism:



Procedures for Establishing Conformity Assessment Regimes (cont.)



Another example of interactions that may exist among the entities participating in the conformity assessment process



Conformance Assessment Procedures



■ Fees

- **Assessment and reassessment fee**
- **Technical expertise fee**
- **Listing fees**
- **Registration fees**
- **Payment of fees**

13

Definition and publication of ICT reference standards for conformity assessment of ICT equipment



- Sub-category of equipment has specific mandatory technical specifications as part of the regulatory requirements which must be met in order to be deployed in the marketplace
- These standards are developed primarily in accordance with decisions made and ratified in the International Telecommunication Union (ITU), International Organization for Standardization (ISO) and International Electrotechnical Commission (IEC) combined with regional, national and industry standards requirements and are therefore a complex and very complete set of requirements which are vitally important to an interference free and safe environment for ICT products



14

Definition and publication of ICT reference standards for conformity assessment of ICT equipment



- A number of regional standards bodies serving specific regional policies, regulations and requirements are heavily engaged in development and promulgation of the product standards and include the European Telecommunications Standards Institute, USA Telecommunications Industry Association, and various important forums and consortia such as 3GPP



15

Definition and publication of ICT reference standards for conformity assessment of ICT equipment



The next table gives and example examples of international standards, regional standards and forum and consortia standards used by some countries.

16

Category	Product	Standard	Technical Requirement
User equipment	Mobile	3GPP	Power; frequency stability, frequency in-band emission.
	Teléfono fijo	CEI	Power; frequency stability, frequency in-band emission.
	PABX	• Rec. UIT-T G.711. • Rec. UIT-T Q.921.	Protocols
	Charge and power adapter	Rec. UIT-T L.1000	Power, energy efficiency, eco-environment specifications
	Personal area communication	Atribución de frecuencias nacionales	Gain, transmission power, bandwidth, frequency stability.
	Residential optical unit	UIT-T G.984	Power; frequency stability, frequency in-band emission, SAR limits.
	UTP cable	ISO/CEI 11801	Return Loss, FEXT, NEXT, bandwidth
RTTE	Mobile - Broadband base station	ETSI	Gain, transmission power, bandwidth.
	Antenna	ETSI	Radiation Diagram, Gain, VSWR.
	Broadcast transmitter	ETSI	Gain, transmission power, frequency width.
	Earth station equipment / VSAT	ETSI	Gain, transmission power, bandwidth
Network equipment	Transmission equipment	Rec. UIT-T G.707	Protocols
	Network switches and routers.	MPLS - G.8121 Ethernet - G.8021 TVIP - H.62X	Protocols
	Cables	ISO/CEI 11801	Return Loss, FEXT, NEXT, bandwidth
	IPVT	Rec. UIT-T	See Standard
Electromagnetic Compatibility	All equipment	Rec. UIT-T K.48	Radiated spurious emission, conducted spurious emission, resistibility
Safety	All equipment	Rec. UIT-T K.21	Electrical shock protection, fire protection, overcurrent protection

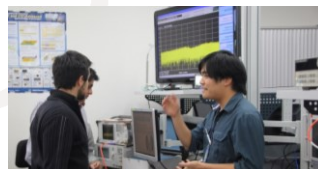
Definition and publication of ICT reference standards for conformity assessment of ICT equipment



Terminal equipment: Technical specifications/standards list

In some countries the standard provides technical requirements for:

- connection of terminal equipment to public networks
- hearing aid compatibility with handsets.
- compliance specifications for terminal equipment, terminal systems and network protection devices



Definition and publication of ICT reference standards for conformity assessment of ICT equipment



Specific absorption rate (SAR)

Specialized measurement systems have been developed to permit determination of the SAR value of a given product or system in order to assess compliance with the definitions of limits set by different SDOs (e.g. IRCNIRP)



19

List of ICT equipment requiring conformity assessment



■ Examples:

Types of Equipments

Radio apparatus: A device or combination of devices intended for, or capable of being used for, radiocommunication

Interference-causing equipment: Any device, machinery or equipment, other than radio apparatus, that can cause interference to radiocommunication

Radio-sensitive equipment: Any device, machinery or equipment, other than radio apparatus, that can be adversely affected by radiocommunication emissions

Equipment that must meet technical standards

- Broadcasting transmitters
- Portable radio transmitters
- Digital scanner receivers
- Remote car alarms and starters
- Garage door openers
- Wireless computer links
- Cellular phones
- Cordless phones
- Fax machines
- GSM telephones
- Mobile radios
- Modems
- Wireless remote devices
- PABXs (including small business systems and key systems)
- Pagers
- Radio receivers
- Radio transmitters
- Telephone instruments
- Telex equipment
- Other equipment emitting a radio signal
- Any customer premises equipment to be attached to any part of a licensed telecommunication network

20

Definition and publication of ICT reference standards for conformity assessment of ICT equipment



Other References:

- Table of ITU-T Recommendations and relevant parameters to be tested: <http://www.itu.int/md/T13-SG11-131107-TD-GEN-0300/en>
- ITU-R Recommendations ([link](#))
- USA: FCC Testing ([link](#))
- European Commission: Harmonised standards under Directive for R&TTE: http://ec.europa.eu/enterprise/sectors/rtte/documents/standards/index_en.htm
- Canada: Technical Requirements for Radio Systems: <http://www.ic.gc.ca/eic/site/icgc.nsf/eng/06957.html#q=srsp>;
- UAE: Technical Standards: http://www.tra.gov.ae/type_approval.php
- Brazil: Technical requirements for user's terminals: www.anatel.gov.br
- Mauritius: ICT Authority is the national regulator for the ICT sector and Postal Services: http://www.icta.mu/telecommunications/std_list.htm

21

Accreditation, recognition and acceptance of laboratories and qualified professional



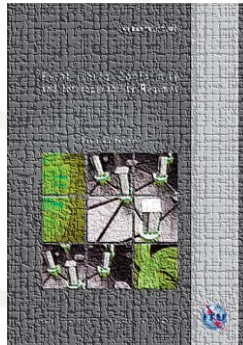
- **Designation/recognition of accreditation and certification bodies, and testing laboratories**
 - Appointment and peer assessment of accreditation bodies
 - Designation/recognition of certification bodies
 - Designation/recognition of testing laboratories
- **Recommendations on policies and strategies for developing conformity**
 - assessment testing laboratories compliant with international standards
 - Legal status/legal entity
 - Financial policy
 - Management structure
 - Personnel
 - Training system
 - Premises
 - Equipment
- **Recommendations on how to become accredited by international accreditation bodies (ILAC, IAF, APLAC, IECEE, etc.) in the relevant ICT scope**

22

In production... (2014)

Establishing Conformity and Interoperability Regimes

Complete Guidelines



Terms of Reference [here](#)

23

Revision of a Conformance Assessment Regime (Case study)



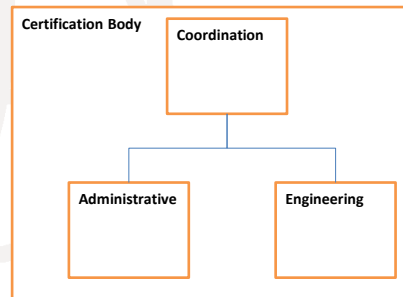
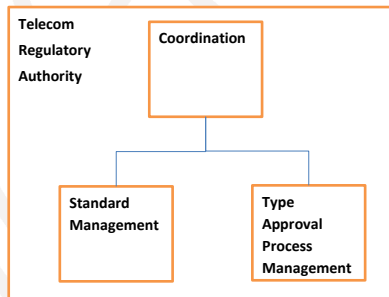
- Review of a Conformance Assessment Regimes.
Some necessities of improvement:
 - ✦ **Self-Declaration of Conformity acceptance;**
 - ✦ **Accountability of vendor's local representatives (manufacturer's representative);**
 - ✦ **Adapting existing equipment to new conformity assessment rules, standards, and procedures;**
 - ✦ **Revision of the Application Form to ensure, among other, product origin verification;**
 - ✦ **Renewal of certificates (procedures and fees);**
 - ✦ **Review of the fee structure.**

24

Revision of a Conformance Assessment Regime (Case study)



■ Type Approval Division and Certification Body Structures



25

Conformance Assessment Regime: Implementation Roadmap



Action	2014				2015			
	1Q	2Q	3Q	4Q	1Q	2Q	3Q	4Q
Standard Adoption								
EMC	x	x	x	x				
Safety	x	x	x	x				
SAR		x	x	x	x			
Digital TV	x							
Radio (emissions limits compliance check, spectrum regulation)	x							
Interoperability					x	x	x	x
Conformity Assessment Mechanisms								
Check-list for Type Approval	x	x	x	x	x	x	x	
Fee general formula	x							
Marking experience	x							
Direct Assistance								
Assistance from ITU			x					
Fee personalized formula		x	x					
Type Approval Res. review	x	x	x					
Training								
C&I procedures (Type, approval, Standards, etc.)			x					
C&I Domains (EMC, mobile, NGN, etc.)				x				
MRA			x					

26

Thank you!!



[C&I Portal](#)

Vladimir Daigele

Technologies and Network Development
ITU-BDT, vladimir.daigele@itu.int