



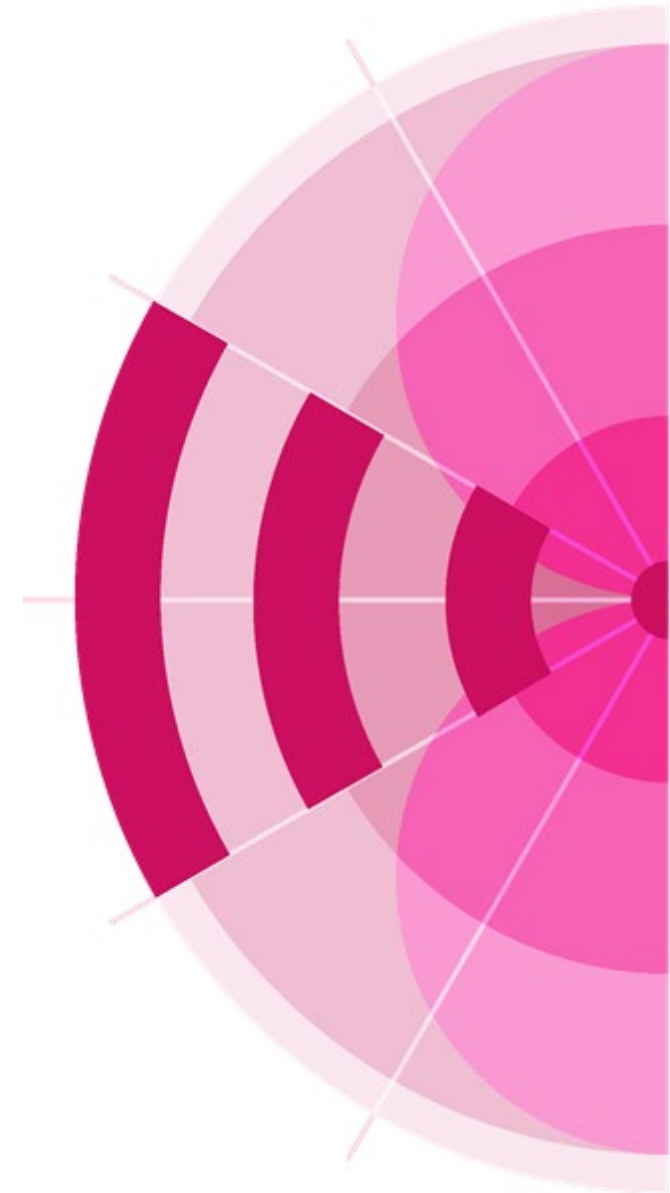
ITUWRS
ONLINE2020

29TH WORLD RADIOCOMMUNICATION SEMINAR
30 November - 11 December 2020

Maritime Publications and MARS

www.itu.int/go/wrs-20

#ITUWRS



Presentation

- **Introduction**
- **List of Coast Stations and Special Service Stations (List IV)**
- **List of Ship Stations and Maritime Mobile Service Identity Assignments (List V)**
- **Manual for Use by the Maritime Mobile and Maritime Mobile-Satellite Services (Maritime Manual)**
- **Maritime mobile Access and Retrieval System (MARS)**

Introduction

Maritime mobile communications and radio navigation are keys to the success of maritime trade, passenger vessels and nautical recreation activities, considering that they provide them with essential services such as:

- Maritime Safety Information - MSI (weather forecasts, navigational warnings, etc);
- Ship position reporting and routing;
- Information to assist Search and Rescue (SAR) authorities, when a vessel needs assistance, thus potentially avoiding the loss of life or property and protecting the environment;
- Safety/Security and General Communications via a wide range of communication technologies.



Introduction

Service Publications contain information published to support the application of the Radio Regulations (RR) as defined in its Article 20. **Maritime Service Publications** and **Maritime mobile Access and Retrieval System (MARS)** contribute to this, by providing users with maritime-related information.

- Publications:

List IV
List of Coast Stations and Special Service Stations (RR 20.7)



List V
List of Ship Stations and Maritime Mobile Service Identity Assignments (RR 20.8)



Maritime Manual
Manual for use by the Maritime Mobile and Maritime Mobile-Satellite Services (RR 20.14)



The carriage requirement of these publications, on board ships, is given in Appendix 16 to the RR

- Online information:

Maritime mobile Access and Retrieval System
(RR 20.14A)



Introduction

Who are the users:

Rescue Coordination Centres & Search and Rescue Units



Other Administration Agencies

- Port operations & Vessel Traffic Service (VTS);
- Offices in-charge of licensing & notification of ship, coast stations and other maritime stations;
- Border monitoring - customs, Fisheries monitoring, Inspection and control of shipping;
- Coast stations for commercial radio-traffic.

Maritime community

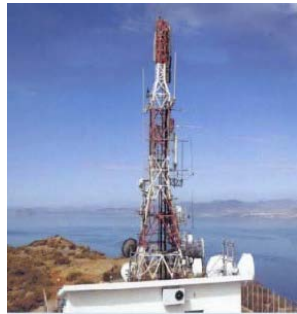
- Shipping companies and Agencies;
- Accounting Authorities (AAICs);
- Maritime Universities and training centres;
- Commercial port authorities;
- Fishermen and pleasure boat users.



Introduction

Statistics of information registered in the ITU maritime database

Contains details on more than **870 000** vessels;
Almost **660 000** stations are notified with an MMSI;
Around **40 000** stations notified with satellite communication terminal numbers;



More than **2 300** coast stations;

Around **100** SAR aircrafts stations.



More than **2 500** Automatic Identification System (AIS) Aids to Navigation stations (AtoNs);

Contact details of **624** accounting authorities;

List of Coast Stations and Special Service Stations (List IV)

This List is prepared and issued, once every two years, by the International Telecommunication Union (ITU), in accordance with provision No. 20.7 of the RR.



It provides information that is considered useful for:

- Ships at sea, to contact coast stations; and/or
- Authorities involved in SAR operations.

Updates notified by Administrations are made available via the MARS webpage on a daily basis. A compilation of updates, provided in pdf format, is also available every six months.

List of Coast Stations and Special Service Stations (List IV)

This publication contains useful operational information, such as, names of coast stations, MMSIs and/or Call Signs, geographical coordinates, contact information, transmitting and receiving frequencies, channel numbers and hours of service of coast stations providing one or several of the following services:

***DSC-WATCH** watch-keeping using digital selective calling; **MED-ADVICE** Stations transmitting medical advice; **RCC(s)** Rescue coordination centres (MRCC, RCC, MRSC, JRCC); **NAVINFO** transmitting navigational and meteorological warnings and urgent information (MSI); **METEO** Stations transmitting regular meteorological bulletins; **NOTICE-NAV** Stations transmitting notices to navigators ; **UTC** Stations transmitting radio time signals; **VTS** Vessel traffic services; **PILOT** stations; **CP** Coast stations providing a public correspondence service; **PORTINFO** Port stations; **CES** Coast earth stations; **CES-CP** Systems in the maritime mobile-satellite service that provide a public correspondence service; **NAVAREA** coordinators; **AIS** Automatic Identification System services; **SAR** Agency contact information.*

All the notified AIS Aids to Navigation (AtoNs) are also listed in this publication.

List of Coast Stations and Special Service Stations

List IV example

DSC watch service covered (H24) by Doha Radio station, QATAR

☰ | 🗑️ | 📄+ | 📌

- > 📁 POR Portugal
 - 📖 NOTES
- > 📁 PRU Peru
 - 📖 NOTES
- > 📁 PTC Pitcairn
 - 📖 NOTES
- > 📁 PTR Puerto Rico
 - 📖 NOTES
- ✓ 📁 QAT Qatar
 - 📖 DOHA RADIO
 - 📖 NOTES
- > 📁 REU Reunion

QAT - Qatar

DOHA RADIO

Admin./Geo.Area symbol: QAT	MMSI: 004661010	Services: DSC-WATCH, METEO, NOTICE-NAV, CP
---------------------------------------	------------------------	---------------------------------------------------

Services

DSC-WATCH - Watch-keeping using digital selective calling techniques

Address : Ooredoo Co.
P.O. Box 217
Doha
Qatar

E-addr.: PHONE : +974 44864444
TELEFAX : +974 44980360
TELEX : +497 5063 RADDH
EMAIL : a7d@ooredoo.qa

Num. Notes :
Remarks :
Sea Areas : A1, A2, A3

Call Sign	Sel Call	MMSI	Latitude	Longitude	Tx Freq.	Unit	Rx Freq.	Channel	Emission Class	Freq. Band	Tx Power	Watch Hours	Remote Name	Num. Note	Remarks
A7D			25°42'00"N	051°35'00"E	156.525	M	156.525	C70	G2B	VHF	0.05	H24			
A7D			25°42'00"N	051°35'00"E	2187.5	k	2187.5		F1B	MF	1	H24			
A7D			25°42'00"N	051°35'00"E	4207.5	k	4207.5		F1B	HF	5	H24			
A7D			25°42'00"N	051°35'00"E	8414.5	k	8414.5		F1B	HF	5	H24			

List of Ship Stations and Maritime Mobile Service Identity Assignments (List V)

This List is prepared and issued, ever year, by the International Telecommunication Union (ITU), in accordance with provision No. 20.8 of the RR.



It provides information that is considered useful to:

- Contact individual ships at sea;
- Assist maritime SAR authorities in organizing their operations in the event that a ship is in a distress situation;
- Assist national administrations in identifying and monitoring vessels operating in their national waters.

Updates notified by Administrations are made available via the MARS webpage on a daily basis. A compilation of updates, provided in pdf format, is also available every three months.

List of Ship Stations and Maritime Mobile Service Identity Assignments (List V)

The publication contains:

- Detailed operational information on the vessel, such as, ship name, identification/or call sign, flag state of the vessel, type of vessel, national or IMO registration number, gross tonnage, number of passengers and crew and radio communication equipment on board the ship, among others;
- Identification and maritime radio equipment on board aircraft involved in SAR activities (SAR aircraft);
- Contact information and particulars of accounting authorities, including the respective accounting authority identification code (AAIC);
- Contact information of administrations that have notified ship station data for registration in the ITU maritime database or companies acting on their behalf.



Owner's contact details are restricted to Administrations

List of Ship Stations and Maritime Mobile Service Identity Assignments (List V) example



Search ITU List of Ship Stations and Maritime Mobile Service Identity Assignments (List V)

Ship Stations Retrieval System

Enter full or partial search string:

MMSI: Ship Name: Call Sign: EPIRB: Country:

MMSI	Ship Name	Call Sign	EPIRB	Country
419001003	ABS ANOKHI	AWKS	E1G2	India

Note: Click any item above to display the particulars.

Retrieving Row: 1 (in 1 second) < Page 1 >

Particulars of Ship Station

Details of Ship Station

Print Fields help Previous Next Close

- MMSI:
- Call Sign:
- Ship Name:
- Selcal No.(s):
- Admin./Geo. Area: [Admin. details](#)
- Boats:
- EPIRBs:
- Ship Class:
- Ind. Class:
- Vessel Id. No.:
- Gross Tonnage:
- Person Capacity:
- RTG Band:
- RTF Band:
- AAIC: [AAIC details](#) AAIC SAT:
- Owner:

Inmarsat No.(s):

EPIRB Hex ID: EPIRB ID (MMSI or MID-Call sign):

Corresp.: Terr. Serv.:

Hours:

Ex Ship-Name: Ex Call Sign:

Radio Installation:

Copyright ITU 2020 All Rights Reserved

In this example, It is searched a ship station by its MMSI.

Manual for Use by the Maritime Mobile and Maritime Mobile-Satellite Services (Maritime Manual)

- This is a reference publication that has been designed to be of use by radio operators in the maritime mobile and maritime mobile-satellite services.
- The carriage requirement for this List on board ships (vessels), is given in Appendix 16 to the RR.
- It provides the maritime community with a compilation of treaty, regulatory, technical, operational and other ITU texts, relevant to the maritime mobile and maritime mobile-satellite services.
- It contains all pertinent extracts from the ITU Constitution and Convention, Radio Regulations, Telegraph and Telephone Regulations and associated ITU-T and ITU-R Recommendations, on the maritime mobile and maritime mobile satellite services.



Maritime mobile Access and Retrieval System (MARS)



MARS is a free of charge, online access and retrieval system (24-h/7-day basis) that allows users to consult the information currently registered in the ITU's maritime database system.

www.itu.int/itu-r/go/mars

This webpage provides operational information of ship and coast stations, MMSI assigned to AIS Aids to Navigation and SAR Aircraft, and contact information of accounting authorities and notifier agencies or companies, that have been notified to the ITU Radiocommunication Bureau by the Administrations of the ITU Member States.

Maritime mobile Access and Retrieval System (MARS)

The screenshot shows the ITU website's navigation bar with tabs for ITU, General Secretariat, Radiocommunication, Standardization, Development, ITU Telecom, Members' Zone, and Join ITU. Below the navigation bar, the page title is "Maritime mobile Access and Retrieval System (MARS)". The breadcrumb trail reads "YOU ARE HERE HOME > ITU-R > TERRESTRIAL SERVICES > MARS". The main content area is titled "Coast Stations" and includes a photograph of a coastal station. Below the text, there are two sections: "SHIP STATIONS" and "COAST STATIONS", each with a "Retrieval of information >" link. On the right side, there are "Quick links" for "General references" and "Maritime publications", a list of links including "Download ship stations, coast stations, and MMSI assigned to AtoN and SAR aircraft (Restricted Access)", "Radio Regulations (Edition 2020)", "Maritime Identification Digits (MID)", "International Call Sign Series", "Assignment and use of identities in the maritime mobile service (MMSI) (Recommendation ITU-R M.585)", "Accounting Authorities (Recommendation ITU-T D.90)", and "BR Maritime Circular Letters (CM Series)", and a "UNECE - UN/LOCODE" section with a "Code List by Country" link.

It is also provided in MARS:

- Updates to the Publications List IV and List V;
- Access for Administrations to download extracts for their registered stations.
- Latest notification date concerning ship and coast stations;
- Guidelines and forms for preparing and submitting notifications.

Maritime mobile Access and Retrieval System (MARS)



Search information

SHIP STATIONS  Retrieval of information > How to notify >	COAST STATIONS  Retrieval of information > How to notify >	SAR AIRCRAFT STATIONS  Retrieval of information > How to notify >	AIS AIDS TO NAVIGATION  Retrieval of information > How to notify >
--------------------------------------------------------------------------------------------------------------------------------------------------------------------------------------------------	----------------------------------------------------------------------------------------------------------------------------------------------------------------------------------------------------	------------------------------------------------------------------------------------------------------------------------------------------------------------------------------------------------------------	-------------------------------------------------------------------------------------------------------------------------------------------------------------------------------------------------------------

Users may access **coast, ship, SAR Aircraft and AtoNs stations** areas through:

- **Retrieval of information:** to query the ITU maritime database;
- **How to notify:** to download notification forms and consult guidelines.

Accounting authorities and **Notifier administrations** are the other main areas from where users may retrieve information.

ACCOUNTING AUTHORITIES  Retrieval of information > AAICs by country or geographical area > Addresses > More information >	ADMINISTRATION INFORMATION  Retrieval of information > Latest notification dates >
------------------------------------------------------------------------------------------------------------------------------------------------------------------------------------------------------------------------------------------------------------------------------------------------------------------	-------------------------------------------------------------------------------------------------------------------------------------------------------------------------------------------------------------------------------

Maritime mobile Access and Retrieval System (MARS)

Notifications

Users may access the “**How to notify**” links for a concerned station to download forms and consult guidelines on preparing and submitting notifications.

The image displays three ITU notification forms. The first form, 'NOTIFICATION FORM (SHIP STATIONS)', includes fields for ship name, MMSI, services (e.g., DSC-WATCH), and contact information. The second form, 'ANNEX 1 NOTIFICATION FORM MMSI assignments to SAR aircraft', includes fields for MMSI, aircraft type (FW, HC, UM, XX), and license holder information. The third form, 'ANNEX 1 NOTIFICATION FORM MMSI assignments to AIS Aids to Navigation (AtoN)', includes fields for AtoN name, position, dimension, and electronic position fixing device type. A legend for electronic position fixing devices is provided at the bottom right of the third form.

Type of electronic position fixing device	Value
1	Undefined
2	GPS
3	GLONASS
4	Combined GPS-GLONASS
5	Loran-C
6	Chayka
7	Integrated Navigaton System
8	Surveyed
9	Galileo

REMINDER

The information published in the List IV, List V and MARS, is based on notifications submitted by the Administrations of the ITU Member States.

Provision No. 20.16 of the RR states that:



Administrations shall take all appropriate measures to notify the Radiocommunication Bureau immediately of any changes in the operational information contained in List IV (Coast stations) and List V (Ship stations), in view of the importance of this information, particularly with regard to safety.

*In the case of the data published in **List V**, which is also made available online through MARS, administrations shall communicate those changes at least once a month.*

In the case of other publications, administrations shall communicate the changes in the information contained in them as soon as possible.

Thank you!

ITU – Radiocommunication Bureau
Questions to brmail@itu.int or mars@itu.int