



ITUWRS
ONLINE2020

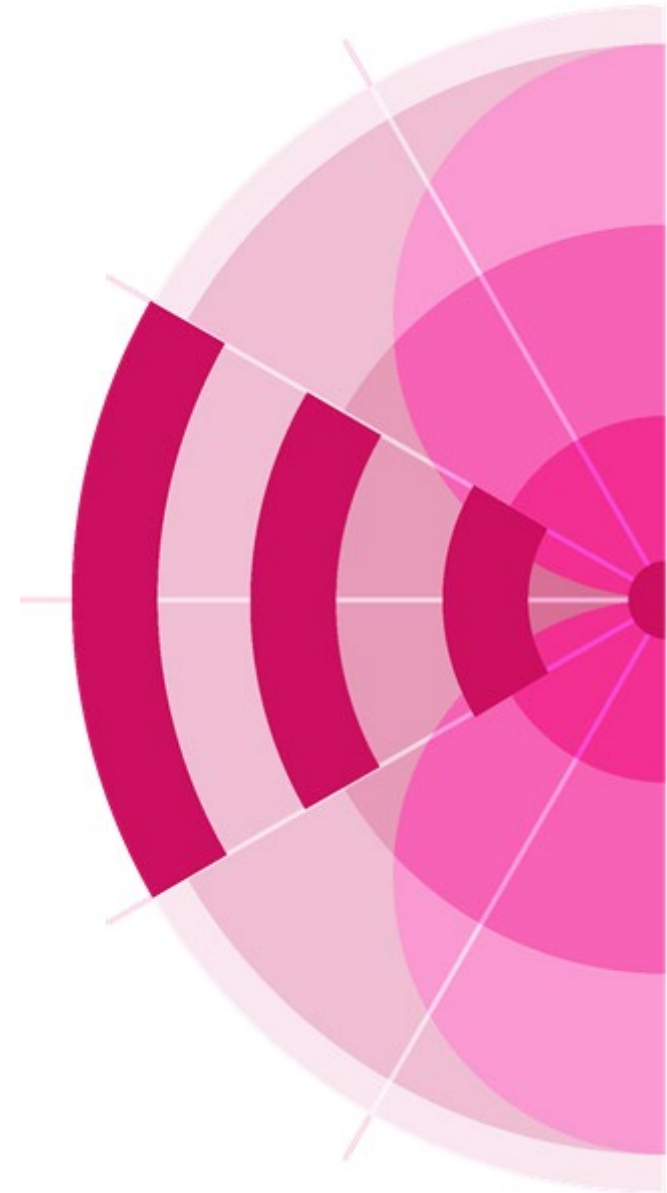
29TH WORLD RADIOCOMMUNICATION SEMINAR
30 November - 11 December 2020

Notification of frequency assignments for recording in the Master Register and Plans

Ms. Sujiva Pinnagoda
Terrestrial Services Department
Radiocommunication Bureau

www.itu.int/go/wrs-20

#ITUWRS



Overview

Master **I**nternational **F**requency **R**egister (MIFR)

- ✓ Database of frequency assignments that are already in operation;
- ✓ Why it is necessary to register;
- ✓ Type of frequency assignments that must be registered;
- ✓ When to register.

Terrestrial **P**lans – **R**egional or **W**orldwide

- ✓ Database of frequency assignments that are planned for administrations for their future use;
- ✓ Must notify to the Master Register when put into operation.

Notification

International Recognition No. 8.3

In accordance with the RR

Notification ?

Software to create, validate and send

TerRaNotices – Create Notices
Online Validation – Validate
WISFAT – Send to BR

Practical information

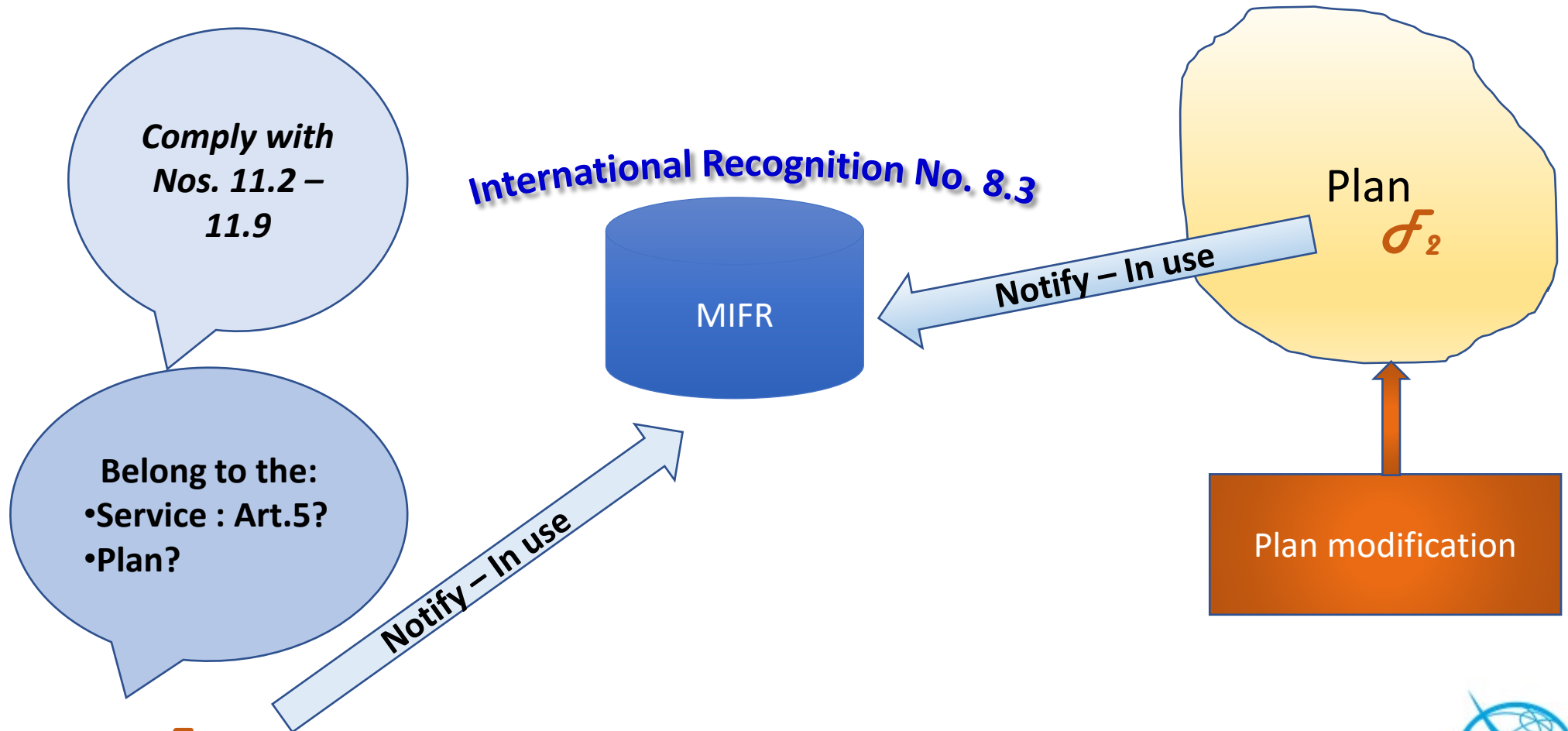
Preface to the BR IFIC
Guidelines

Regulatory information

Radio Regulations (Art. 11;
Art. 9, App.4, Regional
Agreements; RoP)



Principal of the notification procedures for recording in the Master Register (MIFR)



Notification under Art.11

NOTIFIED (Nos. 11.3 – 11.9)

- ✓ Capable of causing harmful interference to any service of another administration;
- ✓ Used for International radiocommunication;
- ✓ Subject to world/regional frequency allotment/assignment plan which does not have its own notification procedure;
- ✓ Subject to the Art. 9 coordination procedure;
- ✓ Request for international recognition
- ✓ For information only (RR 4.4).

NOT BE NOTIFIED (Nos. 11.13 – 11.14)

- × Assignments to stations in the amateur service;
- × Assignments to ship stations and to mobile stations of other services
- × Assignments involving specific frequencies which are prescribed by RR for common use – as they are already in the Master Register

Notification to the Bureau (1/3)

➤ What to Notify?

- ✓ For the recording of a frequency assignment in the Master Register:
 - Administrations shall provide the relevant characteristics listed in Appendix 4 to the RR (No. 11.15).
- ✓ For the modification of a given Plan:
 - Administrations shall provide the relevant characteristics listed in the Annexes of the relevant Agreement.
- ✓ Preface to the BR IFIC:
 - Symbols and codes are defined for some data items, such as:
 - ❖ Class of station, Nature of service, etc.;

<http://www.itu.int/en/ITU-R/terrestrial/brific/Pages/default.aspx>

Notification to the Bureau (2/3)

➤ When to notify?

- ✓ For the recording in the **Master Register (MIFR)**, the notices shall reach the Bureau (Nos. 11.24 – 11.26A):
 - Not earlier than three years before the assignment is brought into use, for terrestrial stations involved in coordination with a satellite network and for high altitude platform stations operating as a base station to provide IMT;
 - Not earlier than five years before the assignment is brought into use, for assignments to high altitude platform stations in the fixed service;
 - Not earlier than three months before the assignment is brought into use, for all other terrestrial stations;
- ✓ To modify the Plan:
 - Can be sent any time when required.

Notification to the Bureau (3/3)

➤ How to notify?

- ✓ Prepare a notice for each frequency and for each station;
- ✓ Unless the same frequency is re-used with the same technical characteristics many times within a given area:
 - ❑ A single notice: with the typical characteristics of one station of the network (RR11.17);
 - ❖ Does not apply to all services or to all frequency bands (Nos. 11.18 – 11.21B):
 - ❖ Stations covered by Allotment Plans in App. 25, App.26 and App.27;
 - ❖ Broadcasting stations;
 - ❖ Terrestrial stations within the coordination area of an earth station, etc.

Notices: Grouped by categories

LFMF

Low and medium frequency bands for sound broadcasting
T03 and T04

FMTV

VHF and UHF frequency bands for sound and television broadcasting
T01, T02, GS1, GT1, GS2, GT2, GB1, GA1

FXM

Fixed, mobile and other terrestrial services
T11, T12, T13, T14, T15, T16, T17, G11, G12, G13, G14

Electronic notice file format

```
<HEAD>
t_adm=HNG
</HEAD>
```

```
<NOTICE>
t_ <NOTICE>
t_ t_n <NOTICE>
t_ t_d t_notice_type=T12
t_ t_fr t_d_adm_ntc=2010-11-26
t_ t_fr t_fragment=NTFD_RR
t_ t_st t_freq_assgn=128.1500
t_ t_pr t_station_id=AIR AMBULANCE
t_ t_ac t_prov=RR11.2
t_ t_ct t_adm_ref_id=SF22125
t_ t_si t_ctry=HNG
t_ t_d t_site_name=BUDAORS
t_ t_is t_d_inuse=2010-08-01
t_ t_na t_is_resub=False
t_ t_ac t_nat_srv=OT
t_ t_op t_addr_code=A
t_ t_ac t_op_agcy=006
t_ t_st t_action=ADD
t_ t_er t_stn_cls=FD
t_ t_b t_emi_cls=A3EJN
t_ t_lo t_bdwidth_cde=6K00
t_ t_la t_long=+0185956
t_ t_op t_lat=+465959
t_ t_op t_op_hh_fr=00:00
t_ t_op t_op_hh_to=24:00
```

```
<ANTENNA>
t_ <ANTENNA>
t_ t_ <ANTENNA>
t_ t_ t_pwr_xyz=Z
t_ t_ t_pwr_ant=7
t_ t_ t_pwr_dbw=4.8
t_ t_ t_pwr_eiv=E
t_ t_ t_ant_dir=ND
t_ t_ <RX_STATION>
t_ t_ t_geo_type=CIRCLE
t_ t_ t_long=+0185956
t_ t_ t_lat=+465959
t_ t_ t_radius=300
t_ t_ </RX_STATION>
t_ t_ </ANTENNA>
t_ </NOTICE>
```

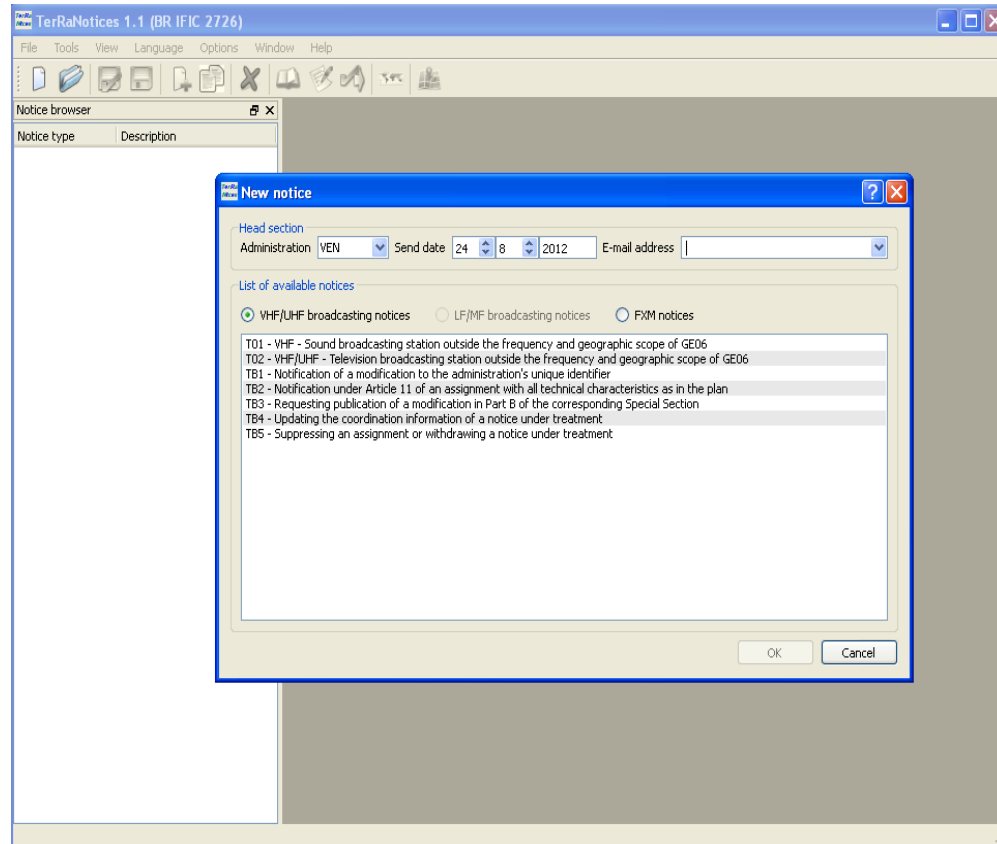
```
<TAIL>
t_num_notices=3
</TAIL>
```

- ❑ Notices must be sent electronically to the BR, to comply with Res. 906 (Rev. WRC-15):
- ❑ Structured text file in which more than one notice can be sent

<http://www.itu.int/en/ITU-R/terrestrial/tpr/Pages/Notification.aspx>

Additional information with examples of different notice types

Create a notice file : TerRaNotices



✓ Online validation tool:

- Deep validation such as checking the frequency band, geographical coordinates, potential duplicate notices, etc.
- Validation is done in batch mode so once the validation is completed the user is notified via an e-mail
- Available for all ITU Username having TIES Services at:

<http://www.itu.int/ITU-R/terrestrial/OnlineValidation/Login.aspx>

Submission to the BR - WISFAT

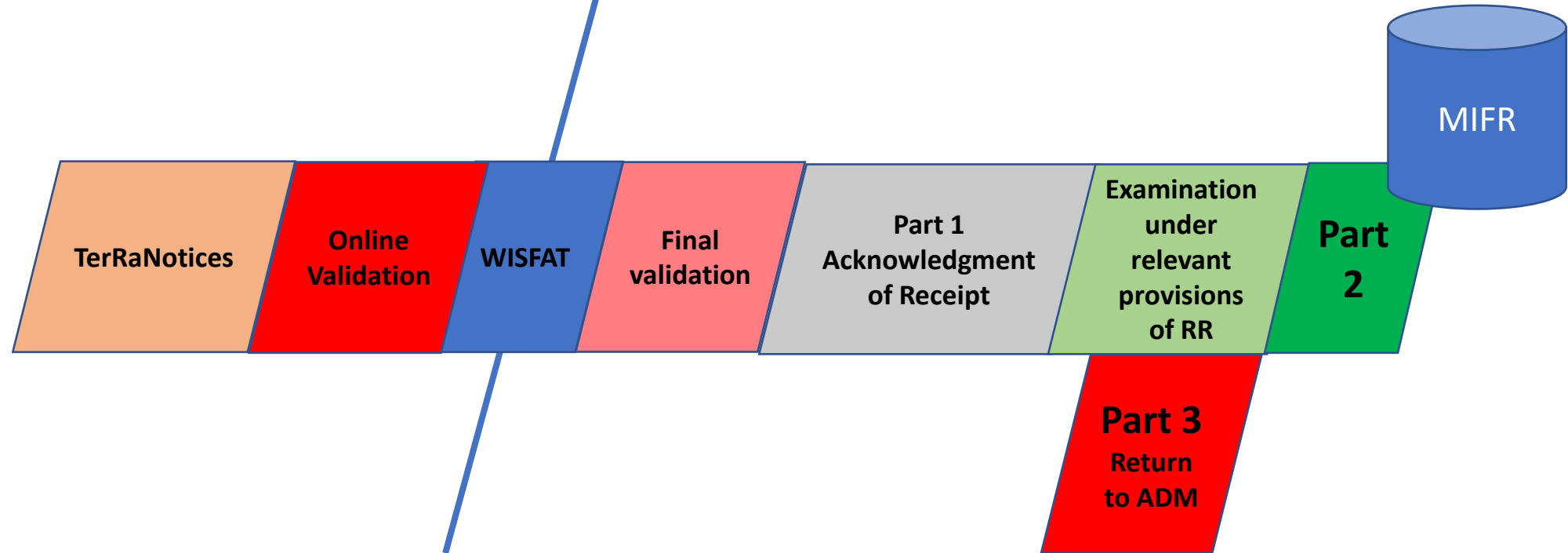
➤ How to submit the notices to the Bureau?

- ✓ WISFAT (Web Interface for the Submission of Frequency Assignments/Allotments for the Terrestrial Services) - Immediate acknowledgement report to the notifier;

<http://www.itu.int/go/WISFAT>

- ✓ Secured web Interface accessible only registered users;
- ✓ Official e-mail request (brmail@itu.int) must be sent to the BR from the administration:
 - Name, position, service e-mail, ITU Username (having TIES services);
- ✓ As many as required;
- ✓ Administration's responsibility to keep this notifiers database up to date;

Overview of the Processing : MIFR



Nos: 11.27 – 11.34

Final Remarks

- Notification has two aspects:
 - ❑ Administration's obligation to apply the provisions of the Radio Regulations as it is an international treaty signed by all ITU Member States;
 - ❑ To claim for international recognition and rights.
- Remember: **Master Register must reflect** the exact use of the radio spectrum in your territory;
- It also reflects the use of various frequency bands, this information is also taken into consideration during World Radiocommunication Conferences (WRCs), when services are looking for new allocations;
- Consult the BR IFIC to be aware of what is happening with regards to the use of the international radio spectrum by your neighboring countries.

Therefore, **notification to the Bureau is very important**

Thank you!

ITU – Radiocommunication Bureau

Questions to brtpr@itu.int or pinnagoda@itu.int

