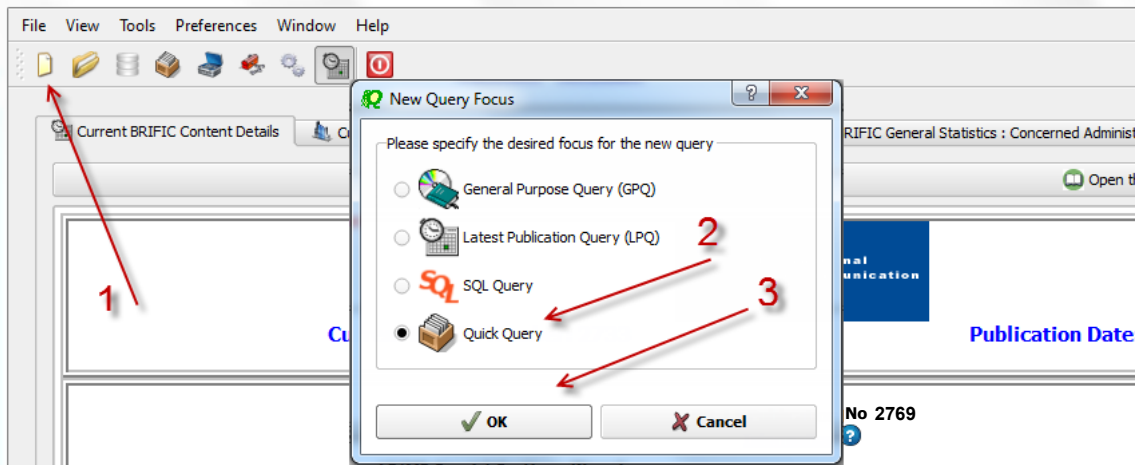


Solutions for the exercises using the new format BR IFIC DVD

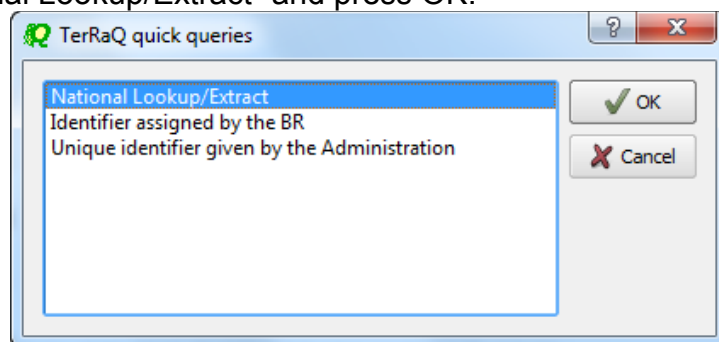
1. National extract

Retrieve all the assignments recorded in the MIFR on behalf of your Administration using the “Quick Query” option.

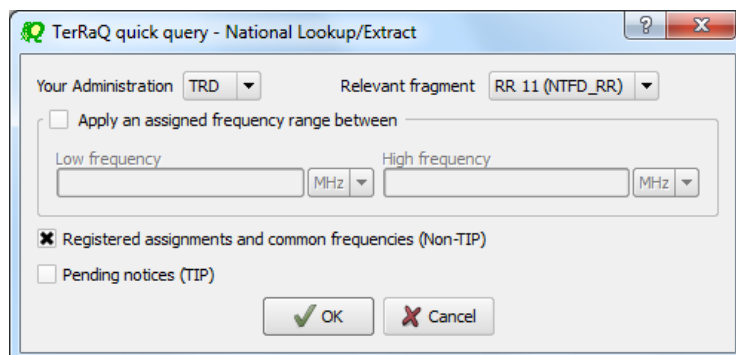
Solution: Click on the “New Query” button in the toolbar, select “Quick Queries” and press OK.



Then select “National Lookup/Extract” and press OK.



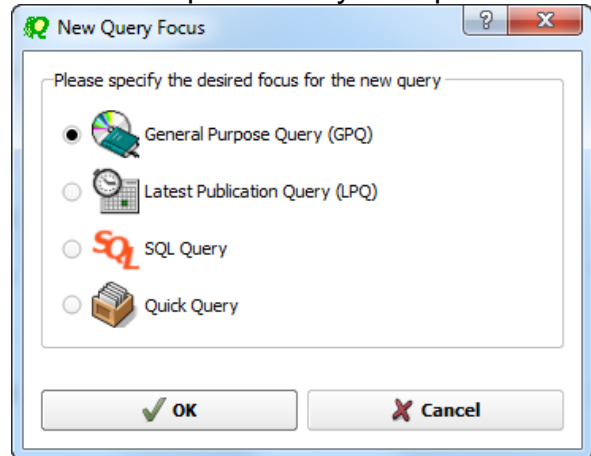
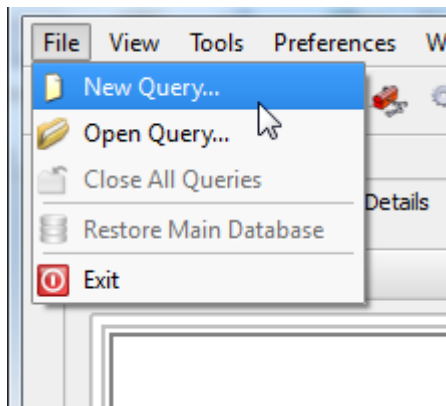
Select your Administration and clear the “Pending Notices (TIP)” check box at the bottom of the screen. Please note that the “Relevant Fragment” should be RR 11 (NTFD_RR). Press OK to execute the query.



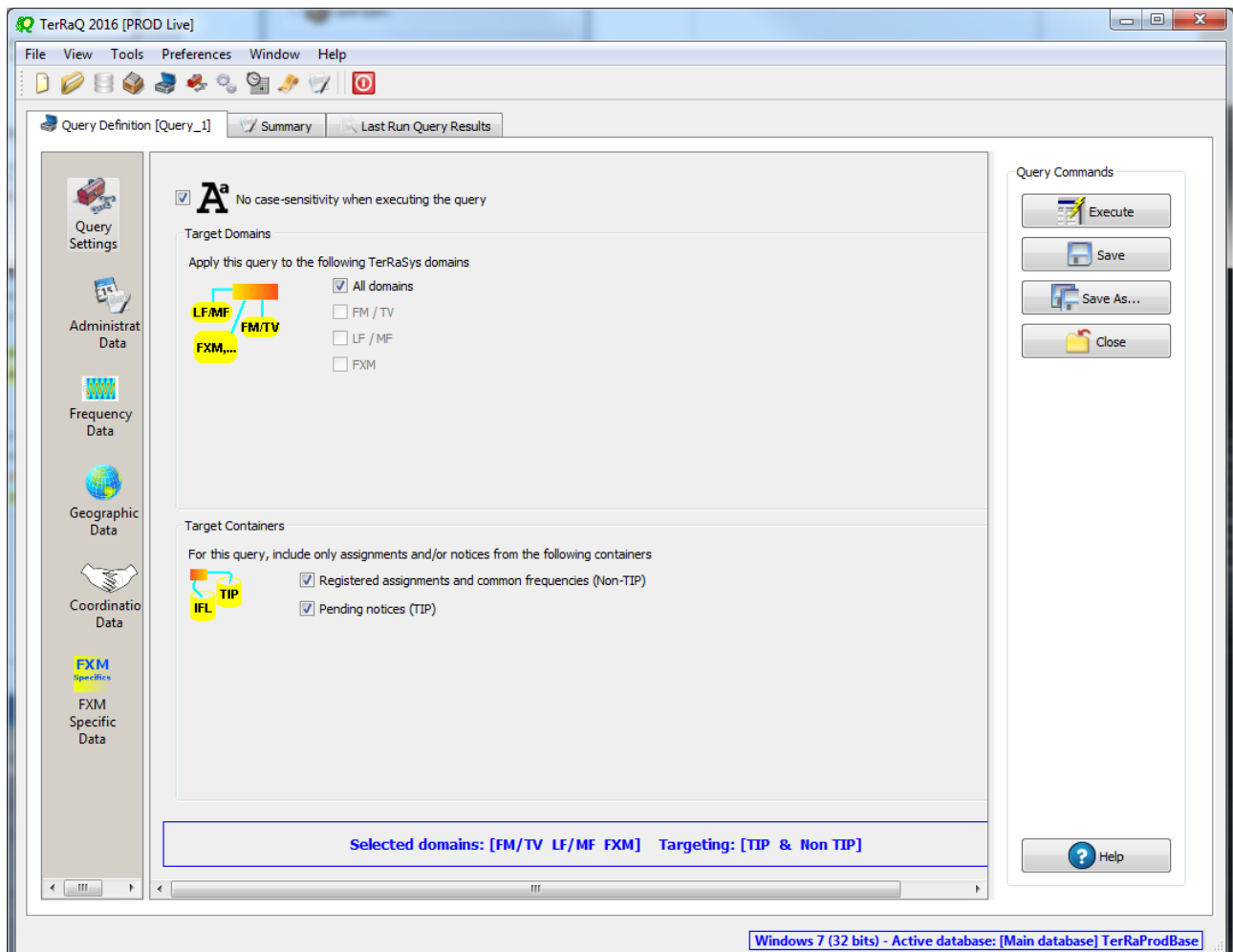
2. Search for a frequency assignment

Retrieve the frequency assignment with assigned frequency 90.3 MHz and geographical coordinates 70W4526 7N0502 using the “General Purpose Query”.

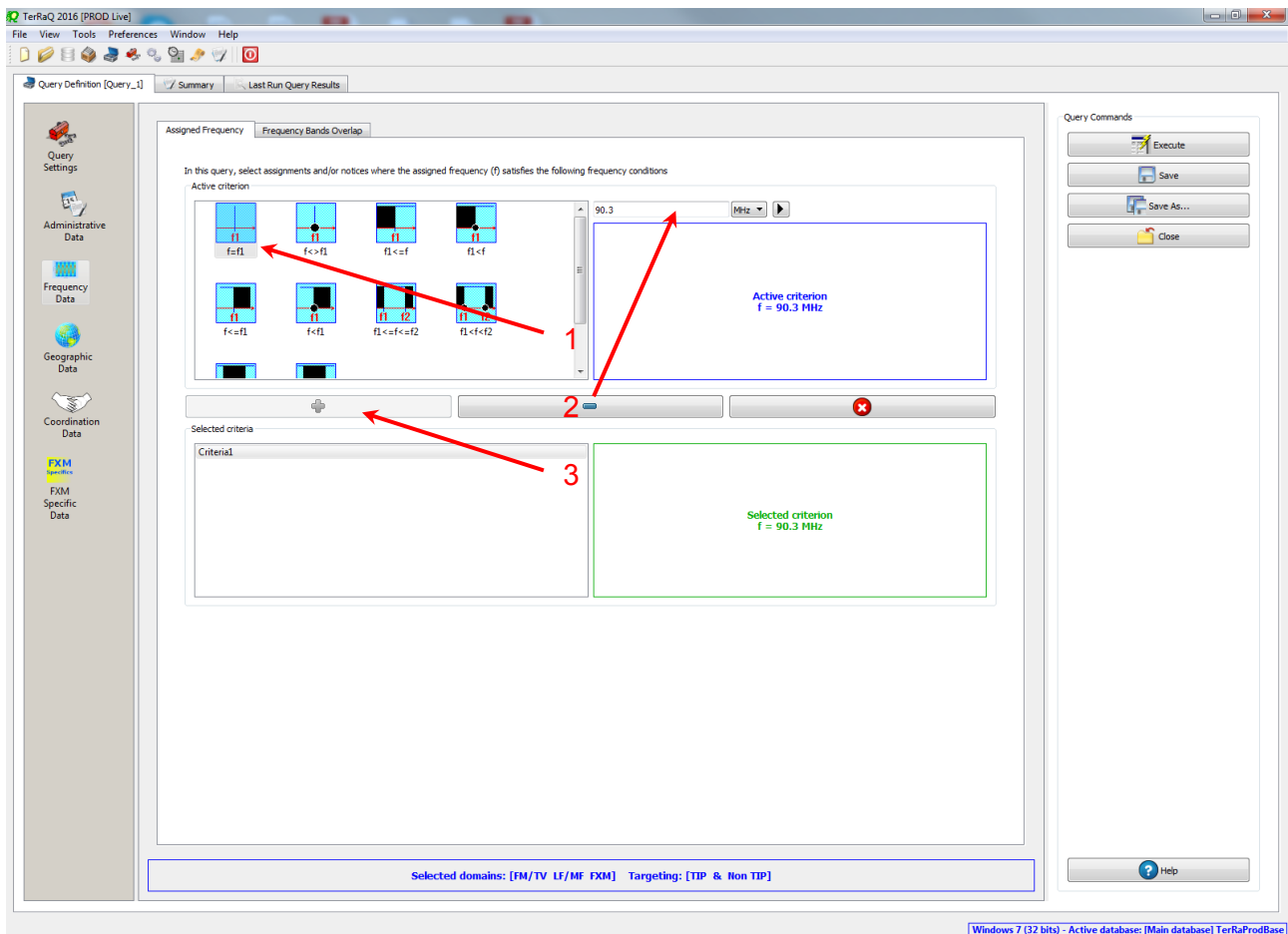
Solution: Select File->New Query menu, then “General Purpose Query” and press OK.



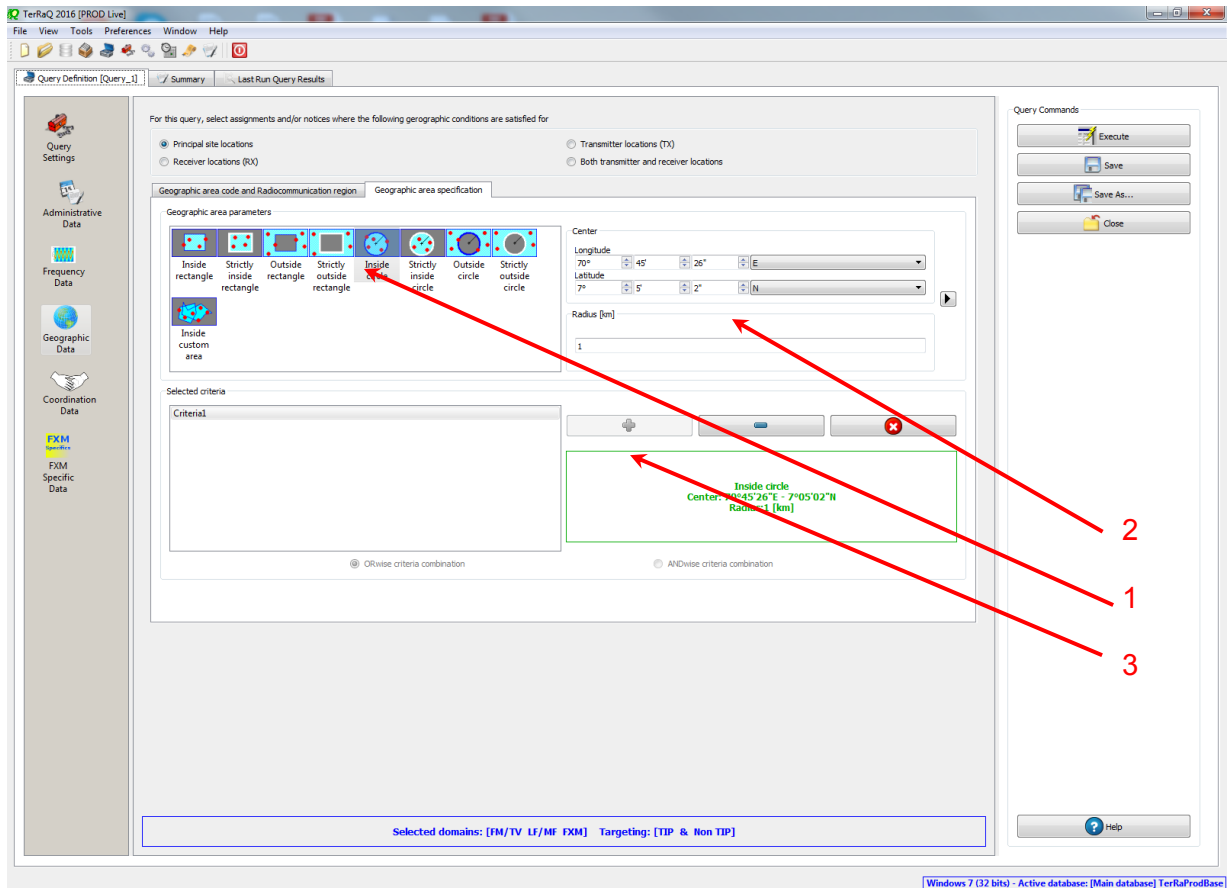
Select “All domains” in Query Settings.



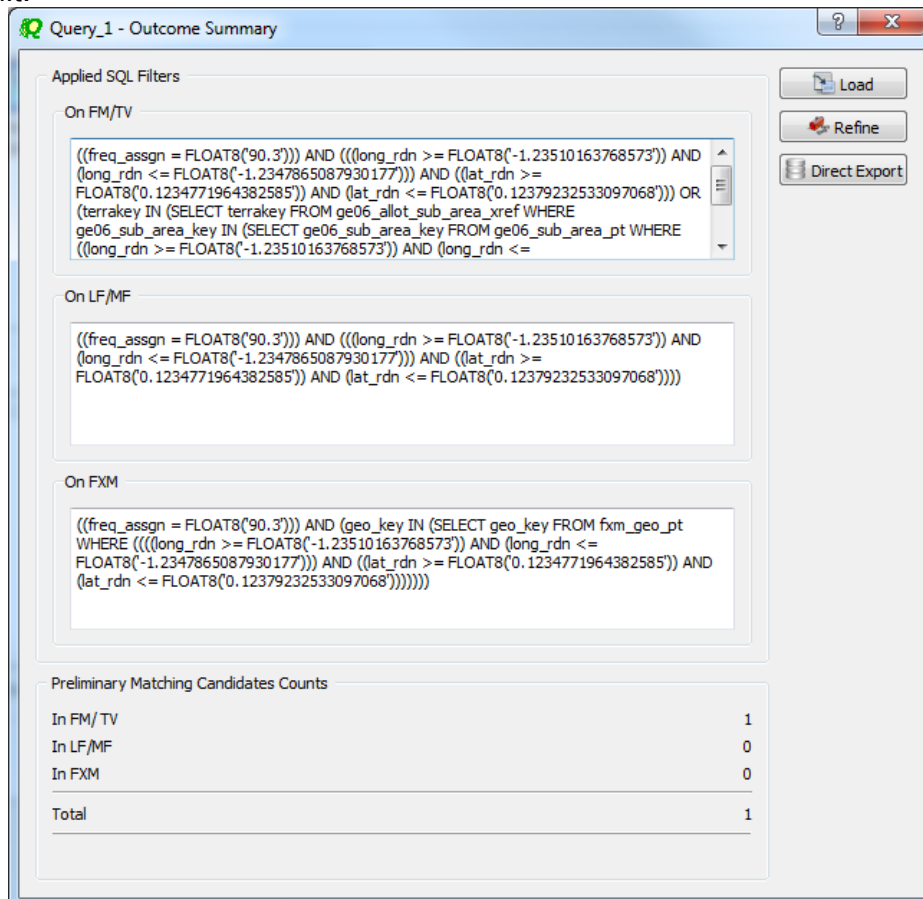
In Assigned Frequency screen under Frequency Data, select $f=f_1$, then enter 90.3 in the frequency box, select “MHz” as the unit and press + button.



In Geographic Data screen, select “Inside circle”, then enter 70W4526 7N0502 in the Longitude and Latitude boxes and enter 1 in the Radius box and press + button.



Press Execute button to run the query and in the following screen click on Load button to see the result.

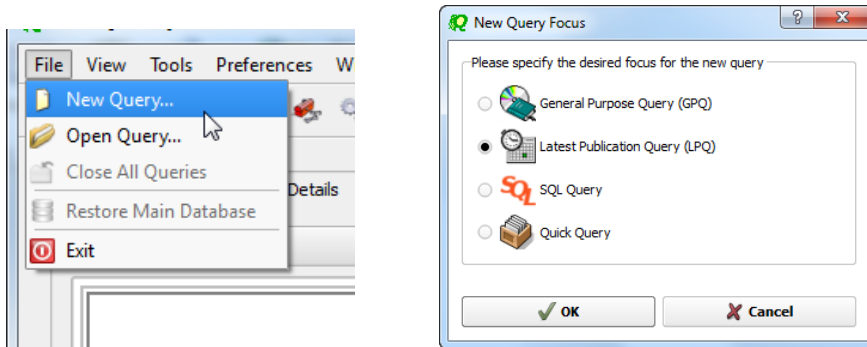


3. Latest publication query

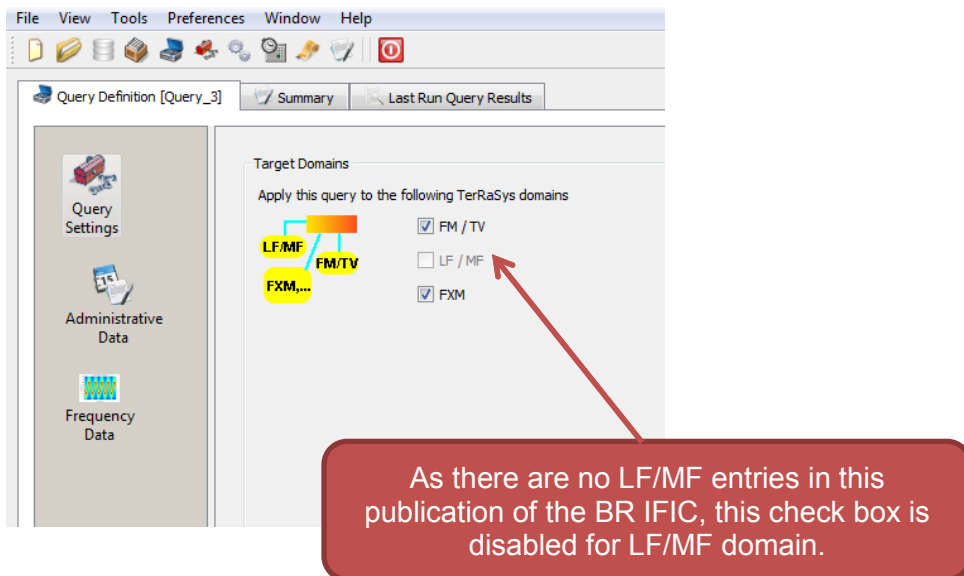
Retrieve all the frequency assignments of your Administration published by the Bureau in the latest BR IFIC.

- Indicate those published for acknowledgement of receipt

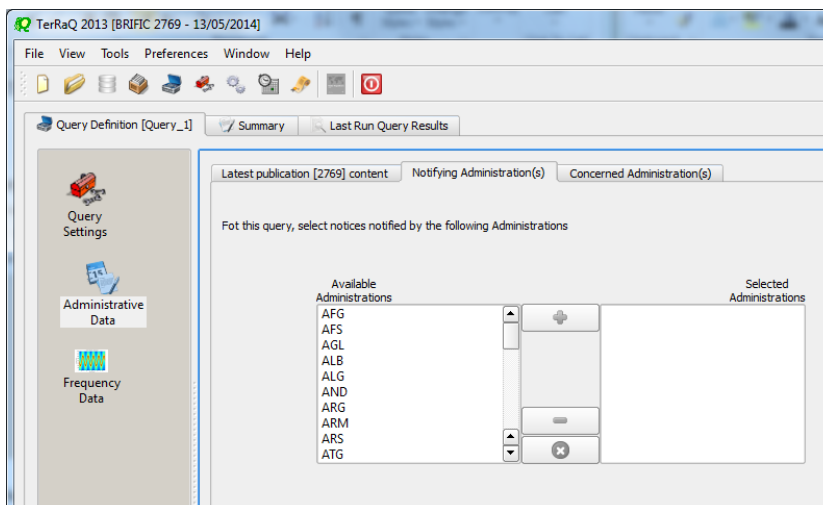
Solution: Create a new LPQ query through the menu item of File->New Query.



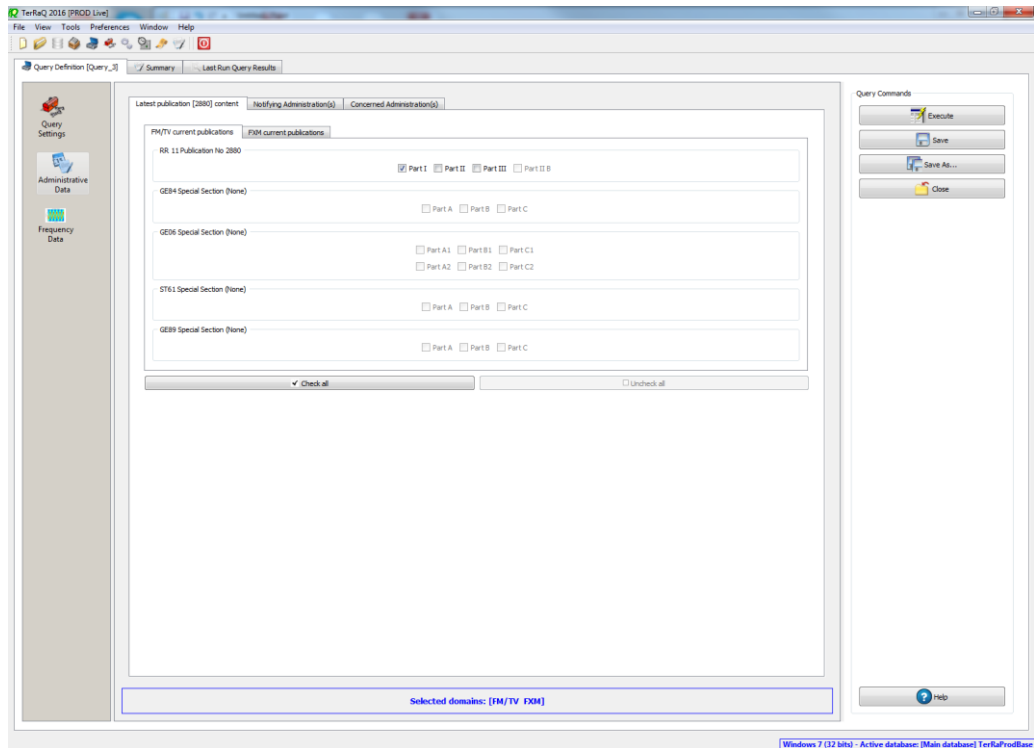
Select all available “Target Domains”.



Select your Administration under “Administrative Data”.

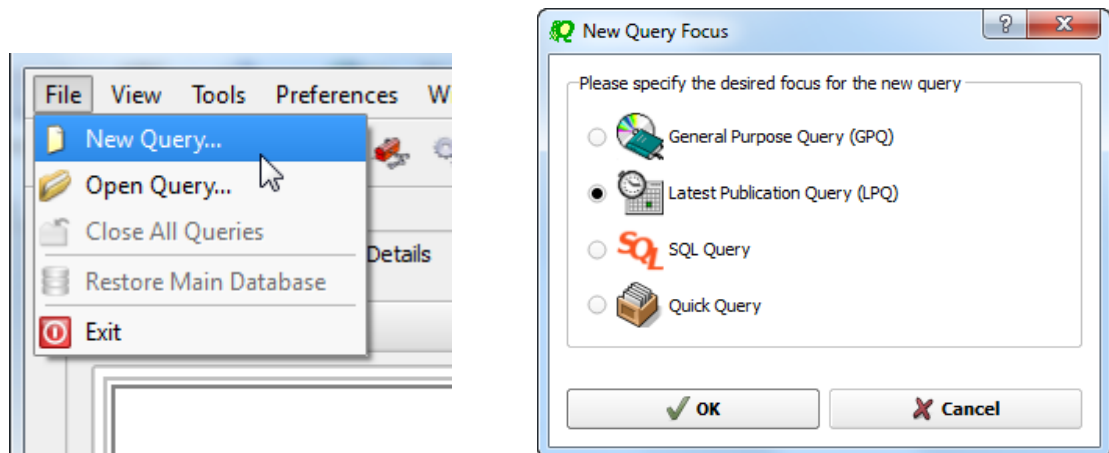


In the “Administrative Data” select only “Part I” in the box of “RR 11” under “FM/TV current publications” and “FXM current publications”. Now press “Execute” to see the result.

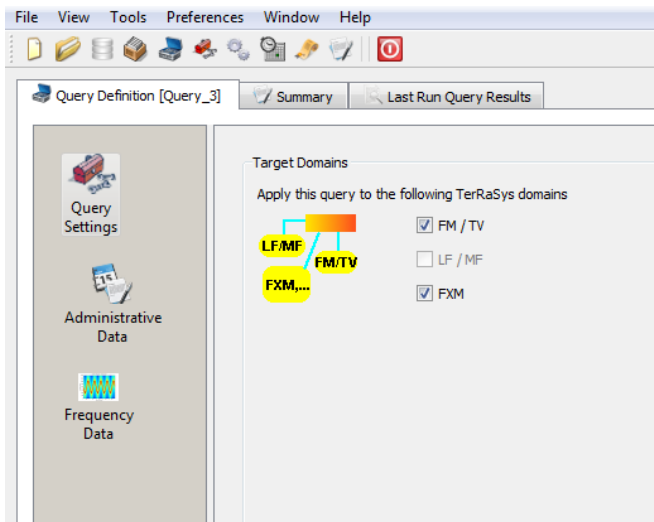


- Indicate those which are going to be recorded in the Master Register.

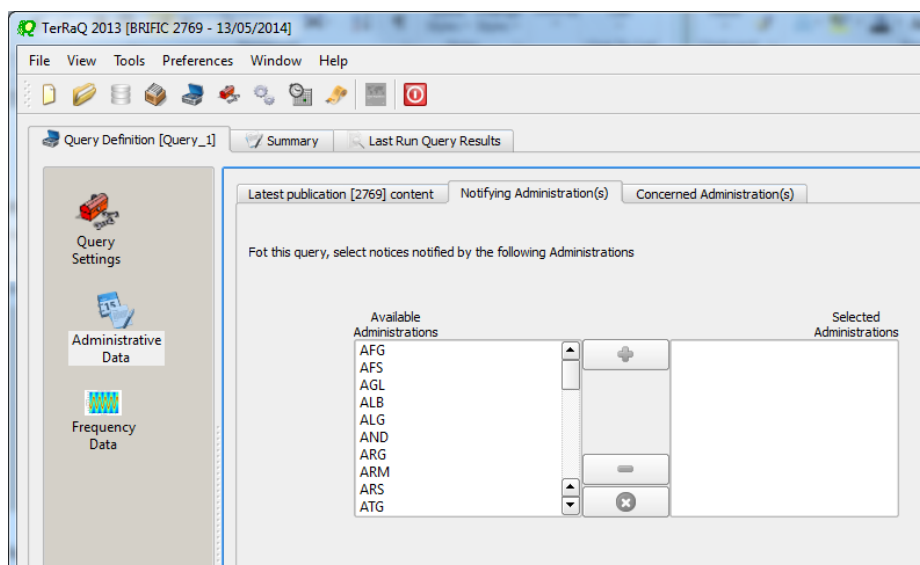
Solution: Create a new LPQ query through the menu item of File->New Query.



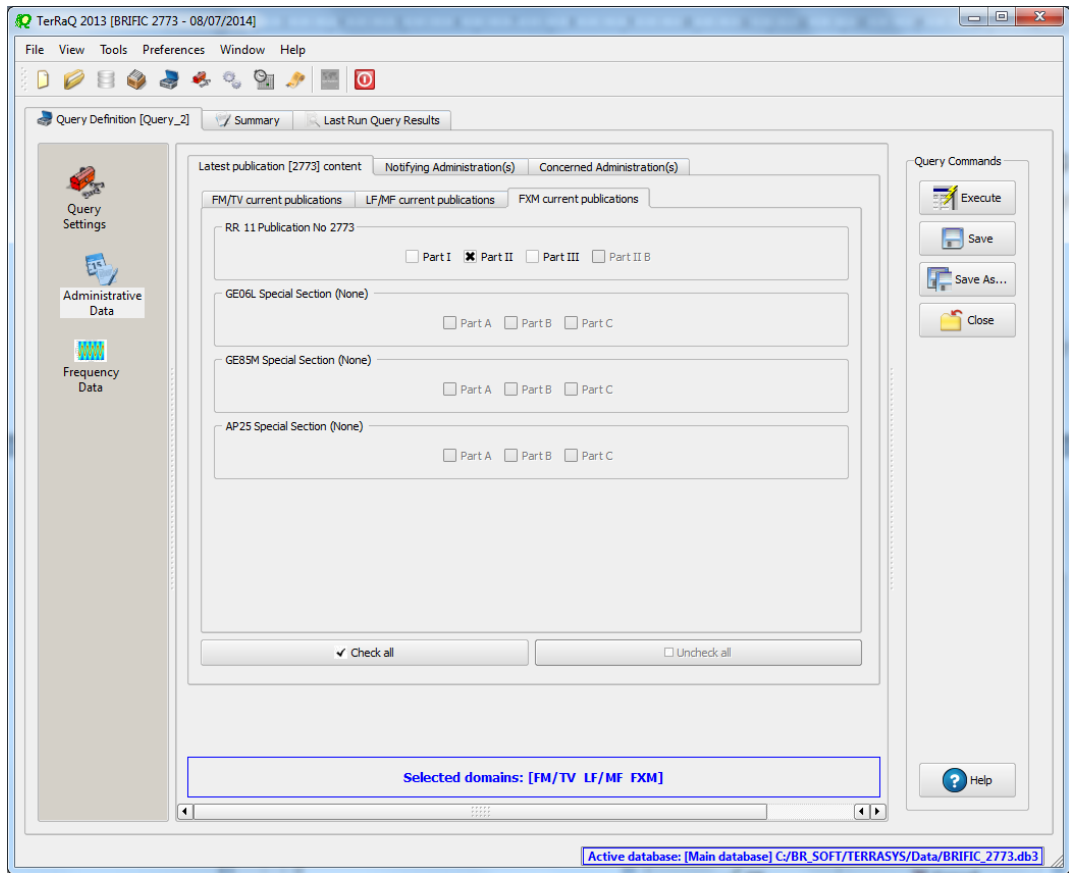
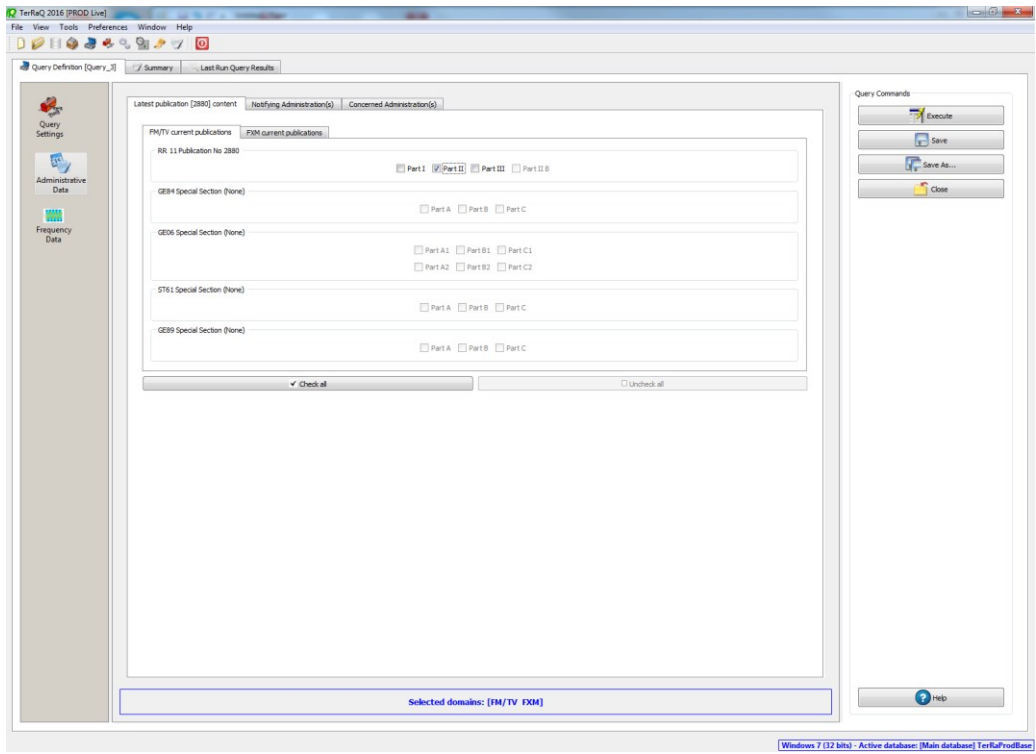
Select all “Target Domains”.



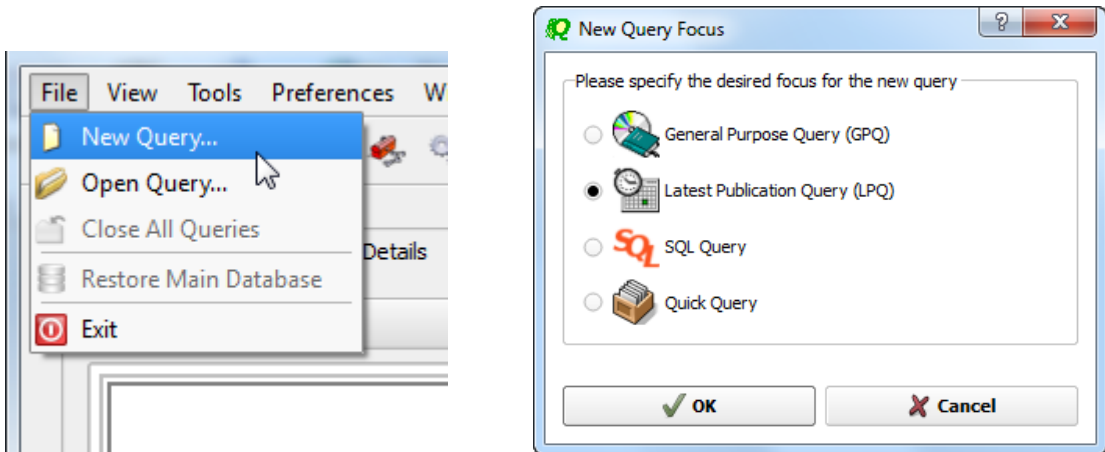
Select your Administration under “Administrative Data”.



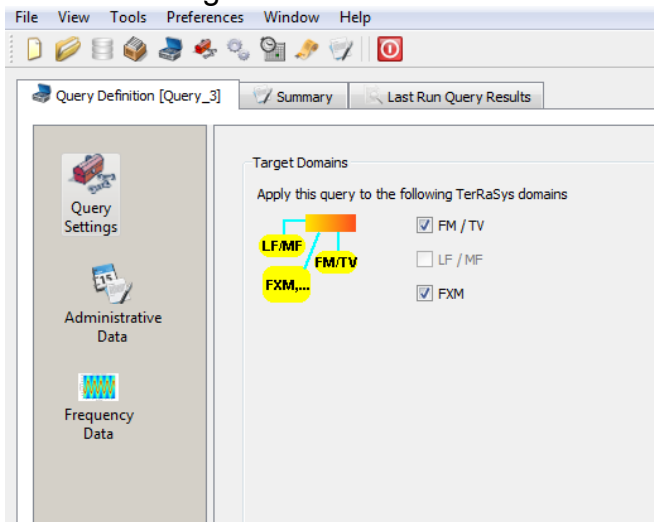
In the “Administrative Data” select only “Part II” in the box of “RR 11” under “FM/TV current publications” and “FXM current publications”. Now press “Execute” to see the result.



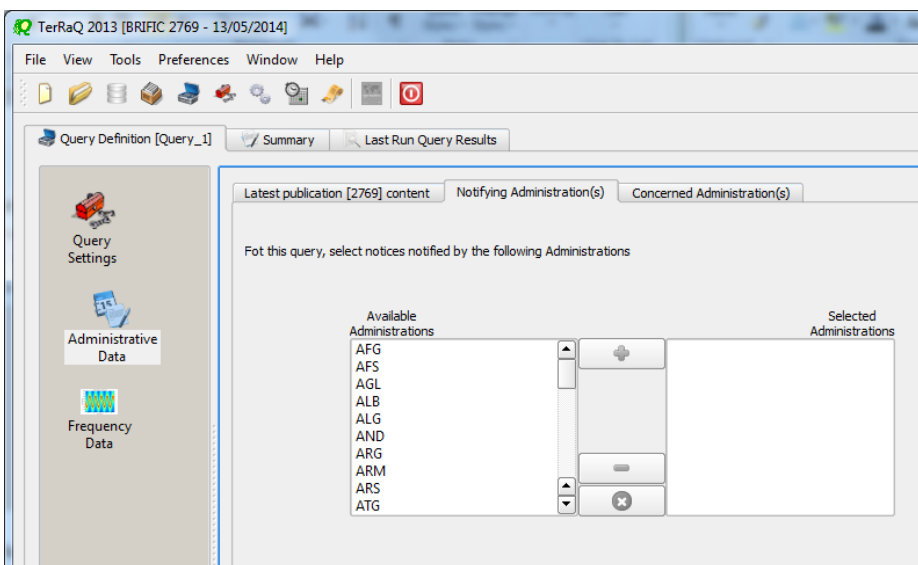
- Indicate those for which the Bureau has formulated an unfavourable finding.
Solution: Create a new LPQ query through the menu item of File->New Query.



Select all "Target Domains".



Select your Administration under "Administrative Data".



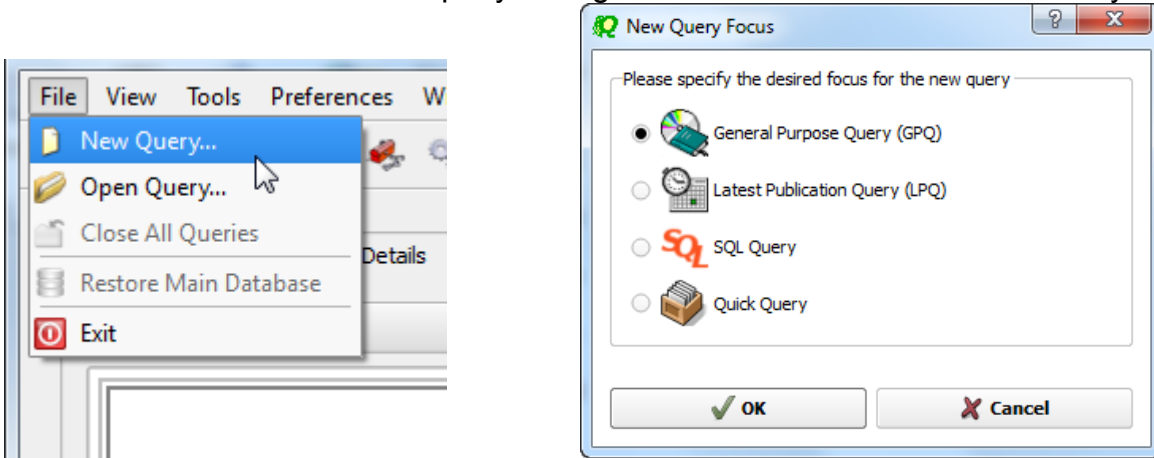
Then in the “Administrative Data” select only “Part III” under “FMTV current publications”. Now press “Execute” to see the result.

The screenshot shows the TerRaQ 2016 [PROD Live] application window. The main area is titled 'Latest publication [2880] content' and contains two tabs: 'FMTV current publications' (selected) and 'FXM current publications'. Under the 'FMTV current publications' tab, there is a list of publications with checkboxes for different parts. The first row is 'RR 11 Publication No 2880' with checkboxes for Part I, Part II, Part III, and Part II B. Below this are three rows for special sections: 'GE06L Special Section (None)', 'GE85M Special Section (None)', and 'AP25 Special Section (None)', each with checkboxes for Part A, Part B, and Part C. A red arrow points to the 'Part III' checkbox for the first row, which is disabled. A red callout box contains the text: 'As there are no FXM entries in Part III of this publication of the BR IFIC, this check box is disabled for FM/TV domain.' The bottom status bar shows 'Selected domains: [FM/TV FXM]' and a 'Help' button. The Windows taskbar at the bottom indicates 'Windows 7 (32 bits) - Active database: [Main database] TerraProdBase'.

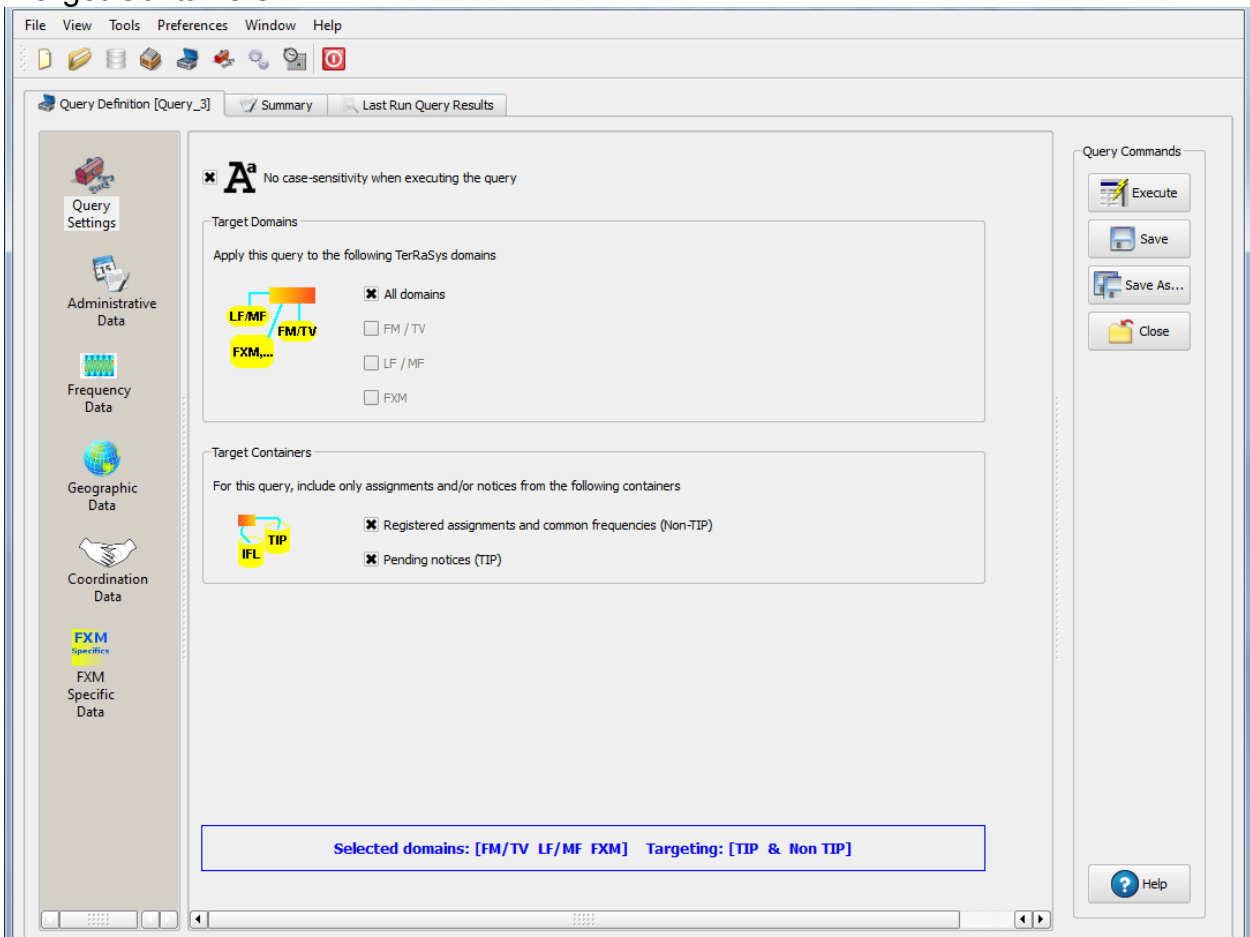
4. Notification to the BR for registration in the Master Register during year 2018

Retrieve all the assignments notified by your Administration, for registration in the **Master Register**, during 2018.

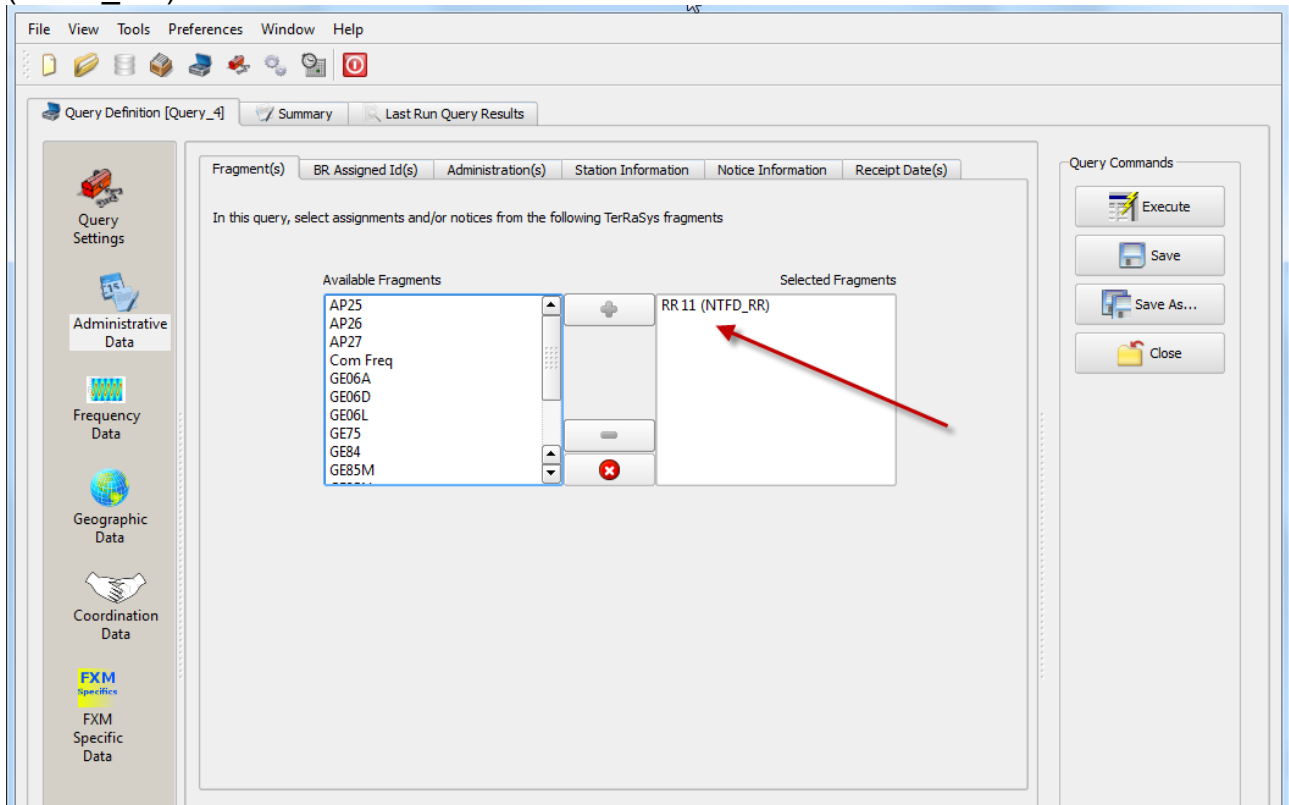
Solution: Create a new GPQ query through the menu item of File->New Query.



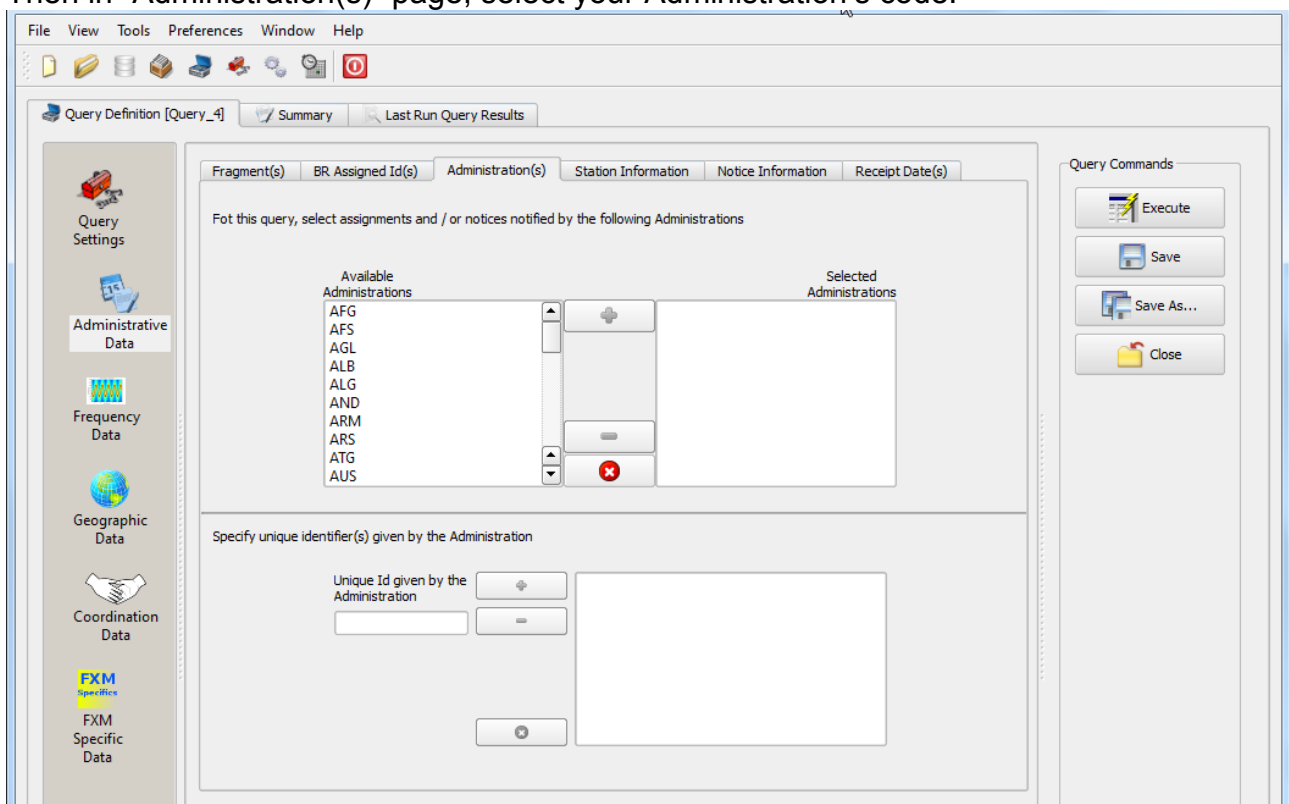
Select “All domains” as the target domain and make sure to select both check boxes in the “Target Containers”.



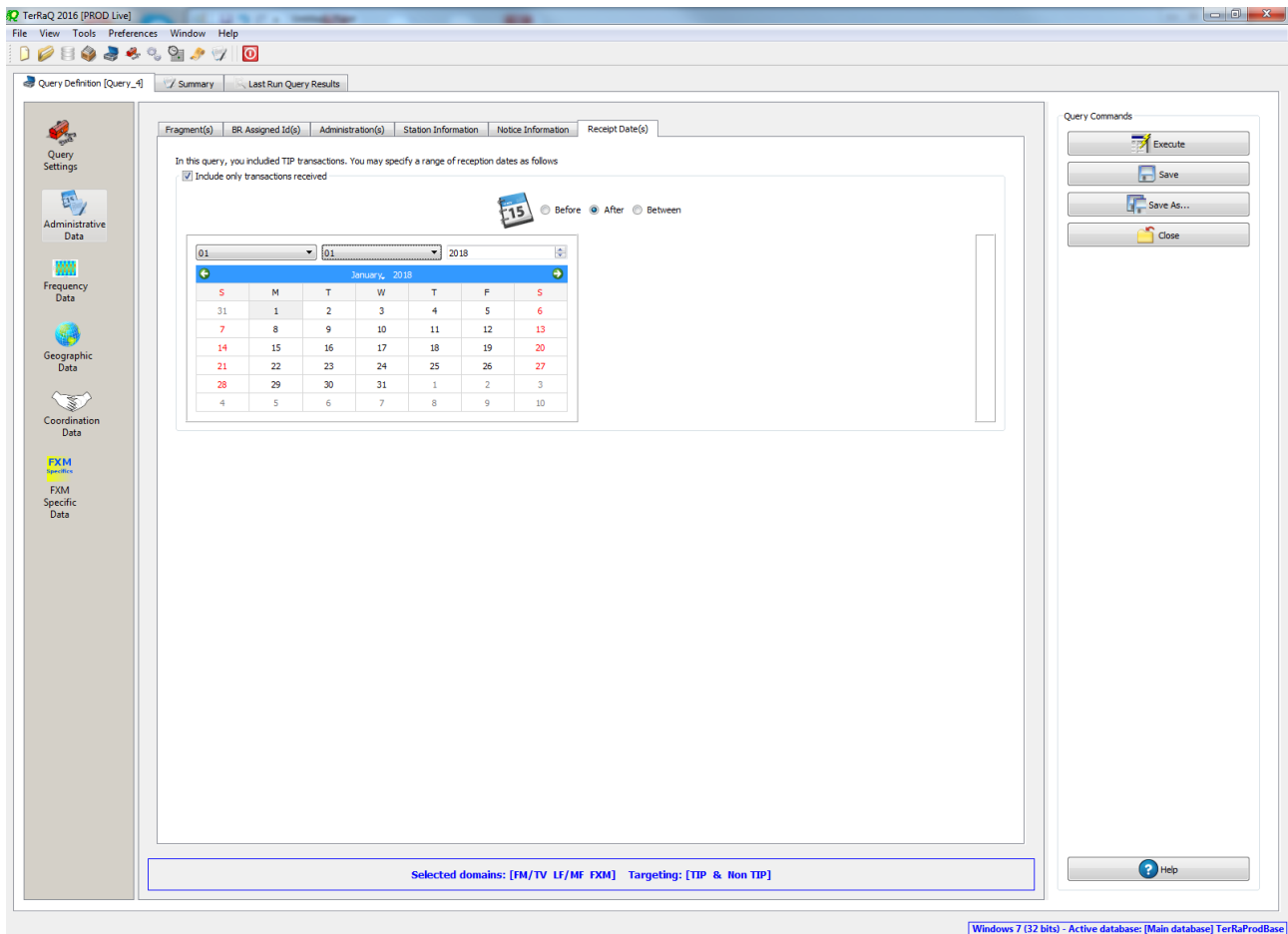
Then under “Administrative Data” and in the “Fragment(s)” page, select “RR 11 (NTFD_RR)”.



Then in “Administration(s)” page, select your Administration’s code.



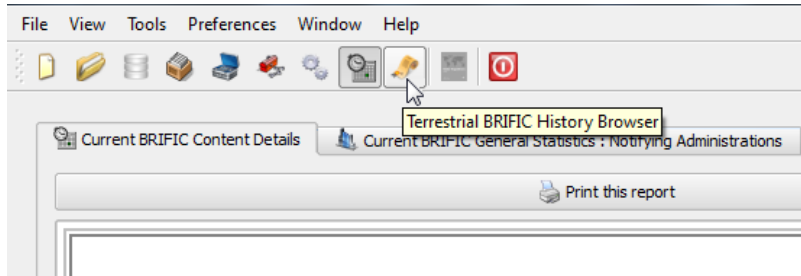
In the “Receipt Date(s)” page, select the check box of “Include only transactions received” then select “After” and enter 01/01/2018 as the date. Execute the query.



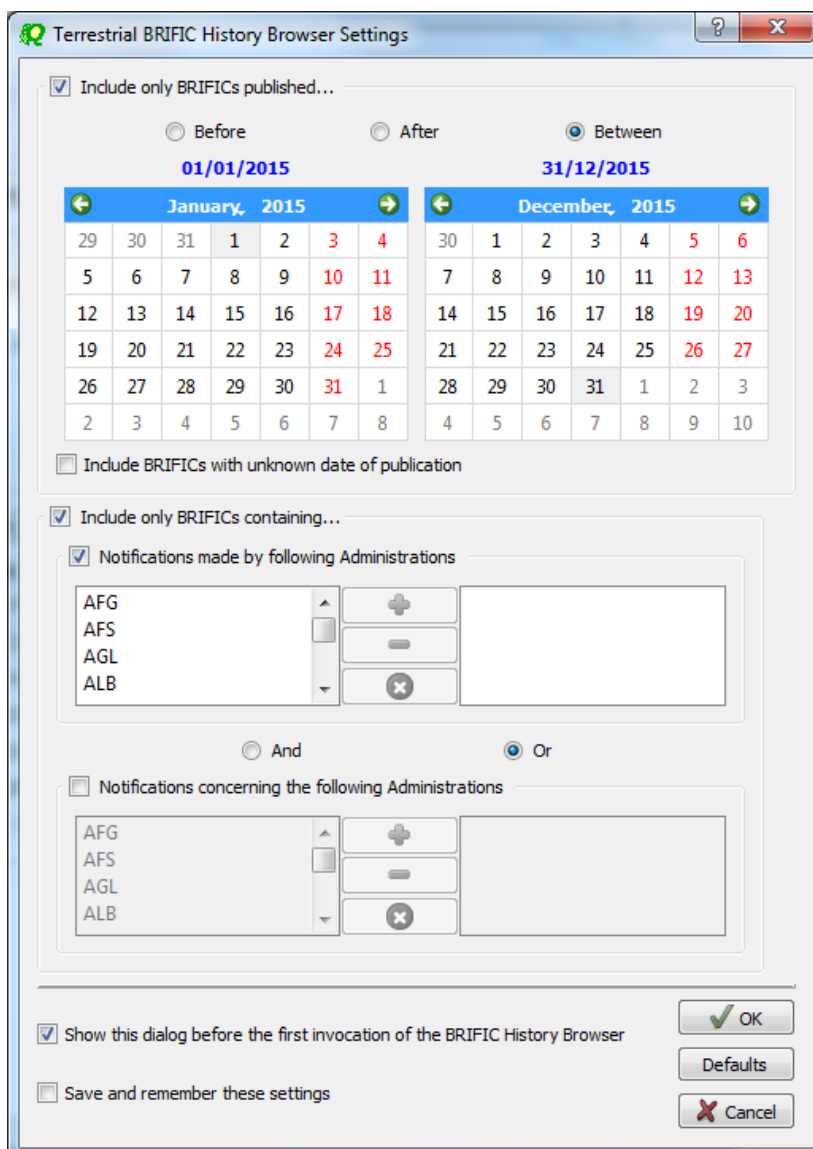
5. BR IFIC history check

Retrieve all BR IFICs published in 2015 containing notifications submitted by your Administration.

Solution: Click on the “Terrestrial BR IFIC History Browser” button on the toolbar.



At the top of the screen select the date between 01/01/2015 and 31/12/2015 in the boxes below it and select your Administration as the notifying Administration. It should be noted that you need to click on the day in each date grid to get the date set

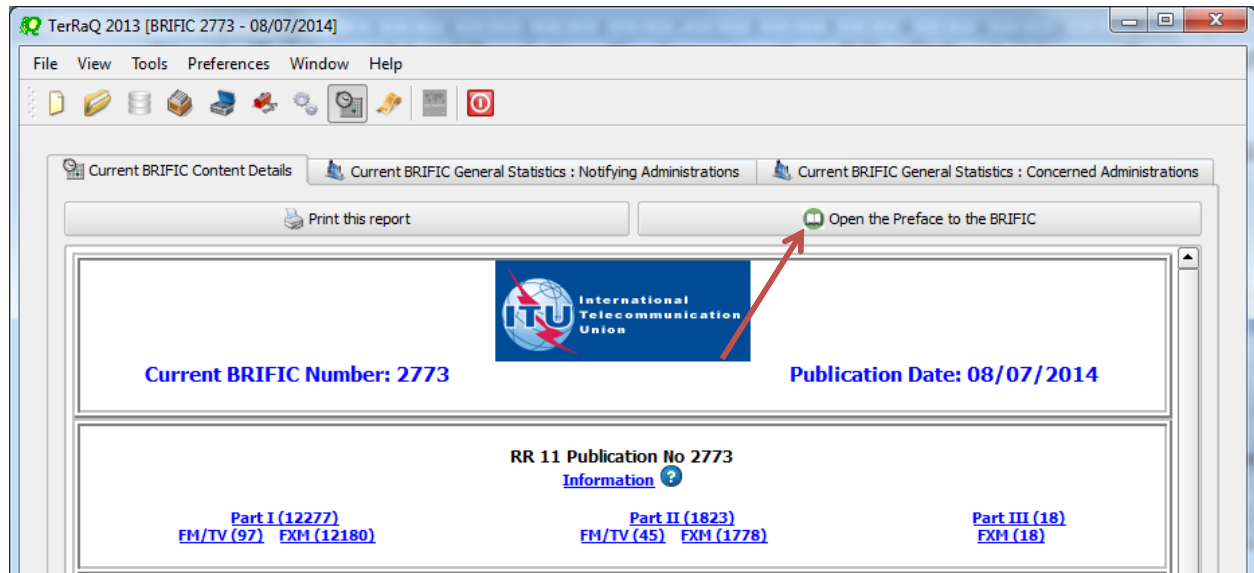


6. Update Tables 12A/12B of the Preface to the BR IFIC

Check Tables 12A/12B of the Preface to the BR IFIC (Address Codes and Operating Agencies)

Should there be any changes/suppressions, communicate them to the Bureau.

Solution: Open the Preface to the BR IFIC.



Go to Chapter IV, Section 3 “Address Codes and Operating Agencies” and check the entries under the name of your Administration.

