

International Telecommunication Union



REGIONAL
RADIOCOMMUNICATION
SEMINAR FOR ARAB COUNTRIES 2013

Tunis, Tunisia
9-13 December 2013

www.itu.int/go/ITU-R/seminars

Organised by:



Notification of frequency assignments for recording in the Master Register and Terrestrial Plans

ITU – Radiocommunication Bureau



What to notify?

- For the recording of an assignment in MR
 - Administration shall provide the relevant characteristics listed in Appendix 4 to the RR in application of provision No. 11.15 of the RR.
- For the modification of a given Plan
 - Administration shall provide the relevant characteristics listed in the Annexes of the corresponding Agreement.

What to notify? (cont.)

- By convention, certain standard codes and symbols are used in notification
 - Class of station
 - Nature of service, etc.

- Published in the Preface to the BR IFIC



- DVD sent to administrations every 2 weeks

- BR IFIC web site: <http://www.itu.int/ITU-R/go/terrestrial-brific/en>

- Guidelines on the BR's notification web site:

<http://www.itu.int/ITU-R/go/terrestrial-notice-forms/en>

Planned bands

- Notices relating to assignments that fall within planned frequency bands (governed by World or Regional Agreements):
 - Notify to the MR only if there is a corresponding plan entry
 - In case there is no corresponding plan entry:
 1. Submit a Plan modification notice to the BR
 2. Wait for the Plan to be successfully modified
 3. Notify the assignment to the BR (RR 11)

How to notify to the BR?

- A notice for each frequency and for each station
- If the same frequency is re-used with the same technical characteristics many times within a given area, optionally:
 - A single notice giving the typical characteristics of one station of the network (RR11.17)
 - Option is not available for all services or for all frequency bands (RR11.18 – 11.21B):
 - Stations covered by Allotment Plans in Ap. 25, 26 and 27
 - Broadcasting stations
 - Terrestrial stations within the coordination area of an earth station, etc.

Identification of the Notice Type

- Broadcasting service
 - Frequency band
 - Sound broadcasting in Low frequency (155 – 285 kHz) and Medium frequency (525 – 1705 kHz) – LFMF
 - Sound and television broadcasting in VHF and UHF bands -FMTV
 - Region
 - Applicable provisions of RR or Regional Agreements : Fragment
 - Class of station (BC or BT)
 - Action requested by the notice
- Fixed, mobile and other services (FXM)
 - Fragment
 - Type (Tx or Rx) and class of station

LFMF: Identification of the Notice Type

Fragment	Region	ACTION				
		ADD MODIFY	ADMINID	CONFORM	PARTB	SUPPRESS WITHDRAW
GE75	R1, R3	T03	TB6		TB8	TB9
RJ81	R2	T04	TB6		TB8	TB9
Art11	R1, R3	T03	TB6	TB7		TB9
Art11	R2	T04	TB6	TB7		TB9

FMTV: Identification of the Notice Type

Fragment	Region	ACTION CS						
			ADD MODIFY	ADMINID	CONFORM	PARTB	COORD- INATION	SUPPRESS WITHDRAW
GE06A	GE06*	BT	G02	TB1		TB3		TB5
GE06D	GE06*	BC	GS1			TB3		TB5
GE06D	GE06*	BC	GS2			TB3		TB5
GE06D	GE06*	BT	GT1			TB3		TB5
GE06D	GE06*	BT	GT2			TB3		TB5
GE84	R1	BC	T01	TB1		TB3	TB4	TB5
GE89	ABA	BT	T02	TB1		TB3	TB4	TB5
ST61	EBA	BT	T02	TB1		TB3	TB4	TB5
ST61	EBA	BC	T01	TB1		TB3	TB4	TB5
Art11	GE06*	BC	GS1, GB1	TB1	TB2			TB5
Art11	GE06*	BT	GT1, GB1	TB1	TB2			TB5
Art11	XAA - GE06*	BC	T01	TB1	TB2			TB5
Art11	XAA - GE06*	BT	T02	TB1	TB2			TB5

* the area and frequency bands governed by the GE06 Regional Agreement

FXM: Identification of the Notice Type

Type/Class of station or Plan Fragment	FX (TX)	ALL TX except FX	ALL RX	Typical Stations	Allotment AP25	Allotment AP26	Allotment AP27	GE85 Plans	Adaptive Systems
Art11	T11	T12	T13	T14	T12	T12	T12	T12	T17
Art11*	G11	G12	G13	G14					
GE06L	G11	G12	G13	G14					
APP 25					T15				
GE85M Plan								T16	
GE85N Plan								T16	

* in the area and frequency bands governed by the GE06 Regional Agreement

Electronic notice(s) file : Format

```
<HEAD>
t_adm=HNG
</HEAD>
```

```
<NOTICE>
t_ <NOTICE>
t_ t_n <NOTICE>
t_ t_d t_notice_type=T12
t_ t_fr t_d_adm_ntc=2010-11-26
t_ t_fr t_fragment=NTFD_RR
t_ t_st t_freq_assgn=128.1500
t_ t_p t_station_id=AIR AMBULANCE
t_ t_a t_prov=RR11.2
t_ t_c t_adm_ref_id=SF22125
t_ t_s t_ctry=HNG
t_ t_d t_site_name=BUDAORS
t_ t_i t_d_inuse=2010-08-01
t_ t_n t_is_resub=False
t_ t_a t_nat_srv=OT
t_ t_o t_addr_code=A
t_ t_a t_op_agcy=006
t_ t_s t_action=ADD
t_ t_e t_stn_cls=FD
t_ t_b t_emi_cls=A3EJN
t_ t_l t_bdwidth_cde=6K00
t_ t_l t_long=+0185956
t_ t_o t_lat=+465959
t_ t_o t_op_hh_fr=00:00
t_ t_o t_op_hh_to=24:00
```

```
<ANTFNNA>
t_ <ANTFNNA>
t_ t_ <ANTENNA>
t_ t_ t_pwr_xyz=Z
t_ t_ t_pwr_ant=7
t_ t_ t_pwr_dbw=4.8
t_ t_ t_pwr_eiv=E
t_ t_ t_ant_dir=ND
t_ t_ <RX_STATION>
t_ t_ t_geo_type=CIRCLE
t_ t_ t_long=+0185956
t_ t_ t_lat=+465959
t_ t_ t_radius=300
t_ t_ </RX_STATION>
t_ t_ </ANTENNA>
t_ t_ </NOTICE>
```

```
<TAIL>
t_num_notices=3
</TAIL>
```

Res. 906 (Rev. WRC-12) :
All submission of notices for terrestrial services to the BR shall be in electronic format only, as of January 2009

The electronic notice file is a sequential, record-oriented, which follows the general outline of an SGML (Standard Generalized Mark-up Language) file, with a tagging scheme.

Electronic notice(s) file : Format (cont'd)

<http://www.itu.int/ITU-R/go/terrestrial-notice/en>



Submission of frequency assignments/allotments to stations of terrestrial services

	Article 11 of the RR and Agreements (other than GE06)	GE06 Agreement
Fixed and Mobile services		
General guidelines	FMI-guide	GS-guide (see Note 1)
Description of data (see Note 2)	T11 T12 T13 T14	
Sample electronic Files	T11 T12 T13 T14	G11 G12 G13 G14
Broadcasting service		
Circular Letters	CR/120 CR/125	CR/262
General guidelines		BS-guide (see Note 1)
Format of electronic notice		GS1 GS2 GT1 GT2 G02 GA1 GB1 TB2 TB3 TB5
Description of data	T01 T02 T03 T04 T05 T06 T07 T08 T09 T10	
Sample electronic Files	T01 T02 T03 T04 T05 T06 T07 T08 T09 T10	GS1 GS2 GT1 GT2 GA1 GB1 TB2 TB3 TB5
HFBC	ITU-R HFBC Planning Software	

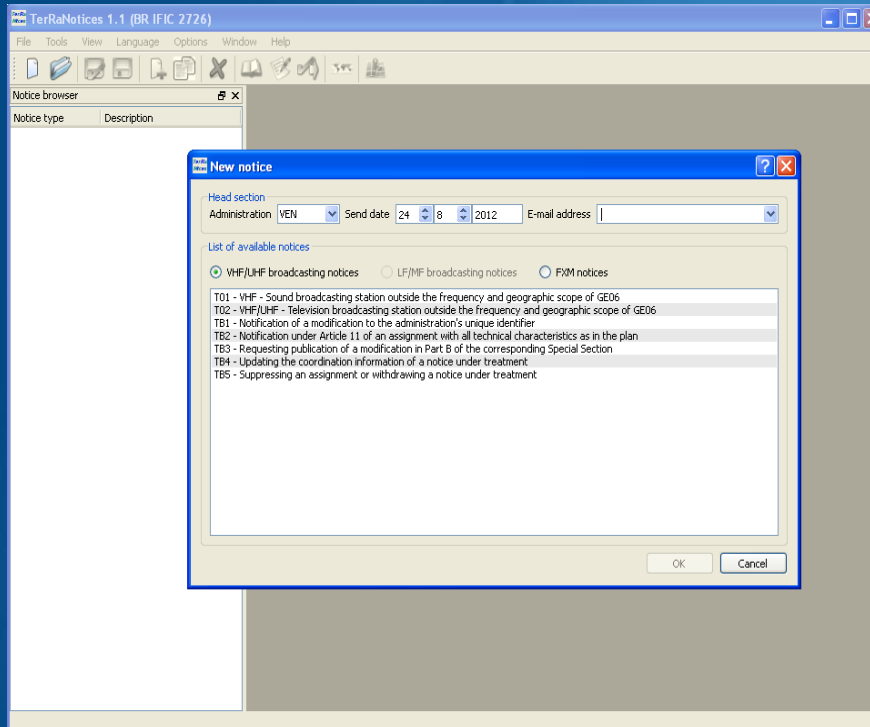
Note 1: The guidelines for GE06 submissions are also available in Arabic and Russian.
Note 2: This paper notices are used for illustration only. The submission of notices for terrestrial services to the Radiocommunication Bureau shall be in electronic format only.

Top - Feedback - Contact us - Copyright © ITU 2010 All Rights Reserved
Contact for this page : ITU-R Web Coordinator
Updated : 2010-06-15

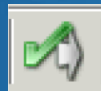
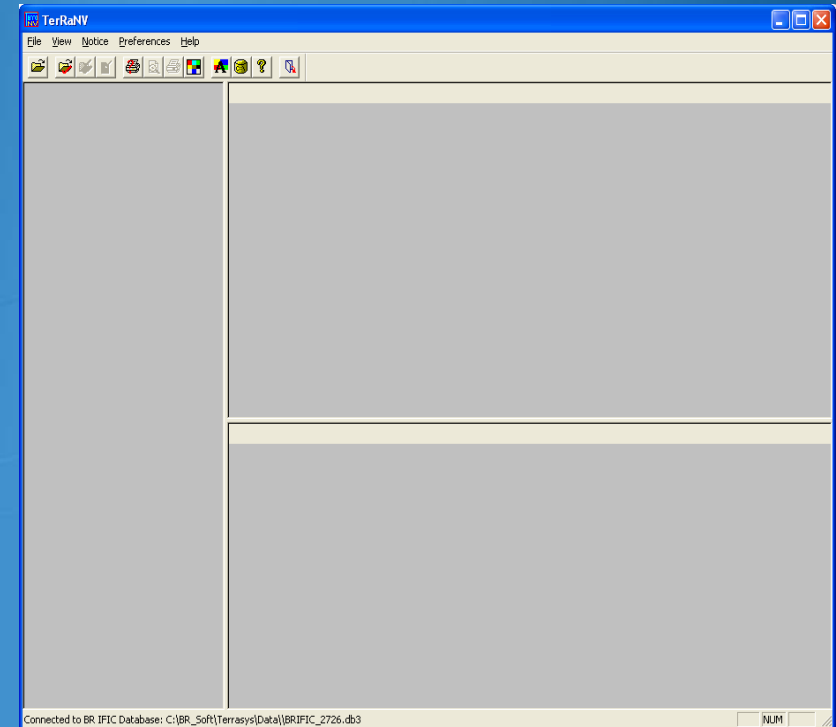
Additional information and descriptions as well as samples of different notice types can be found in the various guidelines on this web page

Electronic notice(s) file : Creation and Validation

TerRaNotices



TerRaNV



Notice Validation



How to submit notices to the BR?

- WISFAT (Web Interface for the Submission of Frequency Assignments/Allotments for the Terrestrial Services)
 - Immediate acknowledgement sent to the notifier
- Access to the WISFAT interface is restricted to registered notifiers selected by the Administration
- Official e-mail request (brmail@itu.int) to the BR from the Administration
 - Name, position, service e-mail, TIES Username

<http://www.itu.int/ITU-R/go/wisfat/en>

[Home](#) :

Search

[ITU Sectors](#) | [Newsroom](#) | [Events](#) | [Publications](#) | [Statistics](#) | [About ITU](#)**ITU-R Web Interface for Submission of Notifications of Frequency Assignments/Allotments to Terrestrial Services (WISFAT)****Submission of notices under one of the following procedures of the Radio Regulations (RR)**

- Article 9 (Coordination procedure)
- Article 11 (Update of the Master Register)
- Article 12 (HFBC Seasonal Planning)
- Appendix 25 (Allotment Plan - Coast radiotelephone stations - 4000 kHz to 27500 kHz)

Submission of notices in application of a Regional Agreement for update of the Plan

- GE75 (Sound Broadcasting - Regions 1 and 3-LF/MF bands)
- RJ81 (Sound Broadcasting - Region 2 - MF band)
- GE84 (Sound Broadcasting - Regions 1 and part of 3 - 87.5 - 108 MHz)
- GE85-M (Maritime-Mobile / Aeronautical Radionavigation - Region 1 - MF bands)
- GE85-EMA (Maritime radionavigation (radiobeacons-European maritime area - 283.5-315 kHz)
- GE89 (TV Broadcasting - African Broadcasting Area and neighbouring countries - Bands I and III)
- ST61 (TV Broadcasting - European Broadcasting Area - 41-68 MHz, 87.5-100 MHz and 162-174 MHz)
- GE06 (Analogue and digital broadcasting - parts of Regions 1 and 3 - 174-230 MHz and 470-862 MHz)

Contact for further queries brtpr@itu.int[Open Submission form](#)

Actions taken by Bureau - MR

- Submissions received via WISFAT
- Notices containing preliminary validation errors are returned (TerRaNotices/TerRaNV)
- Notices that pass preliminary validation are then further validated and also against the BR Database
 - If errors are found, notices are returned or request is made for further clarification from the administration (RR 11.27)
 - Complete notices are published in Part I of the BR IFIC (RR 11.28)
 - Examined with respect to RR 11.31 – 11.34

Actions taken by Bureau – Plan (cont'd)

- Published in Part A of the BR IFIC
- After the specific period for comments :
- If no objections have been sent to the BR from the other administrations and on the explicit request from the notifying administration
 - Published in Part B of the BR IFIC
- If submitted notice was a request for a suppression of a plan entry
 - Published in Part C

Final Remarks

- Notification has two aspects
 - Administration's obligation
 - Claim to international rights
- One of the main purposes of the Master Register is to reflect the exact use of the radio spectrum in your territory, therefore it is very important to notify and maintain it current
- Very important to consult the BR IFIC

Thank you for your attention!

ITU – Radiocommunication Bureau
Questions to brmail@itu.int or brtpr@itu.int