

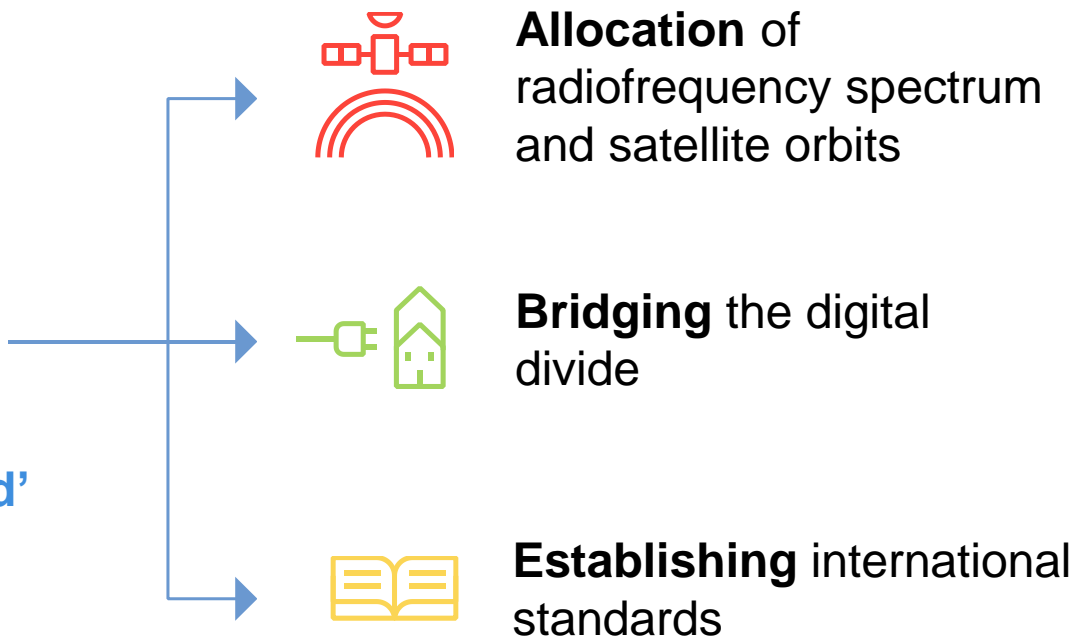


ITU Pilot Project for Small and Medium Sized Enterprises

May 2018



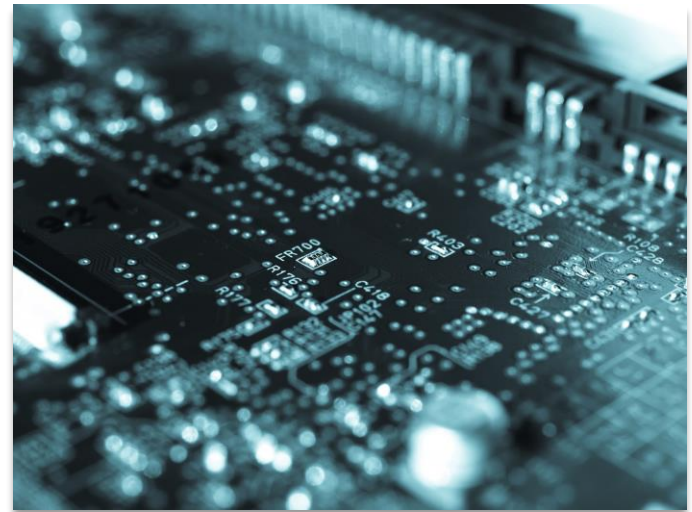
ITU at a glance



193 Member States, over 700 private-sector entities, and over 130 academic and research institutes

ITU-T at a glance

- ❑ International standardization supporting interconnection and interoperability
- ❑ One standard per (working) day approved (on average)
- ❑ Over 4,000 standards currently in force



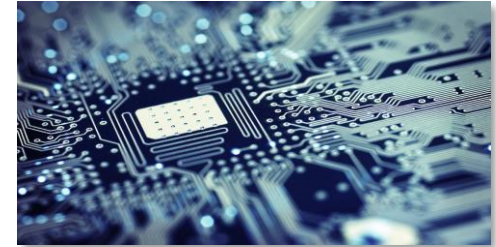
ITU is committed to SME growth

- ❑ SMEs make up more than 95% of all businesses worldwide
- ❑ SMEs account for 60-70% of GDP globally and are a key driver for ICT industry growth
- ❑ ITU is committed to fostering global SME success and leveraging the expertise of SMEs, especially from emerging markets, to contribute to the work of ITU



ITU-T participation benefits for SMEs

- ❑ Influence international standards development
- ❑ Access pre-published standards before they reach the market
- ❑ Gain an early view of emerging technologies
- ❑ Increase reputation and visibility on both a regional and global level
- ❑ Network and develop partnerships with the public and private sector



ITU SME Pilot Project

- ❑ Following a proposal from Argentina at ITU Council 2017, ITU launched an SME Pilot Project for interested ITU-T and ITU-D Study Groups
- ❑ Nationally approved SMEs are able to participate in the meetings of the participating Study Groups free of charge



ITU MoU with CABASE to spur ICT SME growth in Argentina



To help strengthen collaboration with SMEs, ITU has signed an MOU with CABASE, an association for SMEs in Argentina.



ITU Secretary General, Houlin Zhao and CABASE CEO and President, Ariel Graizer

ITU-T SME Pilot participation rights

- ❑ The pilot project would be promoted in collaboration between the involved Bureaux, regional organizations, concerned administrations and the ITU regional and area offices through contact with SMEs and SME associations.
- ❑ SMEs may participate fully in the meetings of the participating Study Groups conducting the pilot project, with the exception of any role in decision-making, including leadership roles and the adoption of resolutions or recommendations regardless of the approval procedures.
- ❑ The request of an SME to participate in the pilot project will be submitted via the concerned administration, which should confirm that they meet the national criteria to be recognized as an SME, including factors such as size of company and annual revenues.
- ❑ The pilot project would run until PP-18.

ITU-T Study Groups participating in the pilot

The following ITU-T Study Groups have implemented the pilot project:

- ❑ **Study Group 5:** Environment and circular economy
- ❑ **Study Group 16:** Multimedia
- ❑ **Study Group 20:** IoT, smart cities & communities

ITU-T Study Group 5: *Environment and circular economy*

- ❑ Electromagnetic compatibility, lightning protection and electromagnetic effects
- ❑ ICTs related to the environment, climate change, energy efficiency and clean energy, Smart Sustainable Cities
- ❑ Circular economy, including e-waste



Next meeting: TBC

ITU-T Study Group 16: *Multimedia*

- ❑ Multimedia coding, systems and applications
- ❑ Ubiquitous multimedia applications
- ❑ Telecommunication/ICT accessibility for persons with disabilities
- ❑ Internet Protocol television (IPTV) and digital signage
- ❑ Multimedia aspects of e-services, Intelligent Transport Systems



Next meeting: Ljubljana, 9-20 July 2018

ITU-T Study Group 20: *IoT, smart cities & communities*

- ❑ Internet of things (IoT) and its applications
- ❑ Smart cities and communities, including its e-services and smart services
- ❑ Internet of things identification

Next meeting: 3-13 December 2018, Wuxi, China



ITU-T SME Pilot Project recent admissions



Tunisia



Iran



Switzerland



Switzerland

ITU-T SME Pilot Project admission process

- ❑ ITU invites Member States to volunteer their SMEs to participate in ITU-T under this pilot
- ❑ Interested SMEs may also contact ITU directly. Their requests will then be submitted to the relevant ITU Member State for approval

For more information, please contact us at:
itu-tmembership@itu.int

ITU TELECOM World SME Programme

- ❑ The ITU Telecom World SME Programme focuses on helping high-growth SMEs to expand their ICT-specific products or services.
- ❑ ITU Telecom World offers SMEs valuable international exposure, ability to connect with buyers and investors.

telecomworld.itu.int



ITU TELECOM WORLD '18
Durban 10-13 September

The global event for governments, corporates and tech SMEs.



The collage shows two scenes from the event. On the left, a speaker stands on a stage in front of a large audience. The stage backdrop features the text 'DETERMINED SOONER' and '150th Anniversary of the ITU'. On the right, a wide-angle shot of a busy exhibition hall with many attendees walking through aisles lined with various booths and displays.

ITU Telecom World 2018, Durban, South Africa

10-13 September 2018



Durban 10–13 September

telecomworld.itu.int



