

# Syniverse at a Glance

**Global** IPX private network backbone with **800+** service provider connections

**39** globally distributed data centers

Reach **7+ billion** mobile devices

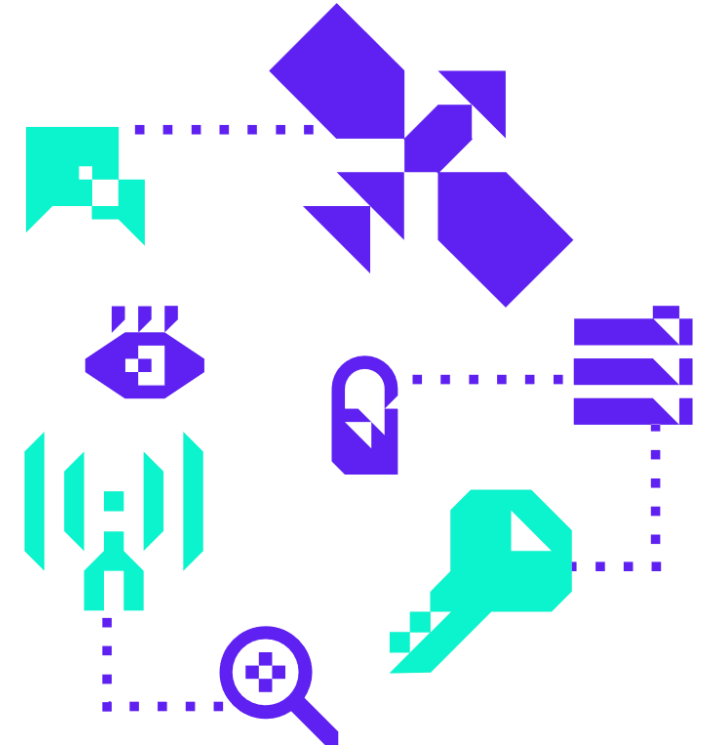
Settle **\$15 billion** USD annually

Connect to nearly **1000** MNOs; Serving the **Top 10**

Enable nearly **500** OTTs and enterprises

Employ **2200+** team members in **29** countries

Process nearly **4 billion** billable transactions daily

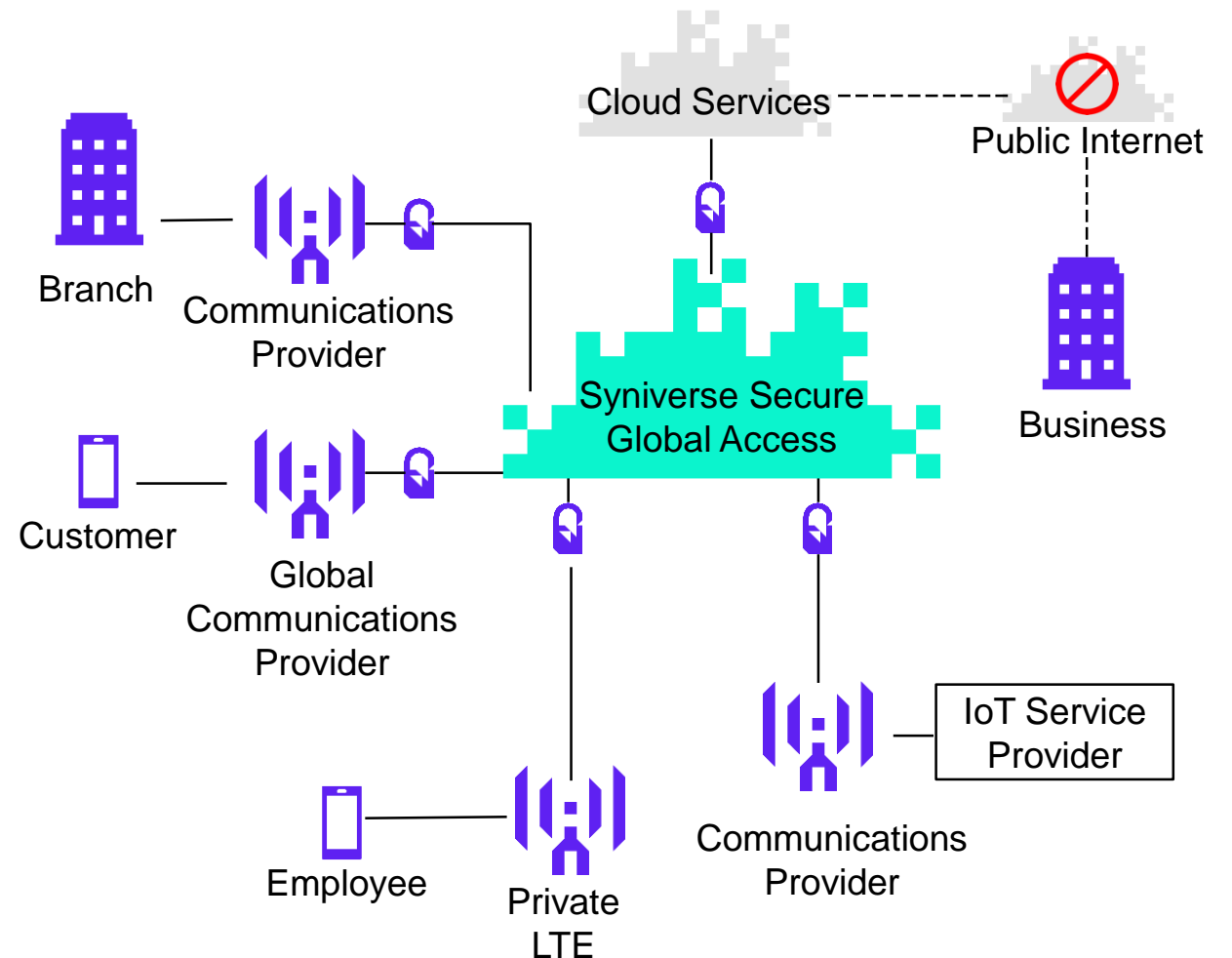


**Syniverse processes over 1.5 trillion billable transactions annually across the globe**

# Secure Global Access

A global, private IP-based network providing secure connectivity while operating independently of the public internet

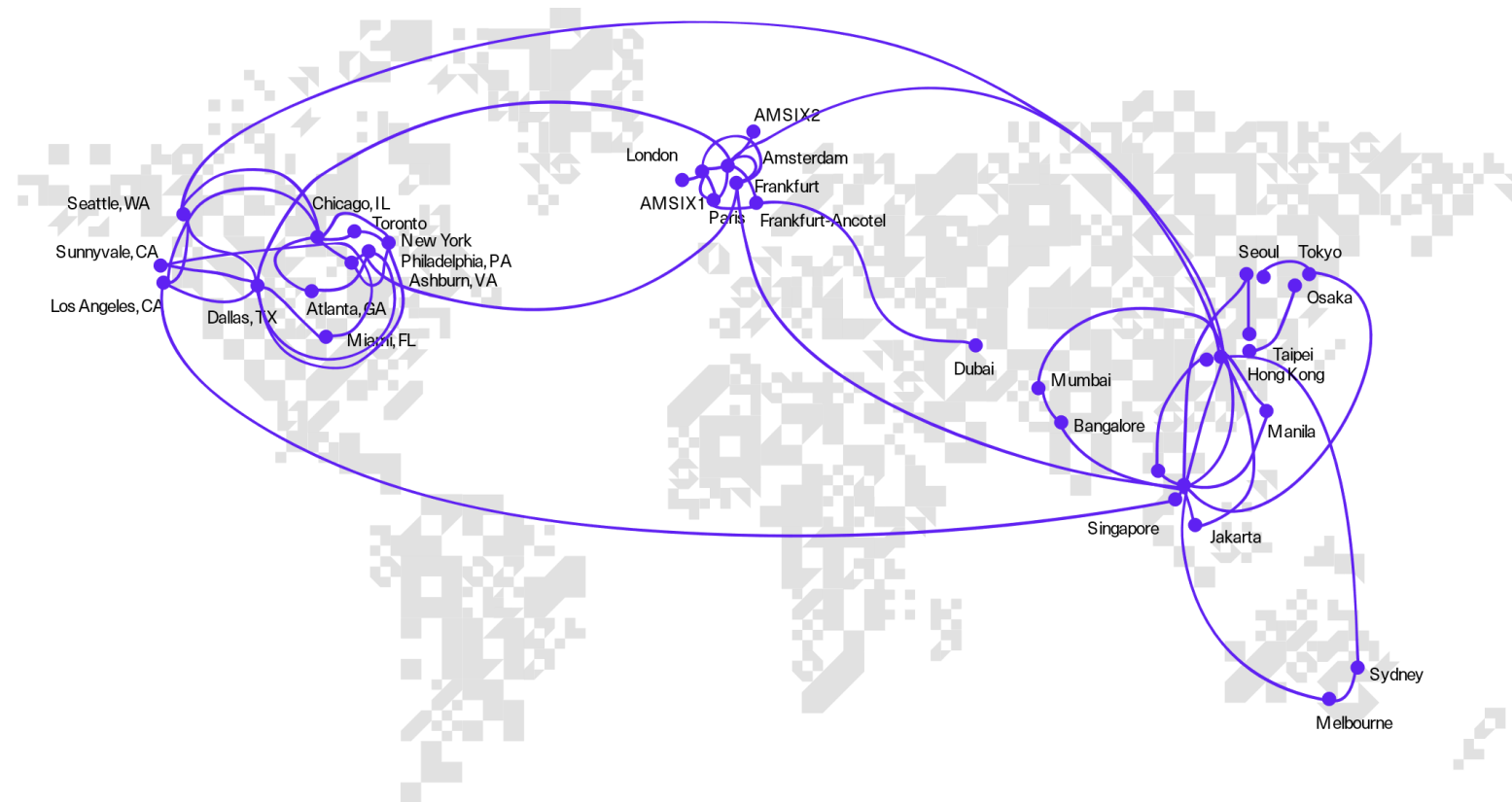
- Private, secure, and global network that bypasses the public internet
- Secure ecosystem for mass IoT communications
- Security enhancements from network to application
- Supports millions of devices, with device analytics and policy enforcement
- Foundation to reliably safeguard mission-critical data
- Direct, secure access to cloud-based applications



# Syniverse Secure Global Access

## Investment Protection

- Global, private and segregated network backbone with 240+ direct connected operators in over 158 countries
- Industry-leading capabilities
  - High capacity access/backbone bandwidth
  - KPI reporting including capacity
  - Enhanced security
- Enhanced network security and control functions from device to application
- Future-focused
  - Cloud connectivity to reach business applications
  - IoT device policy and management services
  - Network reporting and analytics



# Connected Car Use Case

## Challenge:

- Automotive and mobile need to collaborate in order to satisfy consumer connectivity needs
- For connected car manufacturers, opportunities will only be successful if data quality and security are at the forefront
- Successfully connecting in-vehicle IoT devices for telematics, vehicle health monitoring and notification, predictive maintenance, vehicle performance and optimization and passenger safety

## Solution requirements:

- Need for interconnection amongst mobile operators and business devices

## Partnering with Syniverse:

- Secure transmission of critical data from vehicles to a vehicle service platform accessible via Syniverse Secure Global Access for analytics
- Services, marketing, and business decision support

