

ABOUT CARMERA

MISSION:

- **The world's most robust street intelligence platform** for mobility and autonomy.

PRODUCTS:

- **Autonomous Map:** full-stack **HD maps** and navigation-critical data for **autonomous vehicle customers**
- **Fleet Monitoring:** data collection via **telematics** & video monitoring service for high coverage **professional fleets**
- **Site Intelligence:** data exhaust in the form of **planning analytics** for **government** and other key AV stakeholders

LOCATIONS:

- HQs in **New York** and **Seattle**; satellites in **San Francisco, Detroit, Tokyo, Seoul**

TEAM:

- Team: **Maps** @ Amazon, Apple, Microsoft; **3D/Vision** @ Google, MakerBot; **Geo/Data** @ Inrix, Snap
- Investors: Recent **Series B** venture backing from **Google Ventures, Matrix Partners** and others

TECHNOLOGY OF THE YEAR

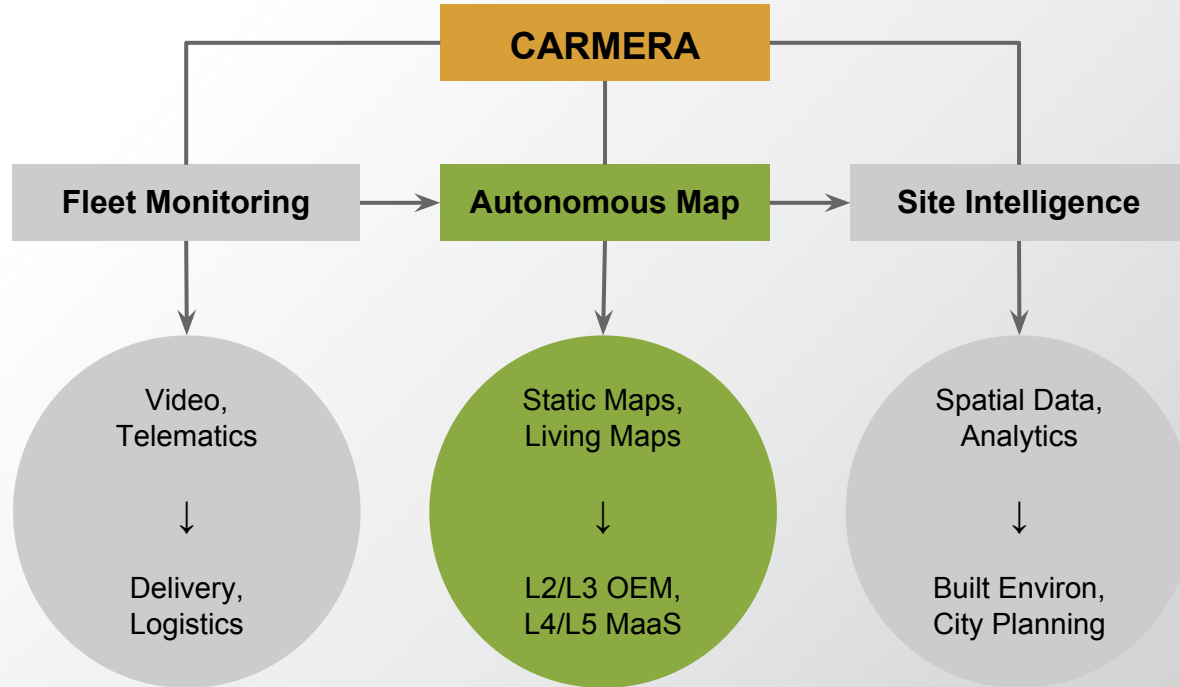


NORTH AMERICAN INTERNATIONAL
AUTO SHOW

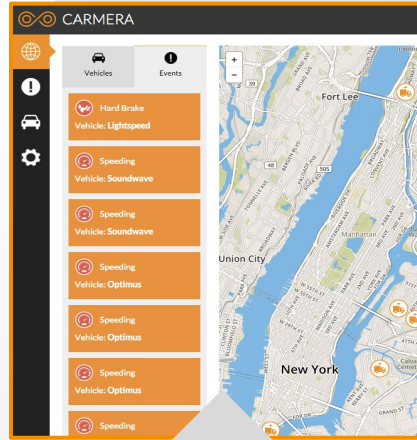


BEST IN SHOW | STARTUP OF THE YEAR

CHEAP DATA COLLECTION → LIVING AV MAPS → VALUE-ADD DATA EXHAUST



We create dense, < 20 cm accurate base maps via customer or third party LiDAR / RGB scan data

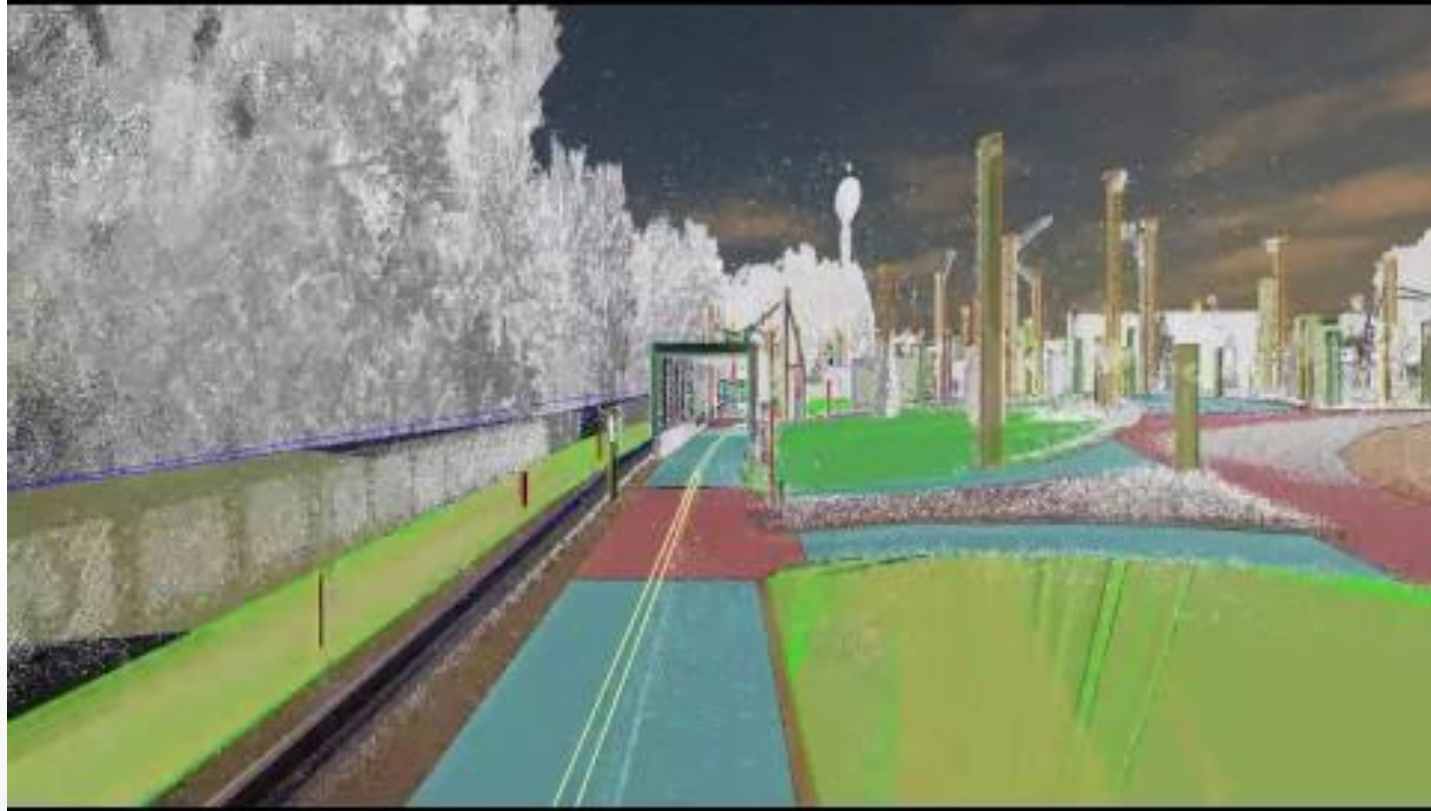


In return we mount affordable sensors on their vehicles for free high-frequency change detection



In addition, we partner with high coverage fleets, providing free video monitoring and safety analytics







MICHIGAN STATE
UNIVERSITY

Autonomous Driving in Winter Conditions

Spartan Village, East Lansing, MI



Construction Event Detected

Construction Detected - Conf = 0.61



CAMERA Fleet Monitoring video



FIRST PUBLICLY ANNOUNCED PRODUCTION DEPLOYMENT

- Voyage Self-Driving Taxi Service, The Villages, FL
- Largest announced passenger robotaxi service; > 750 miles, > 10k proj daily riders
- Large-scale static mapping followed by real-time/living map updates



HOW WE PLAN FOR CONNECTIVITY: *ASSUME THE WORST, EXPECT OKAY, HOPE FOR THE BEST*

- **The Worst:** Network deserts / extended outages
 - Robust in-vehicle modules, caching
 - Proactive warnings for data staleness
- **The Okay:** Status quo cellular in field and broadband at homebase
 - Mobile payloads within a typical consumer LTE plan
 - Nightly wifi transfers for any larger or batch updates
- **The Best:** 5G / DSRC / Ethernet-via-Charger / ? ...
 - If/when at scale, hooray! → shift more and more to cloud/fog
 - But don't **ASSUME** (“makes an **ASS** out of **U** and **M**obile **E**ngineers” ;)



