

# How we make AI acesible with an Open Marketplace

ITU Workshop on "Machine Learning  
and Beyond"

Geneva, Switzerland, 17 June 2019

**Dr Jamil Chawki**

**CEO Orange AI Marketplace**

**Chairman LF AI Outreach committee**

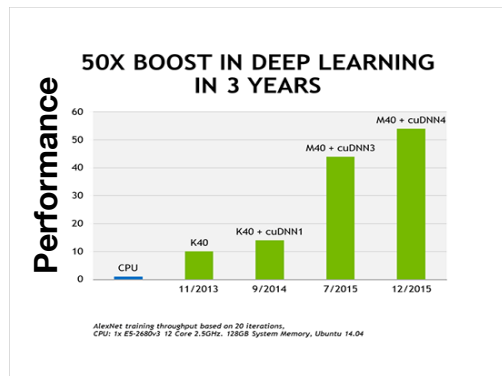


# The AI development has speed-up since 2012

1. Development of **Deep Learning** neural network (100 layers & millions of neuron)
2. Increase of Graphics Processing Unit and distributed cloud **processing**
3. Availability of **Millions of labeled data** and **company data lake**

*We are at a **decisive moment in history in terms of innovation rate & disruptive potential of AI, in all fields:***

Stéphane Richard, CEO of Orange (Viva Technology Event, 2017)

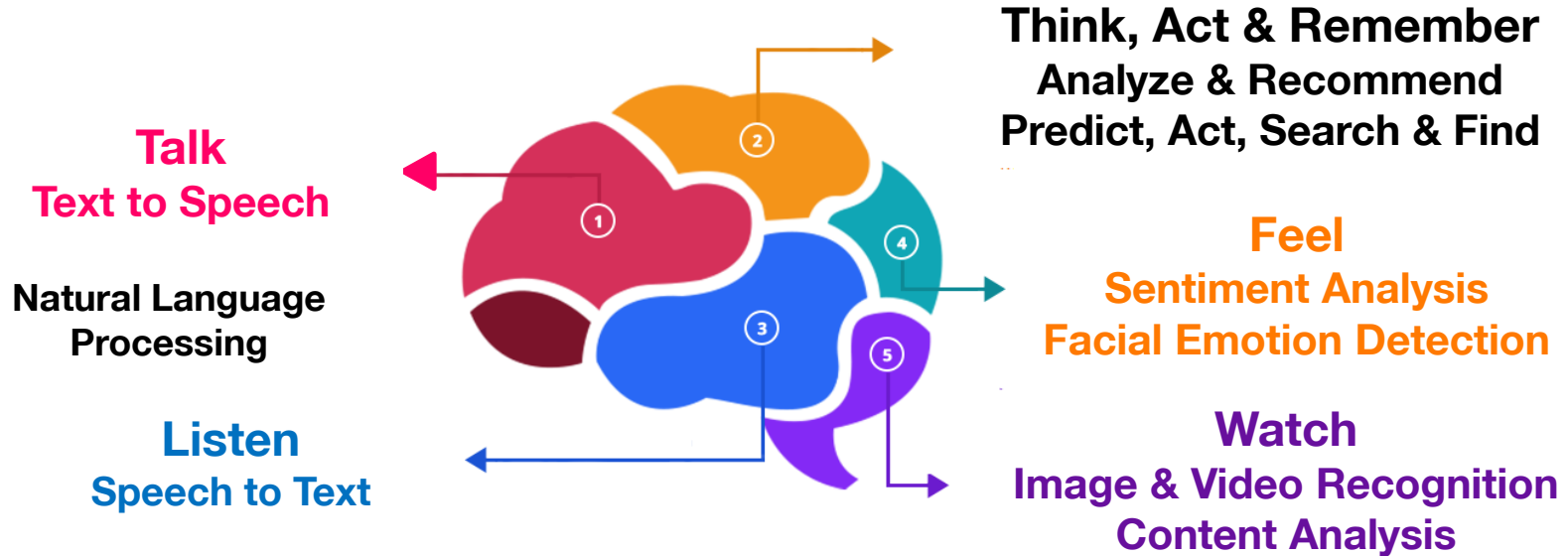


Object-recognition rate in an image 74% in 2011, 88% in 2013

➤ **97% today**

# The 5 senses of AI

## Intelligence Displayed by a machine\*



\* using Machine and Deep Learning technologies

# AI Telco use cases

1. Customer services & support



2. Marketing engagement

3. Network & IT Operations 'AIOps'



4. Security

& Enterprise Apps: Finance, Smart cities, Medical, Automotive, Transportation



# LF AI, Build & support an Open AI Ecosystem 'for Telcos'



NOKIA



ZTE



Tech  
Mahindra

Tencent  
腾讯

Baidu  
百度

 THE **LINUX** FOUNDATION

 **LF AI**

## LF AI has a modular approach to hosting projects

Provide the support for open source project and enabling services that include membership and funding, ecosystem development, legal, PR and marketing, events, and compliance scans



AI Platform and marketplace for Machine & Deep Learning models sharing and deploying.



A high-performance distributed ML platform based on Parameter Server



A framework to build cluster cloud services using different Deep Learning frameworks.



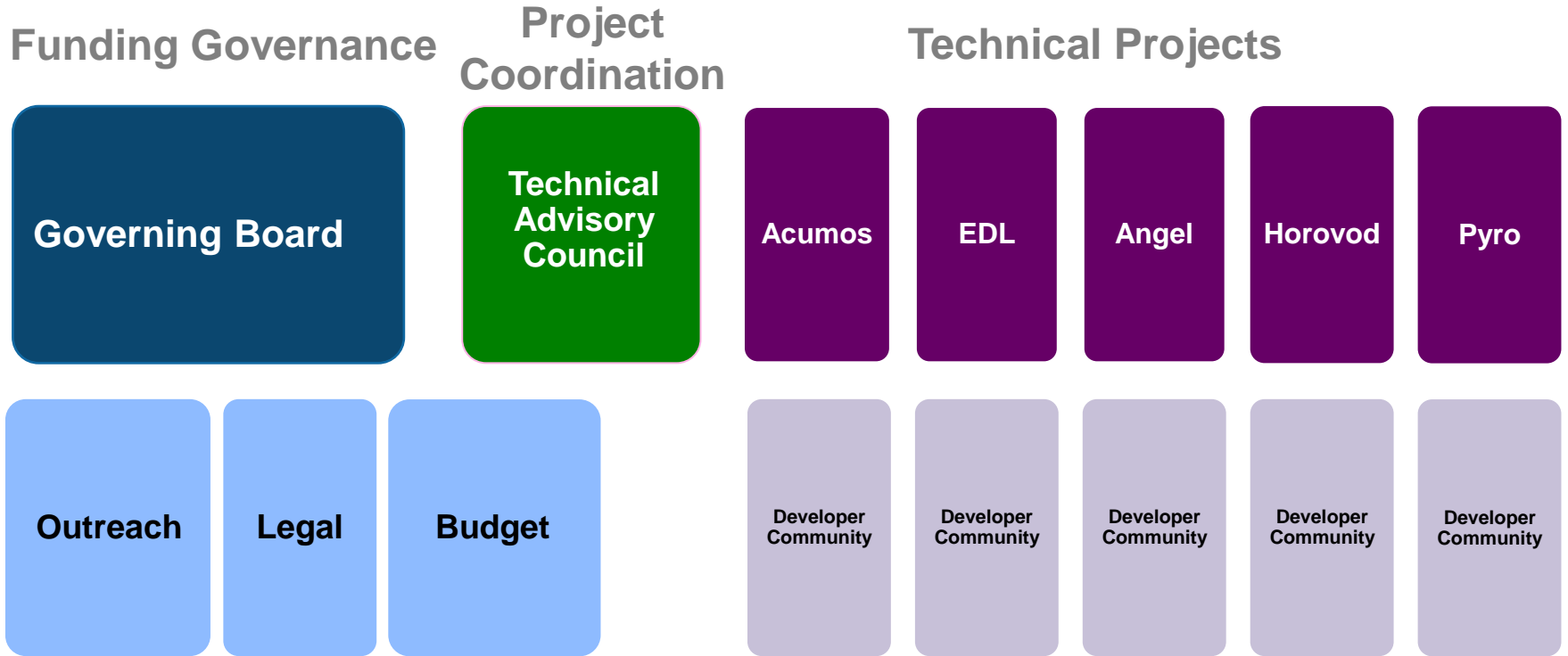
Distributed training framework for TensorFlow, Keras & PyTorch.



Pyro is a universal probabilistic programming language

# Governance Structure

[lfai.foundation](http://lfai.foundation)  
[wiki.lfai.foundation](http://wiki.lfai.foundation)



**Scarce skills (Data Scientists) to develop AI**  
**Difficulty to deploy and scale AI Models**



**How to make AI accessible, easy to share to  
deploy and to use ?**

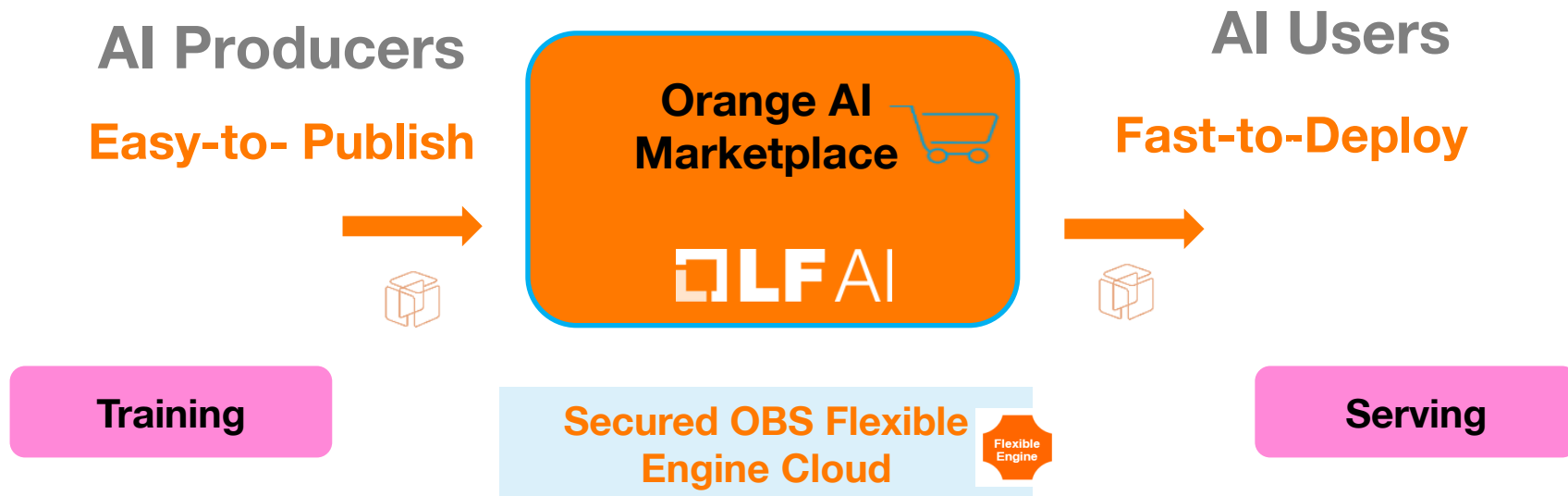




# Orange AI Marketplace

## Artificial Intelligence in 3 steps

- 1 Understand
- 2 Deploy & Use
- 3 Get support



# Explore Orange AI Marketplace

The screenshot displays the Orange AI Marketplace interface. At the top, there is a navigation bar with the 'AI Marketplace' logo, a search icon, a notification bell, a user profile icon labeled 'bertrand', and a share icon. Below the navigation bar is a vertical sidebar with icons for home, calendar, coffee, rocket, and laptop. The main content area features the heading 'Explore the Orange AI Marketplace' and the tagline 'it's easy to discover, download & deploy'. Four AI service cards are displayed in a horizontal row, each with a unique icon and a star rating:

- Detection\_incident**: Features a word cloud icon with terms like 'INCIDENT', 'MANAGEMENT', 'EVENT', and 'BUSINESS'. It has a 5-star rating.
- Sentiment\_Text\_Analysis**: Features an icon with three colored circles (red, blue, yellow) representing 'NEGATIVE', 'NEUTRAL', and 'POSITIVE' sentiment. It has a 5-star rating.
- Anomaly\_Detection\_Orang...**: Features an icon of a bar chart with a magnifying glass. It has a 5-star rating.
- tickets\_classification**: Features an icon of a ticket with gears inside. It has a 5-star rating.

Navigation arrows are visible on the left and right sides of the card carousel.

Discover Orange AI Marketplace

# Merci

