



©FotoKina/Shutterstock



**AI for Natural
Disaster Management**
ITU Focus Group

Monique Kuglitsch
Fraunhofer HHI

The challenge

Natural disasters are damaging physical events caused by natural hazards.

The situation is exacerbated in **certain regions** and for certain **populations**; and is expected to **worsen**.



A view of the vast flooding in Guatemala after Hurricanes Eta and Iota struck one after the other last month.

2 Hurricanes Devastated Central America. Will the Ruin Spur a Migration Wave?

(4 Dec 2020, NYT)

The challenge

Natural disasters feature prominently in the activities of multiple **UN organizations** and **programmes** including

- SDGs
- policy-guiding publications (e.g., Sendai Framework, IPCC SREX)



**TAKE URGENT ACTION TO COMBAT
CLIMATE CHANGE AND ITS IMPACTS**

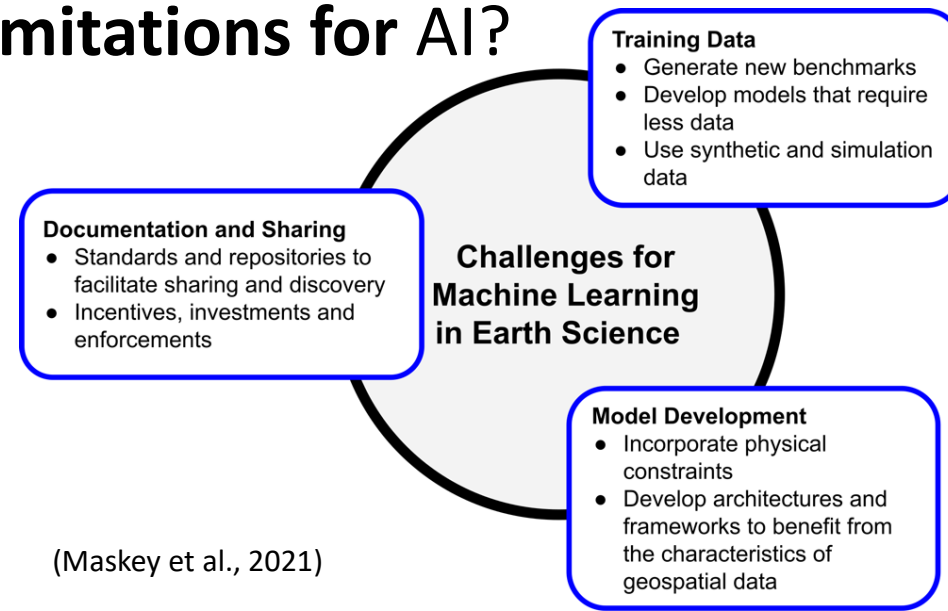
**Sendai Framework
for Disaster Risk Reduction
2015 - 2030**

**MANAGING THE RISKS OF EXTREME
EVENTS AND DISASTERS TO ADVANCE
CLIMATE CHANGE ADAPTATION**

The questions

Through tapping the **potential of AI**, can we improve our **understanding** of natural hazards, our ability to **detect** events in real-time, our ability to **forecast** events, and our ability to effectively **communicate** an impending or ongoing disaster?

What are the **best practices** and **limitations** for AI?



(Maskey et al., 2021)



The goals

Explore best practices in:

- **data** collection, monitoring, and handling for training and testing of AI-based algorithms;
- **AI-based algorithms** for reconstructing, detecting, and forecasting events; and
- effective **communication**.



Data

Some questions to explore are:

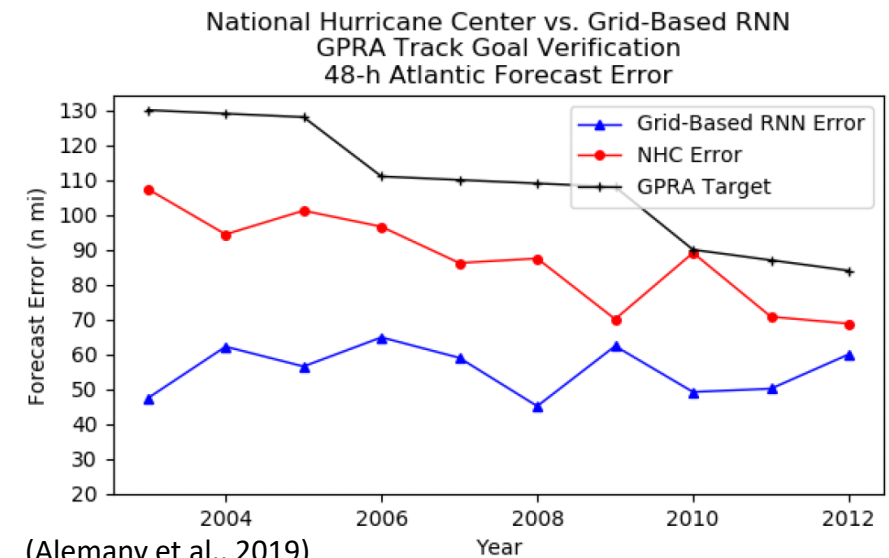
- what **requirements** should data meet when being used to train or test an AI-based algorithm?
- can AI-based algorithms be used to **enhance** data quantity and quality?



AI-based algorithms

Some questions to explore are:

- what is the current **gold standard** method to reconstruct, detect, or forecast events? How can AI-based algorithms bring these methods to the **next level**?
- what should be considered when **training** and **evaluating** an AI-based algorithm?



Communication

Some questions to explore are:

- once an event has been forecast or triggered, how can AI assist with the immediate response?
- how do we ensure that communication methods are reliable and trusted by the population? Are they accompanied by a clear set of protocols to ensure that individuals know how to respond?



EMERGENCY ALERTS

3h ago

Emergency Alert

National Weather Service: TORNADO WARNING in this area until 245 AM EST. Take shelter now in a basement or an interior room on the lowest floor of a sturdy building. If you are outdoors, in a mobile home, or in a vehicle, move to the closest substantial shelter and protect yourself from flying debris. Check media.



Key deliverables

- **Workshops**
- **Roadmap**
- **Glossary**
- Three non-normative **technical reports**
- **Educational materials**

FG-AI4NDM

What is an ITU Focus Group?

- Supports the efforts of an associated **ITU Study Group**. Study Group 2 mandate includes *“telecommunications for disaster relief/early warning, network resilience, and recovery.”*
- Provides a working environment for **pre-standardization or standardization** activities in a chosen area.
- Can be rapidly established and has freedom to choose working methods, leadership, financing, and desired outputs (“deliverables”).



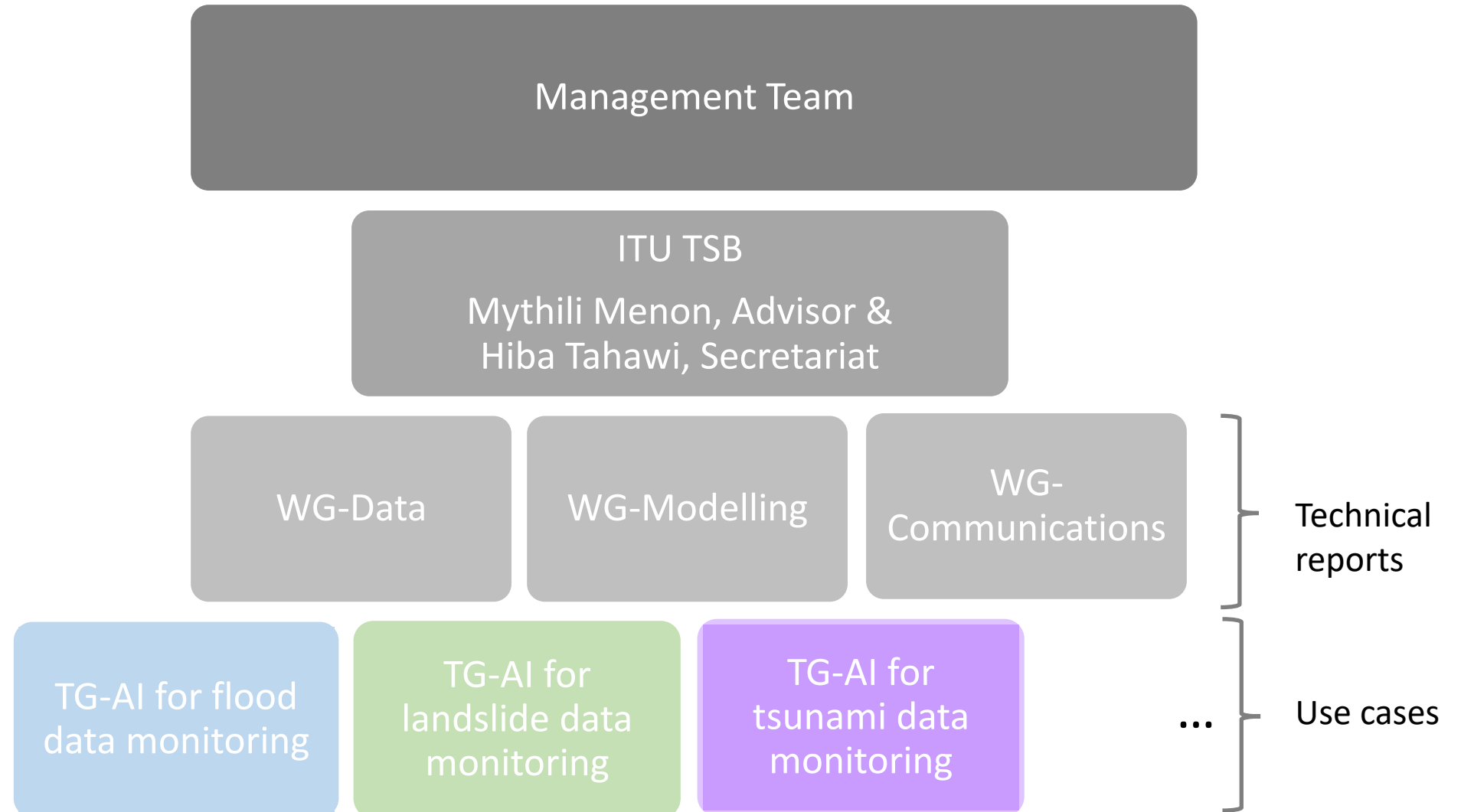
FG-AI4NDM

ITU/WMO/UNEP Focus Group on AI for Natural Disaster Management (FG-AI4NDM) converges the ICT expertise of ITU with natural disaster expertise from the WMO and UNEP.

Creates an atmosphere that is conducive to international, multi-stakeholder, and interdisciplinary collaboration.



FG-AI4NDM



FG-AI4NDM

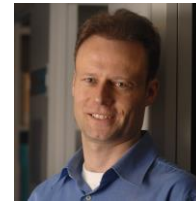
Management Team



Chair
Monique Kuglitsch
Fraunhofer HHI,
Germany



Vice Chair
Elena Xoplaki
University of Giessen,
Germany



Vice Chair
Juerg Luterbacher
WMO



Vice Chair
Muralee Thummarukudy
UNEP



Vice Chair
Preeti Banzal
Government of India,
India



Vice Chair
Yan Chuan Wang
China Telecom,
China



Get involved!

Visit our website (<https://itu.int/go/fgai4ndm>)

Peruse our **onboarding document** for guidance on how to:

- Create a free **ITU user account**
- Join our low-volume **mailing list**
- **Register** for our workshops/meetings
- Use our remote participation platform (**MyMeetings**)
- Access our **collaboration site**
- Submit written **contributions**





©FotoKina/Shutterstock

Get involved!

Join our meeting on **24-25 June!**
Share your expertise!