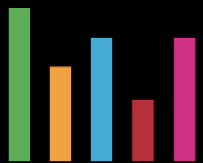


HOVINBYEN

Digital Twin in Urban Planning



AUGMENT CITY



Who



Kristin Dvergsdal Haugen

Senior Project Manager, Augment City

-Sept 2022-current date

Previous experience:

Consultant at PwC for 14 years

Expertise:

Simulation, data mining, analysis

M.Phil System Dynamics – University of Bergen



Challenge

Oslo Municipality lacks the possibility to see coordinated efforts and direction of development

The amount of data that emerges in line with urban planning is scattered and difficult to put into context





On average a regulation process takes 5,5 years. Ideally a regulation planning case should take 1,5 years

-Developer





To initiate an urban planning process, its required to read ~2500 pages of text to get a proper understanding of the area

-employee Oslo Kommune



Project objectives

- 1 Overall objective**
 - Explore correlation and context across Regulation and Development Proceedings
 - Reduced time spent on analyses in Regulation Planning
- 2 Socitey**
 - Better collaboration across public stakeholders and across public and private stakeholders in urban planning
 - Increased trust across stakeholders
- 3 Businesses, Climate and Environment**
 - Urban planning circularity
 - Understand consequences of various plans
 - Visibility, transparency and documentation of consequences



Project content



Ruter#

STEEN
STRØM

&
225 ÅR

STOR OSLO
EIENDOM

1

Product concept
and project plan



2

Digital Twin AS IS



3

Functionality



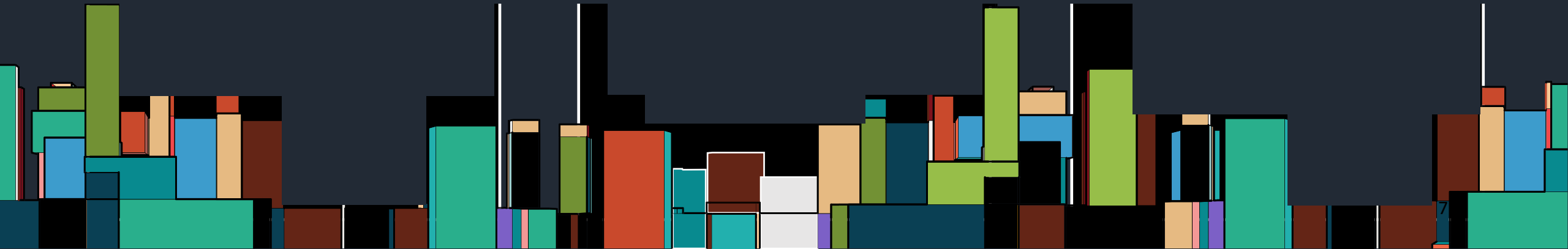
4

Cloud Access
and Training



5

Pilot Project



Current state Regulation Process

Planning and Initiation

1 year

Expositions, Research, Discussions, Solutions

2-3 years

Final Proposal, Political treatment, Decision

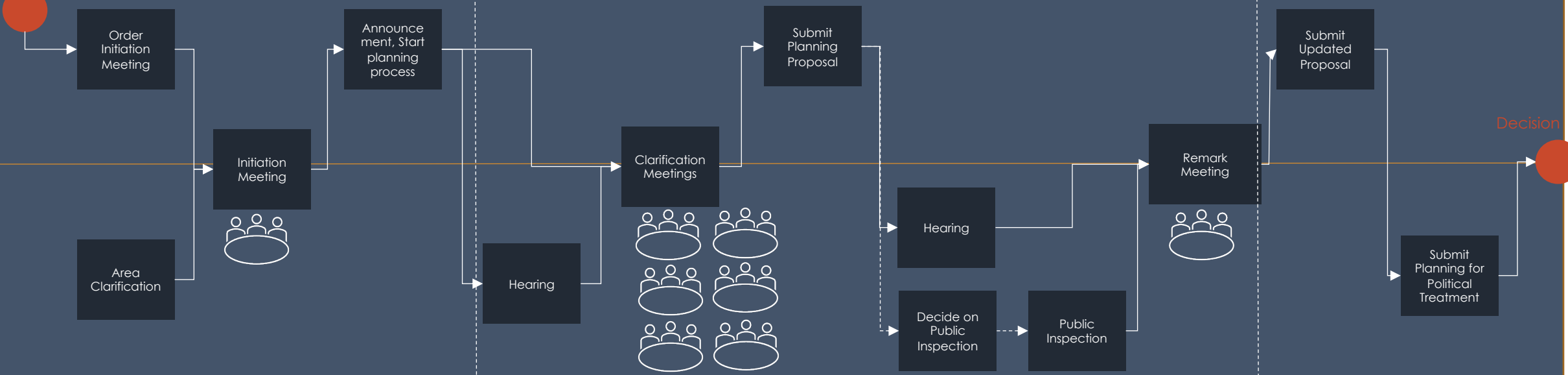
1 year

Pre work

Developer

Municipality

Decision



Pilot 1: Plan Initiatives

Explore various projects and have the possibility to switch between various initiatives from various proposals

Pilot 2: Site Analysis

Visualizing functions for the new urban space, in addition to various alternatives for the innovation district

Pilot 3: Social Infrastructure

Understand the effect of social infrastructure related to population increase (need for kindergartens)

Pilot 4: Mobility

Understand the mobility consequences of population increase and new businesses

Value of using a digital twin

Planning and Initiation

Expositions, Research, Discussions, Solutions

Final Proposal, Political treatment, Decision

Area Clarification

Initiation Meeting
Discussion Meetings
Planning Proposal

Discussion Meetings
Planning Proposal

In a regulation planning process, it is valuable to use a digital twin for:

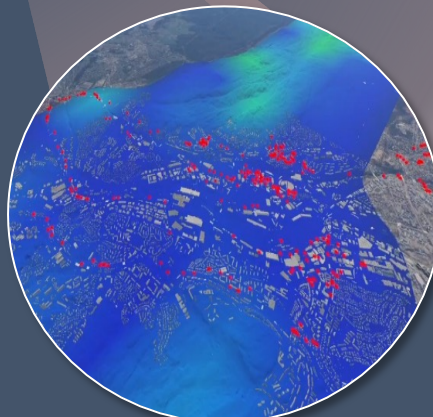
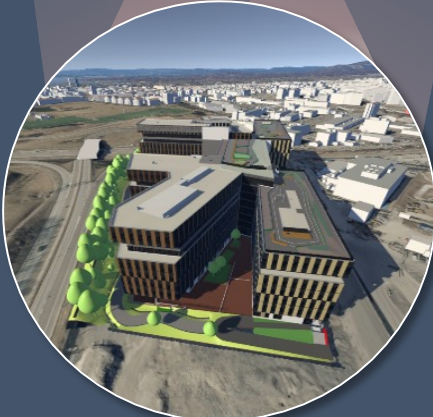
- Projects context (pilot 1)
- Reduce time spent on analyses and research (pilot 1, 2, 3, 4)
- Better coordination between stakeholders (pilot 1, 2, 3, 4)

Pilot 2
Site Analysis

Pilot 1
Plan Initiatives

Pilot 3
Social Infrastructure

Pilot 3
Mobility



Value of using a digital twin

One visual digital platform

One common collaboration tool across all stakeholders

Reduced Time

Quickly test various planning initiatives and agree upon solutions

Real time / Updated data

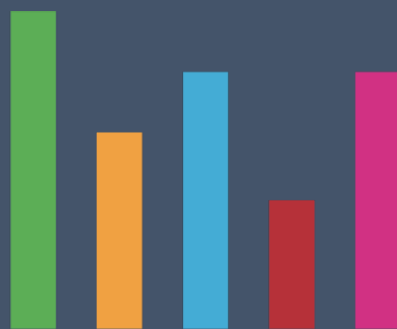
Real time information – the digital twin can be used during the whole regulation planning process (several years)



Demo

Video





AUGMENT CITY