

AUGMENT CITY

Human interaction with big data

Driving to work in the morning....

Processing and understanding risks
without a second thought

**Humans are designed to understand
and evaluate data in a visual form**



From almost real to beyond real

Simulation Visuals

Simulation Core & Physics

Next to
real
simulation

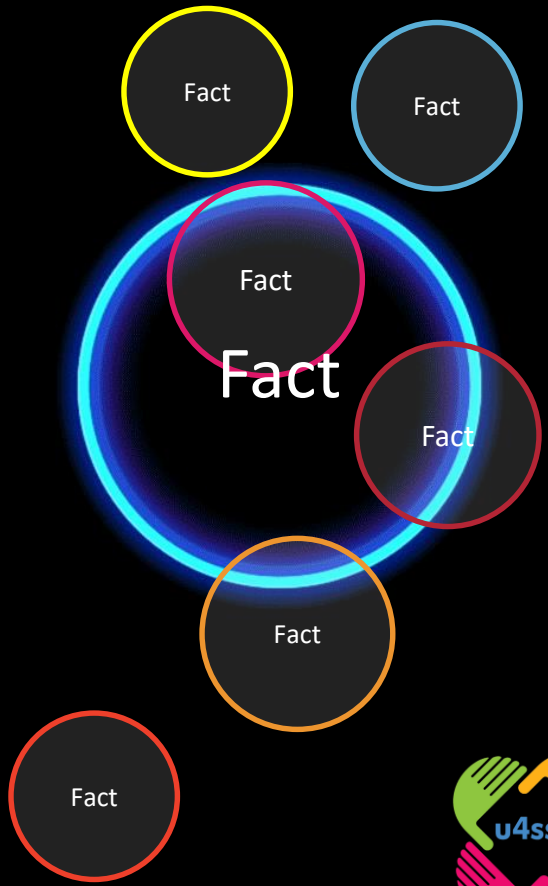
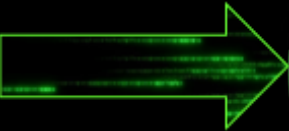


Using simulation tools:

To go beyond what is possible in real life

Augmented simulation





Offshore



City



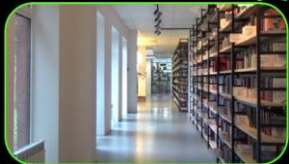
Health

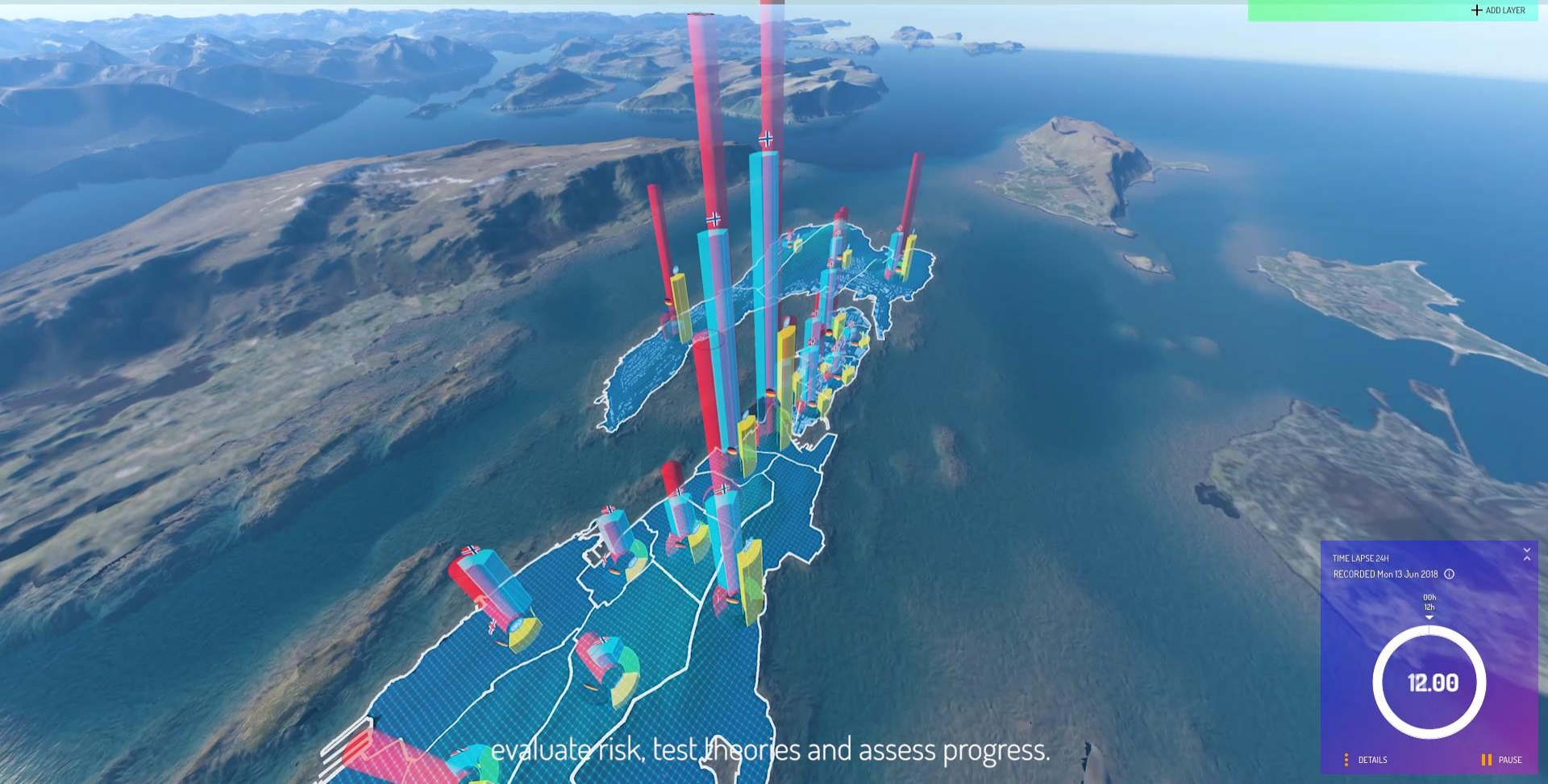


Finance



Education





evaluate risk, test theories and assess progress.

TIME LAPSE 24H
RECORDED Mon 13 Jun 2018 

09h
12h
▼

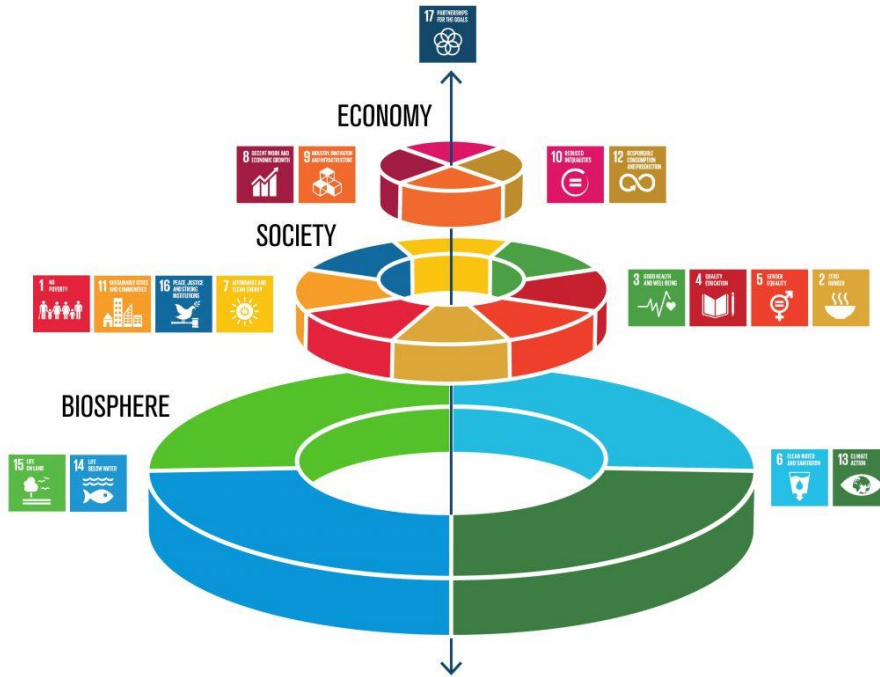
12.00

 DETAILS  PAUSE

SUSTAINABLE DEVELOPMENT GOALS

1 NO POVERTY 	2 NO HUNGER 	3 GOOD HEALTH 	4 QUALITY EDUCATION 	5 GENDER EQUALITY 	6 CLEAN WATER AND SANITATION
7 RENEWABLE ENERGY 	8 GOOD JOBS AND ECONOMIC GROWTH 	9 INNOVATION AND INFRASTRUCTURE 	10 REDUCED INEQUALITIES 	11 SUSTAINABLE CITIES AND COMMUNITIES 	12 RESPONSIBLE CONSUMPTION
13 CLIMATE ACTION 	14 LIFE BELOW WATER 	15 LIFE ON LAND 	16 PEACE AND JUSTICE 	17 PARTNERSHIPS FOR THE GOALS 	 THE GLOBAL GOALS For Sustainable Development

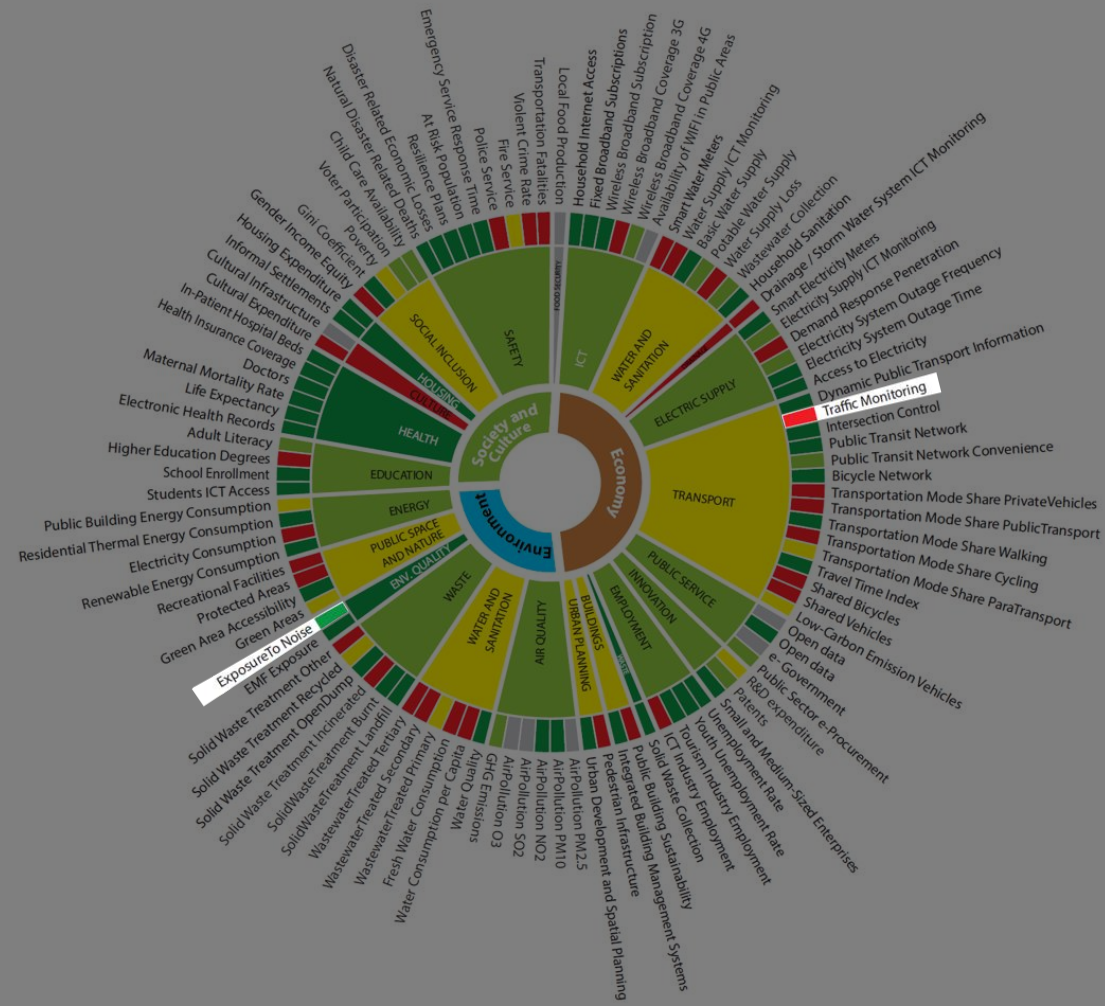
The Three Dimensions



- Economic
- Society
- Environment

Graphics by Berlin Lokamofa.com





Ålesund Airport

102
dB

Ålesund

NOISE EXPOSURE

TRAFFIC

+ ADD LAYER

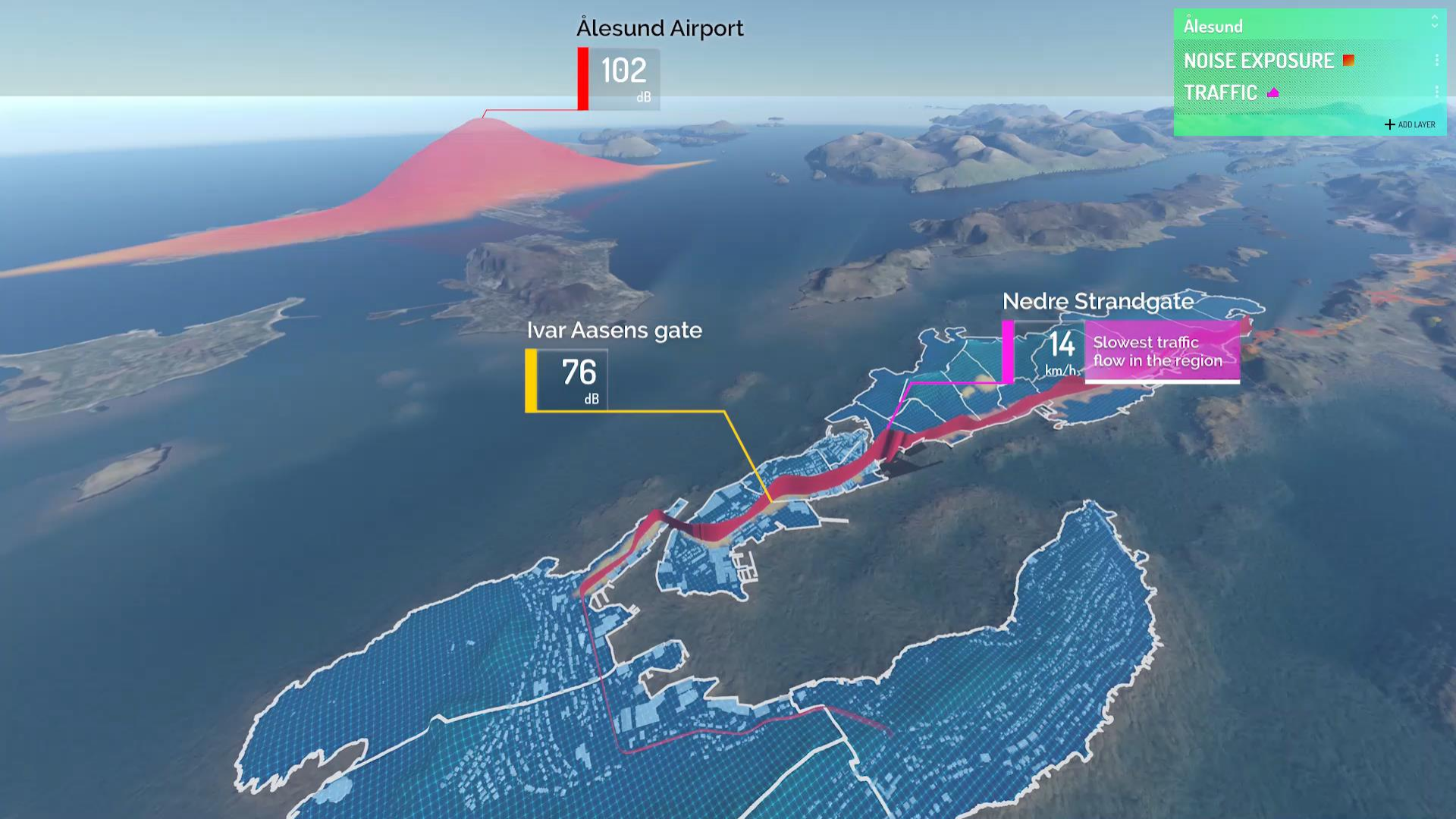
Ivar Aasens gate

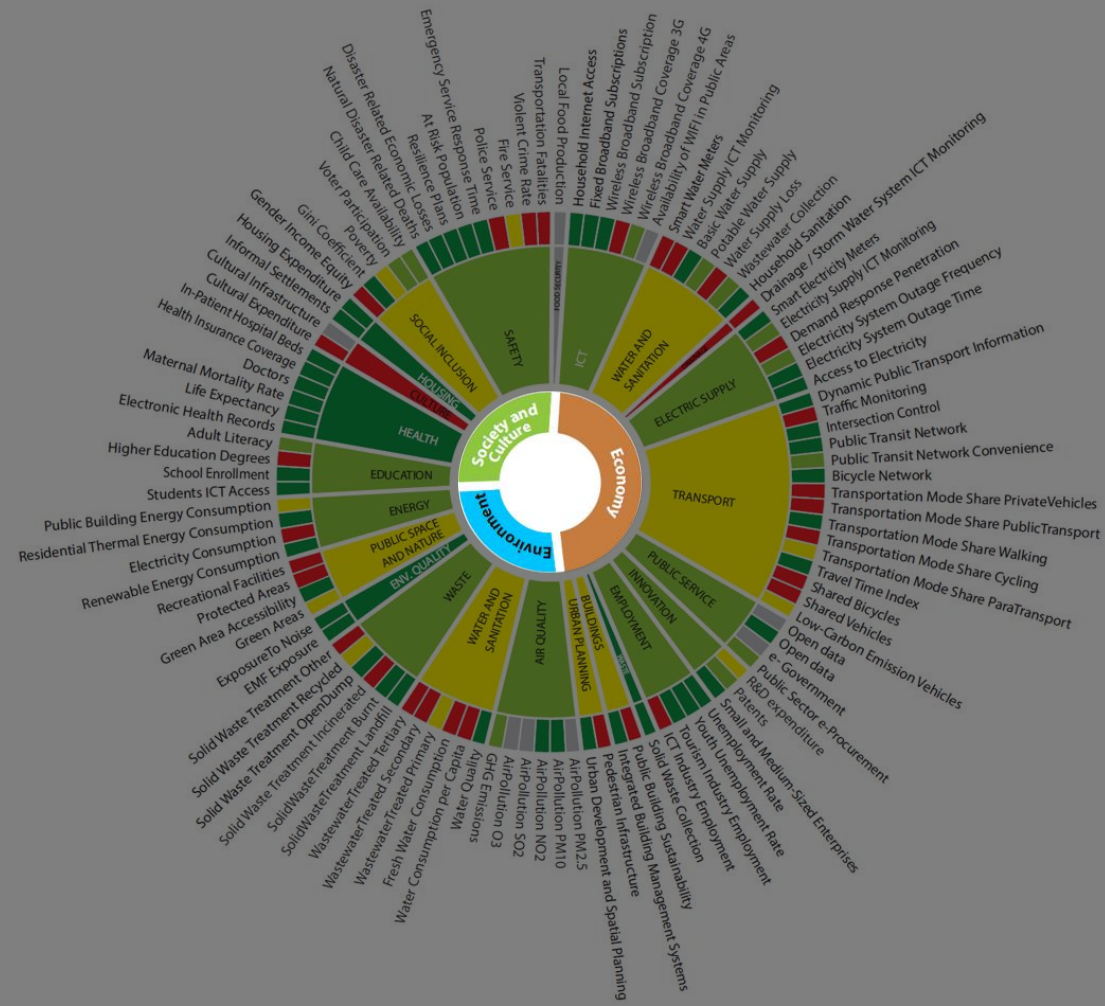
76
dB

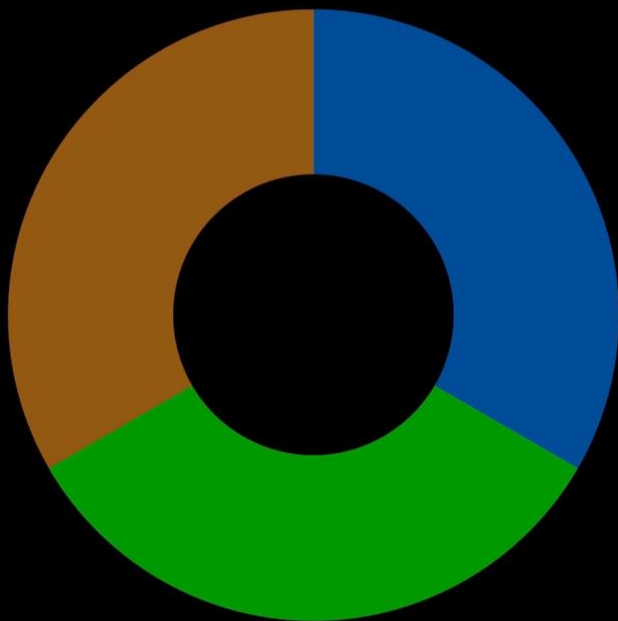
Nedre Strandgate

14
km/h

Slowest traffic flow in the region







Case study




AUGMENT CITY

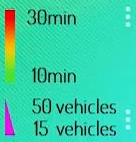


The UN's digital twin city simulation prototype

Ålesund, west coast of Norway. A city with a population of 40 000.

An aerial view of a digital twin simulation of Ålesund, Norway. The scene shows a large body of dark blue water in the foreground, with several islands and peninsulas extending into the sea. The terrain is rendered with green grass and brown earth, showing a mix of natural and built-up areas. The sky is a clear, bright blue with some light, wispy clouds. The overall appearance is that of a high-quality, realistic digital environment.

EMERGENCY
RESPONSE TIME



TRAFFIC

+ ADD LAYER

Fire station

110

During rush hour, response times to parts of the city increase to over 30 minutes. If your house caught on fire in Hessa, it could burn down before the fire department arrived.

TIME LAPSE 24H
RECORDED Mon 13 Jun 2018



DETAILS

PAUSE

ADD LAYER

Search

Filter

Recent 9 +

Demographics 8 +

Services and locations 13 +

Economy 42 +

Environment 35 +

Society 21 +

Traffic & movement 21 +

+ Import data ⓘ

The digital twin offers insights that reveal novel solutions. We were able to identify, for example, that childcare opening times has a large effect on rush hour traffic.

ADD LAYER

Search

Filter

Recent 9 +

Demographics 8 +

Services and locations 13 +

Economy 42 +

Environment 35 +

Society 21 +

Traffic & movement 21 +

+ Import data

We then looked at the impact of increasing the cost of parking for set times.

Traffic simulation ✕

SCHOOL HOURS ⋮

PARKING ALLOCATIONS ⋮

➤ RUN SIMULATION

+ ADD FACTOR

Ålesund ⌵

ADD LAYER ✕

🔍 Search Filter ⌵

Recent 9 +

Demographics 8 +

Services and locations 13 +

Economy 42 +

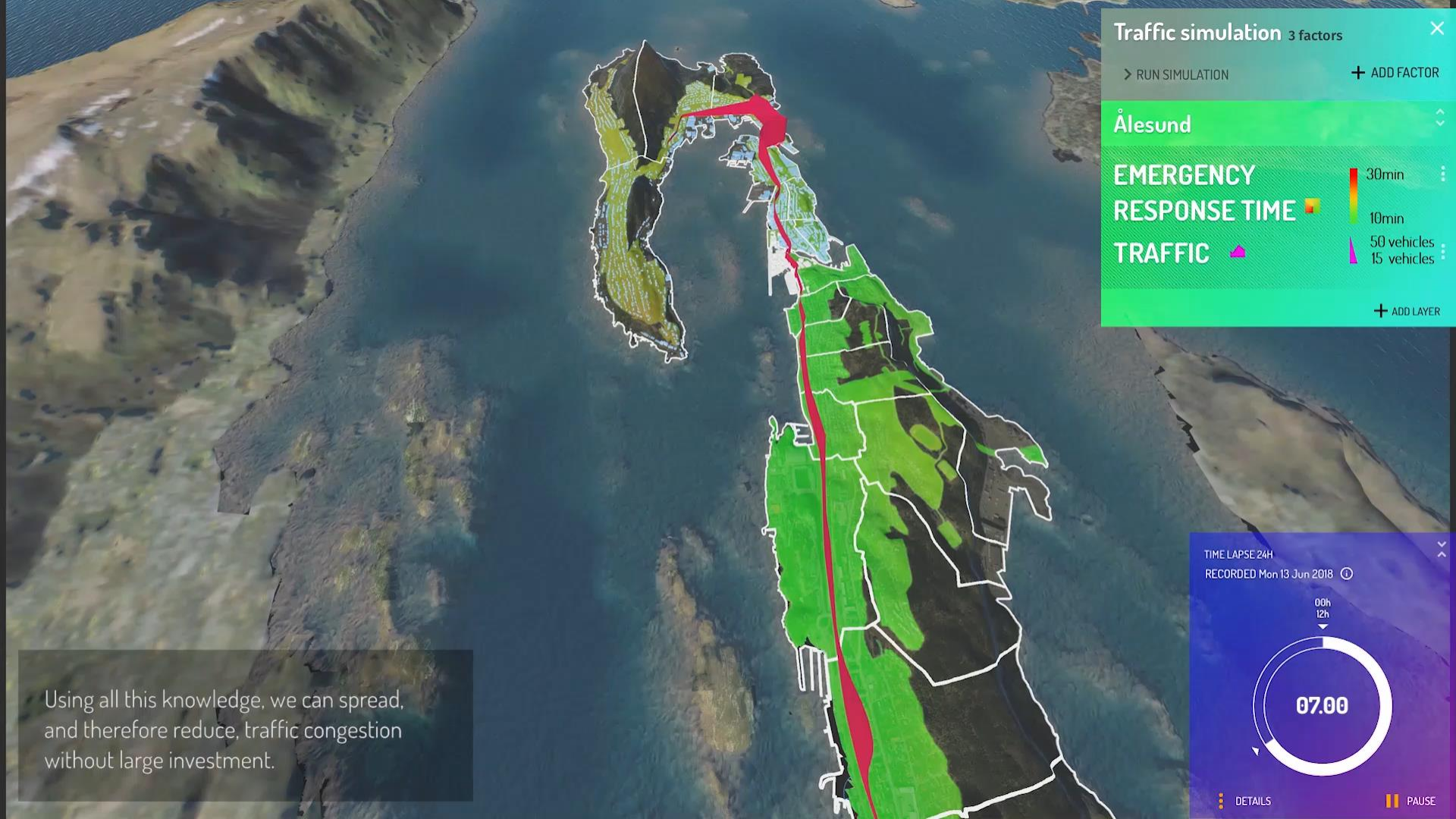
Environment 35 +

Society 21 +

Traffic & movement 21 +

+ Import data ⓘ

Data also reveals waste disposal trucks follow routes that take them through rush hour traffic.



Traffic simulation 3 factors ✕

> RUN SIMULATION + ADD FACTOR

Ålesund ⌵

EMERGENCY RESPONSE TIME 📊

TRAFFIC 📊

30min

10min

50 vehicles

15 vehicles

+ ADD LAYER

TIME LAPSE 24H

RECORDED Mon 13 Jun 2018 🕒

00h

12h

07.00

⋮ DETAILS ⏸ PAUSE

Using all this knowledge, we can spread, and therefore reduce, traffic congestion without large investment.



Fire station

110

In addition, building data already held by the council could save the fire brigade precious minutes if delivered en route to an emergency.

TIME LAPSE 24H
RECORDED Mon 13 Jun 2018

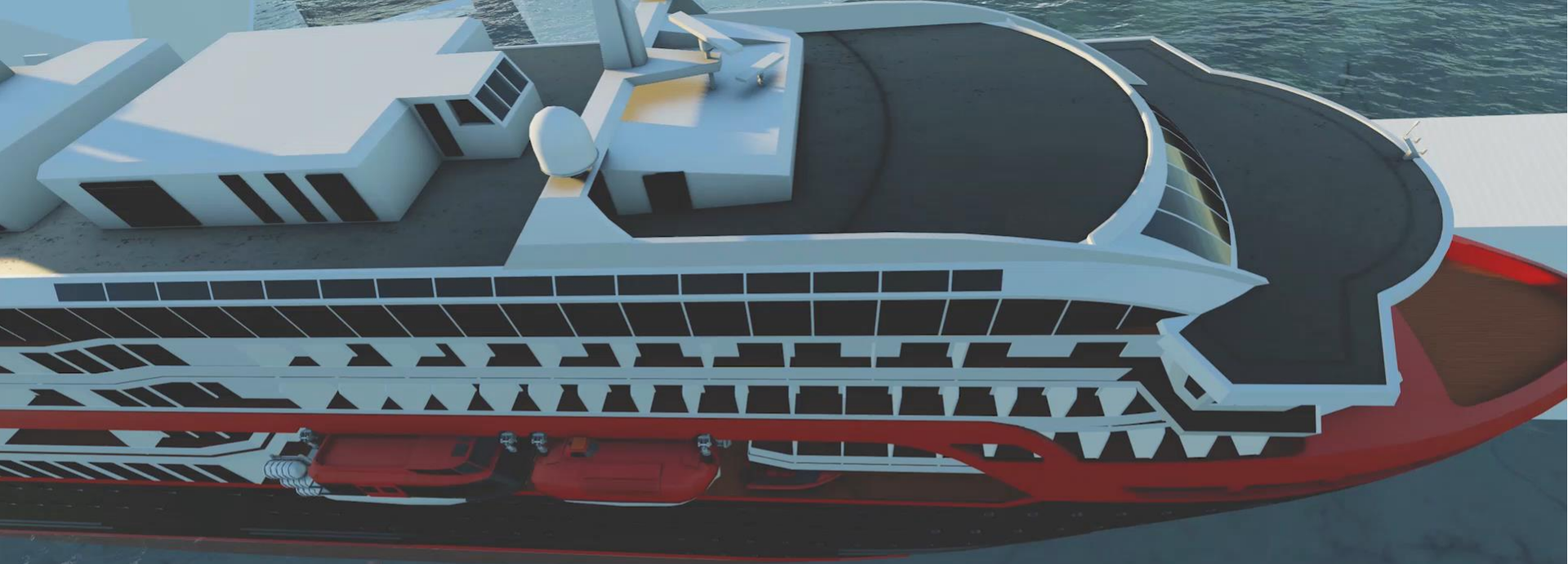
00h
12h

09.00

DETAILS PAUSE

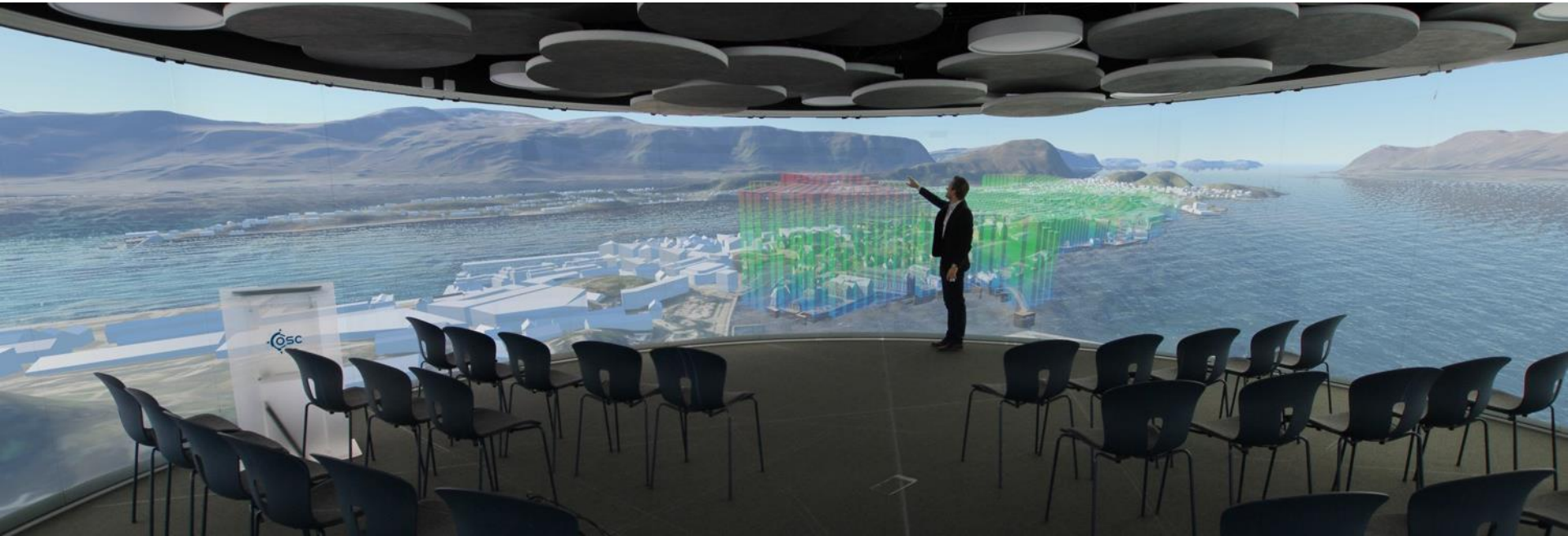


While tourism is a welcome industry, a population increase of over 100% in the city centre over the summer months slows down traffic.



It's now possible to understand every aspect of your city better, so you can choose smart and sustainable solutions. Augment City will help you build a more efficient, effective city, and improve your inhabitants' quality of life.

The future tool for smart visualisation and simulation



AUGMENT CITY

Joel A Mills

CEO

jam@augmentcity.no

+47 90906664

