

valencia  
**ciudad**  
inteligente

VLCi project





# Contents

1. VLCi project intro
2. Project progress
3. Platform architecture
4. Methodology
5. VLCi services & tools
6. “Impulso VLCi” [Red.ES]

# 1.- VLCi Project - Intro



*“The VLCi Project was set up ....*

## CONTRACT

4 YEARS + (1 + 1)  
KickOff: 08/07/2014

## BUDGET

4M€ aprox.  
Dimension 1: Platform Service (30%)  
Dimension 2: Prof. Services (70%)

## ORGANISATION

Project Management  
Integration/Dev Team  
Strategy Team  
Platform Team

## MULTIDISCIPLINAR TEAM

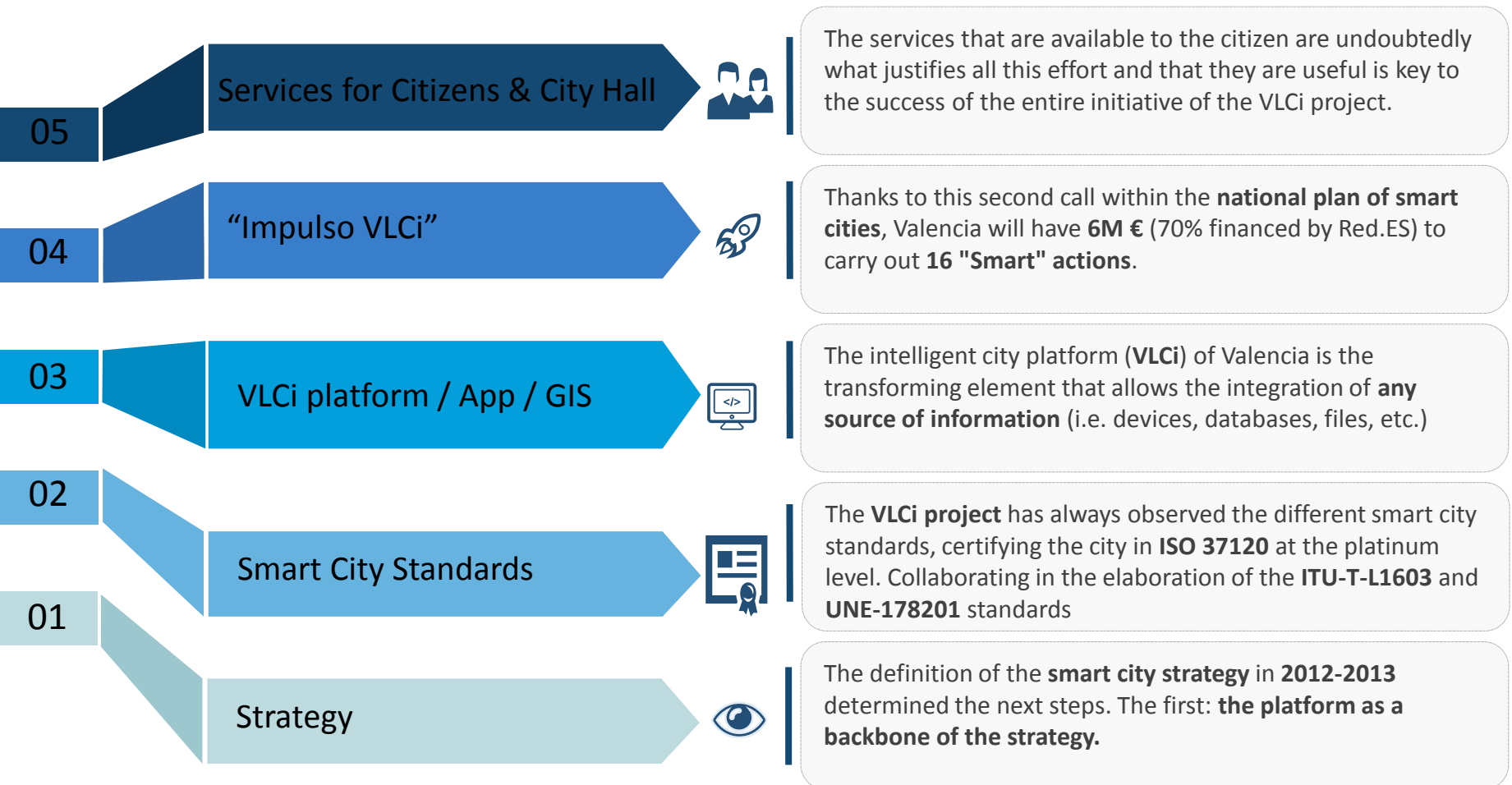
+ Project Manager  
+ Developers  
+ Designer  
+ Lawyer



## 2.-Project progress (ii)



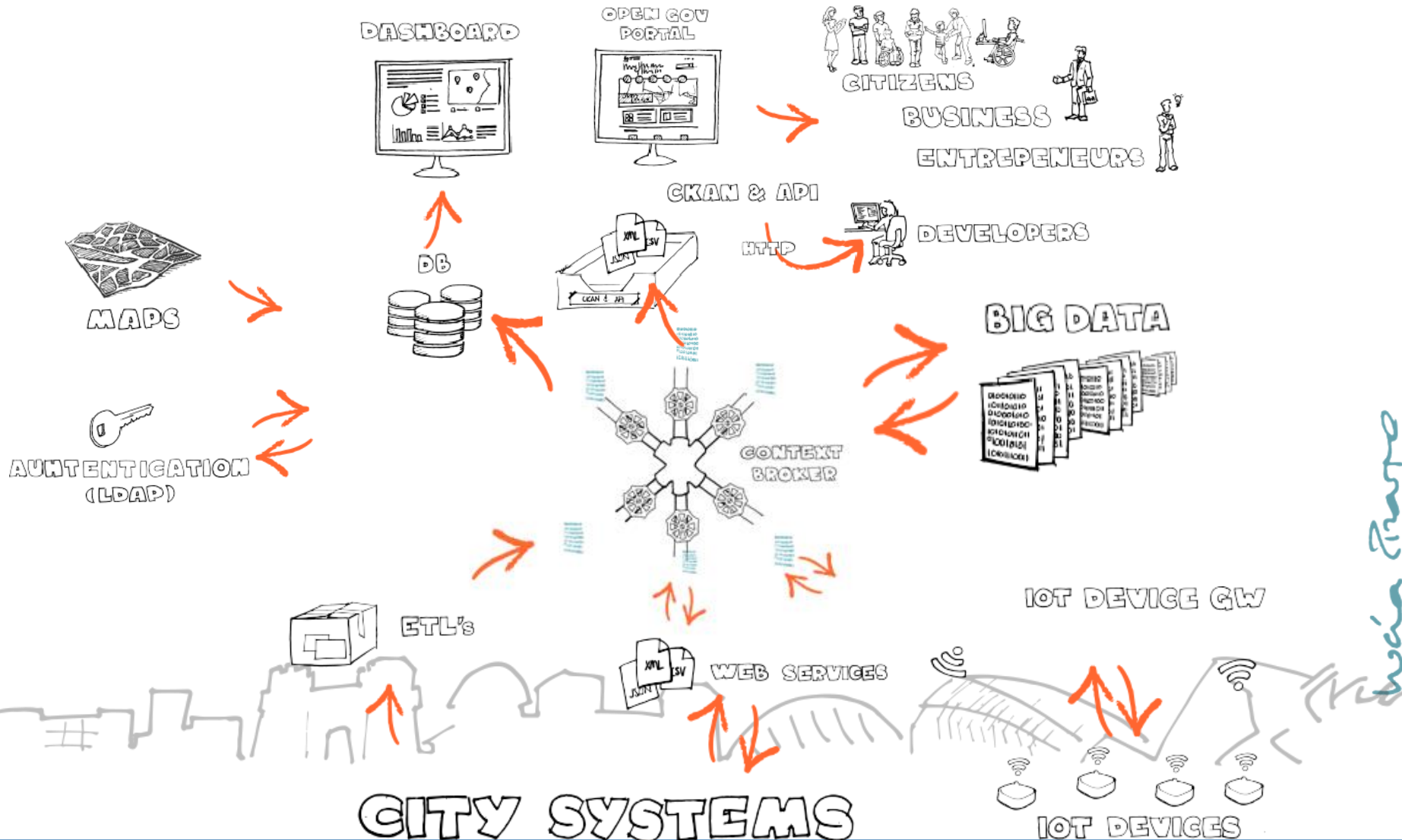
...thanks to the city platform, the GIS, the App...



# 2.-VLCi platform arch.



...the platform is the backbone element, integrates all the existing information...

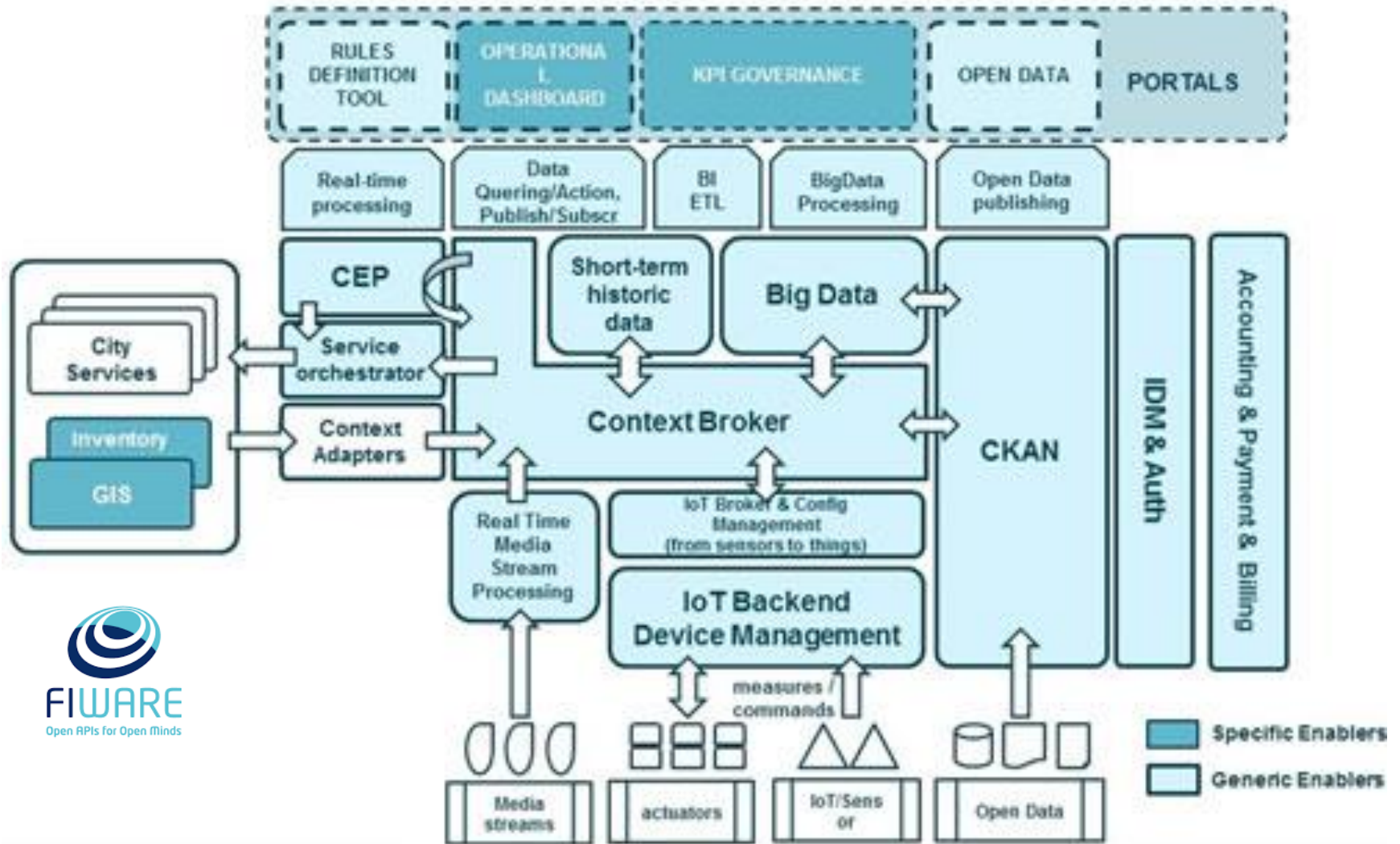




# 2.-VLCi platform arch.



...a view with deeper technical insight...

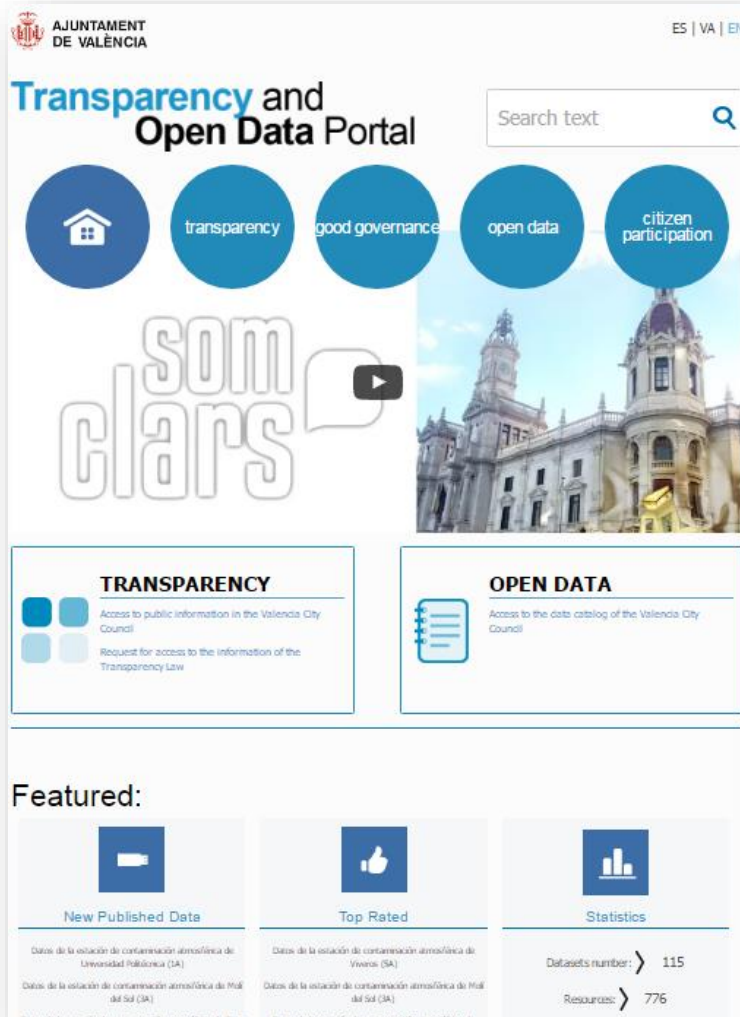


# 3.- Results: Open Data portal



...all city info available for the citizen...

<http://gobiernoabierto.valencia.es>

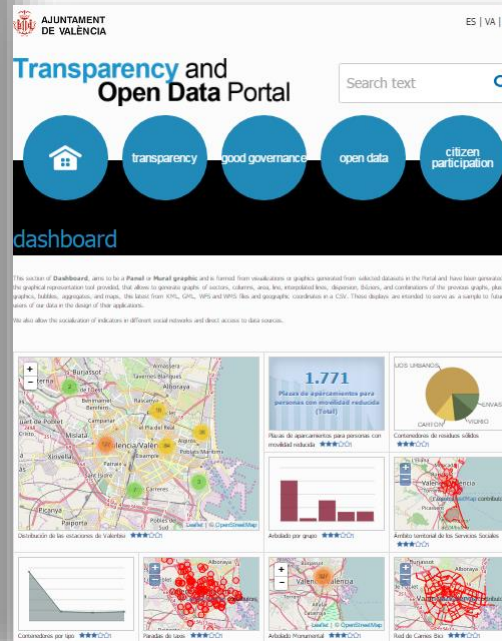


## Open Data

All city datasets (>100 in >800 distribs) available for the citizen.

## Transparency Portal

Provides the citizenship with all the city hall operation data. Salaries, budget execution degree, public contracts, etc.



## APIs available (CKAN & more)

Any programmer can reuse any dataset available in the catalogue (under Creative Commons License 4.0: any use).



## Geopositioned info

Any citizen can always see on the portal any information with geographical information can be seen on maps.

# 3.- Results: Unified City Hall Dashboard

...enables taking better decisions for the city...

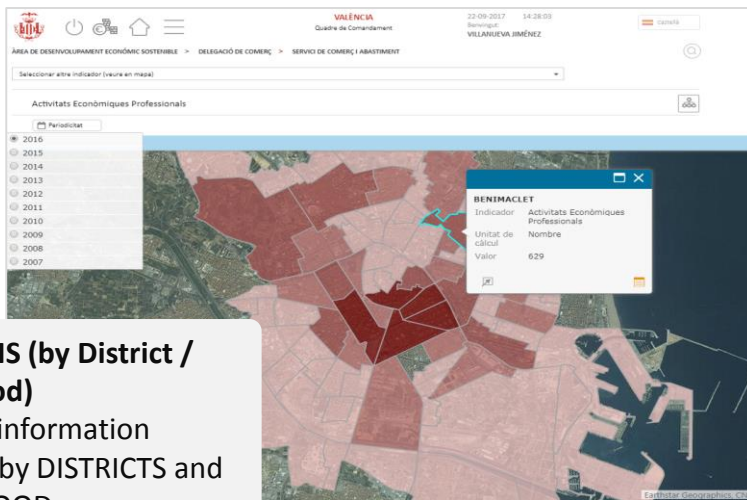
## MAIN PAGE

It shows the entire municipal organization and its state at that time



## GEO ANALYSIS (by District / Neighborhood)

It shows the information geolocalized by DISTRICTS and NEIGHBORHOOD.



ISO 37120

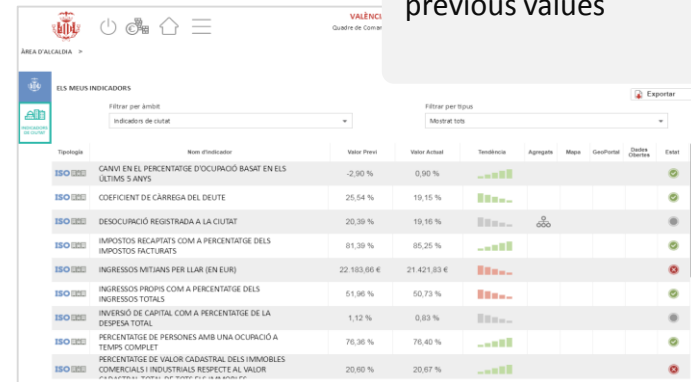


WORLD COUNCIL ON CITY DATA



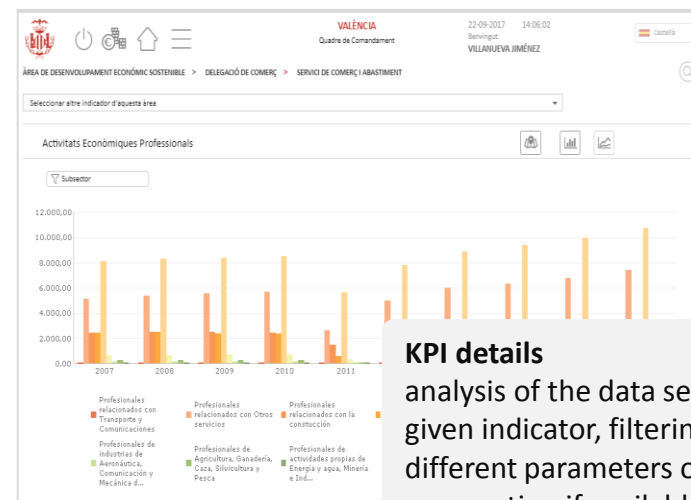
## KPI LIST

List of indicators with their status, trend, current and previous values



## KPI details

analysis of the data series for a given indicator, filtering by the different parameters of aggregation if available





# 5.- Results: QuickDashboard

...providing the city status in "one shot" ...



<http://www.valencia.es/valenciaalminut>

## VLCi RESOURCES KEYPAD

Allows access to every resource of the project: unified CdM, WCCD portal, open data portal, geoportal, etc

## MAP ROLLOVER

In which different maps are shown with different data sets of the city: "air quality", "municipal bike service use", "temperature", "traffic conditions", "BUS stops and real time bus locations"

## CALENDAR & METEO INFO

Basic weather forecast information is displayed in the city for the next 24 hours, as well as the calendar: day and time you are in

## MULTI LANGUAGE

Valencian / Spanish

## AIR QUALITY

allows checking at a glance the state of air quality in the city of Valencia.

## UNEMPLOYMENT RATE

The evolution of the unemployment rate is shown, by sex, age and in total. For quarters and year

## PARKING AVAILABLE

Vacancies in all public car parks in the city

## TWITTER: mobility communications

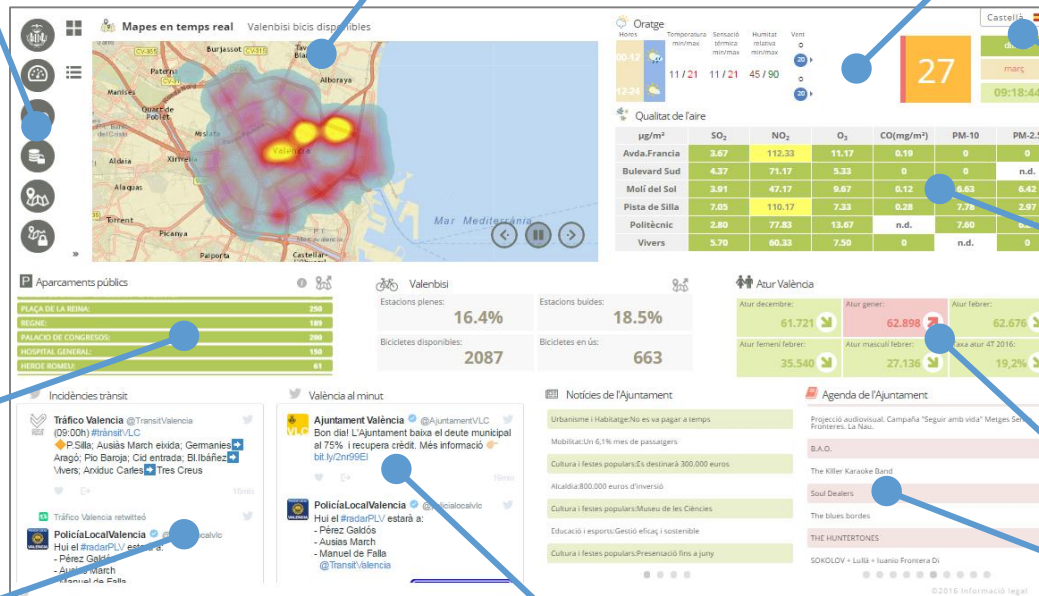
All the incidences of mobility of the city are included.

## TWITTER: Valencia City Related topics

lists all the tweets related to the city of Valencia issued by related entities.

## CITY HALL NEWS & AGENDA

The AGENDA and the NEWS of the COUNCIL are offered, updated in real time..



# 5.- Results: Geoportal

...showing all available info on maps ...



 <http://geoportal.valencia.es>

**Mobilitat / Movilidad**

Buscar adreça / Buscar dirección

**Legenda / Leyenda**

**Transport / Transporte**

Estat transit temps real / Estado trafico tiempo real

- Fluido / Fluid
- Denso / Dens
- Congestionado / Congestionat
- Cortado / Tallat
- Sin datos / Sense dades
- Subterráneo Fluido / Subterrànies fluid
- Subterráneo Denso / Subterrànies dens
- Subterráneo Congestionado / Subterrànies congestionat
- Subterráneo Cortado / Subterrànies Tallat
- Subterráneo Sin datos / Subterrànies sense dades

**Fallas / Fallas**

Buscar adreça / Buscar dirección

**Lista de capas / Lista de capas**

Capas operativas

- Falles / Fallas
- ESPECIAL
- 1A
- Falla
- Falles Experimentals / Fallas Experimentales
- Carpes / Carpas
- Talls de Carrers / Cortes de Calles
- Zonas d'activitats / Zonas de actividades
- Rutes Especials / Rutas Expeciales
- Rutes Primera/ Rutas Primera
- Rutes Experimentals / Rutas

**Urbanisme / Urbanismo**

Buscar adreça / Buscar dirección

**Lista de capas / Lista de capas**

Capas operativas

- Urbanisme / Urbanismo
- Districtes / Distritos
- Barris / Barrios
- Portals dels carrers / Portales de las calles
- Parcel·les cadastrals urbana / Parcelas catastrales urbana
- Illes amb dades de població / Manzanas con datos de población
- Parcel·les cadastrals rustica / Parcelas catastrales rustica
- Full 2000 / Hoja 2000
- Full 1000 / Hoja 1000

**Histórico Valencia**

Buscar dirección / Buscar adreça

**Selección**

1929



# 5.- Results: App Valencia

*...Valencia at your fingertips reach...*



## Real Time Notifications

- Traffic Warnings
- Emergencies
- Possible Water leakage (suscription)

## Geolocalized info (Mapa)

- Traffic Status
- BUS stops
- Public Bike Service
- Tube stations
- Taxi stations
- Monuments
- Nearby resources: Cheaper Gas stations, Hospitals, Chemists, etc

## Tourism & Culture

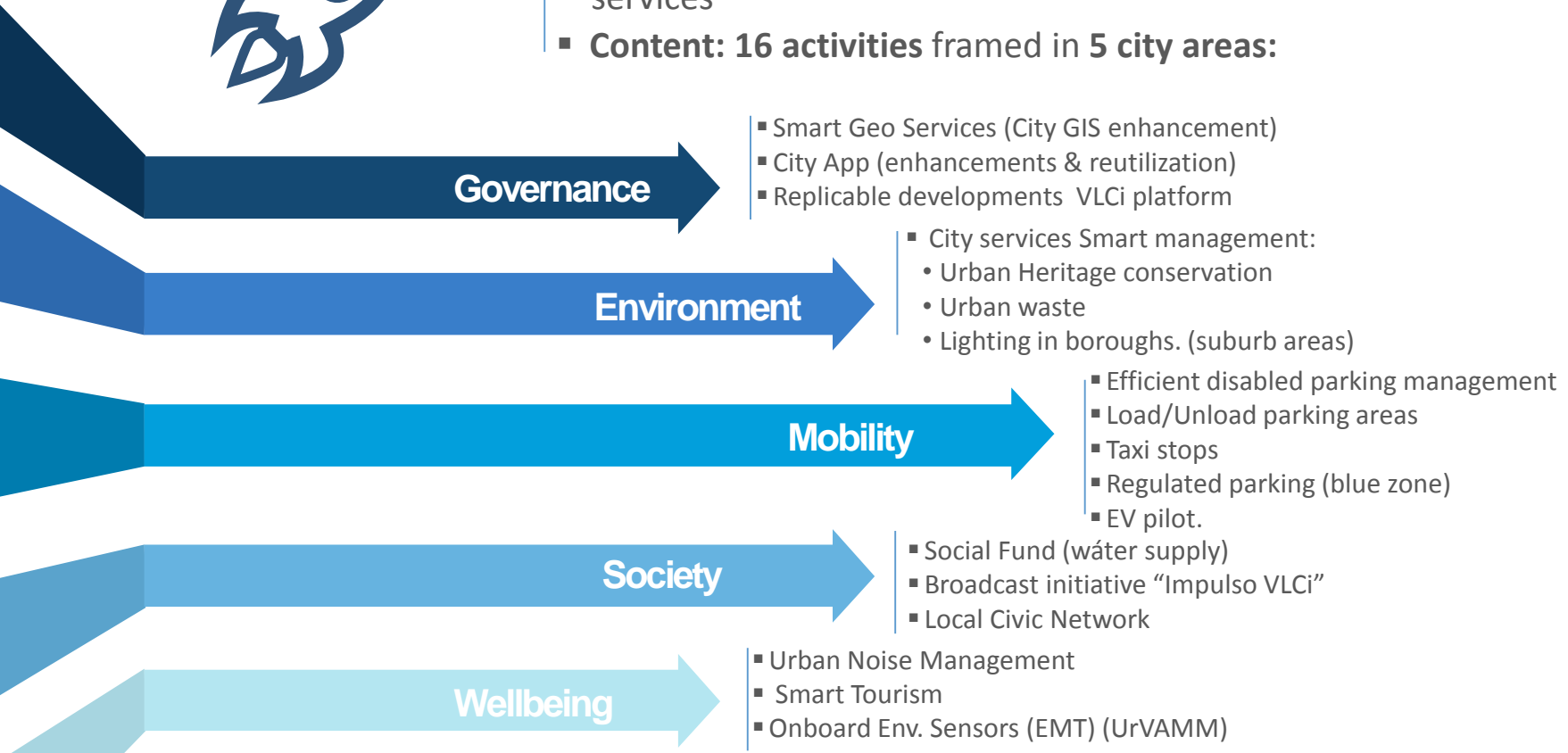
- Cultural routes
- Historical Monuments (AR)
- Audio guide (emblematic monuments)
- VR Tours

# 6.- “Impulso VLCi” (Red.ES)

...and there's more to come!...



- **Budget:** 5.998.733,46 € (70% Red.ES + 30% Valencia City)
- **Exec. Period:** from mid **2017 to 2019**
- **Goal:** Contribute to the VLCi project meeting the challenges established for improving the efficiency and management of the various municipal services
- **Content:** **16 activities** framed in **5 city areas:**



An aerial photograph of a city, likely Taipei, showing a large green park area with many palm trees in the foreground. A multi-arched bridge spans across a river or canal. In the background, there is a dense urban skyline with various buildings, including a prominent tall skyscraper and a large, modern, curved structure. The sky is clear and blue.

Thanks

Any questions?